

STATE OF ILLINOIS
DEPARTMENT OF TRANSPORTATION
DIVISION OF HIGHWAYS

**PROPOSED
HIGHWAY PLANS**

F.A.P. ROUTE 762 (IL. RTE. 32)
SECTION D7 BRIDGE PAINTING 2017-1

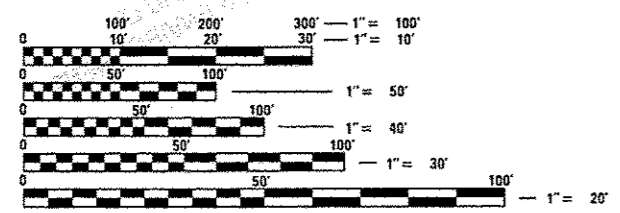
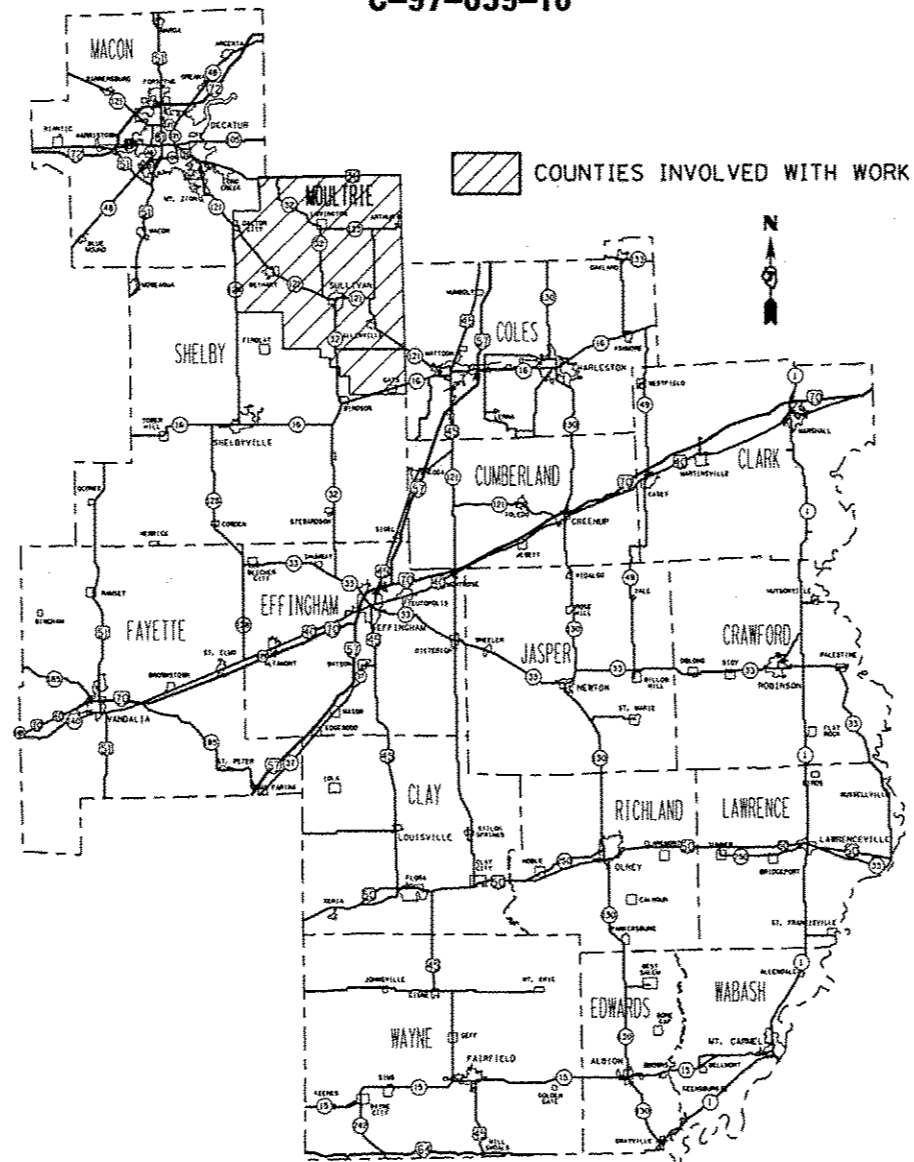
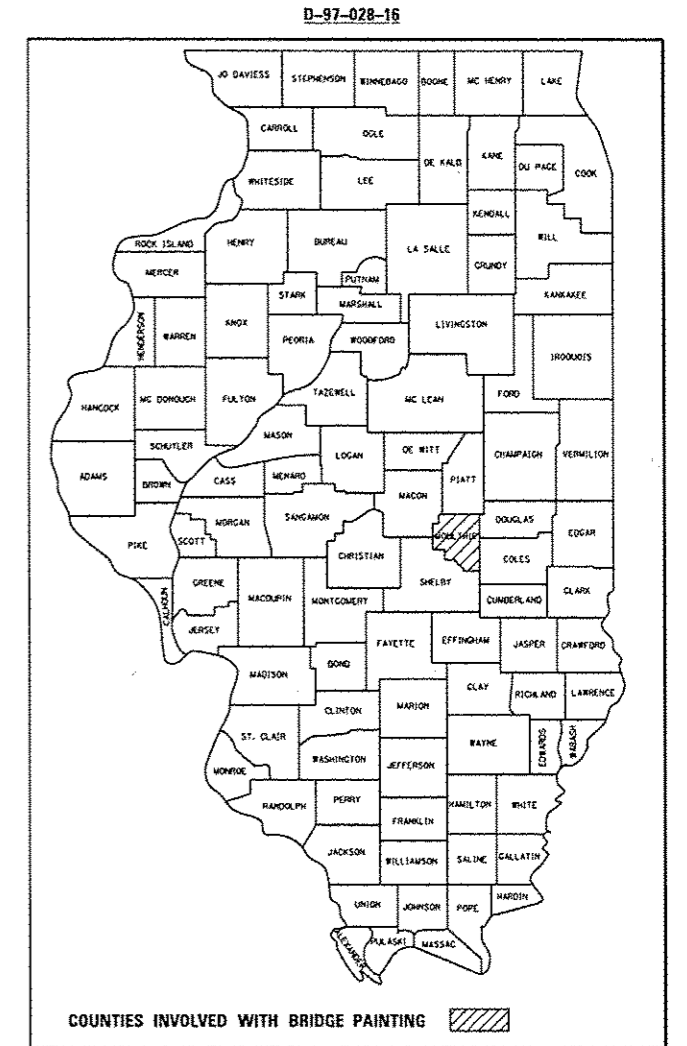
**BRIDGE PAINTING
MOULTRIE COUNTY**

C-97-059-16

FOR INDEX OF SHEETS, SEE SHEET NO. 2

F.A.P. RTE.	SECTION	COUNTY	TOTAL SHEETS	SHEET NO.
D7	BRIDGE PAINTING 2017-	MOULTRIE	6	1
		ILLINOIS	CONTRACT NO. 74764	

• F.A.P. RTE. 32



FULL SIZE PLANS HAVE BEEN PREPARED USING STANDARD ENGINEERING SCALES. REDUCED SIZED PLANS WILL NOT CONFORM TO STANDARD SCALES. IN MAKING MEASUREMENTS ON REDUCED PLANS, THE ABOVE SCALES MAY BE USED.

J.U.L.I.E.
JOINT UTILITY LOCATION INFORMATION FOR EXCAVATION
1-800-892-0123
OR 811

PROJECT ENGINEER: TOM RONAN
PROJECT MANAGER: TOM RONAN
PHONE: (217)-342-8320
CONTRACT NO. 74764

STATE OF ILLINOIS
DEPARTMENT OF TRANSPORTATION
DIVISION OF HIGHWAYS

SUBMITTED August 2 2016
[Signature]
DEPUTY DIRECTOR OF HIGHWAYS, REGION ENGINEER

Sept 30 2016
[Signature]
ENGINEER OF DESIGN AND ENVIRONMENT

Sept 30 2016
[Signature]
DIRECTOR OF HIGHWAYS, CHIEF ENGINEER

PRINTED BY THE AUTHORITY
OF THE STATE OF ILLINOIS

INDEX OF SHEETS

SHEET NO.	ITEM
1	COVER SHEET
2	INDEX OF SHEETS, GENERAL NOTES &, LOCATION DESCRIPTIONS
3	SUMMARY OF QUANTITIES
4-6	EXISTING STRUCTURE PLANS

THE FOLLOWING STANDARDS ARE A PART OF THESE PLANS AND ARE INCLUDED AFTER SHEET NO. 15:

STD. NO.	DESCRIPTION
000001-06	STANDARD SYMBOLS, ABBREVIATIONS AND PATTERNS
701001-02	OFF-RD OPERATIONS, 2L, 2W, MORE THAN 15' AWAY
701006-05	OFF-ROAD OPERATIONS, 2L, 2W, 15' TO 24" FROM PAVEMENT EDGE
701201-04	LANE CLOSURE, 2L, 2W, DAY OPERATIONS ONLY
701901-05	TRAFFIC CONTROL DEVICES

BRIDGE LOCATION DESCRIPTIONS

LOCATION #1

ROUTE: FAP 762
 MARKED: ILL-32
 SECTION: (2BR) BR-1
 STATION: 235+82.75
 STRUCTURE NUMBER: 070-0015
 TYPE OF BRIDGE: Wide Flange I Beams-8 Spans (6 Beams)
 LOCATION: 4 miles south of Sullivan
 FEATURE CARRIED/SPANNED: ILL 32 over Lake Shelbyville

COLOR OF THE FINISH COAT SHALL BE GRAY, MUNSELL 5B 7/1.

Cleaning and painting of the existing structural steel shall be as specified in the special provision for "Cleaning and Painting Existing Steel Structures". All structural steel within 10' (measured along the beam) of the abutments and any expansion joints at piers, including beams, bearings and diaphragms, and the finger joint, shall be cleaned by SSPC-SP10- Near White Metal Blast Cleaning. Both fascia beams, for the entire length of the beams, shall be cleaned in their entirety by SSPC-SP10-Near White Metal Blast Cleaning.

The designated areas cleaned per Near White Metal Blast Cleaning - SSPC-SP10 shall be painted according to the requirements of Paint System 1 - OZ/E/U.

Four air monitors will be required at this location.

GENERAL NOTES

THIS SECTION SHALL BE CONSTRUCTED IN ACCORDANCE WITH THE PLANS, THE "STANDARD SPECIFICATIONS FOR ROAD AND BRIDGE CONSTRUCTION" ADOPTED APRIL 1, 2016; THE SUPPLEMENTAL SPECIFICATIONS, THE RECURRING SPECIAL PROVISIONS, AND THE SPECIAL PROVISIONS INCLUDED IN THE PROPOSAL.

THE PROPOSED PROJECT IS LOCATED AT ONE LOCATION ON ILLINOIS ROUTE 32 IN MOULTRIE COUNTY IN DISTRICT 7.

THE WORK INCLUDED IN THIS SECTION CONSISTS OF CLEANING AND PAINTING THE BRIDGE AS SPECIFIED IN THE PLANS AND SPECIAL PROVISIONS.

THE STRUCTURAL STEEL SHALL BE CLEANED AND PAINTED AS SPECIFIED IN THE SPECIAL PROVISIONS.

ALL DECK DRAINS SHALL BE PAINTED ACCORDING TO THE REQUIREMENTS OF PAINT SYSTEM 1 - OZ/E/U. ANY DAMAGE CAUSED BY THE CONTRACTOR SHALL BE REPAIRED AT THEIR OWN EXPENSE AND NO ADDITIONAL COMPENSATION WILL BE ALLOWED.

ONLY STRUCTURAL STEEL IS TO BE PAINTED. ALL OTHER SURFACES WILL BE PROTECTED FROM BEING PAINTED. ALL PAINT AND OVERSPRAY WILL BE REMOVED AT THE CONTRACTOR'S EXPENSE.

THE SSPC OP1 AND OP2 PAINTING CONTRACTOR CERTIFICATION WILL BE REQUIRED FOR THIS PROJECT.

IT WILL BE THE RESPONSIBILITY OF FRONTIER COMMUNICATIONS TO PROVIDE SUPPORT AND PROTECTION OF ITS FACILITIES DURING CONSTRUCTION. THE CONTRACTOR SHALL NOTIFY FRONTIER COMMUNICATIONS AT LEAST TWO WEEKS PRIOR TO BEGINNING WORK.

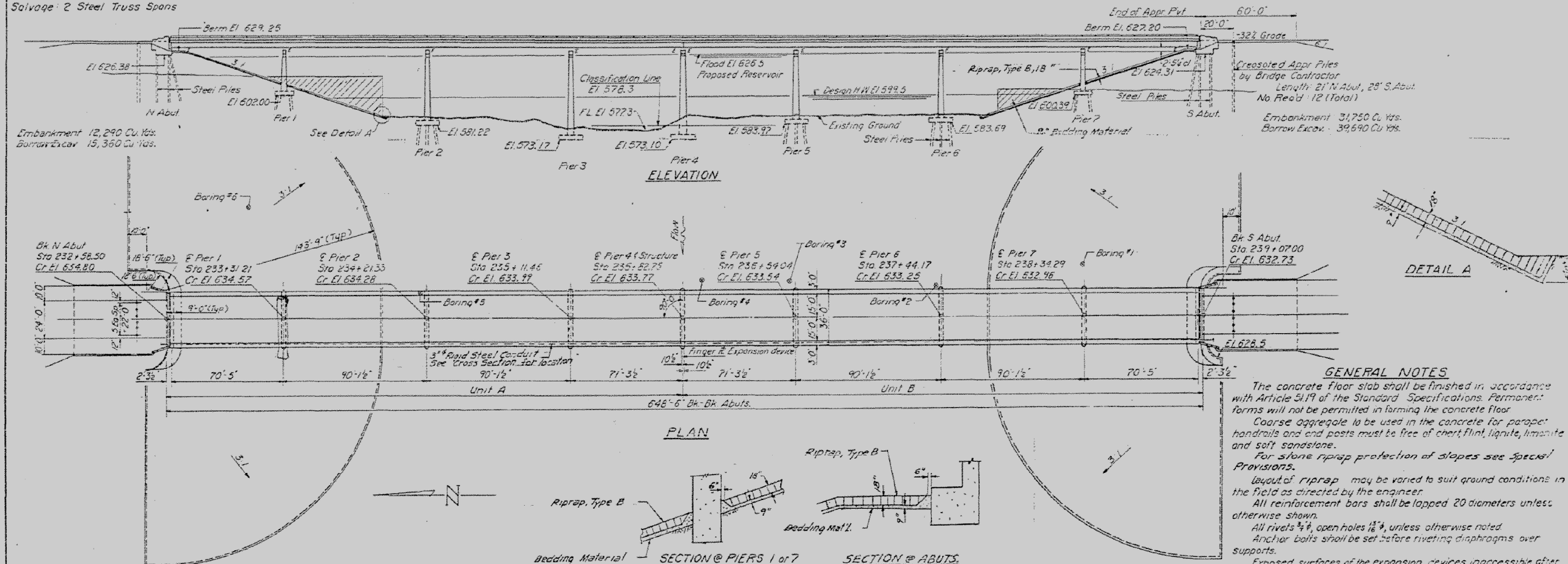
FRONTIER COMMUNICATIONS
 112 S. MAIN STREET
 SULLIVAN, ILLINOIS 61591
 PHONE: 217-821-6725
 E-MAIL: dove.love@ftr.com

FILE NAME =	USER NAME = staffamk	DESIGNED -	REVISED -	STATE OF ILLINOIS DEPARTMENT OF TRANSPORTATION	INDEX OF SHEETS, GENERAL NOTES &, LOCATION DESCRIPTIONS	F.A.P. RTE. 762	SECTION -	COUNTY MOULTRIE	TOTAL SHEETS 6	SHEET NO. 2		
pw\N\1884EB\ID\INTEC\Illinois.gov\PW\DOT\Documents\DOT Offices\District 7\Projects\74762\Drawings\CD\Drawings\0774764-ahtr\gennotes.dwg		CHECKED -	REVISED -			SCALE: NA	SHEET 1 OF 1 SHEETS	STA.	TO STA.	ILLINOIS FED. AID PROJECT CONTRACT NO. 74764		
Default		DATE -	REVISED -									

B.M. N.W. Corner Conc. Bridge rail, Lt. Sta. 233+62, El. 614.34 Hubguard
 South end of bridge, Lt. Sta. 237+77.2, El. 603.06
 Existing Structure - 2 Steel Truss & 4 R.C.D.G. Superstr. to be removed by
 Contractor before new construction
 Salvage: 2 Steel Truss Spans

STATE OF ILLINOIS
 DEPARTMENT OF PUBLIC WORKS & BUILDINGS
 DIVISION OF HIGHWAYS

PROJECT NO.	SECTION	COUNTY	SHEET NO.	TOTAL SHEETS
2BR	MOULTRIE	46	8	16



GENERAL NOTES

The concrete floor slab shall be finished in accordance with Article 51.19 of the Standard Specifications. Formwork forms will not be permitted in forming the concrete floor.

Coarse aggregate to be used in the concrete for parapet handrails and end posts must be free of chert, flint, lignite, limonite and soft sandstone.

For stone riprap protection of slopes see Special Provisions.

Layout of riprap may be varied to suit ground conditions in the field as directed by the engineer.

All reinforcement bars shall be lapped 20 diameters unless otherwise shown.

All rivets $\frac{3}{4}$ " open holes $\frac{1}{8}$ " unless otherwise noted.

Anchor bolts shall be set before riveting diaphragms over supports.

Exposed surfaces of the expansion devices inaccessible after erection shall receive two shop coats of red lead paint, other surfaces shall be given one coat of red lead paint. Anchor studs shall not be painted.

Expansion devices are included in the quantity of structural steel. Estimated Weight 7190 lbs.

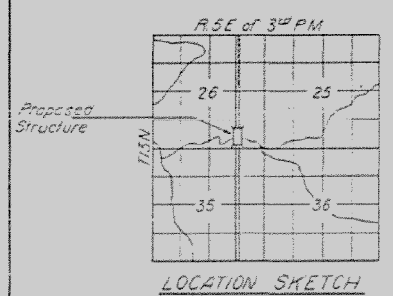
Except as otherwise provided, all structural steel shall receive one shop coat of red lead paint and two field coats of aluminum paint. See Art. 56.1 to 56.5 inclusive of the Standard Specifications.

All structural steel shall conform to ASTM A-36 Specifications for structural steel, except as noted.

Steel piles through embankment shall be driven in predrilled holes in accordance with Art. 60.9(c) of the Standard Specifications.

The contractor shall drive steel test piles, one each, at Piers 2, 5 and 5 Abut in permanent locations as directed by the Engineer, before ordering the remaining piles.

Excavation for portions of structures in the embankment shall not be classified.



WATERWAY INFORMATION

Drainage Area	408,691 Acres
Character	Level, Rolling, Cultivated
Required Opening (30'-ft)	5800 Sq. Ft.
Present Opening	3,940 Sq. Ft.
Proposed Opening	5,800 Sq. Ft.
Ordinary Water Elev.	579.4
Low Water Elev.	577.3

BRIDGE #1-37 Sta. 235+82.75
 STATE OF ILLINOIS
 S.B.I. DIST. 32 SEC. 2BR
 U.S. ARMY
 CORPS OF ENGINEERS
 ST. LOUIS DISTRICT
 BUILT 196 H20-SIG

NAME PLATE
 Sta. 213: except as shown

TOTAL BILL OF MATERIAL

Item	Unit	Super	Sub	Total
Borrow Excavation	Cu Yds.			55,050
Removal of Existing Structures	Ea.			1
Class A Excavation for Structures	Cu Yds.		510	510
Class B Excavation for Structures	Cu Yds.		200	200
Class X Concrete	Cu Yds.	712.2	1021.1	1733.3
Protective Coat	Sq Yds.	2930		2930
Structural Steel	Lbs.	371,610		671,610
Aluminum Handrail	Lin Ft.	1290		1290
Reinforcement Bars	Lbs.	133,160	72,400	205,560
Precasted Piles (20.1'-38')	Lin Ft.			294
Steel Piles (10 BP42)	Lin Ft.		3730	3730
Test Piles, Steel (CB42)	Ea.		3	3
Home Piles	Ea.		1	1
** Bridge Spill Sealant	Lbs.		1	1
Galv. Steel Conduit Attached to Bridge	Lin Ft.	656		656

* For Pier 4 and Abutments only

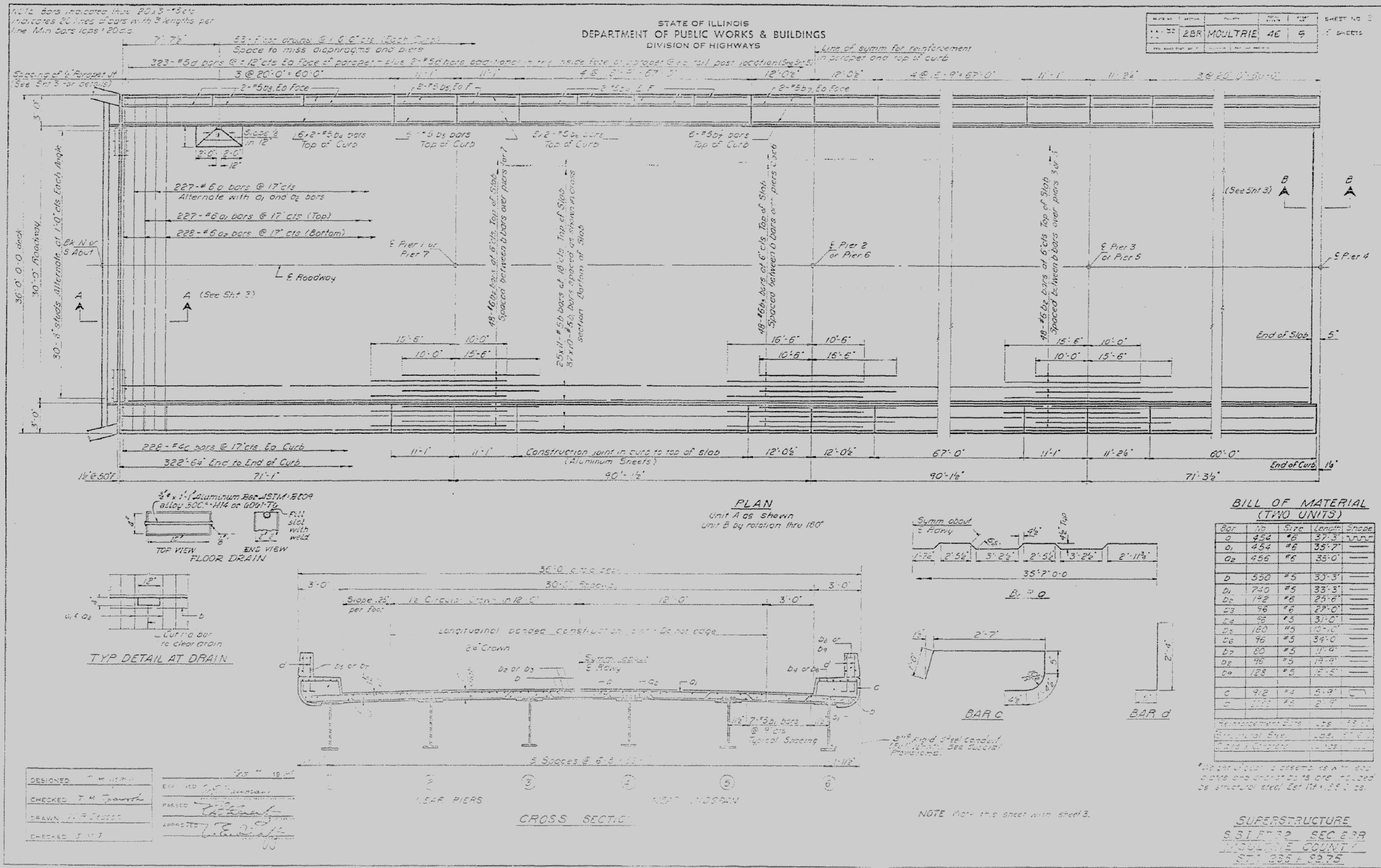
KASKASKIA RIVER
GENERAL PLAN (ELEVATIONS)
 S.B.I. DIST. 32 SEC. 2BR
 MOULTRIE COUNTY
 STA. 235 + 82.75

DESIGNED *J. M. J.*
 CHECKED *J. M. J.*
 DRAWN *W. R. Deason*
 CHECKED *J. M. J.*

EXAMINED *J. M. J.*
 PASSED *J. M. J.*
 APPROVED *J. M. J.*

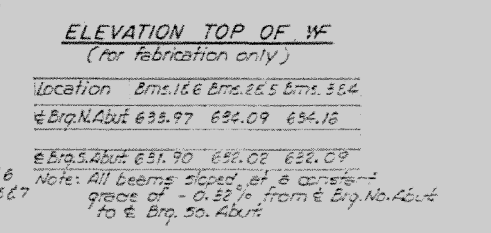
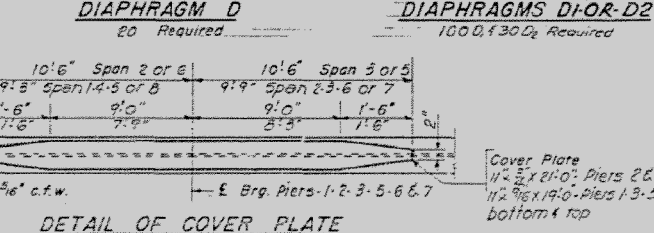
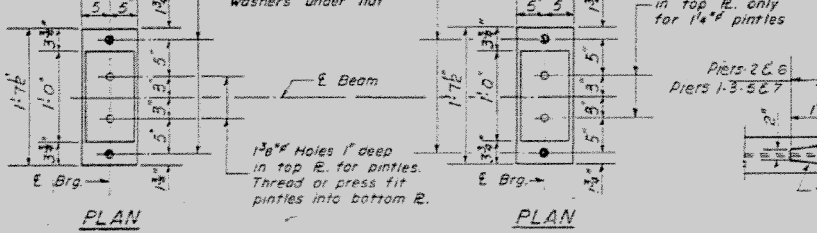
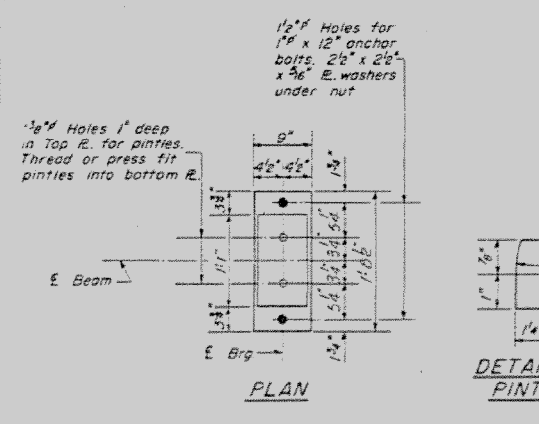
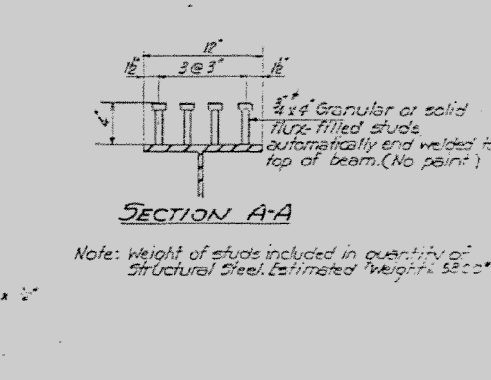
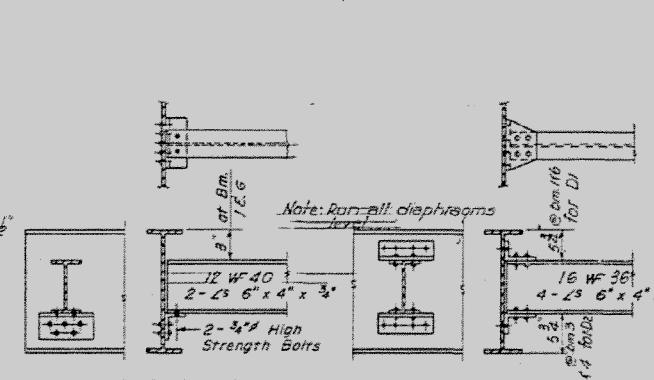
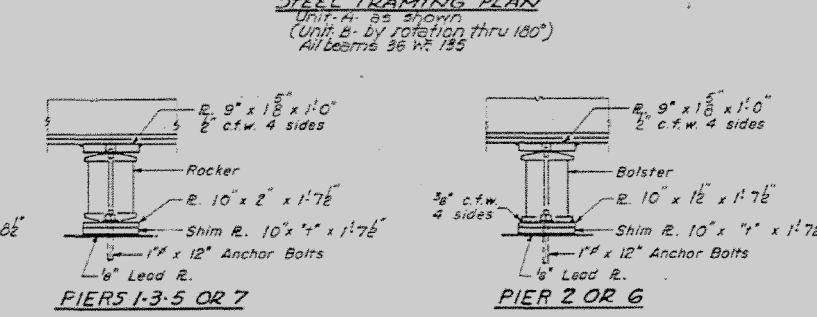
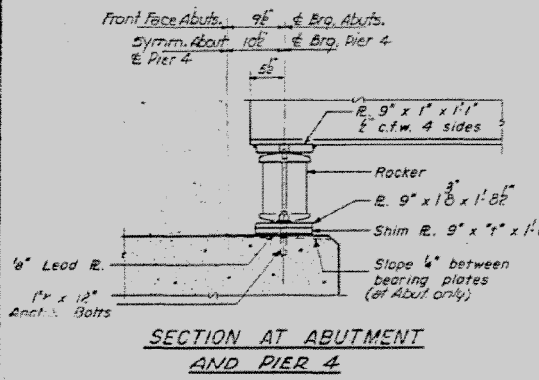
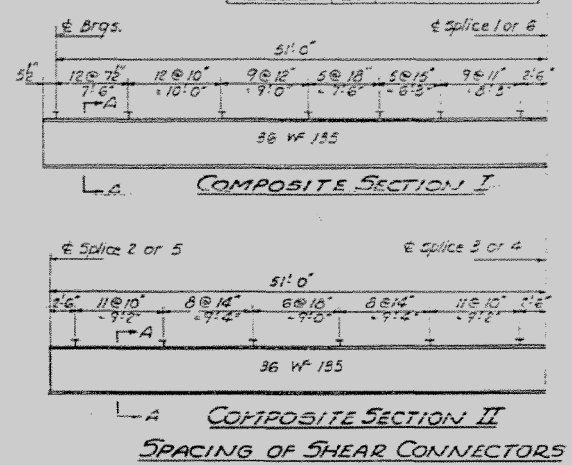
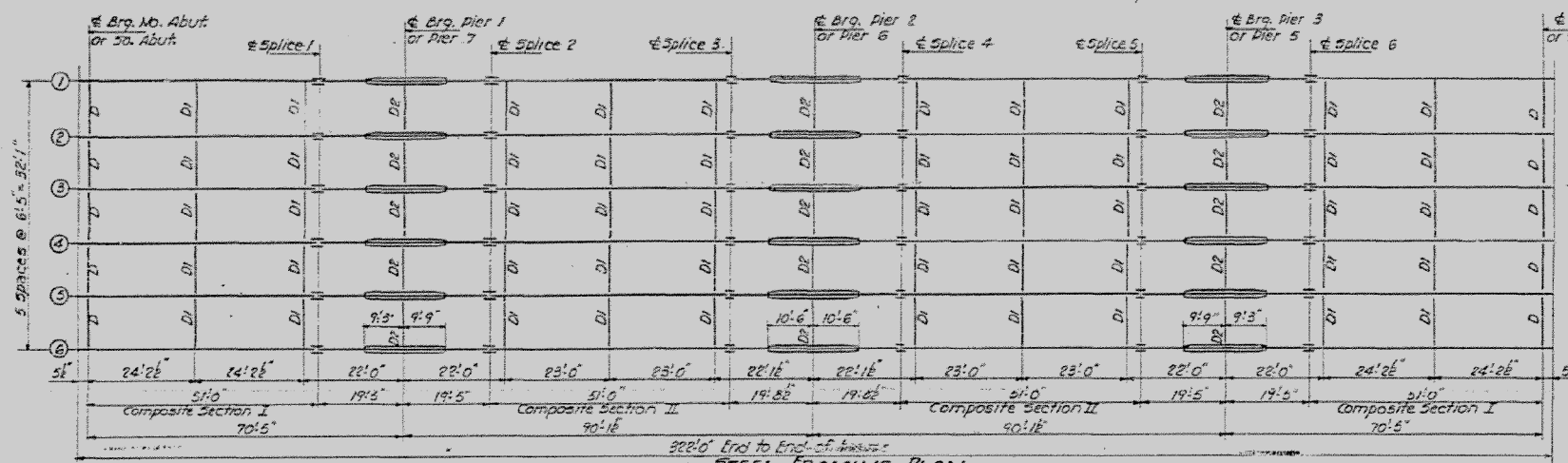
DESIGN STRESSES
 f_c = 1400 psi Super & Sub.
 f_s = 75 psi Figs.
 f_s = 20,000 psi Reinft
 f_s = 20,000 psi Struct
 n = 10

LOADING H20-S16-44

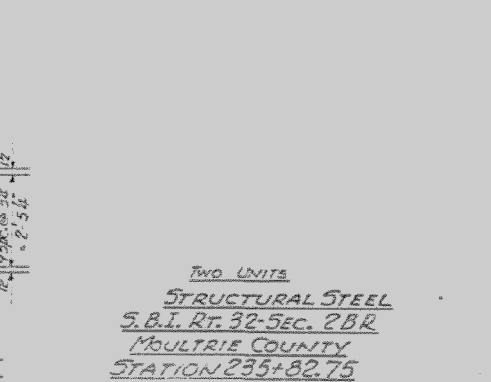
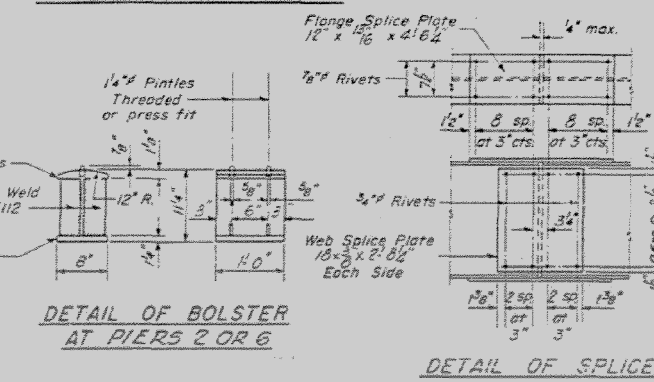
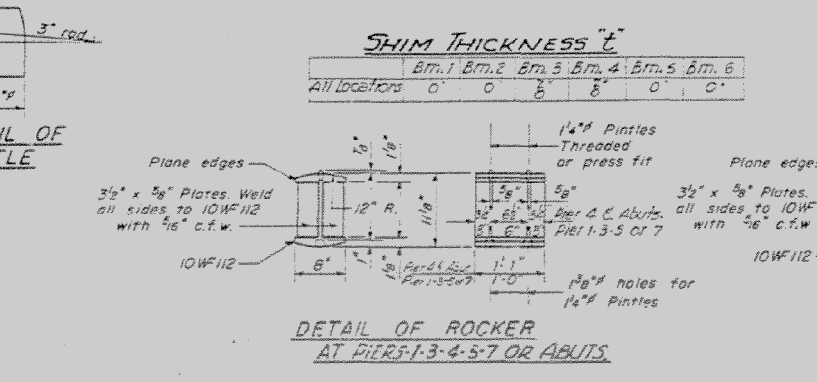


STATE OF ILLINOIS
DEPARTMENT OF PUBLIC WORKS & BUILDINGS
DIVISION OF HIGHWAYS

PROJECT NO.	SECTION	COUNTY	TOTAL SHEETS	SHEET NO.	SHEET NO.
11-084EBIDINTEG	2BR	MOULTRIE	46	13	16



DESIGNED	J. M. Sausaman Jr.	EXAMINER	J. E. Hoffman
CHECKED	J. M. Sausaman Jr.	PASSED	J. E. Hoffman
DRAWN	W. A. Sausaman Jr.	APPROVED	J. E. Hoffman
CHECKED	J. M. S.		



I-2-C 7-2-62 Rev. 11-9-62

TWO UNITS
STRUCTURAL STEEL
S.B.I. RT. 32-SEC. 2BR
MOULTRIE COUNTY
STATION 235+82.75