

STATE OF ILLINOIS
DEPARTMENT OF TRANSPORTATION

F.A. RTE.	SECTION	COUNTY	TOTAL SHEETS	SHEET NO.
VAR	*	VARIOUS	6	1
		ILLINOIS	CONTRACT NO. 66M39	

*(FY 22 TRAFFIC SIGNAL MOD) SFY

INDEX OF SHEETS

- 1 COVER SHEET
- 2 GENERAL NOTES
- 3-4 SUMMARY OF QUANTITIES
- 5-6 SCHEDULES

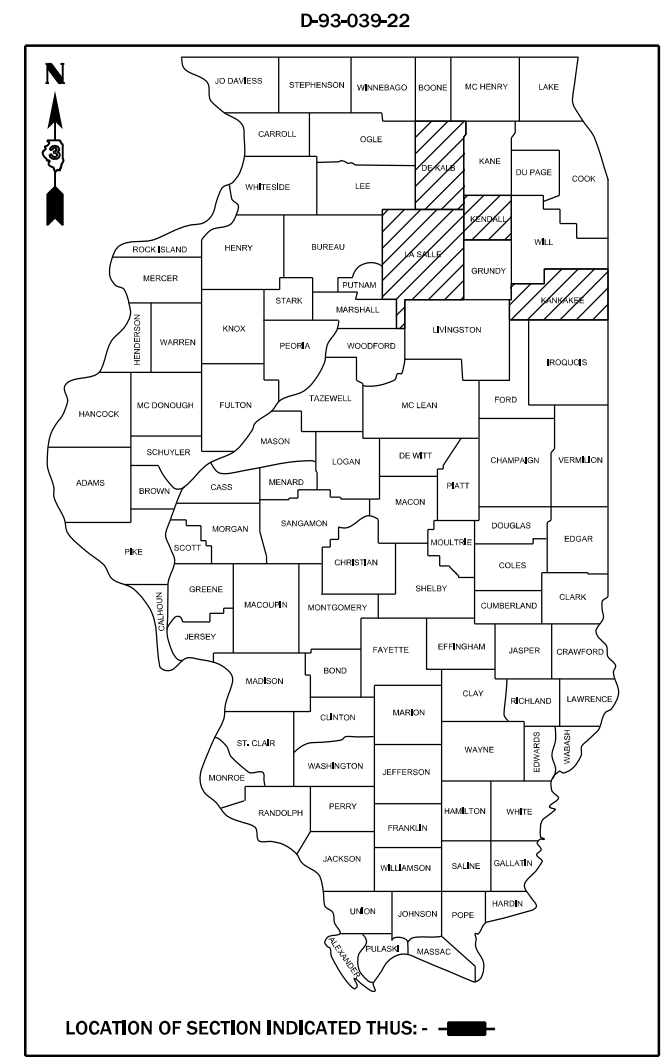
HIGHWAY STANDARDS

- 000001-08 STANDARD SYMBOLS, ABBREVIATIONS AND PATTERNS
- 001006 DECIMAL OF AN INCH AND OF A FOOT
- 701006-05 OFF-ROAD OPERATIONS 2L, 2W, 15' (4.5 m) TO 24" (600 mm) FROM PAVEMENT EDGE
- 701201-05 LANE CLOSURE, 2L, 2W, DAY ONLY, FOR SPEEDS ≥ 45 MPH
- 701701-10 URBAN LANE CLOSURE, MULTILANE INTERSECTION
- 701901-08 TRAFFIC CONTROL DEVICES
- 877001-08 STEEL MAST ARM ASSEMBLY AND POLE 16' THROUGH 55'
- 877002-04 STEEL MAST ARM ASSEMBLY AND POLE 56' THROUGH 75'
- 877006-06 STEEL MAST ARM ASSEMBLY AND POLE WITH DUAL MAST ARMS
- 877011-10 STEEL COMBINATION MAST ARM ASSEMBLY AND POLE 16' THROUGH 55'
- 877012-07 STEEL COMBINATION MAST ARM ASSEMBLY AND POLE 56' THROUGH 75'
- 880006-01 TRAFFIC SIGNAL MOUNTING DETAILS

**PROPOSED
HIGHWAY PLANS**

**VARIOUS ROUTES
SECTION (FY 22 TRAFFIC SIGNAL MOD) SFY
PROJECT: HSIP - UAZF (731)
TRAFFIC SIGNAL MODERNIZATION
VARIOUS COUNTIES**

C-93-062-22



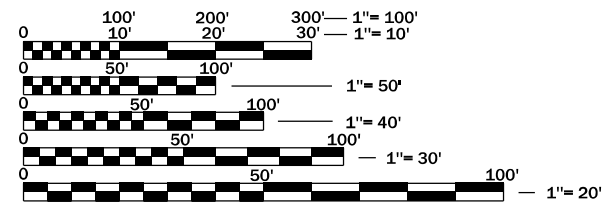
SEE SHEET 2 FOR FUNCTIONAL CLASSIFICATION AND TRAFFIC INFORMATION

STATE OF ILLINOIS
DEPARTMENT OF TRANSPORTATION

SUBMITTED July 08, 2022
[Signature] REGIONAL ENGINEER

August 19, 2022
[Signature] ENGINEER OF DESIGN AND ENVIRONMENT

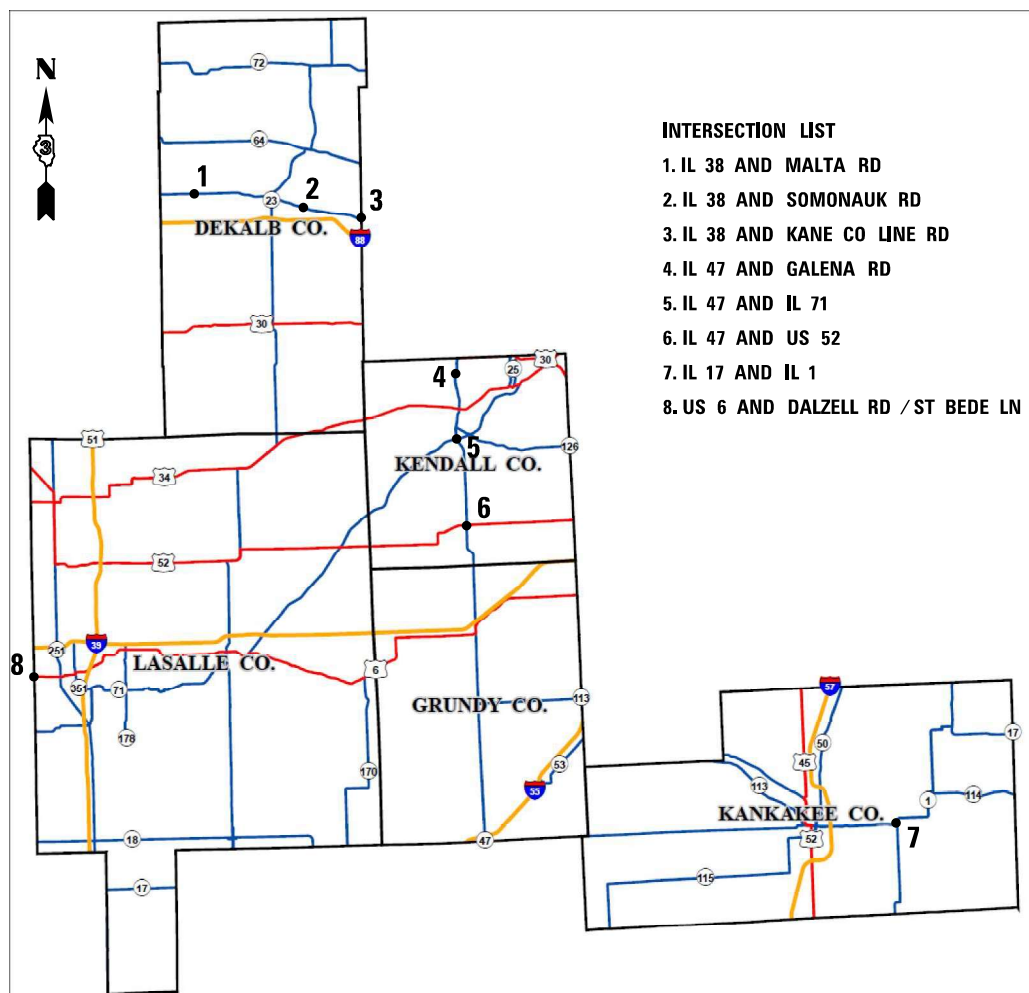
August 19, 2022
[Signature] DIRECTOR OF HIGHWAYS PROJECT IMPLEMENTATION



FULL SIZE PLANS HAVE BEEN PREPARED USING STANDARD ENGINEERING SCALES. REDUCED SIZED PLANS WILL NOT CONFORM TO STANDARD SCALES. IN MAKING MEASUREMENTS ON REDUCED PLANS, THE ABOVE SCALES MAY BE USED.

J.U.L.I.E.
JOINT UTILITY LOCATION INFORMATION FOR EXCAVATION
1-800-892-0123
OR 811

PROJECT ENGINEER: JOE KANNEL, P.E.
UNIT CHIEF: MARC BUDZYNSKI, P.E.
DISTRICT 3 NO. (815) 434-6131
CONTRACT NO. 66M39



- INTERSECTION LIST**
1. IL 38 AND MALTA RD
 2. IL 38 AND SOMONAUK RD
 3. IL 38 AND KANE CO LINE RD
 4. IL 47 AND GALENA RD
 5. IL 47 AND IL 71
 6. IL 47 AND US 52
 7. IL 17 AND IL 1
 8. US 6 AND DALZELL RD / ST BEDE LN

GROSS & NET LENGTH = VARIOUS INTERSECTIONS

**PRINTED BY THE AUTHORITY
OF THE STATE OF ILLINOIS**

TRAFFIC SIGNAL GENERAL NOTES

THE CONTRACTOR SHALL BE RESPONSIBLE FOR PROTECTING UTILITY PROPERTY DURING CONSTRUCTION OPERATIONS AS OUTLINED IN ARTICLE 107.31 OF THE STANDARD SPECIFICATIONS. A MINIMUM OF 48 HOURS ADVANCE NOTICE IS REQUIRED FOR NON-EMERGENCY WORK. THE JULIE NUMBER IS 800-892-0123.

ALL TRAFFIC CONTROL AND OTHER ADVISORY SIGNS NEEDED FOR CONSTRUCTION ARE TO BE FURNISHED BY THE CONTRACTOR IN ACCORDANCE WITH SECTION 701 OF THE STANDARD SPECIFICATIONS.

ALL TRAFFIC SIGNAL HEADS SHALL BE 12-INCH POLYCARBONATE

TRAFFIC SIGNAL HEADS SHALL BE PROPERLY COVERED PRIOR TO INTERSECTION TURN-ON OR AS DIRECTED BY THE ENGINEER. THIS COST SHALL BE INCLUDED WITH THE COST OF THE ASSOCIATED TRAFFIC SIGNAL PAY ITEMS.

THE ELECTRICAL CONDUCTORS FOR ALL TRAFFIC SIGNAL HEADS SHALL BE SOLID, SOFT COPPER.

ALL THREADS OF BOLTS USED IN THE ASSEMBLY OF TRAFFIC SIGNAL COMPONENTS SHALL BE COATED WITH A NON-LEAD BASED ANTI-SEIZE COMPOUND, SIMILAR TO LEAD PLATE, PRIOR TO ASSEMBLY.

ALL HARDWARE SHALL BE TIGHTENED AND WELL SECURED, CABLES SHALL BE NEATLY WOUND IN HANDHOLES. CABLES SHALL BE NEATLY TRAINED IN THE CONTROLLER CABINET.

BACKPLATES SHALL BE POLYCARBONATE, LOUVERED FORMED BACKPLATES.

ALL VEHICLE AND PEDESTRIAN SIGNAL HEAD MOUNTING BRACKETS SHALL BE MADE OF STEEL OR ALUMINUM.

ALL AREAS DISTURBED BY THE CONTRACTOR SHALL BE RESTORED WITH SEED OR SOD TO THE SATISFACTION OF THE ENGINEER. SEEDING OR SODDING SHALL NOT BE PERMITTED AT ANY TIME WHEN THE GROUND IS FROZEN, WET, OR IN AN UNTILLABLE CONDITION.

COMMITMENTS:

INTERSECTION	FUNCTIONAL CLASSIFICATION	MAJOR AADT	MINOR AADT
IL 38 AND MALTA RD	OTHER ARTERIAL	6,925	2,050
IL 38 AND SOMONAUK RD	MINOR ARTERIAL	9,350	4,400
IL 38 AND KANE CO LINE RD	MINOR ARTERIAL	8,050	3,375
IL 47 AND GALENA RD	OTHER ARTERIAL	18,500	6,700
IL 47 AND IL 71	OTHER ARTERIAL	10,350	8,600
IL 47 AND US 52	OTHER ARTERIAL	5,225	2,500
IL 17 AND IL 1	OTHER ARTERIAL	8,350	3,850
US 6 AND DALZELL RD/ST BEDE LN	OTHER ARTERIAL	11,350	2,700

STATE OF ILLINOIS
DEPARTMENT OF TRANSPORTATION
DISTRICT THREE
AS BUILT INFORMATION

STATE OF ILLINOIS
DEPARTMENT OF TRANSPORTATION
DISTRICT THREE

SUPERVISING CONSTRUCTION FIELD ENGINEER

PREPARED BY: _____
DISTRICT STUDIES & PLANS ENGINEER

RESIDENT ENGINEER / TECHNICIAN

DATE: _____

START & END DATES
OF CONSTRUCTION: _____

EXAMINED BY: _____
DISTRICT CONSTRUCTION ENGINEER

INSPECTORS: _____

DISTRICT MATERIALS ENGINEER

DISTRICT OPERATIONS ENGINEER

*(FY 22 TRAFFIC SIGNAL MOD) SFY

MODEL: Default
FILE: \\nas01-01\pub\dot-csv\benlley.com\PHWDOT\Documents\DOT Offices\Burlin: 3\Projects\0366M39\CADD\0366M39-dtr-cover.dgn

USER NAME = marc.budzynski	DESIGNED -	REVISED -
	DRAWN -	REVISED -
PLOT SCALE = 100,0000 ' / in.	CHECKED -	REVISED -
PLOT DATE = 7/8/2022	DATE -	REVISED -

**STATE OF ILLINOIS
DEPARTMENT OF TRANSPORTATION**

GENERAL NOTES

SCALE: SHEET OF SHEETS STA. TO STA.

F.A. RTE.	SECTION	COUNTY	TOTAL SHEETS	SHEET NO.
VAR	*	VARIES	6	2
CONTRACT NO. 66M39				
ILLINOIS FED. AID PROJECT				

CODE NO.	ITEM	UNIT	TOTAL QUANTITY	CONSTRUCTION CODE					
				DEKALB CO	DEKALB CO	KANKAKEE CO	KENDALL CO	KENDALL CO	LASALLE CO
				TRAFFIC SIGNALS	TRAFFIC SIGNALS	TRAFFIC SIGNALS	TRAFFIC SIGNALS	TRAFFIC SIGNALS	TRAFFIC SIGNALS
				0021 URBAN	0021 RURAL	0021 RURAL	0021 URBAN	0021 RURAL	0021 URBAN
67100100	MOBILIZATION	L SUM	1.0	0.15	0.20	0.15	0.20	0.15	0.15
70100450	TRAFFIC CONTROL AND PROTECTION, STANDARD 701201	L SUM	1.0	0.00	0.40	0.30	0.00	0.30	0.00
70102635	TRAFFIC CONTROL AND PROTECTION, STANDARD 701701	L SUM	1.0	0.30	0.00	0.00	0.40	0.00	0.30
* 72000100	SIGN PANEL - TYPE 1	SQ FT	315	75	97.5	0	75	0	67.5
* 72000200	SIGN PANEL - TYPE 2	SQ FT	120	20	40	0	20	0	40
* 72400310	REMOVE SIGN PANEL - TYPE 1	SQ FT	89	18	18	0	20	0	33
* 72400320	REMOVE SIGN PANEL - TYPE 2	SQ FT	144.5	27.5	47	0	20	0	50
85000200	MAINTENANCE OF EXISTING TRAFFIC SIGNAL INSTALLATION	EACH	8	1	2	1	2	1	1
88040070	SIGNAL HEAD, POLYCARBONATE, LED, 1-FACE, 3-SECTION, BRACKET MOUNTED	EACH	8	0	4	0	3	0	1
88040090	SIGNAL HEAD, POLYCARBONATE, LED, 1-FACE, 3-SECTION, MAST ARM MOUNTED	EACH	28	6	11	0	6	0	5
88040110	SIGNAL HEAD, POLYCARBONATE, LED, 1-FACE, 4-SECTION, BRACKET MOUNTED	EACH	4	0	4	0	0	0	0
88040120	SIGNAL HEAD, POLYCARBONATE, LED, 1-FACE, 4-SECTION, MAST ARM MOUNTED	EACH	2	0	2	0	0	0	0
88040150	SIGNAL HEAD, POLYCARBONATE, LED, 1-FACE, 5-SECTION, BRACKET MOUNTED	EACH	14	4	5	0	2	0	3
88040160	SIGNAL HEAD, POLYCARBONATE, LED, 1-FACE, 5-SECTION, MAST ARM MOUNTED	EACH	16	6	5	0	2	0	3

*= SPECIALTY ITEM

MODEL: Default
 FILE: \\nas01-01\pub\user-civ\benfley.com\PHWDOT\Documents\DOT Offices\Bentley - Projects\0366M39\0366M39.dwg
 PROJECT: 0366M39\0366M39.dwg

*(FY 22 TRAFFIC SIGNAL MOD) SFY

USER NAME = marc.budzynski	DESIGNED -	REVISED -
PLOT SCALE = 100,0000' / in.	DRAWN -	REVISED -
PLOT DATE = 7/8/2022	CHECKED -	REVISED -
	DATE -	REVISED -

**STATE OF ILLINOIS
DEPARTMENT OF TRANSPORTATION**

SUMMARY OF QUANTITIES

SCALE: SHEET OF SHEETS STA. TO STA.

F.A. RTE.	SECTION	COUNTY	TOTAL SHEETS	SHEET NO.
VAR	*	VARIES	6	3
CONTRACT NO. 66M39				
ILLINOIS FED. AID PROJECT				

CODE NO.	ITEM	UNIT	TOTAL QUANTITY	CONSTRUCTION CODE						
				DEKALB CO	DEKALB CO	KANKAKEE CO	KENDALL CO	KENDALL CO	LASALLE CO	
				TRAFFIC SIGNALS 0021 URBAN	TRAFFIC SIGNALS 0021 RURAL	TRAFFIC SIGNALS 0021 RURAL	TRAFFIC SIGNALS 0021 URBAN	TRAFFIC SIGNALS 0021 RURAL	TRAFFIC SIGNALS 0021 URBAN	
			90% FED 10% STATE							
89502210	MODIFY EXISTING CONTROLLER CABINET	EACH	5	1	2	0	1	0	1	
89502375	REMOVE EXISTING TRAFFIC SIGNAL EQUIPMENT	EACH	8	1	2	1	2	1	1	
X1400318	TRAFFIC SIGNAL BACKPLATE, LOUVERED, FORMED PLASTIC, SPECIAL	EACH	120	16	31	18	23	20	12	
X8809005	LED SIGNAL FACE, LENS COVER	EACH	497	68	119	66	112	84	48	

MODEL: Default
 FILE: \\nas01-01-01\share\benriley.com\PHWDOT\Documents\DOT Offices\Bentley - Projects\0366M39\CAD\0366M39-plt-cover.dgn

*(FY 22 TRAFFIC SIGNAL MOD) SFY

USER NAME = marc.budzynski	DESIGNED -	REVISED -	STATE OF ILLINOIS DEPARTMENT OF TRANSPORTATION	SUMMARY OF QUANTITIES				F.A. RTE.	SECTION	COUNTY	TOTAL SHEETS	SHEET NO.
PLOT SCALE = 100.0000' / in.	DRAWN -	REVISED -						VAR	*	VARIES	6	4
PLOT DATE = 7/8/2022	CHECKED -	REVISED -		SCALE:	SHEET	OF	SHEETS	STA.	TO STA.	CONTRACT NO. 66M39		
	DATE -	REVISED -								ILLINOIS FED. AID PROJECT		

TRAFFIC SIGNAL SCHEDULE

INTERSECTION	SIGNAL HEAD 3-SECTION MAST-ARM MOUNTED	SIGNAL HEAD 3-SECTION BRACKET MOUNTED	SIGNAL HEAD 4-SECTION MAST-ARM MOUNTED	SIGNAL HEAD 4-SECTION BRACKET MOUNTED	SIGNAL HEAD 5-SECTION MAST-ARM MOUNTED	SIGNAL HEAD 5-SECTION BRACKET MOUNTED	TRAFFIC SIG BACKPLATE, RETRO- REFLECTIVE	LED SIGNAL FACE, LENS COVER	MAINT OF EXIST TRAFFIC SIGNAL EQUIPMENT	REMOVE EXIST TRAFFIC SIGNAL EQUIPMENT	MODIFY EXIST CONTROLLER CABINET
	EACH	EACH	EACH	EACH	EACH	EACH	EACH	EACH	EACH	EACH	EACH
URBAN											
DEKALB COUNTY											
IL 38 AND SOMONAUK RD	6	0	0	0	6	4	16	68	1	1	1
URBAN DEKALB TOTAL	6	0	0	0	6	4	16	68	1	1	1
KENDALL COUNTY											
IL 47 AND GALENA RD	6	3	0	0	2	2	13	47	1	1	1
IL 47 AND IL 71	-	-	-	-	-	-	10	65	1	1	-
URBAN KENDALL TOTAL	6	3	0	0	2	2	23	112	2	2	1
LASALLE COUNTY											
US 6 AND DALZELL RD/ST BEDE LN	5	1	0	0	3	3	12	48	1	1	1
URBAN LASALLE TOTAL	5	1	0	0	3	3	12	48	1	1	1
URBAN TOTAL	17	4	0	0	11	9	69	294	5	5	3
RURAL											
DEKALB COUNTY											
IL 38 AND MALTA RD*	3	-	2	4	1	1	11	43	1	1	1
IL 38 AND KANE CO LINE RD	8	4	0	0	4	4	20	76	1	1	1
RURAL DEKALB TOTAL	11	4	2	4	5	5	31	119	2	2	2
KENDALL COUNTY											
IL 47 AND US 52	-	-	-	-	-	-	20	84	1	1	-
RURAL KENDALL TOTAL	0	0	0	0	0	0	20	84	1	1	0
KANKAKEE COUNTY											
IL 17 AND IL 1	-	-	-	-	-	-	18	66	1	1	-
RURAL KANKAKEE TOTAL	0	0	0	0	0	0	18	66	1	1	0
RURAL TOTAL	11	4	2	4	5	5	51	203	3	3	2
TOTAL	28	8	2	4	16	14	120	497	8	8	5

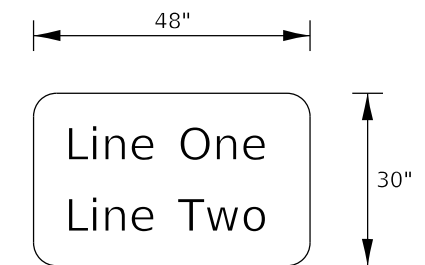
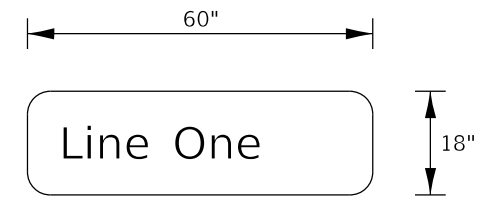
*THE TWO EXISTING SB 3-SECTION BRACKET MOUNTED HEADS SHALL BE REPLACED WITH 4-SECTION BRACKET MOUNTED HEADS (ONE WITH LEFT GREEN ARROW AND ONE WITH RIGHT GREEN ARROW)

MODEL: Default
 FILE: \\nas01-01\public\civ\benfley.com\PROJECTS\DOT\Documents\DOT\Office\benfley.com\PROJECTS\DOT\Documents\DOT\66M39\trc-cover.dgn

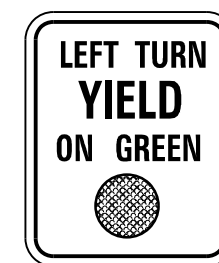
*(FY 22 TRAFFIC SIGNAL MOD) SFY

USER NAME = marc.budzynski	DESIGNED -	REVISED -	STATE OF ILLINOIS DEPARTMENT OF TRANSPORTATION	SCHEDULES				F.A. RTE.	SECTION	COUNTY	TOTAL SHEETS	SHEET NO.
PLOT SCALE = 100,0000' / in.	DRAWN -	REVISED -						VAR	*	VARIES	6	5
PLOT DATE = 7/8/2022	CHECKED -	REVISED -		SCALE: SHEET OF SHEETS STA. TO STA.				CONTRACT NO. 66M39				
	DATE -	REVISED -						ILLINOIS FED. AID PROJECT				

SIGN REMOVAL AND REPLACEMENT SCHEDULE							
INTERSECTION	DESCRIPTION	SIZE	QUANTITY	REMOVE SIGN PANEL TYPE 1	SIGN PANEL TYPE 1	REMOVE SIGN PANEL TYPE 2	SIGN PANEL TYPE 2
		INCHES	EACH	SQ FT	SQ FT	SQ FT	SQ FT
URBAN							
DEKALB COUNTY							
IL 38 AND SOMONAUK RD	LEFT TURN YIELD ON GREEN (R10-12)	30 x 36	8	-	60.0	-	-
	IL 38 STREET SIGNS	60 x 18	2	18.0	15.0	-	-
	SOMONAUK RD STREET SIGNS	48 x 30	2	-	-	27.5	20.0
URBAN DEKALB TOTAL				18.0	75.0	27.5	20.0
KENDALL COUNTY							
IL 47 AND GALENA RD	LEFT TURN YIELD ON GREEN (R10-12)	30 x 36	8	5.0	60.0	-	-
	IL 47 STREET SIGNS	60 x 18	2	15.0	15.0	-	-
	GALENA RD STREET SIGNS	48 x 30	2	-	-	20.0	20.0
URBAN KENDALL TOTAL				20.0	75.0	20.0	20.0
LASALLE COUNTY							
US 6 AND DALZELL RD/ST BEDE LN	LEFT TURN YIELD ON GREEN (R10-12)	30 x 36	7	15.0	52.5	-	-
	US 6 STREET SIGNS	60 x 18	2	18.0	15.0	-	-
	ST. BEDE LN STREET SIGN	48 x 30	2	-	-	27.5	20.0
	DALZELL RD STREET SIGN	48 x 30	2	-	-	22.5	20.0
URBAN LASALLE TOTAL				33.0	67.5	50.0	40.0
URBAN TOTAL				71.0	217.5	97.5	80.0
RURAL							
DEKALB COUNTY							
IL 38 AND MALTA RD	LEFT TURN YIELD ON GREEN (R10-12)	30 x 36	2	-	15.0	-	-
	IL 38 STREET SIGN	60 x 18	1	-	7.5	12.0	-
	MALTA RD STREET SIGNS	48 x 30	2	-	-	11.0	20.0
IL 38 AND KANE CO LINE RD	LEFT TURN YIELD ON GREEN (R10-12)	30 x 36	8	-	60.0	-	-
	IL 38 STREET SIGNS	60 x 18	2	-	15.0	24.0	-
	COUNTY LINE RD STREET SIGNS	48 x 30	2	18.0	-	-	20.0
RURAL DEKALB TOTAL				18.0	97.5	47.0	40.0
RURAL TOTAL				18.0	97.5	47.0	40.0
TOTAL				89.0	315.0	144.5	120.0



UPPER CASE/LOWER CASE LETTERING, 8"
TYPE ZZ SHEETING



R10-12, 30" x 36"
TYPE AP SHEETING

MODEL: Default
 FILE: \\nas01-01\pub\user-civ\benfley.com\PHWDOT\Documents\DOT Offices\benfley.com\PHWDOT\Documents\66M39\66M39-act-cover.dgn

(FY 22 TRAFFIC SIGNAL MOD) SFY

USER NAME = marc.budzynski	DESIGNED -	REVISED -	STATE OF ILLINOIS DEPARTMENT OF TRANSPORTATION	SCHEDULES				F.A. RTE.	SECTION	COUNTY	TOTAL SHEETS	SHEET NO.
PLOT SCALE = 100.0000' / in.	DRAWN -	REVISED -		SCALE:	SHEET	OF	SHEETS	STA.	TO STA.	VARIES	6	6
PLOT DATE = 7/8/2022	CHECKED -	REVISED -		CONTRACT NO. 66M39								
	DATE -	REVISED -		ILLINOIS FED. AID PROJECT								