

STATE OF ILLINOIS
DEPARTMENT OF TRANSPORTATION

| F.A.I. RTE. | SECTION | COUNTY | TOTAL SHEETS | SHEET NO. |
|-------------|-----------|-----------|--------------------|-----------|
| 39 | (201-3)TR | Winnebago | 26 | 1 |
| | | ILLINOIS | CONTRACT NO. 64R70 | |

PROPOSED HIGHWAY PLANS

FAI ROUTE 39 (I-39/US 20)
SECTION (201-3)TR
PROJECT NHPP-WPKZ(117)
TREE REMOVAL
WINNEBAGO COUNTY
I-39 FROM 0.8 MI N OF BLACKHAWK RD TO 0.3 MI E OF MULFORD RD & US 20 FROM 0.6 MI W OF MULFORD RD TO I-39

FOR INDEX OF SHEETS, SEE SHEET NO. 2
FOR STATE STANDARDS, SEE SHEET NO. 2

HIGHWAY CLASSIFICATION
F.A.P. ROUTE 39 (I-39)
CLASSIFICATION: INTERSTATE
ADT: 24,500 (2019)
P.V. = 15,100
M.U. = 7,800
S.U. = 1,600
POSTED SPEED: 70 MPH

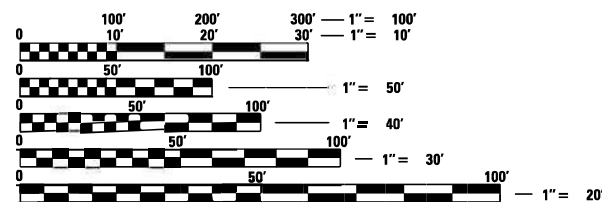
CHERRY VALLEY SECTION 9

C-92-090-22

I-39 - PROJECT BEGINS
STA 2571 + 69.15

I-39 - PROJECT ENDS
STA 2620 + 83

RAMP BD - PROJECT BEGINS
STA 215 + 24.17

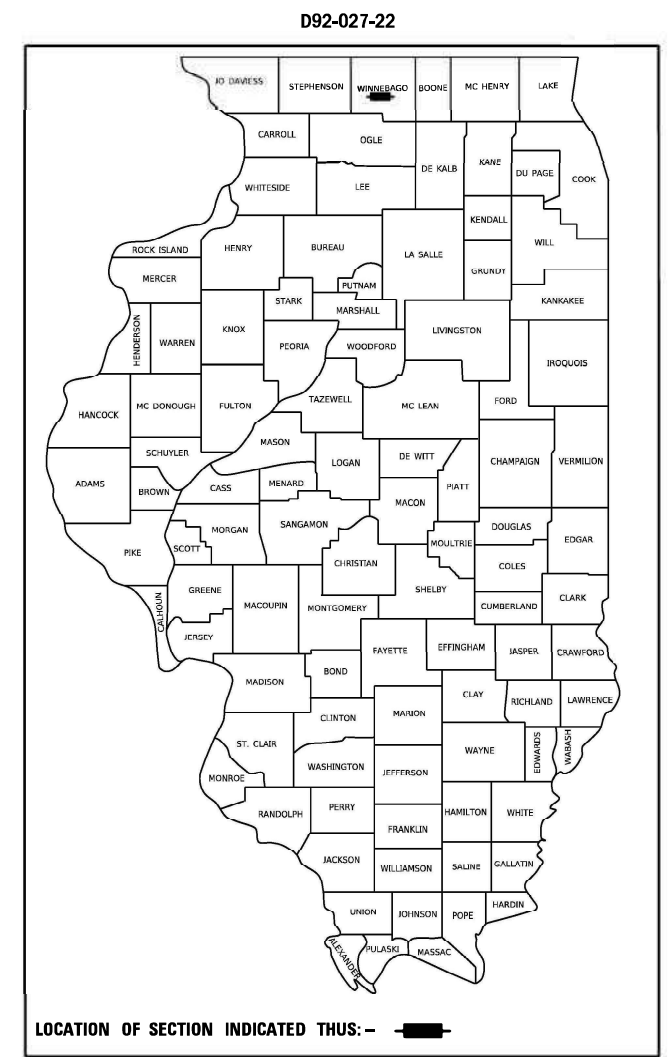
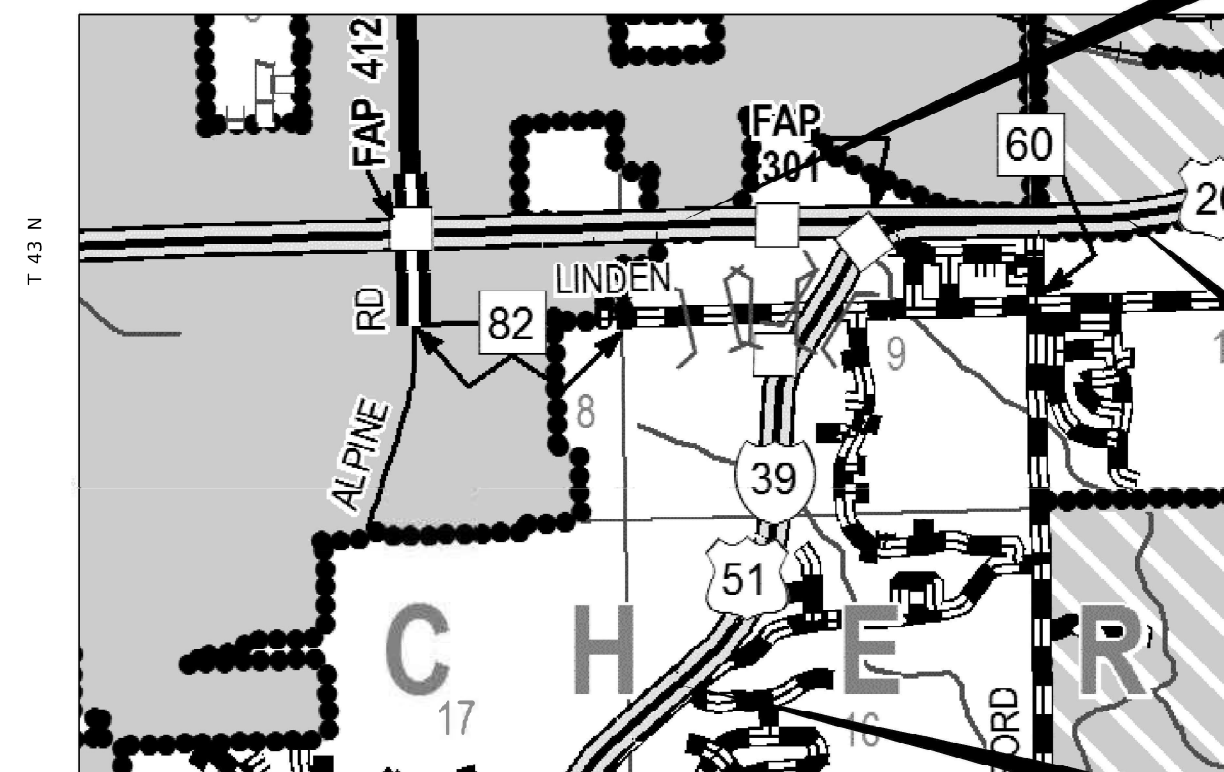


FULL SIZE PLANS HAVE BEEN PREPARED USING STANDARD ENGINEERING SCALES. REDUCED SIZED PLANS WILL NOT CONFORM TO STANDARD SCALES. IN MAKING MEASUREMENTS ON REDUCED PLANS, THE ABOVE SCALES MAY BE USED.

J.U.L.I.E.
JOINT UTILITY LOCATION INFORMATION FOR EXCAVATORS
1-800-892-0123
OR 811

PROJECT ENGINEER: ANDREW LEE
PROJECT MANAGER: ROBERT BARTON
DENNISSE OTERO-LOPEZ (815)-284-5924
EMAIL: Dennisse.Otero-Lopez@illinois.gov
CONTRACT NO. 64R70

GROSS LENGTH = 24,741.39 FT. = 4.686 MILE
NET LENGTH = 24,741.39 FT. = 4.686 MILE



STATE OF ILLINOIS
DEPARTMENT OF TRANSPORTATION
SUBMITTED 06/24 2022
[Signature]
REGIONAL ENGINEER
August 19, 2022
[Signature]
ENGINEER OF DESIGN AND ENVIRONMENT
August 19, 2022
[Signature]
DIRECTOR OF HIGHWAYS PROJECT IMPLEMENTATION

PRINTED BY THE AUTHORITY
OF THE STATE OF ILLINOIS

INDEX OF SHEETS

- 1 COVER SHEET
- 2 INDEX OF SHEETS / STATE STANDARDS
- 3 GENERAL NOTES
- 4 SUMMARY OF QUANTITIES
- 5 - 12 SCHEDULE OF QUANTITIES
- 13 - 26 TREE REMOVAL DETAILS

HIGHWAY STANDARDS

- 000001-08 STANDARD SYMBOLS, ABBREVIATIONS AND PATTERNS
- 701001-02 OFF-ROAD OPERATIONS, 2L, 2W, MORE THAN 15' AWAY
- 701006-05 OFF-ROAD OPERATIONS, 2L, 2W, 15' TO 24" FROM PAVEMENT EDGE
- 701011-04 OFF ROAD MOVING OPERATIONS, 2L, 2W, DAY ONLY
- 701101-05 OFF-ROAD OPERATIONS, MULTILANE, 15' TO 24" FROM PAVEMENT EDGE
- 701106-02 OFF-ROAD OPERATIONS, MULTILANE, MORE THAN 15' AWAY
- 701201-05 LANE CLOSURE, 2L, 2W, DAY ONLY FOR SPEEDS \geq 45 MPH
- 701456-05 PARTIAL EXIT RAMP CLOSURE FREEWAY / EXPRESSWAY
- 701901-08 TRAFFIC CONTROL DEVICES

MODEL: Default
 FILE NAME: p:\ultra\paw.bentley.com\PIV\DOT\Documents\DOT Office\Dir\dir_2\Project\1211106\CADD\plan\CAD\Drawings\64R70 - Tree Removal\12_64R70-sh-covers.dgn

| | | |
|----------------------------------|------------|-----------|
| USER NAME = Dennisse,Otero-Lopez | DESIGNED - | REVISED - |
| | DRAWN - | REVISED - |
| PLOT SCALE = 100,0000 ' / in. | CHECKED - | REVISED - |
| PLOT DATE = 6/28/2022 | DATE - | REVISED - |

**STATE OF ILLINOIS
 DEPARTMENT OF TRANSPORTATION**

| | | | |
|--|-------|----|--------|
| INDEX OF SHEETS & HIGHWAY STANDARDS | | | |
| SCALE: | SHEET | OF | SHEETS |
| | STA. | TO | STA. |

| | | | | |
|---------------------------|-----------|-----------|--------------|-----------|
| F.A.I. RTE. | SECTION | COUNTY | TOTAL SHEETS | SHEET NO. |
| 39 | (201-3)TR | WINNEBAGO | 26 | 2 |
| CONTRACT NO. 64R70 | | | | |
| ILLINOIS FED. AID PROJECT | | | | |

GENERAL NOTES

The following listed utilities located within the project limits or immediately adjacent to the project construction limits are members of JULIE:

| | | | |
|---------------------|--------------------------|----------------|--------------|
| Mr. Carl Donahue | ATT Communications | Telephone | 630-552-4677 |
| Mr. Michael Norris | Buckeye Partners, LP | Petroleum | 219-313-5321 |
| Mr. Amir Mahmutagic | Com Ed Company | Electric | 630-437-2212 |
| Mr. Donald Belmore | Frontier | Telephone | 815-544-6171 |
| Mr. Héctor García | ATT | Telephone | 630-573-5465 |
| Mr. Saki Forah | Nicor Gas Co. | Gas | 630-388-3019 |
| Mr. Kyle Gruhn | RRWRD | Sewer | 815-387-7400 |
| Mr. Keith Koshinski | Comcast Cable | CATV | 224-229-5432 |
| Mr. Deven Barnhill | Windstrwam | Telephone | 815-592-3395 |
| Mr. Chuck Freeman | V. Cherry Valley | Water & Sewer | 815-332-3441 |
| Mr. Dan Galovich | Aldrige Electric | Communications | 815-467-0428 |
| Mr. Mark Thompson | Natural Gas Pipiline Co. | Pipeline | |
| Mr. Lance Sandy | iFiber | | 815-753-5798 |

IDOT is not a member of JULIE. If you are near any overhead lighting, intersection lighting or traffic signals, contact the IDOT Traffic Office at 815/284-5469 at least 48 hours prior to work.

Contractor shall take precautions to minimize incidental excavation of earth during tree removals. Any incidental earth removed during tree removal shall remain on site, and be utilized to fill the existing void left by the tree removal.

Per Special Provision for COMPLETION DATE PLUS WORKING DAYS, all trees shall be felled by March 31, 2023.

For the purpose of this tree removal contract 64R70, any proposed ROW/proposed easement shown on these plan sheets should be considered "not yet acquired". No work or tree removal shall take place within the proposed ROW/proposed easement lines shown on these plan sheets.

| | | | | | | | | | | |
|---------------------------|-------------------------------|--------------------------------|-----------|---|----------------------|---------------------------|-----------|-----------|--------------|-----------|
| FILE NAME = 64R70.GN.DOCX | USER NAME = | DESIGNED - Engineering Systems | REVISED - | STATE OF ILLINOIS DEPARTMENT OF TRANSPORTATION | GENERAL NOTES | ROUTE | SECTION | COUNTY | TOTAL SHEETS | SHEET NO. |
| | PLOT SCALE = | DRAWN - | REVISED - | | | FAI 39 | (201-3)TR | Winnebago | 26 | 3 |
| | | CHECKED - | REVISED - | | | CONTRACT NO. 64R70 | | | | |
| | PLOT DATE = 6/24/2022 3:17 PM | DATE - 6/24/2022 3:08 PM | REVISED - | | | SCALE: | SHEET NO. | OF SHEETS | STA. | TO STA. |

MODEL: Default
 FILE NAME: p:\bullet-pw-bentley.com\PW\DOT\Documents\DOT Office\Dir\dir_2\Project\211106\CADD\plan\CAD\Drawings\64R70 - Tree Removal\02_64R70-sh-500.dgn

| CODE NO. | ITEM | UNIT | TOTAL QUANTITY | CONSTR. CODE |
|----------|---|-------|----------------|----------------------|
| | | | | 90% FED 10% STATE |
| | | | | 0031 URBAN |
| 20100110 | TREE REMOVAL (6 TO 15 UNITS DIAMETER) | UNIT | 2,765 | 2,765 |
| 20100210 | TREE REMOVAL (OVER 15 UNITS DIAMETER) | UNIT | 1,886 | 1,886 |
| 20100500 | TREE REMOVAL, ACRES | ACRE | 0.75 | 0.75 |
| 67100100 | MOBILIZATION | L SUM | 1 | 1 |
| 70100450 | TRAFFIC CONTROL AND PROTECTION, STANDARD 701201 | L SUM | 1 | 1 |
| 70100825 | TRAFFIC CONTROL AND PROTECTION, STANDARD 701456 | L SUM | 1 | 1 |

| | | | | | | | | | | | | |
|---------------------------------|------------|-----------|---|-------------------------------------|--|--|--|---------------------------|-----------|--------------------|--------------|-----------|
| USER NAME = Dennis, Otero-Lopez | DESIGNED - | REVISED - | STATE OF ILLINOIS DEPARTMENT OF TRANSPORTATION | SUMMARY OF QUANTITIES | | | | F.A.I. RTE. | SECTION | COUNTY | TOTAL SHEETS | SHEET NO. |
| PLOT SCALE = 100,0000' / in. | DRAWN - | REVISED - | | | | | | 39 | (201-3)TR | WINNEBAGO | 26 | 4 |
| PLOT DATE = 6/28/2022 | CHECKED - | REVISED - | | SCALE: SHEET OF SHEETS STA. TO STA. | | | | ILLINOIS FED. AID PROJECT | | CONTRACT NO. 64R70 | | |
| | DATE - | REVISED - | | | | | | | | | | |

| LOCATION | | | | 20100110 | 20100210 | 20100500 |
|------------|------------|--------|-------|---|---|------------------------|
| | | | | TREE REMOVAL (6 TO 15 UNITS DIAMETER) | TREE REMOVAL (OVER 15 UNITS DIAMETER) | TREE REMOVAL, ACRES |
| ROAD | STATION | OFFSET | LT/RT | UNIT | UNIT | ACRE |
| EX RAMP AD | 47+35.7 | 144.81 | LT | 10 | | |
| EX RAMP AD | 47+38.7 | 248.71 | LT | 10 | | |
| EX RAMP AD | 47+44.4 | 200.91 | LT | 11 | | |
| EX RAMP AD | 47+59.9 | 182.29 | LT | 12 | | |
| EX RAMP AD | 47+71.0 | 235.00 | LT | | | 0.05 |
| EX RAMP AD | 48+54.3 | 183.79 | LT | 14 | | |
| EX RAMP AD | 49+56.1 | 301.01 | LT | 12 | | |
| EX RAMP AD | 49+86.8 | 434.59 | LT | 8 | | |
| EX RAMP AD | 50+02.3 | 439.86 | LT | 11 | | |
| EX RAMP AD | 50+04.4 | 146.96 | LT | | 29 | |
| EX RAMP AD | 50+15.7 | 387.02 | LT | | 17 | |
| EX RAMP AD | 50+22.9 | 305.27 | LT | 8 | | |
| EX RAMP AD | 50+70.8 | 121.91 | LT | 9 | | |
| EX RAMP AD | 52+34.7 | 83.61 | LT | 9 | | |
| EX RAMP AD | 54+23.1 | 396.85 | LT | | 18 | |
| EX US20 | 1154+32.00 | 213.18 | RT | 11 | | |
| EX US20 | 1154+34.37 | 224.69 | RT | 11 | | |
| EX US20 | 1155+15.18 | 213.85 | RT | 13 | | |
| EX US20 | 1155+85.12 | 210.70 | RT | | 21 | |
| EX US20 | 1155+85.7 | 231.53 | RT | | 18 | |
| EX RAMP DA | 2563+74.5 | 334.28 | LT | 13 | | |
| EX RAMP DA | 2567+00.0 | 470.84 | LT | | 21 | |
| EX RAMP DA | 2567+16.1 | 272.98 | LT | 11 | | |
| EX RAMP DA | 2567+32.2 | 460.51 | LT | 7 | | |
| EX RAMP DA | 2604+74.0 | 484.29 | LT | 6 | | |
| EX RAMP DA | 2567+88.6 | 417.60 | LT | | 16 | |
| EX RAMP DA | 2568+65.4 | 352.03 | LT | 12 | | |
| EX RAMP DA | 2573+82.0 | 63.86 | RT | | 25 | |
| EX RAMP DA | 2574+11.2 | 93.99 | RT | 9 | | |
| EX RAMP DA | 2574+14.3 | 89.20 | RT | 9 | | |
| EX RAMP DA | 2574+73.8 | 169.13 | RT | 8 | | |
| EX RAMP DA | 2575+17.6 | 65.65 | RT | 6 | | |
| EX RAMP DA | 2575+28.3 | 78.47 | RT | 8 | | |
| EX RAMP DA | 2575+29.5 | 114.10 | RT | 6 | | |
| EX RAMP DA | 2575+39.1 | 64.05 | RT | 12 | | |
| EX RAMP DA | 2575+49.4 | 114.64 | RT | 7 | | |
| EX RAMP DA | 2575+51.8 | 94.72 | RT | 6 | | |
| EX RAMP DA | 2575+81.6 | 46.14 | RT | 7 | | |
| EX RAMP DA | 2576+01.4 | 85.93 | RT | | 27 | |
| EX RAMP DA | 2576+22.3 | 218.89 | RT | | 19 | |
| EX RAMP DA | 2576+35.6 | 72.79 | RT | 14 | | |
| EX RAMP DA | 2576+42.4 | 255.73 | RT | | 16 | |
| EX RAMP DA | 2576+52.0 | 77.76 | RT | 6 | | |
| EX RAMP DA | 2576+73.9 | 71.61 | RT | 6 | | |
| EX RAMP DA | 2577+62.3 | 200.84 | RT | 14 | | |
| EX RAMP DA | 2577+62.5 | 110.06 | RT | | 18 | |
| EX RAMP DA | 2577+67.4 | 77.01 | RT | | 27 | |
| EX RAMP DA | 2578+10.5 | 91.47 | RT | | 27 | |
| EX RAMP DA | 2578+16.0 | 209.90 | RT | 6 | | |
| EX RAMP DA | 2578+56.2 | 280.37 | RT | | 21 | |
| EX RAMP DA | 2578+68.8 | 284.31 | RT | | 21 | |
| EX RAMP DA | 2579+88.4 | 129.71 | RT | 8 | | |
| SUBTOTAL | | | | 330 | 341 | 0.05 |

MODEL: Default
 FILE: \\nafe-pw-bentley.com\FW\DOT\Documents\DOT_Offices\Dir\dr_2\Project\121106\CADD\Drawn\CAD\Drawings\64R70 - Tree Removal\02_64R70-sh-tree.dwg

| | | |
|----------------------------------|------------|-----------|
| USER NAME = Dennisse,Otero-Lopez | DESIGNED - | REVISED - |
| | DRAWN - | REVISED - |
| PLOT SCALE = 100,0000' / in. | CHECKED - | REVISED - |
| PLOT DATE = 6/28/2022 | DATE - | REVISED - |

**STATE OF ILLINOIS
DEPARTMENT OF TRANSPORTATION**

SCHEDULE OF QUANTITIES

SCALE: SHEET 1 OF 8 SHEETS STA. TO STA.

| F.A.I. RTE. | SECTION | COUNTY | TOTAL SHEETS | SHEET NO. |
|---------------------------|-----------|-----------|--------------|-----------|
| 39 | (201-3)TR | WINNEBAGO | 26 | 5 |
| CONTRACT NO. 64R70 | | | | |
| ILLINOIS FED. AID PROJECT | | | | |

| LOCATION | | | | 20100110 | 20100210 | 20100500 |
|------------|----------|--------|-------|---|---|------------------------|
| | | | | TREE REMOVAL (6 TO 15 UNITS DIAMETER) | TREE REMOVAL (OVER 15 UNITS DIAMETER) | TREE REMOVAL, ACRES |
| ROAD | STATION | OFFSET | LT/RT | UNIT | UNIT | ACRE |
| PR LINDEN | 101+11.6 | 67.4 | RT | 6 | | |
| PR LINDEN | 101+17.5 | 66.4 | RT | 6 | | |
| PR LINDEN | 101+67.6 | 43.8 | RT | 9 | | |
| PR LINDEN | 103+10.8 | 58.2 | RT | 8 | | |
| PR LINDEN | 103+58.9 | 44.2 | LT | 10 | | |
| PR LINDEN | 104+28.2 | 49.6 | LT | 17 | | |
| PR LINDEN | 105+10.4 | 51.4 | LT | 7 | | |
| PR LINDEN | 105+17.8 | 51.6 | RT | 6 | | |
| PR LINDEN | 105+69.8 | 54.1 | RT | 6 | | |
| EX RAMP BD | 32+03.1 | 54.3 | RT | 12 | | |
| EX RAMP BD | 32+03.3 | 54.2 | RT | 14 | | |
| EX RAMP BD | 32+04.6 | 53.7 | RT | 8 | | |
| EX RAMP BD | 32+35.0 | 57.1 | RT | | 16 | |
| EX RAMP BD | 32+46.9 | 50.4 | RT | 7 | | |
| EX RAMP BD | 32+49.5 | 50.3 | RT | | 17 | |
| EX RAMP BD | 32+77.0 | 53.7 | RT | | 27 | |
| EX RAMP BD | 33+41.8 | 56.2 | RT | | 27 | |
| EX RAMP BD | 33+56.7 | 58.1 | RT | | 30 | |
| EX RAMP BD | 33+67.5 | 57.2 | RT | 15 | | |
| EX RAMP BD | 35+58.5 | 48.3 | RT | | 22 | |
| EX RAMP BD | 35+58.9 | 48.5 | RT | | 22 | |
| EX RAMP BD | 35+67.9 | 65.0 | RT | 6 | | |
| EX RAMP BD | 35+69.8 | 61.4 | RT | 7 | | |
| EX RAMP BD | 35+70.9 | 62.2 | RT | 7 | | |
| EX RAMP BD | 35+71.1 | 62.7 | RT | 6 | | |
| EX RAMP BD | 35+96.9 | 37.6 | RT | 7 | | |
| EX RAMP BD | 36+39.9 | 47.6 | RT | | 24 | |
| EX RAMP BD | 36+48.7 | 47.8 | RT | 10 | | |
| EX RAMP BD | 36+69.4 | 42.3 | RT | 15 | | |
| EX RAMP BD | 36+75.2 | 48.1 | RT | 14 | | |
| EX RAMP BD | 37+00.8 | 56.9 | RT | | 36 | |
| EX RAMP BD | 37+24.5 | 50.5 | RT | 6 | | |
| EX RAMP BD | 37+56.5 | 67.0 | RT | | 24 | |
| EX RAMP BD | 37+57.8 | 54.0 | RT | 13 | | |
| EX RAMP BD | 37+78.8 | 77.4 | RT | 14 | | |
| EX RAMP BD | 37+86.2 | 57.2 | RT | | 28 | |
| EX RAMP BD | 38+38.6 | 67.8 | RT | | 22 | |
| EX RAMP BD | 38+44.3 | 65.9 | RT | | 20 | |
| EX RAMP BD | 38+53.1 | 68.5 | RT | | 22 | |
| EX RAMP BD | 38+53.7 | 64.4 | RT | | 18 | |
| EX RAMP BD | 39+01.9 | 79.1 | RT | 15 | | |
| EX RAMP BD | 39+29.2 | 79.0 | RT | | 19 | |
| EX RAMP BD | 40+44.6 | 63.0 | RT | 6 | | |
| EX RAMP BD | 40+71.7 | 90.4 | RT | | 24 | |
| EX RAMP BD | 40+83.8 | 100.3 | RT | 6 | | |
| EX RAMP BD | 40+84.9 | 99.3 | RT | 6 | | |
| EX RAMP BD | 41+18.8 | 61.8 | RT | 12 | | |
| EX RAMP BD | 41+20.7 | 107.4 | RT | | 20 | |
| EX RAMP BD | 42+45.3 | 49.8 | RT | 6 | | |
| EX RAMP BD | 42+74.9 | 91.0 | RT | 12 | | |
| EX RAMP BD | 43+32.1 | 47.3 | RT | 10 | | |
| EX RAMP BD | 43+43.8 | 95.3 | RT | 10 | | |
| EX RAMP BD | 43+69.0 | 55.3 | RT | 12 | | |
| EX RAMP BD | 43+95.8 | 64.1 | RT | | 23 | |
| SUBTOTAL | | | | 331 | 441 | 0 |

MODEL: Default
 FILE: \\blmfc-pw-bentley.com\PW\DOT\Documents\DOT\offices\Dir\dir_2\Project\10211106\CADD\plan\CAD\Freesheet\64R70 - Tree Removal\02_64R70-sh-schedule.dgn

| | | |
|----------------------------------|------------|-----------|
| USER NAME = Dennisse,Otero-Lopez | DESIGNED - | REVISED - |
| | DRAWN - | REVISED - |
| PLOT SCALE = 100,0000' / in. | CHECKED - | REVISED - |
| PLOT DATE = 6/28/2022 | DATE - | REVISED - |

**STATE OF ILLINOIS
DEPARTMENT OF TRANSPORTATION**

SCHEDULE OF QUANTITIES

SCALE: SHEET 3 OF 8 SHEETS STA. TO STA.

| F.A.I. RTE. | SECTION | COUNTY | TOTAL SHEETS | SHEET NO. |
|---------------------------|-----------|-----------|--------------|-----------|
| 39 | (201-3)TR | WINNEBAGO | 26 | 7 |
| CONTRACT NO. 64R70 | | | | |
| ILLINOIS FED. AID PROJECT | | | | |

| LOCATION | | | | 20100110 | 20100210 | 20100500 |
|------------|---------|--------|-------|---|---|------------------------|
| | | | | TREE REMOVAL (6 TO 15 UNITS DIAMETER) | TREE REMOVAL (OVER 15 UNITS DIAMETER) | TREE REMOVAL, ACRES |
| ROAD | STATION | OFFSET | LT/RT | UNIT | UNIT | ACRE |
| EX RAMP BD | 44+09.9 | 55.8 | RT | 8 | | |
| EX RAMP BD | 44+18.0 | 29.2 | RT | 8 | | |
| EX RAMP BD | 44+24.9 | 97.0 | RT | 6 | | |
| EX RAMP BD | 44+26.4 | 43.4 | RT | | 19 | |
| EX RAMP BD | 44+27.4 | 114.1 | RT | | 24 | |
| EX RAMP BD | 44+27.9 | 108.7 | RT | 6 | | |
| EX RAMP BD | 44+28.3 | 114.9 | RT | | 20 | |
| EX RAMP BD | 44+28.7 | 115.4 | RT | 13 | | |
| EX RAMP BD | 44+45.0 | 111.6 | RT | | 18 | |
| EX RAMP BD | 44+47.4 | 62.1 | RT | 15 | | |
| EX RAMP BD | 44+60.2 | 109.6 | RT | 10 | | |
| EX RAMP BD | 44+69.5 | 93.1 | RT | 8 | | |
| EX RAMP BD | 44+88.8 | 105.3 | RT | | 22 | |
| EX RAMP BD | 45+86.5 | 48.5 | RT | 13 | | |
| EX RAMP BD | 45+99.4 | 89.3 | RT | 11 | | |
| EX RAMP BD | 46+01.3 | 112.1 | RT | | 21 | |
| EX RAMP BD | 46+22.5 | 104.7 | RT | 6 | | |
| EX RAMP BD | 46+30.0 | 96.8 | RT | 6 | | |
| EX RAMP BD | 46+51.0 | 69.6 | RT | 15 | | |
| EX RAMP BD | 46+78.4 | 112.1 | RT | | 23 | |
| EX RAMP BD | 47+25.6 | 83.1 | RT | 8 | | |
| EX RAMP BD | 47+29.7 | 79.5 | RT | 13 | | |
| EX RAMP BD | 47+46.8 | 114.9 | RT | | 16 | |
| EX RAMP BD | 47+60.8 | 107.0 | RT | 6 | | |
| EX RAMP BD | 47+76.5 | 117.3 | RT | | 16 | |
| EX RAMP BD | 48+11.9 | 80.2 | RT | 6 | | |
| EX RAMP BD | 48+28.0 | 80.9 | RT | 11 | | |
| EX RAMP BD | 48+38.6 | 116.6 | RT | | 19 | |
| EX RAMP BD | 48+60.6 | 124.1 | RT | | 18 | |
| EX RAMP BD | 48+62.0 | 49.3 | RT | 7 | | |
| EX RAMP BD | 48+64.5 | 110.3 | RT | 12 | | |
| EX RAMP BD | 48+71.3 | 43.5 | RT | 13 | | |
| EX RAMP BD | 49+14.5 | 129.7 | RT | 13 | | |
| EX RAMP BD | 49+32.5 | 123.1 | RT | 7 | | |
| EX RAMP BD | 49+45.1 | 93.5 | RT | | 18 | |
| EX RAMP BD | 49+47.4 | 125.4 | RT | | 21 | |
| EX RAMP BD | 49+66.3 | 133.3 | RT | | 38 | |
| EX RAMP BD | 49+99.2 | 139.5 | RT | 12 | | |
| EX RAMP BD | 49+99.6 | 72.7 | RT | 9 | | |
| EX RAMP BD | 50+05.0 | 49.7 | RT | | 15 | |
| EX RAMP BD | 50+08.6 | 42.3 | RT | 7 | | |
| EX RAMP BD | 50+09.4 | 124.4 | RT | | 20 | |
| EX RAMP BD | 50+11.6 | 118.2 | RT | | 25 | |
| EX RAMP BD | 50+18.3 | 85.2 | RT | 8 | | |
| EX RAMP BD | 50+28.0 | 33.6 | RT | | 20 | |
| EX RAMP BD | 50+29.9 | 84.2 | RT | 8 | | |
| EX RAMP BD | 50+37.9 | 46.1 | RT | 8 | | |
| EX RAMP BD | 50+38.2 | 50.5 | RT | 13 | | |
| EX RAMP BD | 50+40.7 | 82.4 | RT | 14 | | |
| EX RAMP BD | 50+41.3 | 108.6 | RT | 11 | | |
| EX RAMP BD | 50+41.8 | 129.3 | RT | 12 | | |
| EX RAMP BD | 50+43.9 | 87.9 | RT | 8 | | |
| EX RAMP BD | 50+50.1 | 82.9 | RT | 8 | | |
| EX RAMP BD | 50+52.6 | 87.4 | RT | 8 | | |
| SUBTOTAL | | | | 347 | 373 | 0 |

MODEL: Default
 FILE: \\nafe-pw-bentley.com\PIV\DOT\Documents\DOT\offices\Dir\dir_2\Project\121106\CAD\Drawn\CAD\Drawn\64R70 - Tree Removal\02_64R70-sh-schedule.dgn

| | | |
|----------------------------------|------------|-----------|
| USER NAME = Dennisse,Otero-Lopez | DESIGNED - | REVISED - |
| | DRAWN - | REVISED - |
| PLOT SCALE = 100,0000' / in. | CHECKED - | REVISED - |
| PLOT DATE = 6/28/2022 | DATE - | REVISED - |

**STATE OF ILLINOIS
DEPARTMENT OF TRANSPORTATION**

SCHEDULE OF QUANTITIES

SCALE: SHEET 4 OF 8 SHEETS STA. TO STA.

| | | | | |
|-------------|-----------|-----------|--------------------|-----------|
| F.A.I. RTE. | SECTION | COUNTY | TOTAL SHEETS | SHEET NO. |
| 39 | (201-3)TR | WINNEBAGO | 26 | 8 |
| | | | CONTRACT NO. 64R70 | |
| ILLINOIS | | | FED. AID PROJECT | |

| LOCATION | | | | 20100110 | 20100210 | 20100500 |
|------------|---------|--------|-------|---|---|-------------------------|
| | | | | TREE REMOVAL (6 TO 15 UNITS DIAMETER) | TREE REMOVAL (OVER 15 UNITS DIAMETER) | TREE REMOVAL , ACRES |
| ROAD | STATION | OFFSET | LT/RT | UNIT | UNIT | ACRE |
| EX RAMP BD | 50+54.4 | 92.8 | RT | 8 | | |
| EX RAMP BD | 50+56.5 | 78.3 | RT | 6 | | |
| EX RAMP BD | 50+59.5 | 93.8 | RT | 14 | | |
| EX RAMP BD | 50+65.5 | 90.1 | RT | 14 | | |
| EX RAMP BD | 50+68.8 | 95.9 | RT | 9 | | |
| EX RAMP BD | 50+78.5 | 112.5 | RT | 13 | | |
| EX RAMP BD | 50+79.9 | 104.0 | RT | 8 | | |
| EX RAMP BD | 50+88.0 | 97.5 | RT | 12 | | |
| EX RAMP BD | 50+94.9 | 87.8 | RT | | 17 | |
| EX RAMP BD | 55+15.3 | 124.4 | RT | 7 | | |
| EX RAMP BD | 55+18.0 | 127.3 | RT | 8 | | |
| EX RAMP BD | 55+24.4 | 132.0 | RT | 6 | | |
| EX RAMP BD | 55+45.0 | 132.0 | RT | 10 | | |
| EX RAMP BD | 55+52.4 | 132.1 | RT | 10 | | |
| EX RAMP BD | 56+41.4 | 159.9 | RT | 6 | | |
| EX RAMP BD | 56+44.2 | 177.8 | RT | 6 | | |
| EX RAMP BD | 56+47.7 | 183.2 | RT | 8 | | |
| EX RAMP BD | 57+85.3 | 457.0 | RT | 14 | | |
| EX RAMP BD | 58+75.8 | 252.1 | RT | 11 | | |
| EX RAMP BD | 64+51.6 | 237.5 | RT | 9 | | |
| EX RAMP BD | 65+54.9 | 51.2 | RT | 9 | | |
| EX RAMP BD | 66+09.4 | 117.6 | RT | | 22 | |
| EX RAMP BD | 66+16.7 | 180.8 | RT | 10 | | |
| EX RAMP BD | 66+82.9 | 249.8 | RT | | 17 | |
| EX RAMP BD | 68+58.4 | 72.6 | RT | 9 | | |
| EX RAMP BD | 68+79.2 | 79.9 | RT | | 16 | |
| EX RAMP BD | 69+00.2 | 82.2 | RT | 11 | | |
| EX RAMP BD | 69+37.8 | 74.3 | RT | | 18 | |
| EX RAMP BD | 69+52.3 | 40.7 | RT | 7 | | |
| EX RAMP BD | 69+73.5 | 68.5 | RT | | 22 | |
| EX RAMP BD | 69+97.2 | 43.1 | RT | | 17 | |
| EX RAMP BD | 70+87.9 | 46.9 | RT | 12 | | |
| EX RAMP BD | 71+55.7 | 44.0 | RT | 9 | | |
| EX RAMP BD | 72+25.2 | 64.1 | RT | 7 | | |
| EX RAMP BD | 72+90.5 | 29.8 | RT | 12 | | |
| EX RAMP BD | 73+17.2 | 35.3 | RT | 7 | | |
| EX RAMP BD | 78+46.0 | 123.2 | LT | 6 | | |
| EX RAMP BD | 78+48.9 | 190.3 | RT | 9 | | |
| EX RAMP BD | 79+09.5 | 120.1 | LT | 9 | | |
| EX RAMP BD | 81+28.4 | 54.5 | RT | 9 | | |
| EX RAMP BD | 81+41.8 | 144.9 | LT | 6 | | |
| EX RAMP BD | 81+56.6 | 60.3 | RT | 9 | | |
| EX RAMP BD | 81+58.9 | 192.8 | LT | 6 | | |
| EX RAMP BD | 81+69.5 | 43.5 | RT | 7 | | |
| EX RAMP BD | 81+77.7 | 52.5 | RT | 14 | | |
| EX RAMP BD | 82+12.4 | 91.4 | RT | 8 | | |
| EX RAMP BD | 82+22.1 | 86.8 | RT | 9 | | |
| EX RAMP BD | 82+33.0 | 94.9 | RT | 9 | | |
| EX RAMP BD | 82+56.8 | 43.5 | RT | 6 | | |
| EX RAMP BD | 82+57.6 | 91.1 | RT | 6 | | |
| EX RAMP BD | 82+68.1 | 90.2 | RT | 6 | | |
| EX RAMP BD | 82+69.5 | 48.8 | RT | 9 | | |
| EX RAMP BD | 82+73.1 | 58.0 | RT | 13 | | |
| EX RAMP BD | 82+77.1 | 122.7 | RT | 9 | | |
| SUBTOTAL | | | | 422 | 129 | 0 |

MODEL: Default
 FILE NAME: p:\projects\p11106\CAD\Drawn\CAD\Freesheet64R70 - Tree Removal\02_64R70-sh-schedule.dgn

| | | | |
|--------------|----------------------|------------|-----------|
| USER NAME = | Dennisse,Otero-Lopez | DESIGNED - | REVISED - |
| DRAWN - | | REVISOR - | |
| PLOT SCALE = | 100,0000' / in. | CHECKED - | REVISED - |
| PLOT DATE = | 6/28/2022 | DATE - | REVISED - |

**STATE OF ILLINOIS
DEPARTMENT OF TRANSPORTATION**

SCHEDULE OF QUANTITIES

SCALE: SHEET 5 OF 8 SHEETS STA. TO STA.

| F.A.I. RTE. | SECTION | COUNTY | TOTAL SHEETS | SHEET NO. |
|---------------------------|-----------|-----------|--------------|-----------|
| 39 | (201-3)TR | WINNEBAGO | 26 | 9 |
| CONTRACT NO. 64R70 | | | | |
| ILLINOIS FED. AID PROJECT | | | | |

| LOCATION | | | | 20100110 | 20100210 | 20100500 |
|------------|-----------|--------|-------|---|---|------------------------|
| | | | | TREE REMOVAL (6 TO 15 UNITS DIAMETER) | TREE REMOVAL (OVER 15 UNITS DIAMETER) | TREE REMOVAL, ACRES |
| ROAD | STATION | OFFSET | LT/RT | UNIT | UNIT | ACRE |
| EX RAMP BD | 82+94.6 | 51.6 | RT | | 22 | |
| EX RAMP BD | 82+95.1 | 90.5 | RT | 9 | | |
| EX RAMP BD | 84+42.7 | 54.4 | LT | 6 | | |
| EX RAMP BD | 84+47.7 | 54.5 | LT | 6 | | |
| EX RAMP BD | 86+68.8 | 204.3 | LT | 6 | | |
| EX RAMP BD | 86+95.7 | 109.4 | LT | 12 | | |
| EX RAMP BD | 87+05.3 | 127.5 | LT | 10 | | |
| EX RAMP BD | 87+34.2 | 152.9 | LT | 6 | | |
| EX RAMP BD | 87+84.1 | 64.1 | LT | 12 | | |
| EX RAMP BD | 88+02.6 | 92.1 | LT | 6 | | |
| EX RAMP BD | 88+05.2 | 93.9 | LT | 6 | | |
| EX RAMP DA | 2553+72.4 | 183.9 | LT | 7 | | |
| EX RAMP DA | 2553+94.8 | 468.9 | LT | 8 | | |
| EX RAMP DA | 2554+19.0 | 279.0 | LT | | 26 | |
| EX RAMP DA | 2554+19.3 | 278.4 | LT | 15 | | |
| EX RAMP DA | 2554+19.3 | 280.9 | LT | 12 | | |
| EX RAMP DA | 2554+37.8 | 398.9 | LT | 10 | | |
| EX RAMP DA | 2554+38.5 | 513.8 | LT | 8 | | |
| EX RAMP DA | 2554+44.1 | 543.3 | LT | 6 | | |
| EX RAMP DA | 2554+59.7 | 218.2 | LT | 10 | | |
| EX RAMP DA | 2554+82.7 | 565.4 | LT | 6 | | |
| EX RAMP DA | 2554+84.6 | 471.8 | LT | 12 | | |
| EX RAMP DA | 2555+07.9 | 152.6 | LT | 12 | | |
| EX RAMP DA | 2555+30.4 | 574.9 | LT | 8 | | |
| EX RAMP DA | 2555+42.5 | 500.5 | LT | 8 | | |
| EX RAMP DA | 2555+57.6 | 492.3 | LT | 6 | | |
| EX RAMP DA | 2556+13.7 | 320.6 | LT | | 24 | |
| EX RAMP DA | 2556+21.0 | 477.5 | LT | 6 | | |
| EX RAMP DA | 2556+22.7 | 476.2 | LT | 6 | | |
| EX RAMP DA | 2556+37.0 | 272.7 | LT | | 24 | |
| EX RAMP DA | 2556+41.1 | 547.3 | LT | | 18 | |
| EX RAMP DA | 2557+00.2 | 537.4 | LT | 7 | | |
| EX RAMP DA | 2557+10.6 | 483.0 | LT | 7 | | |
| EX RAMP DA | 2557+11.5 | 533.9 | LT | 7 | | |
| EX RAMP DA | 2557+24.2 | 526.9 | LT | 6 | | |
| EX RAMP DA | 2557+77.5 | 207.5 | LT | | 18 | |
| EX RAMP DB | 16+78.6 | 56.2 | RT | 3 | | |
| EX RAMP DB | 17+04.5 | 60.6 | RT | 8 | | |
| EX RAMP DB | 17+21.0 | 52.4 | RT | 6 | | |
| EX RAMP DB | 17+45.9 | 48.7 | RT | 10 | | |
| EX RAMP DB | 17+84.9 | 55.7 | RT | 7 | | |
| EX RAMP DB | 18+09.1 | 50.1 | RT | 9 | | |
| EX RAMP DB | 19+21.7 | 36.7 | RT | 6 | | |
| EX RAMP DB | 23+94.9 | 36.8 | RT | 7 | | |
| EX RAMP DB | 25+43.4 | 37.5 | RT | 10 | | |
| EX RAMP DB | 25+81.5 | 32.0 | RT | 8 | | |
| EX RAMP DB | 26+08.0 | 36.2 | RT | 6 | | |
| EX RAMP DB | 26+54.3 | 189.8 | LT | 6 | | |
| EX RAMP DB | 26+81.1 | 69.2 | RT | 8 | | |
| EX RAMP DB | 27+05.2 | 214.5 | LT | 6 | | |
| EX RAMP DB | 28+18.0 | 194.7 | LT | 6 | | |
| EX RAMP DB | 28+57.4 | 183.9 | LT | 6 | | |
| EX RAMP DB | 29+78.4 | 208.5 | LT | 6 | | |
| EX RAMP DB | 30+22.0 | 199.3 | LT | 6 | | |
| SUBTOTAL | | | | 370 | 132 | 0 |

MODEL: Default
 FILE: \\nafe-pw-bentley.com\FW\DOT\Documents\DOT\Office\Dir\dir_2\Project\1211106\CADD\Drawn\CAD\Drawings\64R70 - Tree Removal\02_64R70-sh-quantity.dgn

| | | | |
|--------------|----------------------|-------------|-----------|
| USER NAME = | Dennisse,Otero-Lopez | DESIGNED - | REVISED - |
| DRAWN - | | REVISIONS - | |
| PLOT SCALE = | 100,0000' / in. | CHECKED - | REVISED - |
| PLOT DATE = | 6/28/2022 | DATE - | REVISED - |

**STATE OF ILLINOIS
DEPARTMENT OF TRANSPORTATION**

SCHEDULE OF QUANTITIES

SCALE: SHEET 6 OF 8 SHEETS STA. TO STA.

| F.A.I. RTE. | SECTION | COUNTY | TOTAL SHEETS | SHEET NO. |
|---------------------------|-----------|-----------|--------------------|-----------|
| 39 | (201-3)TR | WINNEBAGO | 26 | 10 |
| | | | CONTRACT NO. 64R70 | |
| ILLINOIS FED. AID PROJECT | | | | |

MODEL: Default
 FILE NAME: p:\bullet-pw-bentley.com\p\w\dot\Documents\DOT Office\Dir\dir_2\Project\121106\CAD\Drawn\CAD\Drawn\64470 - Tree Removal\121106\CAD\Drawn\CAD\Drawn\64470 - Tree Removal.dgn

| LOCATION | | | | 20100110 | 20100210 | 20100500 |
|------------|---------|--------|-------|---|---|------------------------|
| | | | | TREE REMOVAL (6 TO 15 UNITS DIAMETER) | TREE REMOVAL (OVER 15 UNITS DIAMETER) | TREE REMOVAL, ACRES |
| ROAD | STATION | OFFSET | LT/RT | UNIT | UNIT | ACRE |
| EX RAMP DB | 32+96.8 | 61.2 | RT | 6 | | |
| EX RAMP DB | 33+14.8 | 140.1 | LT | 6 | | |
| EX RAMP DB | 33+94.7 | 123.0 | LT | 6 | | |
| EX RAMP DB | 34+77.8 | 51.1 | RT | 12 | | |
| EX RAMP DB | 36+29.6 | 35.8 | RT | 8 | | |
| EX RAMP DB | 40+66.5 | 45.2 | RT | 6 | | |
| EX RAMP DB | 42+19.8 | 29.8 | RT | 6 | | |
| EX RAMP DB | 43+93.4 | 28.9 | RT | 8 | | |
| EX RAMP DB | 44+77.5 | 40.1 | RT | 8 | | |
| EX RAMP DB | 45+85.9 | 40.2 | RT | 6 | | |
| EX RAMP DB | 46+25.7 | 44.4 | RT | 8 | | |
| EX RAMP DB | 46+80.2 | 32.4 | RT | 6 | | |
| EX RAMP DB | 47+18.5 | 35.5 | RT | 9 | | |
| EX RAMP DB | 51+90.5 | 30.1 | RT | 9 | | |
| EX RAMP DB | 52+33.5 | 29.6 | RT | 10 | | |
| EX RAMP DB | 60+07.2 | 63.7 | LT | 6 | | |
| EX RAMP DB | 60+10.3 | 61.7 | LT | 9 | | |
| EX RAMP DB | 60+21.4 | 62.5 | LT | 12 | | |
| EX RAMP DB | 60+61.5 | 126.8 | LT | | 32 | |
| EX RAMP DB | 62+34.5 | 47.4 | RT | | 17 | |
| EX RAMP DB | 62+79.8 | 47.6 | RT | 10 | | |
| EX RAMP DB | 62+99.9 | 47.4 | RT | | 20 | |
| EX RAMP DB | 74+70.5 | 67.7 | RT | 9 | | |
| EX RAMP DB | 74+87.3 | 53.9 | RT | 12 | | |
| EX RAMP AD | 64+65.4 | 223.3 | LT | 7 | | |
| EX RAMP AD | 64+80.0 | 239.4 | LT | 8 | | |
| EX RAMP AD | 64+94.7 | 204.2 | LT | 7 | | |
| EX RAMP AD | 65+01.1 | 208.3 | LT | 7 | | |
| EX RAMP AD | 65+11.1 | 176.0 | LT | 7 | | |
| EX RAMP AD | 65+22.2 | 166.9 | LT | 6 | | |
| EX RAMP AD | 65+28.3 | 200.8 | LT | 6 | | |
| EX RAMP AD | 65+34.1 | 209.1 | LT | 8 | | |
| EX RAMP AD | 65+40.5 | 166.3 | LT | 6 | | |
| EX RAMP AD | 65+66.2 | 177.0 | LT | 8 | | |
| EX RAMP AD | 65+74.3 | 264.9 | LT | 12 | | |
| EX RAMP AD | 65+77.5 | 120.7 | LT | 8 | | |
| EX RAMP AD | 65+86.3 | 162.4 | LT | 6 | | |
| EX RAMP AD | 65+88.3 | 167.0 | LT | 6 | | |
| EX RAMP AD | 65+92.1 | 168.3 | LT | 7 | | |
| EX RAMP AD | 66+03.8 | 166.8 | LT | 6 | | |
| EX RAMP AD | 66+26.1 | 243.3 | LT | 10 | | |
| EX RAMP AD | 66+28.6 | 67.2 | LT | 10 | | |
| EX RAMP AD | 66+33.5 | 269.7 | LT | 13 | | |
| EX RAMP AD | 66+50.5 | 173.0 | LT | 6 | | |
| EX RAMP AD | 66+68.0 | 64.3 | LT | 10 | | |
| EX RAMP AD | 66+78.0 | 195.6 | LT | 7 | | |
| EX RAMP AD | 66+86.5 | 166.2 | LT | 7 | | |
| EX RAMP AD | 66+90.4 | 74.9 | LT | 10 | | |
| EX RAMP AD | 66+97.2 | 190.0 | LT | 6 | | |
| EX RAMP AD | 67+08.8 | 210.2 | LT | 6 | | |
| EX RAMP AD | 67+10.9 | 211.1 | LT | 9 | | |
| EX RAMP AD | 67+17.6 | 205.8 | LT | 8 | | |
| EX RAMP AD | 67+25.7 | 209.9 | LT | 8 | | |
| EX RAMP AD | 67+31.2 | 237.4 | LT | 7 | | |
| SUBTOTAL | | | | 404 | 69 | 0 |

| | | | |
|--------------|----------------------|-------------|-----------|
| USER NAME = | Dennisse,Otero-Lopez | DESIGNED - | REVISED - |
| DRAWN - | | REVISIONS - | |
| PLOT SCALE = | 100,0000' / in. | CHECKED - | REVISED - |
| PLOT DATE = | 6/28/2022 | DATE - | REVISED - |

**STATE OF ILLINOIS
DEPARTMENT OF TRANSPORTATION**

SCHEDULE OF QUANTITIES

SCALE: SHEET 7 OF 8 SHEETS STA. TO STA.

| | | | | |
|-------------|-----------|---------------------------|--------------------|-----------|
| F.A.I. RTE. | SECTION | COUNTY | TOTAL SHEETS | SHEET NO. |
| 39 | (201-3)TR | WINNEBAGO | 26 | 11 |
| | | | CONTRACT NO. 64R70 | |
| | | ILLINOIS FED. AID PROJECT | | |

MODEL: D:\default...
 FILE NAME: ...
 PROJECT: ...
 USER: ...
 DATE: ...

| LOCATION | | | | 20100110 | 20100210 | 20100500 |
|------------|-----------|--------|-------|---|---|------------------------|
| | | | | TREE REMOVAL (6 TO 15 UNITS DIAMETER) | TREE REMOVAL (OVER 15 UNITS DIAMETER) | TREE REMOVAL, ACRES |
| ROAD | STATION | OFFSET | LT/RT | UNIT | UNIT | ACRE |
| EX RAMP AD | 67+44.1 | 204.3 | LT | 6 | | |
| EX RAMP AD | 67+57.8 | 169.5 | LT | 6 | | |
| EX RAMP AD | 67+61.0 | 218.3 | LT | 7 | | |
| EX RAMP AD | 67+70.1 | 214.2 | LT | 6 | | |
| EX RAMP AD | 67+71.5 | 230.8 | LT | 9 | | |
| EX RAMP AD | 67+89.6 | 172.6 | LT | 6 | | |
| EX RAMP AD | 67+91.6 | 165.9 | LT | 7 | | |
| EX RAMP AD | 68+01.2 | 194.1 | LT | 9 | | |
| EX RAMP AD | 68+18.6 | 229.1 | LT | 8 | | |
| EX RAMP AD | 68+27.1 | 210.2 | LT | 9 | | |
| EX RAMP AD | 68+28.4 | 196.4 | LT | 7 | | |
| EX RAMP AD | 68+28.9 | 223.1 | LT | 7 | | |
| EX RAMP AD | 68+35.1 | 166.4 | LT | 6 | | |
| EX RAMP AD | 68+37.4 | 162.0 | LT | 9 | | |
| EX RAMP AD | 68+37.6 | 147.2 | LT | 6 | | |
| EX RAMP AD | 68+39.9 | 148.3 | LT | 6 | | |
| EX RAMP AD | 68+41.2 | 173.7 | LT | 8 | | |
| EX RAMP AD | 68+42.0 | 125.1 | LT | 11 | | |
| EX RAMP AD | 68+49.1 | 83.0 | LT | 8 | | |
| EX RAMP AD | 68+81.6 | 91.2 | LT | 6 | | |
| EX RAMP AD | 68+88.3 | 83.6 | LT | 6 | | |
| EX RAMP AD | 68+90.4 | 47.1 | LT | 8 | | |
| EX RAMP AD | 68+96.8 | 54.8 | LT | 7 | | |
| EX RAMP AD | 68+97.4 | 54.1 | LT | 12 | | |
| EX RAMP AD | 69+20.3 | 50.4 | LT | 8 | | |
| EX RAMP AD | 69+32.0 | 59.7 | LT | 10 | | |
| EX RAMP AD | 69+46.3 | 49.1 | LT | 9 | | |
| EX RAMP AD | 69+47.7 | 53.2 | LT | 6 | | |
| EX RAMP AD | 69+62.1 | 50.2 | LT | 8 | | |
| EX RAMP AD | 69+62.6 | 102.4 | LT | 9 | | |
| EX RAMP AD | 69+75.5 | 48.9 | LT | 8 | | |
| EX RAMP AD | 99+93.0 | 45.7 | RT | 8 | | |
| MULFORD RD | 47+40.0 | 51.3 | LT | 15 | | |
| EX RAMP DA | 2569+74.6 | 91.3 | RT | 8 | | |
| EX RAMP DA | 2569+79.9 | 131.6 | RT | 8 | | |
| EX RAMP DA | 2570+02.0 | 172.1 | RT | 7 | | |
| EX RAMP DA | 2570+10.0 | 179.4 | RT | 14 | | |
| SUBTOTAL | | | | 298 | 0 | 0 |
| TOTAL | | | | 2,765 | 1,886 | 0.75 |

| | | | |
|--------------|----------------------|-------------|-----------|
| USER NAME = | Dennisse,Otero-Lopez | DESIGNED - | REVISED - |
| DRAWN - | | REVISIONS - | |
| PLOT SCALE = | 100,0000' / in. | CHECKED - | REVISED - |
| PLOT DATE = | 6/28/2022 | DATE - | REVISED - |

STATE OF ILLINOIS
DEPARTMENT OF TRANSPORTATION

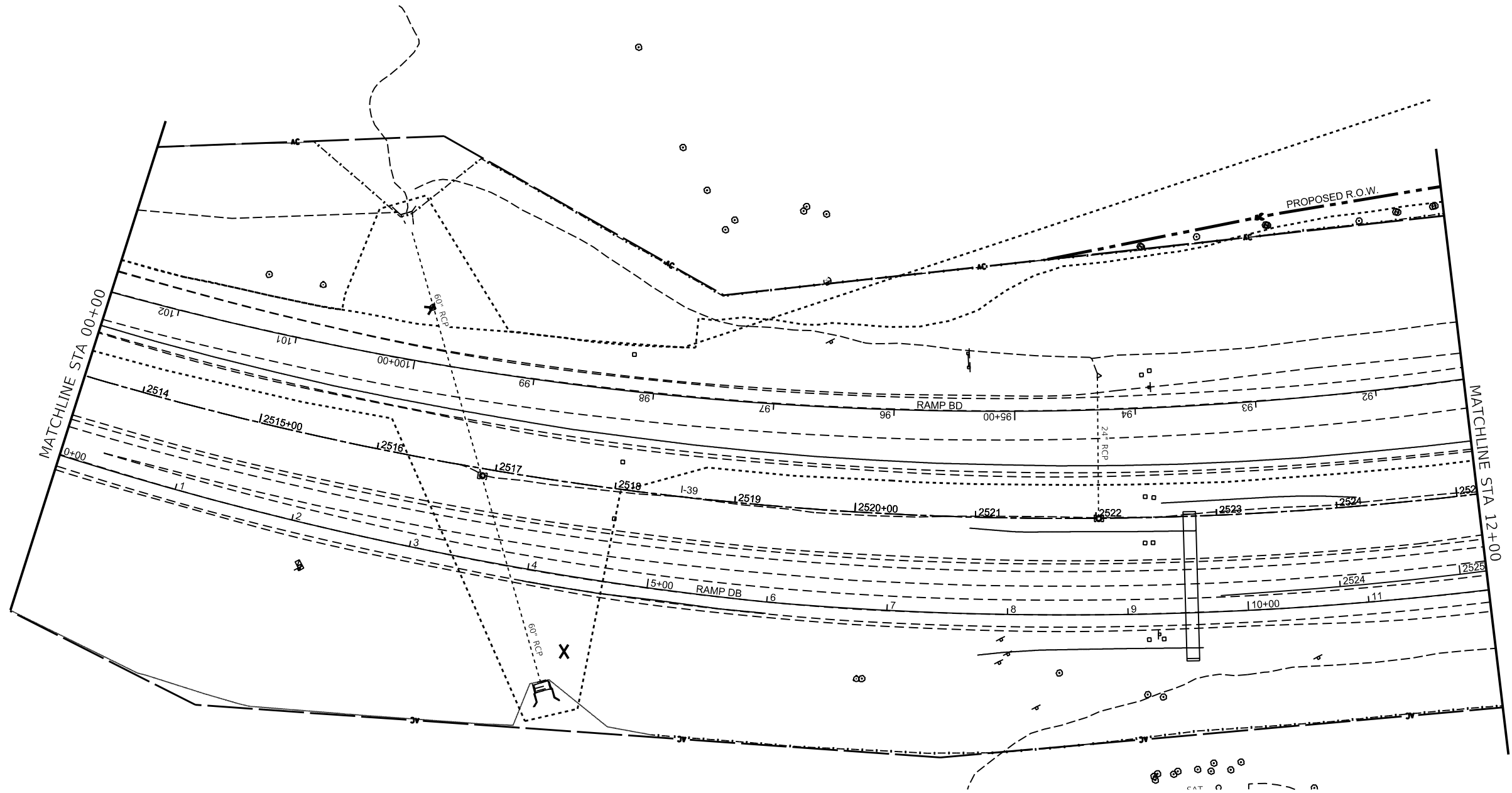
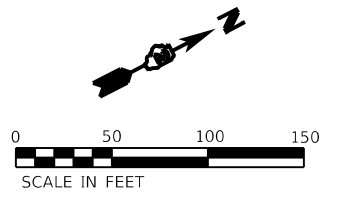
| SCHEDULE OF QUANTITIES | | | |
|------------------------|---------|---------|--------|
| SCALE: | SHEET 8 | OF 8 | SHEETS |
| STA. | | TO STA. | |

| | | | | |
|---------------------------|-----------|-----------|--------------------|-----------|
| F.A.I. RTE. | SECTION | COUNTY | TOTAL SHEETS | SHEET NO. |
| 39 | (201-3)TR | WINNEBAGO | 26 | 12 |
| | | | CONTRACT NO. 64R70 | |
| ILLINOIS FED. AID PROJECT | | | | |

REMOVAL LEGEND

 TREE REMOVAL (ACRE)

 TREE REMOVAL



NOTE: FOR THE PURPOSE OF THIS TREE REMOVAL CONTRACT 64R70, THIS PROPOSED ROW/ PROPOSED EASEMENT SHOULD BE CONSIDERED "NOT YET ACQUIRED". NO WORK OR TREE REMOVAL SHALL TAKE PLACE WITHIN THE PROPOSED ROW/ PROPOSED EASEMENT LINES SHOWN ON THESE PLAN SHEETS.

MODEL: Ramp_BD_DB_Removal.dwg (Sheet 1)
 FILE: \\ms01-02-22\winnetka\p01\6470\Drawings\DOT_Offices\Barton_2\Projects\6470_S\1\TreeRemoval.dwg

| | | |
|-------------------------------------|------------|-----------|
| USER NAME = Robert.Barton | DESIGNED - | REVISED - |
| | DRAWN - | REVISED - |
| PLOT SCALE = 0.166667' / in. | CHECKED - | REVISED - |
| PLOT DATE = Jun-28-2022 02:05:10 PM | DATE - | REVISED - |



**STATE OF ILLINOIS
DEPARTMENT OF TRANSPORTATION**

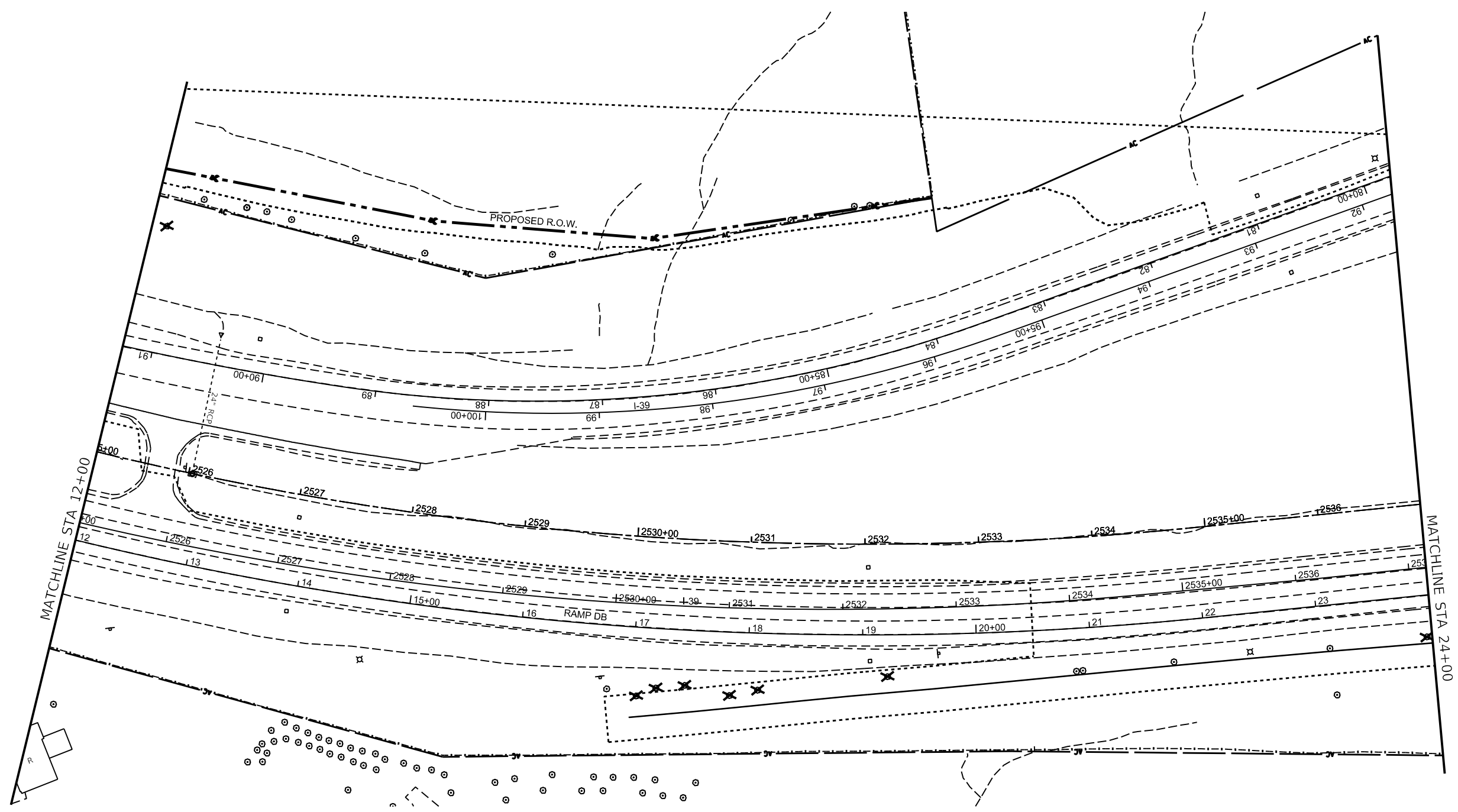
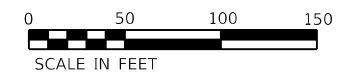
EXISTING ROADWAY AND REMOVAL PLAN

SCALE: 1"=50' SHEET 2 OF 14 SHEETS STA. 00+00 TO STA. 12+00

| F.A.I. RTE. | SECTION | COUNTY | TOTAL SHEETS | SHEET NO. |
|---------------------------|-----------|-----------|--------------|-----------|
| 39 | (201-3)TR | WINNEBAGO | 26 | 14 |
| CONTRACT NO. 64R70 | | | | |
| ILLINOIS FED. AID PROJECT | | | | |

REMOVAL LEGEND

-  TREE REMOVAL (ACRE)
-  TREE REMOVAL



NOTE: FOR THE PURPOSE OF THIS TREE REMOVAL CONTRACT 64R70, THIS PROPOSED ROW/ PROPOSED EASEMENT SHOULD BE CONSIDERED "NOT YET ACQUIRED". NO WORK OR TREE REMOVAL SHALL TAKE PLACE WITHIN THE PROPOSED ROW/ PROPOSED EASEMENT LINES SHOWN ON THESE PLAN SHEETS.

MODEL: Ramp_DB_Removal.dwg
 USER: Robert.Barton
 PROJECT: 64R70 - Tree Removal
 DATE: Jun-28-2022 02:06:30 PM

| | | |
|-------------------------------------|-----------------------------|------------|
| USER NAME = Robert.Barton | DESIGNED - | REVISED - |
| PLOT SCALE = 0.166667' / in. | DRAWN - | REVISED - |
| PLOT DATE = Jun-28-2022 02:06:30 PM | CHECKED - | REVISED - |
| | DATE - Jun-28-2022 02:06:30 | PREVISED - |

**STATE OF ILLINOIS
DEPARTMENT OF TRANSPORTATION**

EXISTING ROADWAY AND REMOVAL PLAN

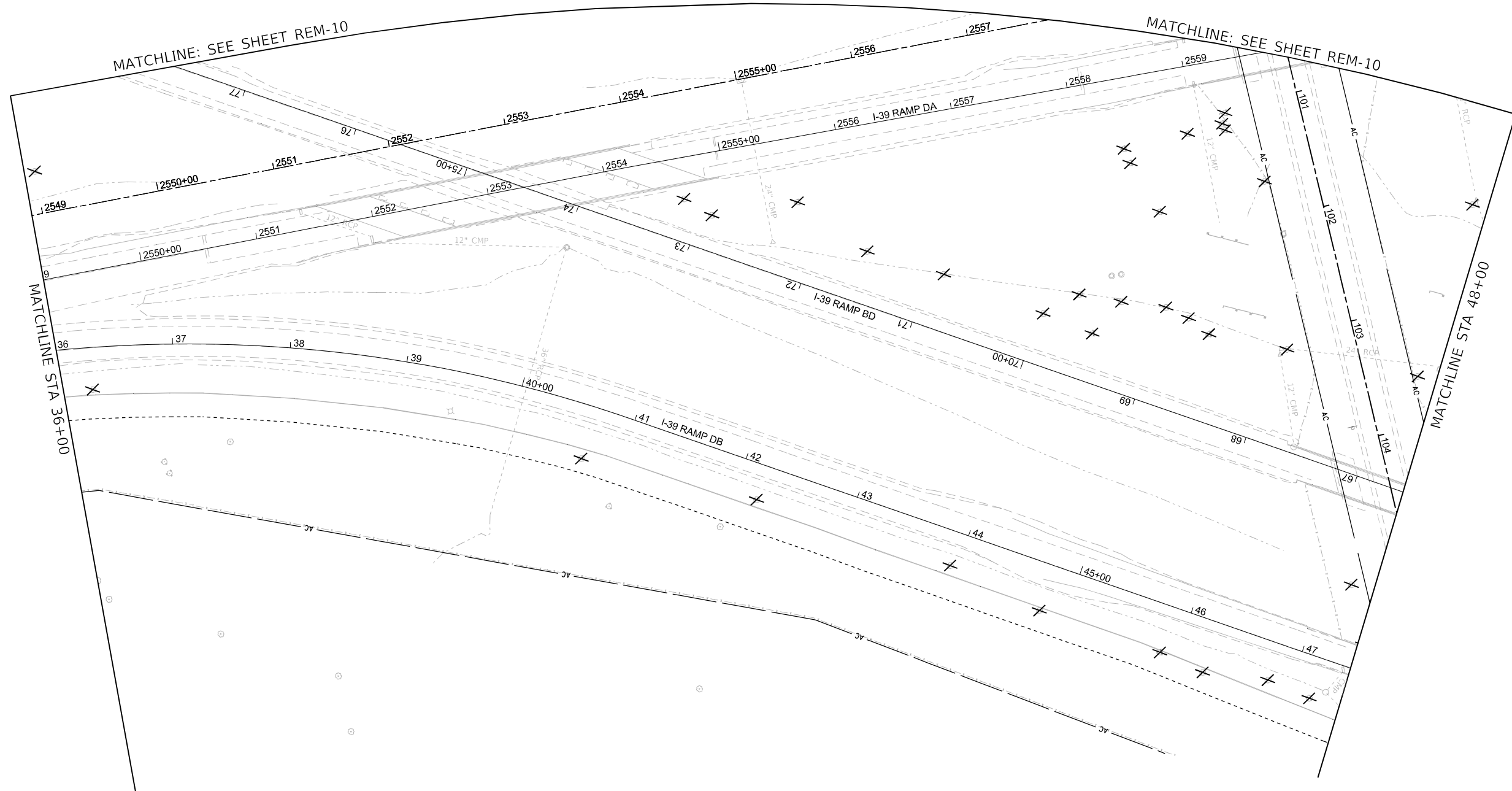
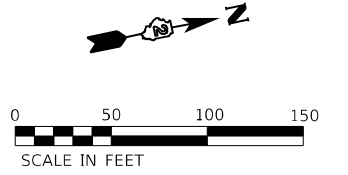
SCALE: 1"=50' SHEET 3 OF 14 SHEETS STA. 12+00 TO STA. 24+00

| F.A.I. RTE. | SECTION | COUNTY | TOTAL SHEETS | SHEET NO. |
|---------------------------|-----------|-----------|--------------|-----------|
| 39 | (201-3)TR | WINNEBAGO | 26 | 15 |
| CONTRACT NO. 64R70 | | | | |
| ILLINOIS FED. AID PROJECT | | | | |

REMOVAL LEGEND

 TREE REMOVAL (ACRE)

 TREE REMOVAL



NOTE: FOR THE PURPOSE OF THIS TREE REMOVAL CONTRACT 64R70, THIS PROPOSED ROW/ PROPOSED EASEMENT SHOULD BE CONSIDERED "NOT YET ACQUIRED". NO WORK OR TREE REMOVAL SHALL TAKE PLACE WITHIN THE PROPOSED ROW/ PROPOSED EASEMENT LINES SHOWN ON THESE PLAN SHEETS.

MODEL: Ramp BD_09 Removal.dwg (Sheet)
 FILE NAME: p:\Illinois\64R70\64R70\DOT\Documents\DOT\64R70\64R70\Tree Removal\DOT_64R70_Sht_TreeRemoval.dwg

| | | | |
|--------------|----------------------|------------|------------|
| USER NAME = | Dennisse Otero-Lopez | DESIGNED - | REVISOR - |
| DRAWN - | | CHECKED - | REVISION - |
| PLOT SCALE = | 0.166667' / in. | DATE - | |
| PLOT DATE = | 6/28/2022 | | |

**STATE OF ILLINOIS
DEPARTMENT OF TRANSPORTATION**

EXISTING ROADWAY AND REMOVAL PLAN

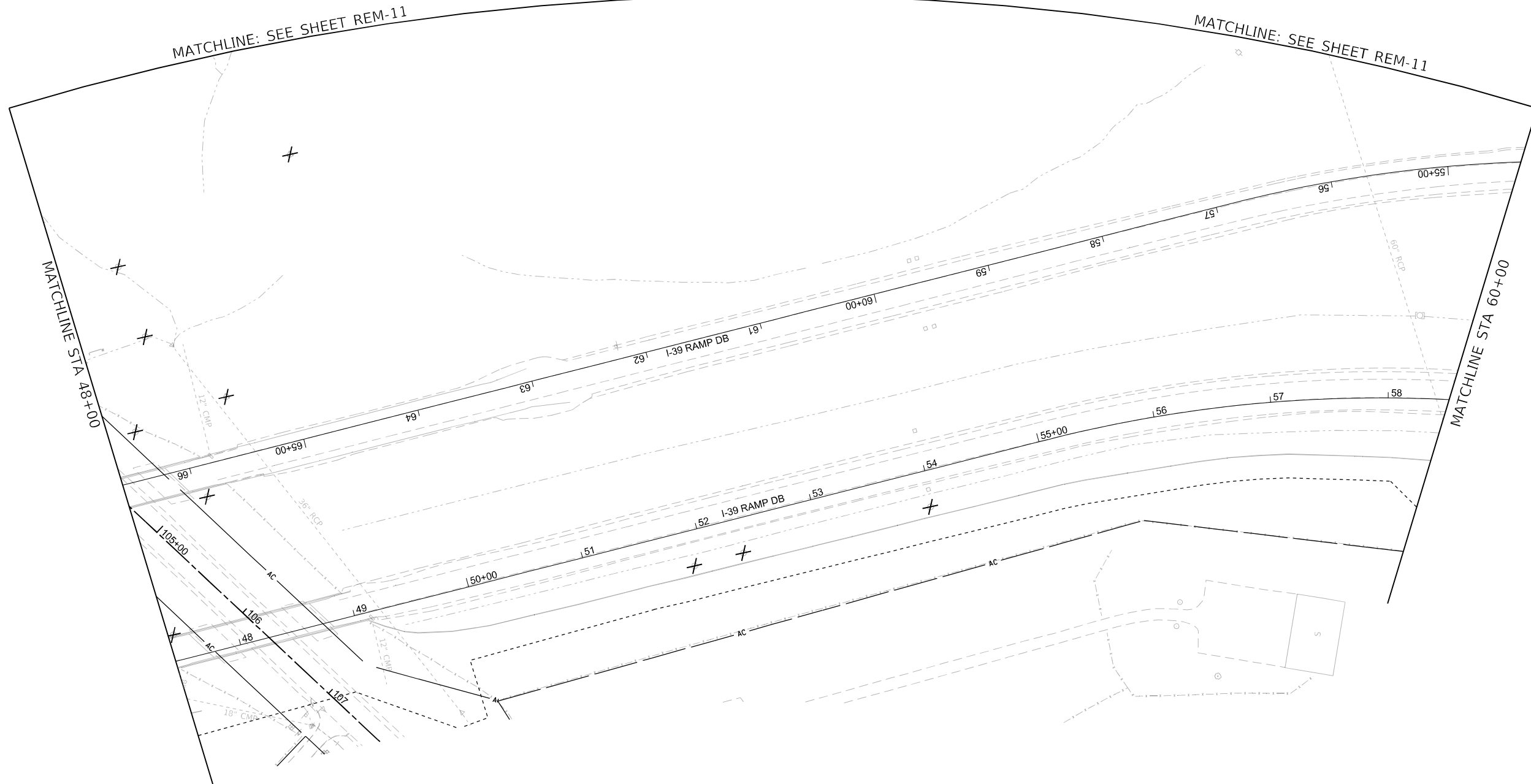
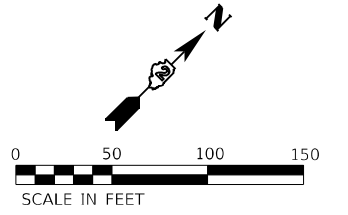
SCALE: 1"=50' SHEET 5 OF 14 SHEETS STA. 36+00 TO STA. 48+00

| F.A.I. RTE. | SECTION | COUNTY | TOTAL SHEETS | SHEET NO. |
|---------------------------|-----------|-----------|--------------------|-----------|
| 39 | (201-3)TR | WINNEBAGO | 26 | 17 |
| | | | CONTRACT NO. 64R70 | |
| ILLINOIS FED. AID PROJECT | | | | |

REMOVAL LEGEND

 TREE REMOVAL (ACRE)

 TREE REMOVAL



NOTE: FOR THE PURPOSE OF THIS TREE REMOVAL CONTRACT 64R70, THIS PROPOSED ROW/ PROPOSED EASEMENT SHOULD BE CONSIDERED "NOT YET ACQUIRED". NO WORK OR TREE REMOVAL SHALL TAKE PLACE WITHIN THE PROPOSED ROW/ PROPOSED EASEMENT LINES SHOWN ON THESE PLAN SHEETS.

MODEL: Remo_BD_09_Removal_06 (Sheet)
 FILE NAME: P:\Public\64R70\64R70\DOT\Documents\DOT\Office\District_2\Project\10211106\CADD\DWG\CADD\Removal_06_64R70_Sht_TreeRemoval.dwg

| | | | |
|--------------|----------------------|------------|----------|
| USER NAME = | Dennisse,Otero-Lopez | DESIGNED - | REVISD - |
| DRAWN - | | REVISD - | |
| PLOT SCALE = | 0.166667' / in. | CHECKED - | REVISD - |
| PLOT DATE = | 6/28/2022 | DATE - | REVISD - |

**STATE OF ILLINOIS
DEPARTMENT OF TRANSPORTATION**

EXISTING ROADWAY AND REMOVAL PLAN

SCALE: 1"=50' SHEET 6 OF 14 SHEETS STA. 48+00 TO STA. 60+00

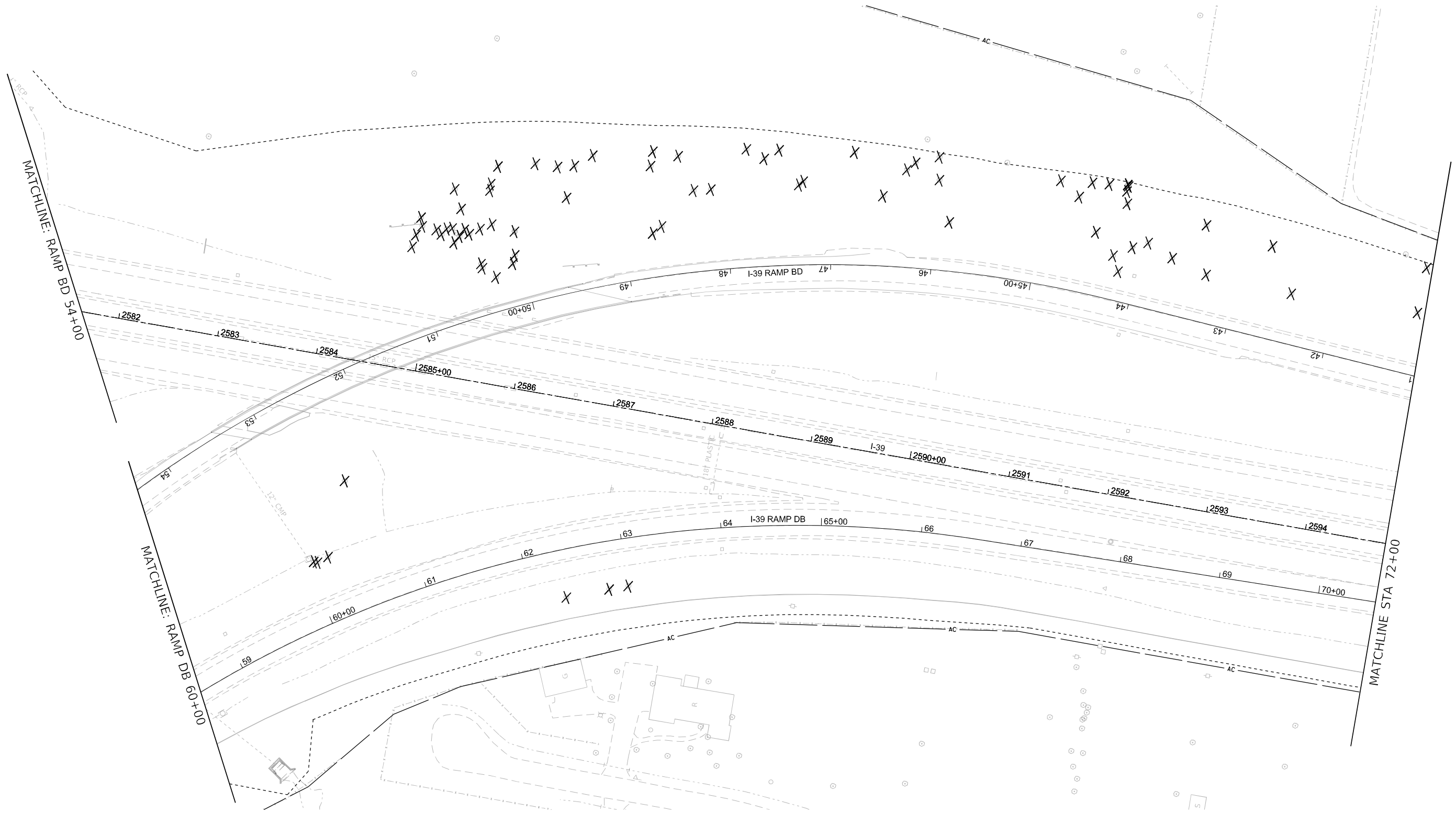
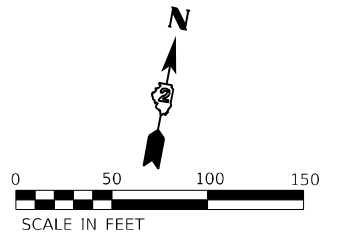
| F.A.I. RTE. | SECTION | COUNTY | TOTAL SHEETS | SHEET NO. |
|---------------------------|-----------|-----------|--------------------|-----------|
| 39 | (201-3)TR | WINNEBAGO | 26 | 18 |
| ILLINOIS FED. AID PROJECT | | | CONTRACT NO. 64R70 | |

REMOVAL LEGEND

 TREE REMOVAL (ACRE)

 TREE REMOVAL

NOTE: FOR THE PURPOSE OF THIS TREE REMOVAL CONTRACT 64R70, THIS PROPOSED ROW/ PROPOSED EASEMENT SHOULD BE CONSIDERED "NOT YET ACQUIRED". NO WORK OR TREE REMOVAL SHALL TAKE PLACE WITHIN THE PROPOSED ROW/ PROPOSED EASEMENT LINES SHOWN ON THESE PLAN SHEETS.



MODEL: Ramp BD DB Removal.dwg (Sheet)
 FILE NAME: p:\pub\cadd\p1106\CADD\p1106\Documents\DOT Office\District 2\Project\1106\CADD\p1106\Drawings\64R70 - Tree Removal\1106_64R70_Sht_TreeRemoval.dwg

| | | | | | |
|--------------|----------------------|------------|--|-----------|--|
| USER NAME = | Dennisse Otero-Lopez | DESIGNED - | | REVISED - | |
| DRAWN - | | CHECKED - | | REVISED - | |
| PLOT SCALE = | 0.166667' / in. | DATE - | | REVISED - | |
| PLOT DATE = | 6/28/2022 | | | | |

**STATE OF ILLINOIS
DEPARTMENT OF TRANSPORTATION**

EXISTING ROADWAY AND REMOVAL PLAN

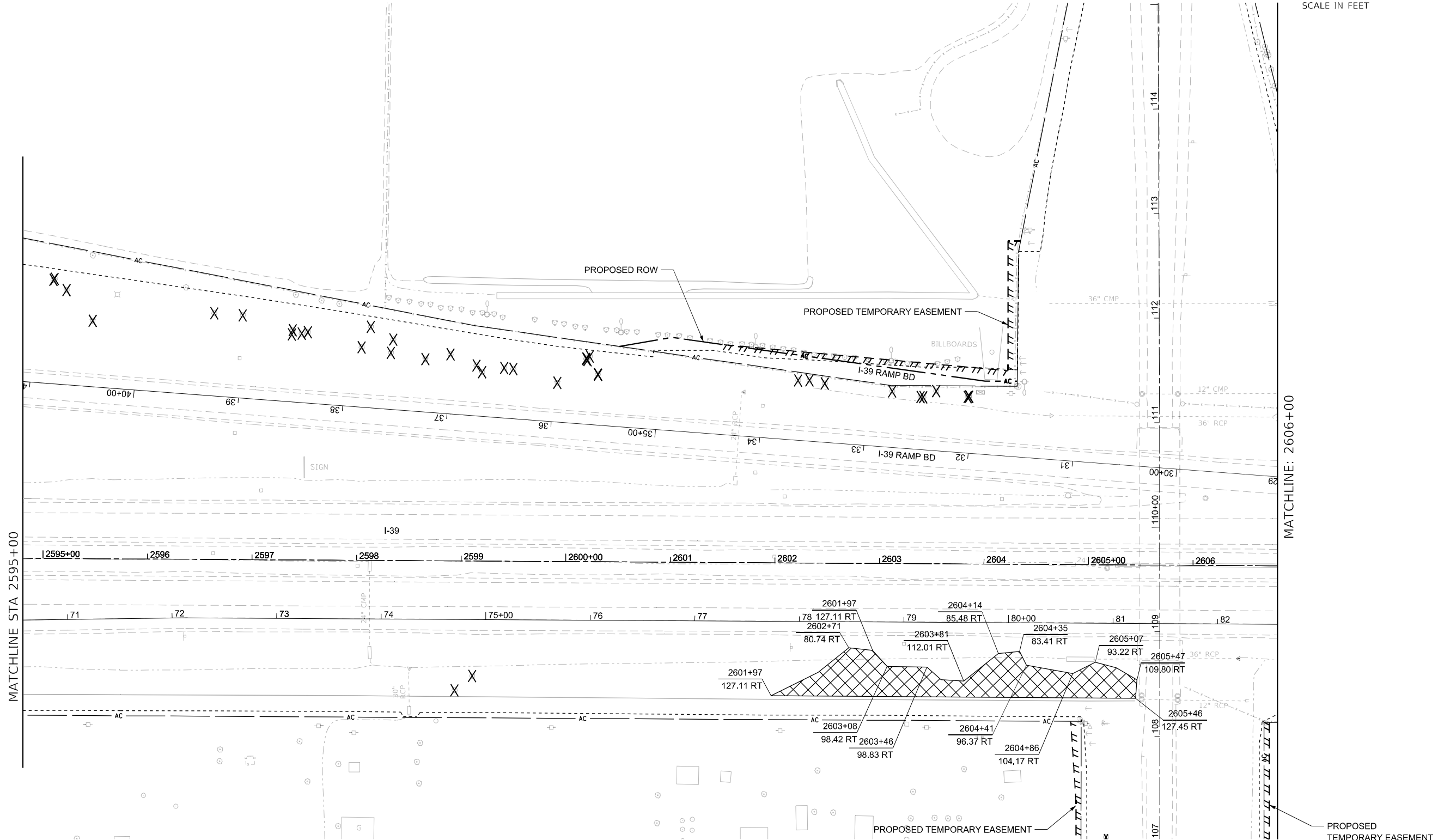
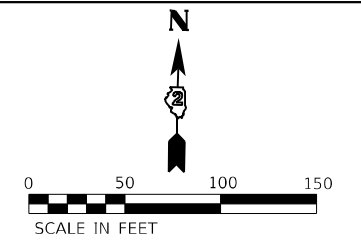
SCALE: 1"=50' SHEET 7 OF 14 SHEETS STA. 60+00 TO STA. 72+00

| F.A.I. RTE. | SECTION | COUNTY | TOTAL SHEETS | SHEET NO. |
|---------------------------|-----------|-----------|--------------|-----------|
| 39 | (201-3)TR | WINNEBAGO | 26 | 19 |
| CONTRACT NO. 64R70 | | | | |
| ILLINOIS FED. AID PROJECT | | | | |

REMOVAL LEGEND

 TREE REMOVAL (ACRE)

 TREE REMOVAL



NOTE: FOR THE PURPOSE OF THIS TREE REMOVAL CONTRACT 64R70, THIS PROPOSED ROW/ PROPOSED EASEMENT SHOULD BE CONSIDERED "NOT YET ACQUIRED". NO WORK OR TREE REMOVAL SHALL TAKE PLACE WITHIN THE PROPOSED ROW/ PROPOSED EASEMENT LINES SHOWN ON THESE PLAN SHEETS.

MODEL: Ramp_BD_08_Removal.dwg (Sheet)
 FILE NAME: p:\Illinois\64R70\64R70\DOT\Documents\DOT\Drawings\Drawings\64R70 - Tree Removal\02_64R70-Sht-TreeRemoval.dwg

MATCHLINE STA 2595+00

MATCHLINE: 2606+00

| | | | |
|--------------|----------------------|------------|----------|
| USER NAME = | Dennisse,Otero-Lopez | DESIGNED - | REVISD - |
| DRAWN - | | REVISD - | |
| PLOT SCALE = | 0.166667' / in. | CHECKED - | REVISD - |
| PLOT DATE = | 6/28/2022 | DATE - | REVISD - |

**STATE OF ILLINOIS
DEPARTMENT OF TRANSPORTATION**

EXISTING ROADWAY AND REMOVAL PLAN

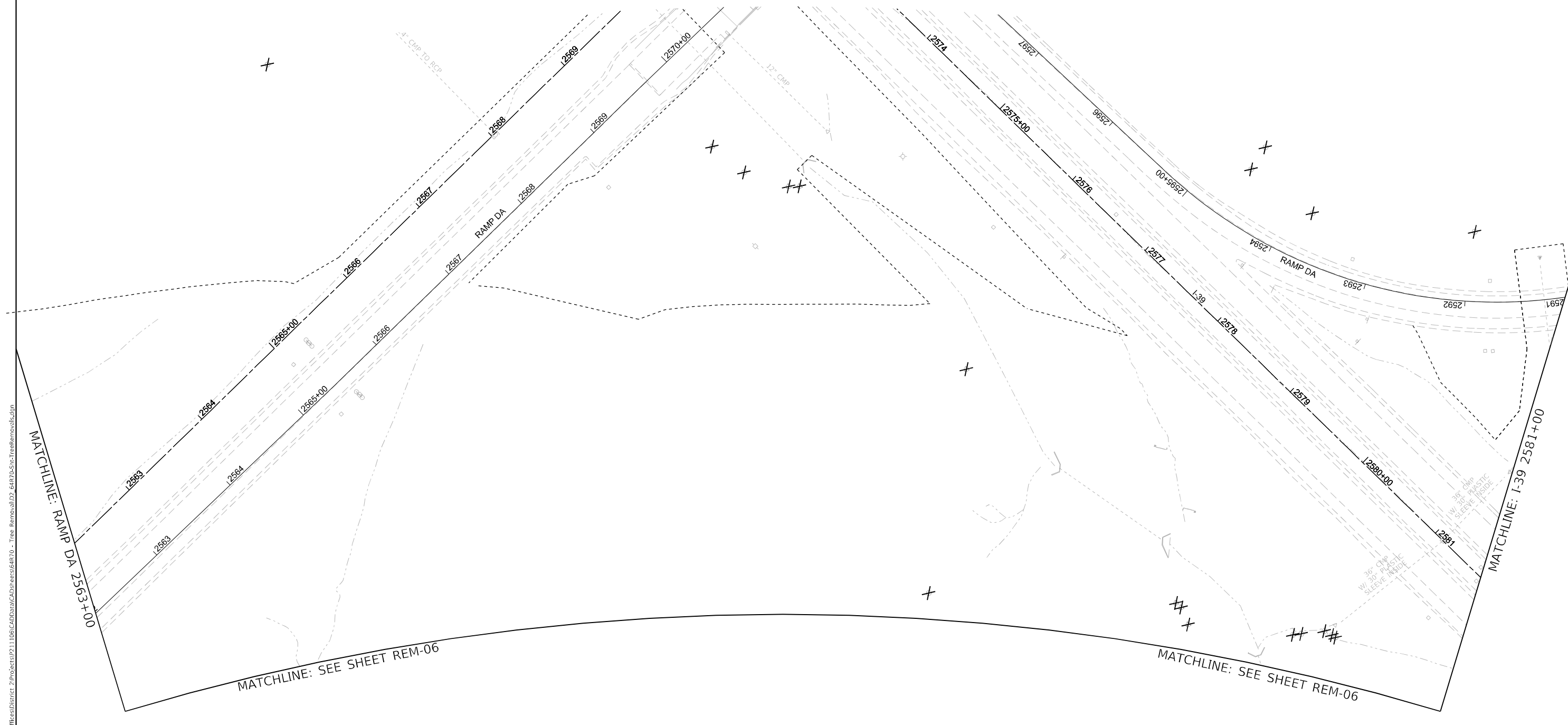
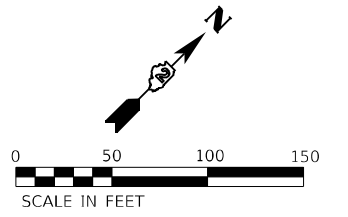
SCALE: 1"=50' SHEET 8 OF 14 SHEETS STA. 72+00 TO STA. XX+XX

| F.A.I. RTE. | SECTION | COUNTY | TOTAL SHEETS | SHEET NO. |
|---------------------------|-----------|-----------|--------------------|-----------|
| 39 | (201-3)TR | WINNEBAGO | 26 | 20 |
| ILLINOIS FED. AID PROJECT | | | CONTRACT NO. 64R70 | |

REMOVAL LEGEND

 TREE REMOVAL (ACRE)

 TREE REMOVAL



NOTE: FOR THE PURPOSE OF THIS TREE REMOVAL CONTRACT 64R70, THIS PROPOSED ROW/ PROPOSED EASEMENT SHOULD BE CONSIDERED "NOT YET ACQUIRED". NO WORK OR TREE REMOVAL SHALL TAKE PLACE WITHIN THE PROPOSED ROW/ PROPOSED EASEMENT LINES SHOWN ON THESE PLAN SHEETS.

MODEL: Ramp RD_DB Removal.dwg (Sheet 1) | SHEET 1
 FILE: \\mllpc-planning\p\6470\6470.dwg | PROJECT: 21\Project\211106\CADD\Drawings\Drawings\6470 - Tree Removal\02_6470-Site-TreeRemoval.dwg

| | | | | | |
|--------------|----------------------|------------|--|-----------|--|
| USER NAME = | Dennisse,Otero-Lopez | DESIGNED - | | REVISED - | |
| DRAWN - | | CHECKED - | | REVISED - | |
| PLOT SCALE = | 0.166667' / in. | DATE - | | REVISED - | |
| PLOT DATE = | 6/28/2022 | | | | |



**STATE OF ILLINOIS
DEPARTMENT OF TRANSPORTATION**

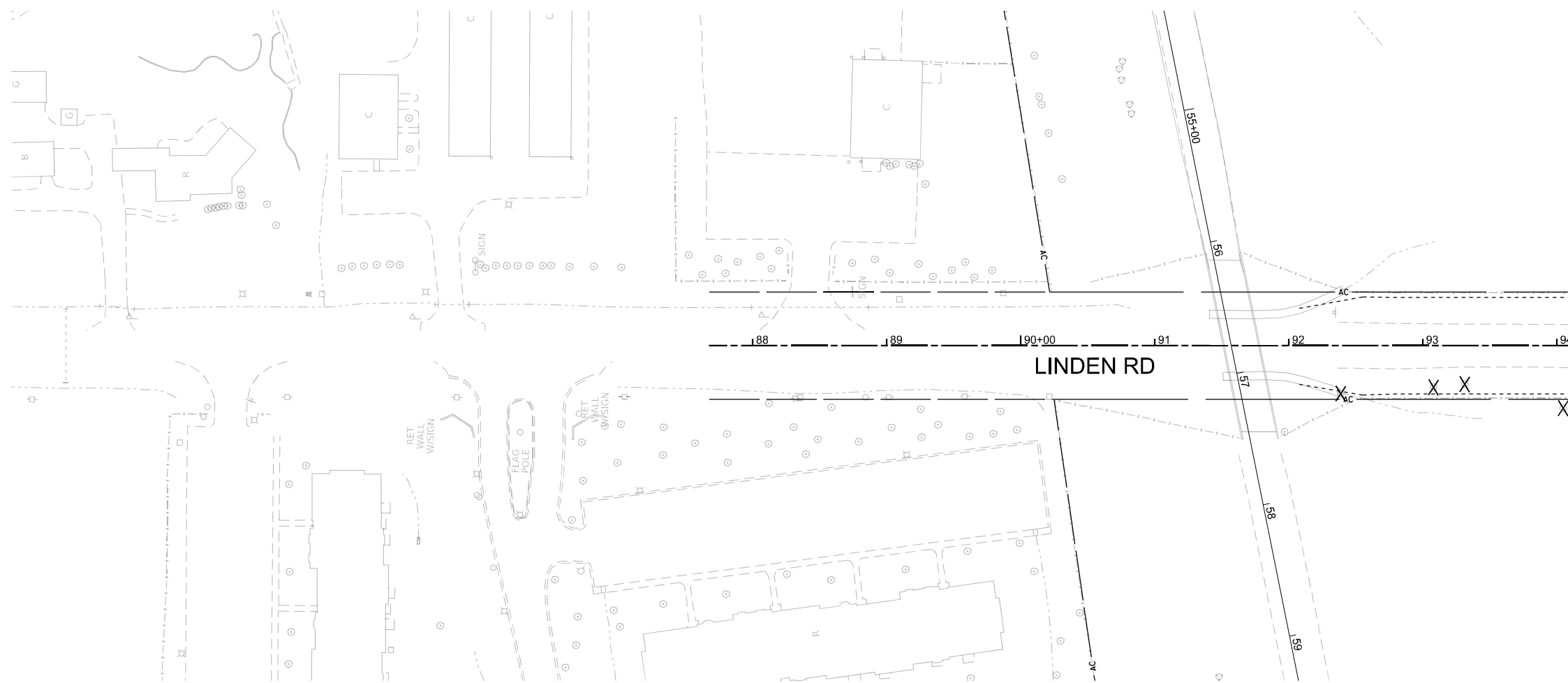
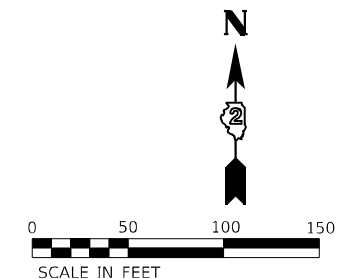
EXISTING ROADWAY AND REMOVAL PLAN

SCALE: 1"=50' SHEET 11 OF 14 SHEETS STA. XX+XX TO STA. XX+XX

| F.A.I. RTE. | SECTION | COUNTY | TOTAL SHEETS | SHEET NO. |
|---------------------------|-----------|-----------|--------------------|-----------|
| 39 | (201-3)TR | WINNEBAGO | 26 | 23 |
| | | | CONTRACT NO. 64R70 | |
| ILLINOIS FED. AID PROJECT | | | | |

REMOVAL LEGEND

-  TREE REMOVAL (ACRE)
-  TREE REMOVAL



NOTE: FOR THE PURPOSE OF THIS TREE REMOVAL CONTRACT 64R70, THIS PROPOSED ROW/ PROPOSED EASEMENT SHOULD BE CONSIDERED "NOT YET ACQUIRED". NO WORK OR TREE REMOVAL SHALL TAKE PLACE WITHIN THE PROPOSED ROW/ PROPOSED EASEMENT LINES SHOWN ON THESE PLAN SHEETS.

MODEL: Linden (Sheet)
FILE NAME: p:\pub\cadd\paw\bea\paw.com\p\w\dot\Documents\DOT Office\District 2\Project\1211106\CADD\paw\CAD\Drawings\64R70 - Tree Removal\1211106\CADD\paw\CAD\Drawings\64R70 - Tree Removal.dwg

| | | | |
|--------------|----------------------|------------|-----------|
| USER NAME = | Dennisse,Otero-Lopez | DESIGNED - | REVISED - |
| DRAWN - | | DRAWN - | REVISED - |
| PLOT SCALE = | 0.166667' / in. | CHECKED - | REVISED - |
| PLOT DATE = | 6/28/2022 | DATE - | REVISED - |

**STATE OF ILLINOIS
DEPARTMENT OF TRANSPORTATION**

EXISTING ROADWAY AND REMOVAL PLAN

SCALE: SHEET 12 OF 14 SHEETS STA. 88+00 TO STA. 94+00

| F.A.I. RTE. | SECTION | COUNTY | TOTAL SHEETS | SHEET NO. |
|---------------------------|-----------|-----------|--------------------|-----------|
| 39 | (201-3)TR | WINNEBAGO | 26 | 24 |
| ILLINOIS FED. AID PROJECT | | | CONTRACT NO. 64R70 | |

