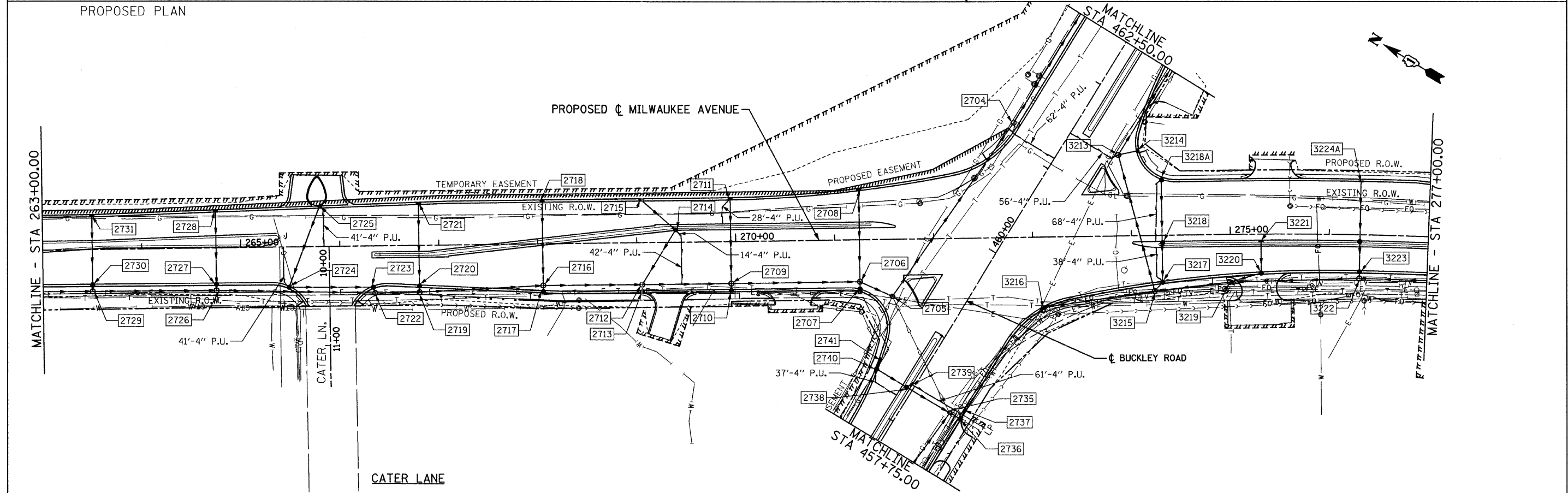


EXISTING PLAN
PROPOSED PLAN



FILE NAME = u:\102901\cadd sheets\shd-drain07.dgn	USER NAME = IDOT	DESIGNED - EJM	REVISED -	STATE OF ILLINOIS DEPARTMENT OF TRANSPORTATION	DRAINAGE AND UTILITY PLAN IL RTE 21 (MILWAUKEE AVE)	F.A.P. RTE.	SECTION	COUNTY	TOTAL SHEETS	SHEET NO.	
	PLOT SCALE = 50.0000' / IN.	DRAWN - BK	REVISED -			330	128R-3	LAKE	518	100	
	PLOT DATE = 8/11/2011	CHECKED - GFL	REVISED -			SCALE: 1" = 50' SHEET NO. OF SHEETS STA. 263+00.00 TO STA. 277+00.00					
		DATE - 4/30/2011	REVISED -			CONTRACT NO. 60953 ILLINOIS FED. AID PROJECT					