

STATE OF ILLINOIS  
DEPARTMENT OF TRANSPORTATION

F.A.P. RTE.	SECTION	COUNTY	TOTAL SHEETS	SHEET NO.
332	D5 CM PATCHING 2024-2	EDGAR	13	1
		ILLINOIS	CONTRACT NO. 70G86	

D-95-037-23



# PROPOSED HIGHWAY PLANS

F.A.P. ROUTE 332 (US 150/IL1)  
SECTION D5 CM PATCHING 2024-2  
EDGAR COUNTY

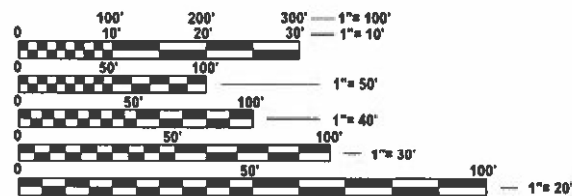
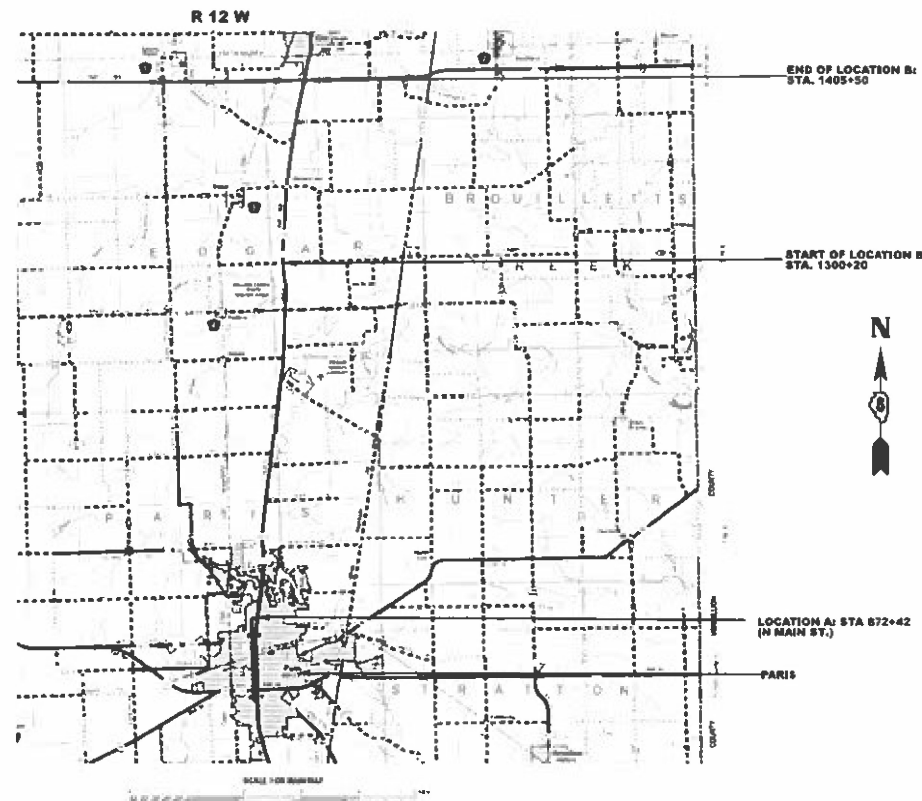
FOR INDEX OF SHEETS, SEE SHEET NO. 2  
FOR SUMMARY OF QUANTITIES, SEE SHEET NO. 3

CURRENT TRAFFIC DATA FOR US 150 / IL 1		
	LEG "A"	LEG "B"
2023 ADT	2950	3250
PU + PC %	91.2	90
SU %	2.7	6.2
MU %	6.1	3.8

LEG "A" IS US 150 / IL 1 FROM US 36 IN CHRISMAN TO 1800TH RD.  
LEG "B" IS US 150 / IL 1 (ELLIOTT ST) FROM MAIN ST TO CENTRAL ST. IN PARIS.

C-95-070-23

AT ELLIOTT ST IN PARIS; AT VARIOUS LOCATIONS  
BETWEEN 2100TH RD & 1800TH RD S OF CHRISMAN



FULL SIZE PLANS HAVE BEEN PREPARED USING STANDARD ENGINEERING SCALES. REDUCED SIZED PLANS WILL NOT CONFORM TO STANDARD SCALES. IN MAKING MEASUREMENTS ON REDUCED PLANS, THE ABOVE SCALES MAY BE USED.

J.U.L.I.E.  
JOINT UTILITY LOCATION INFORMATION FOR EXCAVATION  
1-800-892-0123  
OR 811 TOWNSHIPS: PARIS & EDGAR

PROJECT ENGINEER: RYAN CARROLL  
SQUAD LEADER: CLARE DIETZ  
DESIGNER: TRAVIS HOLLINGSWORTH  
PHONE: 217-465-4181  
CONTRACT NO. 70G86

GROSS LENGTH = 16,150 FT. = 3.06 MILE  
NET LENGTH = 16,150 FT. = 3.06 MILE

STATE OF ILLINOIS  
DEPARTMENT OF TRANSPORTATION

SUBMITTED 6/26 2023  
Kensil A. Barnett, Esq.  
REGIONAL ENGINEER

August 18, 2023  
Scott A. Etk  
ENGINEER OF DESIGN AND ENVIRONMENT

August 18, 2023  
Stephen M. Lewis  
DIRECTOR OF HIGHWAYS PROJECT IMPLEMENTATION

PRINTED BY THE AUTHORITY  
OF THE STATE OF ILLINOIS

**INDEX OF SHEETS**

SHEET NO.	DESCRIPTION
1	COVER SHEET
2	INDEX OF SHEETS
2	LIST OF HIGHWAY STANDARDS
2	GENERAL NOTES
3-4	SUMMARY OF QUANTITIES
5-7	TYPICAL CROSS SECTIONS
8-9	SCHEDULE OF QUANTITIES
10	ELLIOTT / MAIN PATCH
11-12	DETOUR SIGNING
13	TRAFFIC CONTROL & PROTECTION DEVICES (ROAD & SIDEROAD / STREET CLOSURES)

**HIGHWAY STANDARDS**

STANDARD NO.	DESCRIPTION
000001-08	STANDARD SYMBOLS, ABBREVIATIONS AND PATTERNS
001001-02	AREAS OF REINFORCEMENT BARS
001006	DECIMAL OF AN INCH AND OF A FOOT
420701-03	PAVEMENT WELDED WIRE REINFORCEMENT
442101-09	CLASS B PATCHES
701001-02	OFF-RD OPERATIONS, 2L, 2W, MORE THAN 15' (4.5m) AWAY
701006-05	OFF-RD OPERATIONS, 2L, 2W, 15' (4.5 m) TO 24" (600 mm) FROM PAVEMENT EDGE
701011-04	OFF-RD MOVING OPERATIONS, 2L, 2W, DAY ONLY
701201-05	LANE CLOSURE, 2L, 2W, DAY ONLY, FOR SPEEDS > 45 MPH
701601-09	URBAN LANE CLOSURE, MULTILANE, 1W OR 2W WITH NONTRAVERSABLE MEDIAN
701701-10	URBAN LANE CLOSURE, MULTILANE INTERSECTION
701801-06	SIDEWALK, CORNER OR CROSSWALK CLOSURES
701901-08	TRAFFIC CONTROL DEVICES

**GENERAL NOTES**

G.N.-100A  
ELECTRONIC FILES AND/OR ELECTRONIC SURVEY INFORMATION INCLUDING CADD FILES WILL NOT BE AVAILABLE TO THE CONTRACTOR.

G.N.-440B  
THE EXISTING TIE BARS BETWEEN THE EXISTING PAVEMENT AND EXISTING MEDIANS, GUTTERS AND/OR COMBINATION CURB AND GUTTERS THAT ARE FOUND SUITABLE FOR REUSE SHALL BE CLEANED, STRAIGHTENED AND INCORPORATED INTO THE NEW CONSTRUCTION. ANY EXISTING TIE BARS THAT ARE FOUND UNSUITABLE TO BE INCORPORATED INTO THE PROPOSED CONSTRUCTION DUE TO EXCESSIVE RUSTING OR DISTRESS SHALL BE REMOVED FLUSH WITH THE FACE OF THE EXISTING CONCRETE AND DISPOSED OF OUTSIDE THE LIMITS OF THE RIGHT-OF-WAY IN ACCORDANCE WITH ARTICLE 202.03 OF THE STANDARD SPECIFICATIONS.

THIS WORK WILL NOT BE PAID FOR SEPARATELY BUT SHALL BE CONSIDERED INCLUDED IN THE VARIOUS REMOVAL PAY ITEMS AND NO ADDITIONAL COMPENSATION WILL BE ALLOWED.

G.N.-780 (SPL)  
PAVEMENT MARKING FOR THIS PROJECT IS TO BE PERFORMED BY OTHERS, FIELD PERSONNEL SHALL NOTIFY GARY SIMS, DISTRICT 5 TRAFFIC OPERATIONS ENGINEER AT (217) 251-4859 WHEN THE PROJECT IS COMPLETE AND READY FOR PAVEMENT MARKINGS.

**NO COMMITMENTS**

MODEL: \\MODELS\MJEE  
FILE NAME: \\projects\cadd\hwy\com\p\m\DOT\Documents\DOT Office\District 5\ORD Project\DOT\GSE\CADD\Data\CAD\hwy\DOT\GSE-Std\hwy.dgn

USER NAME = travis.hollingsworth	DESIGNED -	REVISED -
	DRAWN -	REVISED -
PLOT SCALE = 0.16666633' / in.	CHECKED -	REVISED -
PLOT DATE = 6/22/2023	DATE -	REVISED -

**STATE OF ILLINOIS  
DEPARTMENT OF TRANSPORTATION**

INDEX OF SHEETS, HIGHWAY STANDARDS,  
& GENERAL NOTES

SCALE: 1"=50' SHEET 1 OF 1 SHEETS STA. TO STA.

F.A.P. RTE.	SECTION	COUNTY	TOTAL SHEETS	SHEET NO.
332	D5 CM PATCHING 2024-2	EDGAR	13	2
CONTRACT NO. 70G86			ILLINOIS FED. AID PROJECT	

# SUMMARY OF QUANTITIES

LOCATION OF WORK:     FUNDING BREAKOUT: CONSTRUCTION TYPE CODE:	FAP 332 (US 150 / IL 1) OTHER PRINCIPAL ARTERIAL URBAN STA. 872+42 STA. 872+90.48 EDGAR 100% STATE 0006	FAP 332 (150 / IL 1) OTHER PRINCIPAL ARTERIAL RURAL STA. 1300+20 STA. 1405+50 EDGAR 100% STATE 0006
---	--	--

CODE NO.	ITEM	UNIT	TOTAL QUANTITY	STATE QUANTITY	STATE QUANTITY
44200050	WELDED WIRE REINFORCEMENT	SQ YD	574.00	165.00	409.00
44201007	CLASS B PATCHES, TYPE II, 13 INCH	SQ YD	220.00		220.00
44201011	CLASS B PATCHES, TYPE III, 13 INCH	SQ YD	34.00		34.00
44201013	CLASS B PATCHES, TYPE IV, 13 INCH	SQ YD	375.00		375.00
44201025	CLASS B PATCHES, TYPE IV, 14 INCH	SQ YD	165.00	165.00	
44201299	DOWEL BARS 1 1/2"	EACH	1,001.00	133.00	868.00
44213200	SAW CUTS	FOOT	2,429.00	296.00	2,133.00
44213204	TIE BARS 3/4"	EACH	95.00	34.00	61.00
67100100	MOBILIZATION	L SUM	1.00	0.75	0.25
70100450	TRAFFIC CONTROL AND PROTECTION, STANDARD 701201	L SUM	1.00		1.00
70102630	TRAFFIC CONTROL AND PROTECTION, STANDARD 701601	L SUM	1.00	1.00	
70102635	TRAFFIC CONTROL AND PROTECTION, STANDARD 701701	L SUM	1.00	1.00	
70102640	TRAFFIC CONTROL AND PROTECTION, STANDARD 701801	L SUM	1.00	1.00	
70107025	CHANGEABLE MESSAGE SIGN	CAL DA	3.00	3.00	
Z0013798	CONSTRUCTION LAYOUT	L SUM	1.00	0.50	0.50
* DENOTES SPECIALTY ITEM					

 MODEL: \\MODELS\MJES  
 FILE NAME: \\proj\csc\proj\11001\11001.dwg

USER NAME = travis.hollingsworth	DESIGNED -	REVISED -
	DRAWN -	REVISED -
PLOT SCALE = 0.16666833' / in.	CHECKED -	REVISED -
PLOT DATE = 6/26/2023	DATE -	REVISED -

**STATE OF ILLINOIS  
DEPARTMENT OF TRANSPORTATION**
**SUMMARY OF QUANTITIES**

SCALE: 1"=50'      SHEET 1 OF 2 SHEETS      STA.      TO STA.

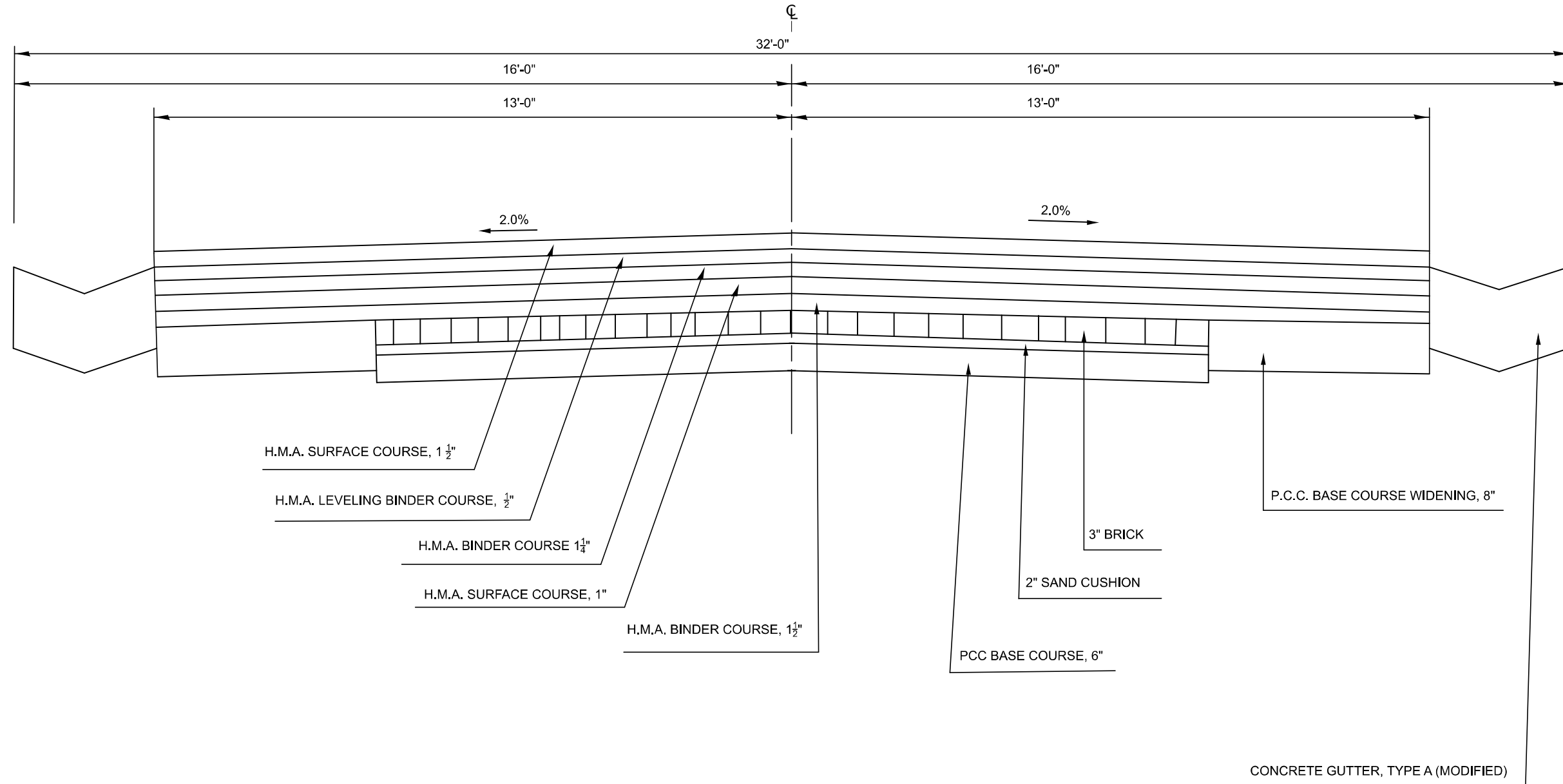
F.A.P. RTE.	SECTION	COUNTY	TOTAL SHEETS	SHEET NO.
332	D5 CM PATCHING 2024-2	EDGAR	13	3
CONTRACT NO. 70G86				
ILLINOIS FED. AID PROJECT				



# 1 EXISTING TYPICAL CROSS SECTION

ELLIOTT STREET

STATION TO STATION  
179+23.42 185+65



MODEL: \\MODEL\M1E2  
 FILE NAME: \\P:\bids\pcc\hwy\com\PM\DOT\Documents\DOT Office\District 5\ORD Project\057068\CADD\05\057068-Typical.dgn

USER NAME = travis.hollingsworth	DESIGNED -	REVISED -
PLOT SCALE = 0.16666833' / in.	DRAWN -	REVISED -
PLOT DATE = 6/22/2023	CHECKED -	REVISED -
	DATE -	REVISED -

**STATE OF ILLINOIS  
DEPARTMENT OF TRANSPORTATION**

EXISTING TYPICAL CROSS SECTIONS

SCALE: 1"=50' SHEET 1 OF 3 SHEETS STA. \_\_\_+\_\_\_ TO STA. \_\_\_+\_\_\_

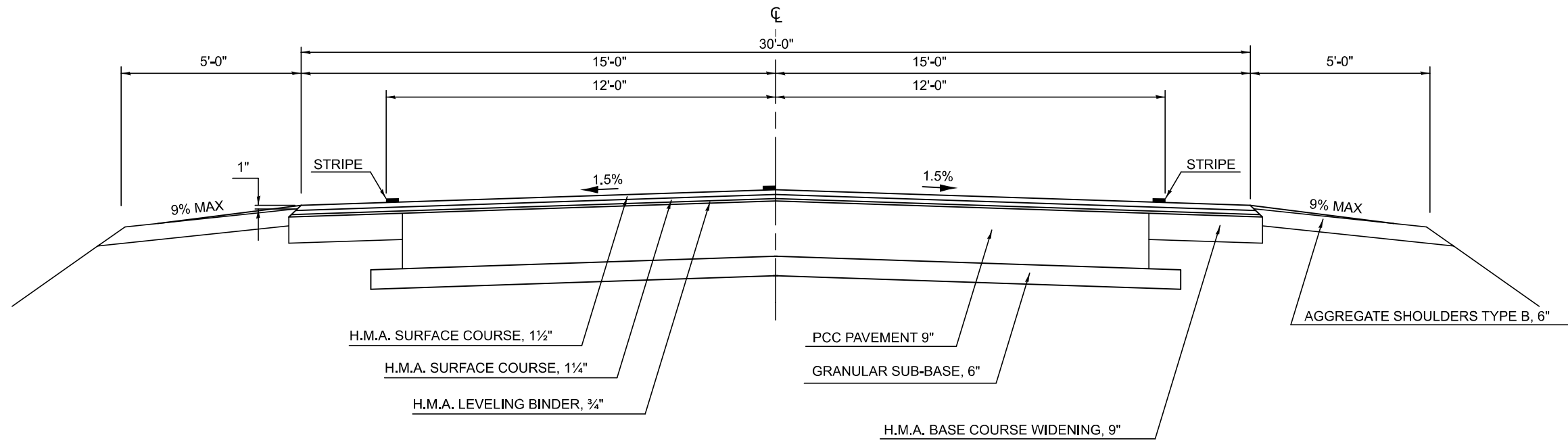
F.A.P. RTE.	SECTION	COUNTY	TOTAL SHEETS	SHEET NO.
332	D5 CM PATCHING 2024-2	EDGAR	13	5
CONTRACT NO. 70G86				
ILLINOIS FED. AID PROJECT				



### 3 EXISTING TYPICAL CROSS SECTION

VARIOUS LOCATIONS SOUTH OF CHRISMAN

STATION TO STATION  
1300+20 1405+50



MODEL: \\MODEL\M1E2  
 FILE NAME: \\P:\dot\documents\DOT Office\District 5\ORD Project\057068\CADD\057068-Typical.dgn

USER NAME = travis.hollingsworth	DESIGNED -	REVISED -
PLOT SCALE = 0.16666633' / in.	DRAWN -	REVISED -
PLOT DATE = 6/22/2023	CHECKED -	REVISED -
	DATE -	REVISED -

**STATE OF ILLINOIS  
DEPARTMENT OF TRANSPORTATION**

EXISTING TYPICAL CROSS SECTIONS

SCALE: 1"=50' SHEET 3 OF 3 SHEETS STA. \_\_\_+\_\_\_ TO STA. \_\_\_+\_\_\_

F.A.P. RTE.	SECTION	COUNTY	TOTAL SHEETS	SHEET NO.
332	D5 CM PATCHING 2024-2	EDGAR	13	7
CONTRACT NO. 70G86				
ILLINOIS FED. AID PROJECT				

# SCHEDULE OF QUANTITIES

LOCATION A: US 150 / IL 1 AT ELLIOT ST.		CLASS B PATCHES, TYPE IV, 14 INCH	DOWEL BARS 1 1/2"	SAW CUTS	TIE BARS 3/4"	WELDED WIRE REINFORCEMENT
STATION	DIRECTION	44201025 (SQ YD)	44201299 (EACH)	44213200 (FT)	44213204 (EACH)	42000060 (SQ YD)
872+42 (N. MAIN ST.)	SB	165.0	133.0	296.0	33.8	165.0
		165.0	133.0	296.0	34.0	165.0
	SUB TOTALS	(SQ YD)	(EACH)	(FT)	(EACH)	(SQ YD)

MODEL: \\MODEL\M1E2  
 FILE NAME: \\P:\DOT\Documents\DOT Office\District 5\ORD Project\DOT\ORD\CADD\DOT\ORD\DOT\ORD\Sched\1.dgn

USER NAME = travis.hollingsworth	DESIGNED -	REVISED -
	DRAWN -	REVISED -
PLOT SCALE = 0.16666833' / in.	CHECKED -	REVISED -
PLOT DATE = 6/22/2023	DATE -	REVISED -

**STATE OF ILLINOIS  
DEPARTMENT OF TRANSPORTATION**

SCHEDULE OF QUANTITIES

SCALE: 1"=50'      SHEET 1    OF 2    SHEETS    STA.                    TO STA.

F.A.P. RTE.	SECTION	COUNTY	TOTAL SHEETS	SHEET NO.
332	D5 CM PATCHING 2024-2	EDGAR	13	8
CONTRACT NO. 70G86				
ILLINOIS FED. AID PROJECT				



# SCHEDULE OF QUANTITIES

LOCATION B: US 150 / IL 1  
SOUTH OF CHRISMAN

STATION	DIRECTION	LENGTH (FT)	WIDTH (FT)	CLASS B PATCHES, TYPE II, 13 INCH 44201007 (SQ YD)	CLASS B PATCHES, TYPE III, 13 INCH 44201011 (SQ YD)	CLASS B PATCHES, TYPE IV, 13 INCH 44201013 (SQ YD)	DOWEL BARS 1 1/2" 44201299 (EACH)	SAW CUTS 44213200 (FT)	TIE BARS 3/4" 44213204 (EACH)	WELDED WIRE REINFORCEMENT 42000060 (SQ. YD)
				44201019	44201023	44201025	44201299	44213200	44213204	44213100
1300+20	NB	6	15	10.0	0.0	0.0	26	57.0	0	0.0
1301+10	NB	6	15	10.0	0.0	0.0	26	57.0	0	0.0
1320+00	NB	6	15	10.0	0.0	0.0	26	57.0	0	0.0
1325+40	NB	6	13	8.7	0.0	0.0	22	51.0	0	0.0
1328+00	NB	6	15	10.0	0.0	0.0	26	57.0	0	0.0
1329+00	NB	6	15	10.0	0.0	0.0	26	57.0	0	0.0
1329+80	NB	15	15	0.0	0.0	25.0	26	75.0	0	25.0
1330+90	NB	15	15	0.0	0.0	25.0	26	75.0	0	25.0
1331+60	NB	6	15	10.0	0.0	0.0	26	57.0	0	0.0
1332+00	NB	8	15	13.3	0.0	0.0	26	61.0	0	0.0
1332+60	NB	6	15	10.0	0.0	0.0	26	57.0	0	0.0
1336+50	NB	50	15	0.0	0.0	83.3	52	145.0	17	83.3
1336+50	NB	8	12	10.7	0.0	0.0	20	52.0	0	0.0
1336+50	SB	8	12	10.7	0.0	0.0	20	52.0	0	0.0
1337+80	NB	6	15	10.0	0.0	0.0	26	57.0	0	0.0
1339+10	NB	6	15	10.0	0.0	0.0	26	57.0	0	0.0
1339+70	NB	45	15	0.0	0.0	75.0	52	135.0	15	75.0
1339+70	SB	35	15	0.0	0.0	58.3	39	115.0	12	58.3
1340+95	NB	30	15	0.0	0.0	50.0	39	105.0	10	50.0
1341+30	NB	6	15	10.0	0.0	0.0	26	57.0	0	0.0
1342+00	NB	20	15	0.0	0.0	33.3	26	85.0	7	33.3
1343+15	NB	6	15	10.0	0.0	0.0	26	57.0	0	0.0
1343+50	NB	10	15	0.0	16.7	0.0	26	65.0	0	16.7
1343+70	NB	6	15	10.0	0.0	0.0	26	57.0	0	0.0
1344+00	NB	6	15	10.0	0.0	0.0	26	57.0	0	0.0
1379+50	NB	6	15	10.0	0.0	0.0	26	57.0	0	0.0
1383+00	NB	15	15	0.0	0.0	25.0	26	75.0	0	25.0
1392+15	NB	10	15	0.0	16.7	0.0	26	65.0	0	16.7
1405+40	NB	8	15	13.3	0.0	0.0	26	61.0	0	0.0
1405+40	SB	8	15	13.3	0.0	0.0	26	61.0	0	0.0
1405+50	NB	6	15	10.0	0.0	0.0	26	57.0	0	0.0
SUB TOTALS				220.0 (SQ. YD)	33.3 (SQ. YD)	375.0 (SQ. YD)	868.0 (EACH)	2133.0 (FT)	61.0 (EACH)	408.3 (SQ. YD)

MODEL: \\MODELS\MEE... FILE NAME: ...

USER NAME = travis.hollingsworth	DESIGNED -	REVISED -
	DRAWN -	REVISED -
PLOT SCALE = 0.16666833' / in.	CHECKED -	REVISED -
PLOT DATE = 6/26/2023	DATE -	REVISED -

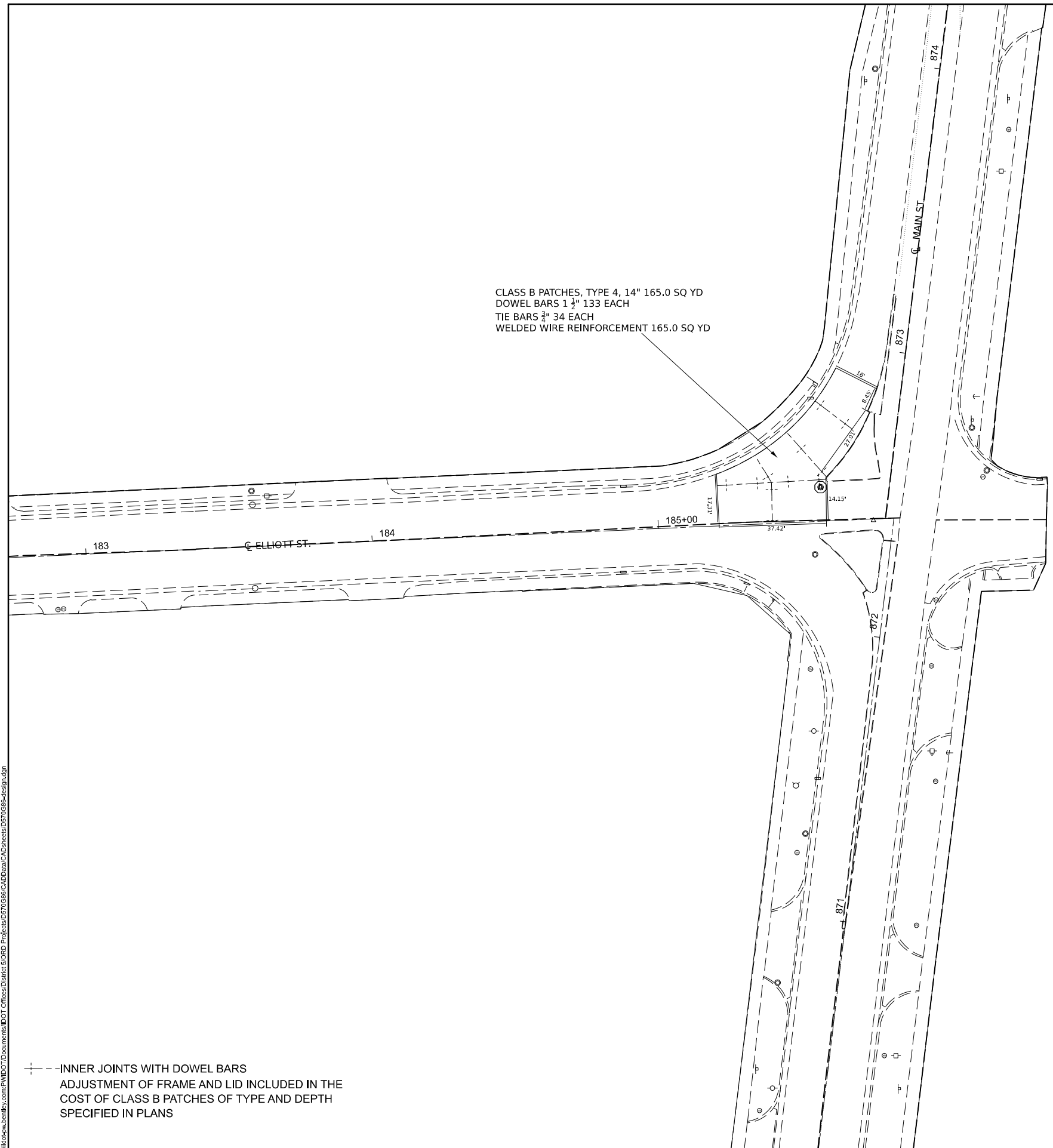
**STATE OF ILLINOIS  
DEPARTMENT OF TRANSPORTATION**

**SCHEDULE OF QUANTITIES**

SCALE: 1"=50'      SHEET 2 OF 2 SHEETS      STA.      TO STA.

F.A.P. RTE.	SECTION	COUNTY	TOTAL SHEETS	SHEET NO.
332	D5 CM PATCHING 2024-2	EDGAR	13	9
CONTRACT NO. 70G86				
ILLINOIS FED. AID PROJECT				

MODEL: \\MODEL\M1E6  
 FILE NAME: \\p101\pc\k\hollingsworth\com\p101\DOT\Documents\DOT Office\District 5\ORD Project\DOT\G86\CADD\Info\CAD\Sheet\DOT\G86-Design.dgn



--- INNER JOINTS WITH DOWEL BARS  
 ADJUSTMENT OF FRAME AND LID INCLUDED IN THE  
 COST OF CLASS B PATCHES OF TYPE AND DEPTH  
 SPECIFIED IN PLANS

USER NAME = travis.hollingsworth	DESIGNED -	REVISED -
	DRAWN -	REVISED -
PLOT SCALE = 0.16666633' / in.	CHECKED -	REVISED -
PLOT DATE = 6/22/2023	DATE -	REVISED -

**STATE OF ILLINOIS  
 DEPARTMENT OF TRANSPORTATION**

**ELLIOTT / MAIN PATCH**

SCALE: 1"=20' SHEET 1 OF 1 SHEETS STA. \_\_\_+\_\_\_ TO STA. \_\_\_+\_\_\_

F.A.P. RTE.	SECTION	COUNTY	TOTAL SHEETS	SHEET NO.
332	D5 CM PATCHING 2024-2	EDGAR	13	10
CONTRACT NO. 70G86				
ILLINOIS FED. AID PROJECT				



MODEL: MODELNAME  
 FILE NAME: P:\P\DOT\Documents\DOT Office\District 5\ORD Project\057056\CADD\057056-057056-detouring.dgn

USER NAME = travis.hollingsworth	DESIGNED -	REVISED -
	DRAWN -	REVISED -
PLOT SCALE = 0.16666633' / in.	CHECKED -	REVISED -
PLOT DATE = 6/22/2023	DATE -	REVISED -

**STATE OF ILLINOIS**  
**DEPARTMENT OF TRANSPORTATION**

DETOUR SIGNING

SCALE: 1"=20'      SHEET 1    OF 2    SHEETS    STA. \_\_\_+\_\_\_    TO STA. \_\_\_+\_\_\_

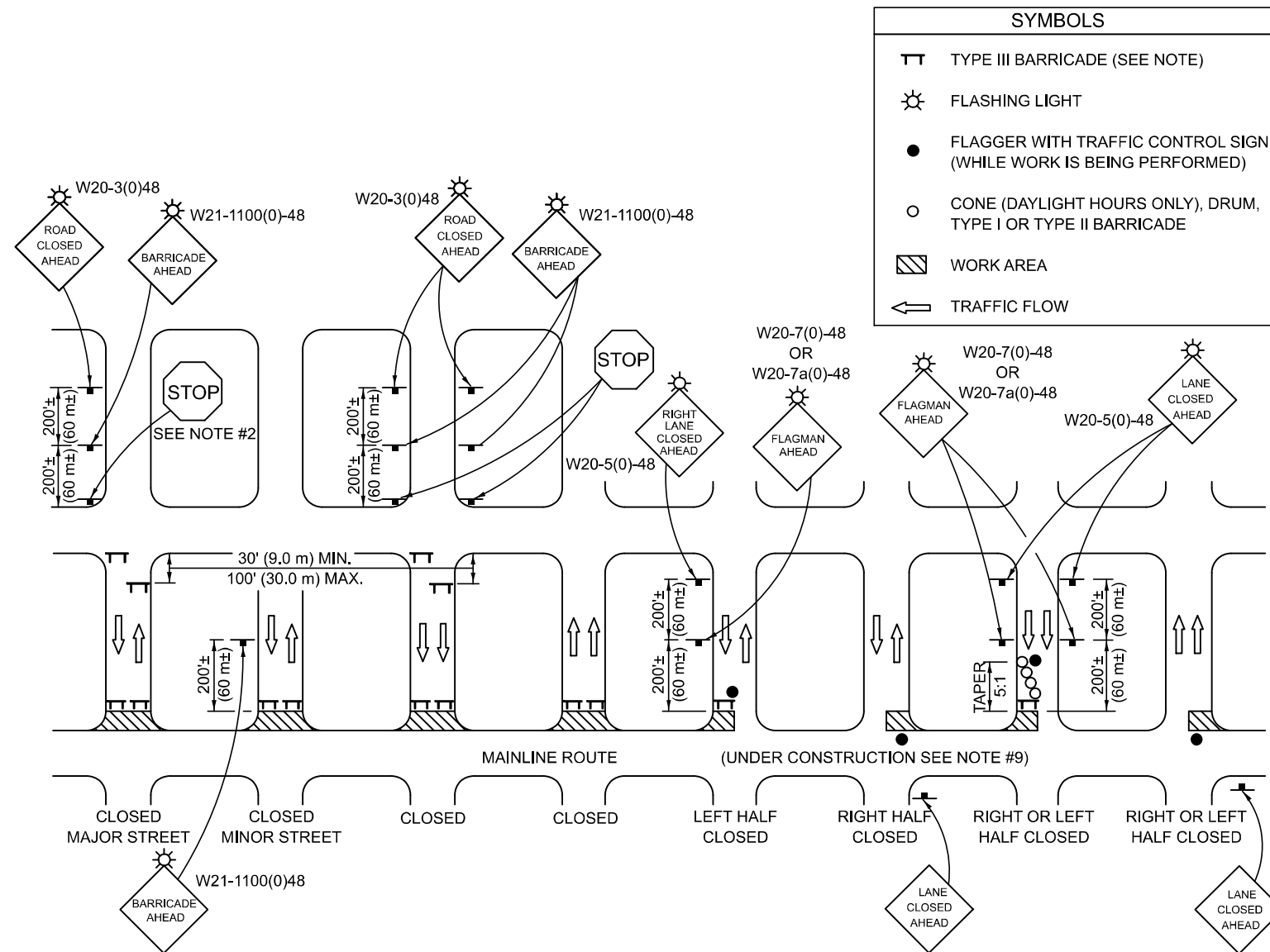
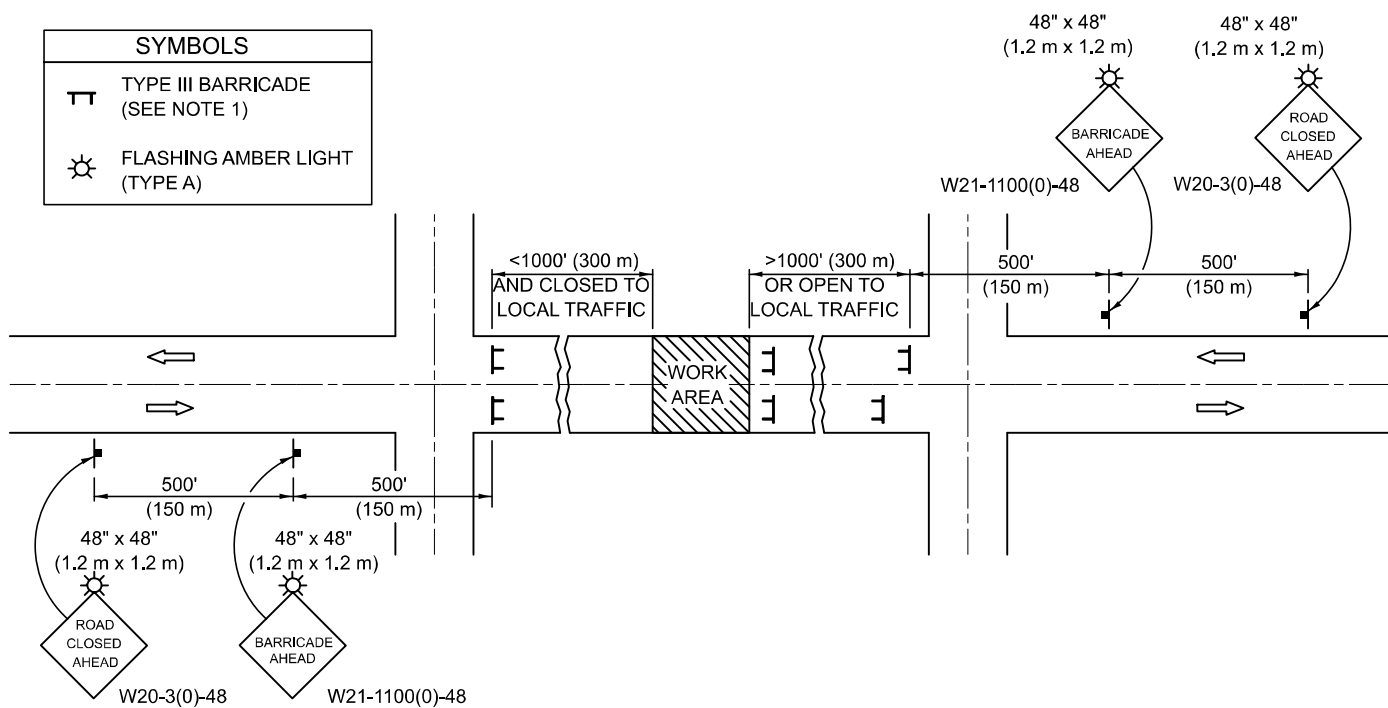
F.A.P. RTE.	SECTION	COUNTY	TOTAL SHEETS	SHEET NO.
332	D5 CM PATCHING 2024-2	EDGAR	13	11
CONTRACT NO. 70G86				
ILLINOIS FED. AID PROJECT				



## ROAD CLOSURE

## SIDEROAD / STREET CLOSURE

SYMBOLS	
	TYPE III BARRICADE (SEE NOTE 1)
	FLASHING AMBER LIGHT (TYPE A)



SYMBOLS	
	TYPE III BARRICADE (SEE NOTE)
	FLASHING LIGHT
	FLAGGER WITH TRAFFIC CONTROL SIGN (WHILE WORK IS BEING PERFORMED)
	CONE (DAYLIGHT HOURS ONLY), DRUM, TYPE I OR TYPE II BARRICADE
	WORK AREA
	TRAFFIC FLOW

### GENERAL NOTES

- TYPE III BARRICADES SHALL BE AS SHOWN ON STANDARD 701901 "TYPICAL APPLICATIONS OF TYPE III BARRICADES CLOSING A ROAD". EACH TYPE III BARRICADE SHALL HAVE TWO FLASHING AMBER LIGHTS MOUNTED ABOVE IT.
- IF THE ROAD IS OPEN TO LOCAL TRAFFIC OR EXCEEDS 1000' (300 m), ANOTHER SET OF TYPE III BARRICADES, EQUIPPED AS IN NOTE 1 ABOVE, SHALL BE PLACED AT EACH END OF THE WORK AREA.
- WHEN A STOP CONDITION EXISTS, NO SIGNS ARE REQUIRED IN ADVANCE OF THE "STOP" SIGN WHEN THE ROAD IS CLOSED WITHIN 100' (30 m) OF THE INTERSECTION.
- STANDARD 701901 SHALL APPLY FOR THE PLACEMENT & DESIGN OF TYPE III BARRICADES.
- IF A TYPE III BARRICADE WITH AN ATTACHED SIGN PANEL WHICH MEETS NCHRP 350 IS NOT AVAILABLE, THE SIGNS MAY BE MOUNTED ON AN NCHRP 350 TEMPORARY SIGN SUPPORT DIRECTLY IN FRONT OF THE BARRICADE.
- REFLECTORIZED STRIPING SHALL APPEAR ON BOTH SIDES OF THE TY III BARRICADES IF ROAD IS OPEN TO LOCAL TRAFFIC.
- ALL SIGNS SHALL BE POST MOUNTED IF THE CLOSURE TIME EXCEEDS FOUR DAYS.
- A MINIMUM OF TWO FLASHING LIGHTS SHALL BE USED AT NIGHT ON EACH APPROACH IN ADVANCE OF THE WORK AREA. FLASHING LIGHTS SHALL BE INSTALLED ABOVE THE FIRST TWO SIGNS IN THE SERIES.
- LONGITUDINAL DIMENSIONS MAY BE ADJUSTED SLIGHTLY TO FIT FIELD CONDITIONS.
- FORMS BT. 725 AND BT. 726 ARE REQUIRED.
- WHEN A SIDEROAD INTERSECTS THE HIGHWAY ON WHICH WORK IS BEING PERFORMED, ADDITIONAL TRAFFIC DEVICES SHALL BE ERECTED AND PROVIDED AS DIRECTED BY THE ENGINEER.
- AN ADDITIONAL SIGN MAY BE REQUIRED AT A MAJOR INTERSECTING ROAD IN ADVANCE OF THE CLOSURE. THE ADDITIONAL SIGN SHALL GIVE THE DISTANCE TO THE BARRICADE IN MILES OR FRACTIONS OF A MILE.

### GENERAL NOTES

- TYPE III BARRICADES SHALL BE AS SHOWN ON "TYPICAL APPLICATIONS OF TYPE III BARRICADES CLOSING A ROAD". EACH TYPE III BARRICADE SHALL HAVE TWO FLASHING AMBER LIGHTS MOUNTED ABOVE IT.
- WHERE A STOP CONDITION EXISTS, AS SHOWN ABOVE, WARNING SIGNS MAY BE OMITTED IN ADVANCE OF THE "STOP" SIGN.
- STANDARD 701901 SHALL APPLY FOR THE PLACEMENT & MANUFACTURE OF TYPE III BARRICADES.
- ALL SIGNS SHALL BE POST MOUNTED IF THE CLOSURE TIME EXCEEDS FOUR DAYS.
- ONE FLASHING LIGHT IS REQUIRED ABOVE EACH ADVANCE WARNING SIGN DURING HOURS OF DARKNESS.
- LONGITUDINAL DIMENSIONS MAY BE ADJUSTED SLIGHTLY TO FIT FIELD CONDITIONS.
- FORMS BT 725 AND BT 726 ARE REQUIRED.
- THE MAINLINE ROUTE TEMPORARY TRAFFIC CONTROL SHALL BE IN ACCORDANCE WITH THE PLANS, SPECIAL PROVISIONS AND STANDARD SPECIFICATIONS.
- ALL FLAGGERS REQUIRED AT SIDE ROADS AND ENTRANCES REMAINING OPEN TO TRAFFIC AND/OR ADDITIONAL BARRICADES REQUIRED BY THE ENGINEER TO CLOSE SIDE ROADS AND ENTRANCES WILL BE PAID FOR ACCORDING TO ARTICLE 109.04.

Note: All dimensions are in INCHES (millimeters) unless otherwise shown.

DISTRICT 5 DETAIL NO. 7020000

STATE OF ILLINOIS  
DEPARTMENT OF TRANSPORTATION

TRAFFIC CONTROL & PROTECTION DEVICES  
(ROAD & SIDEROAD / STREET CLOSURES)

F.A.P. RTE.	SECTION	COUNTY	TOTAL SHEETS	SHEET NO.
332	D5 CM PATCHING 2024-2	EDGAR	13	13
CONTRACT NO. 70G86				
ILLINOIS FED. AID PROJECT				

SCALE: 1"=50' SHEET 1 OF 1 SHEETS STA. TO STA.

MODEL: R:\MODEL\AMES... FILE NAME: ...