

STATE OF ILLINOIS
DEPARTMENT OF TRANSPORTATION

F.A.P. RTE.	SECTION	COUNTY	TOTAL SHEETS	SHEET NO.
310	D2 PP 2024-02	ROCK ISLAND	4	1
		ILLINOIS	CONTRACT NO. 64S56	

C-92-123-23



LOCATION OF SECTION INDICATED THUS: -

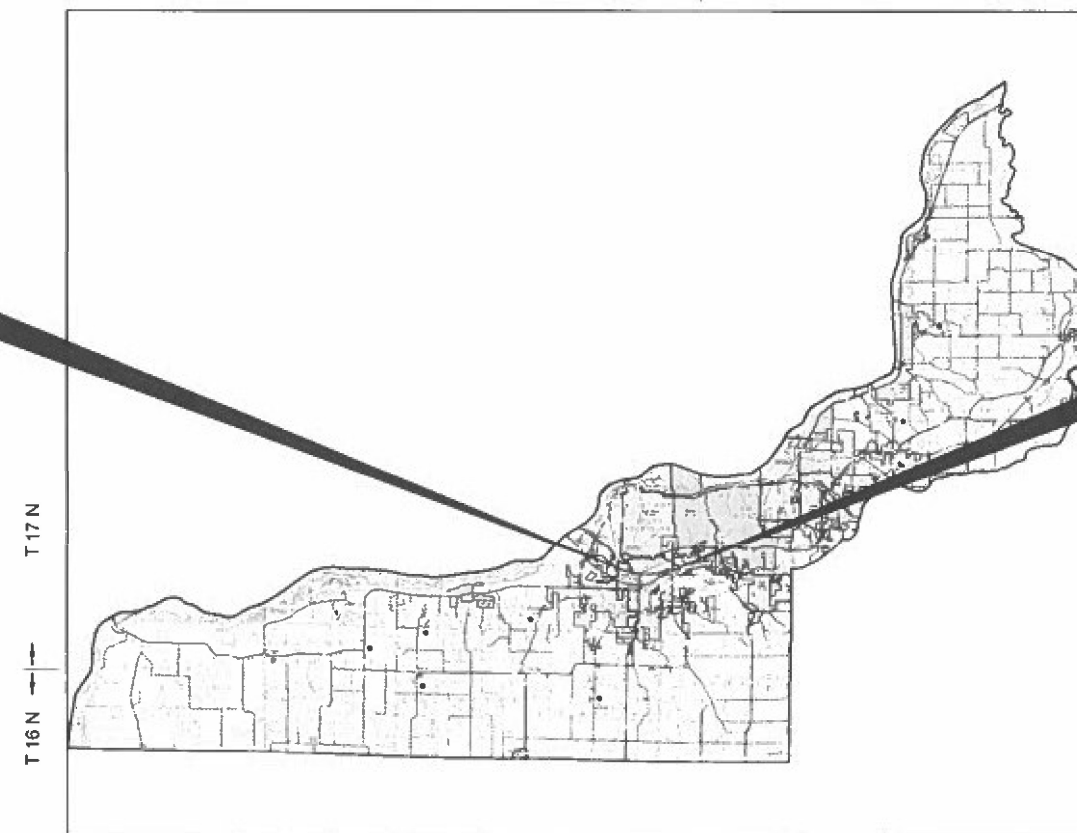
PROPOSED
HIGHWAY PLANS

FAP 310 (US 67)
SECTION D2 PP 2024-02
PAVEMENT PATCHING
ROCK ISLAND COUNTY

C-92-123-23

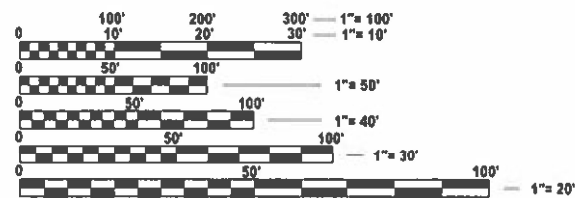
FOR INDEX OF SHEETS & FOR STATE STANDARDS,
SEE SHEET NO. 2

R 2 W R 9 W



PROJECT BEGINS
STA. 456+67 U.S. 67
(3rd ave.)

PROJECT ENDS
STA. 63+00 AIRPORT RD



FULL SIZE PLANS HAVE BEEN PREPARED USING STANDARD
ENGINEERING SCALES. REDUCED SIZED PLANS WILL NOT
CONFORM TO STANDARD SCALES. IN MAKING MEASUREMENTS
ON REDUCED PLANS, THE ABOVE SCALES MAY BE USED.

J.U.L.I.E.
JOINT UTILITY LOCATION INFORMATION FOR EXCAVATION
1-800-892-0123
OR 811

GROSS LENGTH = 6,336 FT. = 1.2 MILES
NET LENGTH = 6,336 FT. = 1.2 MILES

STATE OF ILLINOIS
DEPARTMENT OF TRANSPORTATION

SUBMITTED June 23rd 2023
[Signature]
REGIONAL ENGINEER

August 18, 2023
[Signature]
ENGINEER OF DESIGN AND ENVIRONMENT

August 18, 2023
[Signature]
DIRECTOR OF HIGHWAYS PROJECT IMPLEMENTATION

PRINTED BY THE AUTHORITY
OF THE STATE OF ILLINOIS

CONTRACT NO. 64S56

INDEX OF SHEETS

- 1 COVER SHEET
- 2 INDEX OF SHEETS, STANDARDS, GENERAL NOTES
- 3 SUMMARY OF QUANTITIES
- 4 SCHEDULE OF QUANTITIES

HIGHWAY STANDARDS

- 420001-10 PAVEMENT JOINTS
- 420701-03 PAVEMENT WELDED WIRE REINFORCEMENT
- 442101-09 CLASS B PATCHES
- 701101-05 OFF-ROAD OPERATIONS, MULTILANE, 15'(4.5m) TO 24'(600mm) FROM PAVEMENT EDGE
- 701422-10 LANE CLOSURE, MULTILANE, FOR SPEEDS \geq 45 MPH TO 55 MPH
- 701601-09 URBAN LANE CLOSURE, MULTILANE, 1W OR 2W WITH NONTRAVERSABLE MEDIAN
- 701701-10 URBAN LANE CLOSURE, MULTILANE INTERSECTION
- 701901-08 TRAFFIC CONTROL DEVICES
- 720011-01 METAL POST FOR SIGNS, MARKERS AND DELINEATORS
- 728001-01 TELESCOPING STEEL SIGN SUPPORT
- 729001-01 APPLICATIONS OF TYPES A AND B METAL POST (FOR SIGNS & MARKERS)
- 701106-02 OFF-RD OPERATIONS, MULTILANE, MORE THAN 15' (4.5m) AWAY

DISTRICT STANDARDS

- 94.2 TRAFFIC CONTROL & PROTECTION AT TURN BAYS (TO REMAIN OPEN TO TRAFFIC)
- 34.1 WORK ZONE SIGN DETAILS

GENERAL NOTES

CLOSED EXPANSION JOINTS ON JOINTED PAVEMENTS SHALL BE RE-ESTABLISHED DURING PATCHING OPERATIONS. CLASS B PATCHES - WHEN THE PAVEMENT REQUIRES PATCHING AT THE LOCATION OF THE EXPANSION JOINT, A NEW JOINT SHOULD BE ESTABLISHED USING A DOWELLED EXPANSION PATCH AS SHOWN ON HIGHWAY STANDARD 442101. WHEN THE JOINT IS CLOSED, BUT DOES NOT REQUIRE PATCHING, AN EXPANSION JOINT MAY BE FORMED BY SAWING THE PAVEMENT AND FILLING THE SAW CUT WITH A PREFORMED EXPANSION JOINT FILLER MEETING THE REQUIREMENTS OF THE SECTION 1051 OF THE STANDARD SPECIFICATIONS AS SHOWN ON STANDARD 420001.

WHEN LAYING OUT FOR PATCHING, THE MINIMUM DISTANCE BETWEEN NEW PATCHES (SAW CUT TO SAW CUT) SHALL BE 15 FEET. WHEN PATCH SPACING IS LESS THAN 15 FEET, THE PAVEMENT BETWEEN PATCHES SHALL ALSO BE REMOVED AND REPLACED.

US 67 STATIONING STARTS AT 3rd AVE 456+67 WHERE BITUMINOUS PAVEMENT ENDS AND PCC PAVEMENT BEGINS. IT CONTINUES AROUND 1st AVE TO THE WEST 400' TO APROX. 468+00. AIRPORT RD STATIONING STARTS WITH STATION 0+17 AT THE CENTERLINE OF US 67 AND AIRPORT RD AND GOES EAST ENDING AT 63+00.

THE RE SHALL CONTACT STEPHANIE McMEEKAN AT (815) 677-5282 FOR PATCHING LAYOUT

MODEL: D2_SHT_INDEX
FILE NAME: I:\GIS\Projects\Operations\Maintenance Section\Stephanie McMeehan\Rock Island\Operations\Contract Maintenance\FY 2024\64S56 Airport rd Patching\CA\SheetIndex_SheetIndex.dgn

USER NAME = Nicholas,Vock	DESIGNED -	REVISED -	STATE OF ILLINOIS DEPARTMENT OF TRANSPORTATION	INDEX OF SHEETS & HIGHWAY STANDARDS	F.A.P. RTE.	SECTION	COUNTY	TOTAL SHEETS	SHEET NO.	
PLOT SCALE = 0.1667" / in.	DRAWN -	REVISED -			310	D2 PP 2024-02	ROCK ISLAND	4	2	
PLOT DATE = 6/22/2023	CHECKED -	REVISED -			CONTRACT NO. 64S56					
	DATE -	REVISED -			SCALE:	SHEET	OF	SHEETS	STA.	TO STA.

US 67 starts @ 3rd st. sta. 456+67 and ends at 468+00 400' W of US 67 and airport rd intersection.															
Airport Rd stationing starts at the centerline intersection of US 67 and Airport rd. sta 0+17															
FIELD INPUT AREA		44200970		44200974		44200976		44213200		44201299		44213204		44200050	
LOCATION	LENGTH OF PATCH		TYPE 1		TYPE 2		TYPE 3		TYPE 4		SAW CUTS (ft)	DOWEL BARS 1 1/2" (each)	TIE BARS (each)	WELDED WIRE REINF. (yd ²)	
	LT LANE (ft)	RT LANE (ft)	LT LANE (yd ²)	RT LANE (yd ²)	LT LANE (yd ²)	RT LANE (yd ²)	LT LANE (yd ²)	RT LANE (yd ²)	LT LANE (yd ²)	RT LANE (yd ²)					
Start sta. 456+67															
US 67 & 3rd st.															
NB															
	10	10	-	-	13.3	13.3	-	-	-	-	122	40	-	-	-
	18	18	-	-	-	-	24.0	24.0	-	-	162	40	-	48.0	-
	10	10	-	-	13.3	13.3	-	-	-	-	122	40	-	-	-
	20	20	-	-	-	-	-	-	26.7	26.7	172	40	9	53.3	-
	10	10	-	-	13.3	13.3	-	-	-	-	122	40	-	-	-
	10	10	-	-	13.3	13.3	-	-	-	-	122	40	-	-	-
	10	10	-	-	13.3	13.3	-	-	-	-	122	40	-	-	-
	10	10	-	-	13.3	13.3	-	-	-	-	122	40	-	-	-
SB															
	10	10	-	-	13.3	13.3	-	-	-	-	122	40	-	-	-
	10	10	-	-	13.3	13.3	-	-	-	-	122	40	-	-	-
	10	10	-	-	13.3	13.3	-	-	-	-	66	20	-	-	-
	10	10	-	-	13.3	13.3	-	-	-	-	66	20	-	-	-
EB/WB															
	10	10	-	-	13.3	13.3	-	-	-	-	66	20	-	-	-
	10	10	-	-	13.3	13.3	-	-	-	-	66	20	-	-	-
End sta. 468+00															
US 67															
Aiport road															
start sta. 0+17															
WB															
	10	10	-	-	13.3	13.3	-	-	-	-	66	20	-	-	-
	10	10	-	-	13.3	13.3	-	-	-	-	66	20	-	-	-
	10	10	-	-	13.3	13.3	-	-	-	-	122	40	-	-	-
	10	10	-	-	13.3	13.3	-	-	-	-	66	20	-	-	-
	10	10	-	-	13.3	13.3	-	-	-	-	122	40	-	-	-
	10	10	-	-	13.3	13.3	-	-	-	-	66	20	-	-	-
	10	10	-	-	13.3	13.3	-	-	-	-	122	40	-	-	-
	10	10	-	-	13.3	13.3	-	-	-	-	66	20	-	-	-
	10	10	-	-	13.3	13.3	-	-	-	-	122	40	-	-	-
	10	10	-	-	13.3	13.3	-	-	-	-	66	20	-	-	-
	10	10	-	-	13.3	13.3	-	-	-	-	122	40	-	-	-
	10	10	-	-	13.3	13.3	-	-	-	-	66	20	-	-	-
	10	10	-	-	13.3	13.3	-	-	-	-	122	40	-	-	-
	10	10	-	-	13.3	13.3	-	-	-	-	66	20	-	-	-
	10	10	-	-	13.3	13.3	-	-	-	-	122	40	-	-	-
	10	10	-	-	13.3	13.3	-	-	-	-	66	20	-	-	-
	10	10	-	-	13.3	13.3	-	-	-	-	122	40	-	-	-
	10	10	-	-	13.3	13.3	-	-	-	-	66	20	-	-	-
	10	10	-	-	13.3	13.3	-	-	-	-	122	40	-	-	-
	10	10	-	-	13.3	13.3	-	-	-	-	66	20	-	-	-
	10	10	-	-	13.3	13.3	-	-	-	-	122	40	-	-	-
	10	10	-	-	13.3	13.3	-	-	-	-	66	20	-	-	-
	10	10	-	-	13.3	13.3	-	-	-	-	122	40	-	-	-
	10	10	-	-	13.3	13.3	-	-	-	-	66	20	-	-	-
	10	10	-	-	13.3	13.3	-	-	-	-	122	40	-	-	-
	10	10	-	-	13.3	13.3	-	-	-	-	66	20	-	-	-
	10	10	-	-	13.3	13.3	-	-	-	-	122	40	-	-	-
	10	10	-	-	13.3	13.3	-	-	-	-	66	20	-	-	-
	10	10	-	-	13.3	13.3	-	-	-	-	122	40	-	-	-
	10	10	-	-	13.3	13.3	-	-	-	-	66	20	-	-	-
	10	10	-	-	13.3	13.3	-	-	-	-	122	40	-	-	-
	10	10	-	-	13.3	13.3	-	-	-	-	66	20	-	-	-
	10	10	-	-	13.3	13.3	-	-	-	-	122	40	-	-	-
	10	10	-	-	13.3	13.3	-	-	-	-	66	20	-	-	-
	10	10	-	-	13.3	13.3	-	-	-	-	122	40	-	-	-
	10	10	-	-	13.3	13.3	-	-	-	-	66	20	-	-	-
	10	10	-	-	13.3	13.3	-	-	-	-	122	40	-	-	-
	10	10	-	-	13.3	13.3	-	-	-	-	66	20	-	-	-
	10	10	-	-	13.3	13.3	-	-	-	-	122	40	-	-	-
	10	10	-	-	13.3	13.3	-	-	-	-	66	20	-	-	-
	10	10	-	-	13.3	13.3	-	-	-	-	122	40	-	-	-
	10	10	-	-	13.3	13.3	-	-	-	-	66	20	-	-	-
	10	10	-	-	13.3	13.3	-	-	-	-	122	40	-	-	-
	10	10	-	-	13.3	13.3	-	-	-	-	66	20	-	-	-
	10	10	-	-	13.3	13.3	-	-	-	-	122	40	-	-	-
	10	10	-	-	13.3	13.3	-	-	-	-	66	20	-	-	-
	10	10	-	-	13.3	13.3	-	-	-	-	122	40	-	-	-
	10	10	-	-	13.3	13.3	-	-	-	-	66	20	-	-	-
	10	10	-	-	13.3	13.3	-	-	-	-	122	40	-	-	-
	10	10	-	-	13.3	13.3	-	-	-	-	66	20	-	-	-
	10	10	-	-	13.3	13.3	-	-	-	-	122	40	-	-	-
	10	10	-	-	13.3	13.3	-	-	-	-	66	20	-	-	-
	10	10	-	-	13.3	13.3	-	-	-	-	122	40	-	-	-
	10	10	-	-	13.3	13.3	-	-	-	-	66	20	-	-	-
	10	10	-	-	13.3	13.3	-	-	-	-	122	40	-	-	-
	10	10	-	-	13.3	13.3	-	-	-	-	66	20	-	-	-
	10	10	-	-	13.3	13.3	-	-	-	-	122	40	-	-	-
	10	10	-	-	13.3	13.3	-	-	-	-	66	20	-	-	-
	10	10	-	-	13.3	13.3	-	-	-	-	122	40	-	-	-
	10	10	-	-	13.3	13.3	-	-	-	-	66	20	-	-	-
	10	10	-	-	13.3	13.3	-	-	-	-	122	40	-	-	-
	10	10	-	-	13.3	13.3	-	-	-	-	66	20	-	-	-
	10	10	-	-	13.3	13.3	-	-	-	-	122	40	-	-	-
	10	10	-	-	13.3	13.3	-	-	-	-	66	20	-	-	-
	10	10	-	-	13.3	13.3	-	-	-	-	122	40	-	-	-
	10	10	-	-	13.3	13.3	-	-	-	-	66	20	-	-	-
	10	10	-	-	13.3	13.3	-	-	-	-	122	40	-	-	-
	10	10	-	-	13.3	13.3	-	-	-	-	66	20	-	-	-
	10	10	-	-	13.3	13.3	-	-	-	-	122	40	-	-	-
	10	10	-	-	13.3	13.3	-	-	-	-	66	20	-	-	-
	10	10	-	-	13.3	13.3	-	-	-	-	122	40	-	-	-
	10	10	-	-	13.3	13.3	-	-	-	-	66	20	-	-	-
	10	10	-	-	13.3	13.3	-	-	-	-	122	40	-	-	-
	10	10	-	-	13.3	13.3	-	-	-	-	66	20	-	-	-
	10	10	-	-	13.3	13.3	-	-	-	-	122	40	-	-	-
	10	10	-	-	13.3	13.3	-	-	-	-	66	20	-	-	-
	10	10	-	-	13.3	13.3	-	-	-	-	122	40	-	-	-
	10	10	-	-	13										