

STATE OF ILLINOIS  
DEPARTMENT OF TRANSPORTATION

F.A.I. RTE.	SECTION	COUNTY	TOTAL SHEETS	SHEET NO.
80	(81-1B)BDR	ROCK ISLAND	20	1
		ILLINOIS	CONTRACT NO. 64S50	

FOR INDEX OF SHEETS, SEE SHEET NO. 2

# PROPOSED HIGHWAY PLANS

FAI ROUTE 80 (I-80)  
SECTION (81-1B)BDR  
BRIDGE REPAIRS  
ROCK ISLAND COUNTY, IL  
SCOTT COUNTY, IA  
NHPP-DYSI(478)  
C-92-099-23

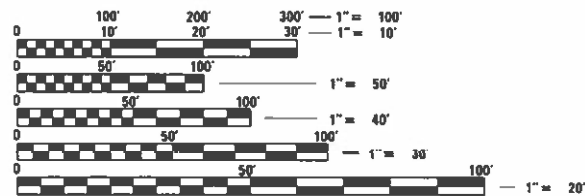
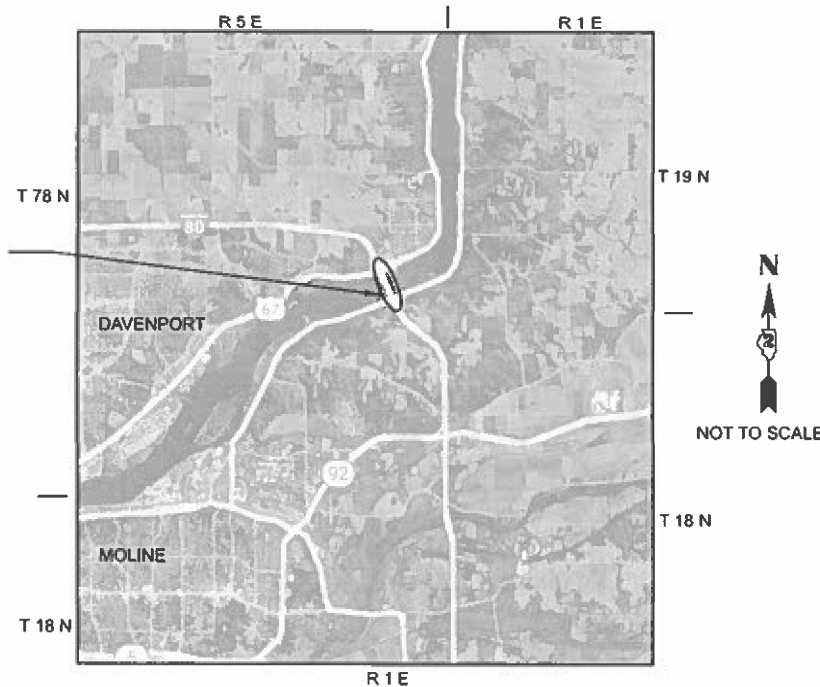


HOWARD J. HAMILTON, P.E. DATE  
LICENSE EXPIRES 11/30/2023  
SHEET RANGE 1 - 15



SCOTT T. WYATT, S.E. DATE  
LICENSE EXPIRES 11/30/2024  
SHEET RANGE 16 - 20

PROJECT LOCATION SN 081-0011  
3488' LONG WITH 12 APPROACH  
AND 16 MAIN SPANS, STRINGER  
AND MULTI-BEAM GIRDERS WITH  
SPREAD FOOTING PIERS & ABUTS  
OVER THE MISSISSIPPI RIVER,  
IL 84, US 67 AND DM&E RR



FULL SIZE PLANS HAVE BEEN PREPARED USING STANDARD  
ENGINEERING SCALES. REDUCED SIZED PLANS WILL NOT  
CONFORM TO STANDARD SCALES. IN MAKING MEASUREMENTS  
ON REDUCED PLANS, THE ABOVE SCALES MAY BE USED.

J.U.L.I.E.  
JOINT UTILITY LOCATION INFORMATION FOR EXCAVATORS  
1-800-892-0123  
OR 811

PROJECT ENGINEER: HOWARD HAMILTON  
PROJECT MANAGER: MAHMOUD ETEMADI

CONTRACT NO. 64S50

GROSS LENGTH = 3488 FT. = 0.661 MILE  
NET LENGTH = 3488 FT. = 0.661 MILE

STATE OF ILLINOIS  
DEPARTMENT OF TRANSPORTATION

SUBMITTED June 26, 2023  
Masoud Ahmed  
REGIONAL ENGINEER

August 18, 2023  
Sal A. Elk  
ENGINEER OF DESIGN AND ENVIRONMENT

August 18, 2023  
Steph M. Smith  
DIRECTOR OF HIGHWAYS PROJECT IMPLEMENTATION

PRINTED BY THE AUTHORITY  
OF THE STATE OF ILLINOIS

**SHEET INDEX**

1. COVER
2. GENERAL NOTES/ CONSTRUCTION SEQUENCE
- 3-4. SUMMARY OF QUANTITIES
5. STAGING TYPICAL SECTION
6. TRAFFIC CONTROL NORTH APPROACH PLAN STAGE 1 & 2
7. MAINTENANCE OF TRAFFIC PLAN STAGE 1
8. MAINTENANCE OF TRAFFIC PLAN STAGE 2
9. TRAFFIC CONTROL SOUTH APPROACH PLAN STAGE 1 & 2
10. REAL TIME TRAFFIC CONTROL SETUP
- 11-13. DISTRICT 2 STANDARD 41.1
14. DISTRICT 2 STANDARD 44.1
15. DISTRICT 2 STANDARD 55.1
16. DECK REPAIR TYPICAL SECTION
- 17-19. DECK REPAIR PLAN AND ELEVATION
20. DECK REPAIRS

**STATE HIGHWAY STANDARDS**

701101-05	OFF ROAD OPERATIONS 15' TO 24" FROM PAVEMENT EDGE
701400-11	APPROACH TO LANE CLOSURE, FREEWAY/EXPRESSWAY
701401-13	LANE CLOSURE, FREEWAY/EXPRESSWAY
701402-12	LANE CLOSURE, FREEWAY/EXPRESSWAY, WITH BARRIER
701411-09	LANE CLOSURE, MULTILANE, AT ENTRANCE OR EXIT RAMP, FOR SPEEDS ≥ 45 MPH
701426-09	LANE CLOSURE, MULTILANE, INTERMITTENT OR MOVING OPER. FOR SPEEDS ≥ 45 MPH
701428-01	TRAFFIC CONTROL, SETUP AND REMOVAL, FREEWAY/EXPRESSWAY
701901-08	TRAFFIC CONTROL DEVICES
704001-08	TEMPORARY CONCRETE BARRIER
780001-05	TYPICAL PAVEMENT MARKINGS
782006-01	GUARDRAIL AND BARRIER WALL REFLECTOR MOUNTING DETAILS

**MAINTENANCE OF TRAFFIC GENERAL NOTES**

1. THE MAINTENANCE OF TRAFFIC CONTROL (MOT) PLANS SHALL SERVE AS A GUIDE FOR SAFE DIVERSION OF TRAFFIC DURING EXECUTION OF THIS CONTRACT. HOWEVER, THE CONTRACTOR MAY MODIFY THE MOT PLANS TO MEET CONSTRUCTION NEEDS, BUT NOT AT THE EXPENSE OF PUBLIC SAFETY OR CONVENIENCE. ANY CHANGES TO THE MOT PLANS SHALL BE SUBMITTED TO THE TRAFFIC CONTROL SUPERVISOR FOR APPROVAL.
2. THE ENGINEER SHALL BE INFORMED 48 HOURS IN ADVANCE OF ANY PROPOSED CHANGE TO THE MOT PLANS.
3. ALL EXISTING SIGNS WITHIN MAINTENANCE OF TRAFFIC LIMITS WHICH ARE OBSCURED BY OR INTERFERE WITH CONSTRUCTION OPERATIONS AND MAINTENANCE OF TRAFFIC, SHALL BE COVERED OR REMOVED BY THE CONTRACTOR UNLESS SPECIFIED IN THE PLANS OR WHEN DIRECTED BY THE ENGINEER. THIS WORK SHALL BE IN ACCORDANCE WITH ARTICLE 107.25 OF THE IDOT STANDARD SPECIFICATIONS.
4. ALL REGULATORY SIGNS MUST REMAIN IF STILL APPLICABLE.
5. A FULL DEPTH SAWCUT WILL BE REQUIRED BETWEEN PAVEMENT, CURB AND/OR GUTTER TO REMAIN AND PAVEMENT, CURB AND/OR GUTTER TO BE REMOVED PRIOR TO BEGINNING OF REMOVAL WORK. COST TO BE INCLUDED WITH APPLICABLE REMOVAL ITEMS.
6. ALIGNMENT AND STATIONING LOCATION SHOWN IS EQUIVALENT TO ORIGINAL CONSTRUCTION SECTION 1-80-8(30) 310 AS FOLLOWS:  
  
ORIGINAL SECTION POT 16+65.49 = CONTRACT SECTION POT STA 116+65.49  
ORIGINAL SECTION POT 51+53.33 = CONTRACT SECTION POT STA 151+53.33  
  
CONTRACT SECTION STATIONING BEYOND THE LIMITS OF THE ORIGINAL SECTION IS ASSUMED TO CONTINUE IN PROGRESSION WITH NO EQUATIONS WITHIN THE MEDIAN PARALLEL TO AND EQUIDISTANT BETWEEN THE MAIN EASTBOUND AND WESTBOUND ROADWAY CENTERLINES.
7. THE CONTRACTOR SHALL CONTACT THE IDOT DISTRICT 2 ENGINEER AT (815)284-2271 A MINIMUM OF 72 HOURS IN ADVANCE OF BEGINNING WORK.

**SUGGESTED MAINTENANCE OF TRAFFIC SEQUENCING**

**STAGE 1**

INSTALL ALL STAGE 1 CONSTRUCTION TRAFFIC CONTROL SIGNS, DRUMS, BARRICADES, TEMPORARY CONCRETE BARRIER, TEMPORARY IMPACT ATTENUATORS, AND TEMPORARY PAVEMENT MARKINGS AS DETAILED IN STAGE 1 PLANS AND APPROPRIATE STANDARD DRAWINGS.

MERGE ALL WESTBOUND TRAFFIC TO THE EXISTING/TEMPORARY INSIDE LANE EAST OF SN 081-0011. MERGE ALL EASTBOUND TRAFFIC TO THE EXISTING/TEMPORARY INSIDE LANE WEST OF SN 081-0011.

COORDINATE WORK TO BE COMPLETED IN THIS STAGE WITH DETAILS IN THE BRIDGE PLANS.

**STAGE 2**

CHANGE STAGE 1 CONSTRUCTION TRAFFIC CONTROL SIGNS, DRUMS, BARRICADES, TEMPORARY CONCRETE BARRIER, TEMPORARY IMPACT ATTENUATORS, AND TEMPORARY PAVEMENT MARKINGS AS NEEDED TO REFLECT STAGE 2 PLANS AND APPROPRIATE STANDARD DRAWINGS.

MERGE ALL WESTBOUND TRAFFIC TO THE EXISTING/TEMPORARY OUTSIDE LANE EAST OF SN 081-0011. MERGE ALL EASTBOUND TRAFFIC TO THE EXISTING/TEMPORARY OUTSIDE LANE WEST OF SN 081-0011.

REMOVE ALL CONFLICTING TRAFFIC CONTROL ITEMS FROM STAGE 1 SETUP.

COORDINATE WORK TO BE COMPLETED IN THIS STAGE WITH DETAILS IN THE BRIDGE PLANS.

**POST STAGE**

REMOVE ALL CONSTRUCTION TRAFFIC CONTROL AND TEMPORARY CONSTRUCTION ITEMS.

REMOVE ANY REMAINING EXISTING TEMPORARY PAVEMENT MARKINGS WITHIN THE PERMANENT PAVEMENT MARKING LIMITS.

INSTALL PERMANENT PAVEMENT MARKINGS.

**SCHEDULE OF PAVEMENT MARKING AND REMOVAL**

STAGE 1											
Item	Location	Station		Offset		Marking 8"		Marking 4"		Marking Removal 4"	
		Begin	End	Min	Max	Permanent	Foot	Permanent	Foot	Permanent	Foot
Remove Mark-Water Blast	Yellow EB & WB Edgeline	115+00	153+00	3' Lt & Rt	3' Lt & Rt					2533	
Remove Mark-Water Blast	White EB Edgeline	115+00	153+00	26' Rt	26' Rt					1267	
Remove Mark-Water Blast	White WB Edgeline	115+50	153+00	26' Lt	31' Lt					1250	
Remove Mark-Water Blast	EB Exit Gore (L=900', W=8')	154+50	158+80	27' Rt	61' Rt					600	
4" White Temp Tape	Eastbound Lane	99+00	109+50	48' Rt	15' Rt				1050		
4" White Temp Tape	Eastbound Entrance Gore	108+20	109+50	36' Rt	15' Rt				130		
4" White Temp Tape	Eastbound Lane & Ramps	109+00	157+20	15' Rt	59' Rt				4820		
4" White Temp Tape	Eastbound Exit Gore	157+20	158+80	27' Rt	61' Rt				160		
4" Yellow Temp Tape	Eastbound Lane	115+00	153+20	3' Rt	2' Rt				3820		
4" Yellow Temp Tape	Westbound Lane	115+00	153+20	3' Rt	2' Rt				3820		
4" White 2' Dash 6' Skip	Westbound Exit Ramp	112+00	115+00	15' Lt	47' Lt				75		
4" White Temp Tape	Westbound Lane & Ramps	115+00	162+80	15' Lt	47' Lt				1195		
4" White Temp Tape	Westbound Entrance Gore	160+80	162+10	15' Lt	28' Lt				130		
4" White Temp Tape	Westbound Lane	160+80	169+20	15' Lt	45' Lt				840		
STAGE 2											
Remove Mark-Water Blast	White EB Edgeline	115+00	153+00	27' Rt	27' Rt					1267	
Remove Mark-Water Blast	White WB Edgeline	115+50	153+00	27' Lt	31' Lt					1250	
Temp Marking Removal	EB Stage 1 White Temp	99+00	109+50	48' Rt	15' Rt						350
Temp Marking Removal	EB Stage 1 Entrance Gore	108+20	109+50	36' Rt	15' Rt						43
Temp Marking Removal	EB Stage 1 White Temp	112+00	115+50	27' Rt	15' Rt						117
Temp Marking Removal	EB Stage 1 White Temp	152+00	155+20	15' Rt	27' Rt						107
Temp Marking Removal	WB Stage 1 White Temp	114+00	116+00	27' Lt	15' Lt						67
Temp Marking Removal	WB Stage 1 White Temp	152+00	159+20	15' Rt	27' Rt						240
Temp Marking Removal	WB Stage 1 Exit Skip Dash	112+00	115+00	15' Lt	47' Lt						25
Temp Marking Removal	WB Stage 1 Entrance Gore	160+80	169+20	45' Lt	15' Lt						280
Temp Marking Removal	WB Stage 1 Entrance Gore	160+80	169+20	45' Lt	15' Lt						280
4" White 2' Dash 6' Skip	Eastbound Entrance Ramp	108+70	115+00	15' Lt	47' Lt				158		
4" White Temp Tape	Eastbound Lane	115+00	152+90	27' Rt	31' Rt				3790		
4" White 2' Dash 6' Skip	Eastbound Exit Ramp	152+90	157+20	15' Lt	47' Lt				108		
4" Yellow Temp Tape	Eastbound Lane	99+00	155+20	3' Rt	22' Rt				5620		
4" White 2' Dash 6' Skip	Westbound Exit Ramp	112+10	115+50	27' Lt	31' Lt				85		
4" White Temp Tape	Westbound Lane	115+50	153+20	27' Lt	27' Lt				3770		
4" White 2' Dash 6' Skip	Westbound Entrance Ramp	153+20	162+00	27' Lt	27' Lt				220		
4" Yellow Temp Tape	Westbound Lane	113+00	169+20	22' Lt	3' Lt				5620		
POST STAGE											
Temp Marking Removal	EB Stage 1 White Temp	115+50	152+00	15' Rt	15' Rt						1217
Temp Marking Removal	EB Stage 1 Yellow Temp	115+00	153+20	14' Rt	15' Rt						1273
Temp Marking Removal	WB Stage 1 White Temp	115+50	152+00	15' Lt	15' Lt						1217
Temp Marking Removal	WB Stage 1 Yellow Temp	115+00	153+20	14' Lt	15' Lt						1273
Temp Marking Removal	EB Ent Ramp White Skip Dash	108+70	115+00	15' Lt	47' Lt						53
Temp Marking Removal	EB Stage 2 White Temp	115+00	152+90	15' Rt	59' Rt						1263
4" White 2' Dash 6' Skip	Eastbound Exit Ramp	152+90	157+20	15' Lt	47' Lt						36
Temp Marking Removal	EB Stage 2 Yellow Temp	99+00	155+20	3' Rt	24' Rt						1873
Temp Marking Removal	WB Exit White Skip Dash	112+10	115+50	27' Lt	31' Lt						28
Temp Marking Removal	WB Stage 2 White Temp	115+50	153+20	15' Lt	47' Lt						1257
Temp Marking Removal	WB Ent Ramp White Skip Dash	153+20	162+00	27' Lt	27' Lt						73
Temp Marking Removal	WB Stage 2 Yellow Temp	113+00	169+20	3' Lt	45' Lt						1873
4" Permanent Marking	EB 4" Yellow Edgeline	109+00	166+50	3' Rt	3' Rt				5750		
4" Permanent Marking	EB CL White Skip-Dash	109+00	166+50	15' Rt	15' Rt				1438		
4" Permanent Marking	EB 4" White Edgeline	109+00	158+80	56' Rt	56' Rt				4980		
8" Permanent Marking	EB 8" White Gore (L=900')	154+50	158+80	27' Rt	61' Rt		900				
4" Permanent Marking	WB 4" Yellow Edgeline	109+00	166+50	3' Lt	3' Lt				5750		
4" Permanent Marking	WB CL White Skip-Dash	109+00	166+50	15' Lt	15' Lt				1438		
4" Permanent Marking	WB 4" White Edgeline	109+00	162+80	27' Lt	43' Lt				5380		
<b>TOTAL</b>						<b>900</b>	<b>24,735</b>	<b>35,411</b>	<b>8,167</b>	<b>12,945</b>	

**SCHEDULE OF TEMP CONCRETE BARRIER AND REFLECTORS**

Location	Station		Temporary Conc Barrier		Reflectors, Ty C (Special)		
	Begin	End	Set Stage 1	Reloc Stage 2	Guardrail Stage 2	Parapet Stage 1	Parapet Stage 2
Eastbound Lanes	115+60	152+00	3638	3638			
Westbound Lanes	116+00	152+40	3638	3638			
SW corner 25' c-c	115+00	116+50			6		
SE corner 25' c-c	151+60	152+50			4		
NE corner 25' c-c	151+60	156+00			18		
Median Top 80' c-c	109+00	166+50				144	
Median EB 80' c-c	109+00	166+50					
Median WB 80' c-c	109+00	166+50					
EB Parapet Rail 80' c-c	116+50	151+60					44
WB Parapet Rail 80' c-c	116+50	151+60					44
<b>TOTAL</b>			<b>7276</b>	<b>7276</b>	<b>28</b>	<b>232</b>	

MODEL Path: F:\Projects\Illinois\22802\201\CAD\22802.dwg  
 FILE NAME: F:\Projects\Illinois\22802\201\CAD\22802.dwg  
 3230 Executive Drive, Joliet, Illinois 60431  
 Ph: (815) 730-3444 Fax: (815) 730-6703  
 IL LICENSE NO. 184-003005  
 © 2020 HAMILTON CONSULTING ENGINEERS, INC.

**HAMILTON CONSULTING ENGINEERS, INC.**

USER NAME = dws	DESIGNED - MOBGB	REVISED -
	DRAWN - MOBGB	REVISED -
PLOT SCALE = 100.0000 / 1 in.	CHECKED -	REVISED -
PLOT DATE = 6/24/2023	DATE -	REVISED -

**STATE OF ILLINOIS DEPARTMENT OF TRANSPORTATION**

**I-80 CROSSING THE MISSISSIPPI RIVER, US 67, IL 84, AND DM&E RR GENERAL NOTES / CONSTRUCTION SEQUENCE**

SCALE: NA SHEET 2 OF 20 SHEETS STA. TO STA.

F.A.I. RTE.	SECTION	COUNTY	TOTAL SHEETS	SHEET NO.
80	(81-B)BDR	ROCK ISLAND	20	2
CONTRACT NO. 64S02				
ILLINOIS FED. AID PROJECT				

# SUMMARY OF QUANTITIES

CODE NO.	ITEM	UNIT	TOTAL QUANTITY	CONSTRUCTION CODE	
				URBAN	
				90% FED 10% STATE	IOWA 100% STATE
				BRIDGE	BRIDGE
				0047	0047
				SN 081-0011	SN 081-0011
67100100	MOBILIZATION	L SUM	1	0.5	0.5
70100205	TRAFFIC CONTROL AND PROTECTION, STANDARD 701401	EACH	2	1	1
70100207	TRAFFIC CONTROL AND PROTECTION, STANDARD 701402	EACH	2	1	1
70100420	TRAFFIC CONTROL AND PROTECTION, STANDARD 701411	EACH	4	2	2
70106700	TEMPORARY RUMBLE STRIPS	EACH	6	3	3
70107025	CHANGEABLE MESSAGE SIGN	CAL DA	60	30	30
70300150	SHORT TERM PAVEMENT MARKING REMOVAL	SO FT	13,534	6,767	6,767
70307120	TEMPORARY PAVEMENT MARKING - LINE 4" - TYPE IV TAPE	FOOT	36,220	18,110	18,110
70400100	TEMPORARY CONCRETE BARRIER	FOOT	7,264	3,632	3,632
70400125	PINNING TEMPORARY CONCRETE BARRIER	EACH	126	63	63
70400200	RELOCATE TEMPORARY CONCRETE BARRIER	FOOT	7,264	3,632	3,632
70600250	IMPACT ATTENUATORS, TEMPORARY (NON- REDIRECTIVE), TEST LEVEL 3	EACH	2	1	1
70600350	IMPACT ATTENUATORS, RELOCATE (NON- REDIRECTIVE), TEST LEVEL 3	EACH	2	1	1
* 78009004	MODIFIED URETHANE PAVEMENT MARKING LINE 4"	FOOT	24,736	12,368	12,368

\*= SPECIALTY ITEM

MODEL: Default  
 FILE NAME: C:\Users\scottw\Desktop\WO 1 - I-80\Summary\BDR\64S50-SUMMARY-QUANTITIES-001.dwg  
 PLOT DATE: 7/17/2023

**HAMILTON CONSULTING ENGINEERS, INC.**  
 3230 Executive Drive, Joliet, Illinois 60431  
 Ph: (815) 730-3444 Fax: (815) 730-6703  
 IL LICENSE NO. 184-003205  
 © 2020 HAMILTON CONSULTING ENGINEERS, INC.

USER NAME = scottw	DESIGNED - MGB	REVISED -
PLOT SCALE = 2,000' / in.	DRAWN - MGB	REVISED -
PLOT DATE = 7/17/2023	CHECKED -	REVISED -
	DATE -	REVISED -

DESIGNED - MGB	REVISED -
DRAWN - MGB	REVISED -
CHECKED -	REVISED -
DATE -	REVISED -

**STATE OF ILLINOIS  
 DEPARTMENT OF TRANSPORTATION**

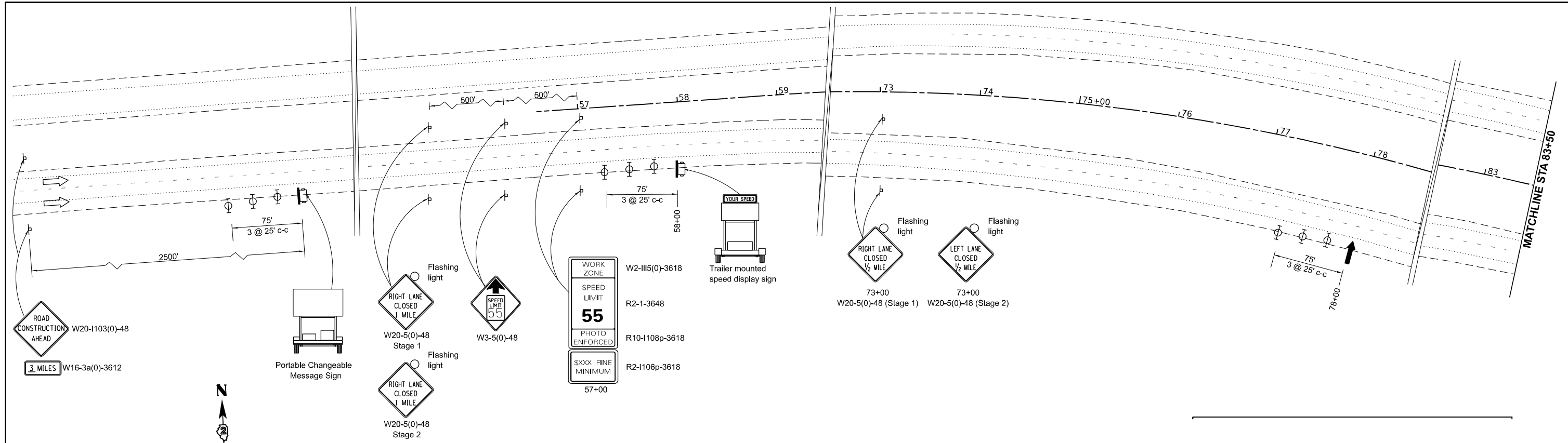
**I-80 CROSSING THE MISSISSIPPI RIVER, US 67, IL 84, AND DM&E RR  
 SUMMARY OF QUANTITIES**

SCALE: NA      SHEET 3 OF 18 SHEETS      STA.      TO STA.

F.A.I. RTE.	SECTION	COUNTY	TOTAL SHEETS	SHEET NO.
80	(81-1B)BDR	ROCK ISLAND	18	3
CONTRACT NO. 64S50				
ILLINOIS FED. AID PROJECT				

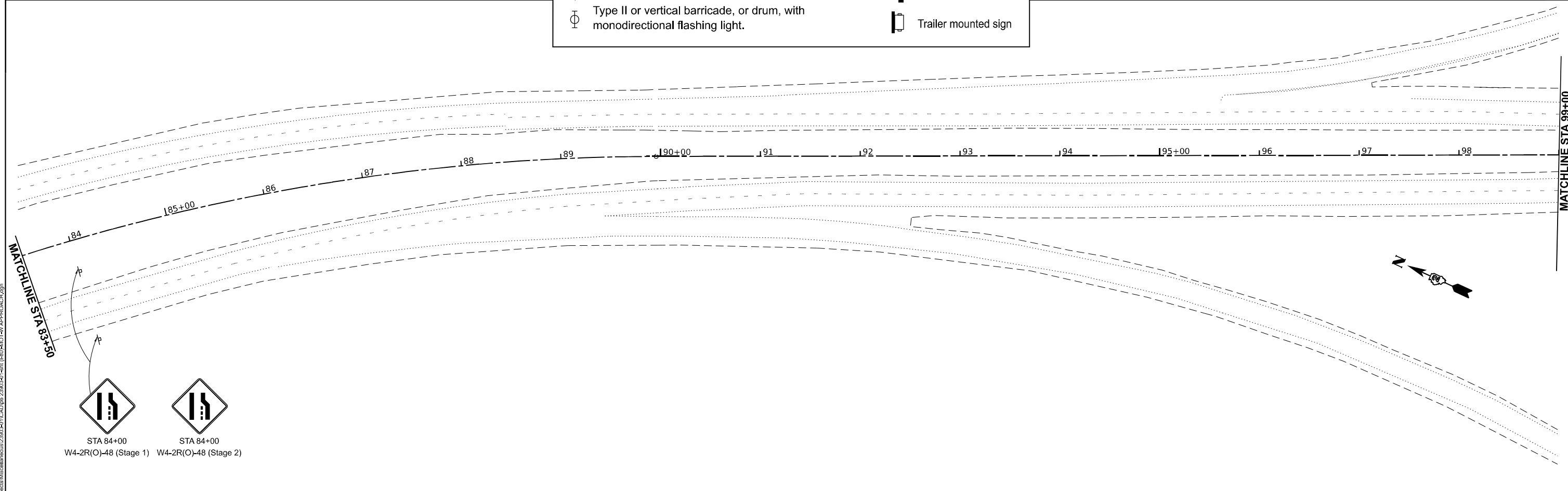






**SYMBOLS**

<p>⌋ Sign</p> <p>⊕ Type II or vertical barricade, or drum, with monodirectional flashing light.</p>	<p>↑ Arrow board.</p> <p>🚛 Trailer mounted sign</p>
---	---



**HAMILTON CONSULTING ENGINEERS, INC.**  
 3230 Executive Drive, Joliet, Illinois 60431  
 Ph: (815) 736-3444 Fax: (815) 736-6703  
 License No. 184-002025  
 © 2020 HAMILTON CONSULTING ENGINEERS, INC.

USER NAME = dws
PLOT SCALE = 100,0000' / in.
PLOT DATE = 6/24/2023

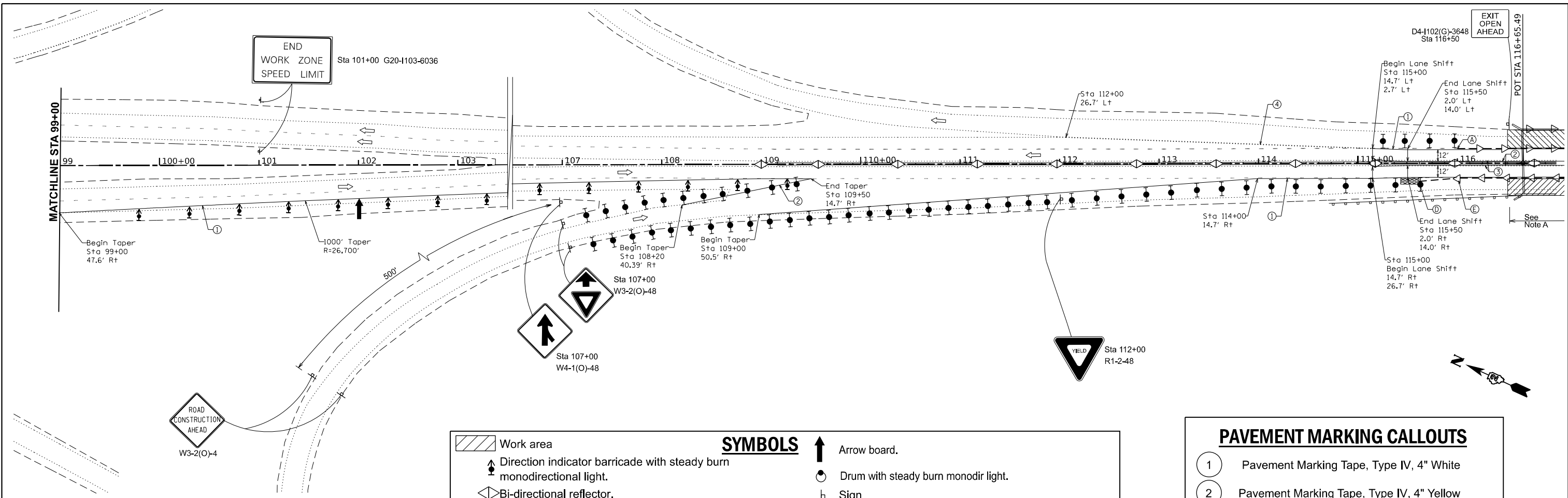
DESIGNED - MGB	REVISED -
DRAWN - MGB	REVISED -
CHECKED -	REVISED -
DATE -	REVISED -

**STATE OF ILLINOIS  
DEPARTMENT OF TRANSPORTATION**

**I-80 CROSSING THE MISSISSIPPI RIVER, US 67, IL 84, AND DM&E RR  
TRAFFIC CONTROL NORTH APPROACH PLAN STAGE 1 & 2**

SCALE: 1"=50'      SHEET 6 OF 20 SHEETS      STA. 99+00      TO STA. 169+20

F.A.I. RTE.	SECTION	COUNTY	TOTAL SHEETS	SHEET NO.
80	(81-1)BDR	ROCK ISLAND	20	6
CONTRACT NO. 64S50				
ILLINOIS FED. AID PROJECT				



**SYMBOLS**

- Work area
- Arrow board.
- Direction indicator barricade with steady burn monodirectional light.
- Drum with steady burn monodir light.
- Bi-directional reflector.
- Sign
- Monodirectional reflector.
- Type II or vertical barricade, or drum, with steady burn monodirectional light.
- Temp. concrete barrier.
- Temporary impact attenuator, non-redirective, test level 3.

**PAVEMENT MARKING CALLOUTS**

- 1 Pavement Marking Tape, Type IV, 4" White
- 2 Pavement Marking Tape, Type IV, 4" Yellow
- 3 Pavement Marking Removal-Water Blasting
- 4 Pvt Mk Tape, Type IV, 4" White 2' Dash 6' Skip

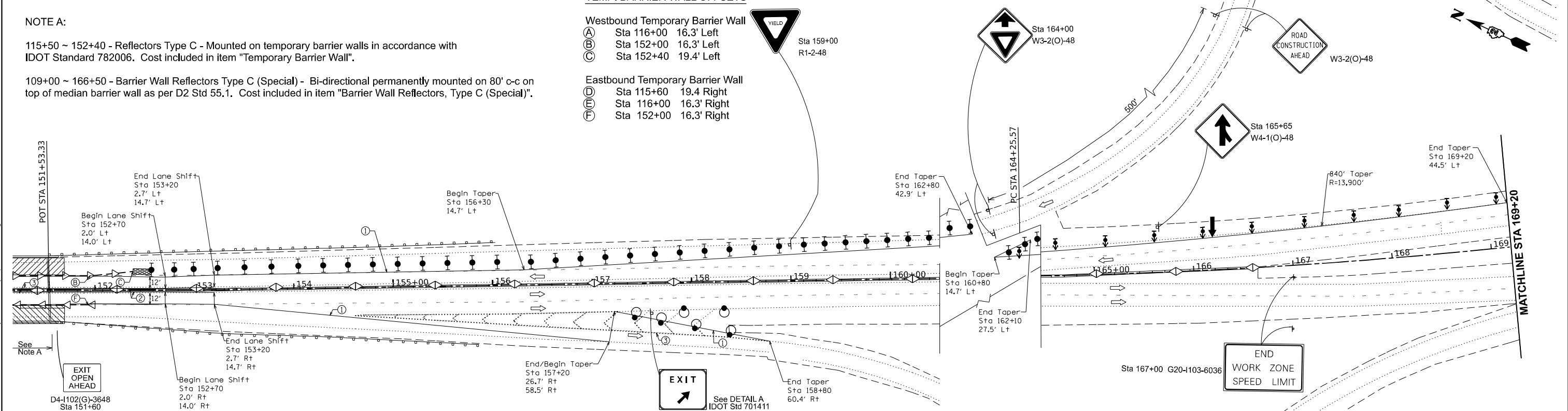
**NOTE A:**

115+50 ~ 152+40 - Reflectors Type C - Mounted on temporary barrier walls in accordance with IDOT Standard 782006. Cost included in item "Temporary Barrier Wall".

109+00 ~ 166+50 - Barrier Wall Reflectors Type C (Special) - Bi-directional permanently mounted on 80' c-c on top of median barrier wall as per D2 Std 55.1. Cost included in item "Barrier Wall Reflectors, Type C (Special)".

**TEMP. BARRIER WALL OFFSETS**

Station	Offset
<b>Westbound Temporary Barrier Wall</b>	
(A) Sta 116+00	16.3' Left
(B) Sta 152+00	16.3' Left
(C) Sta 152+40	19.4' Left
<b>Eastbound Temporary Barrier Wall</b>	
(D) Sta 115+60	19.4' Right
(E) Sta 116+00	16.3' Right
(F) Sta 152+00	16.3' Right



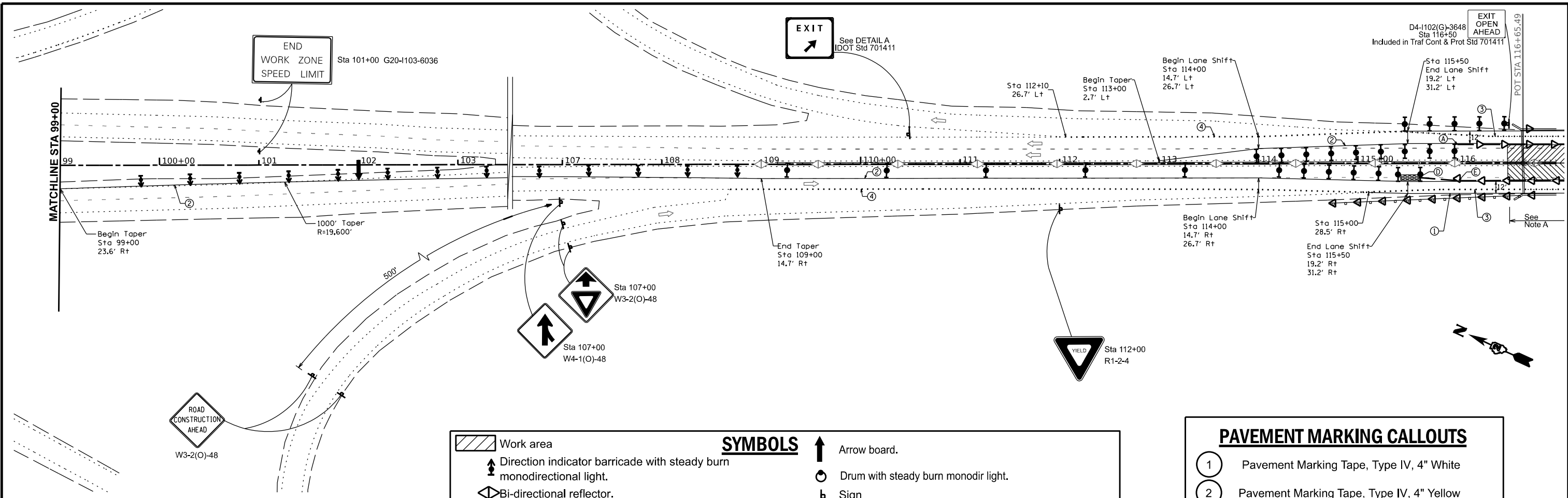
**HAMILTON CONSULTING ENGINEERS, INC.**  
 3230 Executive Drive, Joliet, Illinois 60431  
 Ph: (815) 730-3444 Fax: (815) 730-6703  
 License No. 184-002005  
 © 2020 HAMILTON CONSULTING ENGINEERS, INC.

USER NAME = dws	DESIGNED - MGB	REVISED -
PLOT SCALE = 100,0000 / in.	DRAWN - MGB	REVISED -
PLOT DATE = 6/24/2023	CHECKED -	REVISED -
	DATE -	REVISED -

**STATE OF ILLINOIS DEPARTMENT OF TRANSPORTATION**

**I-80 CROSSING THE MISSISSIPPI RIVER, US 67, IL 84, AND DM&E RR TRAFFIC CONTROL STAGE 1 PLAN**  
 SCALE: 1"=50' SHEET 7 OF 20 SHEETS STA. 99+00 TO STA. 169+20

F.A.I. RTE. 80	SECTION (81-B)BDR	COUNTY ROCK ISLAND	TOTAL SHEETS 20	SHEET NO. 7
CONTRACT NO. 64S50				
ILLINOIS FED. AID PROJECT				



**SYMBOLS**

	Work area		Arrow board.
	Direction indicator barricade with steady burn monodirectional light.		Drum with steady burn monodirectional light.
	Bi-directional reflector.		Sign
	Monodirectional reflector.		Type II or vertical barricade, or drum, with steady burn monodirectional light.
	Temporary impact attenuator, non-redirective, test level 3.		Temp. concrete barrier.

**PAVEMENT MARKING CALLOUTS**

①	Pavement Marking Tape, Type IV, 4" White
②	Pavement Marking Tape, Type IV, 4" Yellow
③	Pavement Marking Removal-Water Blasting
④	Pvt Mk Tape, Type IV, 4" White 2' Dash 6' Skip

**NOTE A:**

115+00 ~ 116+50 - Guardrail Reflectors Type C - Monodirectional permanently mounted on southwest bridge corner guardrail on 25' c-c as per D2 Std 55.1. Cost included in item "Guardrail Reflectors, Type C (Special)".

115+50 ~ 152+40 - Reflectors Type C - Mounted on temporary barrier walls in accordance with IDOT Standard 782006. Cost included in item "Temporary Barrier Wall".

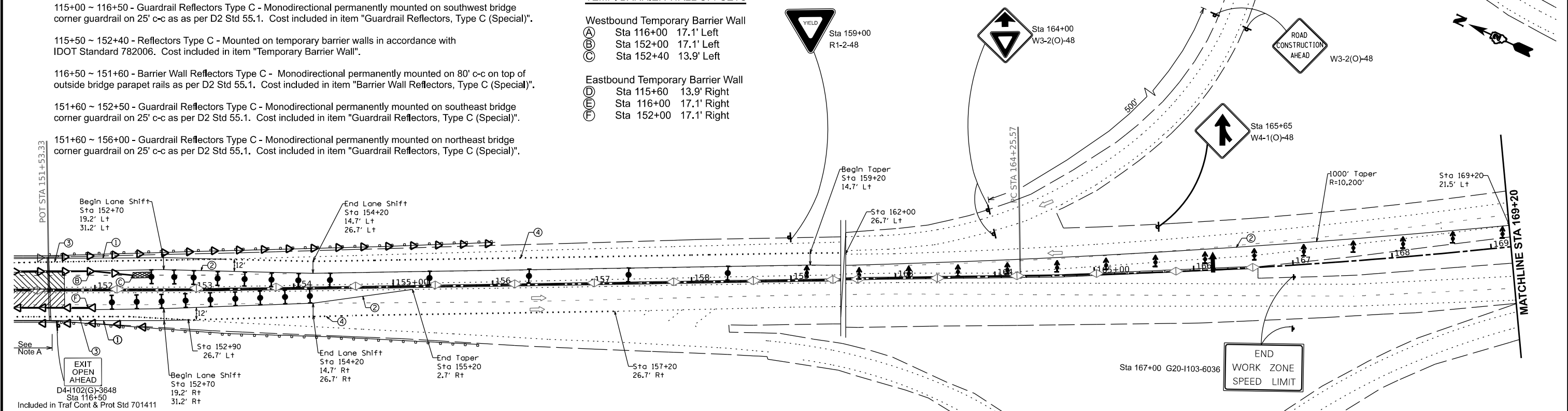
116+50 ~ 151+60 - Barrier Wall Reflectors Type C - Monodirectional permanently mounted on 80' c-c on top of outside bridge parapet rails as per D2 Std 55.1. Cost included in item "Barrier Wall Reflectors, Type C (Special)".

151+60 ~ 152+50 - Guardrail Reflectors Type C - Monodirectional permanently mounted on southeast bridge corner guardrail on 25' c-c as per D2 Std 55.1. Cost included in item "Guardrail Reflectors, Type C (Special)".

151+60 ~ 156+00 - Guardrail Reflectors Type C - Monodirectional permanently mounted on northeast bridge corner guardrail on 25' c-c as per D2 Std 55.1. Cost included in item "Guardrail Reflectors, Type C (Special)".

**TEMP. BARRIER WALL OFFSETS**

- Westbound Temporary Barrier Wall
- (A) Sta 116+00 17.1' Left
  - (B) Sta 152+00 17.1' Left
  - (C) Sta 152+40 13.9' Left
- Eastbound Temporary Barrier Wall
- (D) Sta 115+60 13.9' Right
  - (E) Sta 116+00 17.1' Right
  - (F) Sta 152+00 17.1' Right



HAMILTON CONSULTING ENGINEERS, INC.  
 3230 Executive Drive, Joliet, Illinois 60431  
 Ph: (815) 730-3444 Fax: (815) 730-6703  
 LICENSE NO. 184-003005  
 © 2020 HAMILTON CONSULTING ENGINEERS, INC.

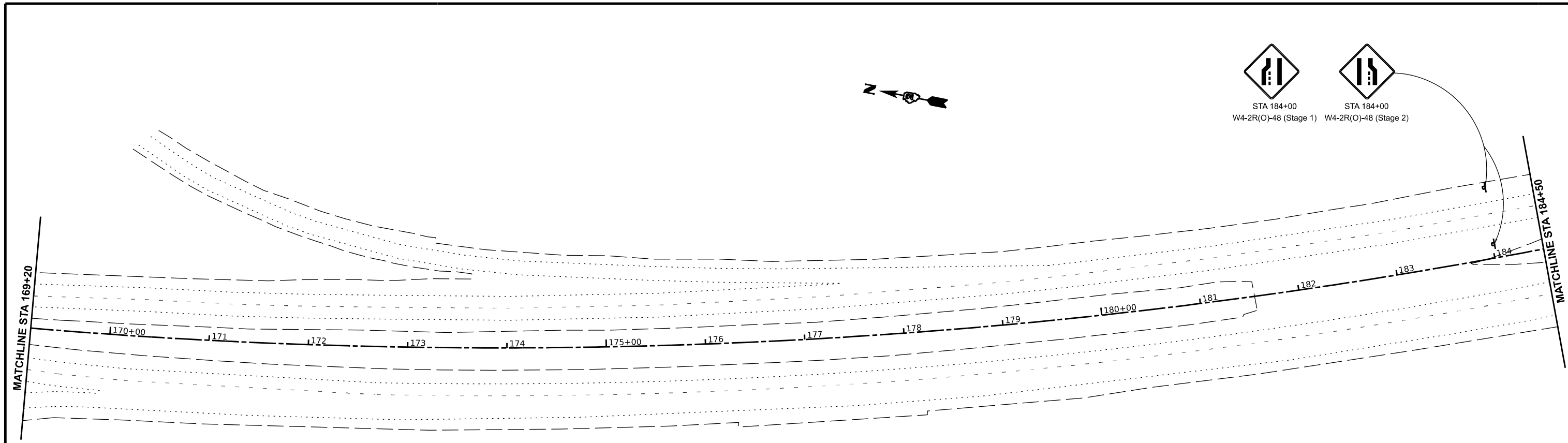
USER NAME = \$USERS	DESIGNED - MGB	REVISED -
PLOT SCALE = \$SCALE\$	DRAWN - MGB	REVISED -
PLOT DATE = \$DATES	CHECKED -	REVISED -
	DATE -	REVISED -

STATE OF ILLINOIS  
 DEPARTMENT OF TRANSPORTATION

I-80 CROSSING THE MISSISSIPPI RIVER, US 67, IL 84, AND DM&E RR  
 TRAFFIC CONTROL STAGE 2 PLAN  
 SCALE: 1"=50'  
 SHEET 8 OF 20 SHEETS  
 STA. 99+00 TO STA. 169+20

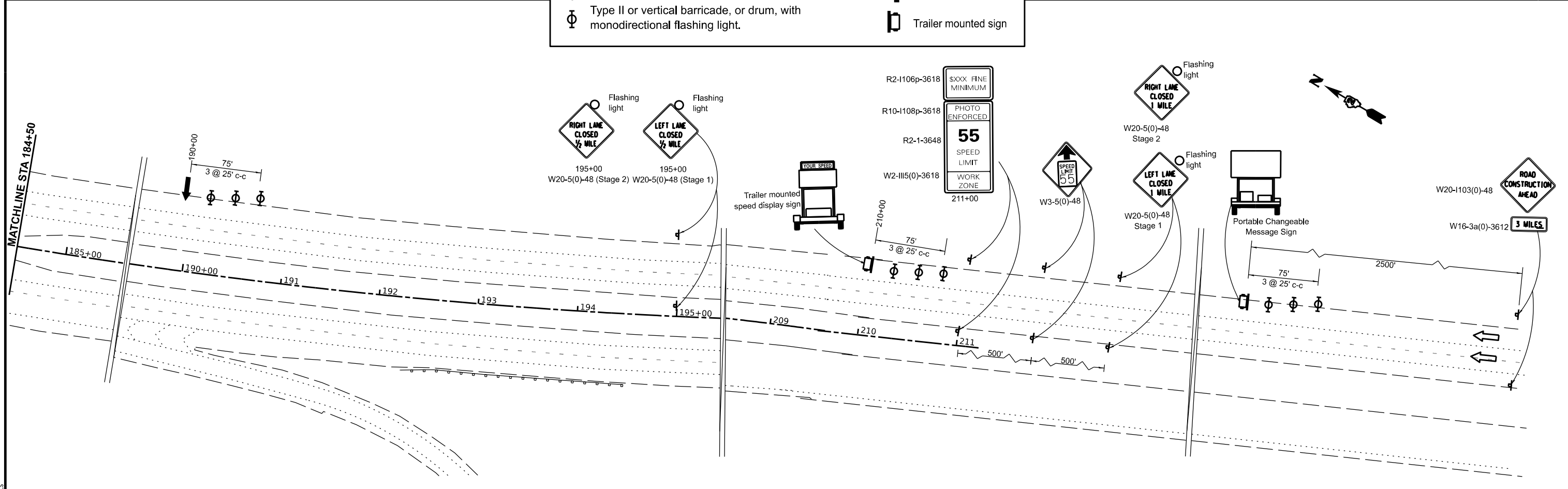
F.A.I. RTE.	SECTION	COUNTY	TOTAL SHEETS	SHEET NO.
80	(81-1B)BDR	ROCK ISLAND	20	8
CONTRACT NO. 64S0				
ILLINOIS FED. AID PROJECT				





**SYMBOLS**

<p>⊣ Sign</p> <p>⊕ Type II or vertical barricade, or drum, with monodirectional flashing light.</p>	<p>↑ Arrow board.</p> <p>⊞ Trailer mounted sign</p>
---	---



HAMILTON CONSULTING ENGINEERS, INC.  
 3230 Executive Drive, Joliet, Illinois 60431  
 Ph: (815) 730-3444 Fax: (815) 730-6703  
 LICENSE NO. 184-003005  
 © 2020 HAMILTON CONSULTING ENGINEERS, INC.

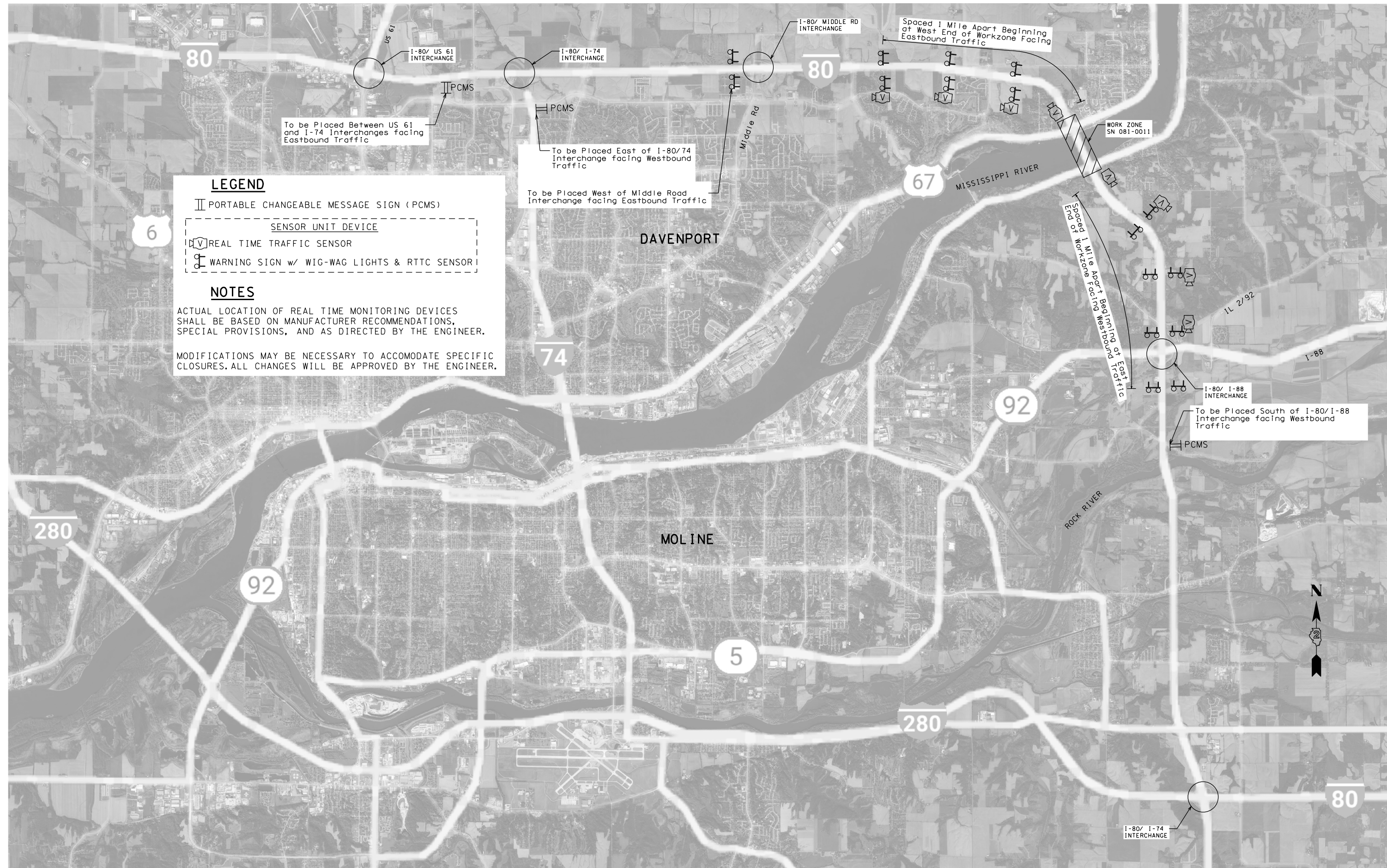
USER NAME = \$USERS	DESIGNED - MGB	REVISED -	
	DRAWN - MGB	REVISED -	
PLOT SCALE = \$\$SCALE\$	CHECKED -	REVISED -	
PLOT DATE = \$DATES	DATE -	REVISED -	

**STATE OF ILLINOIS  
DEPARTMENT OF TRANSPORTATION**

**I-80 CROSSING THE MISSISSIPPI RIVER, US 67, IL 84, AND DM&E RR  
TRAFFIC CONTROL STAGE 1 & 2 SOUTH APPROACH PLAN**

SCALE: 1"=50'    SHEET 9 OF 20 SHEETS    STA. 99+00    TO STA. 169+20

F.A.I. RTE.	SECTION	COUNTY	TOTAL SHEETS	SHEET NO.
80	(81-1B)BDR	ROCK ISLAND	20	9
CONTRACT NO. 64S50				
ILLINOIS FED. AID PROJECT				



**LEGEND**

II PORTABLE CHANGEABLE MESSAGE SIGN (PCMS)

SENSOR UNIT DEVICE

REAL TIME TRAFFIC SENSOR

WARNING SIGN w/ WIG-WAG LIGHTS & RTTC SENSOR

**NOTES**

ACTUAL LOCATION OF REAL TIME MONITORING DEVICES SHALL BE BASED ON MANUFACTURER RECOMMENDATIONS, SPECIAL PROVISIONS, AND AS DIRECTED BY THE ENGINEER.

MODIFICATIONS MAY BE NECESSARY TO ACCOMMODATE SPECIFIC CLOSURES. ALL CHANGES WILL BE APPROVED BY THE ENGINEER.

To be Placed Between US 61 and I-74 Interchanges facing Eastbound Traffic

To be Placed East of I-80/74 Interchange facing Westbound Traffic

To be Placed West of Middle Road Interchange facing Eastbound Traffic

Spaced 1 Mile Apart Beginning at West End of Workzone Facing Eastbound Traffic

WORK ZONE SN 081-0011

Spaced 1 Mile Apart Beginning at East End of Workzone Facing Westbound Traffic

To be Placed South of I-80/I-88 Interchange facing Westbound Traffic

HAMILTON CONSULTING ENGINEERS, INC.  
 3230 Executive Drive, Joliet, Illinois 60431  
 Ph: (815) 730-3444 Fax: (815) 730-6703  
 LICENSE NO. 184-003005  
 © 2020 HAMILTON CONSULTING ENGINEERS, INC.

USER NAME = \$USERS	DESIGNED - MGB	REVISED -
PLOT SCALE = \$SCALE\$	DRAWN - MGB	REVISED -
PLOT DATE = \$DATES	CHECKED -	REVISED -
	DATE -	REVISED -

**STATE OF ILLINOIS  
 DEPARTMENT OF TRANSPORTATION**

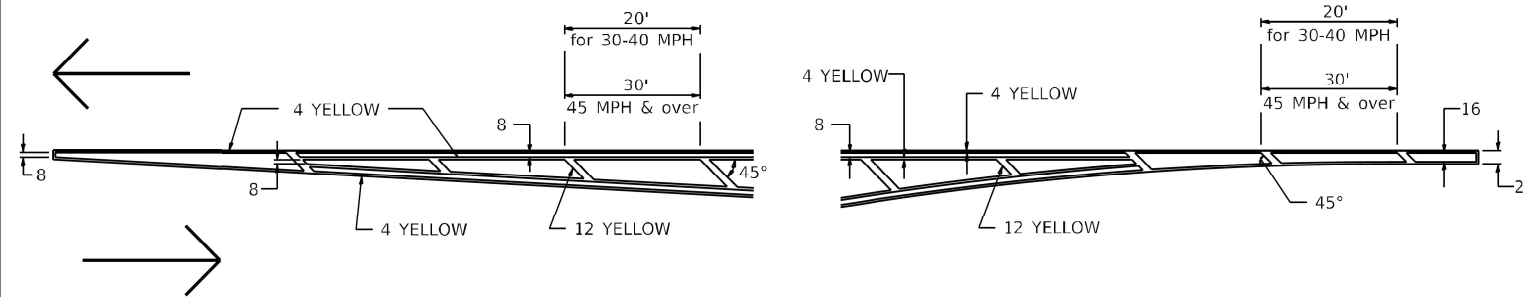
**I-80 CROSSING THE MISSISSIPPI RIVER, US 67, IL 84, AND DM&E RR  
 REAL TIME TRAFFIC CONTROL SETUP**

SCALE: 1"=0.5 MILE SHEET 10 OF 20 SHEETS STA. TO STA.

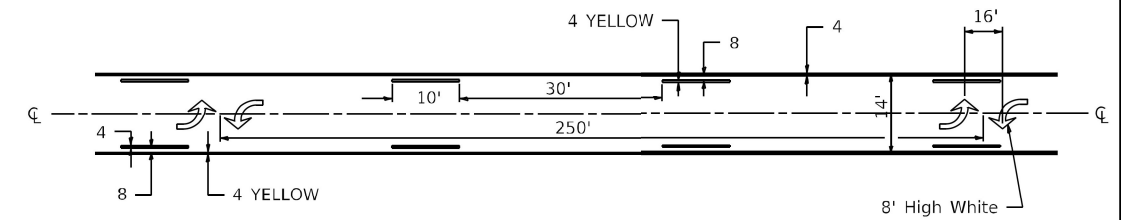
F.A.I. RTE.	SECTION	COUNTY	TOTAL SHEETS	SHEET NO.
80	(81-1B)BDR	ROCK ISLAND	20	10
CONTRACT NO. 64S50				
ILLINOIS FED. AID PROJECT				

# TYPICAL PAVEMENT MARKINGS

## TYPICAL PAVEMENT MARKING FOR FLUSH MEDIAN AT LEFT TURN LANE

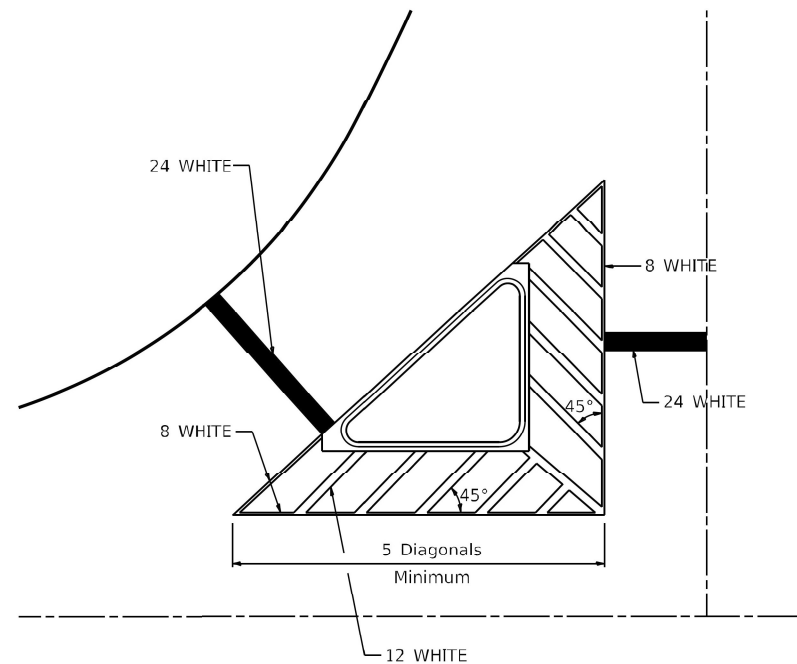


## MEDIAN PAVEMENT MARKING



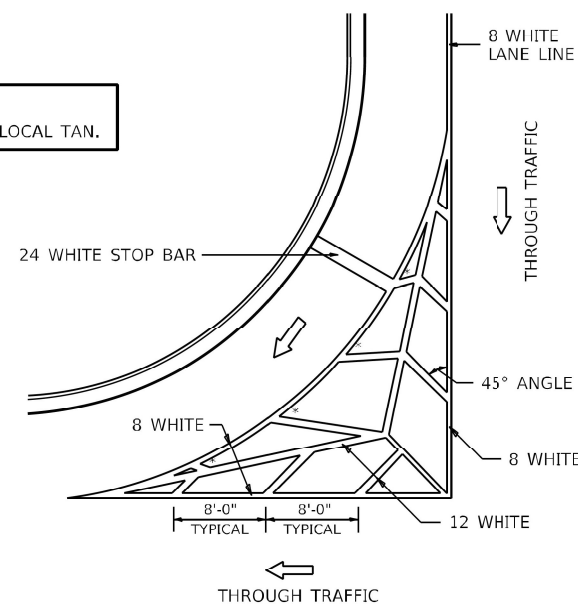
\*\* ALL DIMENSIONS ARE IN INCHES UNLESS OTHERWISE NOTED.

## TYPICAL ISLAND OFFSET SHOULDER WIDTH



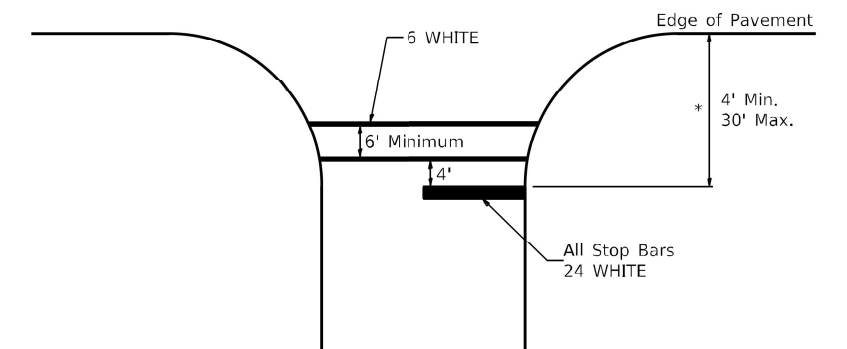
## TYPICAL MARKING FOR PAINTED ISLANDS

NOTE:  
\* 45° TO LOCAL TAN.



## STANDARD CROSSWALK MARKING

See Schedules for Locations



\* Distance to the nearest edge of the intersecting roadway in the absence of a marked crosswalk.

FILE NAME: C:\Projects\02standards\Standards.cel	USER NAME = james.hogerson	DESIGNED -	REVISED - 6-27-14
		DRAWN -	REVISED - 3-05-12
	PLOT SCALE = 3.0909 ' / in.	CHECKED -	REVISED -
	PLOT DATE = 5/17/2023	DATE -	REVISED -

STATE OF ILLINOIS  
DEPARTMENT OF TRANSPORTATION

REGION 2 / DISTRICT 2 STANDARD

SCALE: SHEET 1 OF 3 SHEETS STA. TO STA.

F.A. RTE.	SECTION	COUNTY	TOTAL SHEETS	SHEET NO.
CONTRACT NO.				
ILLINOIS FED. AID PROJECT				

TYPICAL PAVEMENT MARKINGS SHEET 1 OF 3 41.1

MODEL, SYMBOL NAMES  
FILE NAME, STYLE

USER NAME = \$USERS	DESIGNED - MGB	REVISED -
	DRAWN - MGB	REVISED -
PLOT SCALE = \$\$SCALE\$	CHECKED -	REVISED -
PLOT DATE = \$DATES	DATE -	REVISED -

STATE OF ILLINOIS  
DEPARTMENT OF TRANSPORTATION

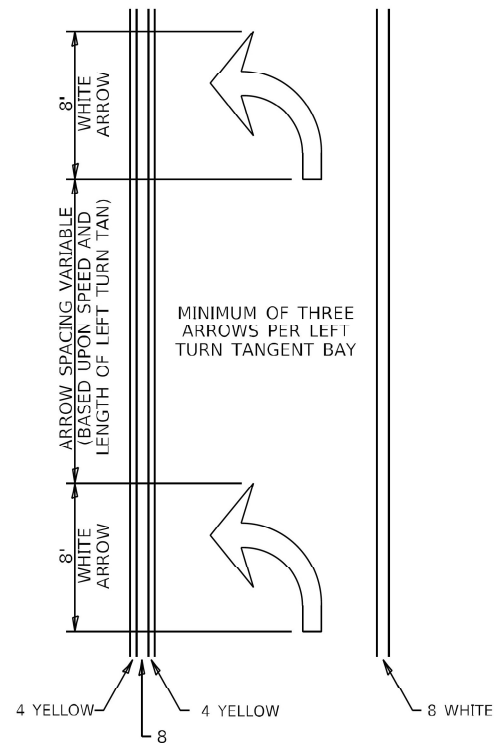
I-80 CROSSING THE MISSISSIPPI RIVER, US 67, IL 84, AND DM&E RR  
DISTRICT 2 STANDARD 41.1

SCALE: NTS SHEET 11 OF 20 SHEETS STA. TO STA.

F.A. RTE.	SECTION	COUNTY	TOTAL SHEETS	SHEET NO.
80	(81-1B)BDR	ROCK ISLAND	20	11
CONTRACT NO. 64S50				
ILLINOIS FED. AID PROJECT				

# TYPICAL PAVEMENT MARKINGS

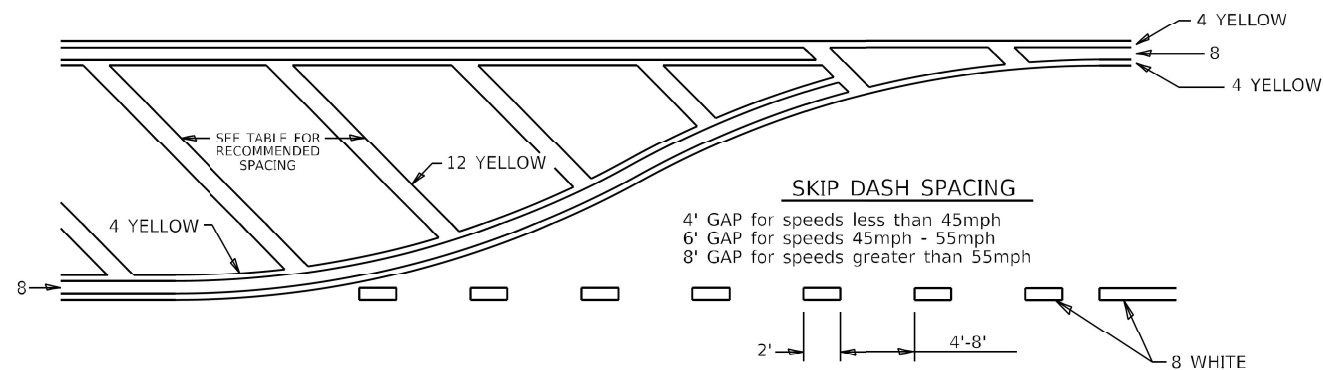
## ARROW LAYOUT



- ◁ ONE-WAY AMBER MARKER
- ◁ ONE-WAY CRYSTAL MARKER
- ◇ TWO-WAY AMBER MARKER

ALL DIMENSIONS ARE IN INCHES UNLESS OTHERWISE NOTED.

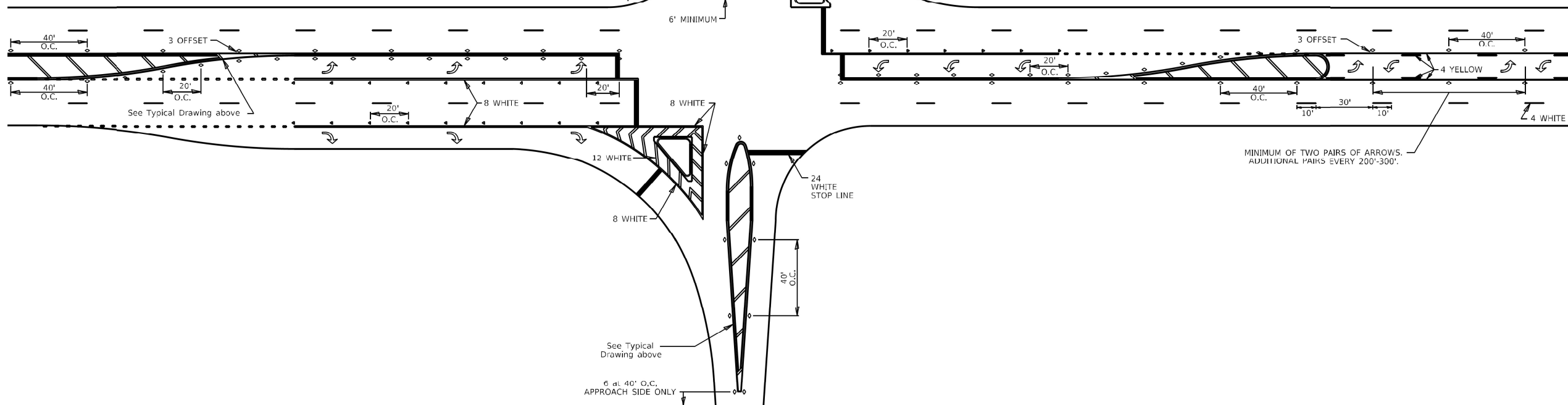
## TYPICAL PAVEMENT MARKING FOR FLUSH MEDIAN



### RECOMMENDED SPACING BETWEEN DIAGONALS (IN FEET)

Speed Limit Range	Continuous Median Area	Intersection Channelization	Objects (Islands)
less than 30MPH	50'	15'	10'
30-40MPH	75'	20'	15'
45MPH & over	75'	30'	20'

NOTE: if the spacing recommended in the Table does not permit at least five diagonal lines in the area being marked, the spacing from the next lowest speed range should be used. The recommended spacing is measured parallel to the pavement center line.

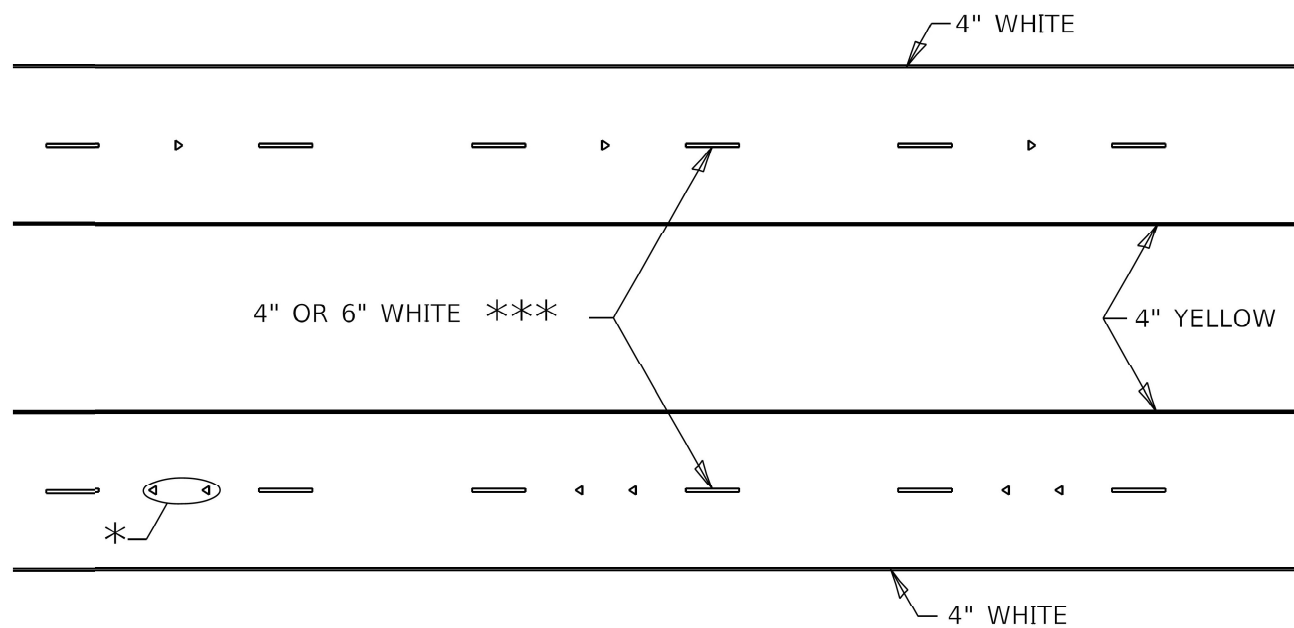


FILE NAME: C:\Projects\SD2\std\D25Standards.cad	USER NAME = james.hogerson	DESIGNED -	REVISED - 6-27-14	<b>STATE OF ILLINOIS DEPARTMENT OF TRANSPORTATION</b>	<b>REGION 2 / DISTRICT 2 STANDARD</b>	F.A.I. RTE.	SECTION	COUNTY	TOTAL SHEETS	SHEET NO.	
	PLOT SCALE = 3.0909" / in.	DRAWN - MGB	REVISED - 3-05-12			CONTRACT NO.					
	PLOT DATE = 5/17/2013	CHECKED -	REVISED -			ILLINOIS FED. AID PROJECT					
		DATE -	REVISED -			SCALE: SHEET 2 OF 3 SHEETS STA. TO STA.					

## TYPICAL PAVEMENT MARKINGS SHEET 2 OF 3 41.1

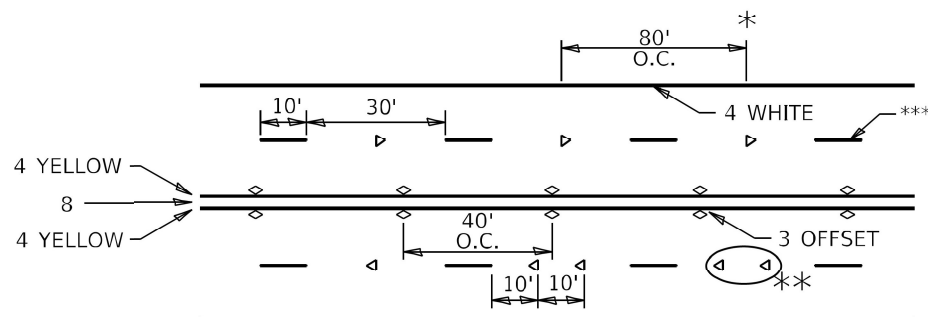
USER NAME = \$USERS	DESIGNED - MGB	REVISED -	<b>STATE OF ILLINOIS DEPARTMENT OF TRANSPORTATION</b>	<b>I-80 CROSSING THE MISSISSIPPI RIVER, US 67, IL 84, AND DM&amp;E RR DISTRICT 2 STANDARD 41.1</b>	F.A.I. RTE.	SECTION	COUNTY	TOTAL SHEETS	SHEET NO.	
	DRAWN - MGB	REVISED -			CONTRACT NO. 64S50					
	PLOT SCALE = \$SCALE\$	CHECKED -			ILLINOIS FED. AID PROJECT					
	PLOT DATE = \$DATE\$	DATE -			SCALE: NTS SHEET 12 OF 20 SHEETS STA. TO STA.					

# TYPICAL PAVEMENT MARKINGS



\* SEE HIGHWAY STANDARD 781001 FOR SPACING DETAILS.  
USE DOUBLE MARKERS WHEN ADT ≥ 20,000.

## MULTI-LANE / DIVIDED



\* REDUCE TO 40' O.C. ON CURVES WHERE ADVISORY SPEEDS ARE 10 MPH LOWER THAN POSTED SPEEDS.

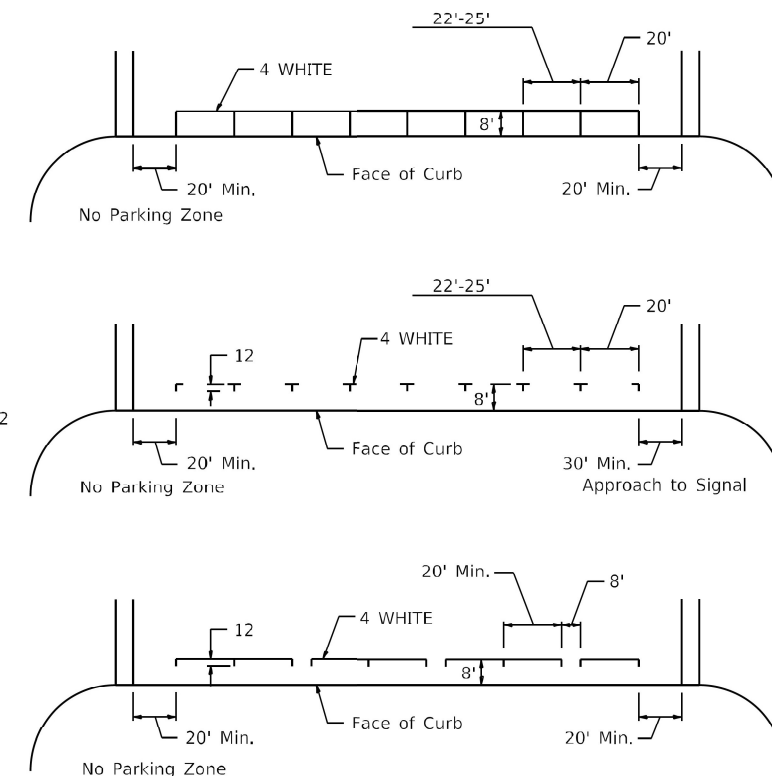
\*\* USE DOUBLE MARKERS WHEN ADT ≥ 20,000

\*\*\* CENTERLINE SKIP DASH PAVEMENT MARKING SPEED LIMIT LESS THAN 40 MPH USE 4" LINE. SPEED LIMIT 40 MPH AND OVER USE 6" LINE.

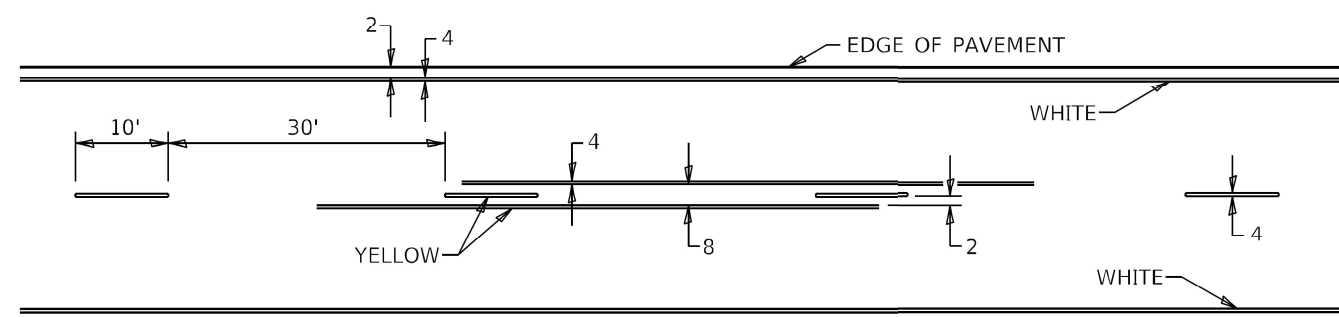
## MULTI-LANE / UNDIVIDED & ONE WAY

(FOR MULTI-LANE UNDIVIDED HIGHWAYS USE THIS DETAIL NOT HIGHWAY STANDARD 781001)

## TYPICAL PARKING SPACING



## TYPICAL PAVEMENT MARKING FOR TWO LANE SECTION - NO PASSING ZONES



## SYMBOLS

FILE NAME: C:\Projects\02\stds\02Standards.cel	USER NAME = james.hogerson	DESIGNED -	REVISED - 6-27-14	<b>STATE OF ILLINOIS DEPARTMENT OF TRANSPORTATION</b>	<b>REGION 2 / DISTRICT 2 STANDARD</b>	F.A.I. RTE.	SECTION	COUNTY	TOTAL SHEETS	SHEET NO.	
	PLOT SCALE = 3.0909' / in.	DRAWN -	REVISED - 8-27-13			SCALE:	SHEET 3 OF 3 SHEETS	STA.	TO STA.	ILLINOIS	FED. AID PROJECT
	PLOT DATE = 5/17/2023	CHECKED -	REVISED - 11-28-12			CONTRACT NO.					
		DATE -	REVISED -			CONTRACT NO.					

## TYPICAL PAVEMENT MARKINGS SHEET 3 OF 3 41.1

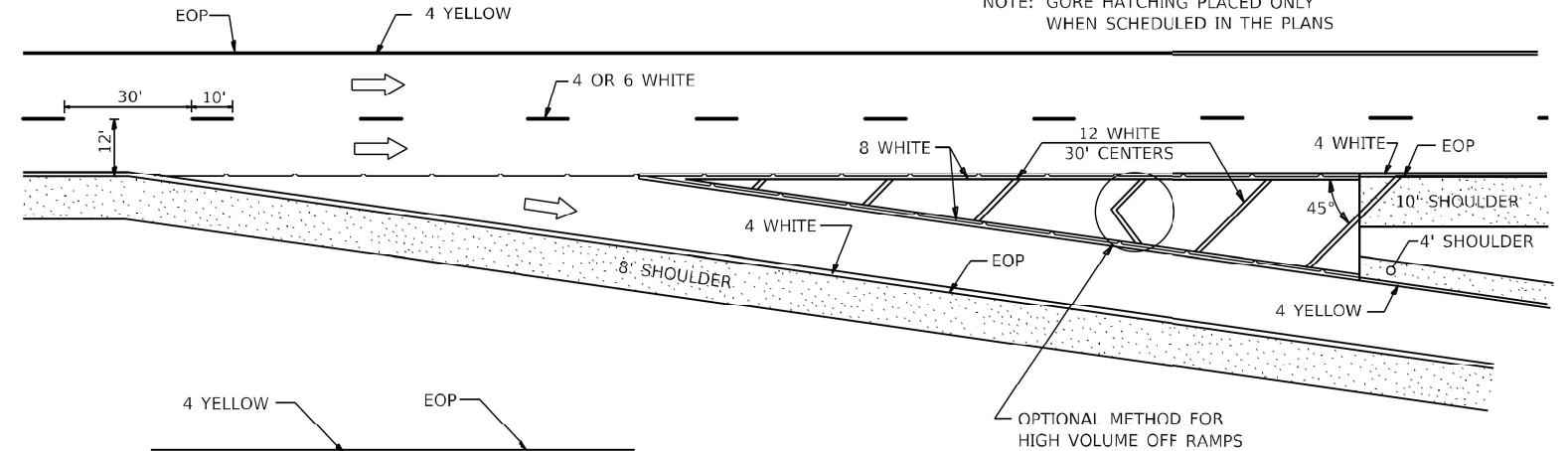
USER NAME = \$USERS	DESIGNED - MGB	REVISED -	<b>STATE OF ILLINOIS DEPARTMENT OF TRANSPORTATION</b>	<b>I-80 CROSSING THE MISSISSIPPI RIVER, US 67, IL 84, AND DM&amp;E RR DISTRICT 2 STANDARD 41.1</b>	F.A.I. RTE.	SECTION	COUNTY	TOTAL SHEETS	SHEET NO.	
	DRAWN - MGB	REVISED -			SCALE: NTS	SHEET 13 OF 20 SHEETS	STA.	TO STA.	ILLINOIS	FED. AID PROJECT
	CHECKED -	REVISED -			CONTRACT NO. 64S50					
	DATE -	REVISED -			CONTRACT NO. 64S50					

# PAINING DETAILS

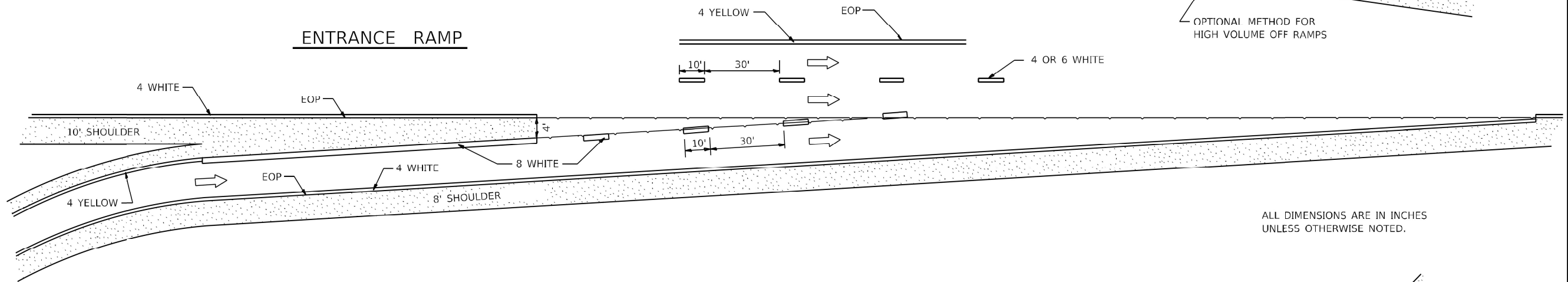
## EXIT RAMP

NOTE: GORE HATCHING PLACED ONLY WHEN SCHEDULED IN THE PLANS

CENTERLINE SKIP DASH PAVEMENT MARKING WIDTH SHALL BE 4" WHEN THE POSTED SPEED LIMIT IS UNDER 40 MPH AND 6" WHEN THE POSTED SPEED LIMIT IS 40 MPH AND OVER.

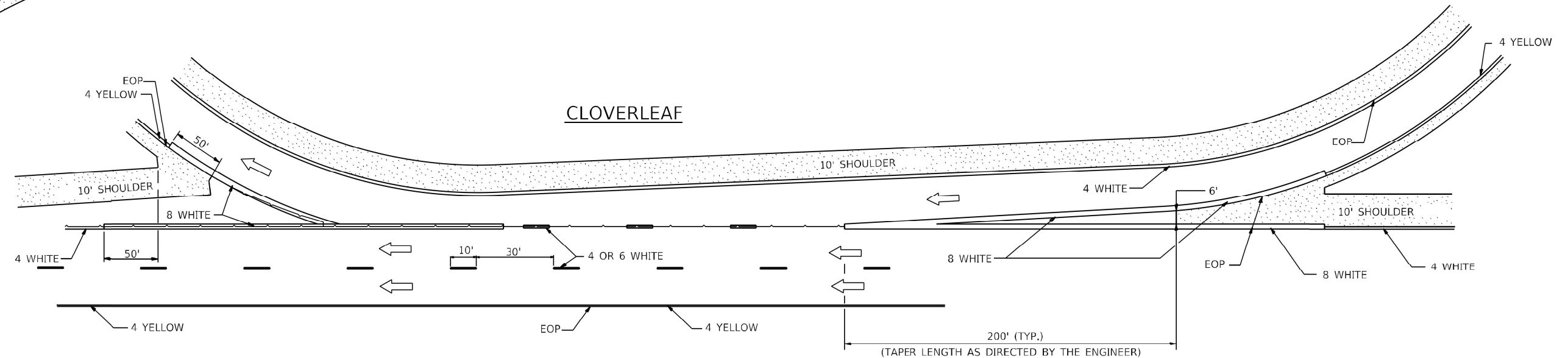


## ENTRANCE RAMP



ALL DIMENSIONS ARE IN INCHES UNLESS OTHERWISE NOTED.

## CLOVERLEAF



FILE NAME: C:\Projects\02\std\02Standards.cpl	USER NAME = James.Jorgerson	DESIGNED -	REVISED - 8-27-13	STATE OF ILLINOIS DEPARTMENT OF TRANSPORTATION	REGION 2 / DISTRICT 2 STANDARD			F.A. RTE.	SECTION	COUNTY	TOTAL SHEETS	SHEET NO.
	PLOT SCALE = 3.0909' / in.	DRAWN -	REVISED - 10-18-11		SCALE:	SHEET	OF	SHEETS	STA.	TO STA.	ILLINOIS	FED. AID PROJECT
	PLOT DATE = 5/17/2023	CHECKED -	REVISED -		CONTRACT NO.							
	DATE -	REVISED -										

### PAINING DETAILS 44.1

MODEL, SCALE, DIMENSIONS, FILE NAMES, SHEETS

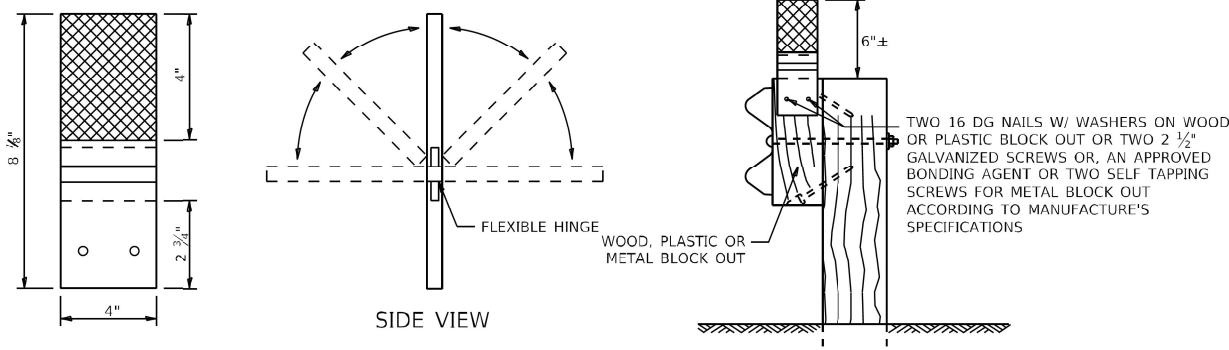
<b>HAMILTON CONSULTING ENGINEERS, INC.</b> 3230 Executive Drive, Joliet, Illinois 60431 Ph: (815) 730-3444 Fax: (815) 730-6703 LICENSE NO. 184-003005 © 2020 HAMILTON CONSULTING ENGINEERS, INC.	USER NAME = \$USERS	DESIGNED - MGB	REVISED -
	PLOT SCALE = \$SCALE\$	DRAWN - MGB	REVISED -
	PLOT DATE = \$DATE\$	CHECKED -	REVISED -
	DATE -	REVISED -	

<b>STATE OF ILLINOIS DEPARTMENT OF TRANSPORTATION</b>	
---	--

<b>I-80 CROSSING THE MISSISSIPPI RIVER, US 67, IL 84, AND DM&amp;E RR DISTRICT 2 STANDARD 44.1</b>	
SCALE: <b>NTS</b>	SHEET 14 OF 20 SHEETS STA. TO STA.

F.A. RTE.	SECTION	COUNTY	TOTAL SHEETS	SHEET NO.
80	(81-1B)BDR	ROCK ISLAND	20	14
CONTRACT NO. 64S50				
ILLINOIS FED. AID PROJECT				

# GUARDRAIL AND BARRIER WALL REFLECTORS, TYPE C (SPECIAL)

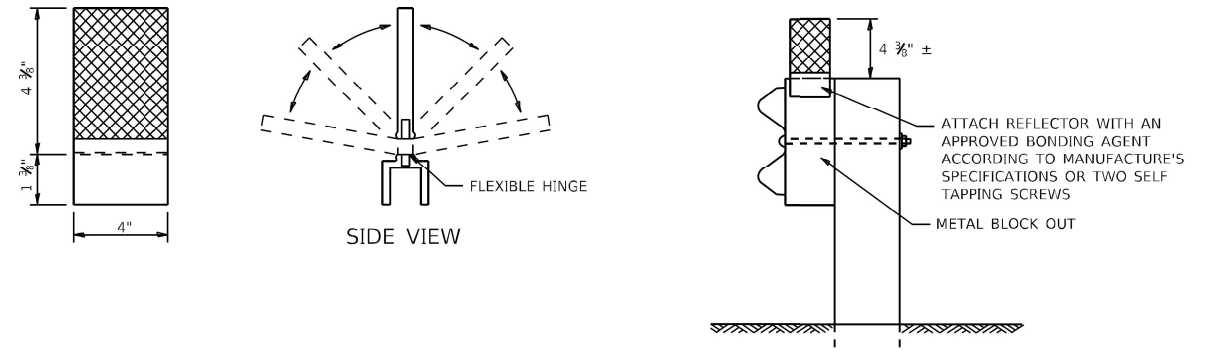


REFLECTORS SHALL BE MOUNTED DIRECTLY TO WOOD OR PLASTIC BLOCK OUTS.

REFLECTORS MOUNTED ON WOODEN OR PLASTIC BLOCK OUT SHALL BE MOUNTED USING TWO 16 DG NAILS AND TWO 3/16" WASHERS OR TWO 2 1/2" GALVANIZED SCREWS WITH WASHERS.

**MOUNTED ON A WOOD OR PASTIC GUARDRAIL BLOCK OUT**

## REFLECTORS MOUNTED ON WOOD OR PLASTIC GUARDRAIL BLOCK OUT

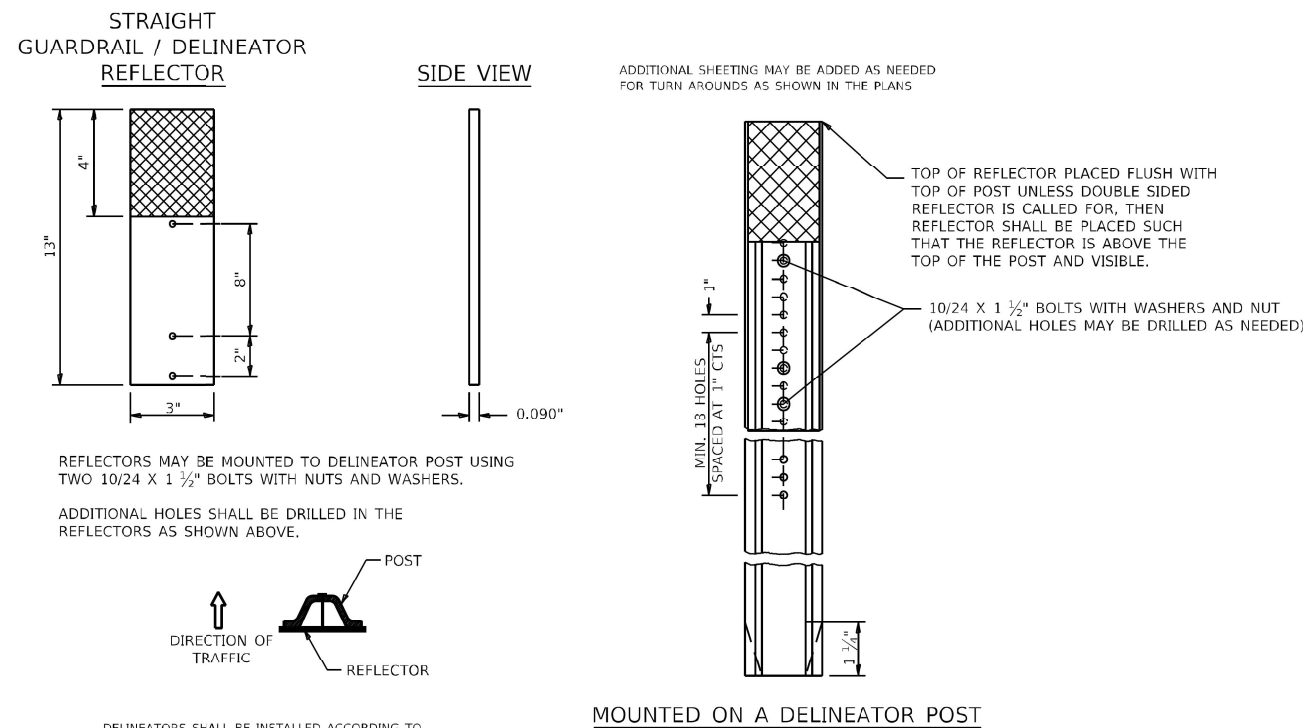


REFLECTORS SHALL BE MOUNTED DIRECTLY TO METAL BLOCK OUT.

REFLECTORS MOUNTED ON METAL BLOCK OUT SHALL BE MOUNTED USING AN APPROVED BONDING AGENT PER THE MANUFACTURE'S SPECIFICATIONS OF TWO SELF TAPPING GALVANIZED SCREWS WITH WASHERS.

**MOUNTED ON A METAL GUARDRAIL BLOCK OUT**

## REFLECTORS MOUNTED ON METAL GUARDRAIL BLOCK OUT

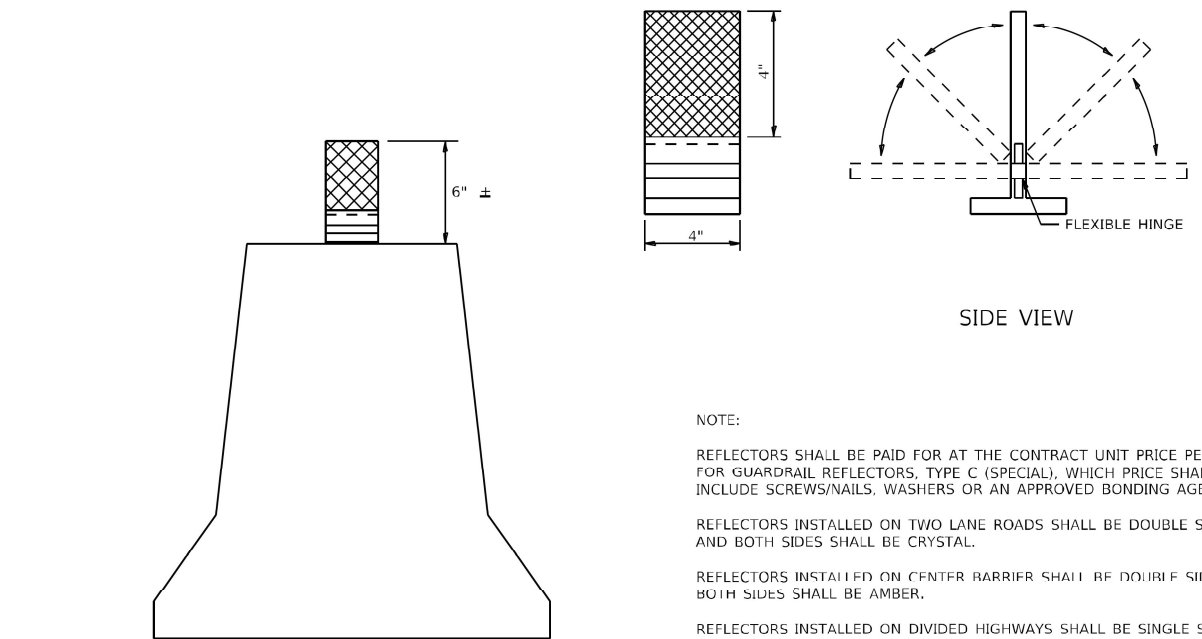


REFLECTORS MAY BE MOUNTED TO DELINEATOR POST USING TWO 10/24 X 1 1/2" BOLTS WITH NUTS AND WASHERS.

ADDITIONAL HOLES SHALL BE DRILLED IN THE REFLECTORS AS SHOWN ABOVE.

DELINEATORS SHALL BE INSTALLED ACCORDING TO STANDARD 635001 EXCEPT THAT THE POST SHALL BE ROTATED 180°. THE POST WILL HAVE THE WIDE SIDE FACING TRAFFIC AND THE REFLECTOR ATTACHED AS SHOWN ABOVE.

**MOUNTED ON A DELINEATOR POST**



NOTE:

REFLECTORS SHALL BE PAID FOR AT THE CONTRACT UNIT PRICE PER EACH FOR GUARDRAIL REFLECTORS, TYPE C (SPECIAL), WHICH PRICE SHALL ALSO INCLUDE SCREWS/NAILS, WASHERS OR AN APPROVED BONDING AGENT.

REFLECTORS INSTALLED ON TWO LANE ROADS SHALL BE DOUBLE SIDED AND BOTH SIDES SHALL BE CRYSTAL.

REFLECTORS INSTALLED ON CENTER BARRIER SHALL BE DOUBLE SIDED AND BOTH SIDES SHALL BE AMBER.

REFLECTORS INSTALLED ON DIVIDED HIGHWAYS SHALL BE SINGLE SIDED CRYSTAL.

SPACING FOR REFLECTORS SHALL BE ACCORDING TO STANDARD 782006 UNLESS OTHERWISE NOTED IN THE PLANS.

## REFLECTORS MOUNTED ON BARRIER WALL

FILE NAME: C:\Projects\02\std\02Standards.cel	USER NAME = james.hegerson	DESIGNED -	REVISED - 4-27-23
		DRAWN -	REVISED - 6-21-21
	PLOT SCALE = 3.0909' / in.	CHECKED -	REVISED -
	PLOT DATE = 5/17/2023	DATE -	REVISED -

**STATE OF ILLINOIS  
DEPARTMENT OF TRANSPORTATION**

REGION 2 / DISTRICT 2 STANDARD

F.A. RTE.	SECTION	COUNTY	TOTAL SHEETS	SHEET NO.
CONTRACT NO.				
ILLINOIS FED. AID PROJECT				

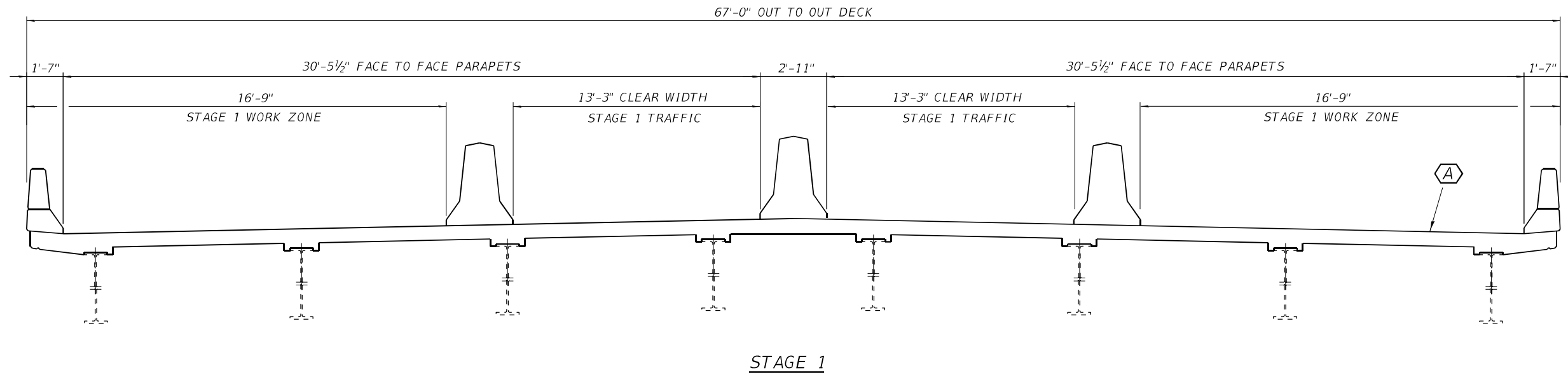
## GUARDRAIL AND BARRIER WALL REFLECTORS, TYPE C (SPECIAL) 55.1

USER NAME = \$USERS	DESIGNED - MGB	REVISED -
	DRAWN - MGB	REVISED -
PLOT SCALE = \$\$SCALE\$	CHECKED -	REVISED -
PLOT DATE = \$DATE\$	DATE -	REVISED -

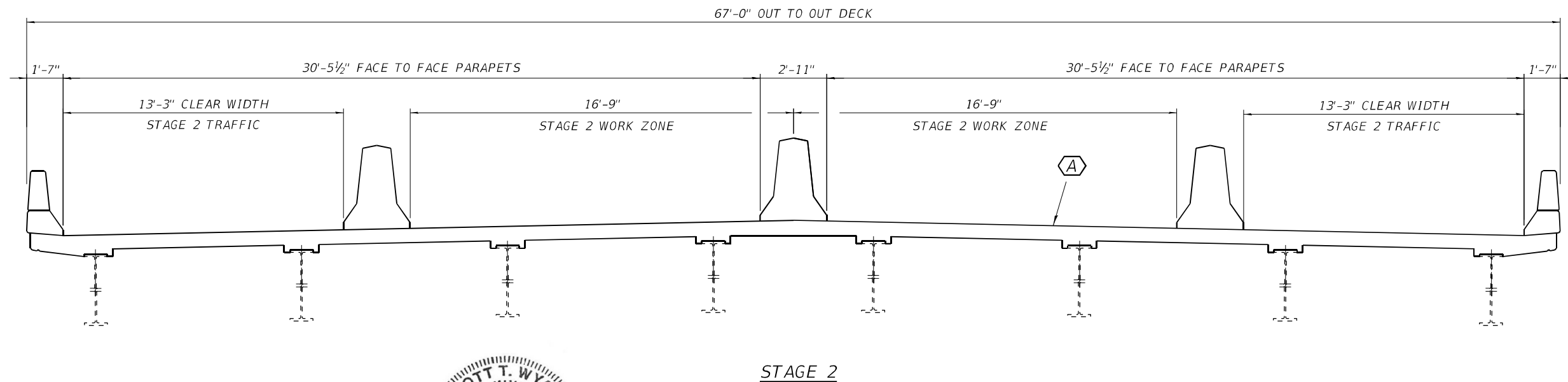
**STATE OF ILLINOIS  
DEPARTMENT OF TRANSPORTATION**

**I-80 CROSSING THE MISSISSIPPI RIVER, US 67, IL 84, AND DM&E RR  
DISTRICT 2 STANDARD 55.1**

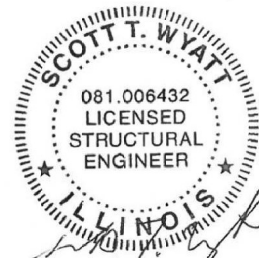
F.A. RTE.	SECTION	COUNTY	TOTAL SHEETS	SHEET NO.
80	(81-1B)BDR	ROCK ISLAND	20	15
CONTRACT NO. 64S50				
ILLINOIS FED. AID PROJECT				



STAGE 1



STAGE 2



SCOPE OF WORK

(A) - Deck Slab Repair (Partial)

6-23-23  
Exp. 11-30-24

TOTAL BILL OF MATERIAL

ITEM	UNIT	QUANTITY
Deck Slab Repair (Partial)	Sq. Yd.	1315

GENERAL NOTES

The Structure Number shall remain SN 081-0011.  
Plan dimensions and details relative to the existing plans are subject to nominal construction variations. The Contractor shall field verify existing dimensions and details affecting new construction and make necessary approved adjustments prior to construction or ordering materials. Such variations shall not be cause for additional compensation for a change in scope of the work, however, the Contractor will be paid for the quantity actually furnished at the unit price bid for the work.  
Traffic will be maintained using staged construction.

MODEL: Default  
FILE NAME: \kpf\com\dis\Bldg\2300240 (WO 1-80 64S50)02\_Design (MS)1-80 64S50 - Typ Sec.dgn  
6/23/2023 7:22:17 AM



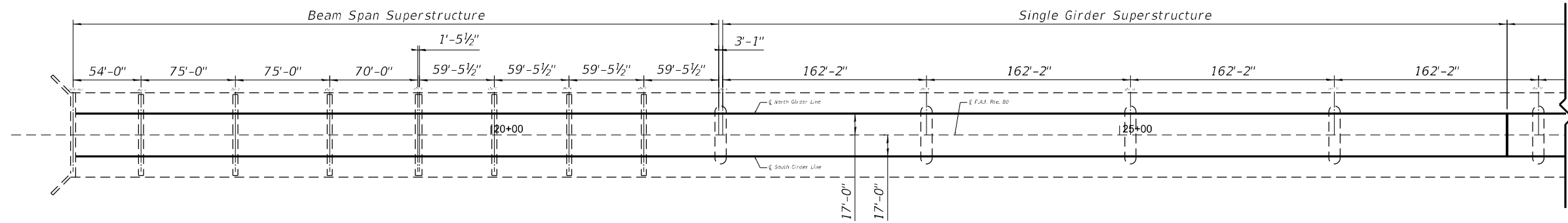
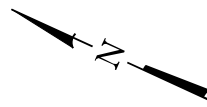
USER NAME =	DESIGNED -	REVISED -
PLOT SCALE =	CHECKED -	REVISED -
PLOT DATE =	DRAWN -	REVISED -
	CHECKED -	REVISED -

STATE OF ILLINOIS  
DEPARTMENT OF TRANSPORTATION

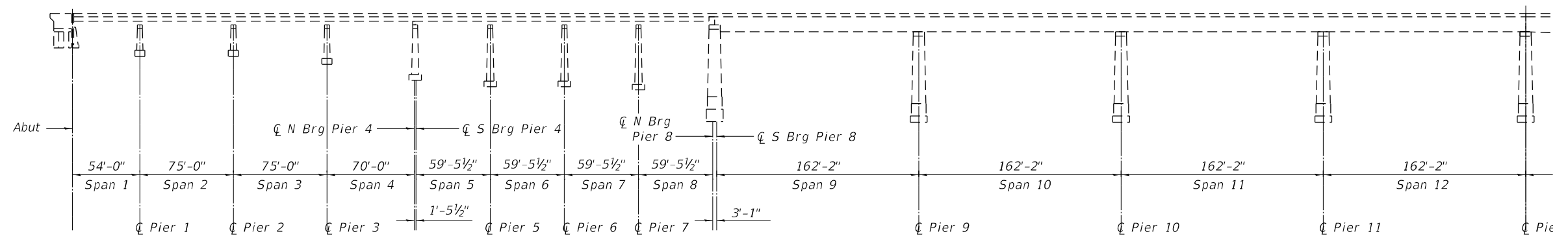
SN 081-0011 I-80 OVER MISSISSIPPI RIVER  
TYPICAL SECTION

F.A. RTE.	SECTION	COUNTY	TOTAL SHEETS	SHEET NO.
80	(81-1B)BDR	ROCK ISLAND	20	16
SN 081-0011			CONTRACT NO. 64S50	
ILLINOIS FED. AID PROJECT				





PLAN



ELEVATION

MODEL: Default  
 FILE NAME: \\kpff.com\dis\Bridges\2300240 (WO 1 I-80 64S50)02\_Design (MS)\I-80 64S50 - Plan & Elev-1.dgn  
 6/25/2023 10:22:40 AM

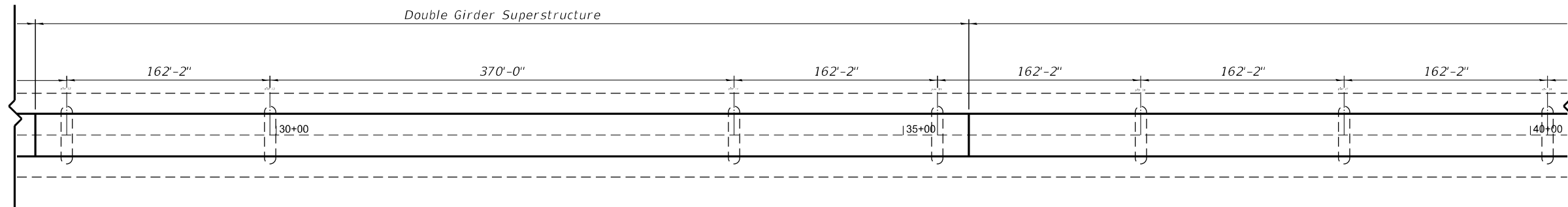
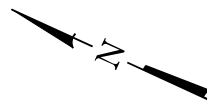


USER NAME =	DESIGNED -	REVISED -
PLOT SCALE =	CHECKED -	REVISED -
PLOT DATE =	DRAWN -	REVISED -
	CHECKED -	REVISED -

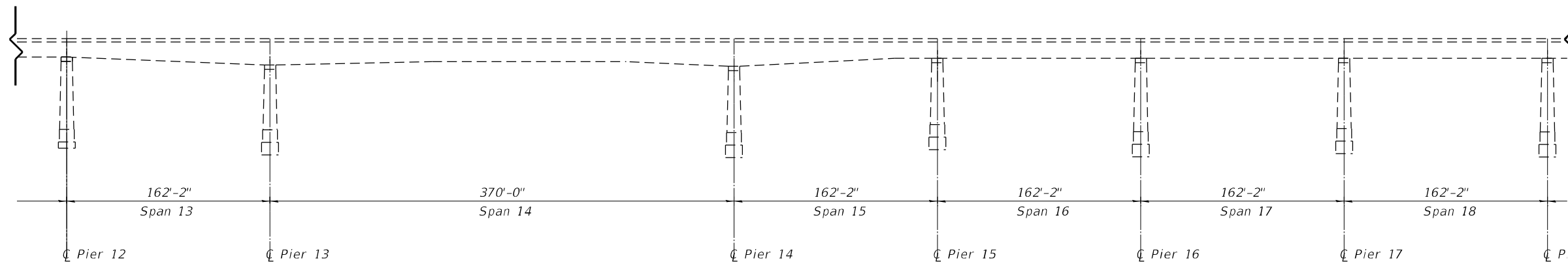
STATE OF ILLINOIS  
DEPARTMENT OF TRANSPORTATION

SN 081-0011 I-80 OVER MISSISSIPPI RIVER  
PLAN AND ELEVATION - 1

F.A. RTE.	SECTION	COUNTY	TOTAL SHEETS	SHEET NO.
80	(81-1B)BDR	ROCK ISLAND	20	17
SN 081-0011		CONTRACT NO. 64S50		
ILLINOIS FED. AID PROJECT				



PLAN



ELEVATION

MODEL: Default  
 FILE NAME: \\kpff.com\dfs\Bridges\2300240 (WO 1 I-80 64S50)\02\_Design (MS)\I-80 64S50 - Plan & Elev-2.dgn  
 6/25/2023 10:25:50 AM

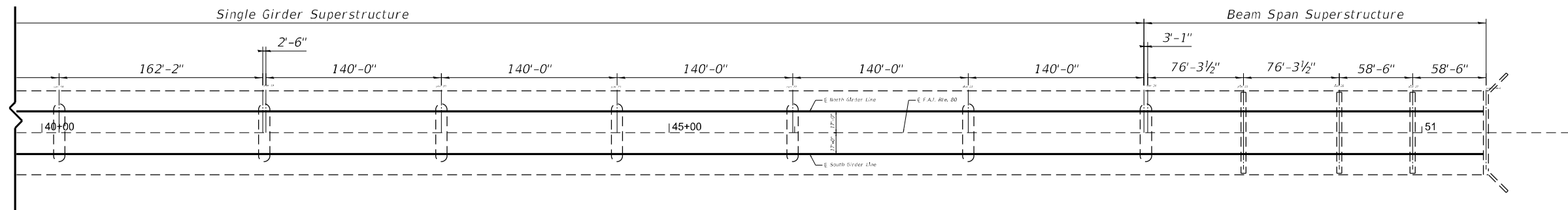
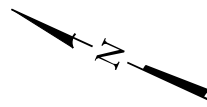


USER NAME =	DESIGNED -	REVISED -
PLOT SCALE =	CHECKED -	REVISED -
PLOT DATE =	DRAWN -	REVISED -
	CHECKED -	REVISED -

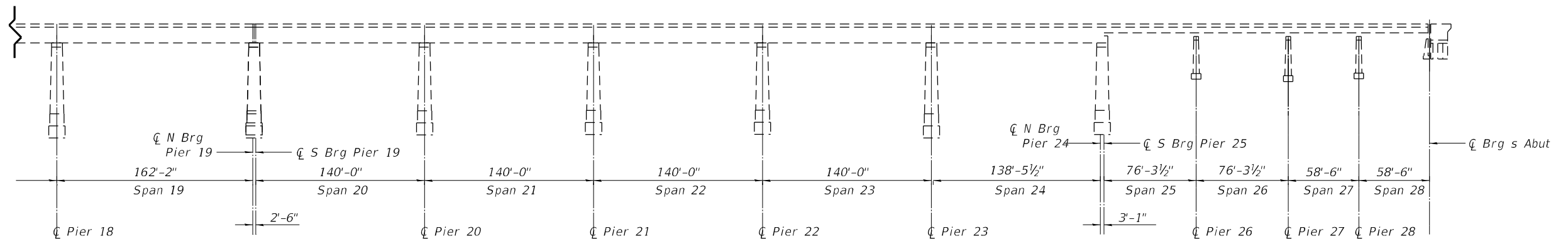
STATE OF ILLINOIS  
DEPARTMENT OF TRANSPORTATION

SN 081-0011 I-80 OVER MISSISSIPPI RIVER  
PLAN AND ELEVATION - 2

F.A. RTE.	SECTION	COUNTY	TOTAL SHEETS	SHEET NO.
80	(81-1B)BDR	ROCK ISLAND	20	18
SN 081-0011		CONTRACT NO. 64S50		
ILLINOIS FED. AID PROJECT				



PLAN



ELEVATION

MODEL: Default  
 FILE NAME: \\kpf.com\dfs\Bridges\2300240 (WO 1 I-80 64S50)\02\_Design (MS)\I-80 64S50 - Plan & Elev-3.dgn

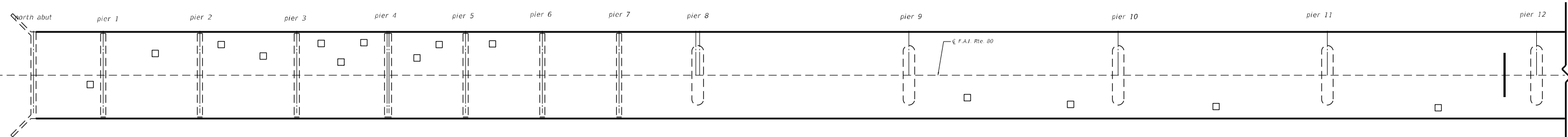
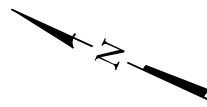


USER NAME =	DESIGNED -	REVISED -
PLOT SCALE =	CHECKED -	REVISED -
PLOT DATE =	DRAWN -	REVISED -
	CHECKED -	REVISED -

STATE OF ILLINOIS  
DEPARTMENT OF TRANSPORTATION

SN 081-0011 I-80 OVER MISSISSIPPI RIVER  
PLAN AND ELEVATION - 3

F.A. RTE.	SECTION	COUNTY	TOTAL SHEETS	SHEET NO.
80	(81-1B)BDR	ROCK ISLAND	20	19
SN 081-0011		CONTRACT NO. 64S50		
ILLINOIS FED. AID PROJECT				



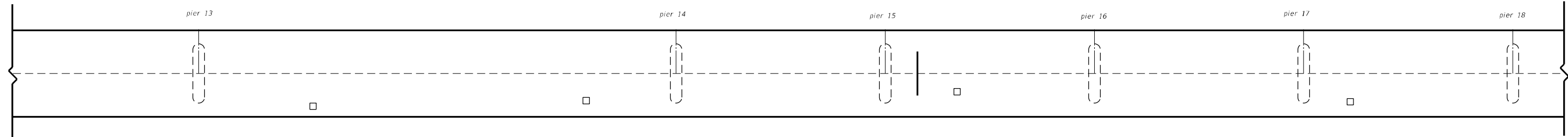
PLAN SPANS 1 THRU 12

Legend

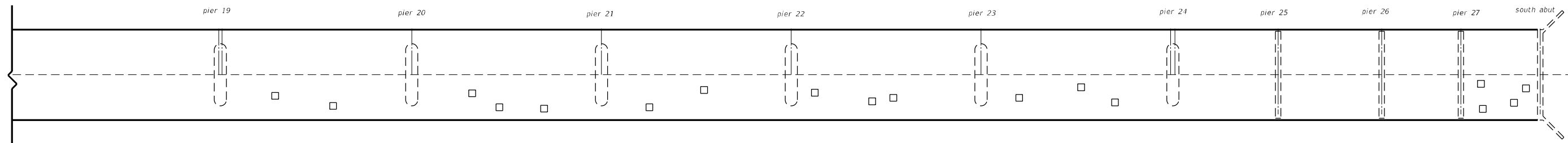
□ Deck Slab Repair (Partial)

NOTES  
 PATCHES SHOWN ARE POTENTIAL AREAS OF DECK SLAB REPAIR.  
 ACTUAL AREAS TO BE DETERMINED BY THE ENGINEER IN THE FIELD.  
 MINIMUM REMOVAL DEPTH FOR DECK SLAB REPAIR (PARTIAL) SHALL BE 2 1/4"

Date of Survey: 4/27/2023



PLAN SPANS 13 THRU 18



PLAN SPANS 19 THRU 28

MODEL: Default  
 FILE NAME: \\kpff.com\dfs\Bridges\2300240 (WO 1 I-80 64S50)02\_Design (NS)\I-80 64S50 - Deck Repairs.dgn  
 6/27/2023 10:59:44 AM

**kpff**  
 1500 Sherman Ave, Suite 1020  
 Evanston, IL 60201  
 847-859-7790  
 www.kpff.com

USER NAME =	DESIGNED -	REVISED -
PLOT SCALE =	CHECKED -	REVISED -
PLOT DATE =	DRAWN -	REVISED -
	CHECKED -	REVISED -

**STATE OF ILLINOIS**  
**DEPARTMENT OF TRANSPORTATION**

**SN 081-0011 I-80 OVER MISSISSIPPI RIVER**  
**DECK REPAIRS**

F.A. RTE.	SECTION	COUNTY	TOTAL SHEETS	SHEET NO.
80	(81-1B)BDR	ROCK ISLAND	20	20
SN 081-0011		CONTRACT NO. 64S50		
ILLINOIS FED. AID PROJECT				