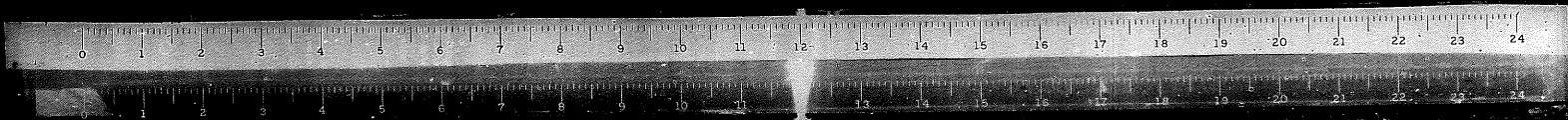


WINDY COUNTY
SECTION M-B.D.R.
ROUTE FA-98
STATION
Ruby Street Bridge
over Illinois Waterway



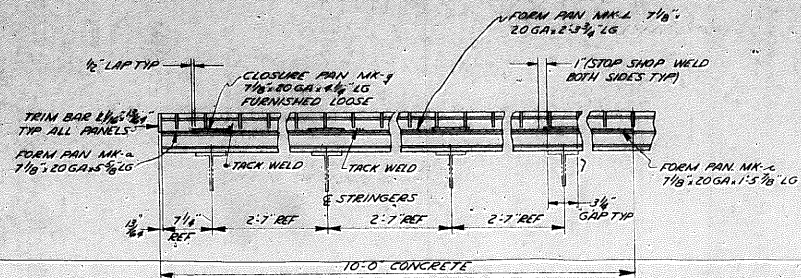
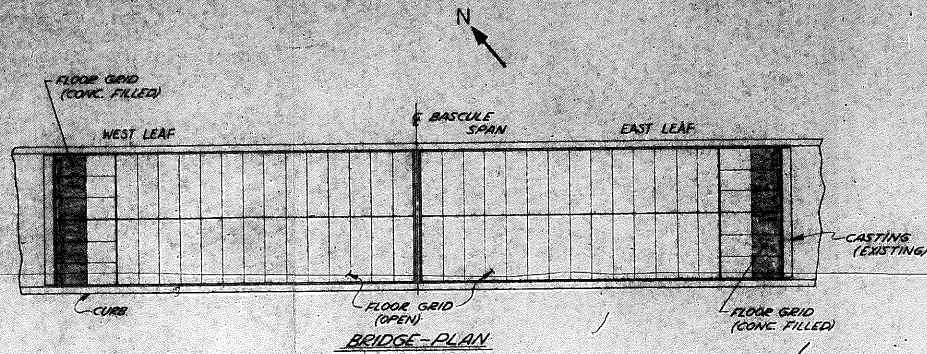
Will COUNTY

SECTION *M-BDR*

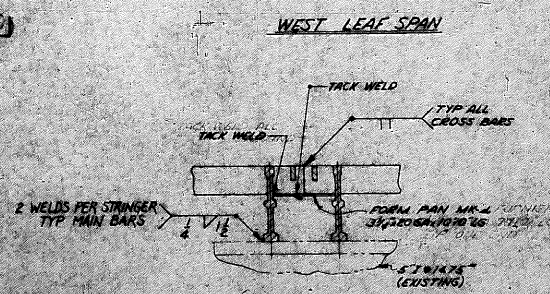
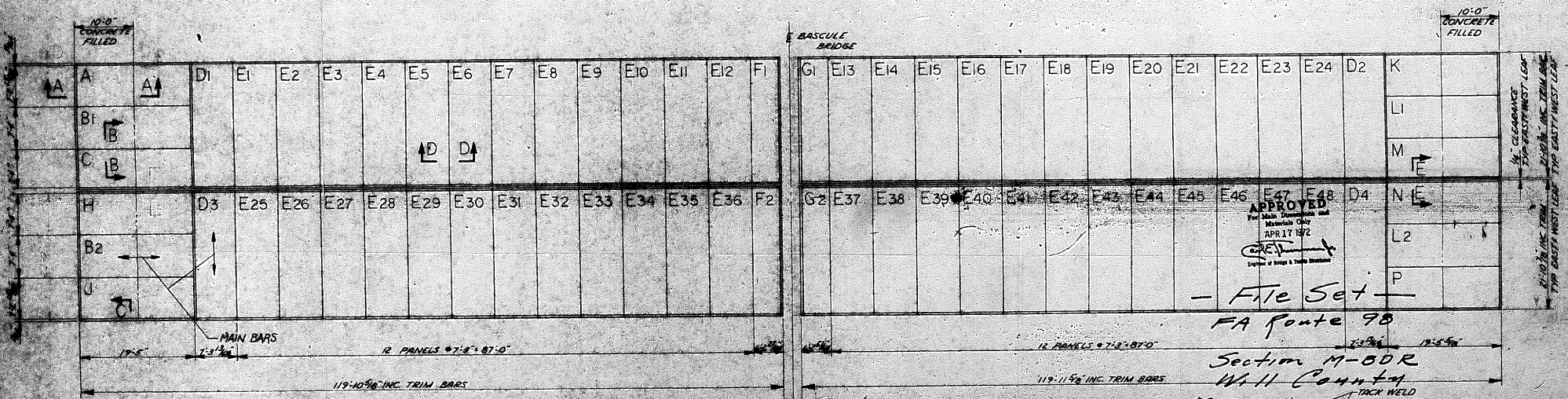
ROUTE *FA-98*

STATION

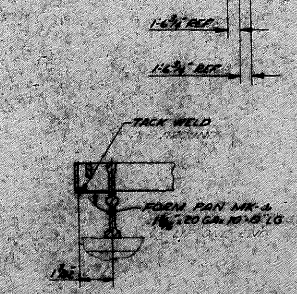
*Ruby Street Bridge
over Illinois Waterway*



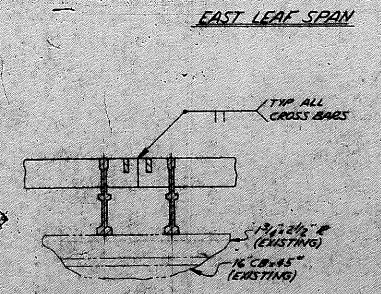
SECTION A-A
TYP PANELS A,B,C,H,I,K,L,M,N,P



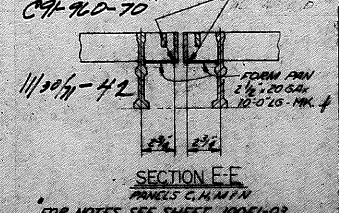
SECTION B-B
TYP ALL ADJACENT A,B,C,H,I,K,L,M,N,P PANELS



SECTION C-C
TYP BRIDGE SPANCE OF PANELS B,C,D,E,F



SECTION D-D
TYP ALL ADJACENT G,E,F,H,I PANELS



OSAGE COMPANY, INC.
800 COMMERCIAL AVE
PITTSBURGH, PA. 15222

STATE OF OHIO DEPT. OF PUBLIC WORKS DIVISION OF HIGHWAYS

SECTION	DATE	BY	CHECKED BY

7232

L. B. FOSTER COMPANY

SHEET 2B-MI OF 1

CONTRACTOR BRIGHTON BLDG. & MAINT. CO.
FOR F.A. RT. 98 (ILL.-53) SEC. M. BDR
WILL COUNTY,

CONTRACT NO. 116284
PREPARED BY RLH
DATE 4/6/72 REV

MK. P1 2'-4"

MK. P2 0'-4"



MK. P1-PL. 5" x 1/2" x 2'-4"

MK. P2-PL. 5" x 1/2" x 0'-4"

PLATE MK. P1 (REQ'D. 16)

PLATE MK. P2 (REQ'D. 2)

MK. P3 2'-4"

MK. P4 0'-4"

MK. P3 PL. 5" x 7/16" x 2'-4"

MK. P4-PL. 5" x 7/16" x 0'-4"

PLATE MK. P3 (REQ'D. 16)

PLATE MK. P4 (REQ'D. 2)

MAT'L

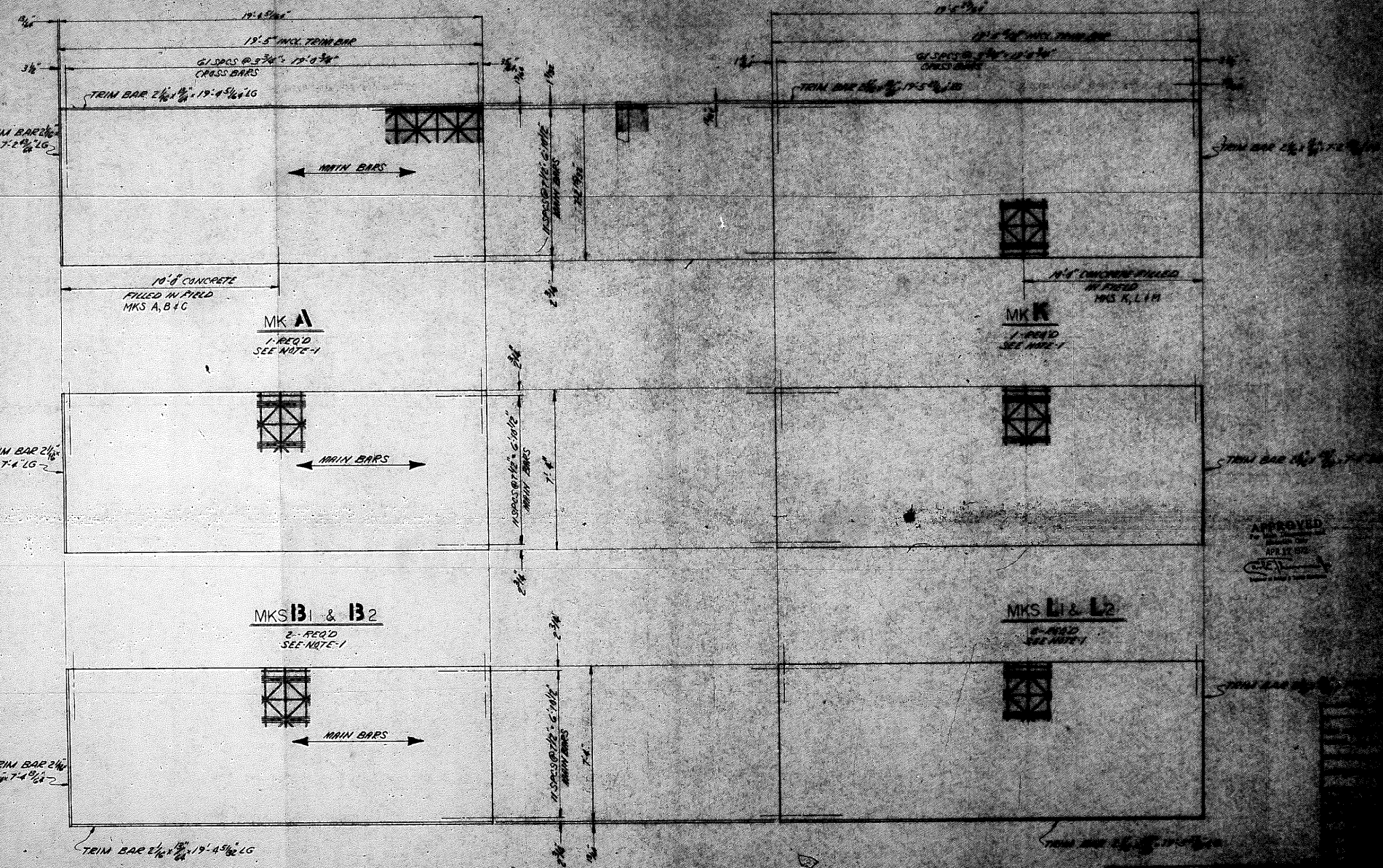
FILE SET

F.A. RT. 98
Sec. M-D&R
Will County
C-91-960-70

APPROVED
For Main Dimensions and
Material Only
APR 12 1972

Carl E. Thompson
Engineer of Bridge & Traffic Structures

ALL STEEL PLATES
CONFORM TO A.S.T.M. A36



MK A
1-REQD
SEE NOTE-1

MK K
1-REQD
SEE NOTE-1

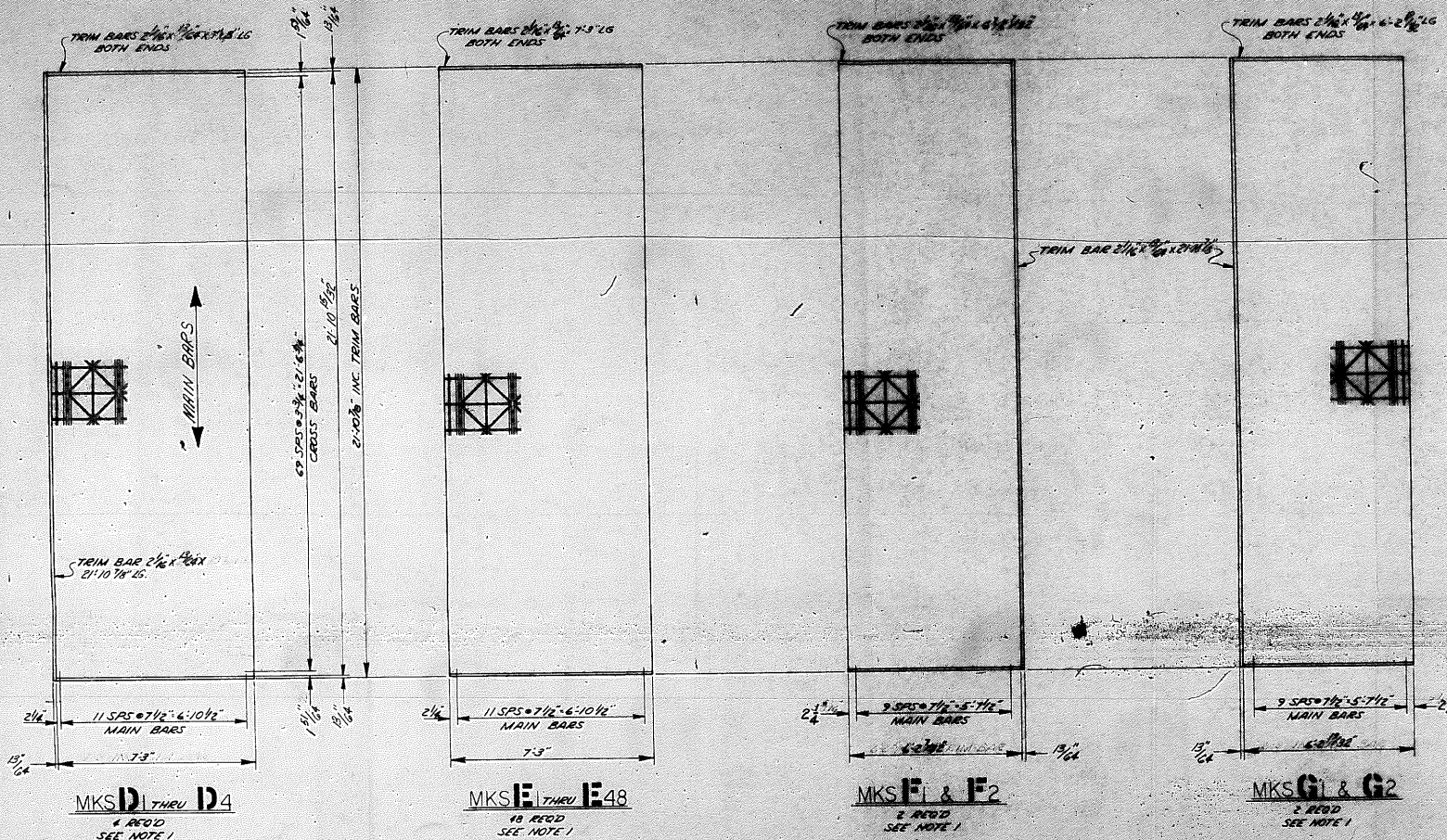
MKS B1 & B2
2-REQD
SEE NOTE-1

MKS L1 & L2
2-REQD
SEE NOTE-1

MK C
1-REQD
SEE NOTE-1

APPROVED
APR 17 1952

FOR NOTES SEE SHEET 43



MKS D1 THRU D4
4 REQ'D
SEE NOTE 1

MKS E1 THRU E48
48 REQ'D
SEE NOTE 1

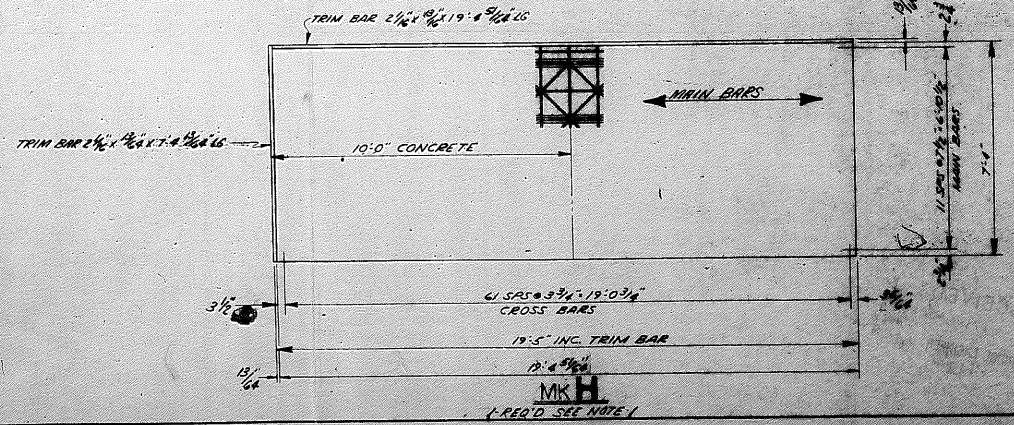
MKS F1 & F2
2 REQ'D
SEE NOTE 1

MKS G1 & G2
2 REQ'D
SEE NOTE 1

NOTES

1. MARK EACH PANEL IN UPPER LEFT HAND CORNER (MATCH IN FIELD FOR INSTALLATION AS PER PLAN VIEW).
2. REFER TO EDGE LONG OF JOINT FOR DETAILS OF GRID FLOOR.
3. AREA
 3/4\" x 3/4\" GRID CPD - 8,635 SQ. FT.
 3/4\" x 3/4\" GRID - 800 SQ. FT.
 1/4\" x 3/4\" GRID - 18,513 SQ. FT.
4. FLOORING SHAP COUNT OF RED LEAD PRIMER 500G. FT. P. 85C. TYPE II.

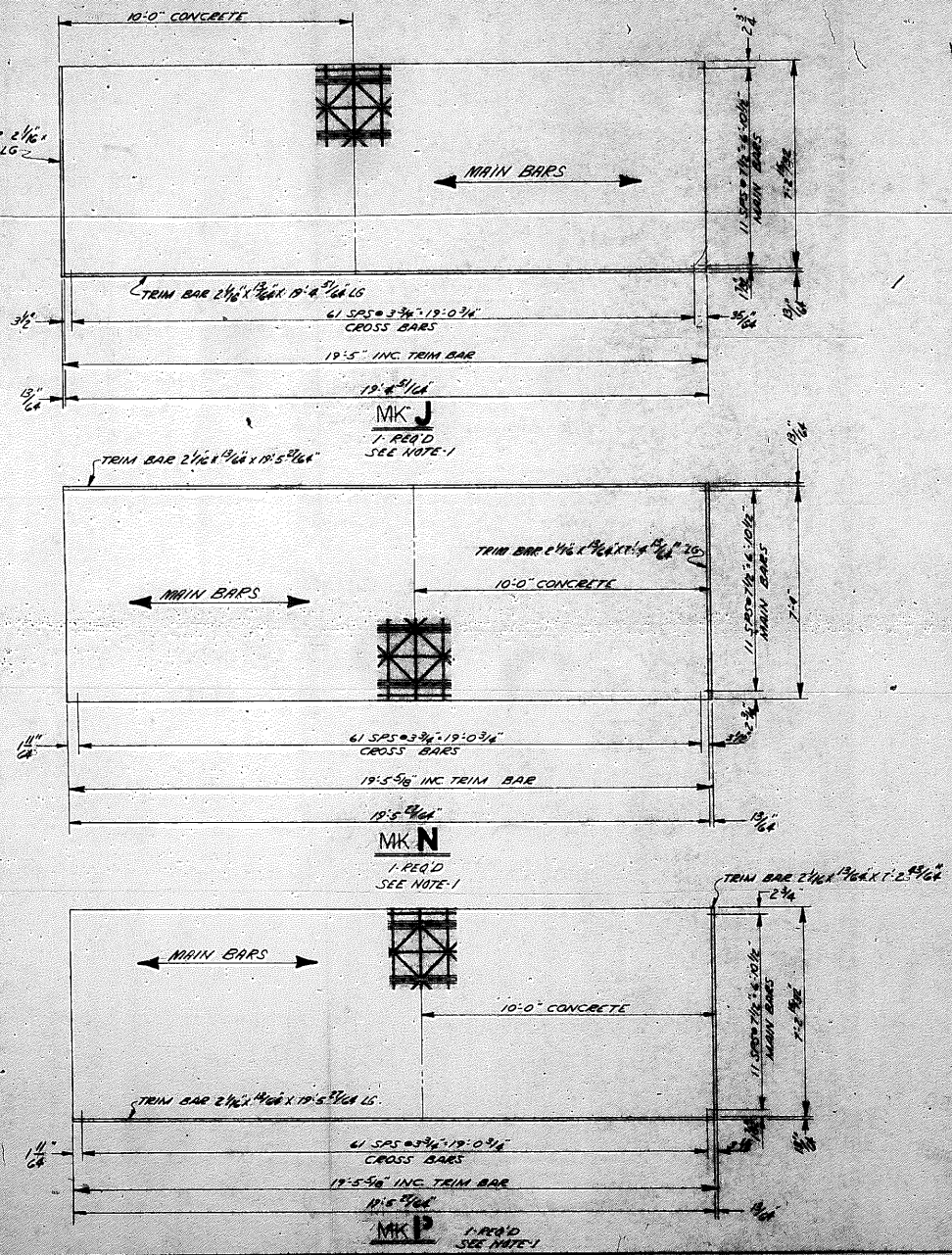
APPROVED
 For Plans, Drawings and Material Only
 APR 17 1972
 [Signature]



MKS H
1 REQ'D
SEE NOTE 1

OBAGE COMPANY, INC.
 501 COMMERCIAL AND PROFESSIONAL BLDG. PHOENIX, ARIZ.

DATE	BY	FOR



BILL OF MATERIAL		APPROVALS	
PKT	DESCRIPTION	DATE	BY
M	PANEL		
12	MAIN BARS: 12 #5 @ 18" LG		
62	CROSS BARS: 7 1/2" LG		
1	TRIM BAR 2 1/2" x 19'-4 5/16" LG		
N	PANEL		
12	MAIN BARS: 12 #5 @ 18" LG		
62	CROSS BARS: 7 1/2" LG		
1	TRIM BAR 2 1/2" x 19'-4 5/16" LG		
P	PANEL		
12	MAIN BARS: 12 #5 @ 18" LG		
62	CROSS BARS: 7 1/2" LG		
1	TRIM BAR 2 1/2" x 19'-4 5/16" LG		
Q	PANEL		
12	MAIN BARS: 12 #5 @ 18" LG		
62	CROSS BARS: 7 1/2" LG		
1	TRIM BAR 2 1/2" x 19'-4 5/16" LG		
R	PANEL		
12	MAIN BARS: 12 #5 @ 18" LG		
62	CROSS BARS: 7 1/2" LG		
1	TRIM BAR 2 1/2" x 19'-4 5/16" LG		
S	PANEL		
12	MAIN BARS: 12 #5 @ 18" LG		
62	CROSS BARS: 7 1/2" LG		
1	TRIM BAR 2 1/2" x 19'-4 5/16" LG		
T	PANEL		
12	MAIN BARS: 12 #5 @ 18" LG		
62	CROSS BARS: 7 1/2" LG		
1	TRIM BAR 2 1/2" x 19'-4 5/16" LG		
U	PANEL		
12	MAIN BARS: 12 #5 @ 18" LG		
62	CROSS BARS: 7 1/2" LG		
1	TRIM BAR 2 1/2" x 19'-4 5/16" LG		
V	PANEL		
12	MAIN BARS: 12 #5 @ 18" LG		
62	CROSS BARS: 7 1/2" LG		
1	TRIM BAR 2 1/2" x 19'-4 5/16" LG		
W	PANEL		
12	MAIN BARS: 12 #5 @ 18" LG		
62	CROSS BARS: 7 1/2" LG		
1	TRIM BAR 2 1/2" x 19'-4 5/16" LG		
X	PANEL		
12	MAIN BARS: 12 #5 @ 18" LG		
62	CROSS BARS: 7 1/2" LG		
1	TRIM BAR 2 1/2" x 19'-4 5/16" LG		
Y	PANEL		
12	MAIN BARS: 12 #5 @ 18" LG		
62	CROSS BARS: 7 1/2" LG		
1	TRIM BAR 2 1/2" x 19'-4 5/16" LG		
Z	PANEL		
12	MAIN BARS: 12 #5 @ 18" LG		
62	CROSS BARS: 7 1/2" LG		
1	TRIM BAR 2 1/2" x 19'-4 5/16" LG		

APPROVED
For Main Dimensions Only
MATERIAL ONLY
APR 17 1972
CARE
Engineer of Bridge & Traffic Structures

B.M. CONT. @ LEFT

SHOP INSPECTION REQUIRED _____
 ASBESTOS _____
 PAINT SAMPLE REQUIRED _____
 CERTIFICATED REQUIRED _____
 WELDING LOG _____
 WELDING _____
 PAINT _____
 INSPECTION MARKING _____

OSAGE COMPANY, INC.
 451 COMMERCIAL AVE.
 PETERSBURG, VA. 24487

Division: _____ Revision: _____ Date: _____

FOR STATE OF ILLINOIS DEPT. OF PUBLIC WORKS DIVISION OF HIGHWAYS

TITLE: EAST RYS. RD. (N.W. 1/4) SEC. 20 - SECTION 10 - ILLINOIS CO. ILLINOIS

PROJECT: FLOOD PROTECT. PROJECT

DATE: _____ BY: _____

*FOR NOTES SEE SHEET 10051-03