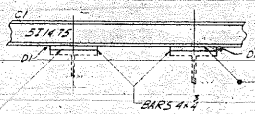
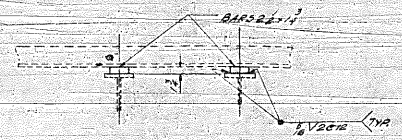


RT. SBI-A  
Ruby St.  
SEC. \_\_\_\_\_





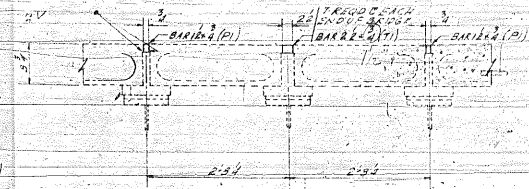
SECT. A-A (TYP. OF PANEL 1)



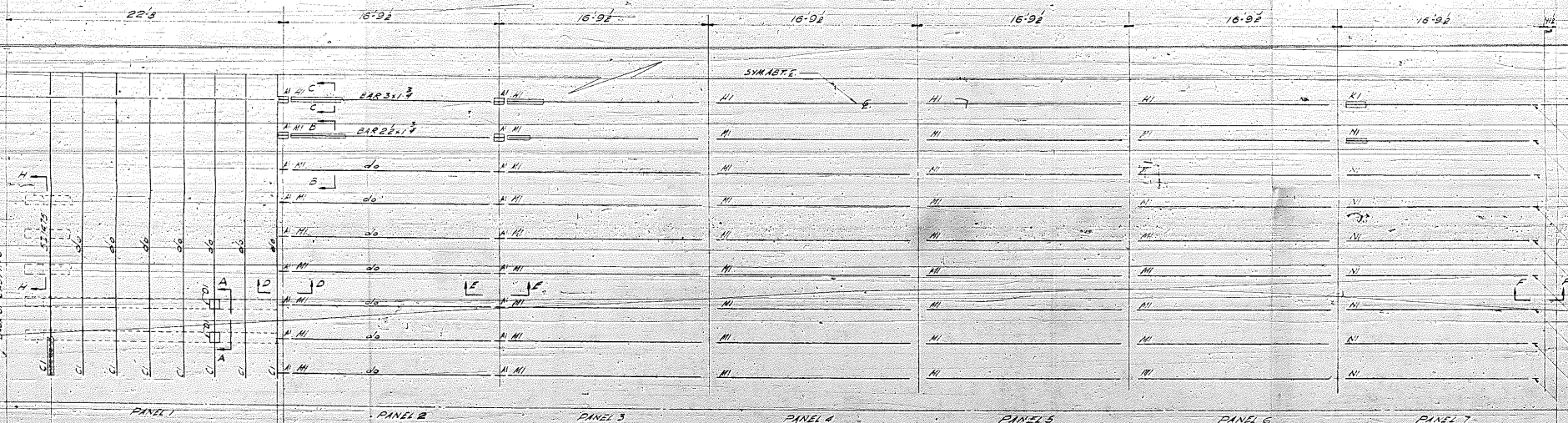
SECT. B-B (TYP. OF PANEL 2, 3, 4, 5, 6, 7)



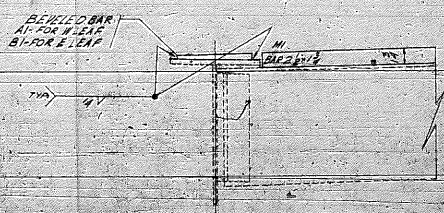
SECT. C-C (TYP. OF PANELS 2, 3, 4, 5, 6, 7)



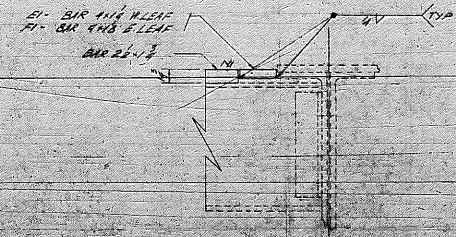
SECT. D-D



QUARTER PLAN



SECT. D-D



SECT. E-E

APPROVED  
AS CORRECTED  
W. E. FRANSON  
Engineer in Charge  
Traffic Structures

File Copy  
RUBY STREET  
S. B. I. RT. 4  
Will Co.

FOR APPROVAL

MISSISSIPPI VALLEY STRUCTURAL STEEL CO. Plant - MELROSE PARK	
Drawn: ADVA	Project: BRIDGE REPAIR (RUBY STREET)
Check: ADVA	Location: MILLET, ILLINOIS
Scale: 1/4" = 1'-0"	Contract: EASTMAN CO.
Drawn by: ADVA	Checked by: ADVA
Drawn by: ADVA	Checked by: ADVA
Drawn by: ADVA	Checked by: ADVA

STATE OF ILLINOIS





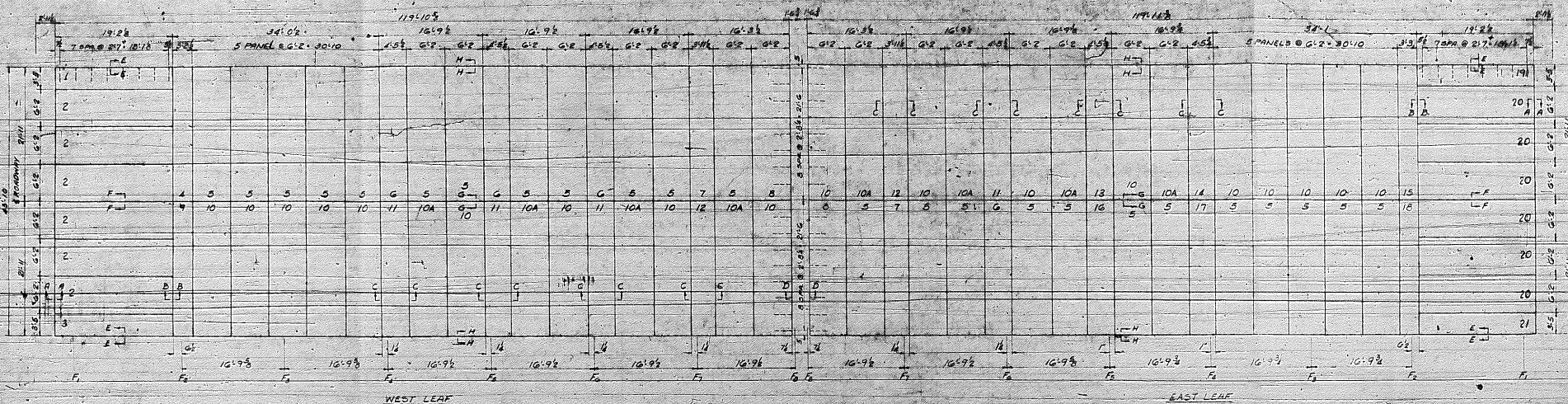






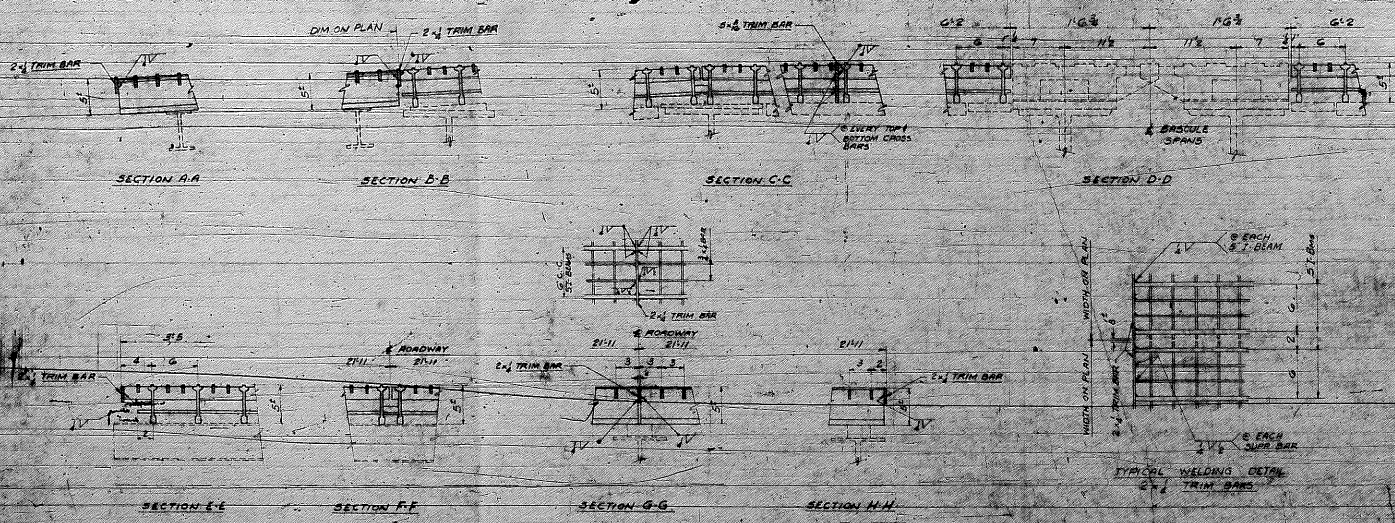






**ERECTION PLAN OF BRIDGE FLOORING**

**NOTE TO ERECTOR**  
 ERECT PANELS WITH MARK NOS. IN CORRESPONDING POSITION SHOWN ON PLAN.



*FILE COPY*  
 RBY SA  
 SBJ: 214  
 Will R.

- GENERAL NOTES**
1. ALL STEEL TO CONFORM TO ASTM A7 EXCEPT TRIM BARS TO BE COMMERCIAL STEEL.
  2. ERECTION, FIELD WELDING, FIELD SPICING & FIELD PAINTING TO BE DONE BY OTHERS.
  3. FINISHED FLOORINGS TO BE PAINTED ONE SHAP COAT RED LEAD AS PER STATE OF ILLINOIS SPEC.
  4. FOR FABRICATION DETAIL OF MARK "1, 2, 3, 4, 20 & 21" SEE DWG. 2057A.
  5. FOR FABRICATION DETAIL OF MARK "4 TO 12 INCLUSIVE" SEE DWG. 2057B.
  6. INSPECTION OF FABRICATION BY ILLINOIS DIVISION OF HIGHWAYS OR ITS REPRESENTATIVE BEFORE PAINTING.

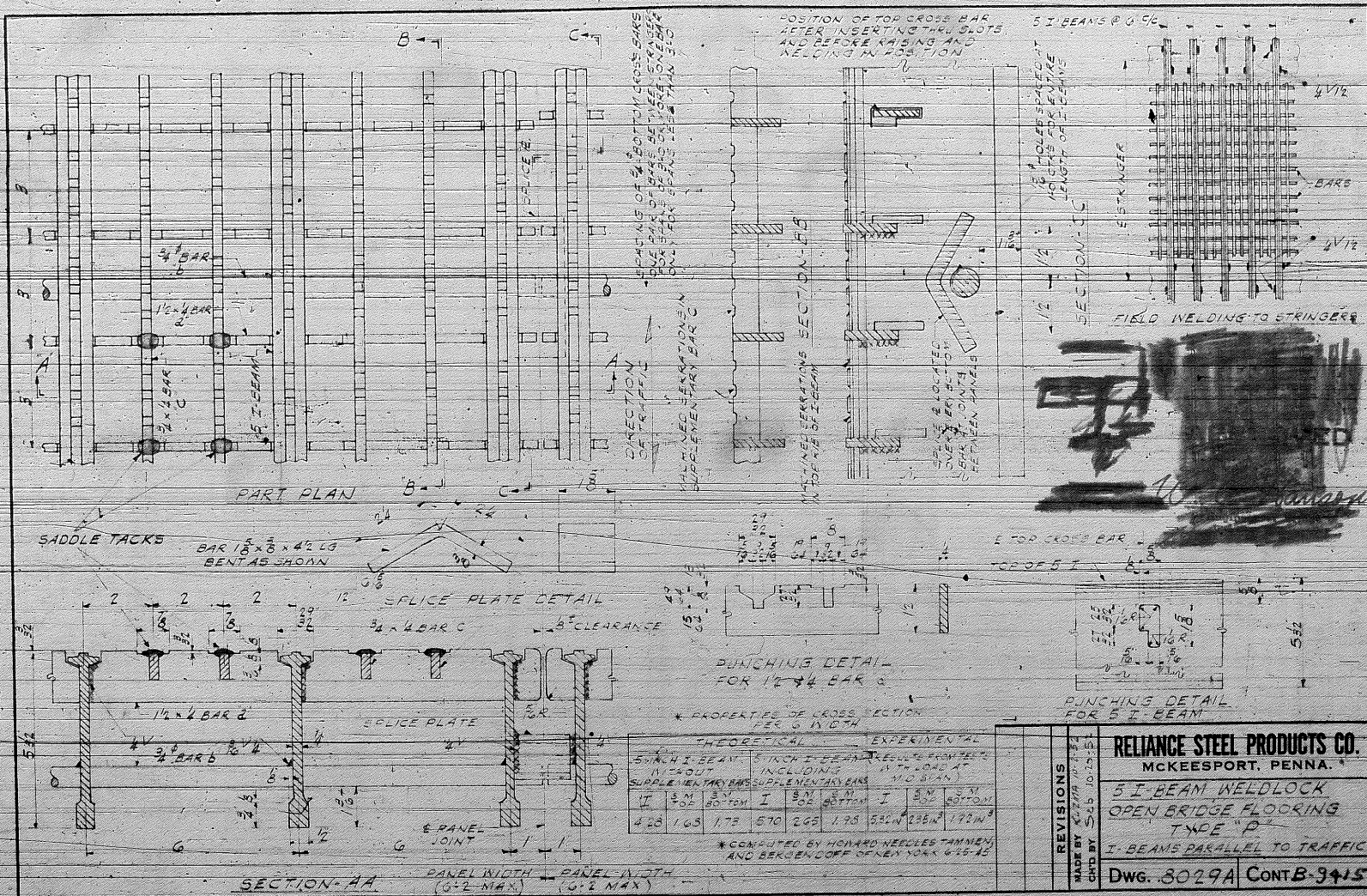
APPROVED  
 [Signature]

CUSTOMER E. H. SWENSON		<b>RELIANCE STEEL PRODUCTS COMPANY</b>	
MCKEESPORT, ILLINOIS		MCKEESPORT, ILLINOIS	
ORDER NO.	DATE	APPROVED BY	DATE
REFERENCE DRAWINGS	DATE	BY	DATE
ILLINOIS DEPT. OF PUBLIC WORKS	DATE	BY	DATE
CHICAGO, ILL.	DATE	BY	DATE









SADDLE TACKS

BAR 1 1/2 x 3/8 x 42 LB  
BENT AS SHOWN

SPlice PLATE DETAIL

3/4 x 4 BAR C

SPlice PLATE

E PANEL JOINT

SECTION-AA

PANEL WIDTH (6'-2" MAX)

PANEL WIDTH (6'-2" MAX)

PUNCHING DETAIL FOR 1/2 x 4 BAR C

\* PROPERTIES OF CROSS SECTION PER 6" WIDTH

THEORETICAL		EXPERIMENTAL	
5 INCH I-BEAM	5 INCH I-BEAM	5 INCH I-BEAM	5 INCH I-BEAM
11'-0" OUT	INCLUDING SUPPLEMENTARY BARS	INCLUDING SUPPLEMENTARY BARS	INCLUDING SUPPLEMENTARY BARS
423	163	173	570
265	135	530	192

\* CONSULTED BY HOWARD HERZLES TAMMEN AND BERGENDOFF OF NEW YORK 6-15-45

PUNCHING DETAIL FOR 5 I-BEAM

**REVISIONS**

MADE BY: K. STEIN  
CHKD BY: S. B. 10/13/45

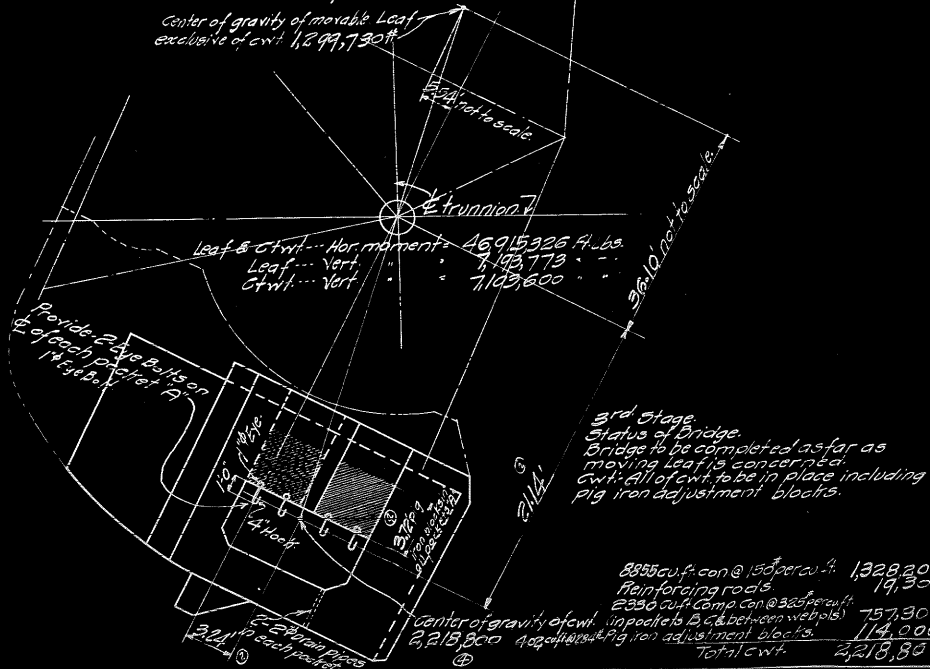
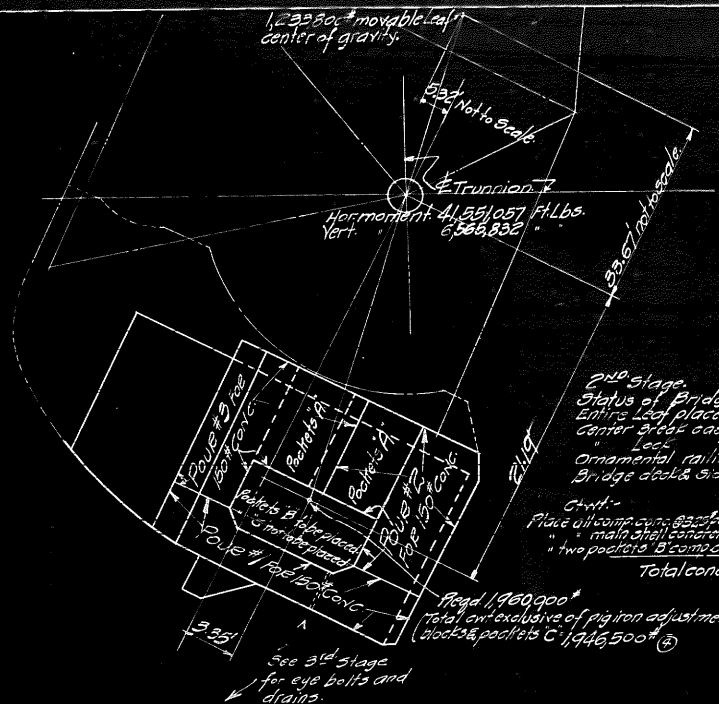
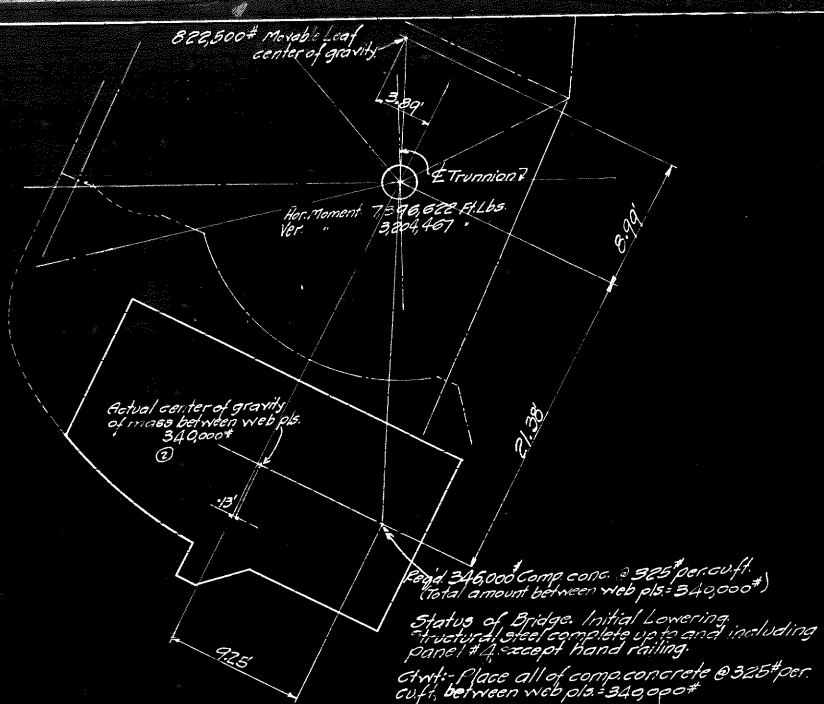
**RELIANCE STEEL PRODUCTS CO.**  
MCKEESPORT, PENNA.

**5 I-BEAM WELDLOCK  
OPEN BRIDGE FLOORING  
TYPE "D"**

I-BEAMS PARALLEL TO TRAFFIC

DWG. 8029A CONT B-9415





STATE OF ILLINOIS  
DEPARTMENT OF PUBLIC WORKS AND BUILDINGS  
DIVISION OF WATERWAYS SPRINGFIELD, ILL.

MILWAUKEE BRIDGE COMPANY  
360' to 340' between piers in all stages & pig iron in stage 3. 3' x 18" x 18" in stage 3. 3' x 18" x 18" in stage 3.

DOUBLE LEAF TRUNNION BASCULE BRIDGE  
BOYD STREET, JOLIET, ILL.  
NEST LEAF COUNTERWEIGHT  
STATE OF ILLINOIS WATERWAYS

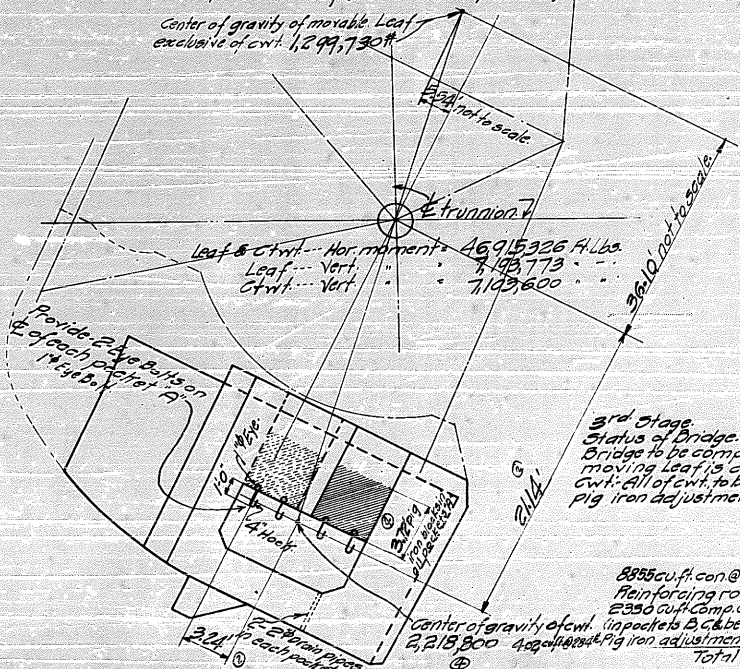
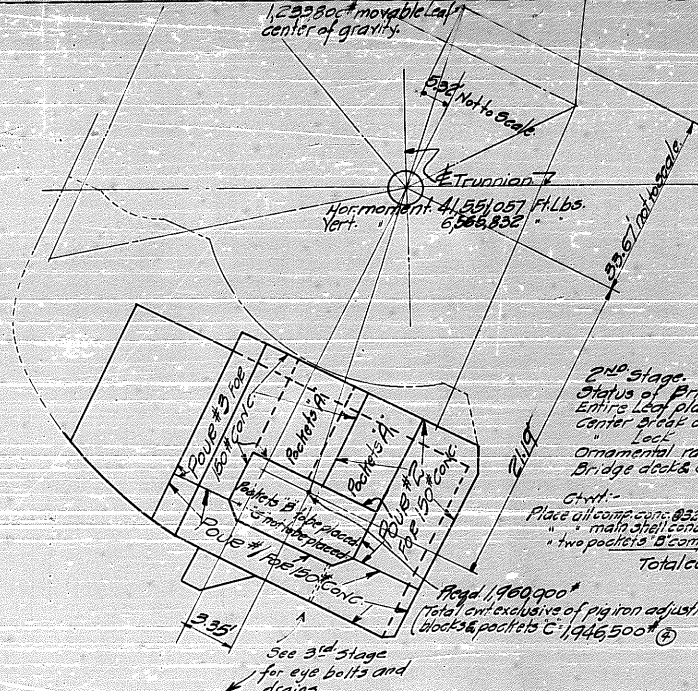
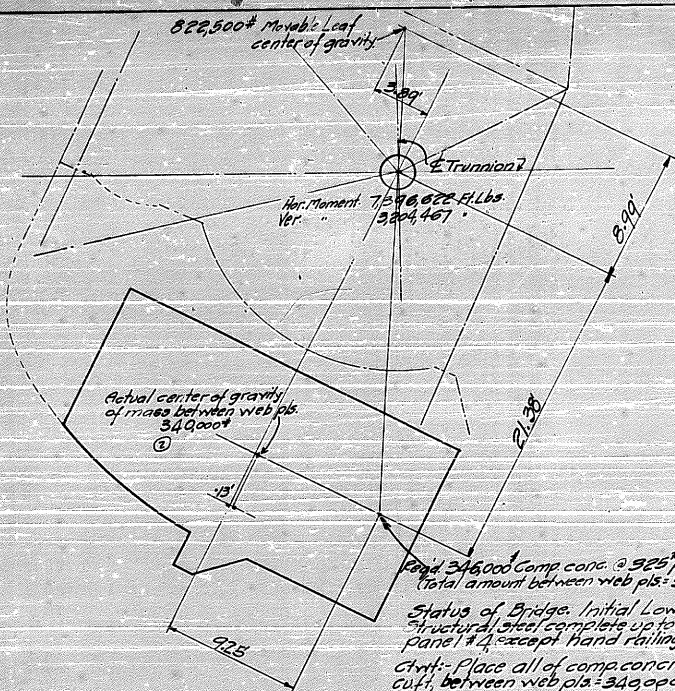
Mortar 56#  
Reinforcing 270#  
3.25# per cu ft. Comp conc.

See Bills # 7111 to NEW Div. R 55  
Schlager Printing with Bridge Co's  
drawings # 1343-45.

5092.C1







2nd Stage.  
Status of Bridge.  
Entire Leaf placed except as follows.  
Center break castings not placed.  
Leaf.  
Ornamental railing.  
Bridge deck & sidewalk from panel #6 to #9 not placed.

Cast-in-Place.  
Place all comp. con. @ 325 per cu.ft. between web pls. 349,000# @  
main shell concrete @ 150 per cu.ft. between web pls. 1,547,500# @  
two pockets B comp. con. @ 325 per cu.ft. 229,000# @  
Total conc. to be placed 1,946,500# @

STATE OF ILLINOIS  
DEPARTMENT OF PUBLIC WORKS AND BUILDINGS  
DIVISION OF WATERWAYS, SPRINGFIELD, ILL.

MILWAUKEE BRIDGE COMPANY

360° to 340° between pls. in all stages & pig iron in stage B.  $\frac{1}{2}$  inch wide x 3"

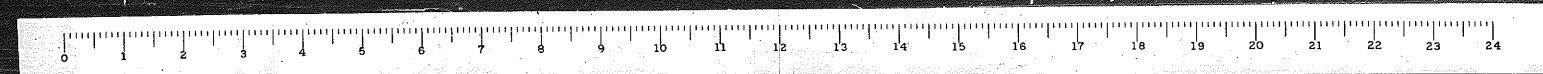
Mortar 56#  
Reinforcing 270#  
325# per cu.ft. comp. con.

See Bills # 7114 to 7154, Inc. & C5  
Delivered Pulling with Bridge Co's  
draw # 1343-45.

5092 CI

3rd Stage.  
Status of Bridge.  
Bridge to be completed as far as moving Leaf is concerned.  
Cwt. All of cwt. to be in place including pig iron adjustment blocks.

8855 cu.ft. con @ 150 per cu.ft. 1,328,200# @  
Reinforcing rods 19,300# @  
2350 cu.ft. comp. con @ 325 per cu.ft. 757,300# @  
Center of gravity of cwt. in pockets B, C between web plates 114,000# @  
400 cu.ft. of pig iron adjustment blocks 114,000# @  
Total cwt. 2,218,800# @



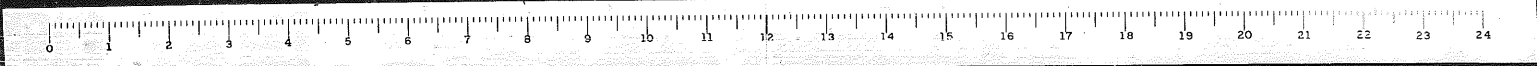


WEST LEAF					
Location and Volume		Weight#	Horizontal Dimension #	Vertical Dimension #	
Volume	Notched Top	1425.175 x 242.12 x 150*	108750	-20.6 - 2240250	+426 - 474190
	Grass Bulk	1517 x 1453 x 1702 x 150*	1634250	-20.7 - 33828975	-460 - 7517350
	Reinf. St.	19300#	19300	-22.0 - 425000	-520 - 61800
	Grass (A)		762300	-36494225	-7105200
Reductions in 150# conc.	Vol. Baskets A	4 x 7.45 x 6 x 150*	113400	-17.0 - 1927800	-260 - 294840
	" B	38.87" x 10.25 x 2 x 150*	119550	-22.6 - 2701830	-340 - 406470
	" C	38.87" x 6.25 x 2 x 150*	72900	-22.6 - 1647640	-340 - 247860
	Vol. Cut-offs	.75 x .75 x .52 x 150*	610	-27.7 - 16900	-1240 - 7560
	"	.75 x .75 x 14.33 x 2 x 150*	24450	-20.7 - 506120	-1230 - 300740
	"	1.5 x .75 x 15 x 150*	250	-14.0 - 3500	-1240 - 3100
	"	6.77 x 3.28 x 2.46 x 150*	39900	-18.0 - 698200	-9.67 - 386000
	"	66.82 x 5 x 2 x 150*	810	-13.8 - 11180	-60 - 440
	Reinf. St.	39.4 cu. ft.	5900	-22.0 - 130000	-320 - 18900
	Struc. Frame	229 cu. ft. @ 25#	41200	-20.7 - 852840	-320 - 131840
	Reductions (B)		418970	-8295910	-1797800
	150# conc.	(A) - (B)		1343330	-27998315
Baskets B		7.97 x 3.25*	259030	-22.6 - 5854080	-340 - 880700
" C		4.87 x 3.25*	158270	-22.6 - 3576900	-340 - 538120
In Trusses		Field weight 340000*	340000	-21.4 - 7276000	-13 - 44200
Chnl. exhd. of pig iron			2100630	-44705295	-6770420
Non. movable parts				146984426	+7210173
" Chnl. exhd. of pig iron				44705295	-6770420
Pig iron req'd. to balance at 25# per cu. ft.		98000	-18.9 - 1892200	-246 - 241080	
Loss of Non. movable parts due to Leaf weight reduction. Add 3" to bottom of chnl. (150# Concrete)			4200	-20.5 - 85531	-53000
Additional Pig Iron req'd. for 25# timber instead of 34*			16000	-17.04 - 272300	-246 - 39100

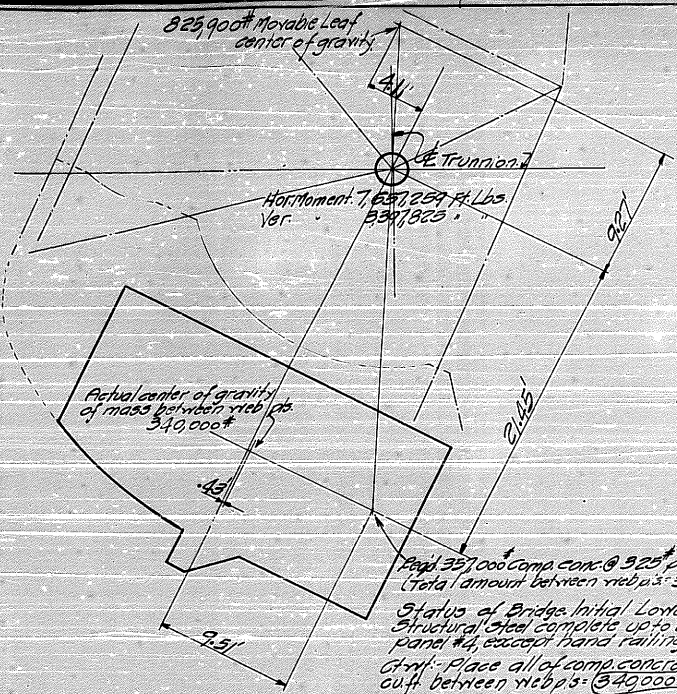
EAST LEAF					
Location and Volume		Weight#	Horizontal Dimension #	Vertical Dimension #	
Volume	Notched Top	433 x 175 x 242.12 x 150*	109200	-20.7 - 2260250	+444 - 459248
	Grass Bulk	1517 x 1446 x 1702 x 150*	1649100	-20.7 - 3436370	-500 - 8278482
	Reinf. St.	19300#	19300	-22.0 - 425000	-520 - 65800
	Grass (A)		777600	-36821810	-7914034
Reductions in 150# conc.	Vol. Baskets A	4 x 7.45 x 6 x 150*	113400	-17.0 - 1927800	-277 - 312118
	" B	50.2 x 2.25 x 4.5 x 150*	44050	-18.9 - 852545	-561 - 247120
	" C	38.06" x 10.25 x 2 x 150*	117030	-22.6 - 2642378	-361 - 422478
	" D	38.06" x 6.25 x 2 x 150*	71360	-22.6 - 162736	-361 - 257610
	Vol. Cut-offs	.75 x .75 x 14.66 x 2 x 150*	28670	-20.7 - 593469	-1260 - 362962
	"	.75 x .75 x 8.25 x 150*	520	-14.1 - 7352	-1281 - 6561
	"	4.2 x 8.75 x 16.00 x 150*	882	-27.8 - 24520	-1281 - 11300
	"	7.06 x 12.86 x 2.46 x 150*	43350	-18.1 - 731635	-9.87 - 427865
	"	66.749 x 5.0 x 2 x 150*	780	-13.8 - 10762	-69 - 388
	Reinf. St.	39.4 cu. ft.	5900	-22.0 - 130000	-341 - 20100
	Struc. Frame	229 cu. ft. @ 25#	41200	-20.7 - 852840	-410 - 168920
	Reductions (B)		467142	-9421579	-2289672
150# conc.	(A) - (B)		1310458	-27400291	-5674362
	Baskets B	2.93 x 3.25*	95220	-18.9 - 1799658	-561 - 554184
	" C	7.80 x 3.25*	253500	-22.6 - 572935	-361 - 915135
	" D	4.76 x 3.25*	154700	-22.6 - 3496220	-361 - 338267
	In Trusses	Field weight 340000*	340000	-21.9 - 7310000	-39 - 146200
	Chnl. exhd. of pig iron		2153878	-45735269	-7828348
	Non. movable parts			448101372	+8287989
	" Chnl. exhd. of pig iron			45735269	-7828348
	Pig iron req'd. to balance at 25# per cu. ft.	98000	-18.9 - 1852200	-277 - 271460	
	Loss of Non. movable parts due to Leaf weight reduction. Add 4" to front of chnl. (150# Concrete)		35500	-13.3 - 473003	-355 - 125681
Loss in Pair between Trusses 4.20" (Field) Timber 2" top of instead of 4"			-215 - 93600	-13 - 1892	
Additional Pig Iron req'd.		21700	-16.95 - 366900	-277 - 60000	

STATE OF ILLINOIS  
DEPARTMENT OF PUBLIC WORKS AND BUILDINGS  
DIVISION OF WATERWAYS, SPRINGFIELD, ILL.

WABRIDGE COMPANY  
BY: JAMES L. BRIDGES  
1932  
COUNTY OF SPRINGFIELD, ILL.  
COUNTY ENGINEER'S CALCULATIONS.  
Springfield, ILL.  
Field Notes  
Drawings  
Checked by: M. J. [Signature]  
5092 CR







825.90 ft Movable Leaf  
center of gravity

Trunnion

Hor. moment 7,637,239 Ft. Lbs.  
Vert. 539,923

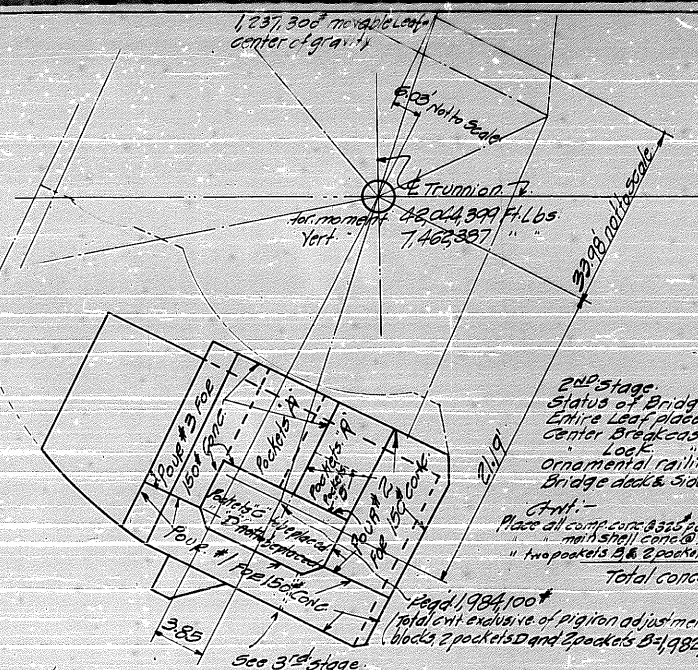
Actual center of gravity  
of mass between web ps.  
340,000\*

Reqd. 357,000 comp. conc. @ 925\* per cu. ft.  
(Total amount between web ps. 340,000\*)

Status of Bridge Initial Lowering.  
Structural steel complete up to and including  
panel #4, except hand railing.

Ctrl. - Place all of comp. concrete @ 925\* con-  
crt. between web ps. 349,000\* Actual field pour 335,600\*

center of gravity of movable leaf  
exclusive of cwt. 1310,830\*



1,237.30 ft Movable Leaf  
center of gravity

Trunnion

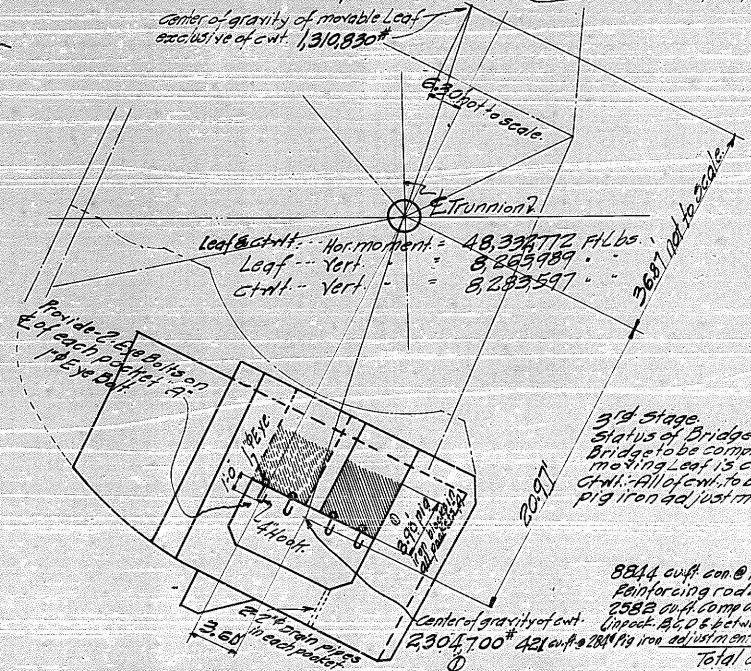
Hor. moment 42,044,399 Ft. Lbs.  
Vert. 7,466,397

2nd stage  
Status of Bridge:  
Entire Leaf placed except as follows:  
Center Break castings not placed.  
Ornamental railing  
Bridge deck & sidewalk from panel #6 to #8 not placed.

Ctrl. -  
Place all comp. conc. @ 925\* per cu. ft. between web ps. 335,600\*  
main shell conc. @ 150\* per cu. ft. for right rods 346,000\*  
two pockets B & 2 pockets C @ 525\* per cu. ft. 301,100\*

Total conc. to be placed 1,982,700\*  
Total cwt. exclusive of pig iron adjustment  
blocks 2 pockets D and 2 pockets B 1,982,700\*

See 3rd stage  
for eye bolts and  
drains.



Leaf @ cwt. - Hor. moment = 48,396,712 Ft. Lbs.  
Leaf - vert. = 8,265,989  
Ctrl. - vert. = 8,283,597

3rd stage  
Status of Bridge  
Bridge to be completed as far as  
moving leaf is concerned.  
Ctrl. - All of cwt. to be in place including  
pig iron adjustment blocks.

8844 cu. ft. con @ 150\* per cu. ft. 1,326,700\*  
Reinforcing rods 19,300\*  
2582 cu. ft. comp. con @ 925\* per cu. ft. 839,000\*  
Unpack A, B, C & between web ps. 119,700\*  
Total cwt. 2,304,700\*

Mortar 55\*  
Punchings 270\*  
325\* per sq. ft. for comp. conc.

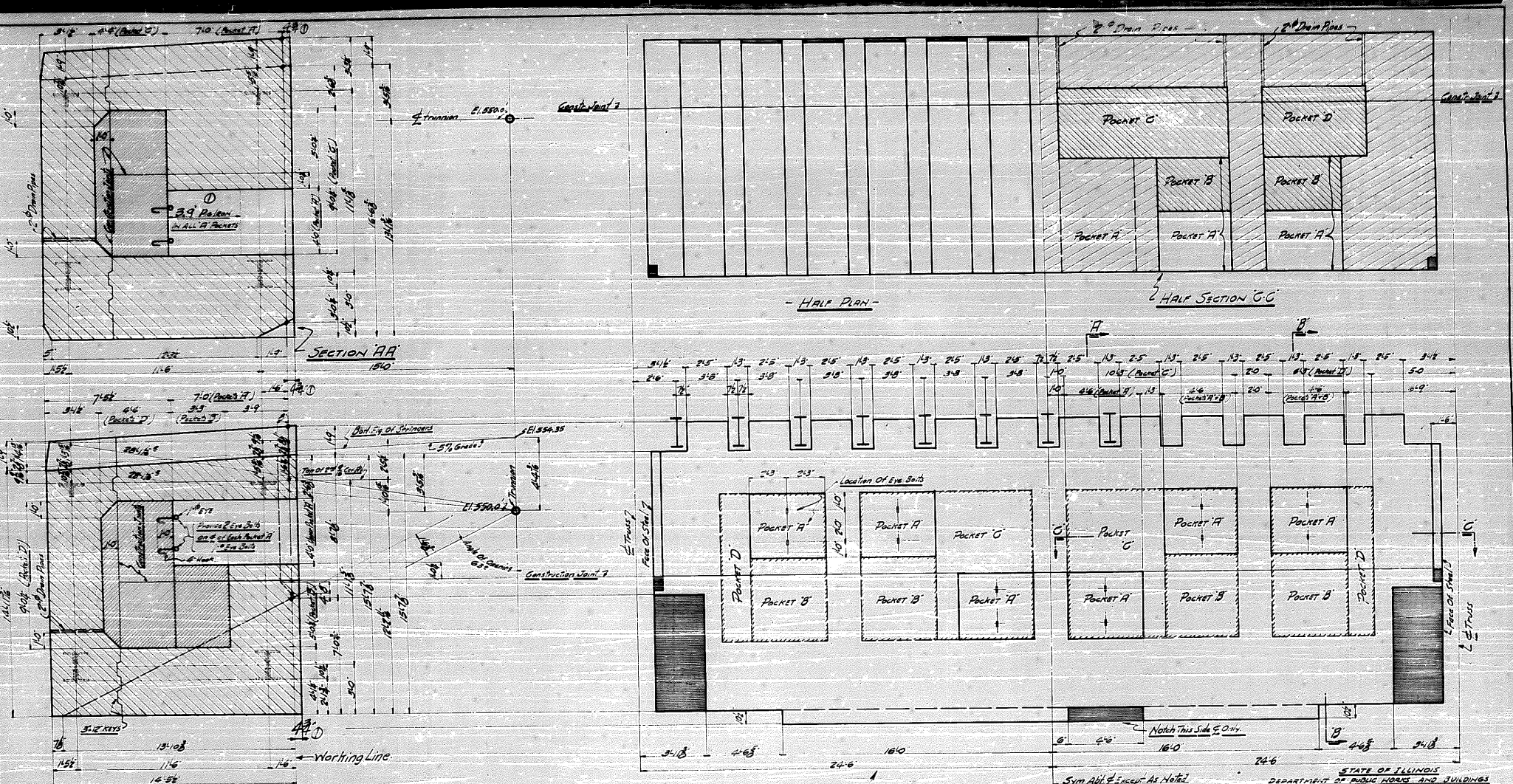
See Bill # M1aE to M3aE Incl 664.  
See Scherger Pulling Lift Bridge Cos.  
drawg. # 1343-44.

STATE OF ILLINOIS  
DEPARTMENT OF PUBLIC WORKS AND BUILDINGS  
DIVISION OF HIGHWAYS, SPRINGFIELD, ILL.

MILWAUKEE BRIDGE COMPANY			
MILWAUKEE, WISCONSIN			
REVISIONS	DOUBLE LEAF TRUNNION BASCULE SCARF		
1	ELAB. STREET LIGHT, ILL.		
2	FIRST LEAF COUNTWEIGHT		
3	SPREADERS STATE OF ILL. DIV. OF HIGHWAYS		
4	Shop Plans		
5	Field Plans		
6	Drawings		
7	Drawings		
8	Drawings		
9	Drawings		
10	Drawings		
11	Drawings		
12	Drawings		
13	Drawings		
14	Drawings		
15	Drawings		
16	Drawings		
17	Drawings		
18	Drawings		
19	Drawings		
20	Drawings		
21	Drawings		
22	Drawings		
23	Drawings		
24	Drawings		
25	Drawings		
26	Drawings		
27	Drawings		
28	Drawings		
29	Drawings		
30	Drawings		
31	Drawings		
32	Drawings		
33	Drawings		
34	Drawings		
35	Drawings		
36	Drawings		
37	Drawings		
38	Drawings		
39	Drawings		
40	Drawings		
41	Drawings		
42	Drawings		
43	Drawings		
44	Drawings		
45	Drawings		
46	Drawings		
47	Drawings		
48	Drawings		
49	Drawings		
50	Drawings		
51	Drawings		
52	Drawings		
53	Drawings		
54	Drawings		
55	Drawings		
56	Drawings		
57	Drawings		
58	Drawings		
59	Drawings		
60	Drawings		
61	Drawings		
62	Drawings		
63	Drawings		
64	Drawings		
65	Drawings		
66	Drawings		
67	Drawings		
68	Drawings		
69	Drawings		
70	Drawings		
71	Drawings		
72	Drawings		
73	Drawings		
74	Drawings		
75	Drawings		
76	Drawings		
77	Drawings		
78	Drawings		
79	Drawings		
80	Drawings		
81	Drawings		
82	Drawings		
83	Drawings		
84	Drawings		
85	Drawings		
86	Drawings		
87	Drawings		
88	Drawings		
89	Drawings		
90	Drawings		
91	Drawings		
92	Drawings		
93	Drawings		
94	Drawings		
95	Drawings		
96	Drawings		
97	Drawings		
98	Drawings		
99	Drawings		
100	Drawings		







SECTION B-B

FRONT ELEVATION

Note: Main Shell Concrete To Be 150' 2" Cubic Foot Exclusive of Reinforcing Bars.  
 Pockets B-C & D Concrete To Be 325' Per Cubic Foot.  
 Pockets A On Iron Adjustment Blocks @ 254' Per Cubic Foot.

For Reinforcing Steel See Drawg. 2226-J Sheet N-2A.

EAST LEAF GTWT

STATE OF ILLINOIS  
 DEPARTMENT OF PUBLIC WORKS AND BUILDINGS  
 DIVISION OF HIGHWAYS AND BRIDGES  
**MILWAUKEE BRIDGE COMPANY**  
 MILWAUKEE, WISCONSIN

REVISION: 1/18/30  
 PROJECT: PULLEY STREET BRIDGE  
 JOLIET, ILLINOIS.

DATE: 1/18/30  
 DRAWN BY: L. F. J. B.  
 CHECKED BY: J. V. J.  
 SCALE: AS SHOWN

APPROVED BY: 5092  
 DRAWN BY: J. V. J.  
 DATE: 1/18/30

FOR REINFORCING STEEL SEE DRAWG. 2226-J SHEET N-2A

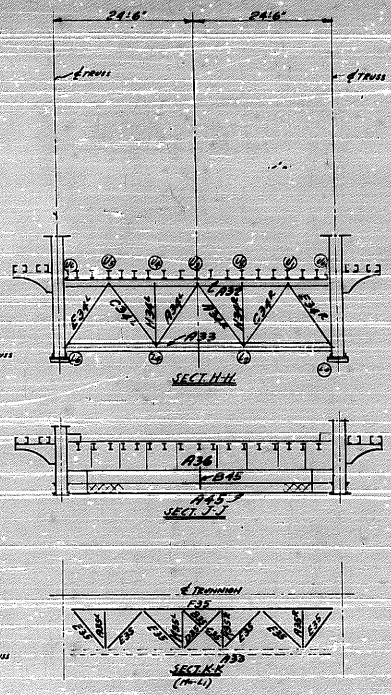
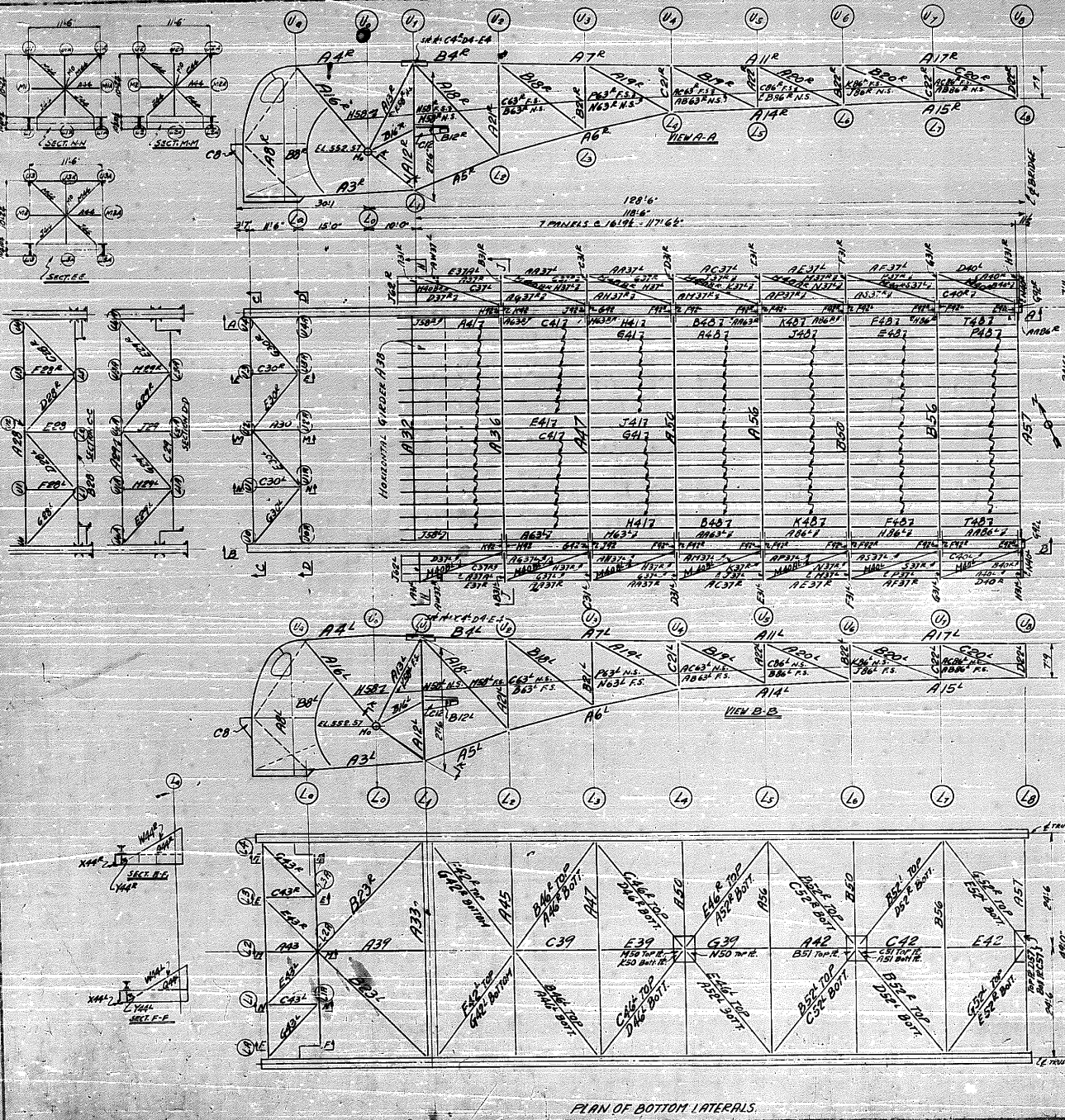
STRENGTH AND SECURITY











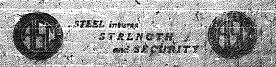
NOTE:  
FOR MARKS OF FLOOR PLATES  
BETWEEN CURB & SIDEWALK  
REFER TO SHEETS 58-63-98

NOTE:  
PIECE MARKS AND MATCH MARKS FOR  
THIS SIDE TO BE IN YELLOW COLOR.  
PANEL POINTS TO BE USED FOR  
MATCH MARKS.

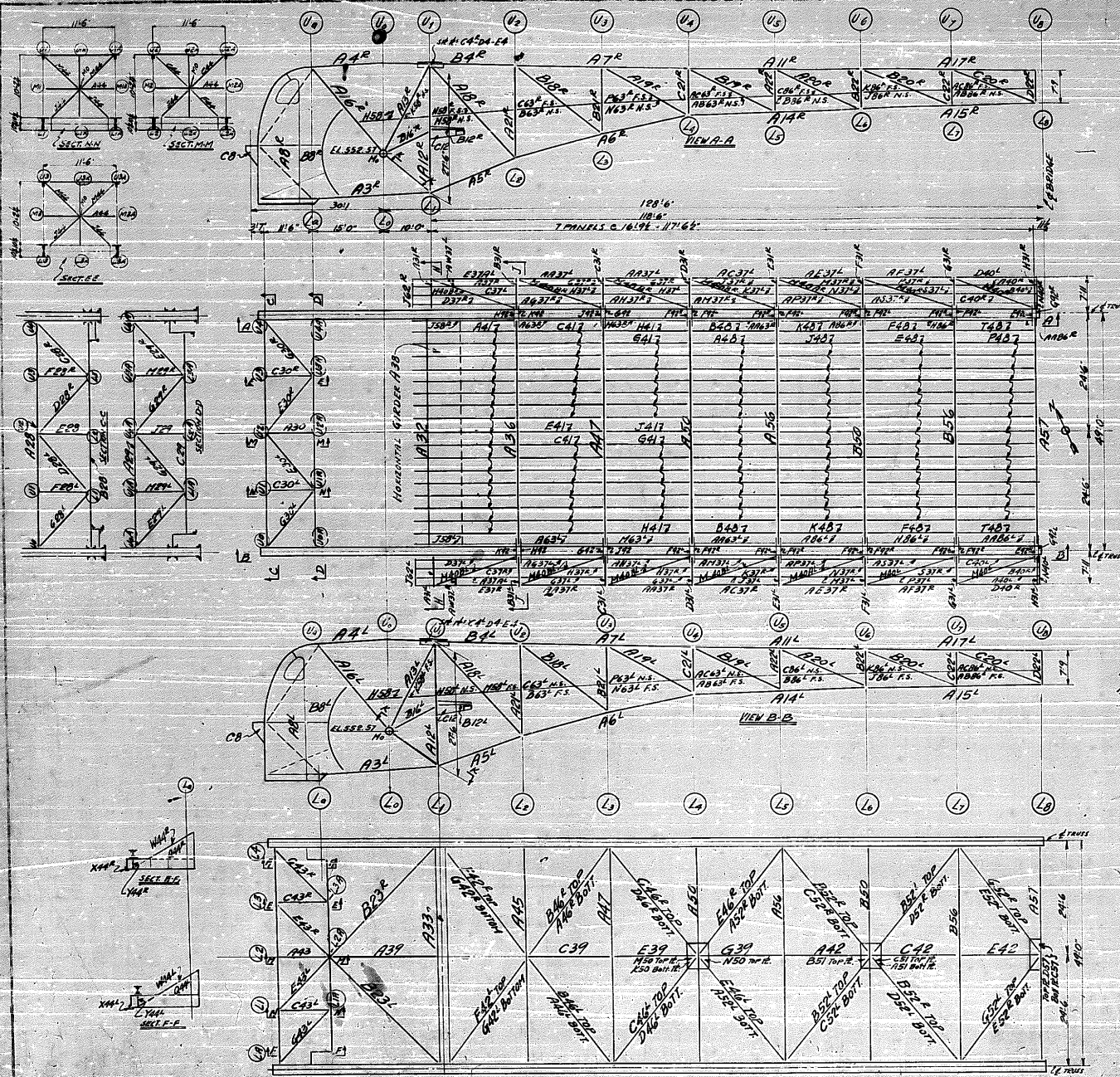
# WEST LEAF

STATE OF ILLINOIS  
DEPARTMENT OF PUBLIC WORKS AND BUILDINGS  
DIVISION OF WATERWAYS, SPRINGFIELD, ILL.  
MILWAUKEE BRIDGE COMPANY  
MILWAUKEE, WISCONSIN

DESIGN:	DOUBLE LEAF TRUSS BRIDGE		
LOCATION:	PURY STREET, JOLIET, ILL.		
CONTRACT:	ERECTOR COMPANY, THE WEST LEAF		
STATE:	STATE OF ILL., DIV. OF HIGHWAYS		
FIELD NO.:			
REVISION:			
DATE:			
BY:	P.V.	Checked by:	
DATE:	7-30-38	Sheet No.:	5075 E2
DESIGNED BY:		APPROVED BY:	







PLAN OF BOTTOM LATERALS

NOTE:  
FOR MARKS OF FLOOR PLATES  
BETWEEN CURB & SIDEWALK  
REFER TO SHEETS 58-63-86

NOTE:  
PIECE MARKS AND MATCH MARKS FOR  
THIS SIDE TO BE IN YELLOW COLOR.  
PANEL POINTS TO BE USED FOR  
MATCH MARKS.

# WEST LEAF

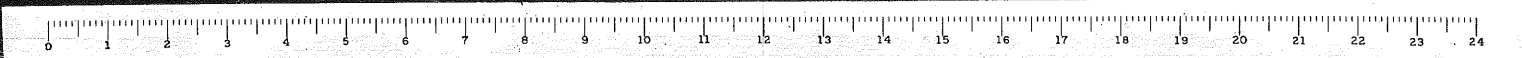
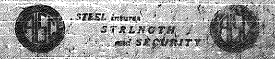
STATE OF ILLINOIS  
DEPARTMENT OF PUBLIC WORKS AND BUILDINGS  
DIVISION OF WATERWAYS - SPRINGFIELD, ILL.

MILWAUKEE BRIDGE COMPANY  
MILWAUKEE, WISCONSIN

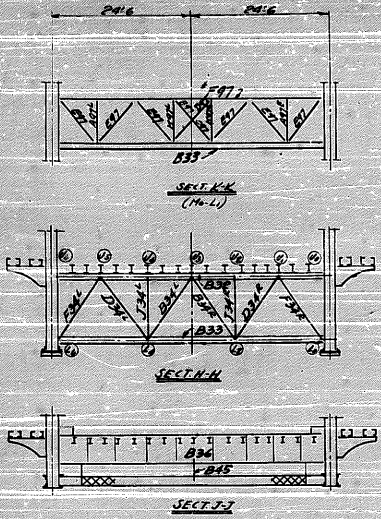
DOUBLE LEAF TRUSS BRIDGE  
RUBY STREET, JOLIET, ILL.  
ERECTION DIAGRAM FOR WEST LEAF  
STATE OF ILL., DIV. OF WATERWAYS

1	DESIGNED BY	Checked by	DATE
2	Drawn by	Checked by	DATE
3	Field Notes	Checked by	DATE
4	Revised	Checked by	DATE
5	Scale	Checked by	DATE
6	Traced by	Checked by	DATE
7	Checked by	Checked by	DATE
8	Site	Checked by	DATE
9	Scale	Checked by	DATE
10	Traced by	Checked by	DATE
11	Checked by	Checked by	DATE
12	Site	Checked by	DATE
13	Scale	Checked by	DATE
14	Traced by	Checked by	DATE
15	Checked by	Checked by	DATE
16	Site	Checked by	DATE
17	Scale	Checked by	DATE
18	Traced by	Checked by	DATE
19	Checked by	Checked by	DATE
20	Site	Checked by	DATE
21	Scale	Checked by	DATE
22	Traced by	Checked by	DATE
23	Checked by	Checked by	DATE
24	Site	Checked by	DATE

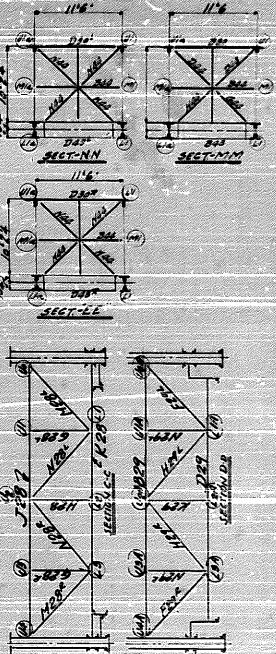
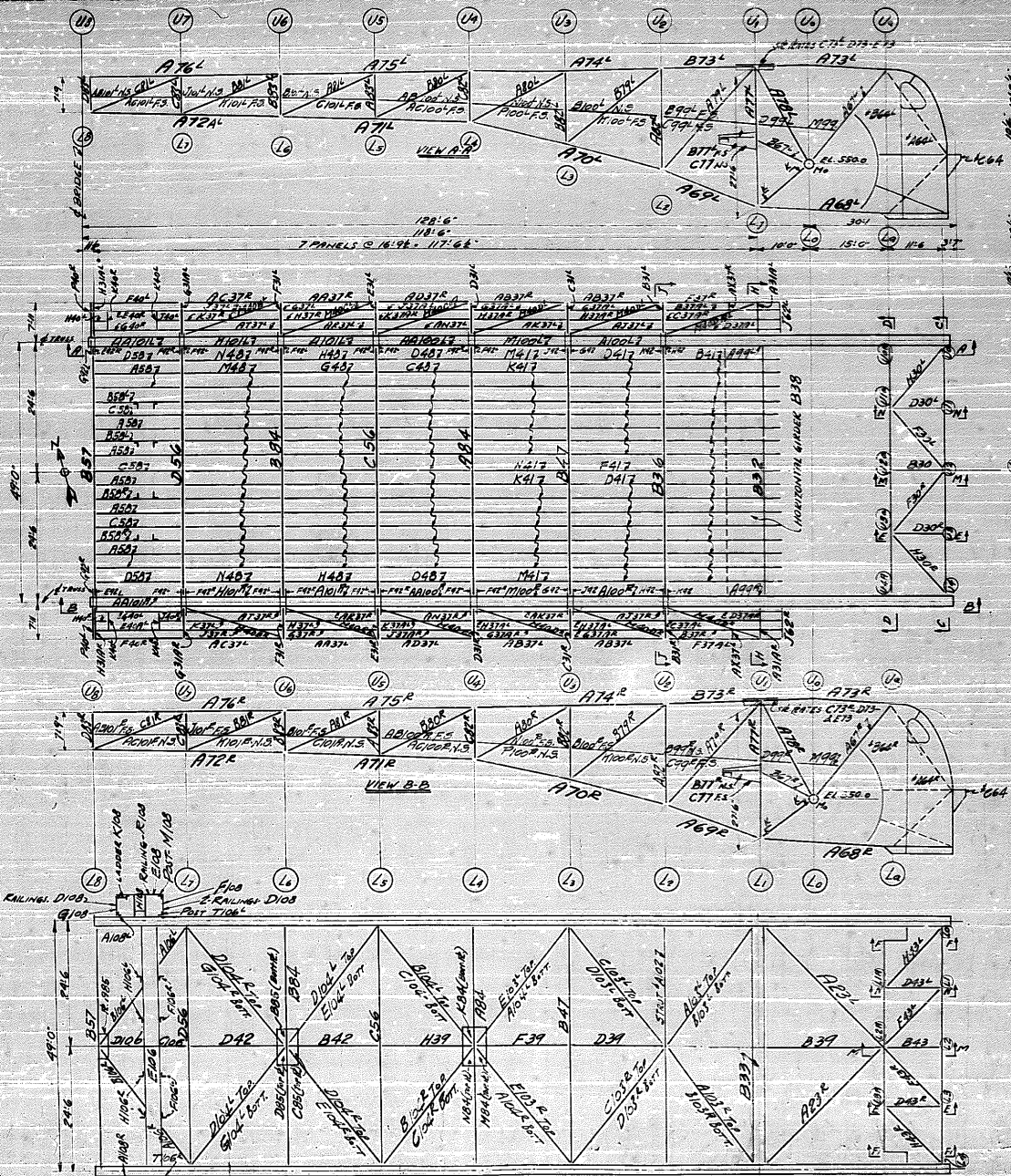
5075 F2







NOTE:-  
 FLOOR MARKS OF FLOOR PLATES  
 BETWEEN CURB & SIDEWALK  
 REFER TO SHEETS 99-100-101.



NOTE:  
 FLOOR MARKS AND MATCH MARKS FOR  
 THIS SIDE TO BE IN RED COLOR.  
 PANEL POINTS TO BE USED FOR  
 MATCH MARKS.

# EAST LEAF

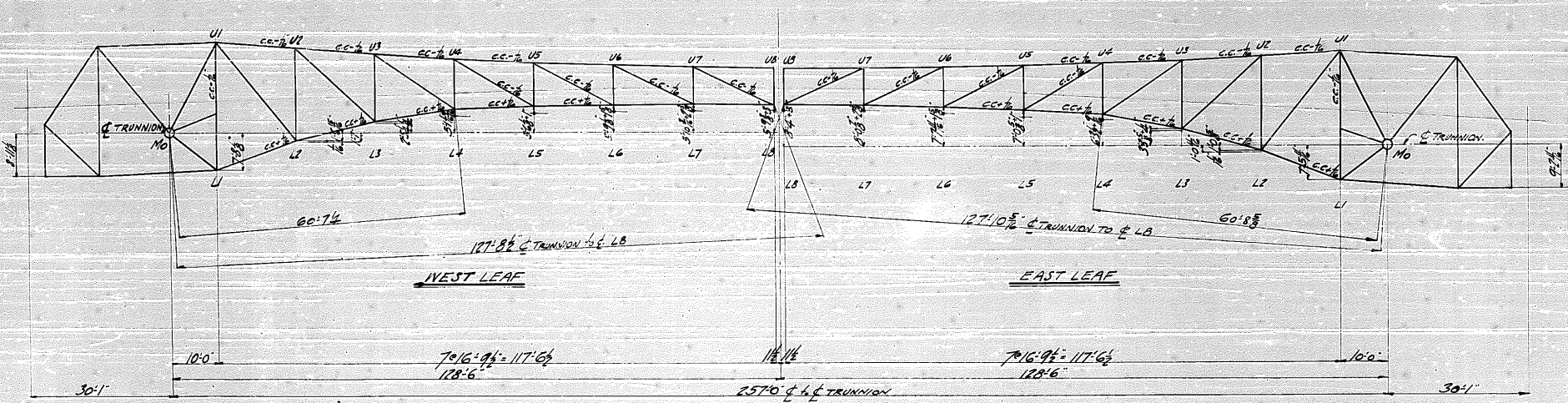
STATE OF ILLINOIS  
 DEPARTMENT OF PUBLIC WORKS AND BUILDINGS  
 DIVISION OF WATERWAYS, SPRINGFIELD, ILL.  
 MILWAUKEE BRIDGE COMPANY  
 MILWAUKEE, WISCONSIN

DOUBLE LEAF THROUGH BRIDGE  
 RUBY STREET, JOYET, ILL.  
 ERECTION DIAGRAM FOR EAST LEAF  
 STATE OF ILL., DIV. OF WATERWAYS

Scale	1" = 20'
Drawn by	F.V.
Checked by	J.L.
Approved by	
Date	11-30-24
Sheet No.	5075 E3







STATE OF ILLINOIS  
 DEPARTMENT OF PUBLIC WORKS & BUILDINGS  
 DIVISION OF WATERWAYS, SPRINGFIELD, ILL.

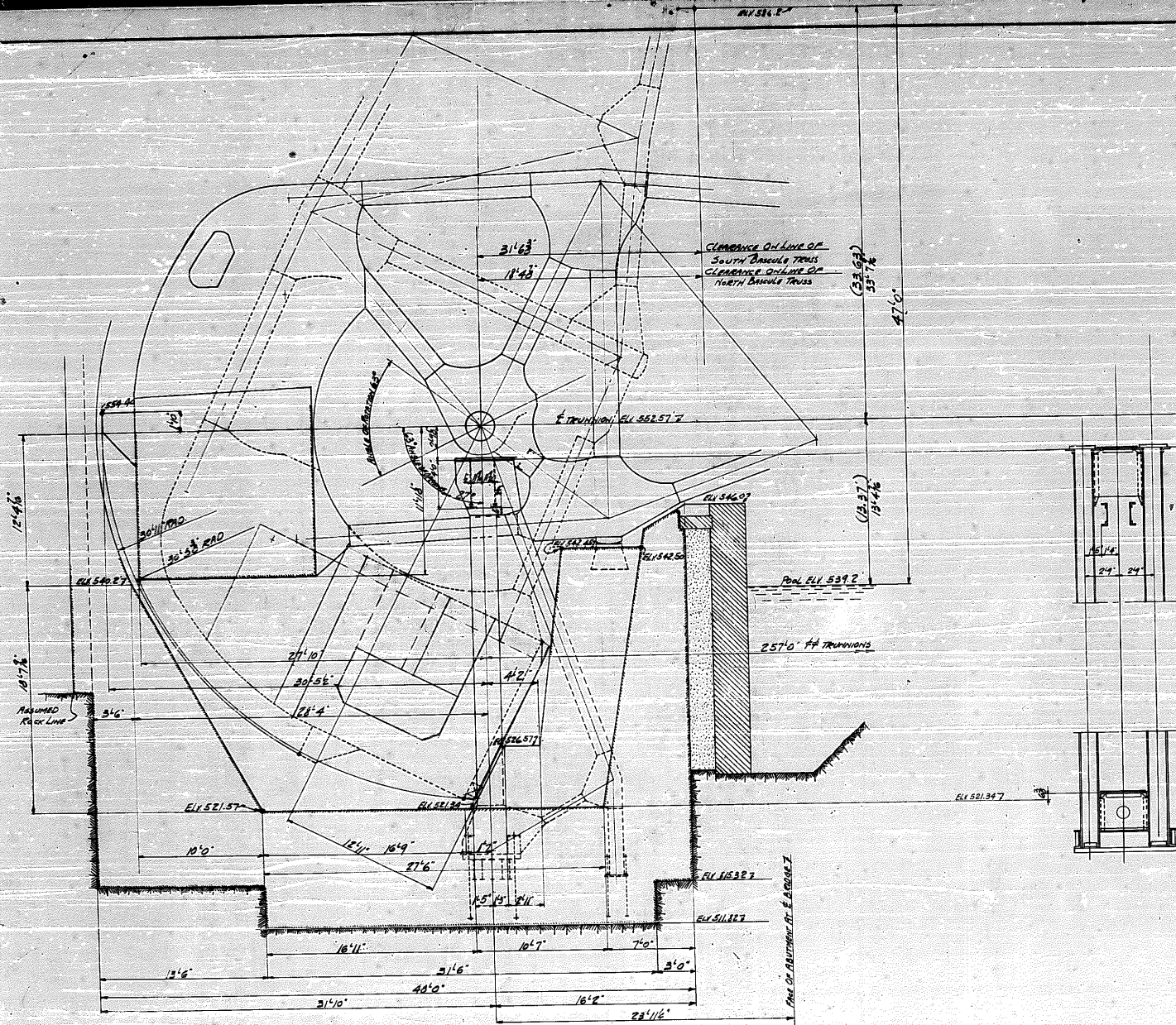
MILWAUKEE BRIDGE COMPANY  
 MILWAUKEE, WISCONSIN

OUTLINE OF TRUSS SHOWN TAKEN AT C OF ALL MEMBERS  
 CAMBER SHOWN IS FOR TOTAL DEAD LOAD DEFLECTION.

REVISIONS	DATE	BY	REASON
1			AXIAL LEAF TRUNNION BACULE BRACE
2			RUBY STREET, JOLIET, ILL.
3			CAMBER DIAGRAM
4			Specification: STATE OF ILL. DIV. OF WATERWAYS
5			Shop Plans
6			Field Plans
7			Notes
8			Open Holes
9			Made by A.G.R.
10			Checked by A.S.D.
11			Contract No.
12			Sheet No.
13			5075 E5
14			Project
15			Holes
16			Remarks







CLEARANCE DIAGRAM FOR WEST LEAF

STATE OF ILLINOIS  
 DEPARTMENT OF PUBLIC WORKS AND BUILDINGS  
 DIVISION OF WATERWAYS - SPRINGFIELD, ILL.

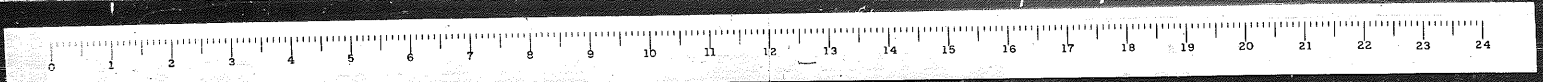
**MILWAUKEE BRIDGE COMPANY**  
 MILWAUKEE, WISCONSIN

REVISIONS	DESCRIPTION
1	DOUBLE LEAF TRUSSION BASCULE BRIDGE
2	RUBY STREET - JOLIET ILL.
3	WEST LEAF CLEARANCE DIAGRAM
4	SPECIFICATIONS - STATE OF ILL. DIV. OF WATERWAYS
5	SHOP PRINT
6	FIELD PRINT
7	
8	
9	
10	
11	Made by A.J.K.
12	Traced by S.O.T.
13	Checked by A.F. THOMPSON
14	

Contract No. 5074  
 Sheet No. 51

Rivets \_\_\_\_\_  
 Bolts \_\_\_\_\_  
 Gaskets \_\_\_\_\_

STEEL WORK  
 STRENGTH  
 AND SECURITY



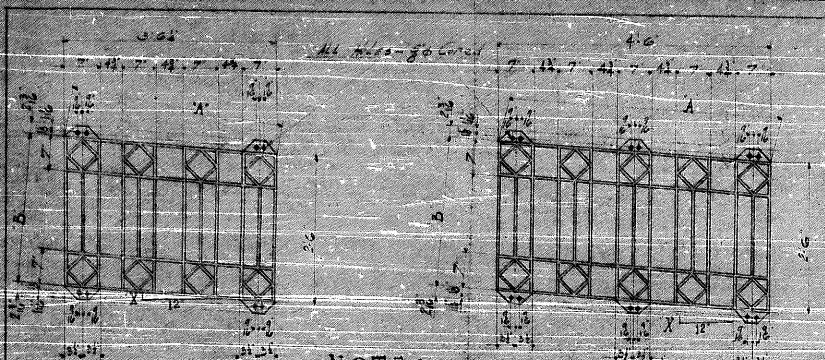












**NOTE:**  
ALL PANELS TO BE CAST IN MALLEABLE IRON

**SCHEDULE**

No.	Mark	A	B	X	Y	Mark	A	B	X	Y
1	N1	2.0	1.5	5	31	31	2.0	2.0	5	31
2	N2	2.0	4	32	A	32	2.0	4	32	A
3	N3	2.0	4	33	A	33	2.0	4	33	A
4	N4	2.0	4	34	A	34	2.0	4	34	A
5	N5	2.0	4	35	B	35	2.0	4	35	B
6	N6	2.0	4	36	C	36	2.0	4	36	C
7	N7	2.0	4	37	C	37	2.0	4	37	C
8	N8	2.0	4	38	B	38	2.0	4	38	B
9	N9	2.0	4	39	A	39	2.0	4	39	A
10	N10	2.0	4	40	D	40	2.0	4	40	D
11	N11	2.0	4	41	D	41	2.0	4	41	D
12	N12	2.0	4	42	D	42	2.0	4	42	D
13	N13	2.0	4	43	E	43	2.0	4	43	E
14	N14	2.0	2	51	A	51	2.0	2	51	A
15	N15	2.0	1	51	A	51	2.0	1	51	A

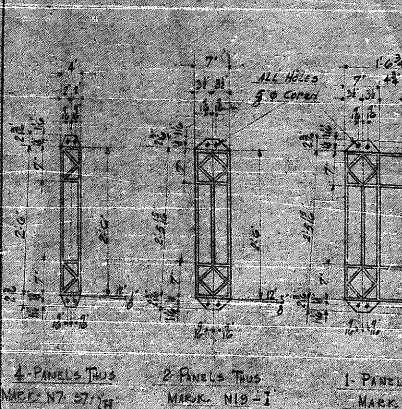
**SCHEDULE**

No.	Mark	A	B	X	Y	No.	Mark	A	B	X	Y
1	N16	2.0	1.5	5	31	1	S14	4.0	2.0	5	31
2	N15	2.0	2.5	3	31	2	S15	4.0	2.0	3	31
3	N16	2.0	2.5	3	31	3	S16	4.0	2.0	3	31
4	N17	2.0	2.5	3	31	4	S17	4.0	2.0	3	31
5	N18	2.0	2.5	3	31	5	S18	4.0	2.0	3	31

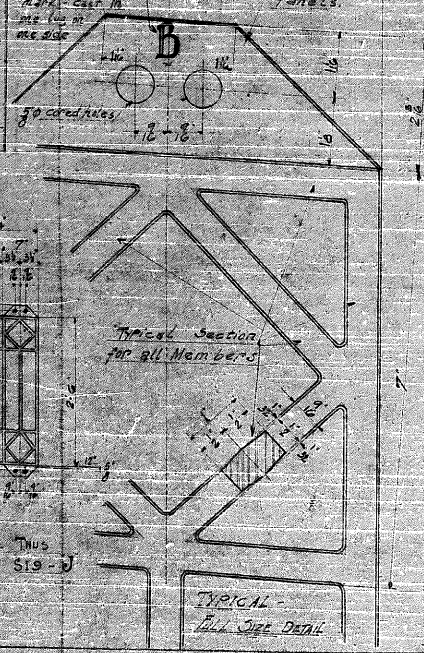
54-N PANELS  
54-S PANELS  
100-4.0 Panels - total - req'd.

13-N PANELS  
15-S PANELS  
25-4.0 Panels - total - req'd.

NOTE: Each panel to be cast in malleable iron. All holes go across.

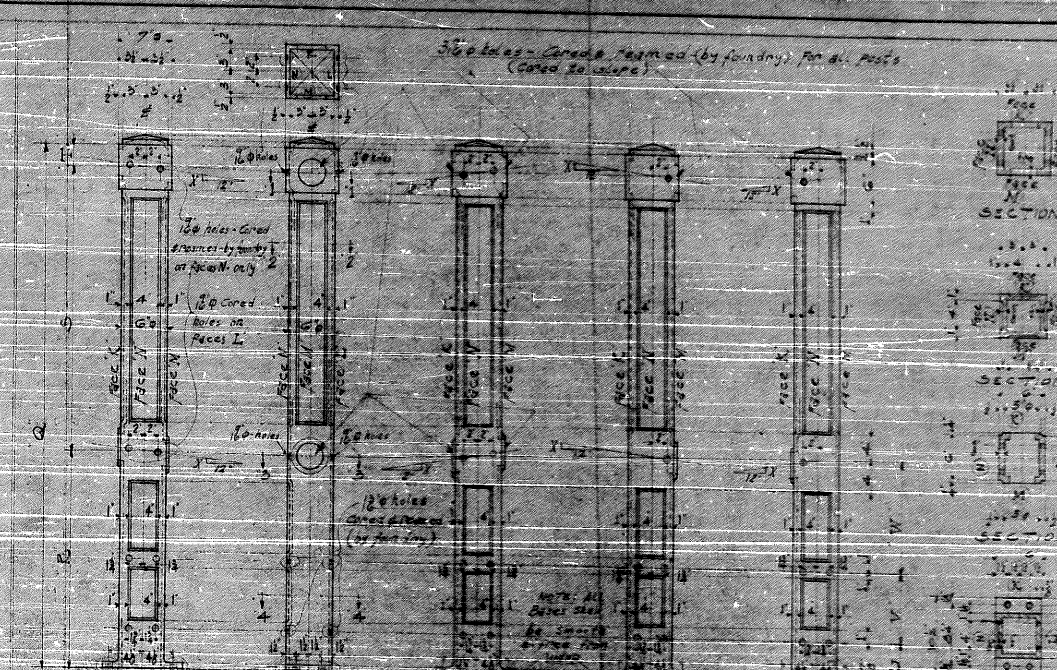


4 PANELS THIS MARK N7-37, N8-38  
2 PANELS THIS MARK N12-1  
1 PANEL THIS MARK S19-1



TYPICAL ALL SIZE DETAIL

END VIEW



POST - A  
POST - B  
POST - C  
POST - D

10 holes - Cast in place by masonry  
12 holes - Cast in place by masonry

Post	Mark	Area	Perimeter	Volume	Weight
POST A	1	44	124	11.5	11.5
POST B	1	12	36	3.6	3.6
POST C	1	28	72	7.2	7.2
POST D	1	17	44	4.4	4.4
POST A	2	17	44	4.4	4.4
POST B	2	35	88	8.8	8.8
POST C	2	35	88	8.8	8.8
POST D	2	35	88	8.8	8.8
POST A	3	30	76	7.6	7.6
POST B	3	10	28	2.8	2.8
POST C	3	10	28	2.8	2.8
POST D	3	10	28	2.8	2.8
POST A	4	35	88	8.8	8.8
POST B	4	35	88	8.8	8.8
POST C	4	35	88	8.8	8.8
POST D	4	35	88	8.8	8.8

44 POSTS TO BE REQUIRED

**GENERAL NOTES**  
All posts to be cast in malleable iron. All holes go across. Posts to be cast in place by masonry.

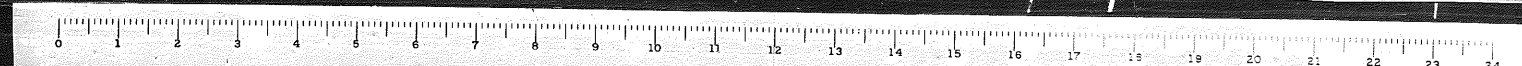
STATE OF ILLINOIS  
Dept. of Public Works & Buildings  
Division of Waterways  
Springfield, Ill.

**MILWAUKEE BRIDGE COMPANY**  
MILWAUKEE, WISCONSIN

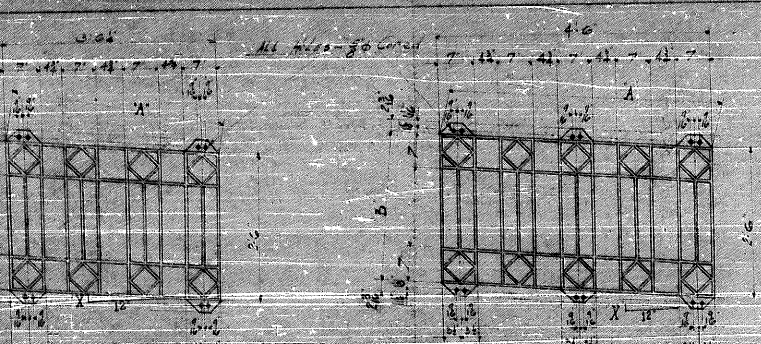
REVISIONS:  
1. 11/15/24  
2. 12/15/24  
3. 1/15/25  
4. 2/15/25  
5. 3/15/25  
6. 4/15/25  
7. 5/15/25  
8. 6/15/25  
9. 7/15/25  
10. 8/15/25  
11. 9/15/25  
12. 10/15/25  
13. 11/15/25  
14. 12/15/25  
15. 1/15/26  
16. 2/15/26  
17. 3/15/26  
18. 4/15/26  
19. 5/15/26  
20. 6/15/26  
21. 7/15/26  
22. 8/15/26  
23. 9/15/26  
24. 10/15/26  
25. 11/15/26  
26. 12/15/26  
27. 1/15/27  
28. 2/15/27  
29. 3/15/27  
30. 4/15/27  
31. 5/15/27  
32. 6/15/27  
33. 7/15/27  
34. 8/15/27  
35. 9/15/27  
36. 10/15/27  
37. 11/15/27  
38. 12/15/27  
39. 1/15/28  
40. 2/15/28  
41. 3/15/28  
42. 4/15/28  
43. 5/15/28  
44. 6/15/28  
45. 7/15/28  
46. 8/15/28  
47. 9/15/28  
48. 10/15/28  
49. 11/15/28  
50. 12/15/28

Contract No. 5085  
Sheet No. W2

APPROVED BY: [Signature]  
DATE: 10/31/24







NOTE:

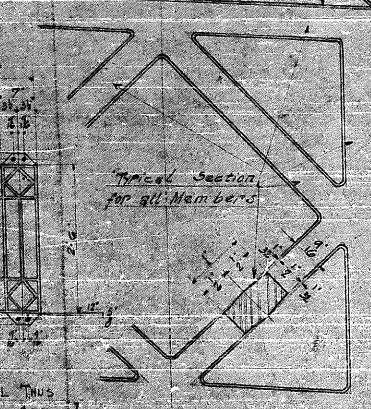
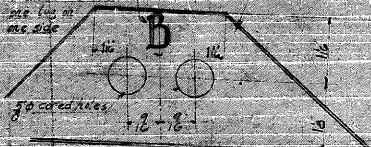
ALL PANELS TO BE CAST IN MALLEABLE IRON

**SCHEDULE**

MARK	A	B	C	MARK	A	B	C
N1	2'-0"	2'-6"	3'-0"	N1	4'-0"	4'-6"	5'-0"
N2	2'-0"	2'-6"	3'-0"	N2	4'-0"	4'-6"	5'-0"
N3	2'-0"	2'-6"	3'-0"	N3	4'-0"	4'-6"	5'-0"
N4	2'-0"	2'-6"	3'-0"	N4	4'-0"	4'-6"	5'-0"
N5	2'-0"	2'-6"	3'-0"	N5	4'-0"	4'-6"	5'-0"
N6	2'-0"	2'-6"	3'-0"	N6	4'-0"	4'-6"	5'-0"
N7	2'-0"	2'-6"	3'-0"	N7	4'-0"	4'-6"	5'-0"
N8	2'-0"	2'-6"	3'-0"	N8	4'-0"	4'-6"	5'-0"
N9	2'-0"	2'-6"	3'-0"	N9	4'-0"	4'-6"	5'-0"
N10	2'-0"	2'-6"	3'-0"	N10	4'-0"	4'-6"	5'-0"
N11	2'-0"	2'-6"	3'-0"	N11	4'-0"	4'-6"	5'-0"
N12	2'-0"	2'-6"	3'-0"	N12	4'-0"	4'-6"	5'-0"
N13	2'-0"	2'-6"	3'-0"	N13	4'-0"	4'-6"	5'-0"
N14	2'-0"	2'-6"	3'-0"	N14	4'-0"	4'-6"	5'-0"
N15	2'-0"	2'-6"	3'-0"	N15	4'-0"	4'-6"	5'-0"

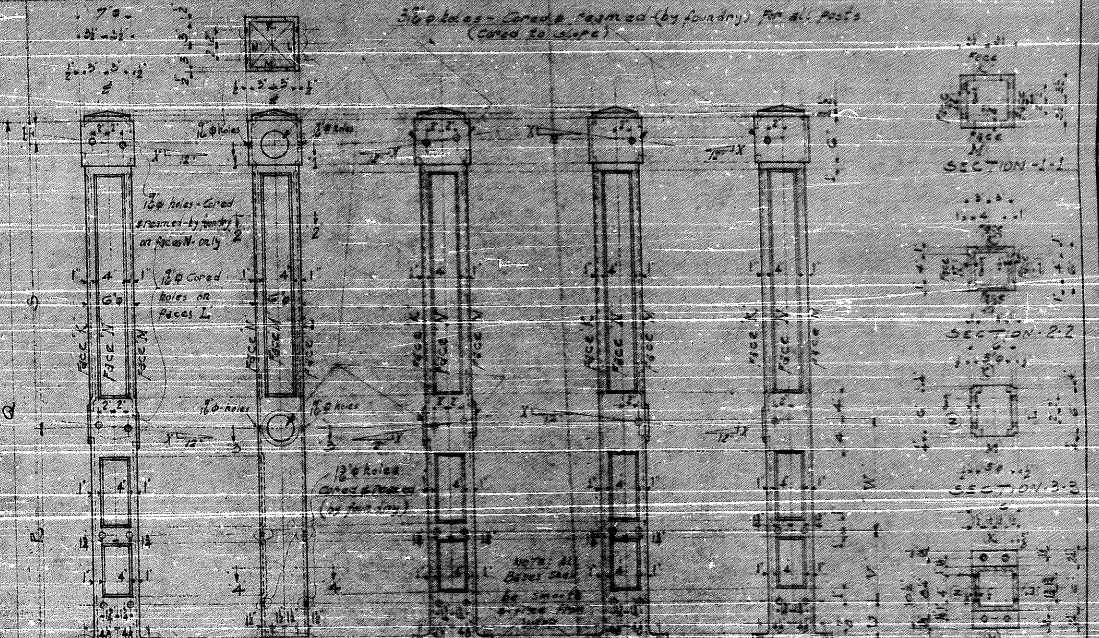
13-N Panels      15-3-Panels

13-A-6 Panels - total - Paged



TYPICAL  
Full Size Detail

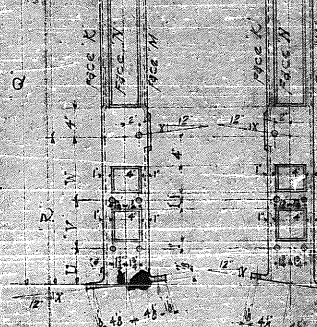
END VIEW



**SCHEDULE**

POST	MARK	TYPE	MARK	TYPE
POST-A	1	1	1	1
POST-B	1	1	1	1
POST-C	1	1	1	1
POST-D	1	1	1	1

180 holes - Corus Framed (by foundry) for all Posts (Corus to center)



POST-E      POST-F

POST	MARK	TYPE	MARK	TYPE
POST-A	1	1	1	1
POST-B	1	1	1	1
POST-C	1	1	1	1
POST-D	1	1	1	1

**GENERAL NOTES**

ALL POSTS TO BE CAST IN MALLEABLE IRON

ALL HOLES - CORUS FRAMED (BY FOUNDRY) FOR ALL POSTS (CORUS TO CENTER)

180 HOLES - CORUS FRAMED (BY FOUNDRY) FOR ALL POSTS (CORUS TO CENTER)

ALL PANELS TO BE CAST IN MALLEABLE IRON

STATE OF ILLINOIS  
Dept. of Public Works & Buildings  
Division of Waterways  
Springfield, Ill.

**MILWAUKEE BRIDGE COMPANY**  
MILWAUKEE, WISCONSIN

JOHN LEONARD BRIDGE STAGE  
L. C. BRIDGE - WISCONSIN

DESIGNED BY - DEAN W. BROWN  
SUPERVISOR - J. W. BROWN  
SHOP PAINT - J. W. BROWN  
FIELD PAINT - J. W. BROWN

Drawn by: J. W. BROWN  
Checked by: J. W. BROWN

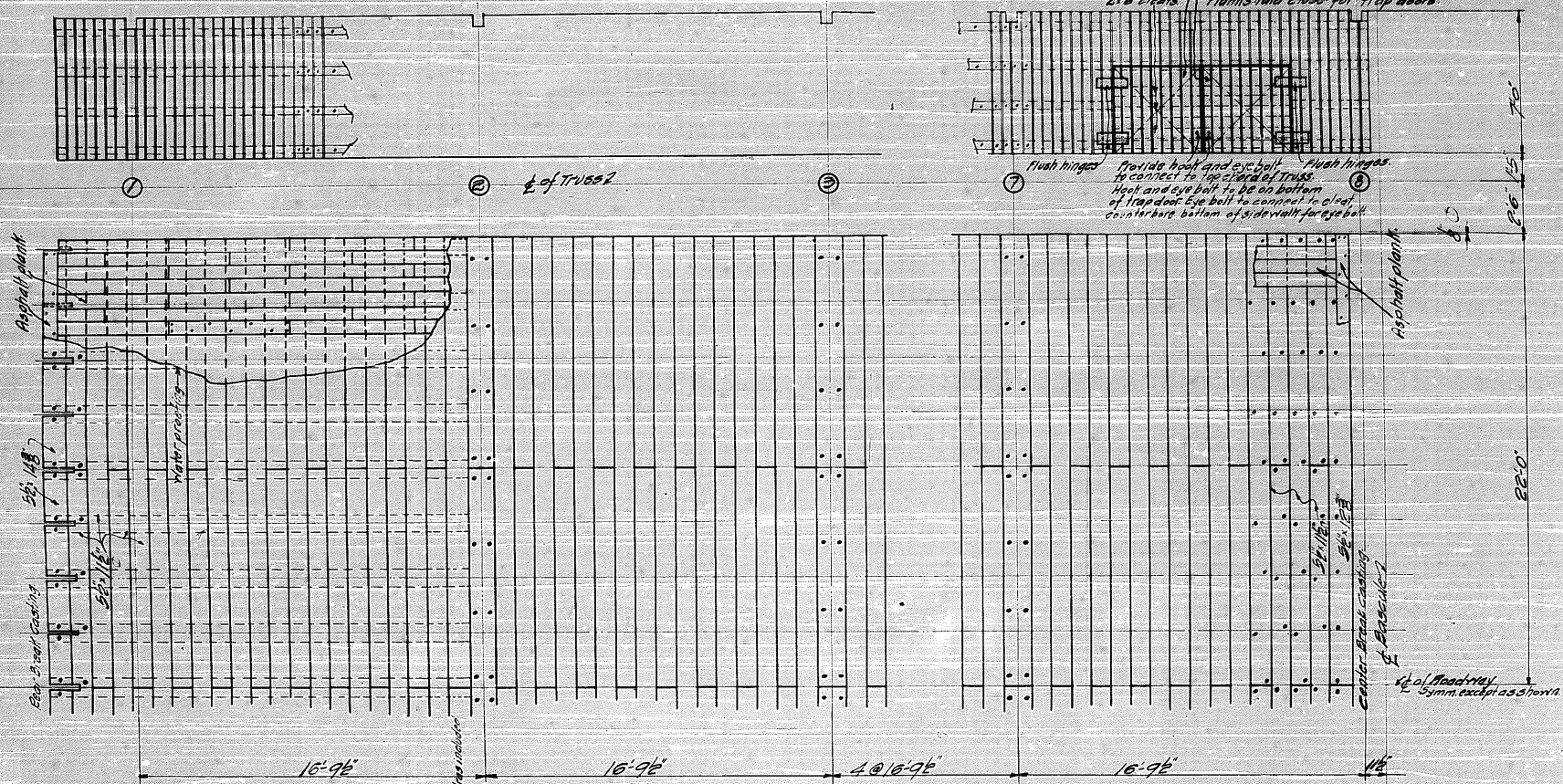
5085 W2

STEEL BRIDGE STRENGTH AND SECURITY





NOTE: TRAP DOORS ON EAST LEAF ONLY  
OVER CENTER LOCK MOTOR & REDUCE  
2" x 4" PLANKS PLANKS Laid cross for trap doors.



SEE SPECIFICATIONS FOR ALL MATERIAL. All timber to be dense select structural grade.

Quantity	Finished Size	Length	Material	LOCATION
24	5 1/2" x 14 3/4"	2'-6 1/2"	Timber for 363	Subplank @ rear break in Redux
4	do	2'-7"		
232	5 1/2" x 11 1/2"	11'-2 1/2"		Subplank panels #1 to #3
116	do	2'-0"		
228	do	2'-11 1/2"		
4	5 1/2" x 12 1/2"	2'-0"		Subplank @ center break
4	4 1/2" x 15 1/2"	2'-0"		Subplank @ floor beams west leaf
2	do	11'-2 1/2"		" "
1	do	2'-6"		" 2 East leaf
1	do	11'-2 1/2"		" "
2	do	2'-11 1/2"		" 2 West leaf
2	do	2'-11 1/2"		" 2 East leaf
2	5 1/2" x 10 1/2"	2'-6"		" 2 West leaf
2	do	11'-2 1/2"		" "
2	do	2'-6"		" 2 East leaf
2	do	11'-2 1/2"		" "
2	do	2'-11 1/2"		" 2 West leaf
2	do	2'-11 1/2"		" 2 East leaf
34	4" x 9 1/2"	20'-8"		Nailer on stringers, rear break to #2

Quantity	Finished Size	Length	Material	LOCATION
1020	1 3/4" x 5 1/2"	7'-0"	Timber for 363	Side walk plank
120	2 1/2" x 3 1/2"	16'-0"		nailer
4	2 1/2" x 3 1/2"	16'-0"		nailer for 8" stringer
Level in field to take care of difference in grade				
ASPHALT PLANK & WATER PROOFING				
2670	8" x 16"	6'-0"		Asphalt plank Roadway
Order saturated fabric water proofing to asphalt cement for mopping				

Quantity	Description	Location
1100	Carriage bolts 5/8" x 4 1/2"	Side walk nailers
400	5/8" x 5 1/2"	Subplank to floor beams
3700	3/4" x 6"	stringers
1800	3/4" x 10 1/2"	2" x 4" nailer
1100	Steel washers 3/4" x 3" x 1/2"	at 1/2" hole in 2" x 4"
26500	30 d nails	asphalt plank
4600	20 d nails	side walk plank
190	1 1/4" x 10" Edwood screws	1/2" to subwalk
order nails for nailing water proofing to plank @ curb		
Hard pan for trap doors		
8	4" x 4" hinges with screws	
4	Eye bolts with hooks	

STATE OF ILLINOIS  
DEPARTMENT OF PUBLIC WORKS & BUILDINGS  
DIVISION OF WATERWAYS - SPRINGFIELD ILL.

MILWAUKEE BRIDGE COMPANY  
MILWAUKEE, WISCONSIN

REVISIONS:

1	1/16/34	POUND LEAF TRUSS ON ARCADE BRIDGE
2		ADD SEWER & GULCH ILL
3		BRIDGE PLANS & SIDEWALK
4		Spec Sections STATE OF ILL. DIVISION OF WATERWAYS
5		Shop Plans
6		Field Plans
7		Rivets
8		Open Holes
9		AS NOTED
10		Made by 2/27/34
11		Traced by 2/27/34
12		Checked by 2/27/34
13		
14		

Contract No. 5092  
Sheet No. 1

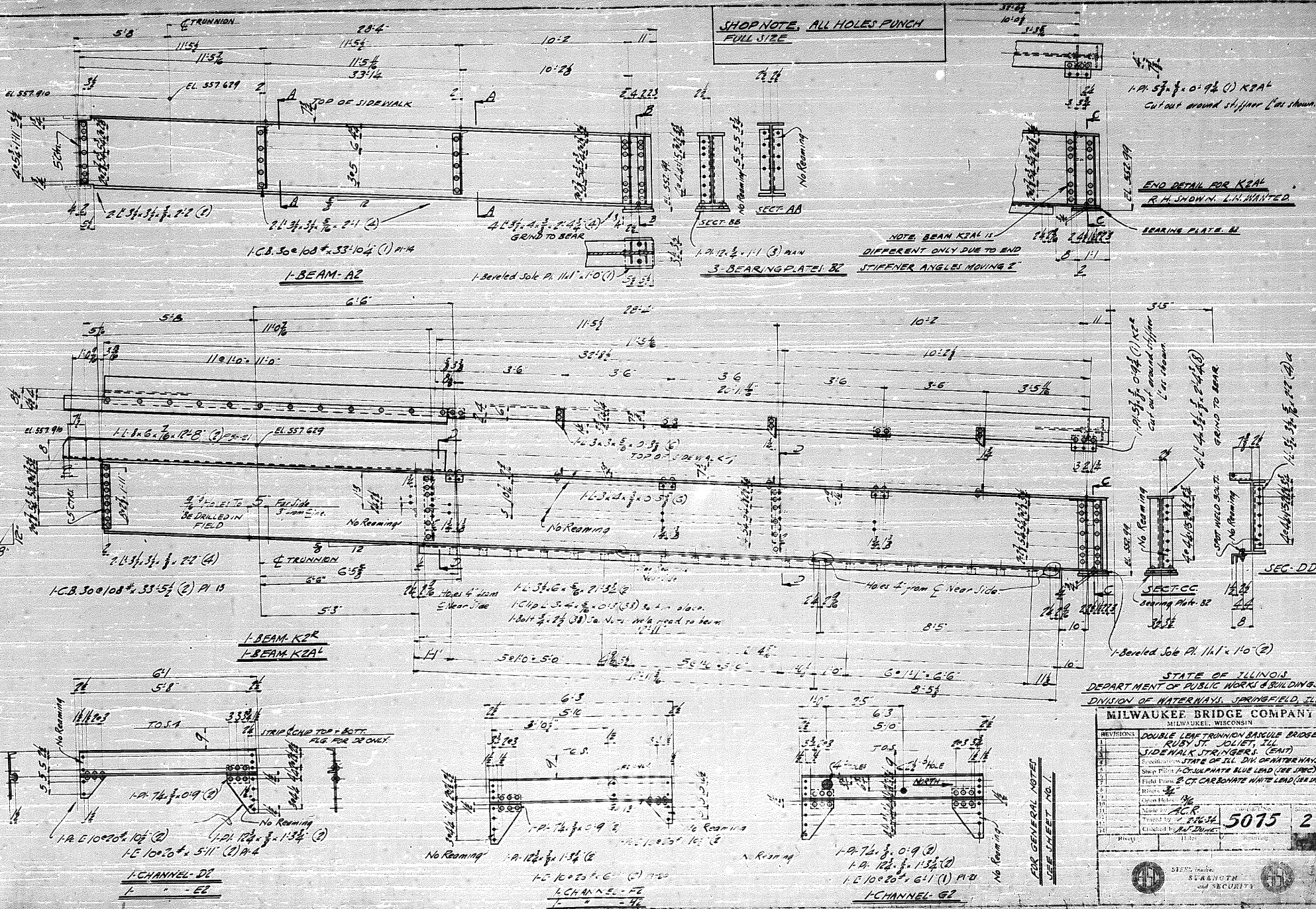
Rivets  
Notes  
Riveting

STEEL means STRENGTH and SECURITY

Timber cut 5/8" from curb and 5 1/2" x 11 1/2" changed to 5 1/2" x 12"



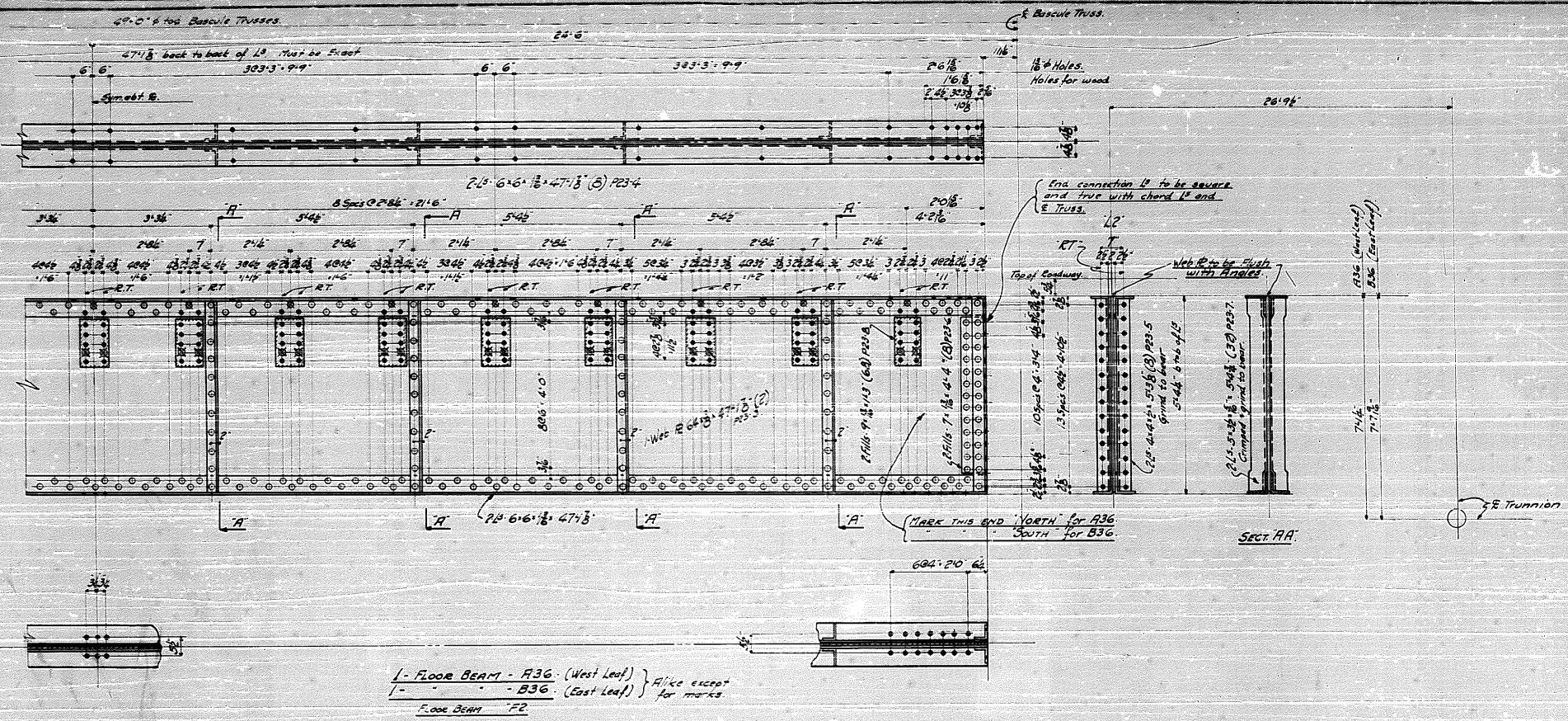












1 - FLOOR BEAM - A36. (West Leaf)  
 1 - FLOOR BEAM - B36. (East Leaf)  
 } A like except for marks  
 FLOOR BEAM "F2"

Notes:  
 For general notes see sheet #3

STATE OF ILLINOIS  
 DEPARTMENT OF PUBLIC WORKS - BUILDINGS  
 DIVISION OF WATERWAYS, SPRINGFIELD, ILL.

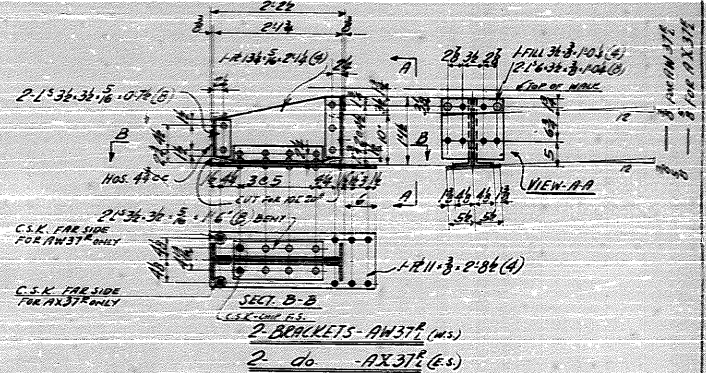
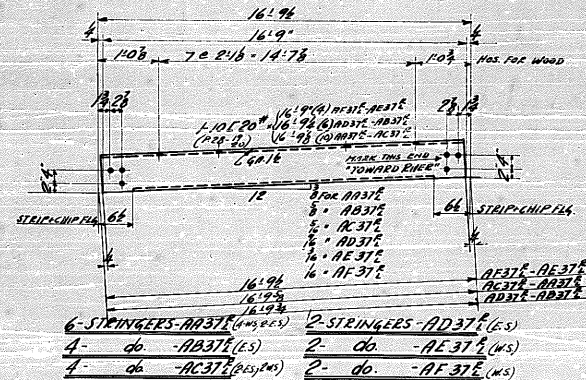
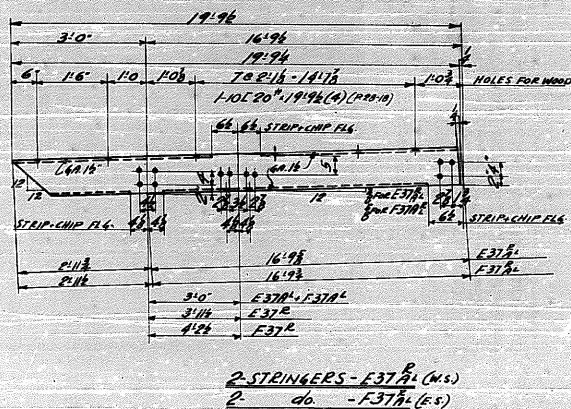
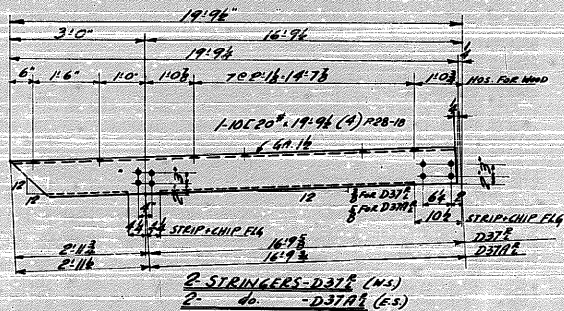
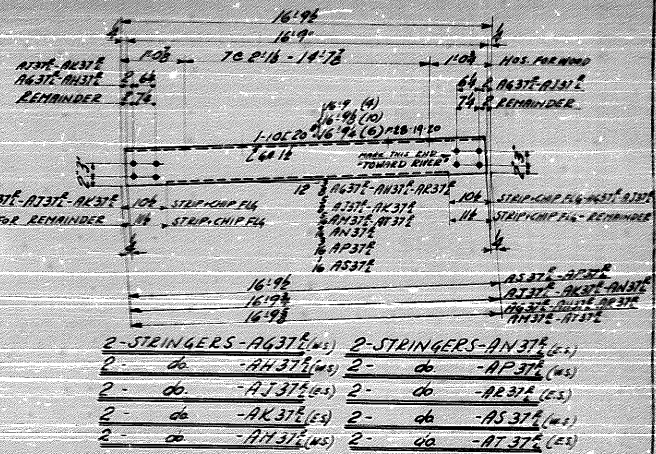
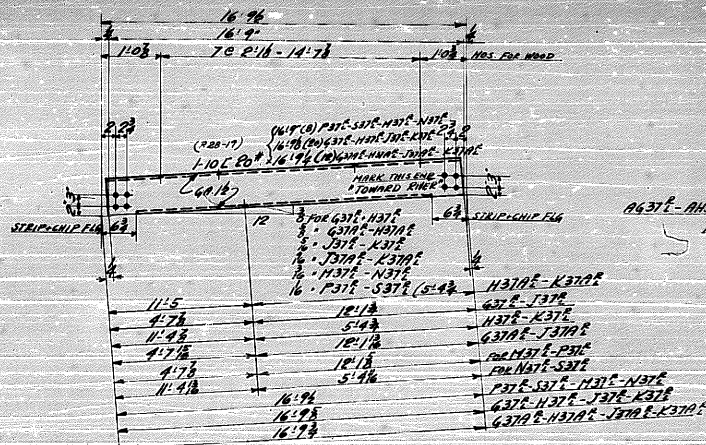
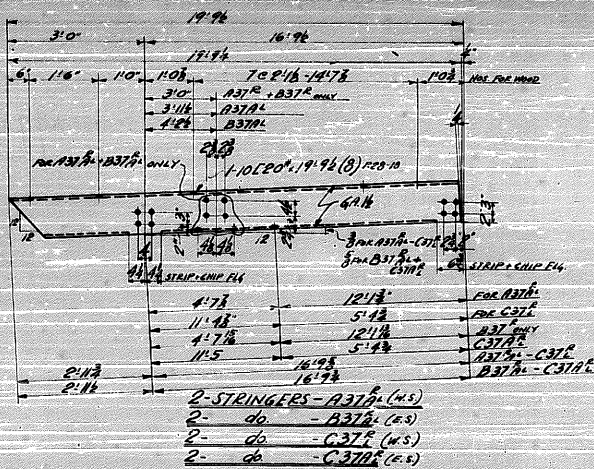
MILWAUKEE BRIDGE COMPANY  
 MILWAUKEE, WISCONSIN

REVISIONS	DESCRIPTION
1	DOUBLE LEAF TRUSS AND BAScule BRIDGE
2	FLOOR BEAM "F2" (East West Leaf)
3	STATE OF ILL. DIVISION OF WATERWAYS
4	Shop Price / Coat Sulphate Blue Lead (see spec.)
5	2 Coats Carbonate white lead (see spec.)
6	Open Work 1/8" Unless Noted
7	Made by H. Drier
8	Traced by
9	Checked by R. D. Duns

5075 36







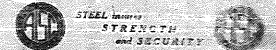
FOR GENERAL NOTES SEE SHEET 3  
 ALL EDGE DISTANCES 1/8" UNLESS NOTED  
 PUNCH ALL OPEN HOLES FULL SIZE

STATE OF ILLINOIS  
 DEPARTMENT OF PUBLIC WORKS AND BUILDINGS  
 DIVISION OF WATERWAYS - SPRINGFIELD, ILL.

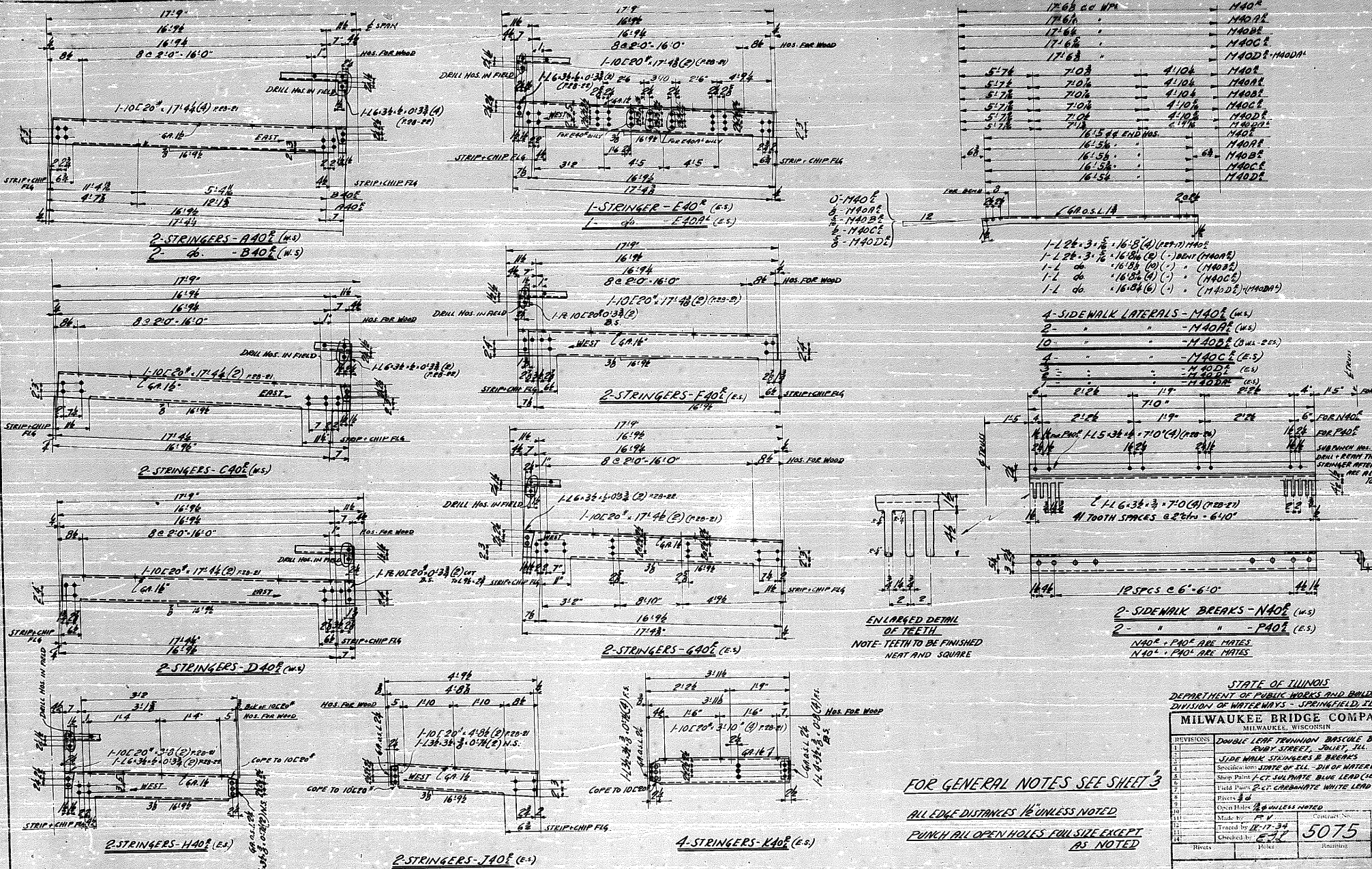
MILWAUKEE BRIDGE COMPANY  
 MILWAUKEE, WISCONSIN

PROVISIONS	DOUBLE LEAF TRIMMION BRISOLE BRIDGE
1	SIDEWALK STRINGERS & BRACKETS
2	SPACING STATE OF ILL. DIM. OF WATERWAYS
3	Slope Paint 1/2 CT. ULTIMATE BLUE LEAD (USE LAFAY)
4	Field Paint 1/2 CT. CARBONATE WHITE LEAD (-)
5	Prime 1/2
6	Final Holes 1/2
7	Made by P & B
8	Traced by R-12-96
9	Checked by E-7

5075 37







STATE OF WISCONSIN  
 DEPARTMENT OF PUBLIC WORKS AND BUILDINGS  
 DIVISION OF WATERWAYS - SPRINGFIELD ILL  
**MILWAUKEE BRIDGE COMPANY**  
 MILWAUKEE, WISCONSIN

REVISIONS	DOUBLE LEAF TRUSS BRASCLE BRIDGE	EVERY STREET, DELFT, ILL
1	SIDE WALK STRINGERS & BRACKS	Specified by STATE OF ILL - DIV OF WATERWAYS
2	Shop Plans	2 CT SULPHATE BLUE LEAD (SEE SPECS)
3	Field Plans	2 CT CARBONATE WHITE LEAD (SEE SPECS)
4	Fitters	
5	Open Holes	UNLESS NOTED
6	Made by	Contract No.
7	Treated by	5075
8	Checked by	40

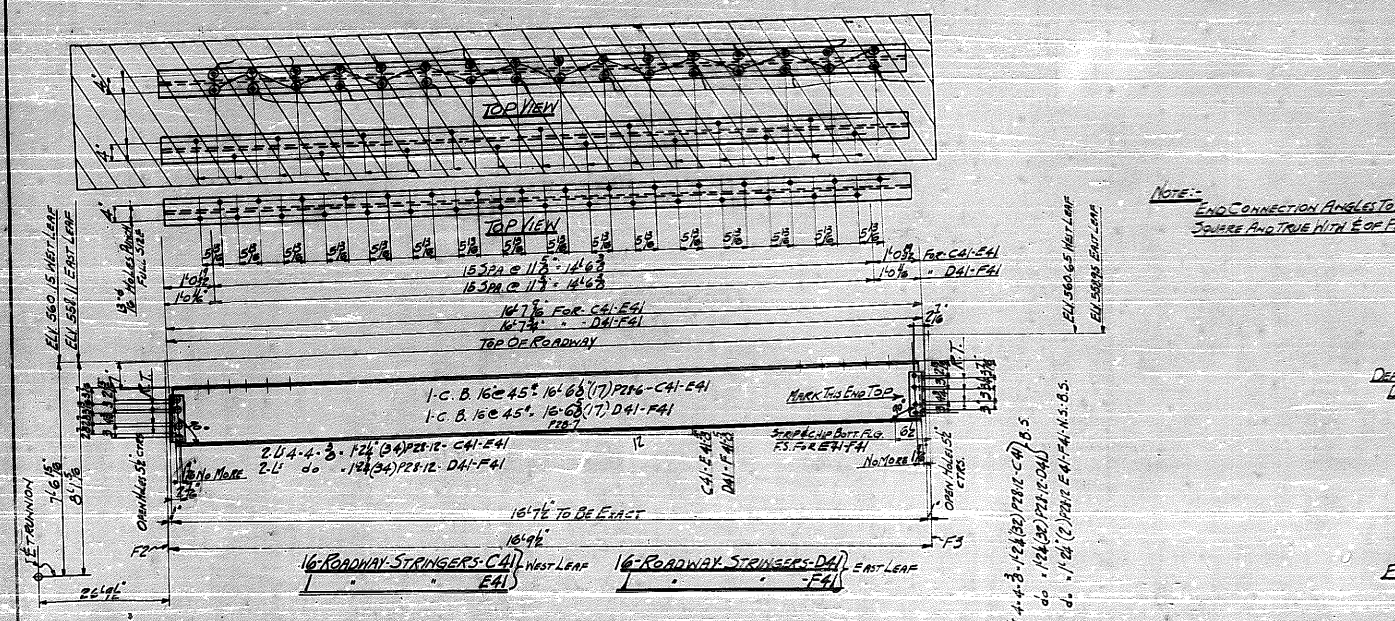
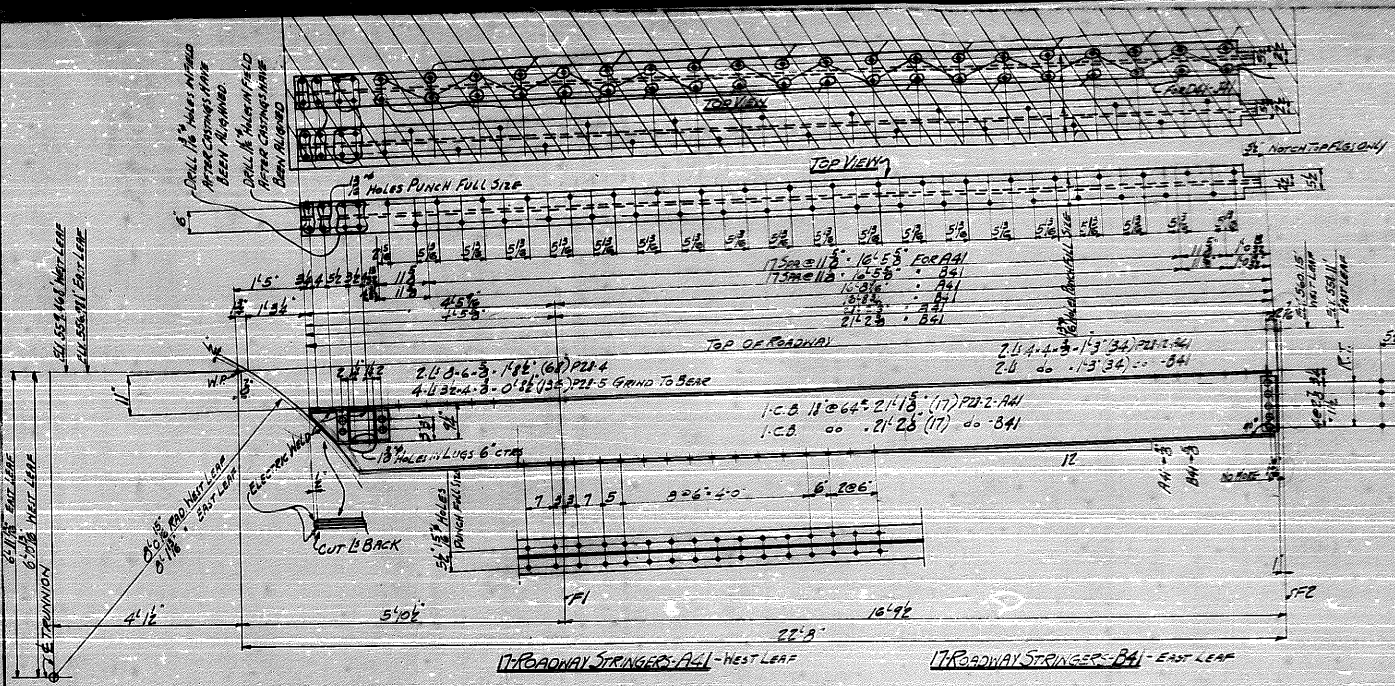
**FOR GENERAL NOTES SEE SHEET 3**

ALL EDGE DISTANCES 1/8" UNLESS NOTED

PUNCH ALL OPEN HOLES FULL SIZE EXCEPT AS NOTED







NOTE:  
END CONNECTION ANGLES TO BE  
SQUARE AND TRUE WITH E/O OF BEAMS

STATE OF ILLINOIS  
DEPARTMENT OF PUBLIC WORKS AND BUILDINGS  
DIVISION OF HIGHWAYS - SPRINGFIELD, ILL.

MILWAUKEE BRIDGE COMPANY  
MILWAUKEE, WISCONSIN

REVISIONS	DESCRIPTION
1	DOUBLE LEAF TRUSS BRIDGE
2	RUBY STREET, JOLIET, ILL.
3	ROADWAY STRINGERS - PHASE I - LEAF E & F
4	STATE OF ILL. DIVISION OF HIGHWAYS
5	1 CT. SULPHUR BLUE LEAD (SEE SPEC)
6	2 CT. CARBON WHITE LEAD (SEE SPEC)

15% UNLESS NOTED

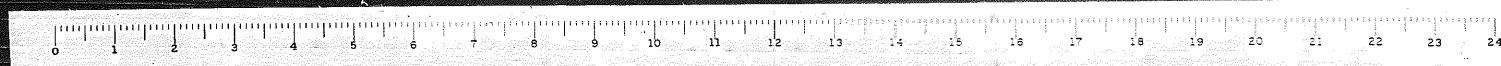
Scale: 1/4" = 1'-0"

Checked by: A.T. DUNE

5075

41

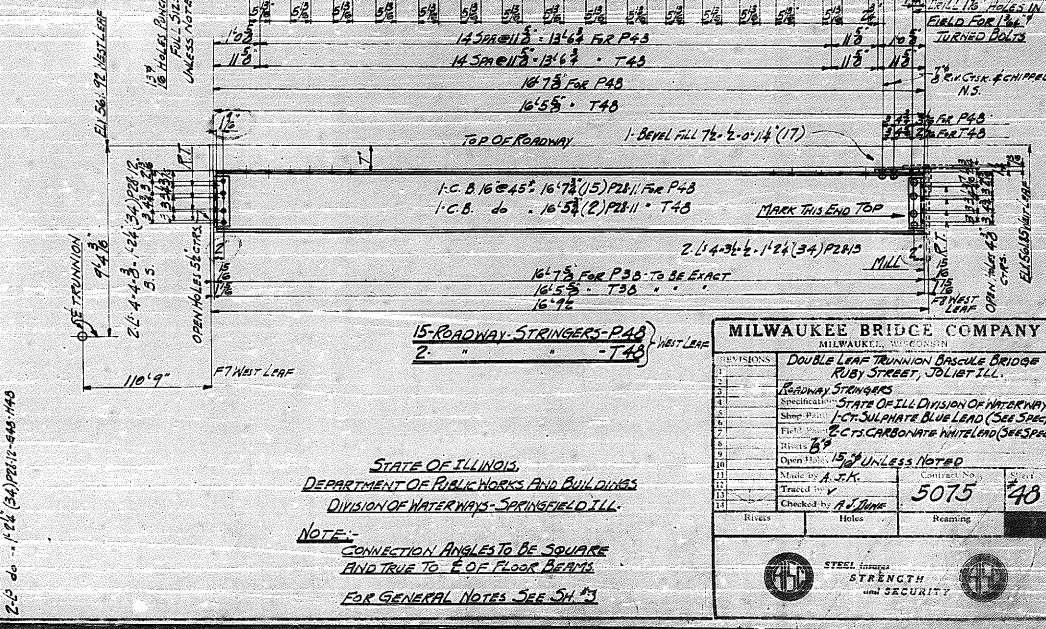
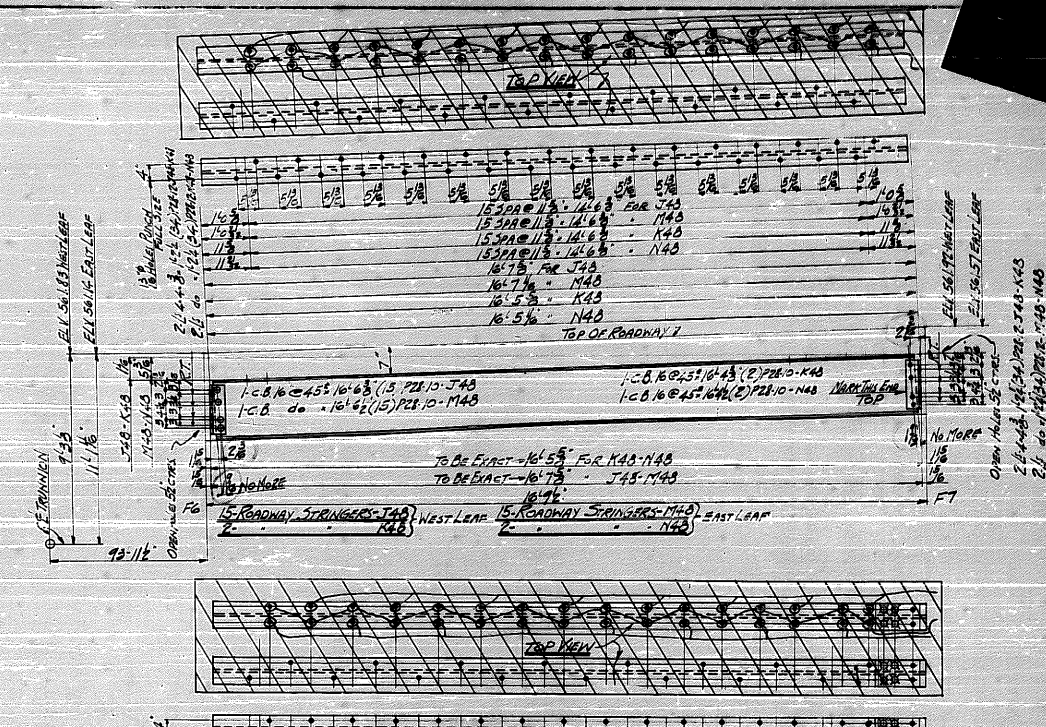
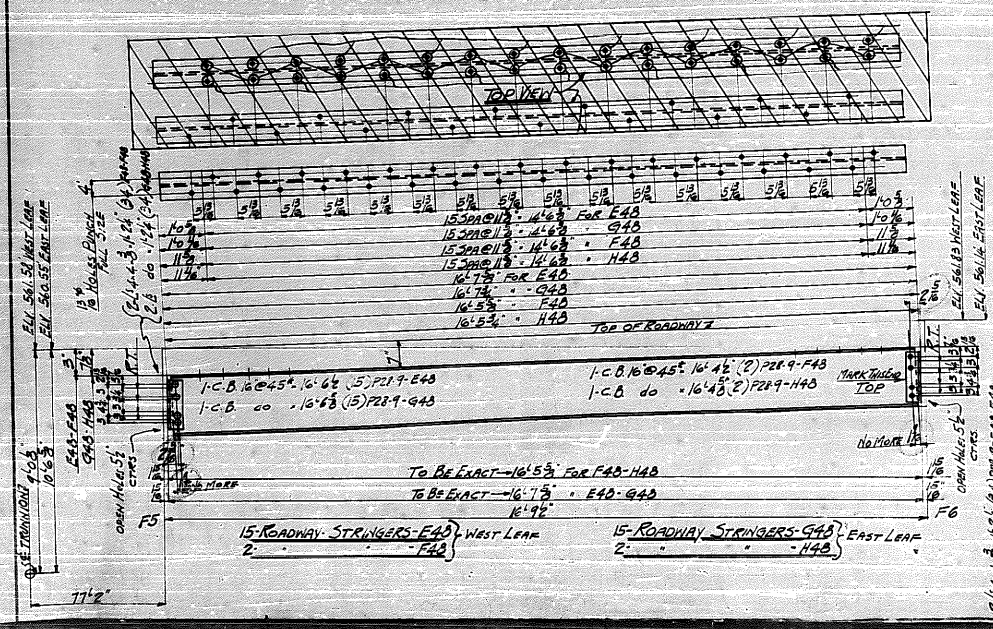
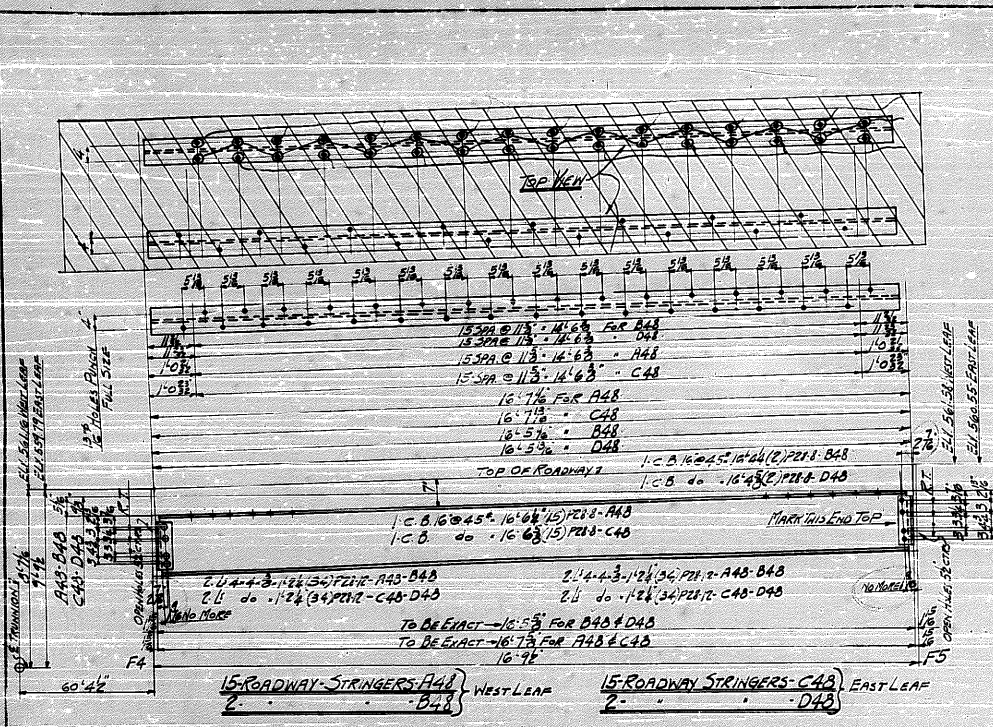
FOR GENERAL NOTES SEE SH-3







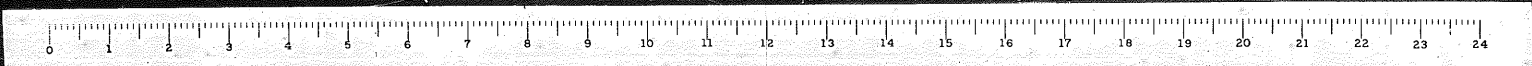




STATE OF ILLINOIS  
 DEPARTMENT OF PUBLIC WORKS AND BUILDINGS  
 DIVISION OF WATERWAYS - SPRINGFIELD, ILL.

NOTE:  
 CONNECTION ANGLES TO BE SQUARE  
 AND TRUE TO F.O.F. FLOOR BEAMS  
 FOR GENERAL NOTES SEE SH. 43

REVISIONS		MILWAUKEE BRIDGE COMPANY MILWAUKEE, WISCONSIN	
1	DOUBLE LEAF TRUNNION BASCULE BRIDGE	RUBY STREET, JOLIET, ILL.	
2	ROADWAY STRINGERS		
3	Specimens	STATE OF ILL. DIVISION OF WATERWAYS	
4	Shop Draw	ACT. SULPHATE BLUE LEAD (SEE SPEC)	
5	Field Notes	ACT. CARBONATE WHITE LEAD (SEE SPEC)	
6	Revised		
7	Open Shop	15% UNLESS NOTED	
8	Made by A. J. K.	Checked by A. J. K.	
9	Traced by		
10	Checked by A. J. K.		
11			
12			
13			
14			
15			
16			
17			
18			
19			
20			
21			
22			
23			
24			









490' E to E of Bascule Trusses

22.6'

E Bascule Truss

47'0" Back to Back of LS. must be exact

35 Spcs @ 3'13" P19"

35 Spcs @ 3'13" P19"

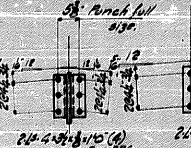
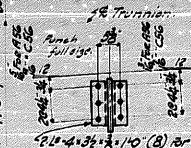
65 Spcs @ 3'13" P19" 65 Spcs @ 2'9 1/2" P19" 45 Spcs @ 2'0" P19" 65 Spcs @ 2'9 1/2" P19" 65 Spcs @ 2'9 1/2" P19" 65 Spcs @ 2'0" P10 2 1/2" P19" 65 Spcs @ 2'0" P10 2 1/2" P19"

23411' End to End Cov. R.

1 Cov. R. 14x12 1/2" A3411' (A) P24-22

18" Holes for wood

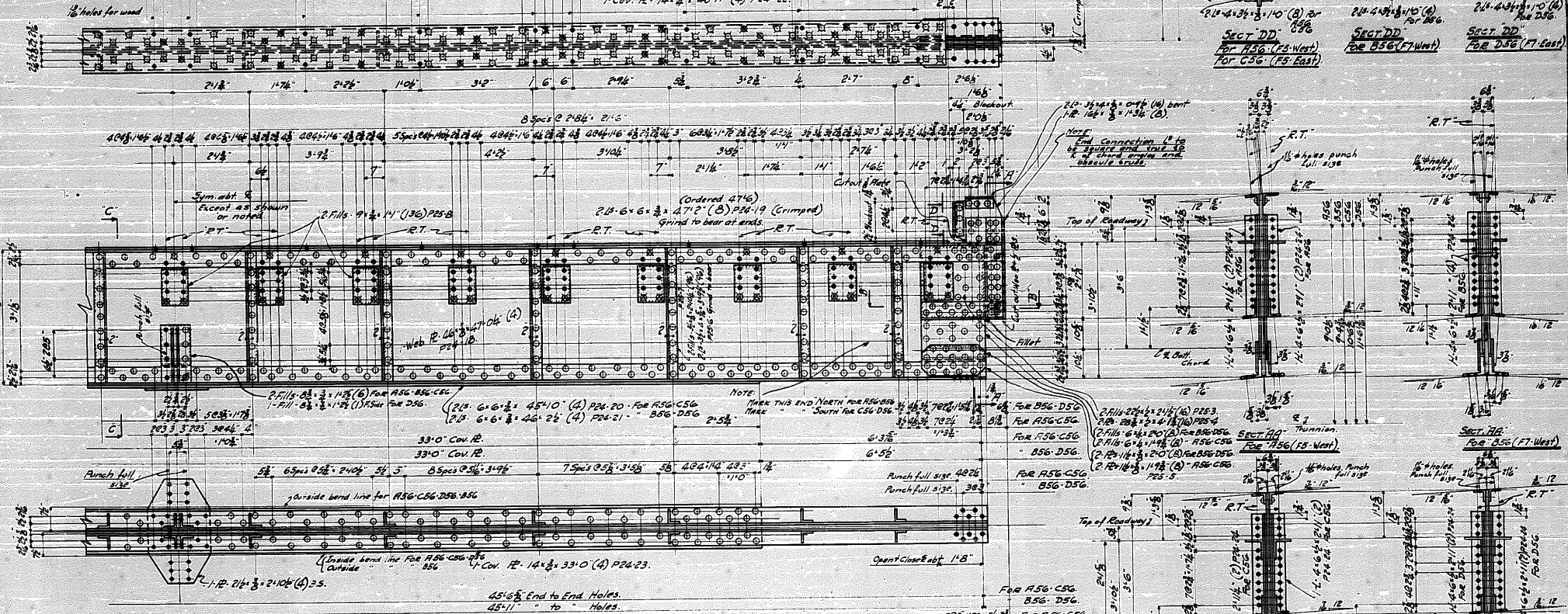
18" Crimp Main L



SECT DD FOR A56 (F5 West) FOR C56 (F5 East)

SECT DD FOR B56 (F7 West)

SECT DD FOR D56 (F7 East)



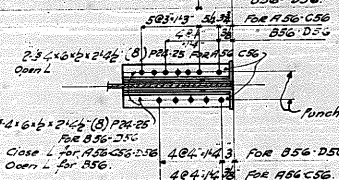
Note: Max this end NORTH for A56-D56. Max this end SOUTH for C56-D56.

For B56-D56 For A56-C56 For F56-C56 B56-D56 For A56-C56 B56-D56

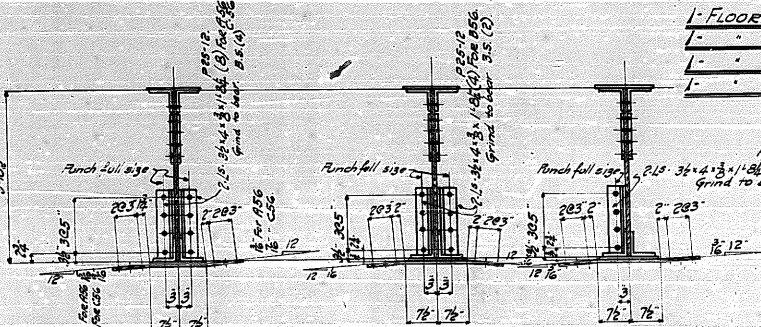
SECT DD FOR A56 (F5 West)

SECT DD FOR D56 (F7 East)

1- FLOOR BEAM - A56 (F5 West) 1- " " - B56 (F7 West) 1- " " - C56 (F5 East) 1- " " - D56 (F7 East)



SECT BB FOR all Floor beams



SECT CC FOR A56 (F5 West) FOR C56 (F5 East)

SECT CC FOR B56 (F7 West)

SECT CC FOR D56 (F7 East)

SECT AA FOR C56 (F5 East)

NOTE: For general notes see sheet #3. All reentrant cuts to be filled before cutting.

MILWAUKEE BRIDGE COMPANY  
MILWAUKEE, WISCONSIN

REVISIONS: Double Lane Trussion - Bascule Bridge Every Street, Joint IL.

FLOOR BEAMS (F5 West) (F5 East)

Specifications State of Ill., Division of Highways.

Shop Plans / Coat Sulphate Blue Lead (See Spec.)

Field Plans / Coats Carbonate white lead (See Spec.)

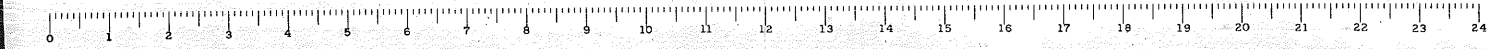
Scale: 3/8" = 1'-0"

Checked by: H. Dreier

Drawn by: R. F. Davis

5075 56

STATE OF ILLINOIS DEPARTMENT OF PUBLIC WORKS & BUILDINGS Division of Waterways Springfield, Ill.



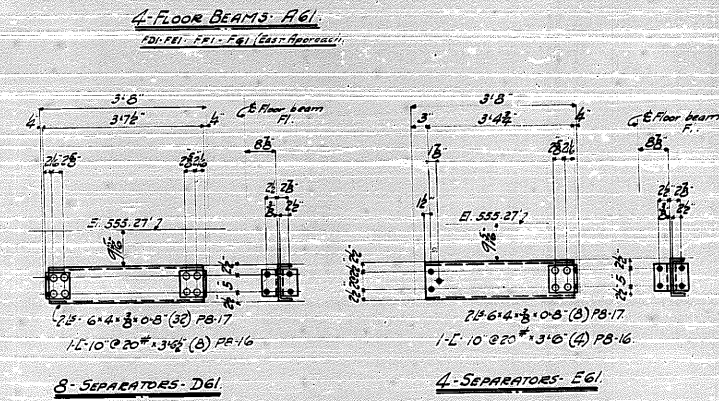
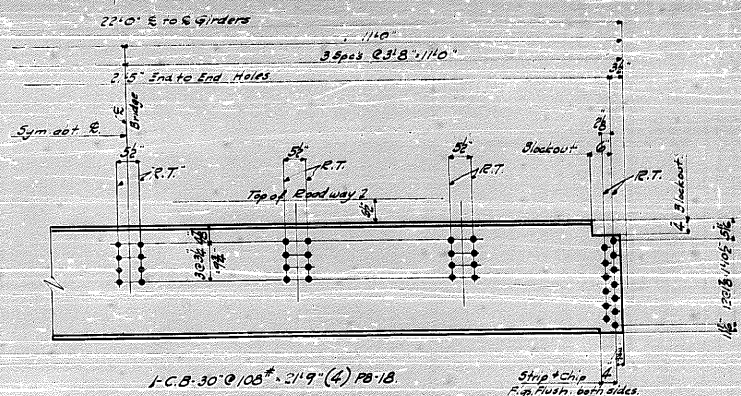
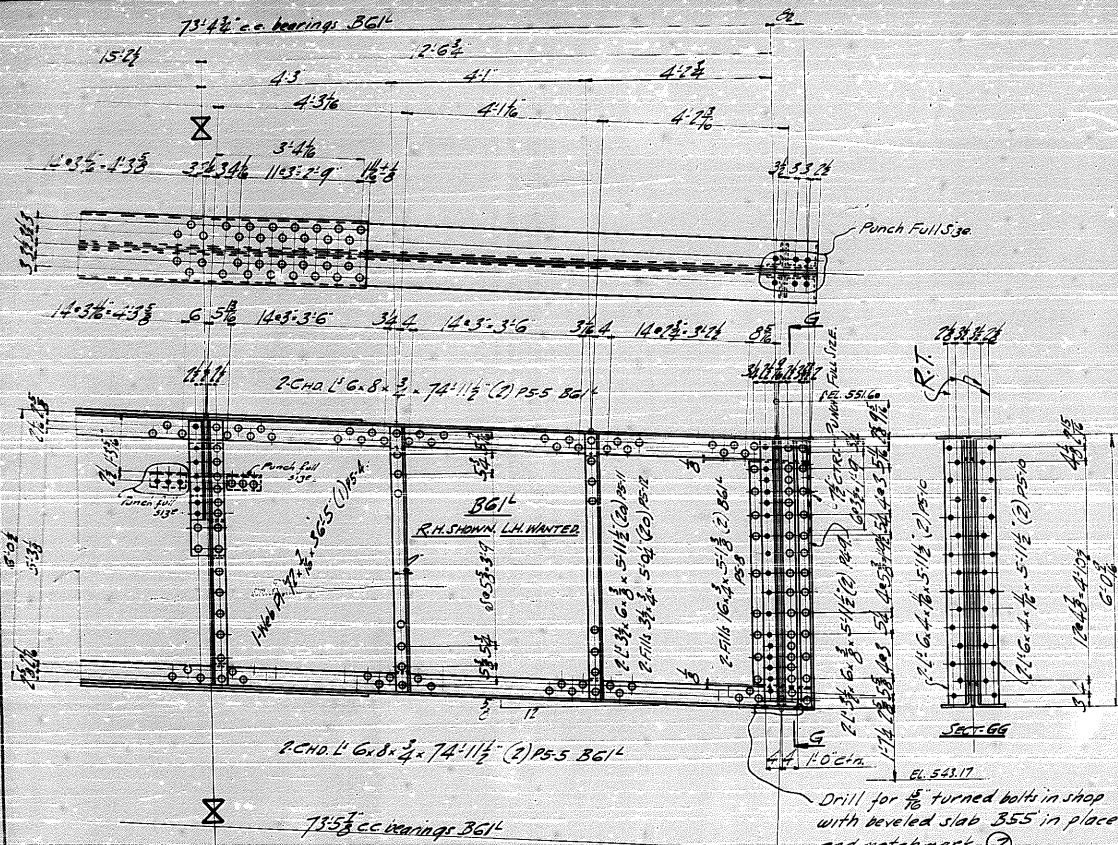








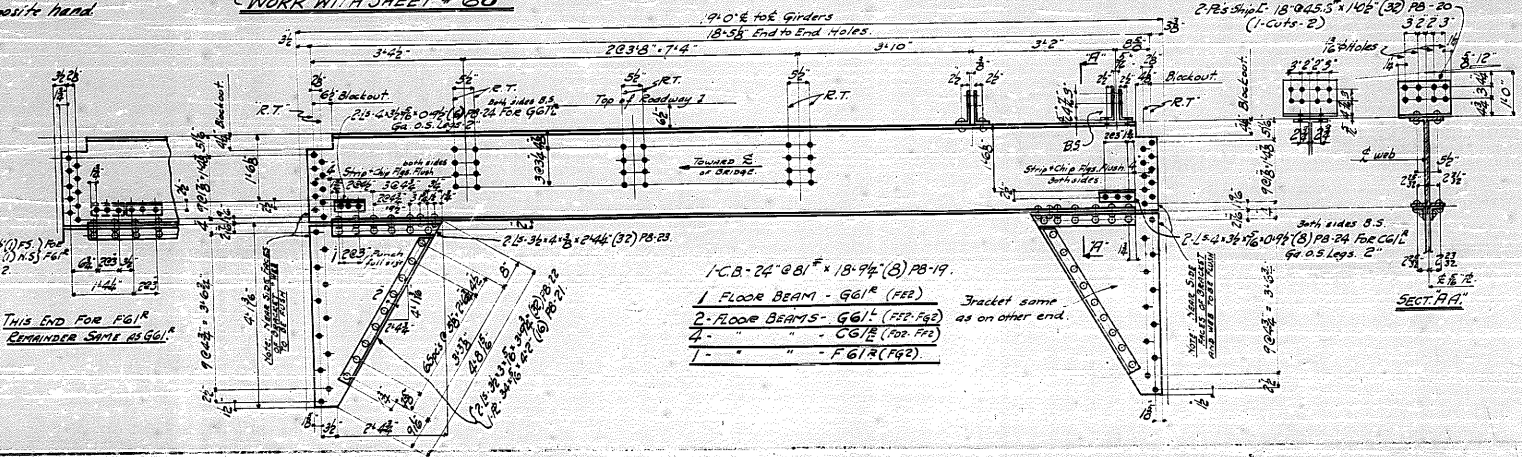




Girders B61 the same as A60<sup>E</sup> from line X except opposite hand

WORK WITH SHEET # 60

WORK WITH SHEET # 60  
FOR GENERAL NOTES SEE SHEET # 3

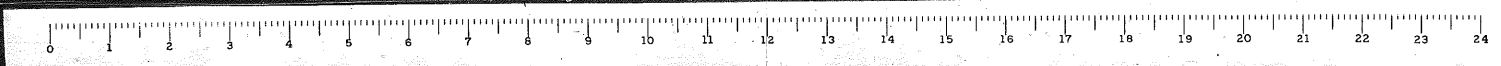


STATE OF ILLINOIS  
DEPARTMENT OF PUBLIC WORKS & BUILDINGS  
DIVISION OF WATERWAYS, ILLINOIS FIELD DIVISION  
MILWAUKEE BRIDGE COMPANY  
MILWAUKEE, WISCONSIN

DOUBLE LEAF TRUSSION BARBULE BRIDGE  
RUSSELL STREET, JOLIET, ILL.  
END JOINT OF GIRDER - G3  
STATE OF ILL. DIV. OF WATERWAYS  
1/2% SULPHATE BLUE LEAD (SEE SPEC.)  
1/2% CARBONATE WHITE LEAD (SEE SPEC.)

UNLESS NOTED  
A.C.R.  
5-8-24  
G.S.L.

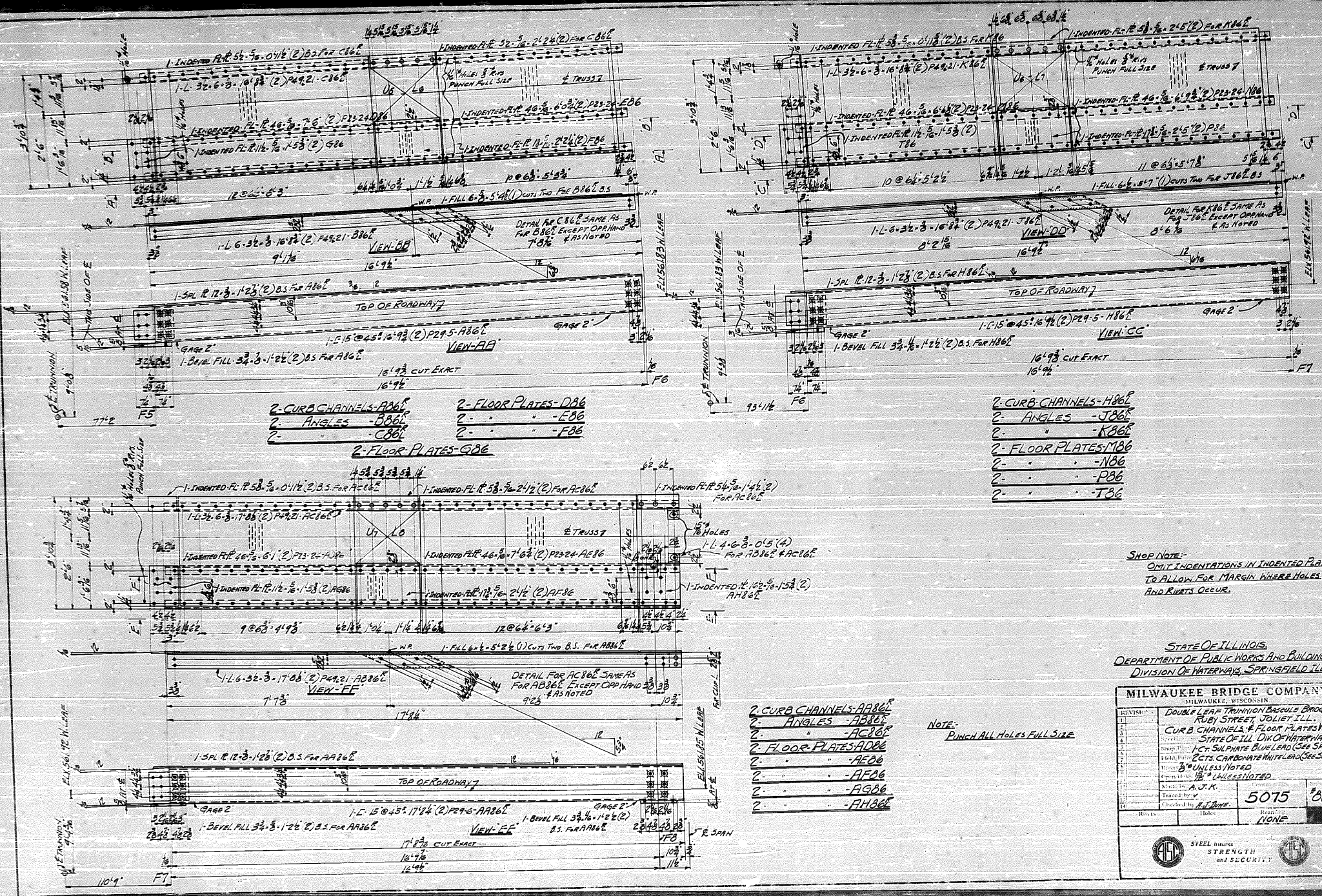
5075 61











- 2-CURB CHANNELS-AB6
- 2- ANGLES -B86
- 2- " -C86
- 2-FLOOR PLATES-GB6
- 2- " -DB6
- 2- " -F86

- 2-CURB CHANNELS-H86
- 2- ANGLES -J86
- 2- " -K86
- 2-FLOOR PLATES-M86
- 2- " -N86
- 2- " -P86
- 2- " -T86

- 2 CURB CHANNELS-AB6
- 2 ANGLES -AB6
- 2- " -AC6
- 2 FLOOR PLATES-AB6
- 2- " -AF6
- 2- " -AG6
- 2- " -AH6

NOTE:  
PUNCH ALL HOLES FULL SIZE

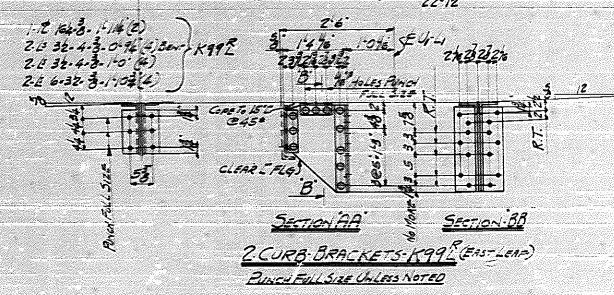
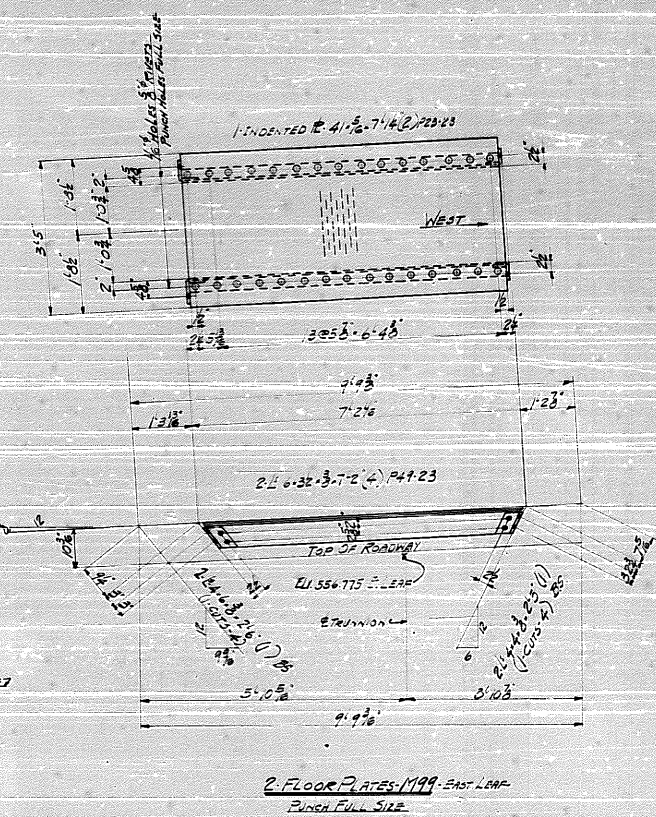
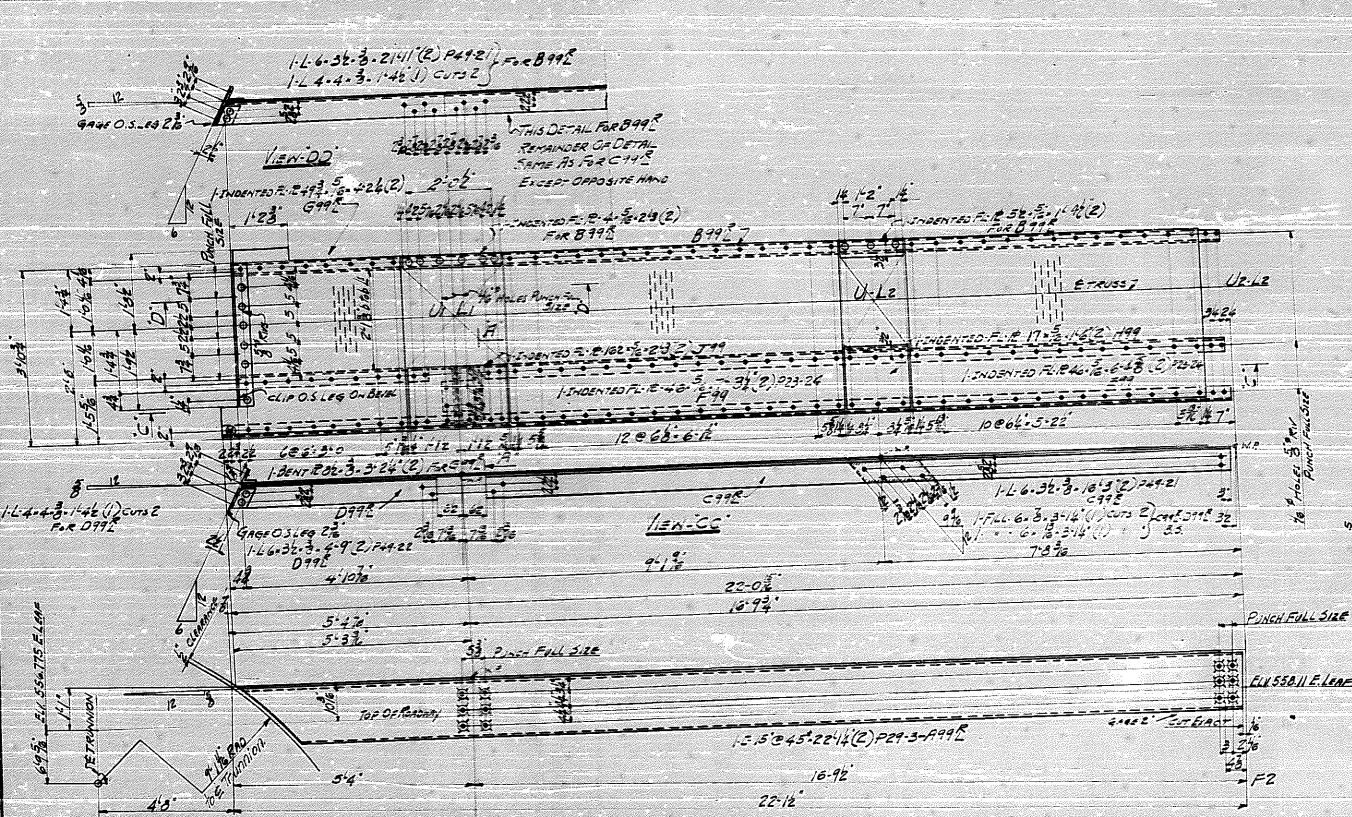
SHOP NOTE:  
OMIT INDENTATIONS IN INDENTED PLATE  
TO ALLOW FOR MARGIN WHERE HOLES  
AND RIVETS OCCUR.

STATE OF ILLINOIS  
DEPARTMENT OF PUBLIC WORKS AND BUILDINGS  
DIVISION OF WATERWAYS, SPRINGFIELD, ILL.

MILWAUKEE BRIDGE COMPANY		MILWAUKEE, WISCONSIN	
REVISION	DATE	DOUBLE LEAF TRUSSION BAScule BRIDGE RUBY STREET, JOLIET, ILL.	
1		CURB CHANNELS & FLOOR PLATES WITH STATE OF ILL. DIV. OF WATERWAYS	
2		1-CR. SULPHATE BLUE LEAD (SEE SPEC.)	
3		2-CTS. CARBONATE WHITE LEAD (SEE SPEC.)	
4		3" UNLESS NOTED	
5		OPEN UP TO 1/2" UNLESS NOTED	
6		Drawn by	A. J. K.
7		Checked by	H. J. Durr
8		Scale	5075
9		Year	'86
10		Notes	None







- 2 CURB CHANNELS - A99  
 2 ANGLES - B99  
 2 - C99  
 2 - D99  
 2 FLOOR PLATES - E99  
 2 - F99  
 2 - G99  
 2 - H99  
 2 - J99
- EAST LEAF

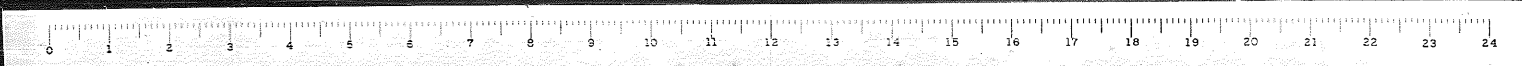
**SHOP NOTE**  
 OMIT INDENTATIONS IN INDENTED PLATE  
 TO ALLOW FOR MARGIN WHERE HOLES  
 AND RIVETS OCCUR.

STATE OF ILLINOIS  
 DEPARTMENT OF PUBLIC WORKS AND BUILDINGS  
 DIVISION OF HIGHWAYS SPRINGFIELD, ILL.

**MILWAUKEE BRIDGE COMPANY**  
 MILWAUKEE, WISCONSIN

REVISIONS:  
 1 DOUBLE LEAF TRUNNION BAScule BRIDGE  
 RUBY STREET, JOLIET, ILL.  
 2 CURB CHANNELS-FLOOR PLATES EAST LEAF  
 3 SPECIFICATIONS STATE OF ILL. DIVISION OF HIGHWAYS  
 4 SHOP DRAWING 1 CT SULPHATE BLUE LEAD (SEE SPEC)  
 5 FIELD NO. 2 CURB CARBONATE WHITE LEAD (SEE SPEC)  
 6 UNLESS NOTED  
 7 UNLESS NOTED  
 8 UNLESS NOTED  
 9 UNLESS NOTED  
 10 UNLESS NOTED  
 11 UNLESS NOTED  
 12 UNLESS NOTED  
 13 UNLESS NOTED  
 14 UNLESS NOTED  
 15 UNLESS NOTED  
 16 UNLESS NOTED  
 17 UNLESS NOTED  
 18 UNLESS NOTED  
 19 UNLESS NOTED  
 20 UNLESS NOTED  
 21 UNLESS NOTED  
 22 UNLESS NOTED  
 23 UNLESS NOTED  
 24 UNLESS NOTED

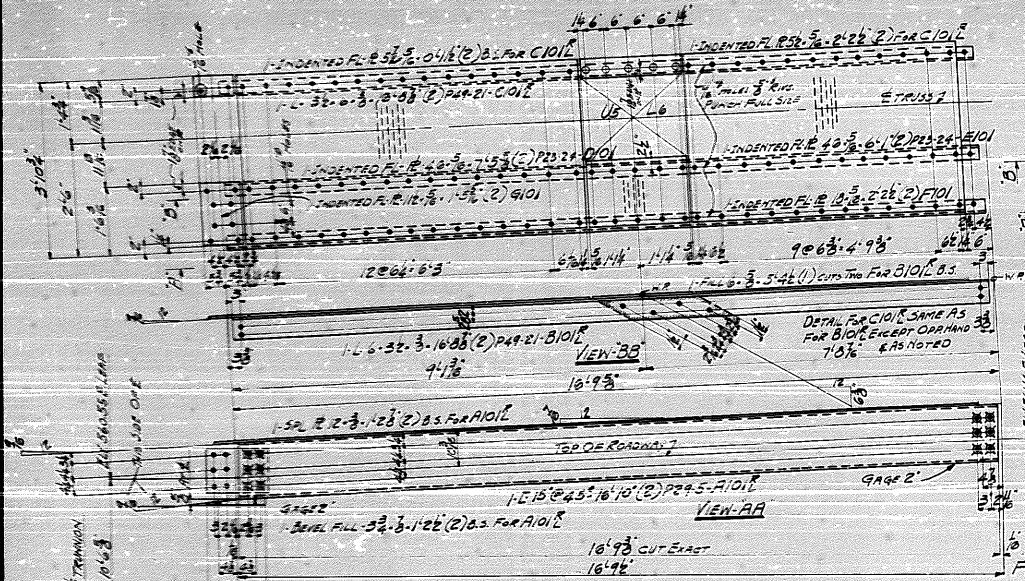
Checked by: **5075**  
 Date: **99**  
 As NOTED



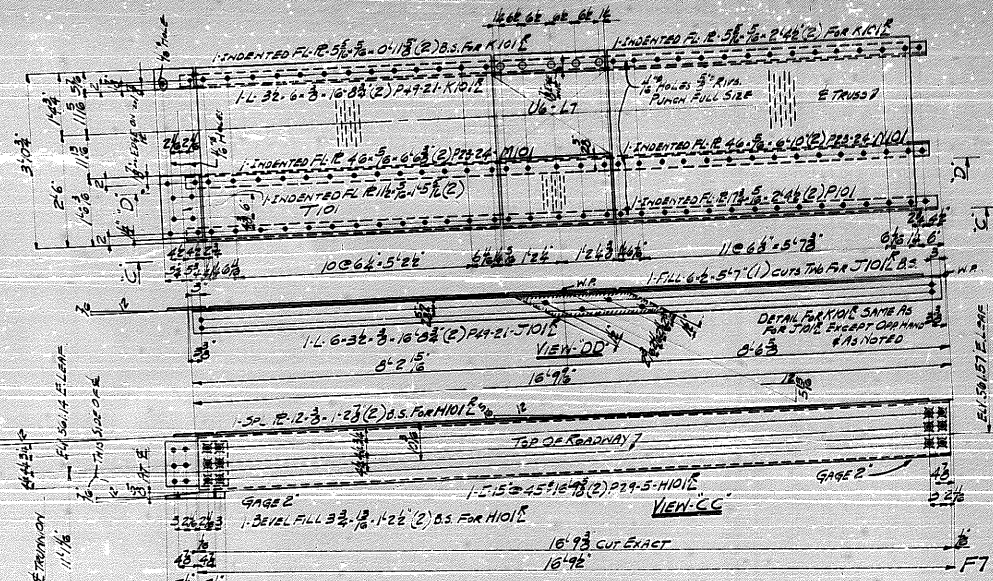




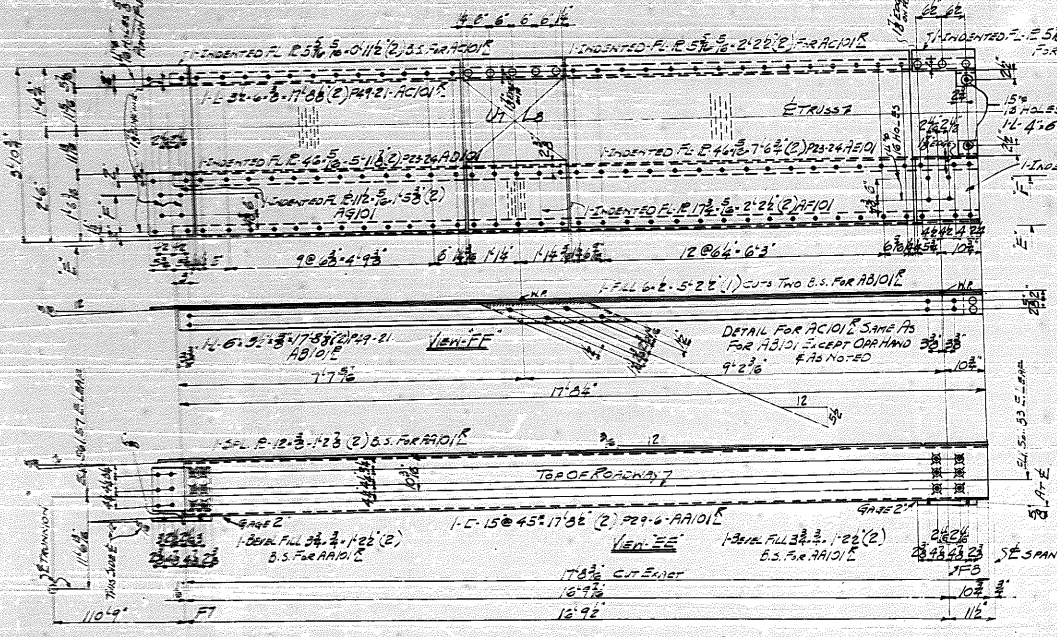




- 2 CURB CHANNELS - A1012
- 2 ANGLES - B1012
- 2 - C1012
- 2 FLOOR PLATES - D101
- 2 - E101
- 2 - F101
- 2 FLOOR PLATES - G101



- 2 CURB CHANNELS - A1012
- 2 ANGLES - B1012
- 2 - C1012
- 2 FLOOR PLATES - D101
- 2 - E101
- 2 - F101
- 2 FLOOR PLATES - G101



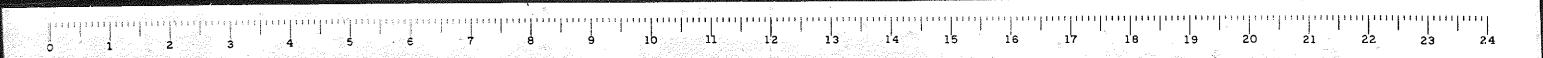
- 2 CURB CHANNELS - A1012
- 2 ANGLES - B1012
- 2 - C1012
- 2 FLOOR PLATES - D101
- 2 - E101
- 2 - F101
- 2 - G101
- 2 - H1012

NOTE - PUNCH ALL HOLES FULL SIZE

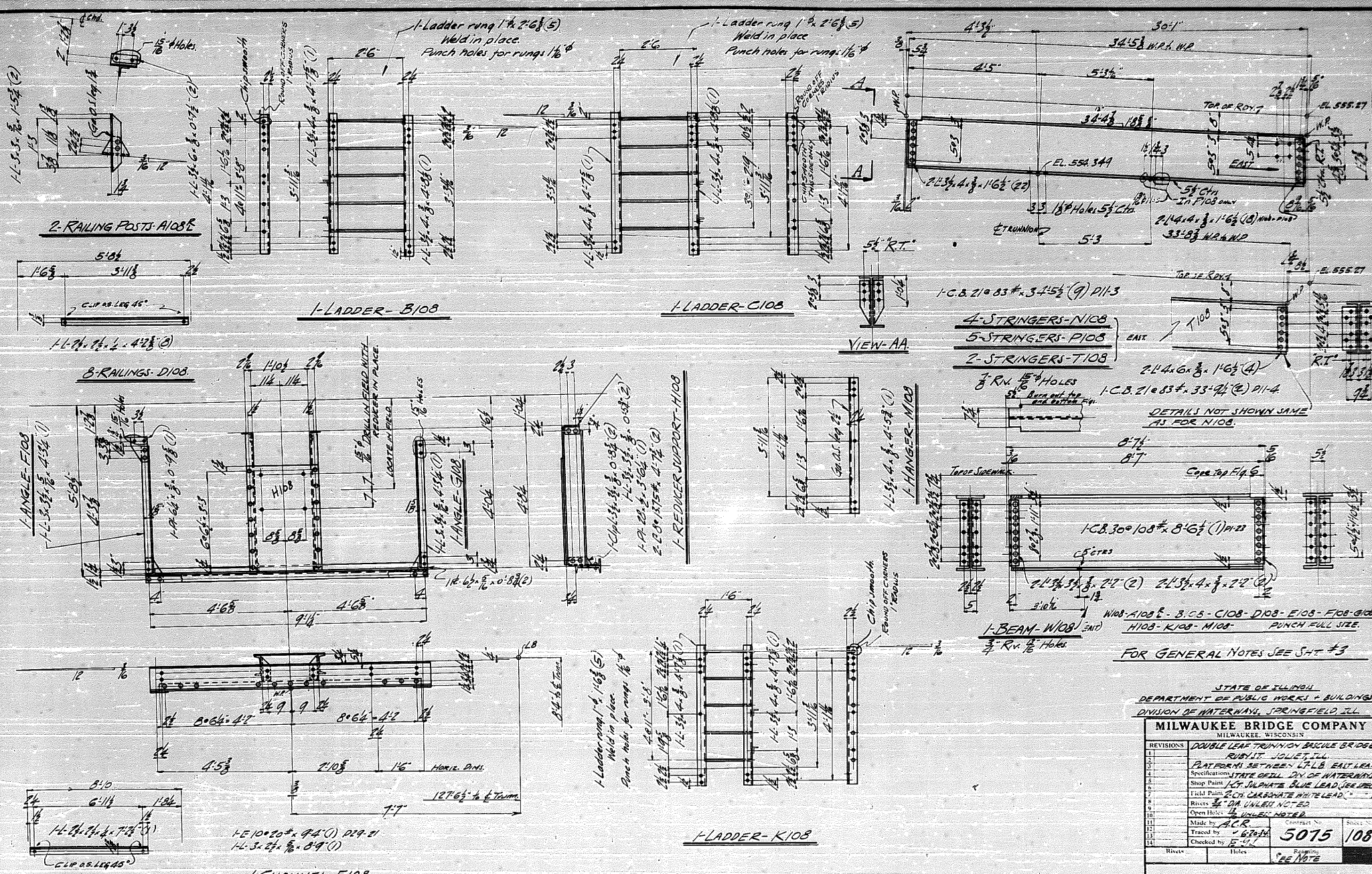
SHOPNOTE - OMIT INDENTATIONS IN INDENTED PLATE TO ALLOW FOR MARGIN WHERE HOLES AND RIVETS OCCUR.

STATE OF ILLINOIS  
DEPARTMENT OF PUBLIC WORKS AND BUILDINGS  
DIVISION OF WATERWAYS, SPRINGFIELD, ILL.

MILWAUKEE BRIDGE COMPANY			
MILWAUKEE, WISCONSIN			
REVISIONS	1	DOUBLE LEAF TRUNNION ORSCULE BRIDGE	
	2	RUBY STREET JOLIET ILL.	
	3	CURB CHANNELS & FLOOR PLATES - NOT LARG	
	4	Specifications - STATE OF ILL. DIVISION OF WATERWAYS	
	5	Shop Practice - SULPHATE BLUE LEAD (SEE SPEC)	
	6	Field Practice - CARBONATE WHITE LEAD (SEE SPEC)	
	7	Open Holes - 1/2"	
	8	Traced by -	
	9	Checked by -	
	10	Contract No.	5075
	11	Sheet No.	101
	12	Reaming	1/16"
Rivets	Holes		







STATE OF ILLINOIS  
DEPARTMENT OF PUBLIC WORKS & BUILDINGS  
DIVISION OF WATERWAYS, SPRINGFIELD, ILL.

MILWAUKEE BRIDGE COMPANY  
MILWAUKEE, WISCONSIN

REVISIONS	DESCRIPTION
1	DOUBLE LEAF TRUNNION BRIDGE
2	RIBBIT, JOLIET, ILL.
3	PLATFORMS BETWEEN L.T.L.B. EAST LEAF
4	Specifications STATE DEPT. DIV. OF WATERWAYS
5	Shop Paint 1/2" SULPHATE BLUE LEAD SEE DET.
6	Field Paint 2/3" CARBONATE WHITE LEAD
7	Open Holes UNLESS NOTED
8	Rivets 5/8" DIA. UNLESS NOTED
9	Steel 5/8" UNLESS NOTED
10	Traced by A.C.R.
11	Checked by E.H.L.
12	
13	
14	

5075 108

Rivets Holes

STEEL INSURE STRENGTH AND SECURITY

