

DIXON MUNICIPAL AIRPORT CHARLES R. WALGREEN FIELD DIXON, ILLINOIS

INDEX TO SHEETS

- 1 COVER SHEET
- 2 SITE PLAN/PROJECT CONTROL PLAN
- 3 SEQUENCE OF CONSTRUCTION - PHASE 1
PER AC 150/5370-2F (LATEST EDITION)
- 4 SEQUENCE OF CONSTRUCTION - PHASE 2
PER AC 150/5370-2F (LATEST EDITION)
- 5 SEQUENCE OF CONSTRUCTION - PHASE 3
PER AC 150/5370-2F (LATEST EDITION)
- 6 SEQUENCE OF CONSTRUCTION - GENERAL NOTES
- 7 SEQUENCE OF CONSTRUCTION - GENERAL DETAILS
- 8 EXISTING CONDITIONS AND PROPOSED REMOVALS - SHEET 1
- 9 EXISTING CONDITIONS AND PROPOSED REMOVALS - SHEET 2
- 10 EXISTING CONDITIONS AND PROPOSED REMOVALS - SHEET 3
- 11 AIRFIELD LIGHTING PLAN - SHEET 1
- 12 AIRFIELD LIGHTING PLAN - SHEET 2
- 13 AIRFIELD LIGHTING PLAN - SHEET 3
- 14 ELECTRICAL DETAILS - SHEET 1
- 15 ELECTRICAL DETAILS - SHEET 2
- 16 EROSION CONTROL PLAN

CONSTRUCTION PLANS FOR DIXON MUNICIPAL AIRPORT REHABILITATE LIGHTS ON BOTH RUNWAYS

ILLINOIS PROJECT: C73-4284
 SBG PROJECT: 3-17-SBGP-87/95

JULY 28, 2017

SUMMARY OF QUANTITIES

BASE BID: RUNWAY 8/26				
ITEM NO.	DESCRIPTION	UNIT	ESTIMATED QUANTITY	RECORD QUANTITY
BASE BID: RUNWAY 8/26 LIGHTING REHABILITATION				
AR108158	1/C #8 5 KV UG CABLE IN UD	L.F.	10,600	
AR110014	4" DIRECTIONAL BORE	L.F.	446	
AR110610	ELECTRICAL HANDHOLE	EACH	2	
AR125100	ELEVATED RETROREFLECTIVE MARKER	EACH	20	
AR125410	MITL - STAKE MOUNTED	EACH	20	
AR125505	MIRL STAKE MOUNTED	EACH	33	
AR125510	MIRL BASE MOUNTED	EACH	10	
AR125540	MI THRESHOLD LIGHT STAKE MTD	EACH	12	
AR125610	REILS	PAIR	1	
AR125901	REMOVE STAKE MOUNTED LIGHT	EACH	62	
AR125902	REMOVE BASE MOUNTED LIGHT	EACH	9	
AR150510	ENGINEER'S FIELD OFFICE	L.S.	1	
AR150520	MOBILIZATION	L.S.	1	
ADDITIVE ALTERNATE NO. 1: RUNWAY 12/30				
ITEM NO.	DESCRIPTION	UNIT	ESTIMATED QUANTITY	RECORD QUANTITY
ADDITIVE ALTERNATE NO. 1: RUNWAY 12/30 HOMERUN CABLE, DIRECTIONAL BORE & RETROREFLECTORS				
AS108158	1/C #8 5 KV UG CABLE IN UD	L.F.	2,600	
AS110014	4" DIRECTIONAL BORE	L.F.	40	
AS125100	ELEVATED RETROREFLECTIVE MARKER	EACH	6	



D. Kyle Peabody
 7-28-17
 EXPIRES 11-30-17

© Copyright CMT, Inc. 15244-02-00

CMT
 CRAWFORD, MURPHY & TILLY, INC.
 CONSULTING ENGINEERS
 License No. 184-000613

SUBMITTED BY *D. Kyle Peabody*
 D. KYLE PEABODY, P.E.

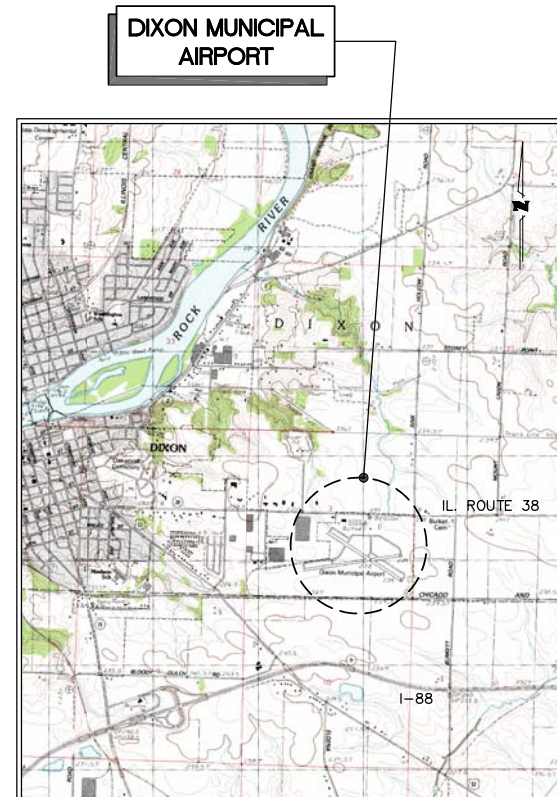
DATE July 28, 2017



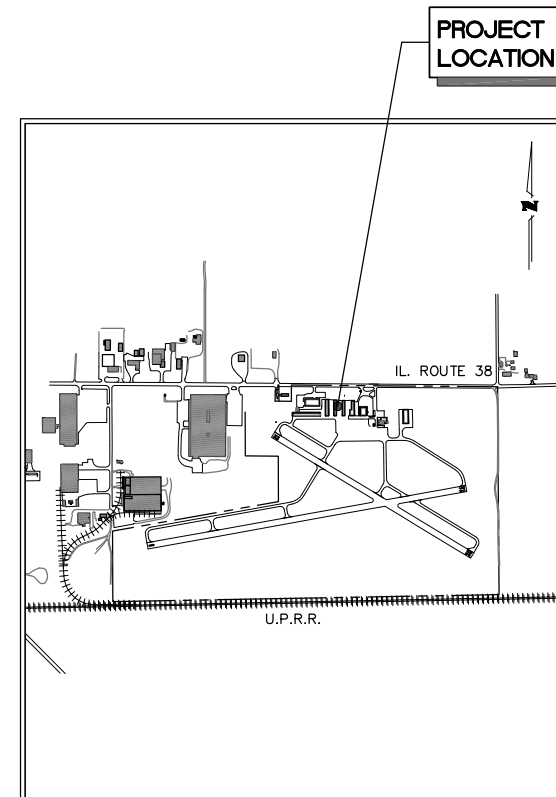
J.U.L.I.E.
 JOINT UTILITY LOCATING
 INFORMATION FOR EXCAVATORS
 www.illinois1call.com

THE LOCATION, SIZE AND TYPE OF MATERIAL OF EXISTING UNDERGROUND UTILITIES INDICATED ON THE PLANS IS NOT REPRESENTED AS BEING ACCURATE, SUFFICIENT OR COMPLETE IT SHALL BE THE CONTRACTOR'S RESPONSIBILITY TO DETERMINE ACTUAL LOCATIONS OF ALL SUCH FACILITIES, INCLUDING SERVICE CONNECTIONS TO UNDERGROUND UTILITIES. PRIOR TO CONSTRUCTION, THE CONTRACTOR SHALL NOTIFY UTILITY COMPANIES OF HIS OPERATIONAL PLANS, OBTAIN FROM RESPECTIVE UTILITY COMPANIES DETAILED INFORMATION AND ASSISTANCE RELATIVE TO THE LOCATION OF THEIR FACILITIES AND THE WORKING SCHEDULE OF THE COMPANIES FOR REMOVAL OR ADJUSTMENT WHERE REQUIRED. IN THE EVENT AN UNEXPECTED UTILITY INTERFERENCE IS ENCOUNTERED DURING CONSTRUCTION, THE CONTRACTOR SHALL IMMEDIATELY NOTIFY THE UTILITY COMPANY OF JURISDICTION AND THE ONE-CALL NOTICE SYSTEM. THE ENGINEER SHALL ALSO BE IMMEDIATELY NOTIFIED. ANY SUCH UTILITY OR SERVICES SHALL BE RESTORED TO SERVICE AT ONCE AND PAID FOR BY THE CONTRACTOR AT NO ADDITIONAL COST TO THE CONTRACT.

CALL J.U.L.I.E. FOR UTILITY INFORMATION AT 811.



LOCATION MAP



SITE PLAN

DESIGN INFORMATION

APPROACH CATEGORY B
 DESIGN GROUP I

DIXON MUNICIPAL AIRPORT

TOWNSHIP: 21 NORTH
 RANGE: 9 EAST
 LEE COUNTY

DIXON TOWNSHIP
 (SECTION: 3)
 OPPOSITE LINCOLN HIGHWAY 38
 (FRANKLIN GROVE ROAD)

UNICOM RADIO FREQUENCY - 123.05

DATE: Monday, July 31, 2017 3:38:59 PM
 FILE: K:\Dixond\19244-02_maintenance\Draw\Sheets\final_7-27-2017\02_Site Plan and Project Control Plan.dwg
 UPDATE BY: Jim Ohse
 LAYOUT: Layout1
 REF DWG: Dixon-base.dwg
 IMAGE FILES:

LEGEND

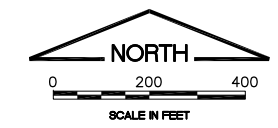
- EXISTING BUILDING
- EXISTING PAVEMENT
- NEW RUNWAY 8/26 CIRCUIT 1/C #8 5KV IN 3/4" UNIT DUCT
- NEW RUNWAY 12/30 HOMERUN CIRCUIT 1/C #8 5KV IN 3/4" UNIT DUCT
- AIRPORT PROPERTY LINE
- NEW 4" CONDUIT (BORED & JACKED)
- EXISTING CONDUIT
- NEW STAKE MOUNTED MEDIUM INTENSITY RUNWAY LIGHT
- NEW BASE MOUNTED MEDIUM INTENSITY RUNWAY LIGHT
- NEW STAKE MOUNTED MEDIUM INTENSITY THRESHOLD LIGHT
- NEW HANDHOLE
- NEW RUNWAY END IDENTIFIER LIGHT (REIL)

BASE BID

WORK INCLUDES INSTALLATION OF NEW CABLING FOR RUNWAY 8/26 INCLUDING THE HOMERUN CABLE ALONG WITH NEW LIGHTING AND DIRECTIONAL BORES FOR THE ENTIRE RUNWAY. EXISTING REIL'S WILL ALSO BE REPLACED.

ADDITIVE ALTERNATE NO. 1

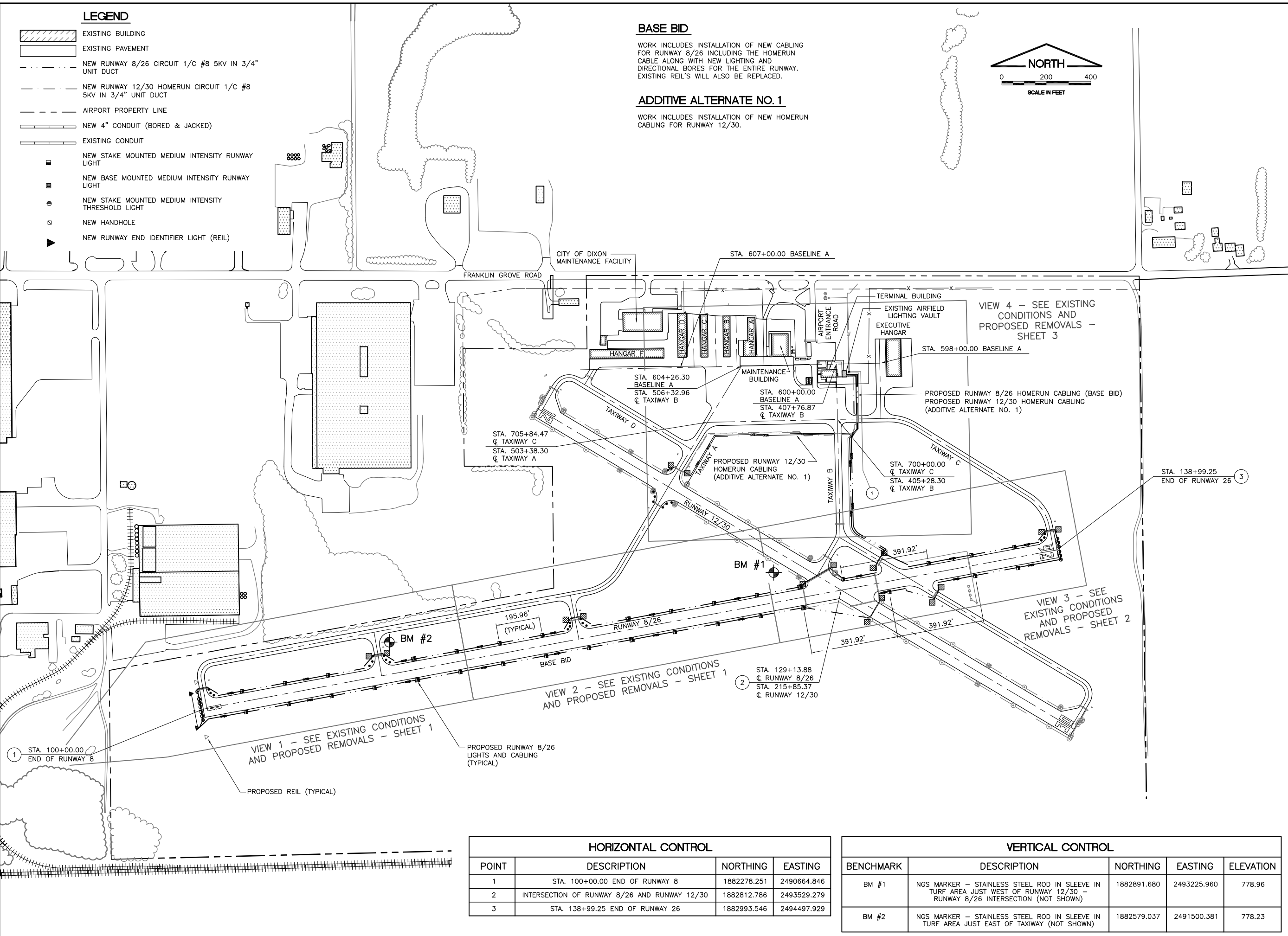
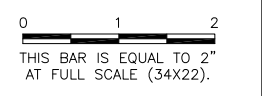
WORK INCLUDES INSTALLATION OF NEW HOMERUN CABLING FOR RUNWAY 12/30.



IL. CONTRACT: **DI028**
 IL. LETTING ITEM: **01A**
 IL. PROJECT: **C73-4284**
 S.B.G. PROJECT: **3-17-SBGP-87 & 95**

SURVEY BOOK # BOOK #

REVISIONS		
NUMBER	BY	DATE



**DIXON MUNICIPAL AIRPORT
 DIXON, ILLINOIS
 REHABILITATE LIGHTS ON BOTH RUNWAYS
 SITE PLAN AND PROJECT CONTROL PLAN**

© Copyright CMT, Inc.

CMT
 CRAWFORD, MURPHY & TILLY, INC.
 CONSULTING ENGINEERS
 License No. 184-000613

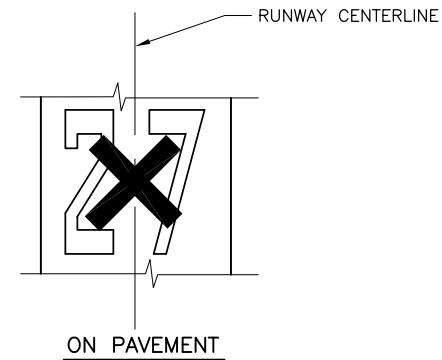
DESIGN BY: RMD
 DRAWN BY: JRO
 CHECKED BY: DKP
 APPROVED BY: DLP
 DATE: 7/28/17
 JOB No: 15244-02

FINAL

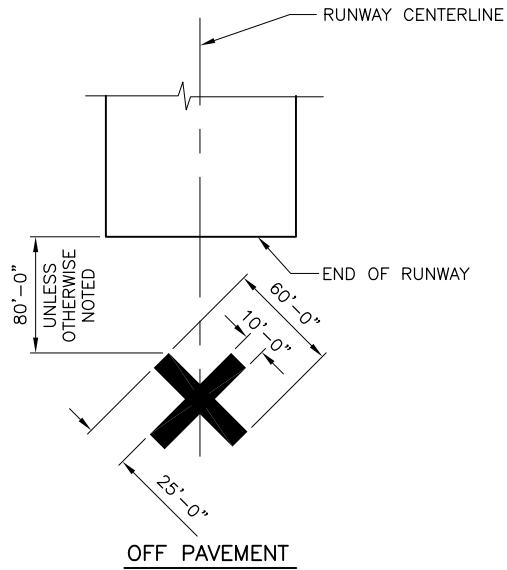
HORIZONTAL CONTROL			
POINT	DESCRIPTION	NORTHING	EASTING
1	STA. 100+00.00 END OF RUNWAY 8	1882278.251	2490664.846
2	INTERSECTION OF RUNWAY 8/26 AND RUNWAY 12/30	1882812.786	2493529.279
3	STA. 138+99.25 END OF RUNWAY 26	1882993.546	2494497.929

VERTICAL CONTROL				
BENCHMARK	DESCRIPTION	NORTHING	EASTING	ELEVATION
BM #1	NGS MARKER - STAINLESS STEEL ROD IN SLEEVE IN TURF AREA JUST WEST OF RUNWAY 12/30 - RUNWAY 8/26 INTERSECTION (NOT SHOWN)	1882891.680	2493225.960	778.96
BM #2	NGS MARKER - STAINLESS STEEL ROD IN SLEEVE IN TURF AREA JUST EAST OF TAXIWAY (NOT SHOWN)	1882579.037	2491500.381	778.23

DATE: Monday, July 31, 2017 3:41:00 PM
 FILE: K:\Dixon\15244-02_rehabilitating\Draw\Sheets\Final_7-27-2017\07_Sequence of Construction General Details.dwg
 UPDATE BY: jrm Ohse
 LAYOUT: Layout1
 Ed:\cgm\cmt\cmt_3c_cmyk.jpg
 Ed:\cgm\cmt_3c_cmyk.jpg
 KREF.DWG: fencing - final.dwg



ON PAVEMENT

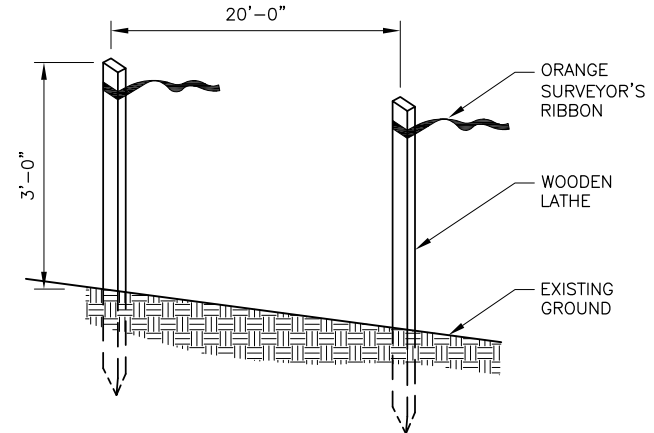


CLOSED RUNWAY MARKER DETAIL

N.T.S.

NOTES

- MARKERS SHALL BE SOLID YELLOW.
- MARKERS SHALL BE MATERIAL APPROVED BY THE ENGINEER.
- CONTRACTOR SHALL MAINTAIN AND RELOCATE MARKERS AS SHOWN ON THE PLANS OR AS NEEDED TO FACILITATE CONSTRUCTION.
- MARKERS ON PAVEMENT SHALL BE PLACED OVER EXISTING RUNWAY NUMERALS AS SHOWN. HOWEVER, WHEN WORK IS NECESSARY FOR THAT AREA OR PAVEMENT IS OPEN TO TAXIING AIRCRAFT, THE MARKERS SHALL BE RELOCATED OFF THE PAVEMENT AS SHOWN ON THE DETAIL.
- COST OF FURNISHING, INSTALLING, MAINTAINING, RELOCATING AND REMOVING MARKERS SHALL BE CONSIDERED INCIDENTAL TO THE CONTRACT.
- DURING VARIOUS PHASES OF WORK, IT WILL BE NECESSARY TO CLOSE RUNWAYS TO AIR TRAFFIC ON A TEMPORARY BASIS AS COORDINATED WITH THE AIRPORT AND TOWER, WHERE APPLICABLE, PERSONNEL. THE CONTRACTOR SHALL MARK THE RUNWAYS TO BE CLOSED BY PLACING A YELLOW CROSS AT THE LOCATION AND DIMENSIONS DETAILED ON THIS SHEET. THE CROSSES ARE SHOWN ON THE RESPECTIVE RUNWAYS ACCORDING TO THE VARIOUS PHASES OF WORK AS DELINEATED IN THE CONSTRUCTION ACTIVITY PLANS.

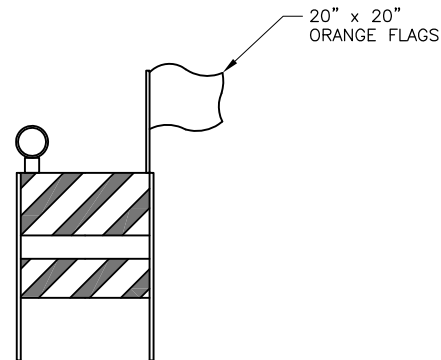


CONSTRUCTION SETBACK LINE DETAIL

N.T.S.

NOTES

- PLACE CONSTRUCTION SETBACK LINES AT LOCATIONS OF CONSTRUCTION OPERATIONS NEAR RUNWAY OBSTACLE FREE ZONES AND TAXIWAY OBJECT FREE AREAS WHEN RUNWAYS/TAXIWAYS ARE OPEN.



FLASHER BARRICADE DETAIL

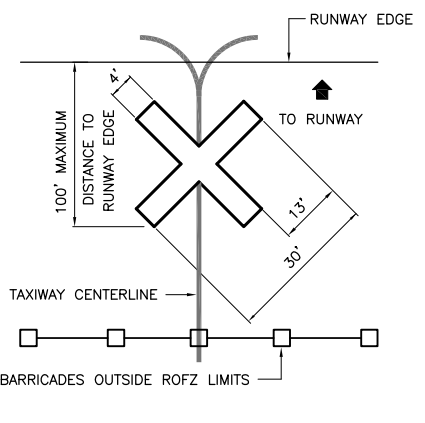
N.T.S.

NOTES

- FLASHERS TO BE BATTERY OPERATED. LENS TO BE RED AND BE ABLE TO ROTATE 90 DEGREES. ALTERNATE FLASHER LENSES SO THAT EVERY OTHER LENS IS ROTATED 90°.
- SANDBAGS TO BE PLACED ON EACH SUPPORT BRACE AS REQUIRED TO PREVENT DISPLACEMENT BY WIND, JET OR PROP BLAST.
- NO SEPARATE PAYMENT WILL BE MADE FOR THIS ITEM. COSTS SHALL BE CONSIDERED INCIDENTAL TO THE PROJECT.
- PLACE AT TEN (10') INTERVALS.
- ONE 20"x20" ORANGE FLAG TO BE INSTALLED ON EACH BARRICADE.
- CONTRACTOR SHALL BE RESPONSIBLE FOR MAINTAINING BARRICADES AT ALL TIMES TO THE SATISFACTION OF THE AIRPORT MANAGER.

CONTRACTOR ACCESS ROUTE NOTES

- ALL PAVEMENTS OR TURF AREAS UTILIZED BY THE CONTRACTOR FOR AN ACCESS ROUTE, STAGING, OR STORAGE SHALL BE REPAIRED AND RESTORED TO THEIR ORIGINAL CONDITION TO THE SATISFACTION OF THE AIRPORT. NO ADDITIONAL COMPENSATION TO PROTECT, REPAIR, OR RESTORE THESE AREAS SHALL BE MADE.

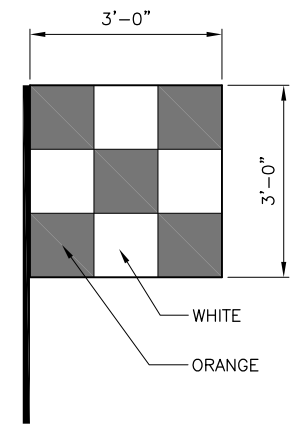


CLOSED TAXIWAY MARKER DETAIL

N.T.S.

CLOSED TAXIWAY MARKER DETAIL NOTES

- CLOSED TAXIWAY MARKERS SHALL BE PAINTED WITH TEMPORARY MARKING CAPABLE OF BEING REMOVED WITH LOW PRESSURE WATER BLASTING OR OTHER MATERIAL THAT DOES NOT VIOLATE THE OBJECT FREE AREA CRITERIA AND RUNWAY SAFETY AREA CRITERIA PER ADVISORY CIRCULAR 150/5300-13A (LATEST EDITION) AND ARE APPROVED BY THE AIRPORT.
- CONTRACTOR SHALL MAINTAIN AND RELOCATE MARKERS AS SHOWN ON THE PLANS OR AS NEEDED TO FACILITATE CONSTRUCTION.
- COST OF FURNISHING, INSTALLING, MAINTAINING AND REMOVING MARKERS SHALL BE CONSIDERED INCIDENTAL TO THE CONTRACT.
- PLACE MARKERS OVER TAXIWAY CENTERLINE.
- MARKERS SHALL BE ADEQUATELY SECURED TO PREVENT MOVEMENT BY PROPELLER WASH, JET BLAST OR OTHER WIND CURRENTS.
- MARKERS ARE ONLY REQUIRED FOR TAXIWAYS CLOSED THREE (3) CONSECUTIVE DAYS OR MORE.



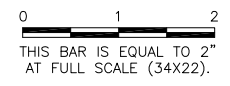
CONSTRUCTION EQUIPMENT AND TRUCK/VEHICLE SIGNAL FLAG

N.T.S.

IL CONTRACT: **D1028**
 IL LETTING ITEM: **01A**
 IL PROJECT: **C73-4284**
 S.B.G. PROJECT: **3-17-SBGP-87 & 95**

SURVEY BOOK # BOOK #

REVISIONS		
NUMBER	BY	DATE



DIXON MUNICIPAL AIRPORT
DIXON, ILLINOIS
REHABILITATE LIGHTS ON BOTH RUNWAYS
SEQUENCE OF CONSTRUCTION
GENERAL DETAILS

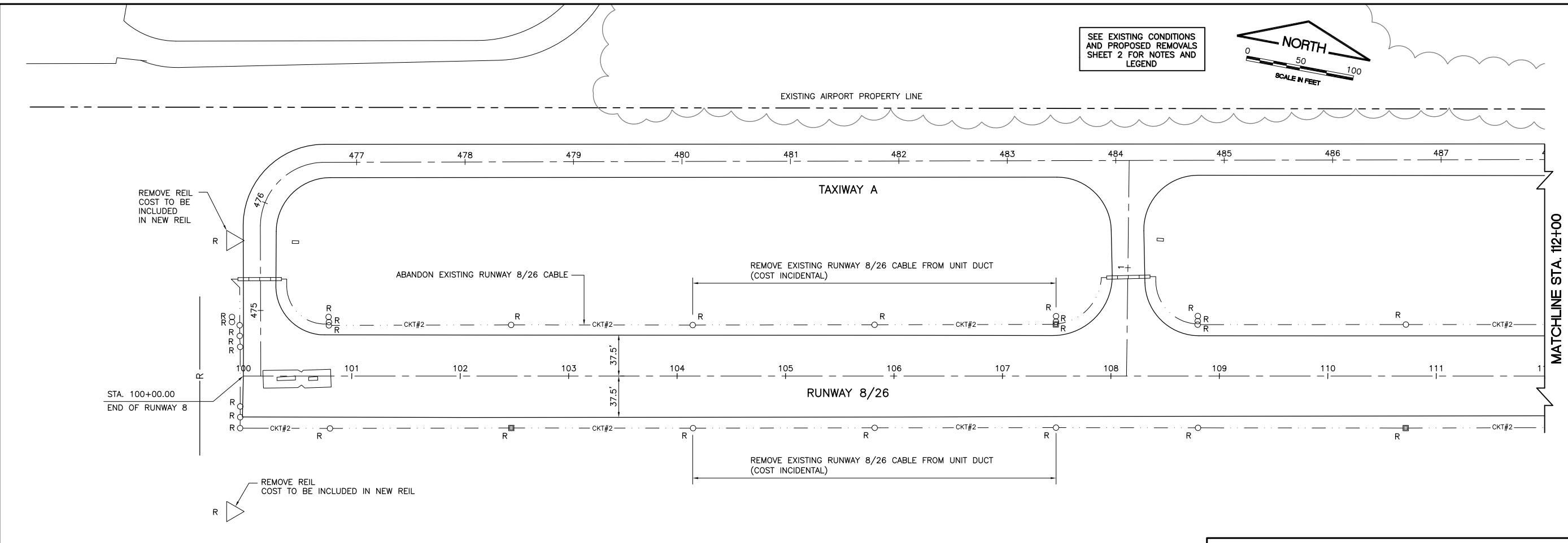
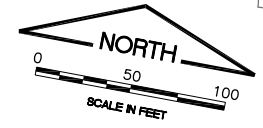


DESIGN BY:	RMD
DRAWN BY:	JRO
CHECKED BY:	DKP
APPROVED BY:	DLP
DATE:	7/28/17
JOB No:	15244-02

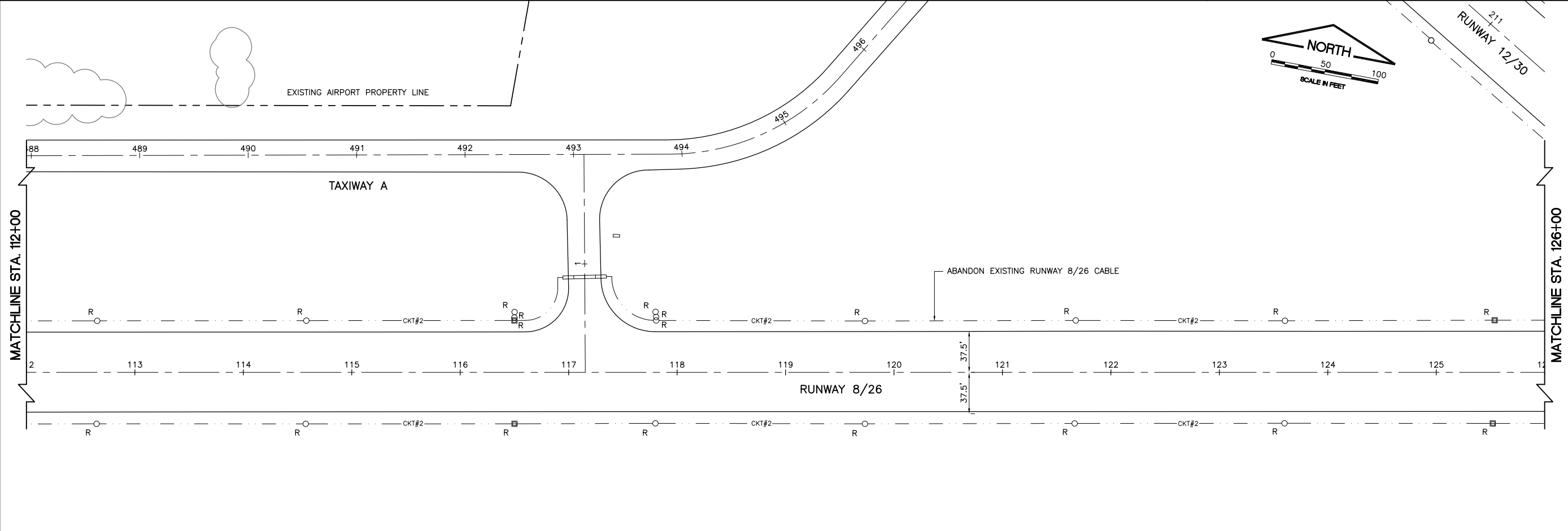
FINAL

DATE: Monday, July 31, 2017 3:41:37 PM
 FILE: K:\Dixon\15244-02_rehabilitating\Draw\Sheets\Incl_7-27-2017\08_lighting-es_1.dwg
 UPDATE BY: jlm Ohse
 LAYOUT: Layout1
 KREF DWG: beam_lighting.dwg
 6wasesp-usn-dwg.dwg
 :STILL FILES:

SEE EXISTING CONDITIONS AND PROPOSED REMOVALS SHEET 2 FOR NOTES AND LEGEND



VIEW 1 - BASE BID WORK THIS VIEW

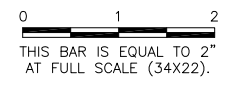


VIEW 2 - BASE BID WORK THIS VIEW

I.L. CONTRACT: **D1028**
 I.L. LETTING ITEM: **01A**
 I.L. PROJECT: **C73-4284**
 S.B.G. PROJECT: **3-17-SBGP-87 & 95**

SURVEY BOOK # BOOK #

REVISIONS		
NUMBER	BY	DATE



DIXON MUNICIPAL AIRPORT
DIXON, ILLINOIS
REHABILITATE LIGHTS ON BOTH RUNWAYS
EXISTING CONDITIONS AND PROPOSED REMOVALS
SHEET 1

© Copyright CMT, Inc.

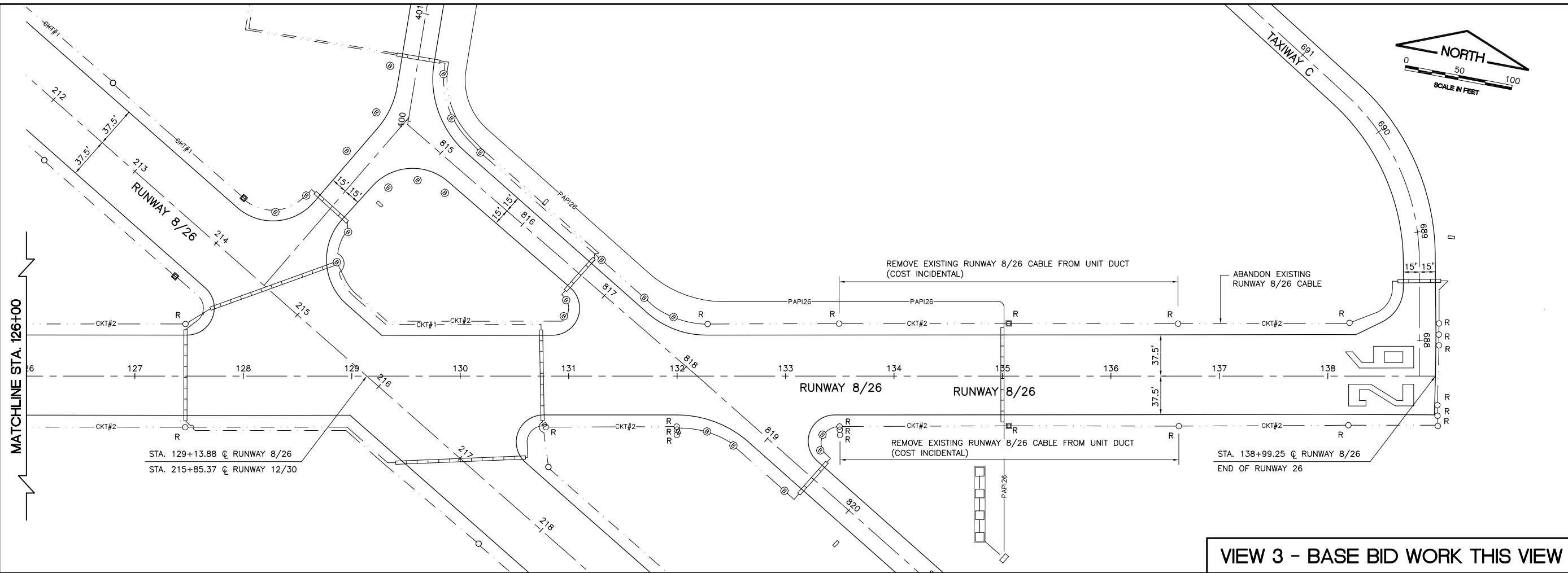
CMT
 CRAWFORD, MURPHY & TILLY, INC.
 CONSULTING ENGINEERS
 License No. 184-000613

DESIGN BY:	RMD
DRAWN BY:	JRO
CHECKED BY:	DKP
APPROVED BY:	DLP
DATE:	7/28/17
JOB No:	15244-02

FINAL

SHEET 8 OF 16 SHEETS

DATE: Monday, July 31, 2017 3:42:17 PM
 FILE: K:\Dixon\15244-02_rehabilitating\Draw\Sheets\final_7-27-2017\09_lighting-es_2.dwg
 UPDATE BY: jrm Ohse
 LAYOUT: Layout1
 KREF DWG: beam_lighting.dwg
 DIMEN: beam.dwg
 IMAGE FILES:



VIEW 3 - BASE BID WORK THIS VIEW

NOTES

1. CONTRACTOR SHALL VERIFY THAT ALL EXISTING RUNWAYS AND TAXIWAYS TO REMAIN OPEN HAVE THEIR LIGHTING OPERATIONAL AT THE END OF EACH WORKING DAY.
2. ANY TEMPORARY CABLING REQUIRED FOR THIS PROJECT SHALL BE CONSIDERED INCIDENTAL TO THE CONTRACT.
3. EXISTING CABLES BEING REPLACED WITH NEW CABLES IN EXISTING CONDUITS/UNIT DUCTS SHALL BE REMOVED AND DISPOSED OF OFF AIRPORT PROPERTY (COST INCIDENTAL).

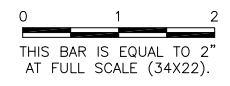
LEGEND

- EXISTING BUILDING
- EXISTING PAVEMENT
- AIRPORT PROPERTY LINE
- EXISTING CONDUIT/DUCT BANK
- EXISTING RUNWAY 26 PAPI CIRCUIT
- EXISTING RUNWAY 12/30 CIRCUIT 1/C #8 5KV
- REMOVE/ABANDON EXISTING RUNWAY 8/26 CIRCUIT 1/C #8 5KV
- EXISTING RETROREFLECTIVE MARKER
- EXISTING BASE MOUNTED MEDIUM INTENSITY RUNWAY LIGHT
- EXISTING STAKE MOUNTED MEDIUM INTENSITY RUNWAY/TAXIWAY/THRESHOLD LIGHT
- EXISTING HANDHOLE
- EXISTING RUNWAY END IDENTIFIER LIGHT (REIL)
- EXISTING AIRFIELD GUIDANCE SIGN
- EXISTING WIND CONE
- EXISTING WIND CONE CIRCUIT
- PRECISION APPROACH PATH INDICATOR (PAPI)
- REMOVE BASE MOUNTED RUNWAY LIGHT
- REMOVE STAKE MOUNTED RUNWAY/TAXIWAY LIGHT

IL. CONTRACT: **DI028**
 IL. LETTING ITEM: **01A**
 IL. PROJECT: **C73-4284**
 S.B.G. PROJECT: **3-17-SBGP-87 & 95**

SURVEY BOOK # BOOK #

REVISIONS		
NUMBER	BY	DATE



DIXON MUNICIPAL AIRPORT
DIXON, ILLINOIS
REHABILITATE LIGHTS ON BOTH RUNWAYS
EXISTING CONDITIONS AND PROPOSED REMOVALS
SHEET 2

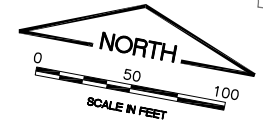
© Copyright CMT, Inc.

CMT
 CRAWFORD, MURPHY & TILLY, INC.
 CONSULTING ENGINEERS
 License No. 184-000613

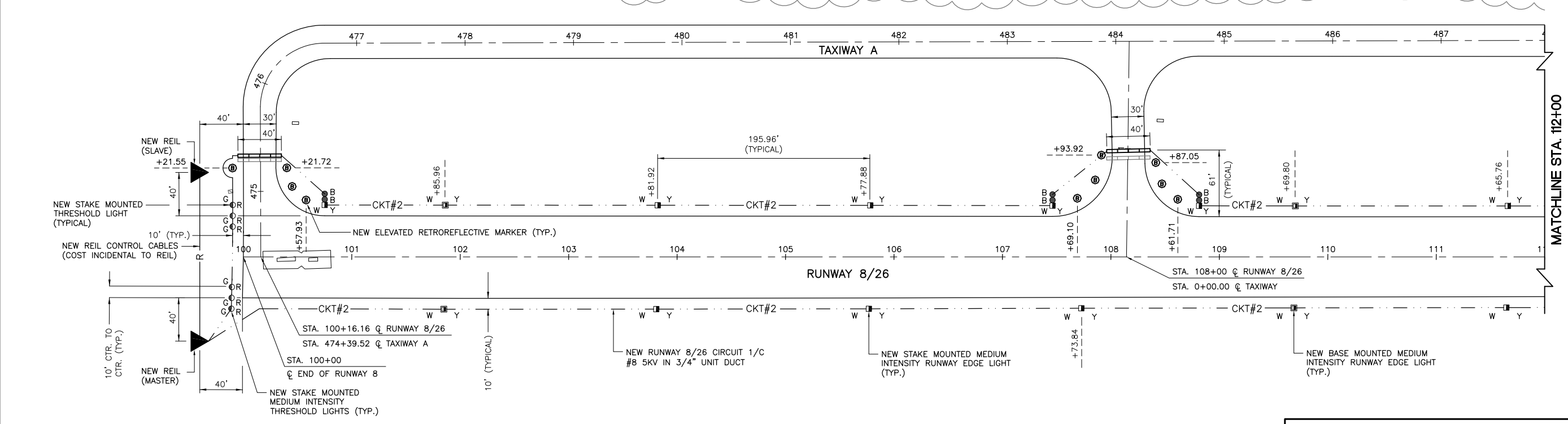
DESIGN BY:	RMD
DRAWN BY:	JRO
CHECKED BY:	DKP
APPROVED BY:	DLP
DATE:	7/28/17
JOB No:	15244-02

DATE: Monday, July 31, 2017 3:43:39 PM
 FILE: K:\Dixon\A\15244-02_Airfield Lighting\Draw\Sheets\Draw\17-2017\11_lighting-prop_1.dwg
 UPDATE BY: Jim Ohse
 LAYOUT: Layout1
 IMAGE FILES:
 REF DWG: 16airfield lighting.dwg
 6wmp.dwg

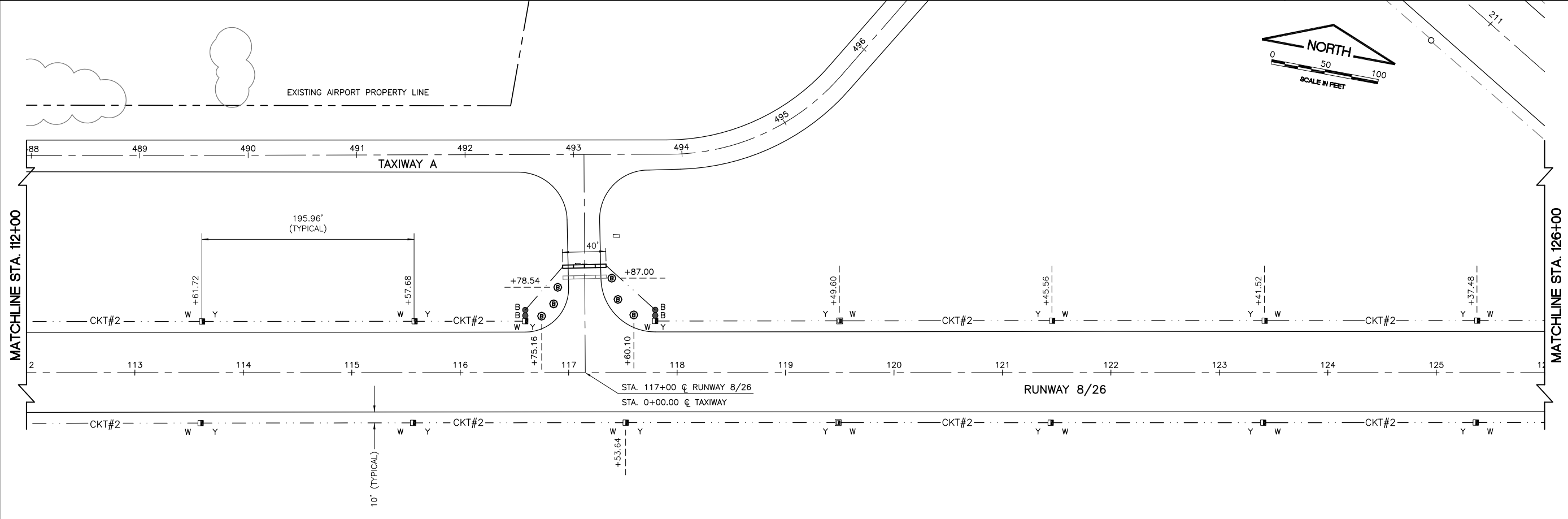
SEE AIRFIELD LIGHTING PLAN - SHEET 2 FOR NOTES AND LEGEND



EXISTING AIRPORT PROPERTY LINE



VIEW 1 - BASE BID WORK

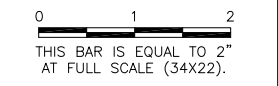


VIEW 2 - BASE BID WORK

I.L. CONTRACT: **DI028**
 I.L. LETTING ITEM: **01A**
 I.L. PROJECT: **C73-4284**
 S.B.G. PROJECT: **3-17-SBGP-87 & 95**

SURVEY BOOK # BOOK #

REVISIONS		
NUMBER	BY	DATE



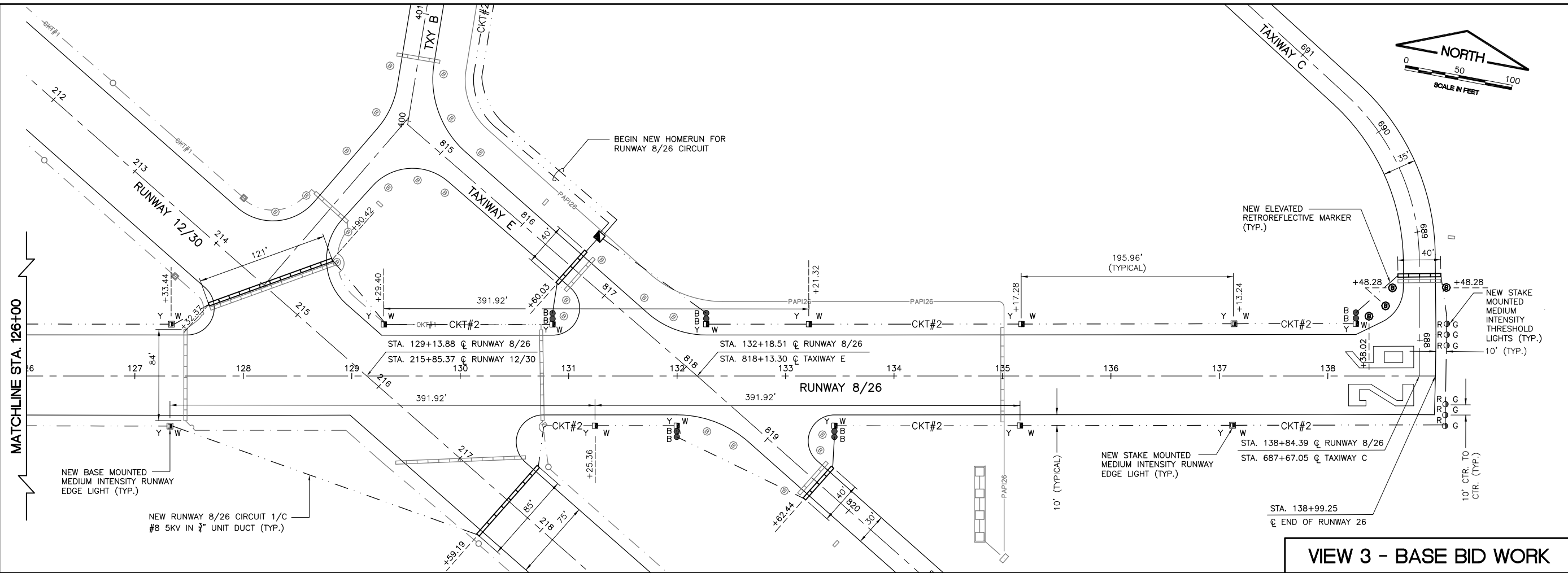
DIXON MUNICIPAL AIRPORT
DIXON, ILLINOIS
REHABILITATE LIGHTS ON BOTH RUNWAYS
AIRFIELD LIGHTING PLAN - SHEET 1

© Copyright CMT, Inc.
CMT
 CRAWFORD, MURPHY & TILLY, INC.
 CONSULTING ENGINEERS
 License No. 184-000613

DESIGN BY: RMD
 DRAWN BY: JRO
 CHECKED BY: DKP
 APPROVED BY: DLP
 DATE: 7/28/17
 JOB No: 15244-02

FINAL
 SHEET 11 OF 16 SHEETS

DATE: Monday, July 31, 2017 3:44:18 PM
 FILE: K:\Dixon\15244-02_Airfield Lighting\Draw Sheets\Draw\12_lighting-prop_2.dwg
 UPDATE BY: Jim Ohse
 LAYOUT: Layout1
 KREF DWG: beam_lighting.dwg
 6wasespse-uxon-dwg.dwg
 :STHIL IMAGE FILES:

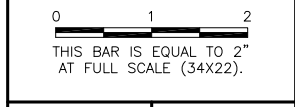


VIEW 3 - BASE BID WORK

IL CONTRACT: **D1028**
 IL LETTING ITEM: **01A**
 IL PROJECT: **C73-4284**
 S.B.G. PROJECT: **3-17-SBGP-87 & 95**

SURVEY BOOK # BOOK #

REVISIONS		
NUMBER	BY	DATE



NOTES

1. THE CONTRACTOR SHALL VERIFY THE EXISTING RUNWAY/TAXIWAY LIGHTING CIRCUITS ARE OPERATIONAL AT THE END OF EACH WORKING DAY FOR TAXIWAYS AND RUNWAYS TO REMAIN OPEN.
2. THE ROUTING OF PROPOSED AND EXISTING CABLE SHOWN IS FOR INFORMATION ONLY. THE EXACT ROUTING SHALL BE FIELD COORDINATED WITH THE RESIDENT ENGINEER.
3. ANY EXISTING CABLE MARKERS THAT ARE DISTURBED SHALL BE REMOVED AND REINSTALLED AT THE SAME LOCATION, COST SHALL BE INCIDENTAL TO CONTRACT.
4. THE EXISTING TAXIWAY AND RUNWAY AIRFIELD LIGHTING CIRCUITS, FAA CABLES AND OTHER AIRPORT ELECTRICAL CABLES SHALL REMAIN IN SERVICE UNTIL REPLACED AS DIRECTED BY THE ENGINEER. ALL TEMPORARY CABLING AND SPLICING SHALL BE CONSIDERED INCIDENTAL TO CONTRACT.
5. AT ANY LOCATION WHERE THE PROPOSED DUCT OR CABLE ROUTE CROSSES AN EXISTING UTILITY, THE CONTRACTOR SHALL HAND DIG AND LOCATE THE EXISTING UTILITY PRIOR TO TRENCHING. COST OF LOCATING ALL EXISTING UTILITIES SHALL BE INCIDENTAL TO THE CONTRACT.
6. CONTRACTOR SHALL PROVIDE PULL WIRE FOR ALL DUCT BANKS AND CAP THE UNUSED DUCT BANKS FOR FUTURE USE.
7. ALL SPLICES OF PROPOSED AND EXISTING CABLES IN ELECTRICAL MANHOLES, HANDHOLES AND LIGHT BASES SHALL BE CONSIDERED INCIDENTAL TO THE CONTRACT.
8. PROPOSED DUCT MARKERS SHALL BE INSTALLED AT ALL EXISTING AND PROPOSED CONDUIT AND DUCT BANK LOCATIONS AS SHOWN ON THE PLANS (SEE DUCT MARKER DETAIL).
9. ALL EXISTING CIRCUITS TO BE ABANDONED SHALL BE REMOVED FROM ALL CONDUITS/DUCT BANKS/UNIT DUCT (COST INCIDENTAL).
10. NEW 4-1/C #8 5KV, L-824 TYPE C CABLES (CIRCUIT #1 & #2) IN EXISTING DUCT BANK TO VAULT.
11. CONTRACTOR SHALL INSTALL NEW 4-1/C #8 5KV, L-824 TYPE C CABLES, CIRCUIT #1 & #2 IN EXISTING CONDUITS TO EXISTING AIRFIELD LIGHTING REGULATOR. REMOVAL OF EXISTING CABLES AND INSTALLATION/CONNECTION OF NEW CIRCUITS SHALL BE INCIDENTAL TO THE CONTRACT.
12. CONTRACTOR SHALL REMOVE AIRFIELD LIGHTING CABLES FOR CIRCUITS #1 & #2 AND INSTALL NEW CIRCUITS IN EXISTING CONDUITS FROM HANDHOLE TO HIGH VOLTAGE WIREWAY INSIDE VAULT. INSTALL NEW L-823 CONNECTORS. COST OF REMOVAL AND INSTALLATION OF NEW L-823 CONNECTORS SHALL BE INCIDENTAL TO THE INSTALLATION OF NEW AIRFIELD LIGHTING CABLE.
13. ALL NEW 4" DIRECTIONAL BORE SHALL BE INSTALLED 5' FROM EDGE OF EXISTING PAVEMENT ON BOTH SIDES OF THE CROSSING TAXIWAY/RUNWAY.

LEGEND

- EXISTING BUILDING
- EXISTING PAVEMENT
- NEW RUNWAY 12/30 HOMERUN CIRCUIT 1/C #8 5KV (ADDITIVE ALTERNATE #1)
- NEW RUNWAY 8/26 CIRCUIT 1/C #8 5KV IN 3/4" UNIT DUCT
- NEW RUNWAY END IDENTIFIER LIGHT (REIL) CABLES (PER REIL MANUFACTURER)
- EXISTING RUNWAY 12/30 CIRCUIT 1/C #8 5KV
- AIRPORT PROPERTY LINE
-

**DIXON MUNICIPAL AIRPORT
 DIXON, ILLINOIS
 REHABILITATE LIGHTS ON BOTH RUNWAYS
 AIRFIELD LIGHTING PLAN - SHEET 2**

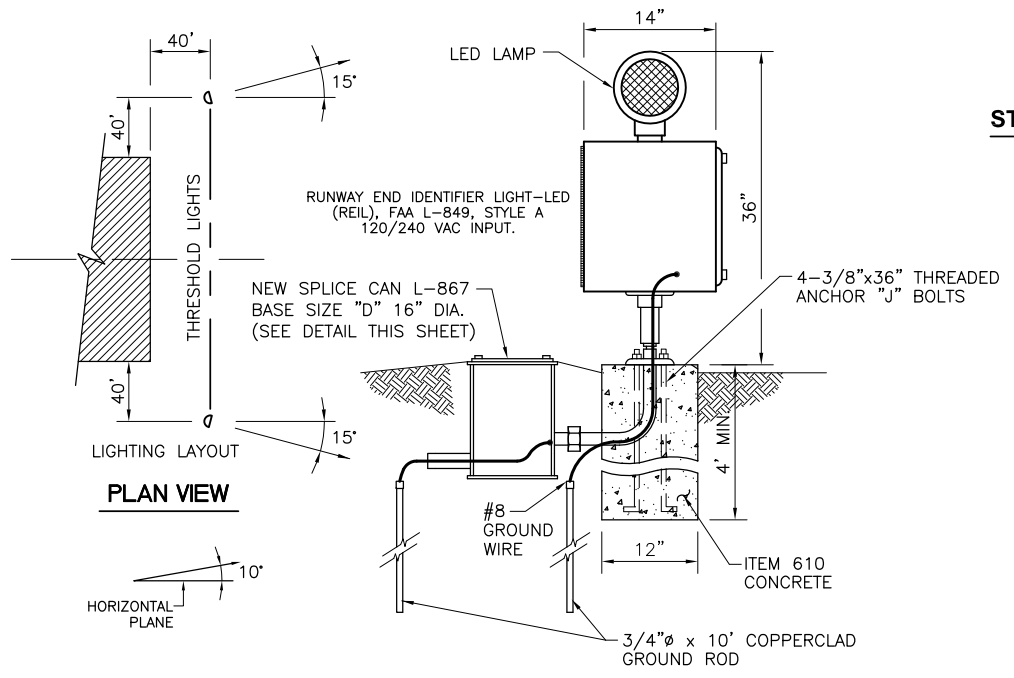
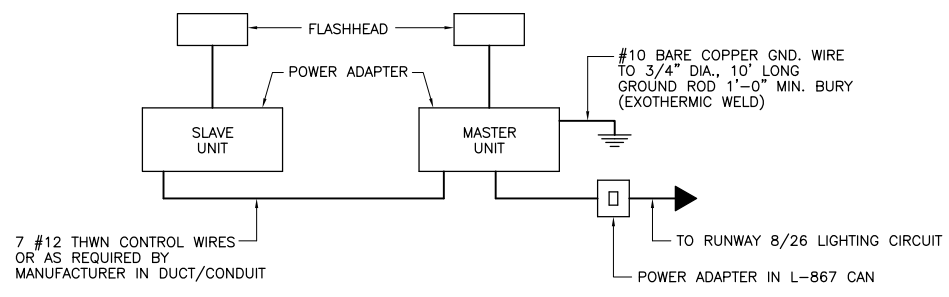
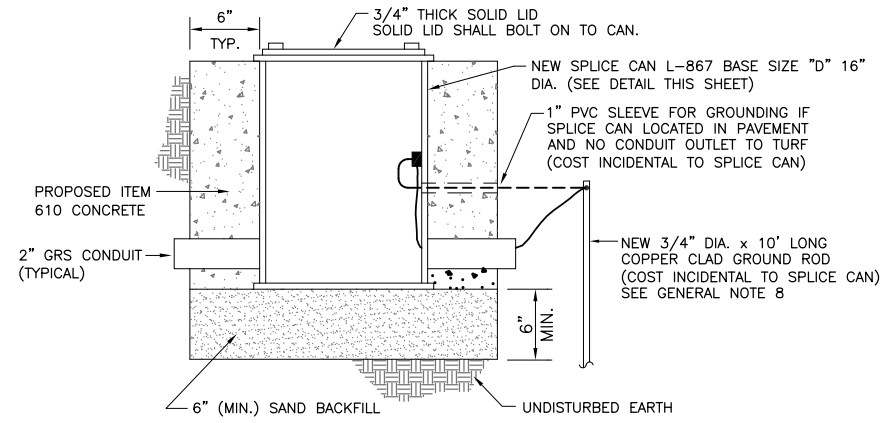
© Copyright CMT, Inc.

CMT
 CRAWFORD, MURPHY & TILLY, INC.
 CONSULTING ENGINEERS
 License No. 194-000613

DESIGN BY:	RMD
DRAWN BY:	JRO
CHECKED BY:	DKP
APPROVED BY:	DLP
DATE:	7/28/17
JOB No:	15244-02

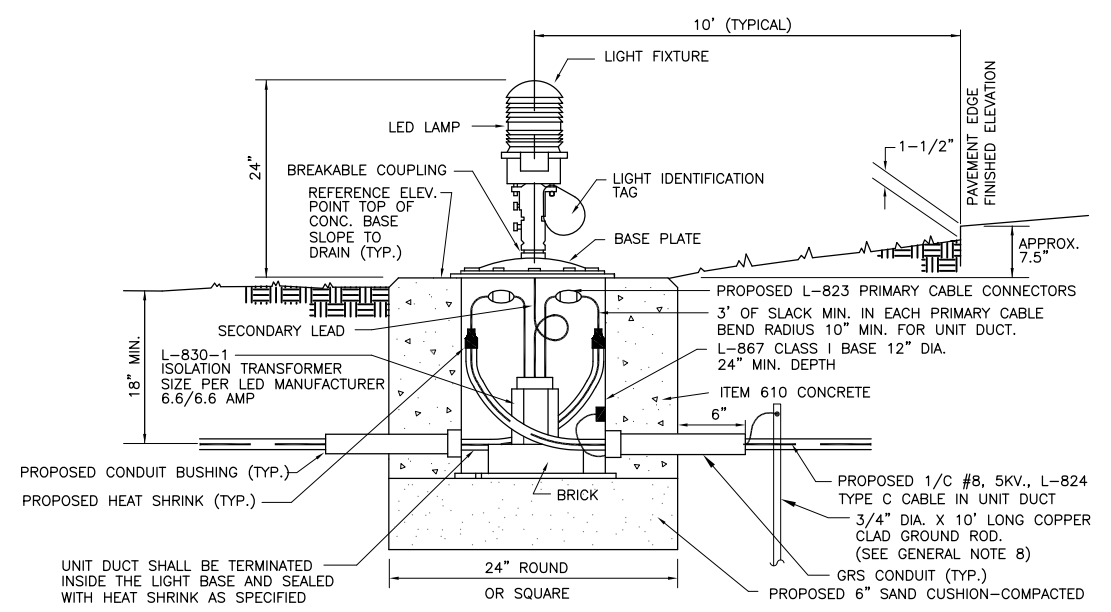
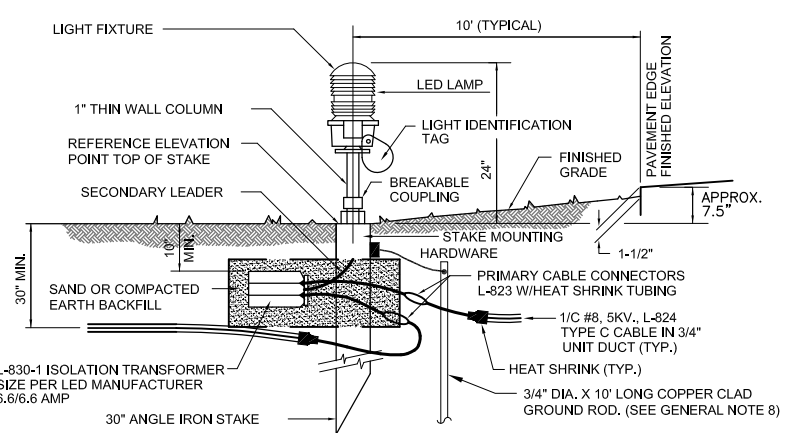
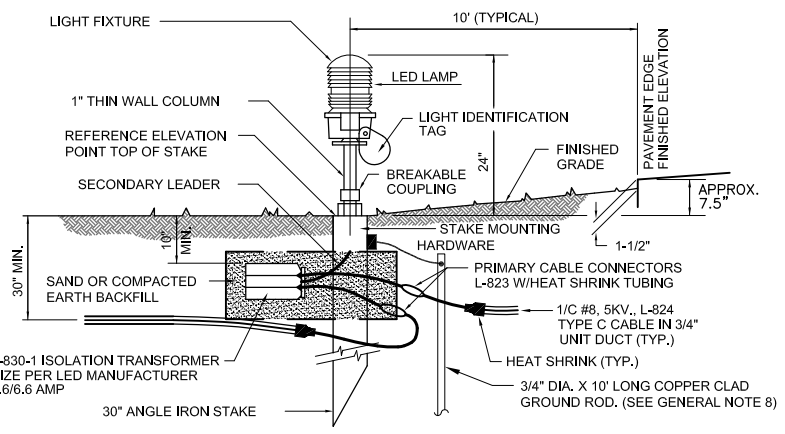
FINAL

DATE: Monday, July 31, 2017, 3:45:49 PM
 FILE: K:\Dixon\Draw\Lighting\Draw\Sheets\Draw\7-27-2017\15-Electrical Details - Sheet 2.dwg
 UPDATE BY: Jim Ohse
 LAYOUT: Layout1
 REF: DWG: Drawing - Detail.dwg
 IMAGE FILES: CMT_3C_cmyk.jpg
 Ed:\cgm\cmt\pic\gk.jpg
 K:\Dixon\Draw\Lighting\Draw\Sheets\Draw\7-27-2017\15-Electrical Details - Sheet 2.dwg



NOTES:

1. THE PROPOSED REIL SYSTEM SHALL BE L-849I, STYLE A (CURRENT DRIVEN) COMPLETED WITH SPLICE CAN, FLASHHEADS, POWER ADAPTERS, FRANGIBLE FITTINGS AND ALL NECESSARY EQUIPMENT FOR A COMPLETE AND OPERATIONAL SYSTEM. REIL UNIT FAA APPROVED TYPE L-849I.



- GENERAL NOTES:**
1. THE CONCRETE BASE FOR BASE MOUNTED LIGHTS SHALL BE TROWEL FINISHED WITH A 45° BEVELED EDGE. SLOPE TO DRAIN (610).
 2. TRANSFORMER HOLDER SHALL BE ANY COMMERCIALY AVAILABLE BRICK.
 3. BREAKING GROOVE COUPLINGS SHALL NOT BE OVER 1" ABOVE GROUND LINE.
 4. ISOLATION TRANSFORMERS COME WITH A FACTORY INSTALLED CLASS (TYPE 1, CLASS A, STYLE 2) AND RECEPTACLE (TYPE 1, CLASS A, STYLE 9). A TYPE 1, CLASS B, STYLE 3 PLUG AND TYPE 1, CLASS B, STYLE 10 RECEPTACLE SHALL BE INSTALLED ON THE 1/C, No. 8, 5000 V., L-824 TYPE C CABLES FOR CONNECTION TO EACH TRANSFORMER.
 5. TO FURTHER REDUCE THE POSSIBILITY OF WATER/MOISTURE ENTRANCE INTO THE CONNECTOR BETWEEN THE CABLE AND THE FIELD ATTACHED CONNECTOR, IT IS REQUIRED THAT A HEAT SHRINKABLE TUBING WITH INTERNAL ADHESIVE BE APPLIED OVER THE ENTIRE CABLE CONNECTOR.
 6. ALL LIGHTS, CABLES AND TRANSFORMERS TO BE REMOVED SHALL REMAIN THE PROPERTY OF THE AIRPORT. AT THE DISCRETION OF THE AIRPORT MANAGER, THE CONTRACTOR MAY BE REQUIRED TO DISPOSE OF THESE MATERIALS OFFSITE AT NO ADDITIONAL COST.
 7. TAXIWAY ELEVATED RETROREFLECTIVE MARKERS SHALL REFLECT BLUE, TAXIWAY LIGHTS SHALL BE BLUE, RUNWAY LIGHTS SHALL HAVE A CLEAR OR 180° AMBER/CLEAR LENS AND THRESHOLD LIGHTS SHALL HAVE GREEN/RED LENS AS DESIGNATED ON PLANS.
 8. INSTALL 1/C #6 AWG BARE COPPER GROUND JUMPER CONNECTED TO GROUND LUG INSIDE BASE CAN OR STAKE AND EXOTHERMICALLY WELDED TO GROUND ROD.

IL CONTRACT: **DI028**
 IL LETTING ITEM: **01A**
 IL PROJECT: **C73-4284**
 S.B.G. PROJECT: **3-17-SBGP-87 & 95**

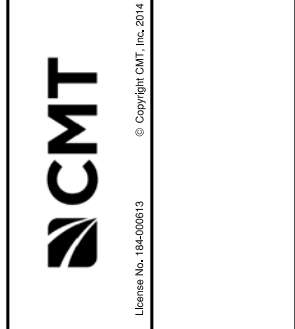
SURVEY BOOK # BOOK #

REVISIONS		
NUMBER	BY	DATE

0 1 2
 THIS BAR IS EQUAL TO 2" AT FULL SCALE (34X22).

**DIXON MUNICIPAL AIRPORT
 DIXON, ILLINOIS
 REHABILITATE LIGHTS ON BOTH RUNWAYS**

ELECTRICAL DETAILS - SHEET 2



DESIGN BY:	RMD
DRAWN BY:	JRO
CHECKED BY:	DKP
APPROVED BY:	DLP
DATE:	7/28/17
JOB No:	15244-02

FINAL

SHEET 15 OF 16 SHEETS

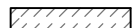
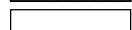


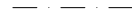

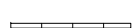






KREF DWG: Dixon-base.dwg

IMAGE TILES:

UPDATE BY: jim Ohse
LAYOUT: Layout1

DATE: Monday, July 31, 2017, 3:46:13 PM
FILE: K:\Dixon\19244-02_maintenance\Draw\Sheets\Incl_7-27-2017\16 Erosion Control Plan.dwg

LEGEND

-  EXISTING BUILDING
-  EXISTING PAVEMENT
-  NEW RUNWAY 8/26 CIRCUIT 1/C #8 5KV IN 3/4" UNIT DUCT
-  NEW RUNWAY 12/30 HOMERUN CIRCUIT 1/C #8 5KV IN 3/4" UNIT DUCT
-  AIRPORT PROPERTY LINE
-  NEW 4" CONDUIT (BORED & JACKED)
-  EXISTING CONDUIT
-  NEW STAKE MOUNTED MEDIUM INTENSITY RUNWAY LIGHT
-  NEW BASE MOUNTED MEDIUM INTENSITY RUNWAY LIGHT
-  NEW STAKE MOUNTED MEDIUM INTENSITY THRESHOLD LIGHT
-  NEW HANDHOLE
-  NEW RUNWAY END IDENTIFIER LIGHT (REIL)
-  NEW EROSION CONTROL BLANKET (156) AND SEEDING (901)

NOTES

1. THE SITE DISTURBANCE IS LESS THAN 1 ACRE. THE PROJECT DOES NOT REQUIRE NPDES GENERAL PERMIT NO. 2. THE CONTRACTOR WILL STILL BE REQUIRED TO USE BEST CONSTRUCTION PRACTICES TO COMPLY WITH THE REQUIREMENTS OF THE NATIONAL POLLUTANT DISCHARGE ELIMINATION SYSTEM (NPDES) REQUIREMENTS FOR CONSTRUCTION SITE ACTIVITIES.
2. ALL PROJECT AREAS, INCLUDING STOCKPILES, ABANDONED HAUL ROADS AND STAGING AREAS, AS SHOWN ON THE PLANS OR COORDINATED IN THE FIELD, SHALL HAVE 4 INCHES OF TOPSOIL PLACED, BE SEEDED AND MULCHED IN ACCORDANCE WITH THE SPECIFICATIONS. AREAS DISTURBED WITHIN THE PROJECT LIMITS AND OUTSIDE THE PROJECT LIMITS WILL BE SEEDED AND MULCHED BY THE CONTRACTOR AT HIS COST AND RESTORED TO ORIGINAL CONDITIONS.
3. FOR DETAILS SEE THIS SHEET.
4. FOR LANDSCAPING LIMITS FOR JACKING PITS SEE THIS SHEET.
5. IN AREAS WHERE WORK IS COMPLETE, PERMANENT STABILIZATION SHALL OCCUR WITHIN 7 DAYS OF COMPLETION, AND IN AREAS WHERE WORK WILL BE TEMPORARILY CEASED FOR 14 DAYS OR MORE, TEMPORARY STABILIZATION SHALL OCCUR BY THE 14TH DAY AFTER WORK HAS CEASED. TEMPORARY STABILIZATION SHALL BE CONSIDERED INCIDENTAL TO THE CONTRACT.
6. IF REQUIRED TEMPORARY EROSION CONTROL SEED SHALL CONSIST OF SPRING OATS FROM MARCH 1ST TO JUNE 30TH AND WINTER WHEAT OR CEREAL RYE FROM JULY 1ST THRU NOVEMBER 15TH. THE SEED SHALL BE APPLIED BY HAND BROADCASTING TO ACHIEVE A REASONABLE UNIFORM COVERAGE AT A RATE OF 100 LB/ACRE. NO DIRECT PAYMENT WILL BE MADE FOR TEMPORARY EROSION CONTROL SEEDING. IT SHALL BE CONSIDERED INCIDENTAL TO THE CONTRACT.
7. CONTRACTOR SHALL PROVIDE CONCRETE WASHOUT BOX FOR ALL CONCRETE READY MIX TRUCKS OR EACH READY MIX TRUCK SHALL BE EQUIPPED WITH A WASH OUT SYSTEM.
8. EROSION CONTROL BLANKET AND SEEDING ARE TO BE INCIDENTAL TO CONTRACT.

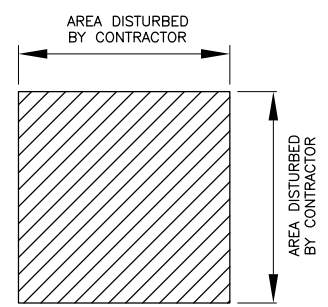
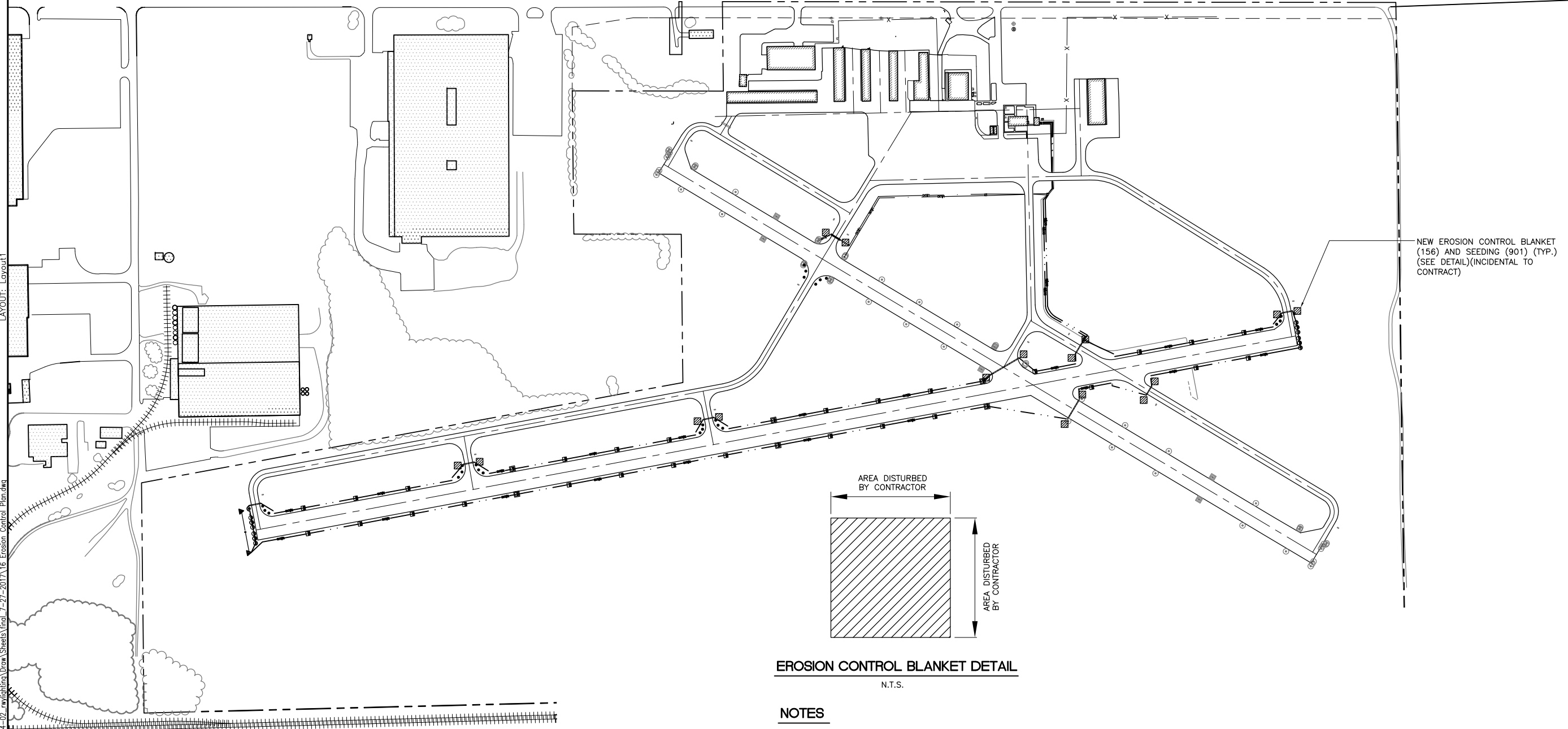
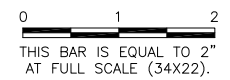


IL. CONTRACT: **DI028**
 IL. LETTING ITEM: **01A**
 IL. PROJECT: **C73-4284**
 S.B.G. PROJECT: **3-17-SBGP-87 & 95**

SURVEY BOOK # BOOK #

REVISIONS

NUMBER	BY	DATE



EROSION CONTROL BLANKET DETAIL

N.T.S.

NOTES

1. EROSION CONTROL MATERIAL SHALL BE PLACED LOOSELY OVER GROUND SURFACE. DO NOT STRETCH.

**DIXON MUNICIPAL AIRPORT
 DIXON, ILLINOIS
 REHABILITATE LIGHTS ON BOTH RUNWAYS
 EROSION CONTROL PLAN**

© Copyright CMT, Inc.

CMT
 CRAWFORD, MURPHY & TILLY, INC.
 CONSULTING ENGINEERS
 License No. 184-000613

DESIGN BY:	RMD
DRAWN BY:	JRO
CHECKED BY:	DKP
APPROVED BY:	DLP
DATE:	7/28/17
JOB No:	15244-02

FINAL