

STATE OF ILLINOIS  
DEPARTMENT OF TRANSPORTATION

F.A.P. RTE.	SECTION	COUNTY	TOTAL SHEETS	SHEET NO.
776	D9 PAVEMENT REPAIR 2018-2	SALINE	10	1
		ILLINOIS	CONTRACT NO. 78581	

FOR INDEX OF SHEETS, SEE SHEET NO. 3  
FOR SUMMARY OF QUANTITIES, SEE SHEET NO. 4-5

**PROPOSED  
HIGHWAY PLANS**

FAP ROUTE 776  
(IL 142)  
SECTION D9 PAVEMENT REPAIR 2018-2

**TRAFFIC DATA**

IL 142 (STATE ST - NORTH LEG)  
IL 142 (STATE ST - SOUTH LEG)  
LOCUST ST (EAST LEG)  
LOCUST ST (WEST LEG)

5100 WITH 11.3% TRUCKS (2015 ADT)  
5100 WITH 11.3% TRUCKS (2015 ADT)  
3450 (2015 ADT)  
2500 (2015 ADT)

**PAVEMENT REPAIR  
SALINE COUNTY**

**TOWNSHIP  
EAST ELDORADO**

**POSTED SPEED  
30 MPH**

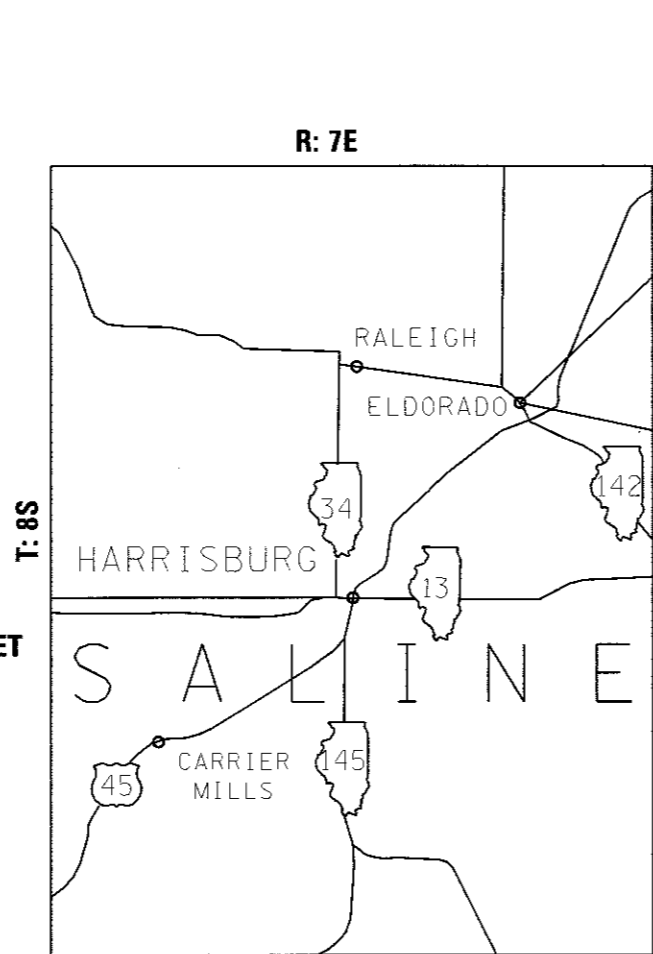
**DESIGN DESIGNATION  
5200(17) MINOR ARTERIAL 4.59 (PCC-20)**

**COORDINATE SYSTEM  
EPSG: 102671  
NAD 1983 STATEPLANE ILLINOIS EAST FIPS 1201 FEET**

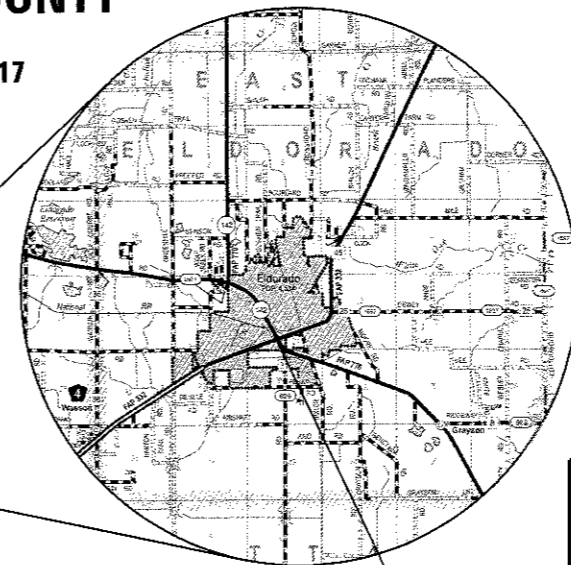
J.U.L.I.E.  
JOINT UTILITY LOCATION INFORMATION FOR EXCAVATION  
1-800-892-0123  
OR 811

PROJECT ENGINEER: SUSAN POE  
PROJECT DESIGNER: JARED HARP

CONTRACT NO. 78581

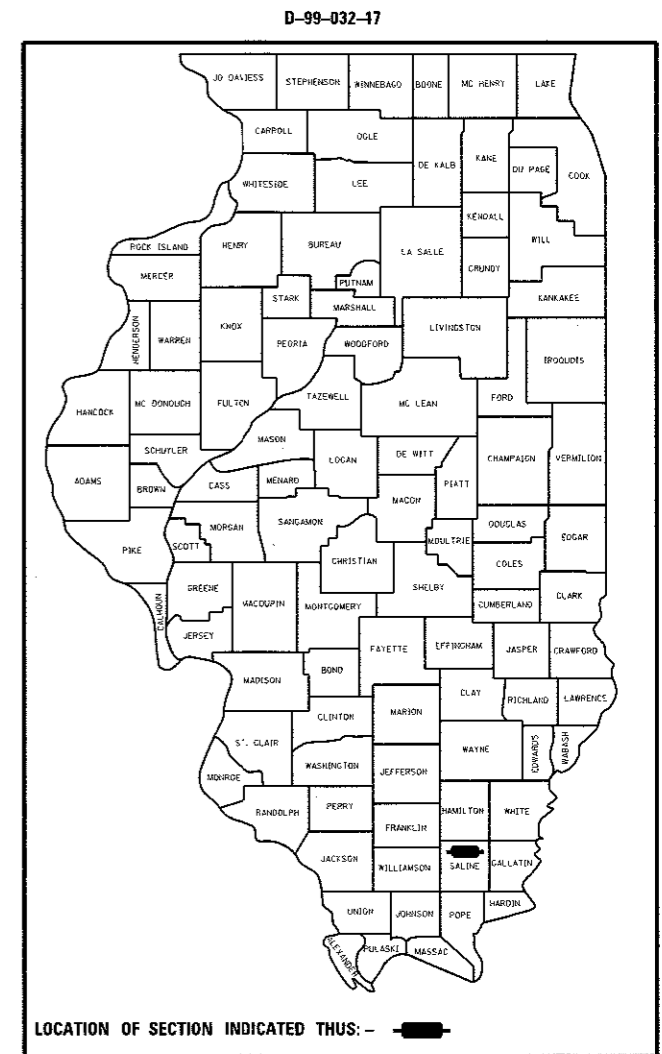


C-99-032-17



**PROJECT LOCATION**  
IL 142 STA. 361+44 TO STA. 363+04  
AT THE INTERSECTION WITH LOCUST STREET

GROSS LENGTH = 160.00 FT. = 0.03 MILES  
NET LENGTH = 160.00 FT. = 0.03 MILES



STATE OF ILLINOIS  
DEPARTMENT OF TRANSPORTATION

SUBMITTED July 6 20 17  
Jeffrey A. Keen  
REGION FIVE ENGINEER

Aug 18 20 17  
Moureen M. Addis, P.E.  
ENGINEER OF DESIGN AND ENVIRONMENT

Aug 18 20 17  
David A. [Signature]  
DIRECTOR OF PROGRAM DEVELOPMENT

**PRINTED BY THE AUTHORITY  
OF THE STATE OF ILLINOIS**

Prepared By: *J. Ellis*  
DISTRICT STUDIES & PLANS ENGINEER

Examined By: *Nancy Hoi*  
DISTRICT LAND ACQUISITION ENGINEER

Examined By: *Cassie Nelson*  
DISTRICT PROGRAM DEVELOPMENT ENGINEER

Examined By: *Karl Nelson*  
DISTRICT OPERATIONS ENGINEER

Examined By: *KARL*  
DISTRICT PROJECT IMPLEMENTATION ENGINEER

Examined By: *Daryl J. Seibert*  
DISTRICT CONSTRUCTION ENGINEER

Examined By: *R. Coe*  
DISTRICT MATERIALS ENGINEER

FILE NAME =	USER NAME = harpja	DESIGNED -	REVISED -
p:\11\084EBIDINTEC\Illinois.gov\PW100T\Documents\100T_Offices\District_9\Projects\78581\DRAWN\CABsheets\Q978581.sht.dgn		CHECKED -	REVISED -
		DATE -	REVISED -

**STATE OF ILLINOIS  
DEPARTMENT OF TRANSPORTATION**

**SIGNATURE SHEET**

SCALE: SHEET OF SHEETS STA. TO STA.

F.A.P. RTE. 776	SECTION 09 PAVEMENT REPAIR 2018-2	COUNTY SALINE	TOTAL SHEETS 10	SHEET NO. 2
CONTRACT NO. 78581				
ILLINOIS FED. AID PROJECT				

# INDEX OF SHEETS

SHEET NO.	DESCRIPTION
1	COVER SHEET
2	SIGNATURE SHEET
3	INDEX OF SHEETS, GENERAL NOTES, AND LIST OF STANDARDS
4-5	SUMMARY OF QUANTITIES
6	IL 142 TYPICAL SECTION
7	PAVEMENT REPAIR AND PATCHING SCHEDULE PAVEMENT MARKING SCHEDULE
8	TRAFFIC CONTROL SHEET
9	REMOVAL AND CONSTRUCTION SHEET
10	PAVEMENT MARKING SHEET

# LIST OF STANDARDS

- 000001-06 STANDARD SYMBOLS, ABBREVIATIONS, AND PATTERNS
- 001001-02 AREAS OF REINFORCEMENT BARS
- 001006 DECIMAL OF AN INCH AND OF A FOOT
- 420001-08 PAVEMENT JOINTS
- 420101-05 24 FT JOINTED PCC PAVEMENT
- 420701-03 PAVEMENT WELDED WIRE REINFORCEMENT
- 442101-07 CLASS B PATCHES
- 701301-04 LANE CLOSURE, TWO LANE, TWO WAY, SHORT TIME OPERATIONS
- 701801-06 SIDEWALK CORNER OR CROSSWALK CLOSURE
- 701901-06 TRAFFIC CONTROL DEVICES
- 780001-05 TYPICAL PAVEMENT MARKINGS
- 781001-04 TYPICAL APPLICATIONS RAISED REFELCTIVE PAVEMENT MARKERS
- BLR22-7 TWO LANE, TWO WAY, RURAL TRAFFIC, ROAD CLOSED TO THRU TRAFFIC

# GENERAL NOTES

QUANTITIES SHOWN IN THE PLANS FOR PATCHING ARE ESTIMATES. THE ACTUAL AMOUNT OF PATCHING REQUIRED WILL BE DETERMINED BY THE ENGINEER.

AT ALL LOCATIONS WHERE THE PROPOSED HOT MIX ASPHALT OR CONCRETE PAVEMENT JOINS AN EXISTING HOT MIX ASPHALT OR CONCRETE PAVEMENT, A FULL DEPTH SAWED JOINT SHALL BE CONSTRUCTED. THE COST OF THIS JOINT WILL BE INCLUDED IN THE COST OF THE TYPE OF PAVEMENT BEING CONSTRUCTED.

PRIOR TO PLACEMENT OF THE FINAL PAVEMENT MARKINGS THE RESIDENT ENGINEER SHALL CONTACT THE BUREAU OF OPERATIONS AND ARRANGE FOR INSPECTION AND APPROVAL OF THE PAVEMENT MARKING LAYOUT.

THERE ARE NO AVAILABLE WASTE SITES ON THE EXISTING RIGHT OF WAY WITHIN THE PROJECT LIMITS. DISPOSAL WILL BE THE RESPONSIBILITY OF THE CONTRACTOR AND WASTE MUST BE DISPOSED OF IN ACCORDANCE WITH ARTICLE 202.03 OF THE STANDARD SPECIFICATIONS.

COMMITMENTS: NONE

FILE NAME =	USER NAME = harpja	DESIGNED -	REVISED -	<b>STATE OF ILLINOIS DEPARTMENT OF TRANSPORTATION</b>	<b>INDEX OF SHEETS, GENERAL NOTES, AND LIST OF STANDARDS</b>	F.A.P. RTE.	SECTION	COUNTY	TOTAL SHEETS	SHEET NO.
p:\11084EBID\INTEG\illinois.gov\PIW00T\Documents\IDOT Offices\District 9\Projects\78581\Drawings\CA\Sheets\0978581.sht.dgn	DRAWN	REVISED -	776			09 PAVEMENT REPAIR 2018-2	SALINE	10	3	
MODELNAME#	PLOT SCALE = 100.0000 / in.	CHECKED -	REVISED -			CONTRACT NO. 78581				
	PLOT DATE = 7/7/2017	DATE -	REVISED -			ILLINOIS FED. AID PROJECT				
SCALE: SHEET OF SHEETS STA. TO STA.										



# SUMMARY OF QUANTITIES - CONT

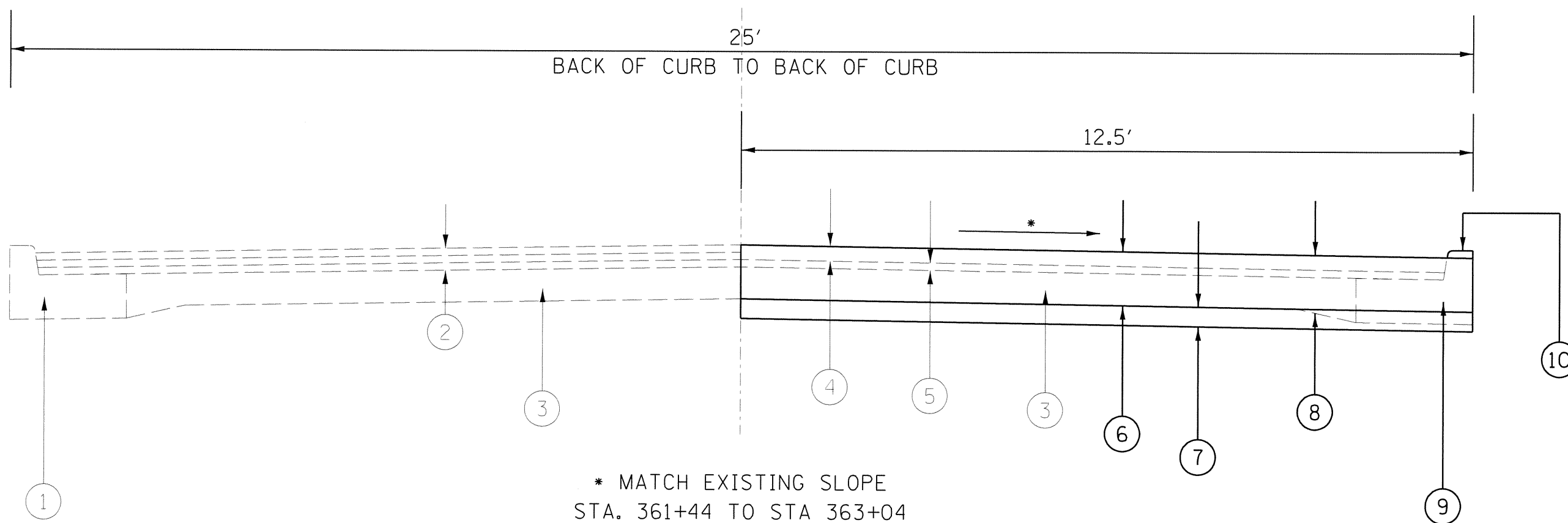
COUNTY:	SALINE
ROUTE:	FAP 776 (IL 142)
FUNDING:	100% STATE
LOCATION:	RURAL
TOTAL QUANTITY	ROADWAY 0004

CODE NUMBER	ITEM DESCRIPTION	UNIT	TOTAL QUANTITY	ROADWAY 0004
67100100	MOBILIZATION	LSUM	1	1
70101835	TRAFFIC CONTROL AND PROTECTION, STANDARD BLR 22	LSUM	1	1
70200100	NIGHTTIME WORK ZONE LIGHTING	LSUM	1	1
* 78001110	PAINT PAVEMENT MARKING - LINE 4"	FOOT	231	231
* 78001180	PAINT PAVEMENT MARKING - LINE 24"	FOOT	12	12
78300200	RAISED REFLECTIVE PAVEMENT MARKER REMOVAL	EACH	2	2
X7015005	CHANGEABLE MESSAGE SIGN	CAL DA	54	54

7

\* SPECIALTY ITEM

☐ FAP 776 (IL 142)



- ① EXISTING CONCRETE CURB AND GUTTER TO REMAIN IN PLACE
- ② EXISTING 4.5" HMA RESURFACING
- ③ EXISTING 9"-6.5"-9" PCC PAVEMENT
- ④ EXISTING 3" PCC INLAY
- ⑤ EXISTING 1.5" HMA RESURFACING
- ⑥ PROPOSED PCC PAVEMENT 11" (JOINTED)
- ⑦ PROPOSED AGGREGATE BASE COURSE, TYPE B 4"
- ⑧ PROPOSED PAVEMENT REMOVAL
- ⑨ EXISTING CONCRETE CURB AND GUTTER TO BE REMOVED AND INCLUDED IN THE COST OF PAVEMENT REMOVAL
- ⑩ HAND FORM TO MATCH THE ADJACENT CURB IN THE AREAS THAT CURB WAS REMOVED. THIS WILL BE INCIDENTAL TO THE COST OF THE PAVEMENT OR THE CLASS B PATCH.

## PAVEMENT REPAIR AND PATCHING SCHEDULE

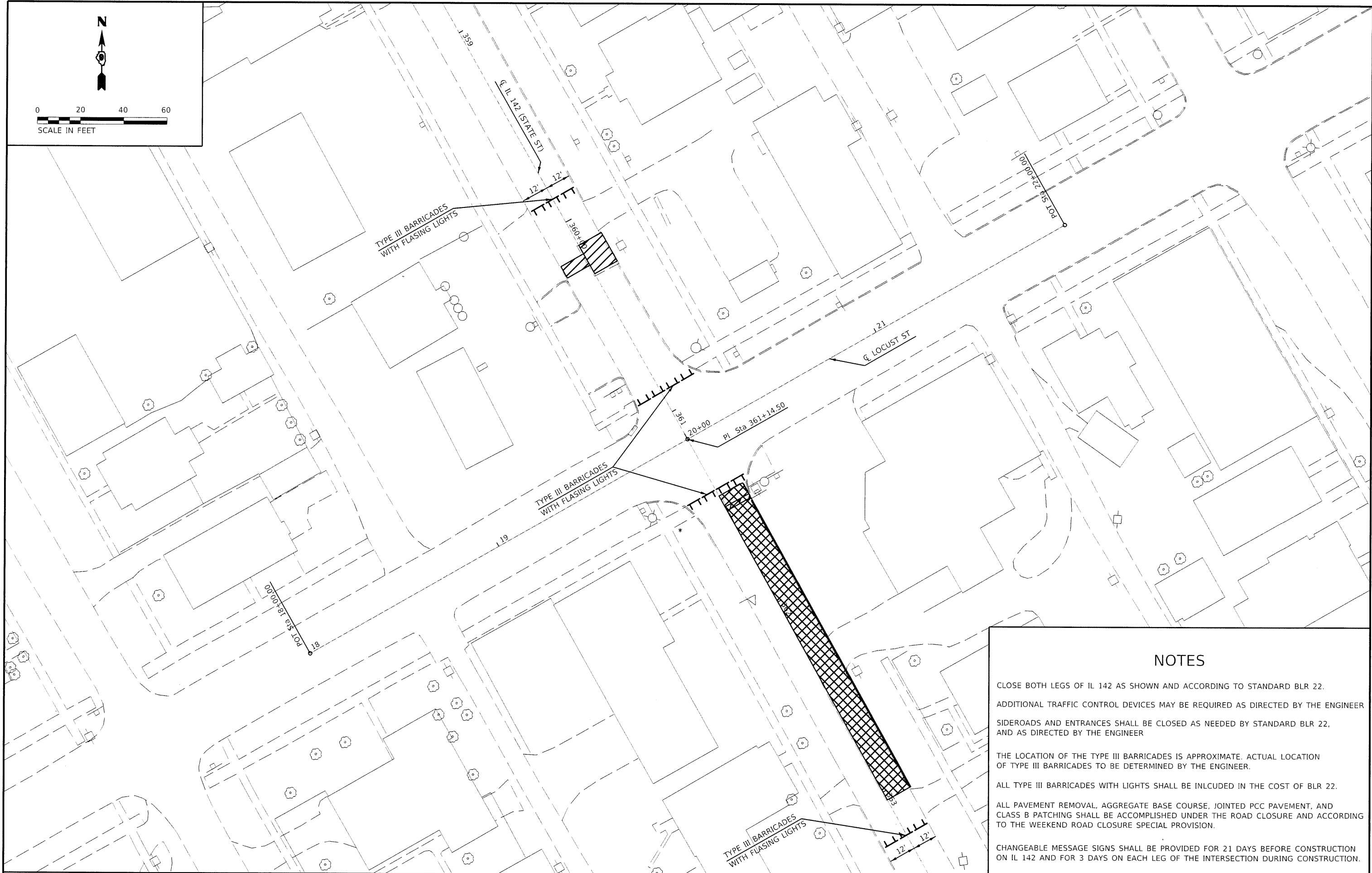
STATION (CENTER OF PATCH)	SIZE	PAVEMENT REMOVAL	AGGREGATE BASE COURSE TYPE B, 4"	PORTLAND CEMENT CONCRETE PAVEMENT 11" (JOINTED)	PROTECTIVE COAT	CLASS B PATCHES TYPE II, 12"	CLASS B PATCHES TYPE III, 12"	SAW CUTS	TIE BARS 3/4"	DOWEL BARS 1 1/2"	WELDED WIRE REINFORCEMENT
FOOT		SO YD	SO YD	SO YD	SO YD	SO YD	SO YD	FOOT	EACH	EACH	SO YD
L X W											
<b>FAP 776 ( IL 142)</b>											
361+44 LT TO 363+04 LT	160 X 12.5	214	223	223	223				79	22	
360+20 LT	15 X 12.5						21	67.5		20	21
360+20 RT	6 X 12.5					8		55.5		20	
<b>TOTALS</b>		<b>214</b>	<b>223</b>	<b>223</b>	<b>223</b>	<b>8</b>	<b>21</b>	<b>123</b>	<b>79</b>	<b>62</b>	<b>21</b>

## PAVEMENT MARKING SCHEDULE

LOCATION (STATION TO STATION)	LENGTH	PAINT PAVEMENT MARKING			RAISED REFLECTIVE PAVEMENT MARKER REMOVAL	REMARKS
		LINE 4"		LINE 24"		
		YELLOW	WHITE	WHITE		
		SKIP DASH	SOLID			
FOOT	FOOT	FOOT	FOOT	EACH		
<b>FAP 776 ( IL 142)</b>						
361+44 LT TO 363+04 LT	160	40	160		1	LEFT EDGE OF PAVEMENT AND CENTER-LINE SKIP DASH
361+51 LT					12	STOP BAR
360+12.5 LT TO 360+27.5 LT	15	10	15		1	LEFT EDGE OF PAVEMENT AND CENTER-LINE SKIP DASH
360+17 RT TO 360+23 RT	6		6			RIGHT EDGE OF PAVEMENT
<b>SUB-TOTALS</b>		<b>50</b>	<b>181</b>			
<b>TOTALS</b>			<b>231</b>	<b>12</b>	<b>2</b>	



0 20 40 60  
SCALE IN FEET



**NOTES**

CLOSE BOTH LEGS OF IL 142 AS SHOWN AND ACCORDING TO STANDARD BLR 22.  
 ADDITIONAL TRAFFIC CONTROL DEVICES MAY BE REQUIRED AS DIRECTED BY THE ENGINEER  
 SIDEROADS AND ENTRANCES SHALL BE CLOSED AS NEEDED BY STANDARD BLR 22, AND AS DIRECTED BY THE ENGINEER  
 THE LOCATION OF THE TYPE III BARRICADES IS APPROXIMATE. ACTUAL LOCATION OF TYPE III BARRICADES TO BE DETERMINED BY THE ENGINEER.  
 ALL TYPE III BARRICADES WITH LIGHTS SHALL BE INCLUDED IN THE COST OF BLR 22.  
 ALL PAVEMENT REMOVAL, AGGREGATE BASE COURSE, JOINTED PCC PAVEMENT, AND CLASS B PATCHING SHALL BE ACCOMPLISHED UNDER THE ROAD CLOSURE AND ACCORDING TO THE WEEKEND ROAD CLOSURE SPECIAL PROVISION.  
 CHANGEABLE MESSAGE SIGNS SHALL BE PROVIDED FOR 21 DAYS BEFORE CONSTRUCTION ON IL 142 AND FOR 3 DAYS ON EACH LEG OF THE INTERSECTION DURING CONSTRUCTION.

FILE NAME =	USER NAME = harja	DESIGNED -	REVISED -	<b>STATE OF ILLINOIS DEPARTMENT OF TRANSPORTATION</b>	<b>TRAFFIC CONTROL SHEET</b>	F.A.P. RTE. =	SECTION	COUNTY	TOTAL SHEETS	SHEET NO.	
p:\IL084EBID\INTEC\illinois.gov\PIWIDOT\Documents\100T Offices\District 9\Projects\78581\Drawings\CAD\Drawings\09\78581.sht.dgn		DRAWN -	REVISED -			776	D9 PAVEMENT REPAIR 2018-2	SALINE	10	8	
#MODELNAME#		CHECKED -	REVISED -			<b>CONTRACT NO. 78581</b>					
		DATE -	REVISED -			ILLINOIS FED. AID PROJECT					

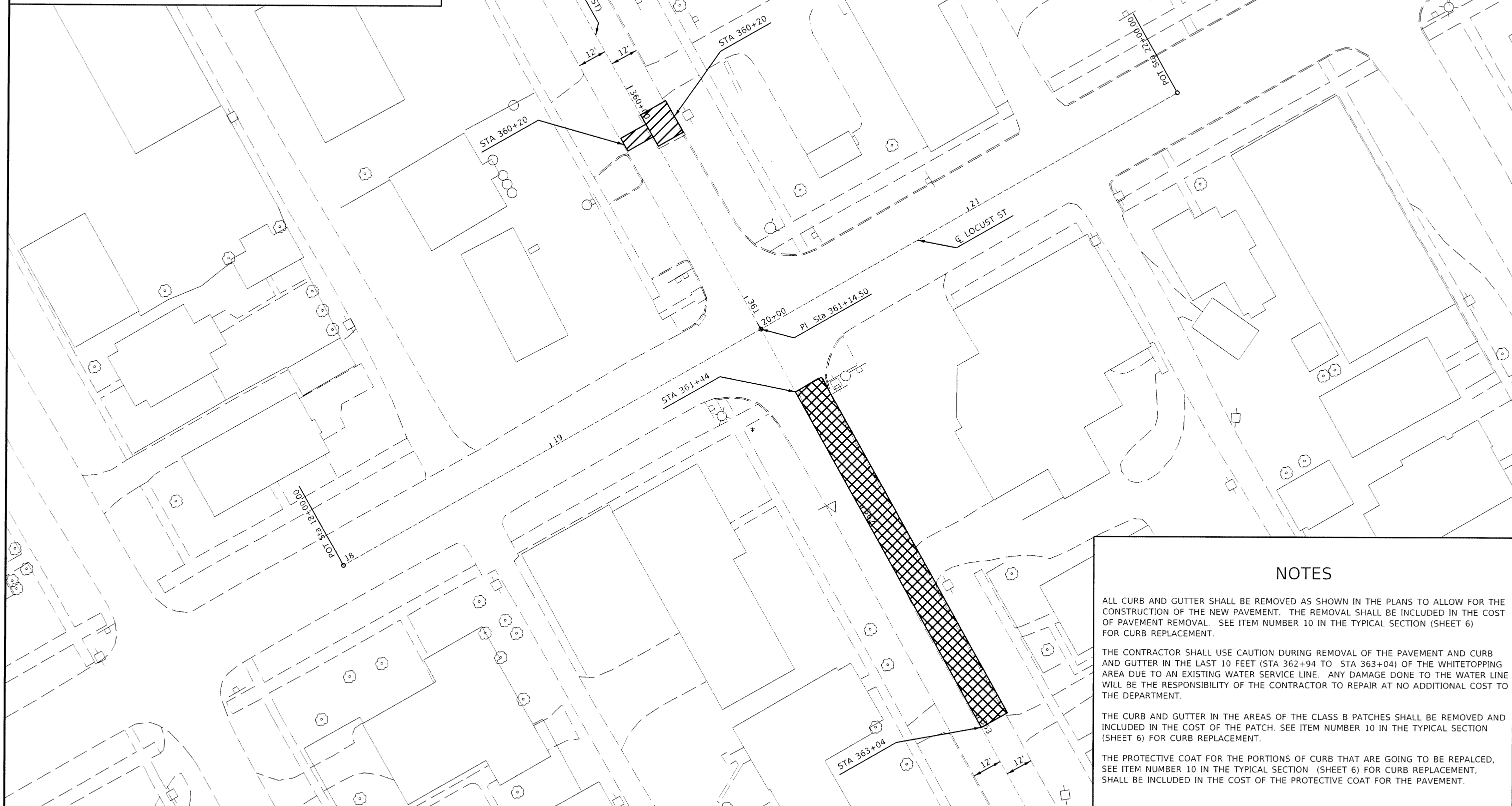




PAVEMENT REMOVAL  
SUBBASE GRANULAR MATERIAL, TYPE A 4"  
PORTLAND CEMENT CONCRETE PAVEMENT 11" (JOINTED)



CLASS B PATCHING  
REFER TO PATCHING SCHEDULE



### NOTES

ALL CURB AND GUTTER SHALL BE REMOVED AS SHOWN IN THE PLANS TO ALLOW FOR THE CONSTRUCTION OF THE NEW PAVEMENT. THE REMOVAL SHALL BE INCLUDED IN THE COST OF PAVEMENT REMOVAL. SEE ITEM NUMBER 10 IN THE TYPICAL SECTION (SHEET 6) FOR CURB REPLACEMENT.

THE CONTRACTOR SHALL USE CAUTION DURING REMOVAL OF THE PAVEMENT AND CURB AND GUTTER IN THE LAST 10 FEET (STA 362+94 TO STA 363+04) OF THE WHITETOPPING AREA DUE TO AN EXISTING WATER SERVICE LINE. ANY DAMAGE DONE TO THE WATER LINE WILL BE THE RESPONSIBILITY OF THE CONTRACTOR TO REPAIR AT NO ADDITIONAL COST TO THE DEPARTMENT.

THE CURB AND GUTTER IN THE AREAS OF THE CLASS B PATCHES SHALL BE REMOVED AND INCLUDED IN THE COST OF THE PATCH. SEE ITEM NUMBER 10 IN THE TYPICAL SECTION (SHEET 6) FOR CURB REPLACEMENT.

THE PROTECTIVE COAT FOR THE PORTIONS OF CURB THAT ARE GOING TO BE REPALED, SEE ITEM NUMBER 10 IN THE TYPICAL SECTION (SHEET 6) FOR CURB REPLACEMENT, SHALL BE INCLUDED IN THE COST OF THE PROTECTIVE COAT FOR THE PAVEMENT.

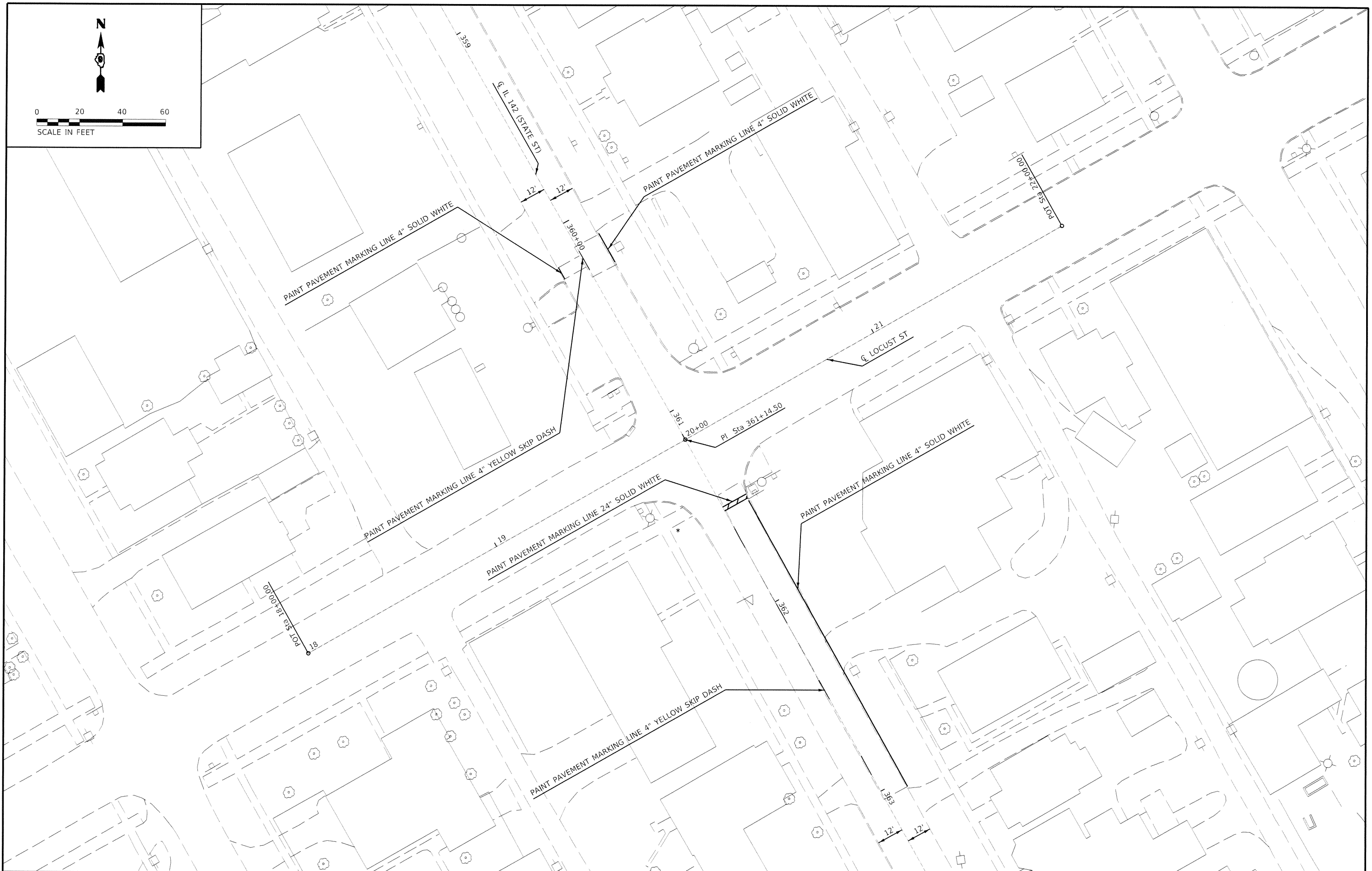
FILE NAME =	USER NAME = harpj	DESIGNED -	REVISED -
p:\IL084EBID\INTEC\Illinois.gov\PW\DOT\Documents\DOT Offices\District 9\Projects\78581\Drawings\CABsheets\0978581_sht.dgn		DRAWN -	REVISED -
#MODELNAME#	PLOT SCALE = 40.0000 1" = 40'	CHECKED -	REVISED -
	PLOT DATE = 7/10/2017	DATE -	REVISED -

**STATE OF ILLINOIS  
DEPARTMENT OF TRANSPORTATION**

**REMOVAL AND CONSTRUCTION SHEET**

SCALE: \_\_\_\_\_ SHEET \_\_\_\_\_ OF \_\_\_\_\_ SHEETS STA. \_\_\_\_\_ TO STA. \_\_\_\_\_

F.A.P. RTE.	SECTION	COUNTY	TOTAL SHEETS	SHEET NO.
776	D9 PAVEMENT REPAIR 2018-2	SALINE	10	9
CONTRACT NO. 78581				
ILLINOIS FED. AID PROJECT				



FILE NAME =  
 P:\IL084EBIDINTEG\Illinois.gov\PWIDOT\Documents\DOT Offices\District 9\Projects\78581\Drawings\CADsheets\0978581\_sht.dgn  
 #MODELNAME#

USER NAME = harpja  
 PLOT SCALE = 40.0000 1/1 in.  
 PLOT DATE = 7/10/2017

DESIGNED -  
 DRAWN -  
 CHECKED -  
 DATE -

REVISED -  
 REVISED -  
 REVISED -  
 REVISED -

**STATE OF ILLINOIS  
 DEPARTMENT OF TRANSPORTATION**

**PAVEMENT MARKING SHEET**

SCALE: \_\_\_\_\_ SHEET \_\_\_\_\_ OF \_\_\_\_\_ SHEETS STA. \_\_\_\_\_ TO STA. \_\_\_\_\_

F.A.P. RTE.	SECTION	COUNTY	TOTAL SHEETS	SHEET NO.
776	D9 PAVEMENT REPAIR 2018-2	SALINE	10	10
CONTRACT NO. 78581				
ILLINOIS FED. AID PROJECT				