

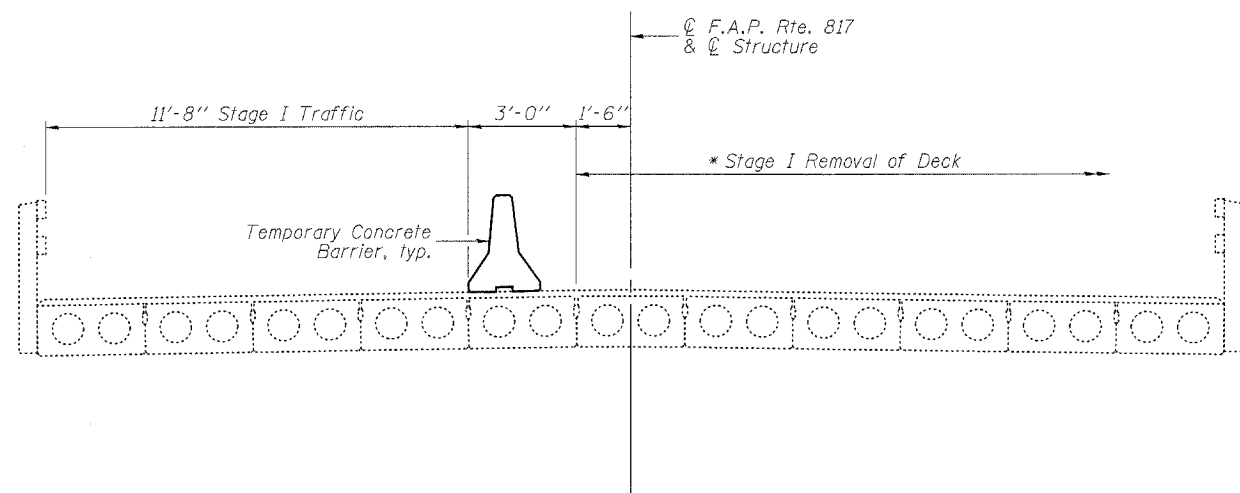
STATE OF ILLINOIS
DEPARTMENT OF TRANSPORTATION

ROUTE NO.	SECTION	COUNTY	TOTAL SHEETS	SHEET NO.
F.A.P. 817	8BR-2, 8BR-3	WASHINGTON	52	42
FED. ROAD DIST. NO. 7	ILLINOIS	FED. AID PROJECT-		

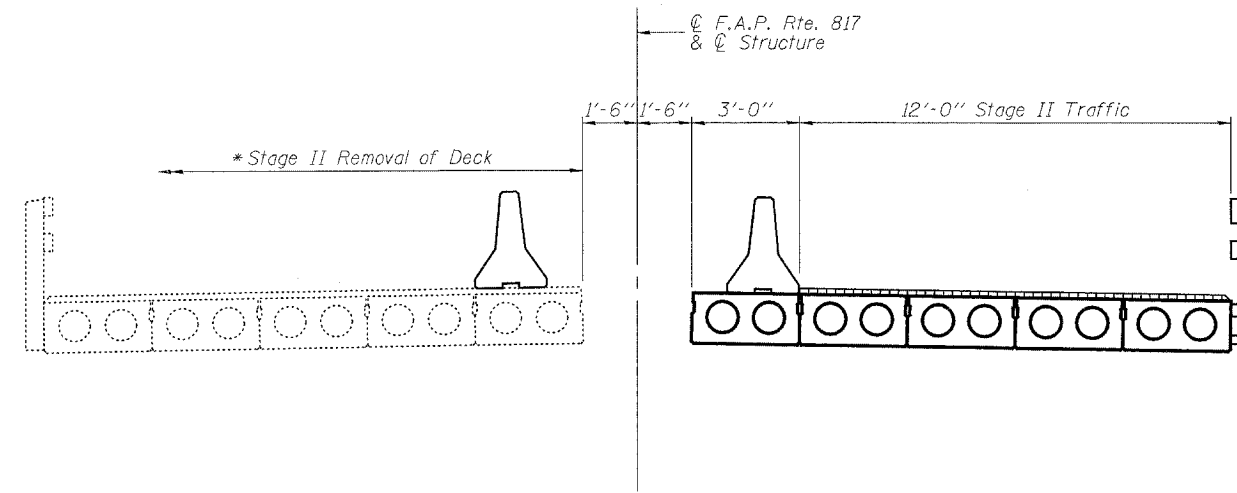
SHEET NO. 2

9 SHEETS

Contract #76946

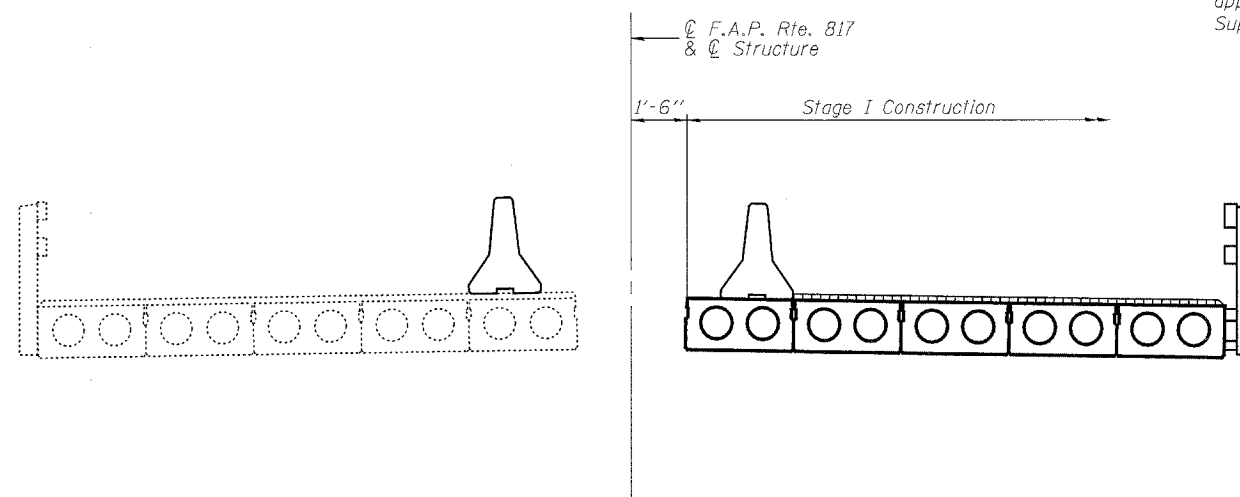


STAGE I REMOVAL

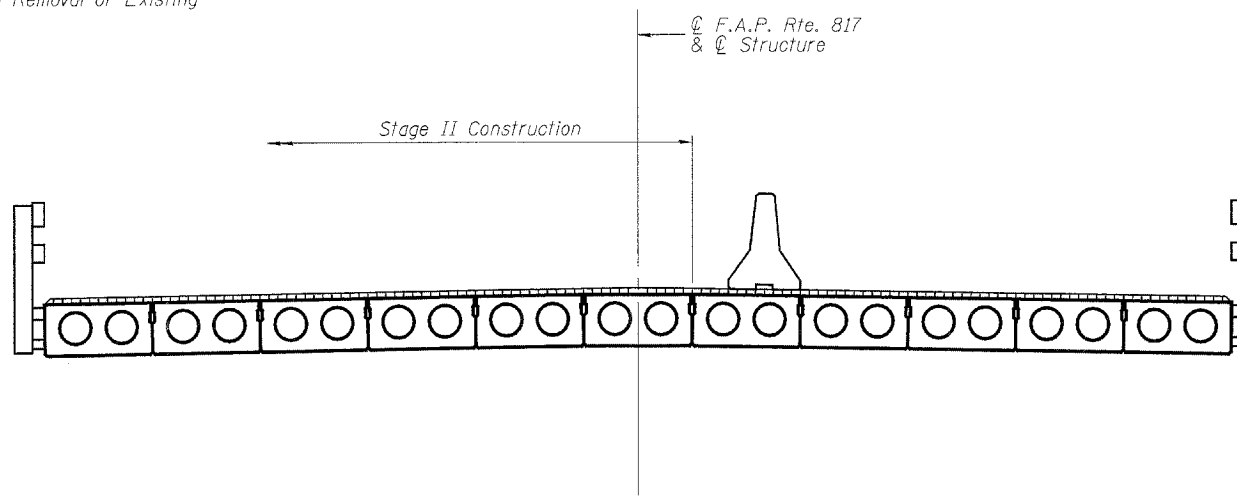


STAGE II REMOVAL

* The Contractor is required to brace the abutments at the beam seats longitudinally prior to the deck beam removal process. The braces shall stay in place until all new deck beams are doweled into position. This is to prevent the development of excessive stresses in the abutments during construction. Bracing details and computations are to be submitted to the Engineer for approval. The cost is included in Removal of Existing Superstructures.



STAGE I CONSTRUCTION



STAGE II CONSTRUCTION

Notes:
All sections are looking East.
For quantity of Temporary Concrete Barrier, see roadway plans.
For details of Temporary Concrete Barrier, see sheet 3 of 9.
For requirements for lapping waterproofing membrane, see notes on sheet 3 of 9.

DESIGNED	EML
CHECKED	NJM
DRAWN	EML
CHECKED	NJM

HORNER & SHIFRIN, INC.
ENGINEERS ■ ARCHITECTS ■ PLANNERS

STAGE CONSTRUCTION DETAILS
F.A.P. ROUTE 817 - SECTION 8BR-3
WASHINGTON COUNTY
STATION 36+12.71
STRUCTURE NO. 095-0011