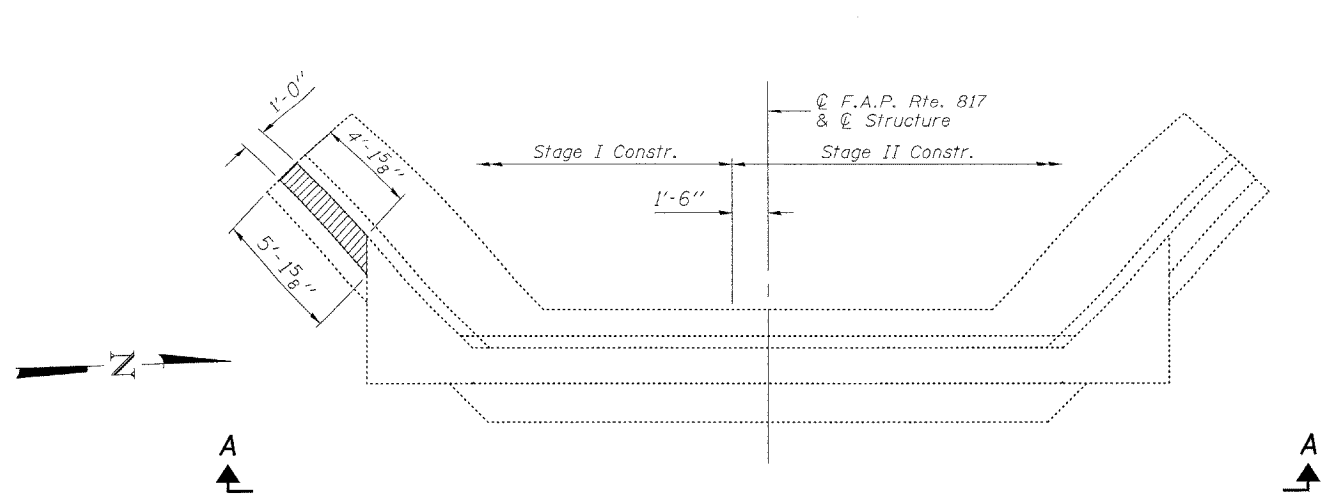


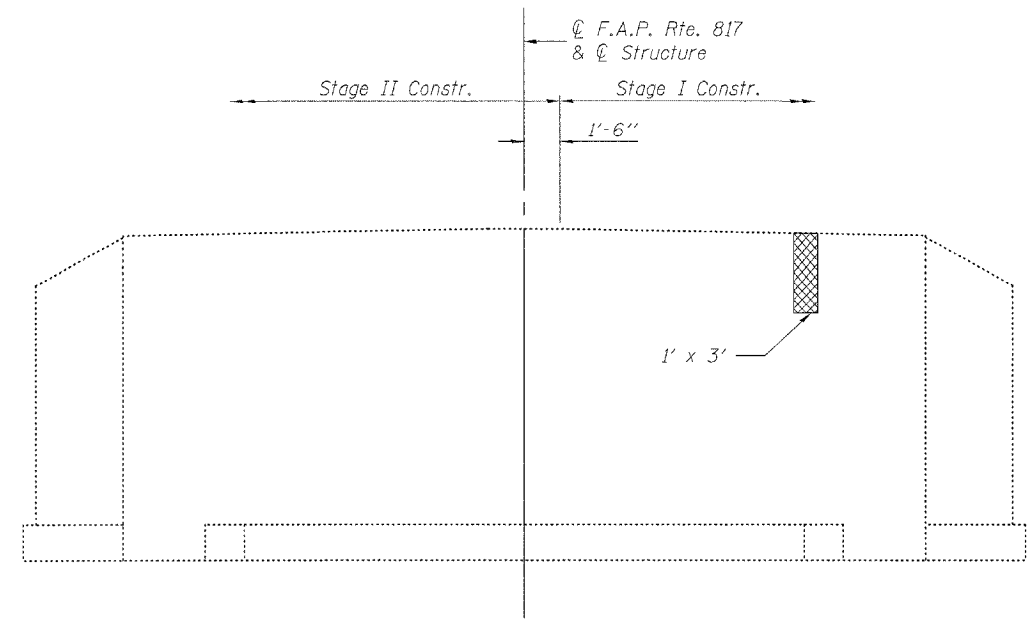
STATE OF ILLINOIS
DEPARTMENT OF TRANSPORTATION

ROUTE NO.	SECTION	COUNTY	TOTAL SHEETS	SHEET NO.	SHEET NO. 10 10 SHEETS
F.A.P. 817	8BR-2, 8BR-3	WASHINGTON	52	29	
FED. ROAD DIST. NO. 7	ILLINOIS	FED. AID PROJECT-			

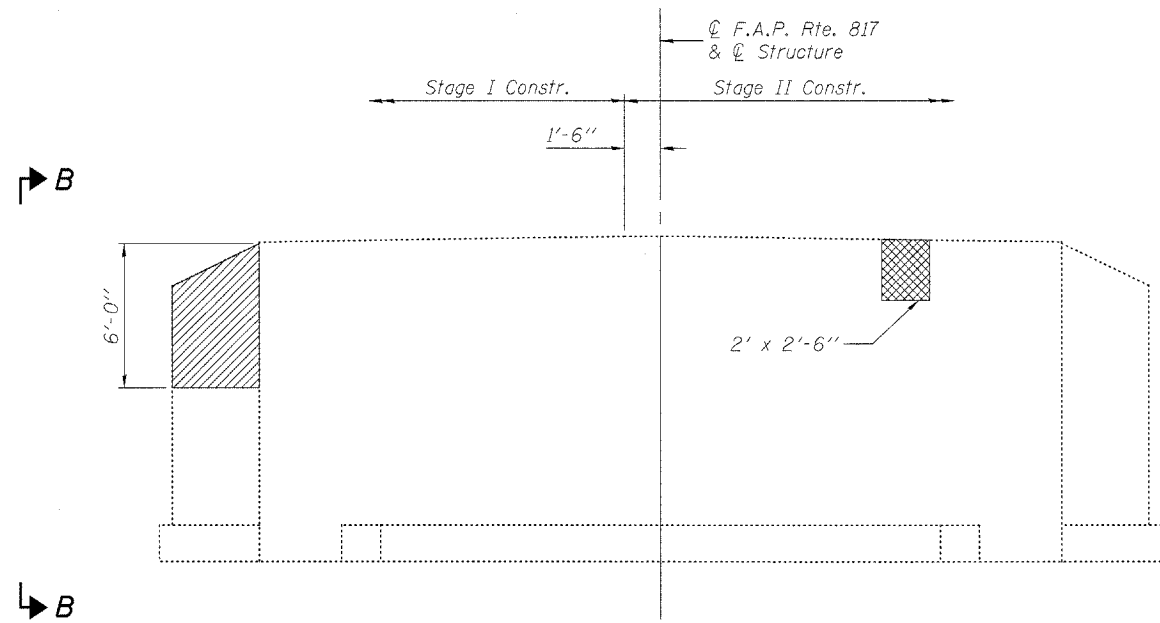
Contract #76946



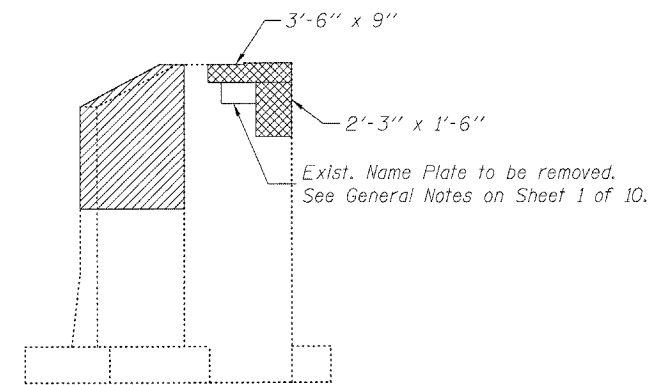
PLAN - WEST ABUTMENT



ELEVATION - EAST ABUTMENT
(Looking East)



VIEW A-A



VIEW B-B

BILL OF MATERIAL

Item	Unit	Total
Concrete Removal	Cu. Yd.	0.9
Structural Repair of Concrete (Depth Equal to or less than 5")	Sq. Ft.	14.0

Notes:
Concrete Removal and Structural Repair of Concrete shall occur during its respective stage construction.
See Special Provisions for Structural Repair of Concrete.

LEGEND

- Concrete Removal
- Structural Repair of Concrete

DESIGNED	EML
CHECKED	NJM
DRAWN	EML
CHECKED	NJM

HORNER & SHIFRIN, INC.
ENGINEERS ■ ARCHITECTS ■ PLANNERS

**ABUTMENT REPAIR AND
CONCRETE REMOVAL DETAILS**
F.A.P. ROUTE 817 - SECTION 8BR-2
WASHINGTON COUNTY
STATION 25+18.00
STRUCTURE NO. 095-0010