

F.A.P. SECTION	COUNTY	TOTAL SHEETS	SHEET NO.
774 (107Z) TSL-4	EFFINGHAM	13	4
FED. ROAD DIST. NO. ILLINOIS FED. AID PROJECT			

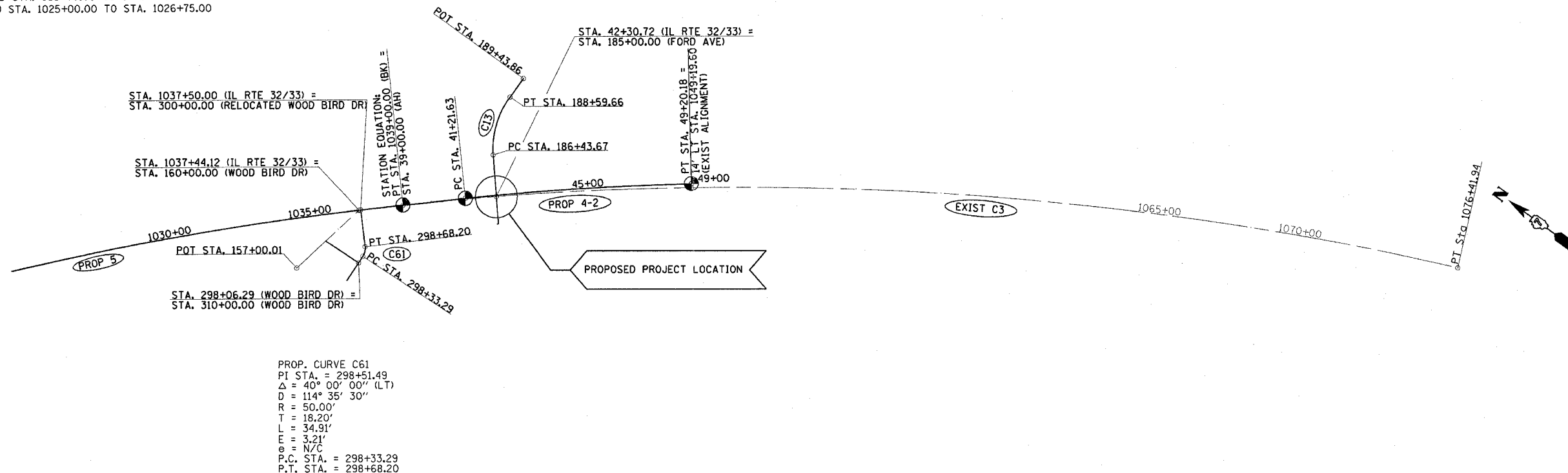
CONTRACT NO. 74133

PROP. CURVE PROP5
 PI STA. = 1014+09.68
 $\Delta = 25^\circ 19' 45''$ (RT)
 $D = 0^\circ 30' 00''$
 $R = 11,456.75'$
 $T = 2,574.44'$
 $L = 5,064.76'$
 $E = 285.69'$
 $e = 1.56\%$
 P.C. STA. = 988+35.24
 P.T. STA. = 1039+00.00
 SE ATTAINED STA. 985+70.00 TO STA. 989+00.00
 SE REMOVED STA. 1025+00.00 TO STA. 1026+75.00

EXIST. CURVE C13
 PI STA. = 187+56.58
 $\Delta = 41^\circ 14' 58''$ (RT)
 $D = 19^\circ 05' 55''$
 $R = 300.00'$
 $T = 112.91'$
 $L = 215.98'$
 $E = 20.54'$
 $e = \text{-----}$
 P.C. STA. = 186+43.67
 P.T. STA. = 188+59.66

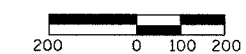
PROP. CURVE PROP4-2
 PI STA. = 45+21.11
 $\Delta = 4^\circ 27' 29''$ (RT)
 $D = 0^\circ 33' 30''$
 $R = 10,263.16'$
 $T = 399.48'$
 $L = 798.55'$
 $E = 7.77'$
 $e = \text{N/C}$
 P.C. STA. = 41+21.63
 P.T. STA. = 49+20.18

EXISTING CURVE C3
 P.I. STA. = 1034+69.01
 $\Delta = 44^\circ 02' 24''$ (RT)
 $D = 0^\circ 30' 00''$
 $R = 11,457.45'$
 $T = 4,633.77'$
 $L = 8,806.70'$
 $E = 901.55'$
 $e = 1.55\%$
 P.C. STA. = 988+35.24
 P.T. STA. = 1076+41.94



PROP. CURVE C61
 PI STA. = 298+51.49
 $\Delta = 40^\circ 00' 00''$ (LT)
 $D = 114^\circ 35' 30''$
 $R = 50.00'$
 $T = 18.20'$
 $L = 34.91'$
 $E = 3.21'$
 $e = \text{N/C}$
 P.C. STA. = 298+33.29
 P.T. STA. = 298+68.20

LEGEND
 ● DENOTES PERMANENT SURVEY MARKER PLACED DURING ROADWAY CONSTRUCTION.



REVISIONS	
NAME	DATE

ILLINOIS DEPARTMENT OF TRANSPORTATION
HORIZONTAL ALIGNMENT PLAN
 SCALE: 1"=200'
 DATE: 4/22/02
 DRAWN BY: NJV
 CHECKED BY: BKB