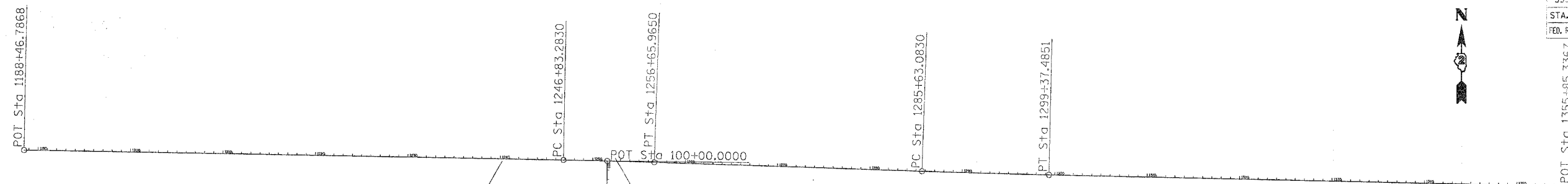


F.A.P. RTE.	SECTION	COUNTY	TOTAL SHEETS	SHEET NO.
589	(26-15D)M	ROCK ISLAND	116	2
STA.		TO STA.		
FED. ROAD DIST. NO.		ILLINOIS	FED. AID PROJECT	



Chain IL92 contains:
273 CUR 280 CUR 290 31

Beginning chain IL92 description

Point 273 N 1,740,448.9270 E 2,159,512.0644 Sta 1188+46.7868

Course from 273 to PC 280 91° 05' 50.1530" Dist 5,836.4962'

Curve Data

Curve 280

P.I. Station 1251+74.6335 N 1,740,327.7505 E 2,165,838.7508

Delta = 0° 52' 23.8939" (RT)

Degree = 0° 05' 19.9300"

Tangent = 491.3505'

Length = 982.6819'

Radius = 64,471.8638'

External = 1.8723'

Long Chord = 982.6724'

Mid. Ord. = 1.8722'

P.C. Station 1246+83.2830 N 1,740,337.1597 E 2,165,347.4904

P.T. Station 1256+65.9650 N 1,740,310.8549 E 2,166,329.8107

C.C. N 1,675,877.1183 E 2,164,112.8728

Course from PT 280 to PC 290 91° 58' 14.0469" Dist 2,897.1180'

Curve Data

Curve 290

P.I. Station 1292+50.2930 N 1,740,187.6037 E 2,169,912.0191

Delta = 0° 43' 01.9623" (LT)

Degree = 0° 03' 07.8608"

Tangent = 687.2101'

Length = 1,374.4022'

Radius = 109,796.6432'

External = 2.1506'

Long Chord = 1,374.3932'

Mid. Ord. = 2.1505'

P.C. Station 1285+63.0830 N 1,740,211.2342 E 2,169,225.2154

P.T. Station 1299+37.4851 N 1,740,172.5720 E 2,170,599.0647

C.C. N 1,849,942.9461 E 2,173,000.6970

Course from PT 290 to 31 91° 15' 12.0845" Dist 5,647.8516'

Point 31 N 1,740,049.0340 E 2,176,245.5650 Sta 1355+85.3367

Ending chain IL92 description

SURVEY WORK POINTS							
POINT	NORTH	EAST	ELEVATION	CHAIN	STATION	OFFSET	DESCRIPTION
100	1740273.2550	2165776.0200	563.9460	1192	1251+13.3229	54.2538' RT	SURVEY POINT, NAIL
101	1740332.6170	2164321.7790	576.5610	1192	1236+57.8467	24.1840' RT	SURVEY POINT, PIN
102	1740368.4900	2164942.4310	572.9350	1192	1242+77.6979	23.5677' LT	SURVEY POINT, PIN
103	1740157.3380	2167125.0770	562.2920	1192	1264+66.0398	126.0800' RT	SURVEY POINT, PIN

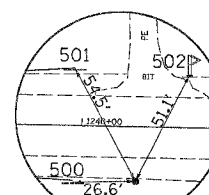
APPARENT PROPERTY CORNERS							
POINT	NORTH	EAST	ELEVATION	CHAIN	STATION	OFFSET	DESCRIPTION
700	1740359.3890	2165818.2870	563.6510	1192	1251+53.3315	32.9552' LT	PROPERTY CORNER, PIN
701	1740363.6600	2165663.0570	563.7850	1192	1249+98.1229	33.3075' LT	PROPERTY CORNER, PIN

BENCH MARKS							
POINT	NORTH	EAST	ELEVATION	CHAIN	STATION	OFFSET	DESCRIPTION
419	1740358.6260	2165781.0390	565.4130	1192	1251+16.1347	31.2184' LT	POWER POLE, RAILROAD SPIKE
1412	1740376.4720	2164486.5500	578.3520	1192	1238+21.7477	22.8183' LT	TOP OF WINGWALL, PLUG
1413	1740236.1610	2169180.6300	569.3920	1192	1285+17.6668	23.3789' LT	TOP OF WINGWALL, PLUG

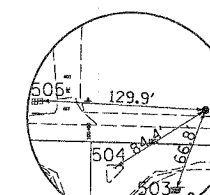
REFERENCE TIES							
POINT	CHAIN	STATION	OFFSET	DESCRIPTION			
500	1192	1239+96.5097	24.1787' RT	GUARDRAIL STEEL PLATE BEAM, END			
501	1192	1239+96.6160	24.3703' LT	GUARDRAIL STEEL PLATE BEAM, END			
502	1192	1240+45.3232	22.7897' LT	MAILBOX			
503	1192	1252+24.7290	35.5477' RT	POWER POLE, SHINER			
504	1192	1251+76.1112	19.6451' RT	ISLAND, CHISELED "X"			
505	1192	1251+16.1409	31.5227' LT	POWER POLE, SHINER			

HORIZONTAL CONTROL POINTS							
POINT	NORTH	EAST	ELEVATION	CHAIN	STATION	OFFSET	DESCRIPTION
18	1740326.5360	2164687.0070	577.2800	1192	1240+23.1242	23.2699' RT	GPS CONTROL POINT, PIN
19	1740351.7420	2165910.7730	564.1830	1192	1252+45.9474	27.8226' LT	GPS CONTROL POINT, PIN

CURVE POINT NUMBERS				
CURVE	PI	CC	PC	PT
280	280	281	282	283
290	290	291	292	293



HORIZONTAL CONTROL POINT No. 18



HORIZONTAL CONTROL POINT No. 19