

Contract #60A65

**BEAM 1**

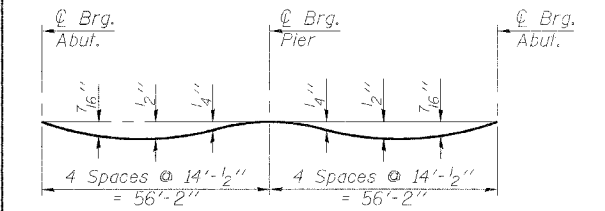
Location	Station	Offset	Theoretical Grade Elevations	Theoretical Grade Elevations Adjusted For Dead Load Deflections
Bk. W. Abut.	99+42.000	-34.125	611.190	611.190
☉ Brg. W. Abut.	99+43.833	-34.125	611.221	611.221
A	99+53.833	-34.125	611.370	611.399
B	99+63.833	-34.125	611.491	611.534
C	99+73.833	-34.125	611.584	611.625
D	99+83.833	-34.125	611.650	611.675
E	99+93.833	-34.125	611.688	611.695
☉ Pier	100+00.000	-34.125	611.698	611.698
F	100+10.000	-34.125	611.691	611.704
G	100+20.000	-34.125	611.656	611.688
H	100+30.000	-34.125	611.594	611.637
I	100+40.000	-34.125	611.504	611.543
J	100+50.000	-34.125	611.386	611.405
☉ Brg. E. Abut.	100+56.167	-34.125	611.300	611.300
Bk. E. Abut.	100+58.000	-34.125	611.265	611.265

**BEAM 2**

Location	Station	Offset	Theoretical Grade Elevations	Theoretical Grade Elevations Adjusted For Dead Load Deflections
Bk. W. Abut.	99+42.000	-26.542	611.304	611.304
☉ Brg. W. Abut.	99+43.833	-26.542	611.335	611.335
A	99+53.833	-26.542	611.484	611.512
B	99+63.833	-26.542	611.605	611.647
C	99+73.833	-26.542	611.698	611.738
D	99+83.833	-26.542	611.764	611.789
E	99+93.833	-26.542	611.802	611.809
☉ Pier	100+00.000	-26.542	611.811	611.811
F	100+10.000	-26.542	611.805	611.818
G	100+20.000	-26.542	611.770	611.802
H	100+30.000	-26.542	611.708	611.751
I	100+40.000	-26.542	611.618	611.657
J	100+50.000	-26.542	611.500	611.519
☉ Brg. E. Abut.	100+56.167	-26.542	611.414	611.414
Bk. E. Abut.	100+58.000	-26.542	611.379	611.379

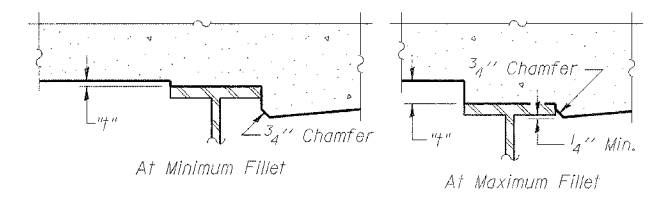
**BEAM 3**

Location	Station	Offset	Theoretical Grade Elevations	Theoretical Grade Elevations Adjusted For Dead Load Deflections
Bk. W. Abut.	99+42.000	-18.958	611.417	611.417
☉ Brg. W. Abut.	99+43.833	-18.958	611.449	611.449
A	99+53.833	-18.958	611.598	611.626
B	99+63.833	-18.958	611.719	611.761
C	99+73.833	-18.958	611.812	611.852
D	99+83.833	-18.958	611.878	611.903
E	99+93.833	-18.958	611.916	611.923
☉ Pier	100+00.000	-18.958	611.925	611.925
F	100+10.000	-18.958	611.918	611.932
G	100+20.000	-18.958	611.884	611.916
H	100+30.000	-18.958	611.822	611.864
I	100+40.000	-18.958	611.732	611.771
J	100+50.000	-18.958	611.614	611.633
☉ Brg. E. Abut.	100+56.167	-18.958	611.527	611.527
Bk. E. Abut.	100+58.000	-18.958	611.493	611.493



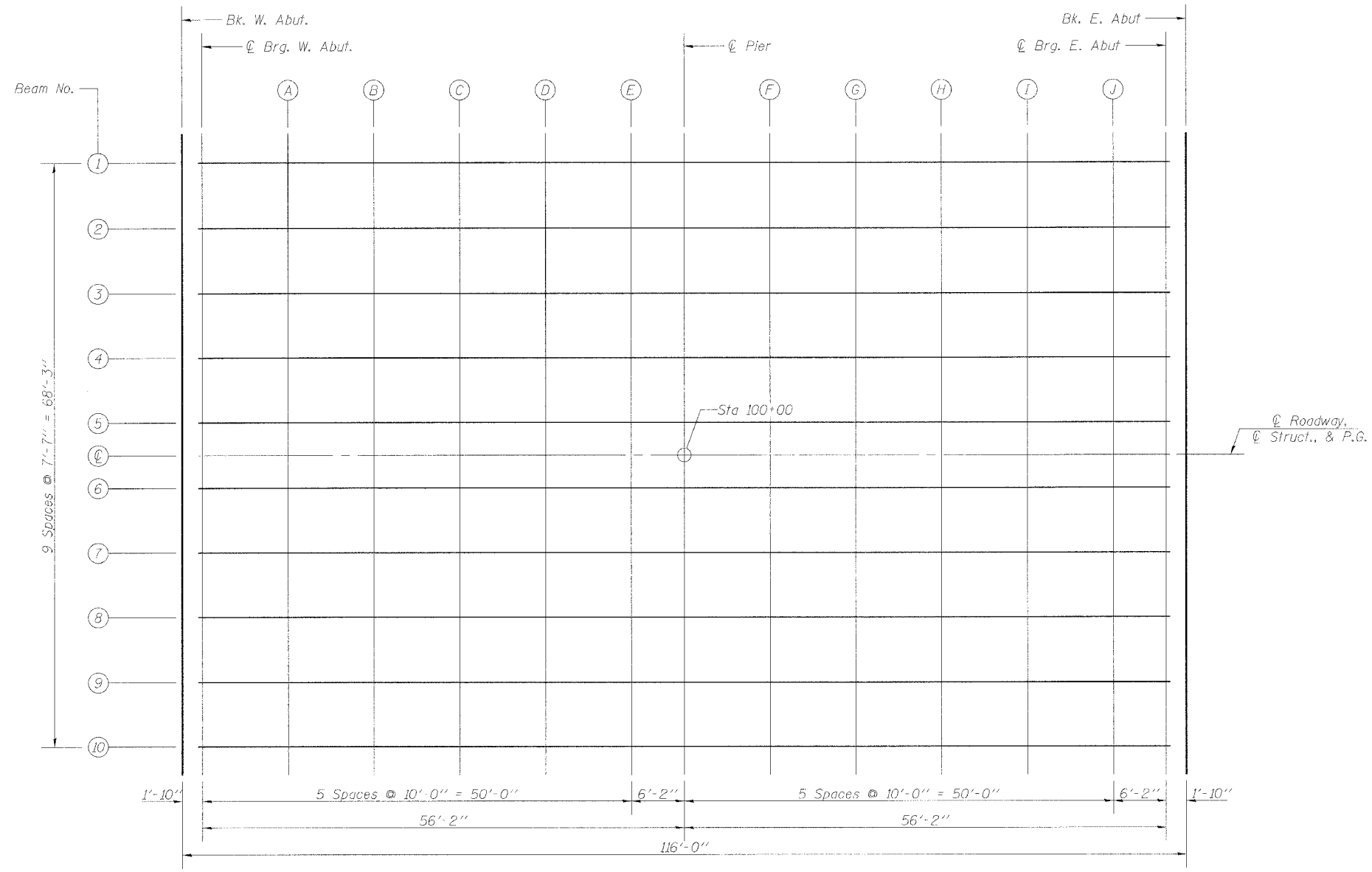
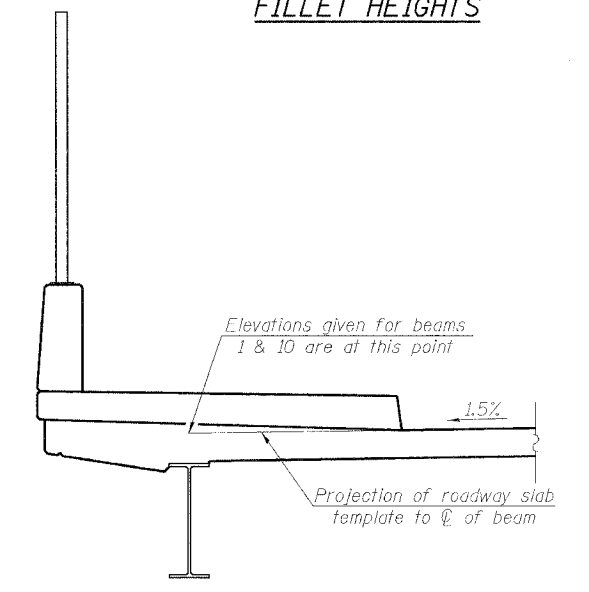
**DEAD LOAD DEFLECTION DIAGRAM**  
(Includes weight of concrete only.)

Note:  
The above deflections are not to be used in the field if the engineer is working from the grade elevations adjusted for dead load deflections as shown above and on Sheet 4 of 26.



To determine "h": After all structural steel has been erected, elevations of the top flanges of the beams shall be taken at intervals shown below. These elevations subtracted from the "Theoretical Grade Elevations Adjusted For Dead Load Deflection" shown, minus slab thickness, equals the fillet heights "h" above top flange of beams.

**FILLET HEIGHTS**



**PLAN**

<p>Excellence through Ownership</p> <p>200 West Front Street Wheaton, IL 60187</p>	<p>ILLINOIS DEPARTMENT OF TRANSPORTATION</p> <p>DECK ELEVATIONS - I FOSTER AVE. OVER I-94 (EDENS EXPRESSWAY) FAU RTE 1360 - SECTION 0101BR-2 COOK COUNTY STATION 100+00 STRUCTURE NO. 016-0246</p>
	<p>DATE: 4/30/2006</p> <p>DRAWN BY LCM CHECKED BY BLB</p>