

STATE OF ILLINOIS
DEPARTMENT OF TRANSPORTATION

F.A. RTE.	SECTION	COUNTY	TOTAL SHEETS	SHEET NO.
VAR.	2018-009-GR	VARIOUS	13	1
FED. ROAD DIST. NO. 1	ILLINOIS	CONTRACT NO. 62G82		

FOR INDEX OF SHEETS, SEE SHEET NO. 2

PROPOSED HIGHWAY PLANS

VARIOUS ROUTES (I-55, I-57, I-80 & IL 394)
AT VARIOUS EXPRESSWAY MEDIANS
SECTION: 2018-009-GR
HIGH TENSION CABLE BARRIER REPAIR
VARIOUS COUNTIES
C-91-266-18

SEE LOCATION MAP
SHEET 4

J.U.L.I.E.
JOINT UTILITY LOCATION INFORMATION FOR EXCAVATION
1-800-892-0123
OR 811

PROJECT ENGINEER: J. ALAIN MIDY (847) 221-3056
PROJECT MANAGER: FAWAD AQUEEL (847) 705-4247

CONTRACT NO. 62G82



STATE OF ILLINOIS
DEPARTMENT OF TRANSPORTATION

SUBMITTED June 28, 2018
Anthony J. Ramirez / AS
REGIONAL ENGINEER

Aug 17, 2018
Paul P. Chy
ENGINEER OF DESIGN AND ENVIRONMENT

Aug 17, 2018
Paul P. Chy
DIRECTOR OF HIGHWAYS PROJECT IMPLEMENTATION

PRINTED BY THE AUTHORITY
OF THE STATE OF ILLINOIS

INDEX OF SHEETS

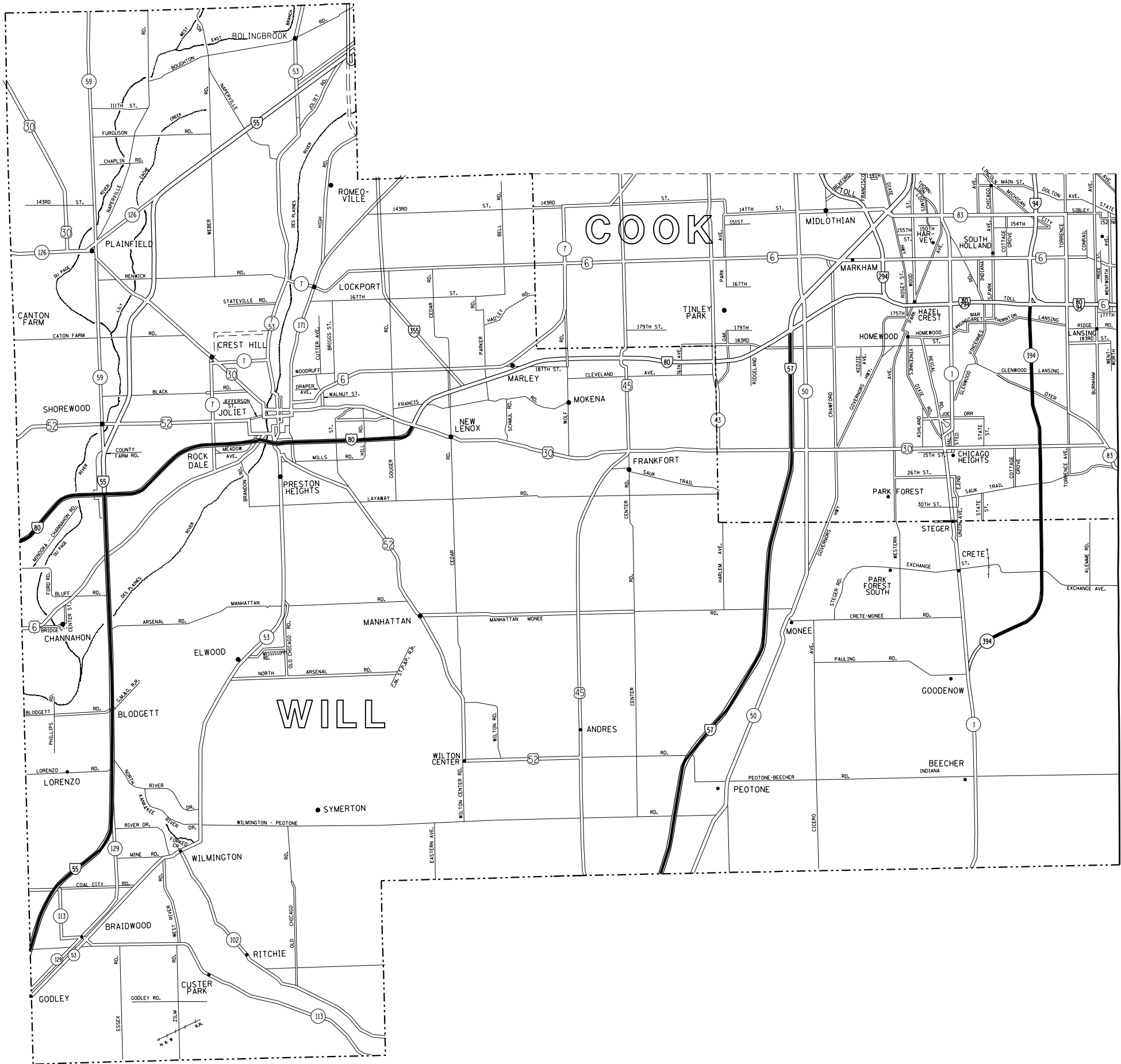
STATE STANDARDS

GENERAL NOTES

SHEET NO.	DESCRIPTION	STANDARD NO.	DESCRIPTION	
		635001-02	DELINEATORS	BEFORE STARTING ANY EXCAVATION, THE CONTRACTOR SHALL CALL “J.U.L.I.E.” AT (800) 892-0123 OR 811 FOR FIELD LOCATIONS OF BURIED ELECTRIC, TELEPHONE AND GAS UTILITIES. 48 HOUR NOTIFICATION IS REQUIRED.
1	COVER SHEET	701101-05	OFF-ROAD OPERATIONS, MULTILANE, 15’ TO 24’’ FROM PAVEMENT EDGE	THE CONTRACTOR SHALL COORDINATE CONSTRUCTION ACTIVITIES WITH UTILITY COMPANIES.
2	INDEX OF SHEETS, STANDARDS AND GENERAL NOTES	701106-02	OFF-ROAD OPERATIONS, MULTILANE, > 15’ AWAY	THE CONTRACTOR WILL NOT BE ALLOWED TO SET UP A YARD OR FIELD OFFICE ON STATE PROPERTY WITHOUT WRITTEN PERMISSION FROM THE DEPARTMENT.
3	SUMMARY OF QUANTITIES	701400-09	APPROACH TO LANE CLOSURE, FREEWAY/EXPRESSWAY	THE CONTRACTOR SHALL CALL STATE ELECTRICAL CONTRACTOR AT (773) 287-7600 TO LOCATE STATE OWNED FACILITIES.
4	LOCATION MAP	701401-11	LANE CLOSURE, FREEWAY/EXPRESSWAY	THE CONTRACTOR SHALL WORK IN THE DIRECTION OF TRAFFIC.
5-6	HIGH TENSION GUARDRAIL DETAILS (BRIFEN USA)	701411-09	LANE CLOSURE, MULTILANE, AT ENTRANCE OR EXIT RAMP FOR SPEEDS ≥ 45 MPH	THE CONTRACTOR WILL NOT BE ALLOWED TO STORE MATERIALS OVERNIGHT IN THE MEDIAN.
7	HIGH TENSION GUARDRAIL DETAILS (GIBLARTAR)			THE PROPOSED DEPTH OF THE CONCRETE SOCKETED FOUNDATIONS SHALL BE 42’’ (MINIMUM).
8	HIGH TENSION GUARDRAIL DETAILS (TRINITY)	701421-08	LANE CLOSURE, MULTILANE, DAY OPERATIONS ONLY, FOR SPEEDS ≥ 45 MPH TO 55 MPH	STANDARDS 701400 & 701401 SHALL BE USED FOR ALL LANE CLOSURES EXCEPT ON IL 394 SOUTH OF SAUK TRAIL, WHERE STANDARD 701421 SHALL BE USED.
9	ENTRANCE RAMP AND CLOSURE DETAILS (TC-08)	701426-09	LANE CLOSURE, MULTILANE, INTERMITTENT OR MOVING OPERATIONS, FOR SPEEDS ≥ 45 MPH	CONTRACTOR SHALL REGISTER, SUBMIT AND GAIN THE APPROVAL FOR ALL DAILY LANE CLOSURE REQUESTS VIA WWW.IDOTLCS.COM AT LEAST 24 HOURS IN ADVANCE OF ALL WORK.
10	TRAFFIC CONTROL AND PROTECTION FOR SIDE ROADS, INTERSECTIONS AND DRIVEWAYS (TC-10)	701428-01	TRAFFIC CONTROL SETUP AND REMOVAL FREEWAY/EXPRESSWAY	THE CONTRACTOR SHALL NOTIFY THE ILLINOIS DEPARTMENT OF TRANSPORTATION, EXPRESSWAY TRAFFIC CONTROL SUPERVISOR (847-705-4151) 72 HOURS IN ADVANCE OF ALL WORK ON THE INTERSTATE.
11	TRAFFIC CONTROL AND PROTECTION AT TURN BAYS (TO REMAIN OPEN TO TRAFFIC) (TC-14)	701901-07	TRAFFIC CONTROL DEVICES	
12	HIGHWAY TRAFFIC CONTROL FOR FREEWAY SHOULDER CLOSURES AND PARTIAL RAMP CLOSURES (TC-17)			
13	SIGNING FOR FLAGGING OPERATIONS AT WORK ZONE OPENINGS (TC-18)			

FILE NAME =	USER NAME = pyrzezowski, b	DESIGNED -	REVISED -	STATE OF ILLINOIS DEPARTMENT OF TRANSPORTATION	CABLE BARRIER REPAIR AT VARIOUS EXPRESSWAY MEDIANS INDEX OF SHEETS, STATE STANDARDS & GENERAL NOTES	F.A. RTE.	SECTION	COUNTY	TOTAL SHEETS	SHEET NO.
p:\1\11084EBID\INTEG\Illinois.gov\PIWIDOT\Documents\IDOT Offices\District 1\Projects\DI34318\Drawings\Design\DI34318-sht-plen.dgn		CHECKED -	REVISED -			VAR.	2018-009-GR	VARIOUS	13	2
	PLOT SCALE = 100.0000' / in.	DATE -	REVISED -		SCALE:	SHEET NO.	OF	SHEETS	STA.	TO STA.
	PLOT DATE = 6/22/2018									
						FED. ROAD DIST. NO. 1	ILLINOIS	FED. AID PROJECT	CONTRACT NO. 62082	

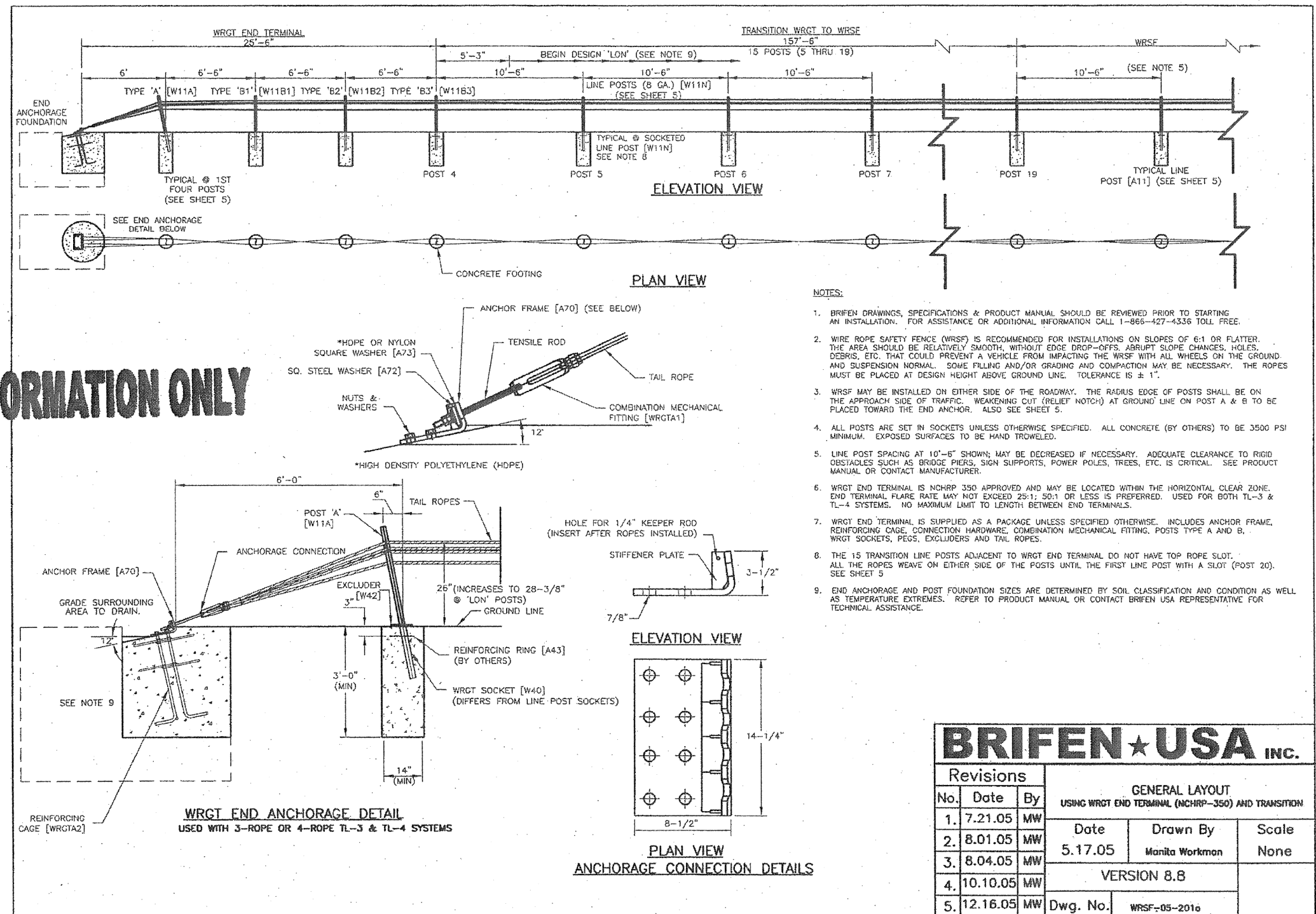
[illegible]



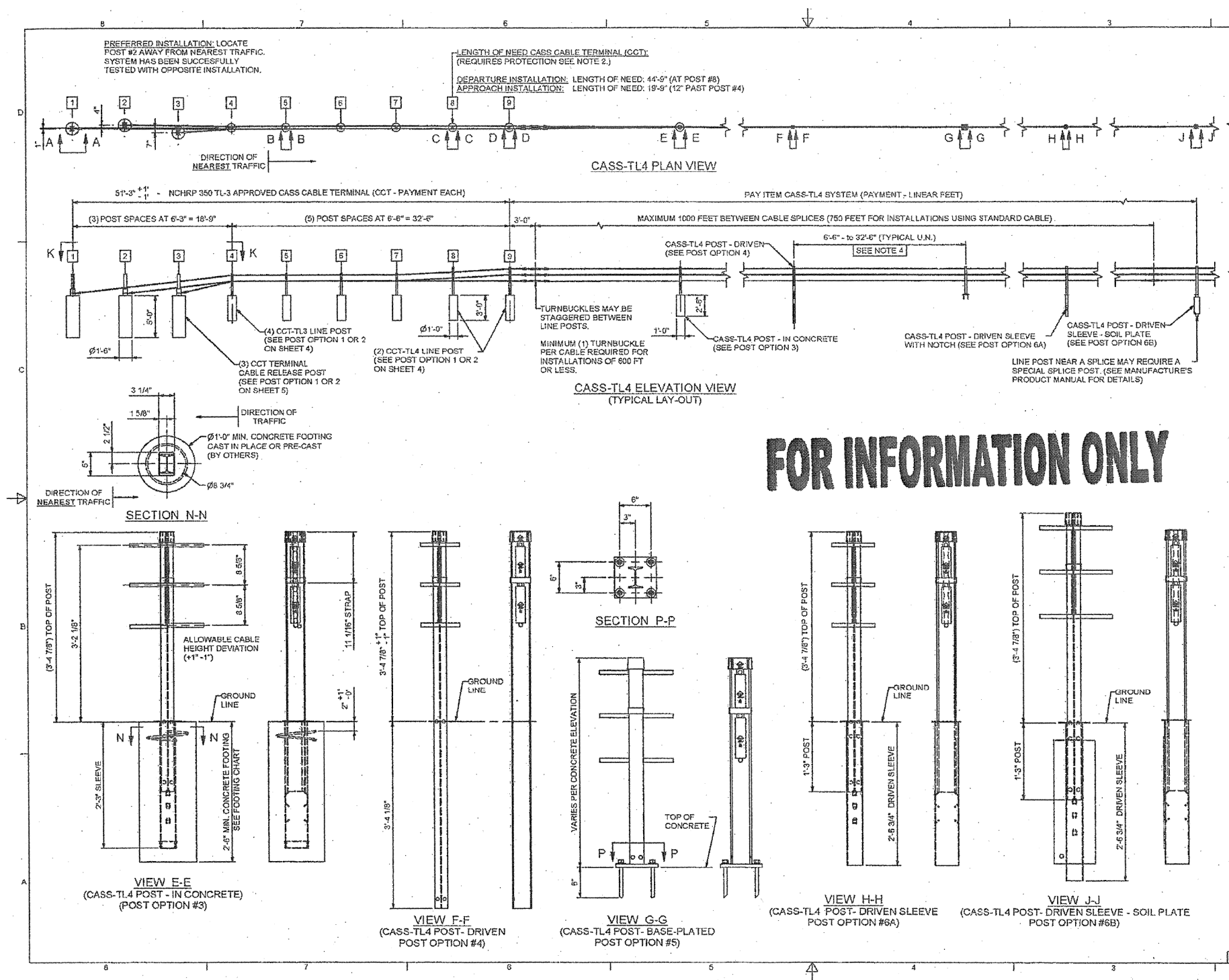
LEGEND

- STATE HIGHWAYS & EXPRESSWAYS WITH EXISTING HIGH TENSION BARRIERS.**
- STATE HIGHWAYS & EXPRESSWAYS WITHIN STATE JURIDICITION. (EXCEPT TOLLWAYS)**
- VARIOUS AGENCIES HIGHWAYS**

FOR INFORMATION ONLY



BRIFEN★USA INC.				
Revisions			GENERAL LAYOUT	
No.	Date	By	USING WRGT END TERMINAL (NCHRP-350) AND TRANSITION	
1.	7.21.05	MW	Date	Drawn By
2.	8.01.05	MW	5.17.05	Manita Workman
3.	8.04.05	MW	VERSION 8.8	
4.	10.10.05	MW		
5.	12.16.05	MW	Dwg. No.	WRSF-05-2016



FOR INFORMATION ONLY

- NOTES:**
1. CASS-TL4 HAS BEEN SUCCESSFULLY TESTED TO NATIONAL COOPERATIVE HIGHWAY RESEARCH PROGRAM REPORT 350 TEST LEVEL 4 (NCHRP 350 TL4) AND ACCEPTED BY FHWA FOR VARIOUS POST SPACINGS. CASS CABLE TERMINAL (CCT) HAS BEEN SUCCESSFULLY TESTED AND APPROVED TO NCHRP TL3.
 2. AN NCHRP 350 TL3 APPROVED TERMINAL (CCT) OR CASS-TL4 TRANSITION (VARIOUS) SHALL BE USED ON APPROACH AND DEPARTURE TERMINATIONS WHEN CASS-TL4 IS INSTALLED ON THE NATIONAL HIGHWAY SYSTEM (NHS). IF THE TERMINATION POINT IS LOCATED OUTSIDE THE CLEAR ZONE AND/OR PROTECTED BY OTHER MEANS (CRASHWORTHY BARRIER, TERMINALS, ETC.), A NON-NCHRP 350 TL3 ANCHOR (CCA) MAY BE USED ON APPROACH AND DEPARTURE TERMINATIONS.
 3. CASS-TL4 SHALL BE INSTALLED ON SHOULDERS OR MEDIANS WITH SLOPES OF 6:1 OR FLATTER WITHOUT OBSTRUCTIONS, DEPRESSIONS, ETC. THAT MAY SIGNIFICANTLY AFFECT THE STABILITY OF AN ERRANT VEHICLE. GRADING OF SITE AND/OR APPROPRIATE FILL MATERIALS MAY BE REQUIRED. THE DESIGNER/INSTALLER SHALL "FLATTEN" OR "ROUND" VARIOUS TOPOGRAPHICAL INCONSISTENCIES THAT COULD INTERFERE WITH THE ABILITY OF THE INSTALLER TO CONSISTENTLY MAINTAIN THE DESIGN HEIGHT (IN RELATION TO THE TERRAIN) OF THE CABLES. PLEASE CONSULT THE CASS MANUAL(S) FOR INSTALLATIONS IN "DITCH SECTIONS".
 4. CASS-TL4 POST SPACING MAY BE MODIFIED TO AVOID OBSTACLES THAT CONFLICT WITH THE INSTALLATION OF CASS-TL4 LINE POSTS. NO POST SPACE CAN EXCEED THE MAXIMUM POST SPACE LIMIT OF 32'-0". OR MAXIMUM POST SPACING ALLOWED BY PROJECT ENGINEER - WHICHEVER IS LESS. REDUCING OR INCREASING POST SPACING AFFECTS DEFLECTION. CASS-TL4 MAY BE LATERSALLY TRANSFERRED AT A RATE NOT TO EXCEED 30:1.
 5. POST FOUNDATIONS MAY BE DRILLED THROUGH EXISTING PAVEMENT. TRINITY MAY ALLOW THE USE OF ALTERNATE LINE POST FOOTINGS IF SYSTEM IS INSTALLED WITH AN ACCEPTABLE MOWSTRIP APPLICATION - PLEASE CONTACT TRINITY.
 6. FOR AESTHETIC PURPOSES TRINITY RECOMMENDS ALL SLEEVES, DRIVEN POSTS, AND LOWER CABLE RELEASE POSTS TO BE INSTALLED REASONABLY PLUMB (APPROXIMATELY 1/8" PER FOOT).
 7. ALL CONCRETE SHALL HAVE A MINIMUM COMPRESSIVE STRENGTH OF 3,000 P.S.I. PRIOR TO TENSIONING THE SYSTEM. TRINITY RECOMMENDS THE CONCRETE TO BE VIBRATED IN ACCORDANCE WITH THE LATEST APPLICABLE AGENCY SPECIFICATION.
 8. CASS-TL4 SHALL BE INSTALLED IN WELL-DRAINED, COMPACTED, NCHRP REPORT 350 STANDARD SOILS. IF SOIL DOESN'T MEET THIS CLASSIFICATION, IF SOLID ROCK/CONCRETE IS ENCOUNTERED BELOW GRADE OR IF SOIL IS SUSCEPTIBLE TO SEVERE FREEZE/THAW CYCLES, PLEASE CONTACT TRINITY ABOUT ALTERNATE FOOTING DESIGNS. TRINITY SUGGESTS THE USE OF "MOW STRIPS" FOR EROSION PREVENTION AND EASE OF MAINTENANCE / INSTALLATION.
 9. PLEASE SEE SPECIFYING AGENCY (OR MUTCD) FOR PROPER "BARRIER" DELINEATION.
 10. PLEASE CONTACT TRINITY OR CONSULT THE DESIGN, INSTALLATION, OR REPAIR MANUAL(S) FOR ADDITIONAL INFORMATION.
- TRINITY HIGHWAY PRODUCTS, LLC. EMAIL:**
2525 STEMMONS FREEWAY PRODUCTINFO@TRIN.NET
DALLAS, TX 75207 PHONE: (800) 644-7976

MOW STRIP DETAIL*			CONCRETE FOOTING CHART		
MOW STRIP	DEPTH	WIDTH	FOOTING	TUBE SLEEVE	REBAR RING
NONE			30" MIN.	27" MIN.	YES
HMA	6" MIN.	3" MIN.	27" MIN.	15" MIN.	NO
HMA	8" MIN.	3" MIN.	24" MIN.	15" MIN.	NO
RC	3" MIN.	3" MIN.	24" MIN.	15" MIN.	NO

CHART DOES NOT APPLY TO TERMINAL POSTS 1 THRU 8

* MOW STRIP OR PAVEMENT

HMA = HOT MIX ASPHALT (NOT RECYCLED ASPHALT PAVEMENT)

RC = REINFORCED CONCRETE (3,000 P.S.I. MINIMUM)

No.	CASS-TL4 POST OPTIONS
1	CCT - TERMINAL POST 1 - 9' IN CONCRETE
2	CCT - TERMINAL POST 1 - 9' WITH SOIL PLATE
3	CASS-TL4 POST - IN CONCRETE
4	CASS-TL4 POST - DRIVEN
5	CASS-TL4 POST - BASE-PLATED
6	CASS-TL4 POST - IN DRIVEN SLEEVE
	6A - DRIVEN SLEEVE - WITH NOTCH
	6B - DRIVEN SLEEVE - WITH SOIL PLATE

CASS-TL4

3-CABLE GUARDRAIL

SAFETY SYSTEM

TRINITY HIGHWAY PRODUCTS, LLC

GALV SPEC:

SHIPPING WT:

DRW: E.A.S. 4/11/2008

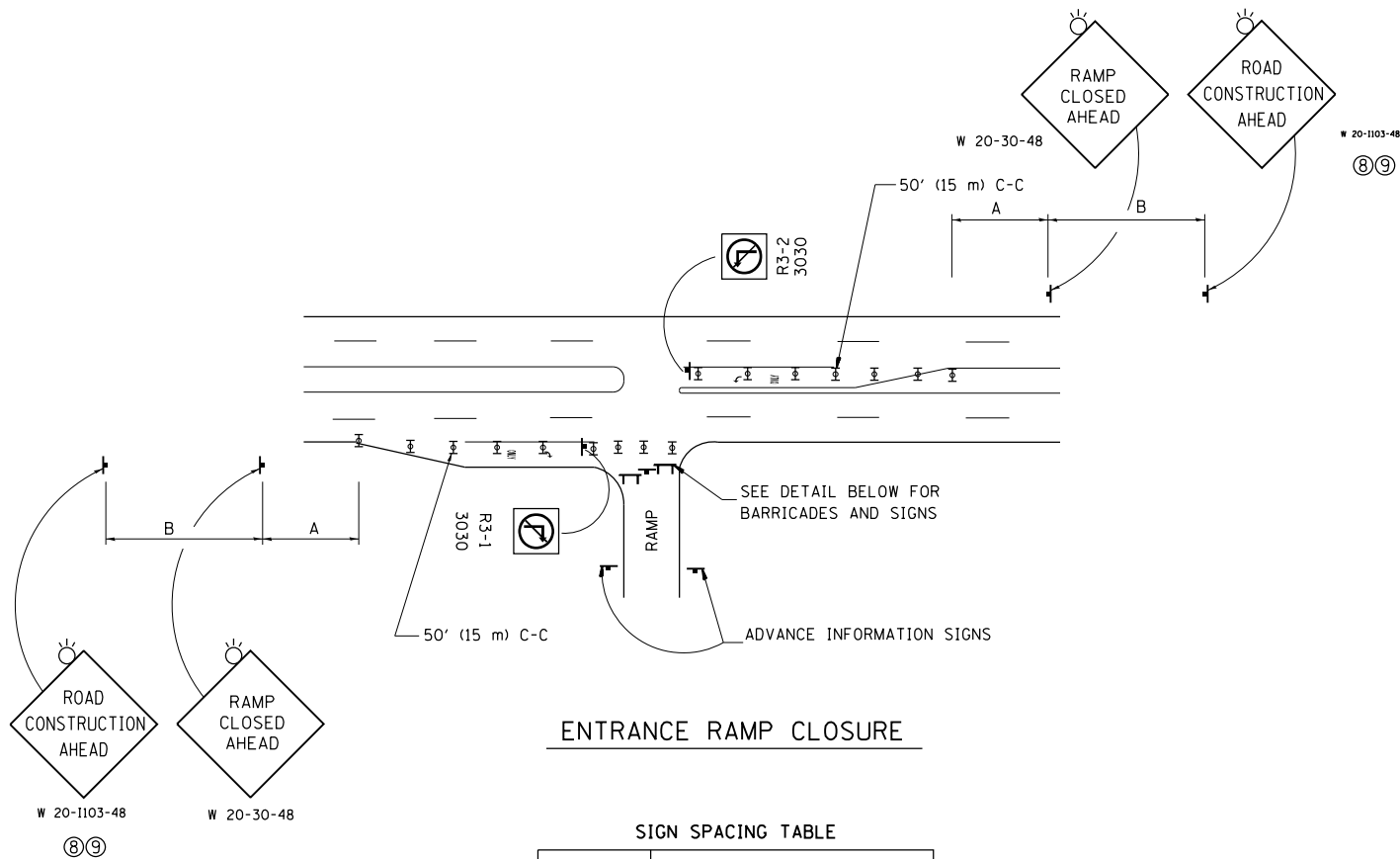
CHK: G.N. 4/11/2008

SHT: 1 OF 5

SIZE: D

DWG NO: SS-740

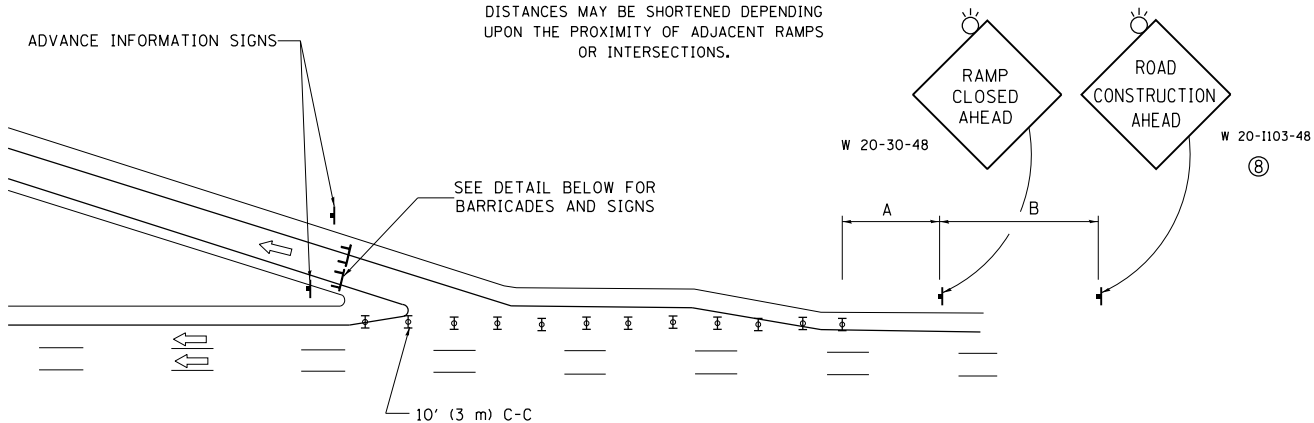
REV: 3



ENTRANCE RAMP CLOSURE

FACILITY	DISTANCE BETWEEN SIGNS	
	A	B
EXPRESSWAY >24 HOURS	1000' (300 m)	1500' (450 m)
EXPRESSWAY <24 HOURS	500' (150 m)	500' (150 m)
ARTERIAL 55 MPH	500' (150 m)	500' (150 m)
ARTERIAL 50-45 MPH	350' (100 m)	350' (100 m)
ARTERIAL <45 MPH	200' (60 m)	200' (60 m)

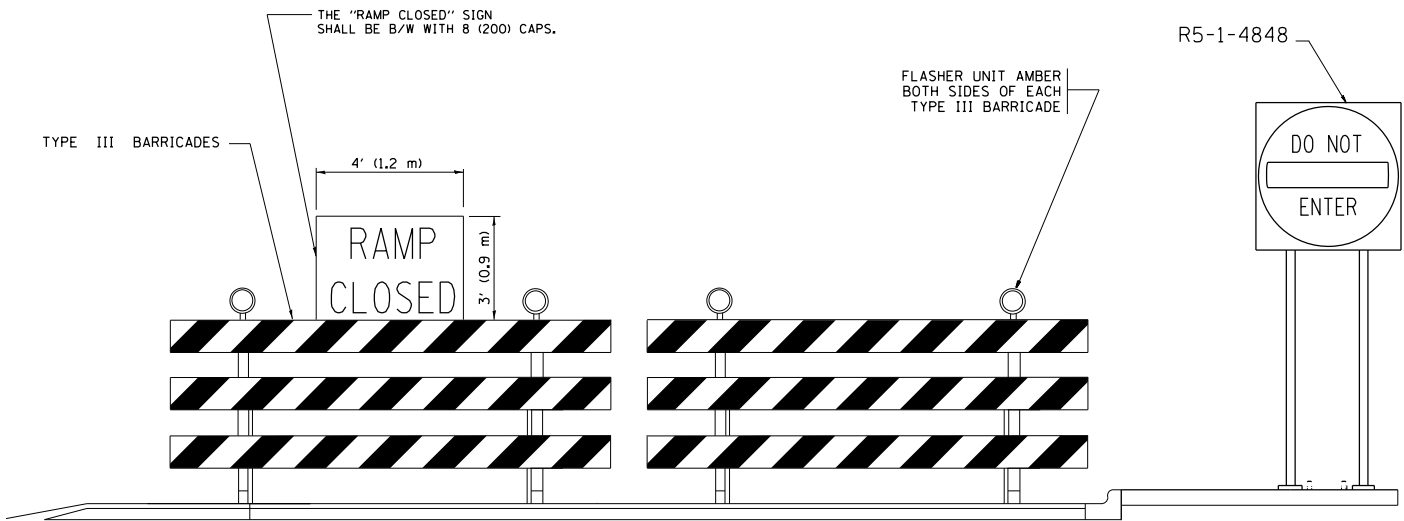
DISTANCES MAY BE SHORTENED DEPENDING UPON THE PROXIMITY OF ADJACENT RAMPS OR INTERSECTIONS.



EXIT RAMP CLOSURE

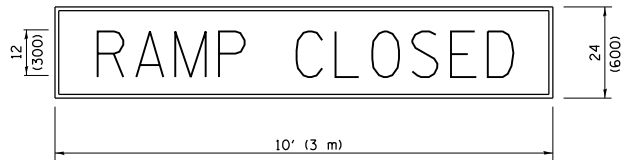
SYMBOLS

- TYPE II BARRICADE OR DRUM
- TYPE III BARRICADE WITH 2 FLASHING LIGHTS



DETAIL FOR REQUIRED BARRICADES & SIGNS

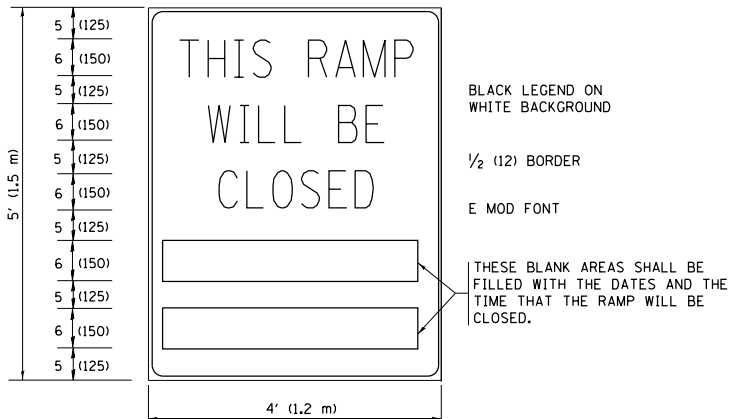
RAMP CLOSURE ADVANCE WARNING SIGN



BLACK LEGEND ON ORANGE BACKGROUND MOUNTED DIAGONALLY
E MOD FONT
1 (25) BORDER

THESE SIGNS ARE REQUIRED ON ALL THE EXIT GUIDE SIGNS FOR EXIT RAMPS THAT WILL BE CLOSED FOR MORE THAN FOUR (4) CONSECUTIVE DAYS.

RAMP CLOSURE ADVANCE INFORMATION SIGN



BLACK LEGEND ON WHITE BACKGROUND

1/2 (12) BORDER

E MOD FONT

THESE BLANK AREAS SHALL BE FILLED WITH THE DATES AND THE TIME THAT THE RAMP WILL BE CLOSED.

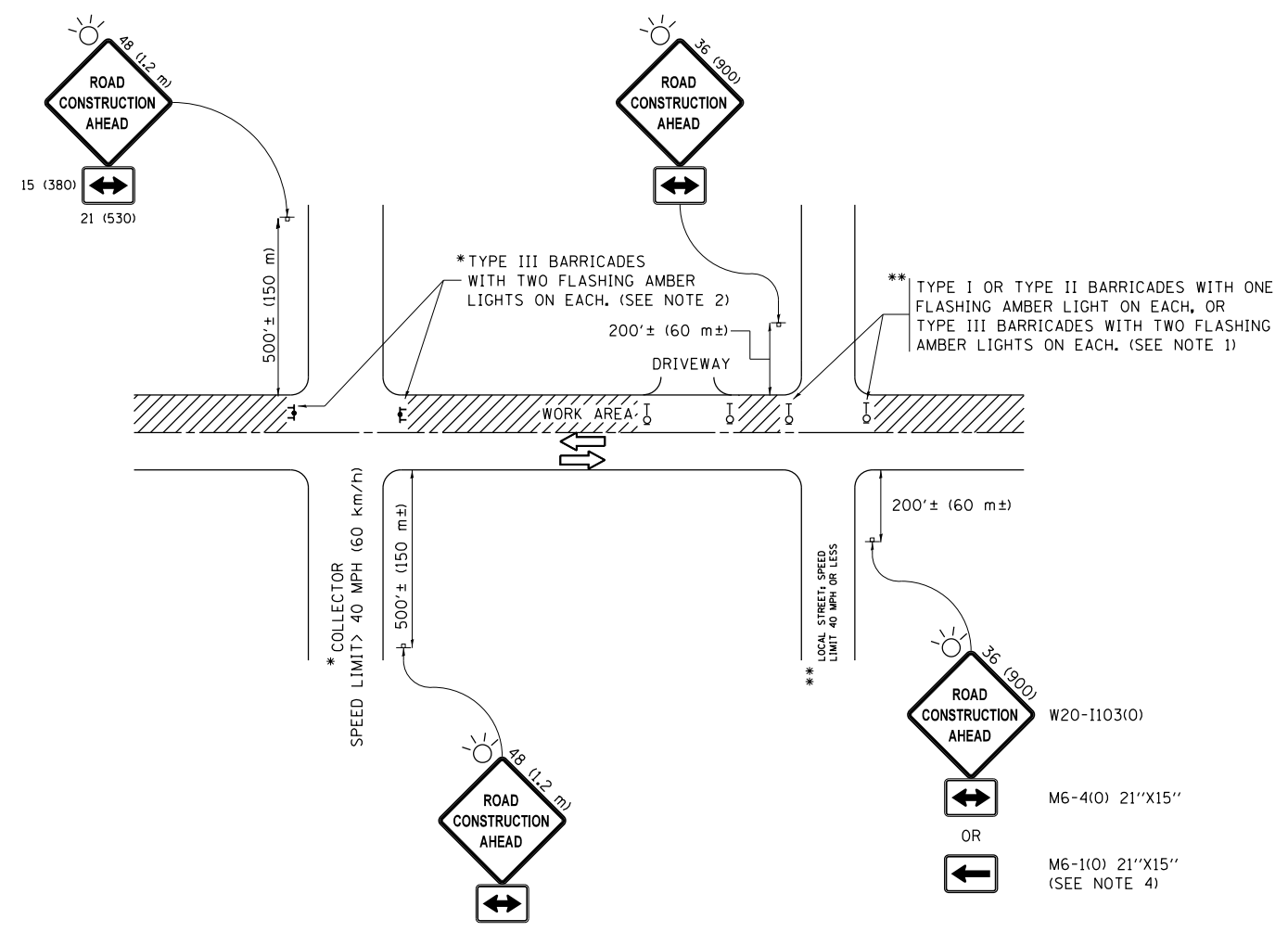
THESE SIGNS ARE REQUIRED ON BOTH SIDES OF THE RAMP, MINIMUM OF 1 WEEK IN ADVANCE OF THE CLOSURE.

THESE SIGNS SHALL BE FABRICATED AND PAID FOR ACCORDING TO THE TEMPORARY INFORMATION SIGNING SPECIAL PROVISION

GENERAL NOTES:

- CONES MAY BE SUBSTITUTED FOR DRUMS OR TYPE II BARRICADES DURING DAY OPERATIONS. CONES SHALL BE A MINIMUM OF 28 (700) HIGH.
- VERTICAL BARRICADES SHALL NOT BE USED FOR RAMP CLOSURES.
- A FLAGGER SHALL BE POSITIONED AT EACH CLOSED RAMP THAT IS OPEN TO CONSTRUCTION VEHICLES, PRECEDED BY A W20-7 FLAGGER WARNING SIGN.
- ALL ROUTE MARKERS AND TRAILBLAZER ASSEMBLIES WHICH DIRECT MOTORISTS TO A CLOSED ENTRANCE RAMP SHALL BE COVERED WHEN THE RAMP IS CLOSED FOR MORE THAN FOUR (4) DAYS.
- THE SIGNING AND BARRICADING WHICH IS REQUIRED BY THIS DETAIL SHALL BE INCLUDED IN THE COST OF TRAFFIC CONTROL AND PROTECTION (EXPRESSWAYS).
- AUTHORIZATION FROM THE DISTRICT'S BUREAU OF TRAFFIC IS REQUIRED FOR ALL RAMP CLOSURES.
- THE RAMP CLOSURE ADVANCE INFORMATION SIGNS SHALL BE ERECTED IF THE CLOSURE TIME EXCEEDS TWENTY-FOUR (24) HOURS. ADDITIONAL ADVANCE WARNING SIGNS ON EXIT GUIDE SIGNING WILL BE REQUIRED FOR EXIT RAMP CLOSURES THAT EXCEED FOUR (4) DAYS IN LENGTH.
- ROAD CONSTRUCTION AHEAD SIGNS MAY BE OMITTED WHEN THIS DETAIL IS USED IN CONJUNCTION WITH OTHER TRAFFIC CONTROL THAT ALREADY INCLUDES A ROAD CONSTRUCTION AHEAD SIGN.
- ARTERIAL ROAD CONSTRUCTION AHEAD SIGNS SHALL BE INSTALLED ON THE LEFT SIDE OF TRAFFIC IF THE MEDIAN IS MORE THAN 10 FT WIDE.

ALL DIMENSIONS ARE IN INCHES (MILLIMETERS) UNLESS OTHERWISE SHOWN.



NOTES:

1. SIDE ROAD WITH A SPEED LIMIT OF 40 MPH (60 km/h) OR LESS AS SHOWN ON THE DRAWING AND AS DIRECTED BY THE ENGINEER:

a) ONE "ROAD CONSTRUCTION AHEAD" SIGN 36 x 36 (900x900) WITH A FLASHER MOUNTED ON IT APPROXIMATELY 200' (60 m) IN ADVANCE OF THE MAIN ROUTE.
b) THE CLOSED PORTION OF THE MAIN ROUTE SHALL BE PROTECTED BY BLOCKING WITH TYPE I, TYPE II OR TYPE III BARRICADES, 1/3 OF THE CROSS SECTION OF THE CLOSED PORTION.
2. SIDE ROAD WITH A SPEED LIMIT GREATER THAN 40 MPH (60 km/h) AS SHOWN ON THE DRAWING AND AS DIRECTED BY THE ENGINEER:

a) ONE "ROAD CONSTRUCTION AHEAD" SIGN 48 x 48 (1.2 m x 1.2 m) WITH A FLASHER MOUNTED ON IT APPROXIMATELY 500' (150 m) IN ADVANCE OF THE MAIN ROUTE.
b) THE CLOSED PORTION OF THE MAIN ROUTE SHALL BE PROTECTED BY BLOCKING WITH TYPE III BARRICADES, 1/2 OF THE CROSS SECTION OF THE CLOSED PORTION.
3. CONES MAY BE SUBSTITUTED FOR BARRICADES OR DRUMS AT HALF THE SPACING DURING DAY OPERATIONS. CONES SHALL BE A MINIMUM OF 28 (710) IN HEIGHT.
4. WHEN THE SIDE ROAD LIES BETWEEN THE BEGINNING OF THE MAINLINE SIGNING AND THE WORK ZONE, A SINGLE HEADED ARROW (M6-1) SHALL BE USED IN LIEU OF THE DOUBLE HEADED ARROW (M6-4).
5. WHEN WORK IS BEING PERFORMED ON A SIDE ROAD OR DRIVEWAY, FOLLOW THE APPLICABLE STANDARD(S). THE DIRECTIONAL ARROW (M6-1 OR M6-4) SHALL BE COVERED OR REMOVED WHEN NO LONGER CONSISTENT WITH THE TRAFFIC CONTROL SET-UP.
6. ADVANCE WARNING SIGNS ARE TO BE OMITTED ON DRIVEWAYS UNLESS OTHERWISE SPECIFIED IN THE PLANS OR BY THE ENGINEER.
7. THE TRAFFIC CONTROL AND PROTECTION FOR SIDE ROADS, INTERSECTIONS, AND DRIVEWAYS SHALL BE INCLUDED IN THE COST OF SPECIFIED TRAFFIC CONTROL STANDARDS OR ITEMS.

All dimensions are in inches (millimeters) unless otherwise shown.

FILE NAME =	USER NAME = pyzranowskirb	DESIGNED - L.H.A.	REVISED - A. HOUSEH 10-15-96	STATE OF ILLINOIS DEPARTMENT OF TRANSPORTATION	TRAFFIC CONTROL AND PROTECTION FOR SIDE ROADS, INTERSECTIONS, AND DRIVEWAYS	SCALE: NONE	SHEET 1	OF 1	SHEETS	STA.	TO STA.	F.A. RTE.	SECTION	COUNTY	TOTAL SHEETS	SHEET NO.
pwt\11\084EBID\INTEG\Illinois.gov\PI\DOT\Documents\IDOT Offices\District 1\Projects\DI34318\Design\DI34318-sht-plan.dgn			REVISED - T. RAMMACHER 01-06-00									VAR.	2018-009-GR	VARIOUS	13	10
	PLOT SCALE = 100.0000' / in.	CHECKED -	REVISED - A. SCHUETZE 07-01-13									TC-10		CONTRACT NO. 62682		
Default	PLOT DATE = 6/19/2018	DATE - 06-89	REVISED - A. SCHUETZE 09-15-16									ILLINOIS FED. AID PROJECT				

FIGURE 1

	WORK AREA
	LANE OPEN TO TRAFFIC
	ARROW BOARD
	TYPE I OR II BARRICADE OR DRUM WITH STEADY BURN LIGHT
	DRUM WITH STEADY BURN LIGHT
	SIGN ASSEMBLY
	TYPE I OR II CHECK BARRICADE WITH FLASHING LIGHT

1. WHEN "L" IS \leq THE STORAGE LENGTH OF THE TURN LANE (AS SHOWN IN FIG. 1), USE FIGURE 1.

B) WHEN "L" IS $>$ THE STORAGE LENGTH OF THE TURN LANE OR THE TURN LANE IS WITHIN THE LANE CLOSURE, USE FIGURE 2.
2. CONES MAY BE SUBSTITUTED FOR BARRICADES OR DRUMS AT HALF THE SPACING DURING DAY OPERATIONS. CONES SHALL BE A MINIMUM OF 28 (710) IN HEIGHT.
3. LIGHTS SHALL NOT BE REQUIRED ON BARRICADES OR DRUMS FOR DAY OPERATIONS. ALL LIGHTS SHALL BE MONODIRECTIONAL.
4. REFLECTIVE TEMPORARY PAVEMENT MARKINGS SHALL BE PLACED THROUGHOUT THE BARRICADED AREAS OF EACH TURN BAY AS SHOWN WHERE THE CLOSURE TIME IS GREATER THAN FOURTEEN (14) DAYS.
5. THIS APPLICATION ALSO APPLIES WHEN WORK IS BEING PERFORMED IN THE RIGHT LANE(S) AND THE RIGHT TURN BAY IS TO REMAIN OPEN. UNDER THIS CONDITION, "RIGHT TURN LANE" R3-110OR 24 x 24 (600 x 600) AND M6-2R 21 x 15 (530 x 380) SHALL BE USED.
6. THESE CONTROLS SHALL SUPPLEMENT MAINLINE TRAFFIC CONTROL FOR LANE CLOSURES.
7. THE SIGNS SHALL BE MOUNTED ABOVE THE BARRICADES/DRUMS ON SEPARATE SIGN SUPPORTS THAT MEET NCHRP 350 OR MASH REQUIREMENTS.
8. TRAFFIC CONTROL AND PROTECTION AT TURN BAYS (TO REMAIN OPEN TO TRAFFIC) SHALL BE INCLUDED IN THE COST OF SPECIFIED TRAFFIC CONTROL STANDARDS OR ITEMS.

CONFLICTING PAVEMENT MARKING REMOVAL (TYP.)

ONLY

20' MIN.

SEE DETAIL "A"

6" WHITE REFLECTIVE PAVEMENT MARKING TAPE

4" YELLOW REFLECTIVE PAVEMENT MARKING TAPE (REMOVE CONFLICTING WHITE SKIP-DASH LINES FIRST.)

MEDIAN

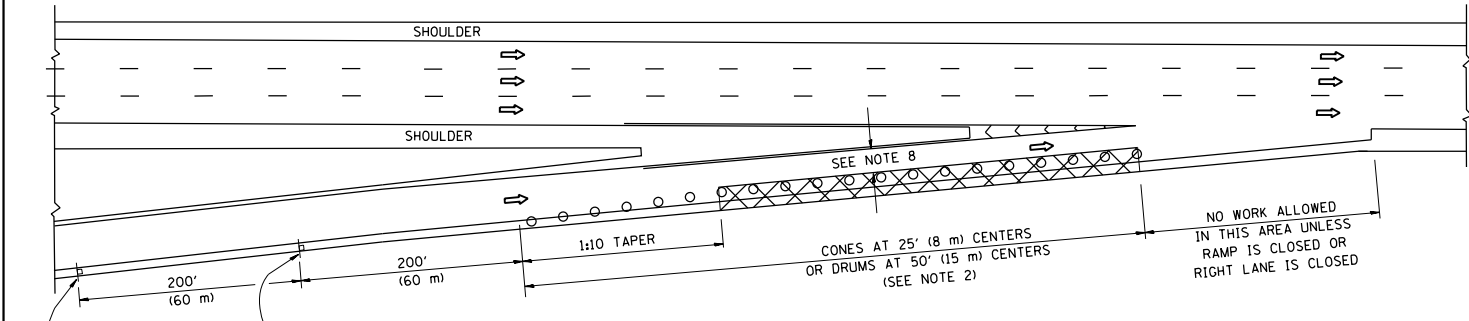
FIGURE 2

Diagram illustrating the dimensions and stabilization requirements for a Left Turn Lane sign assembly:

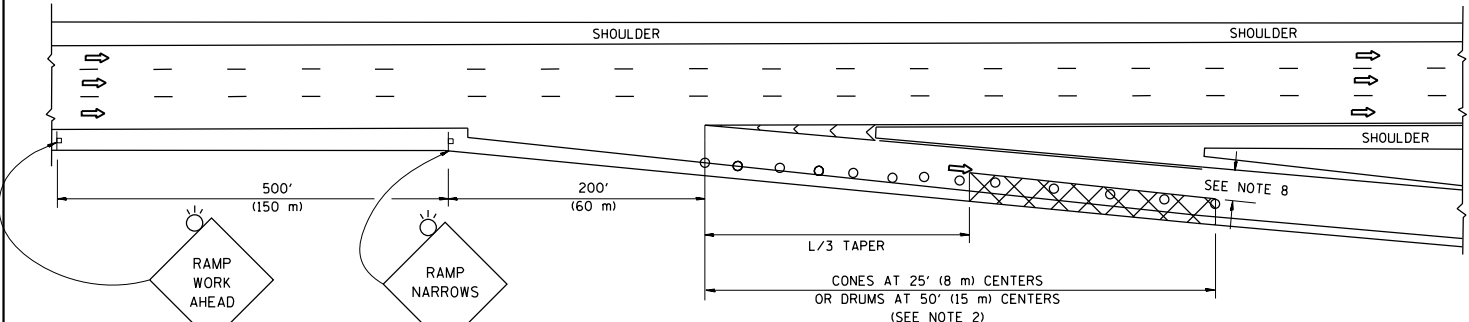
- Sign Dimensions:**
 - R3-1100L:** 24 x 24 (600 x 600)
 - M6-2L:** 21 x 15 (530 x 380)
- Minimum Height:** 5' (1.5 m) MIN. (SEE NOTE 7)
- Stabilization:** STABILIZE SIGN SUPPORT WITH SANDBAGS AS NECESSARY

All dimensions are in inches (millimeters)
unless otherwise shown.

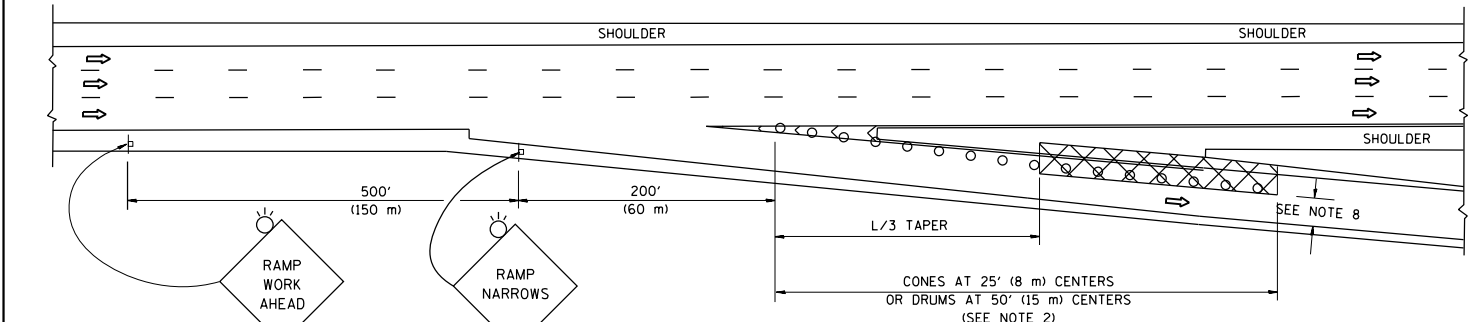
PARTIAL RAMP CLOSURE DETAILS



TYPICAL ENTRANCE RAMP



TYPICAL EXIT RAMP



TYPICAL EXIT RAMP

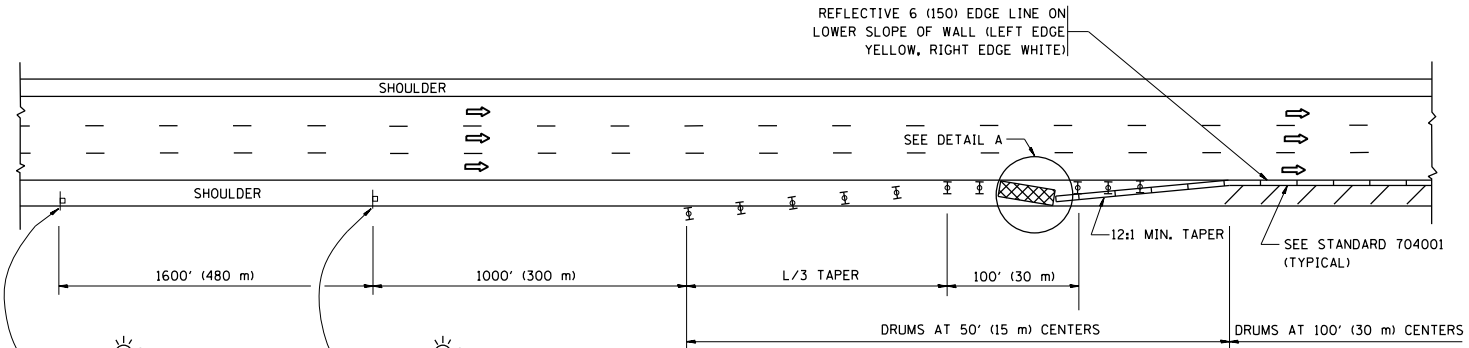
SYMBOLS

- ACTIVE WORK AREA
- SIGN ON PORTABLE OR PERMANENT SUPPORT
- FLAGGER WITH CONTROL SIGN
- TYPE II BARRICADE OR DRUM
- CONE, DRUM OR BARRICADE
- IMPACT ATTENUATOR OF TYPE AND TEST LEVEL SPECIFIED

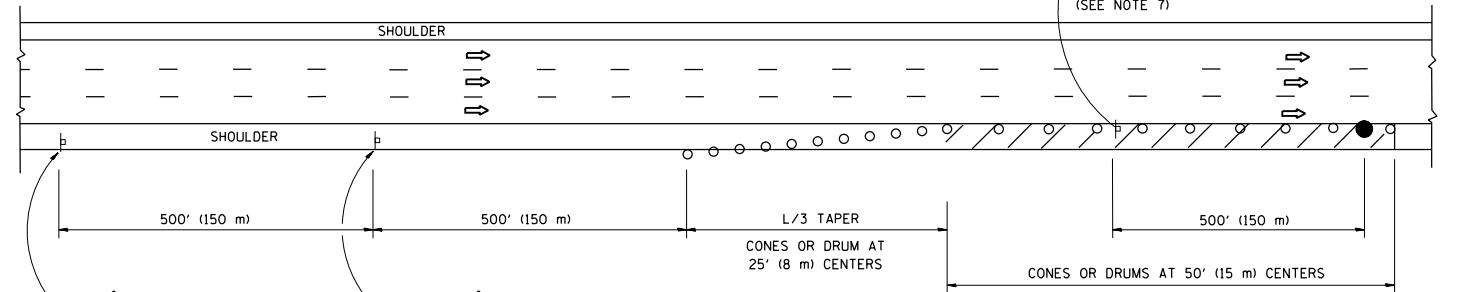
GENERAL NOTES

1. THE "L" DISTANCE EQUALS:
- | SPEED LIMIT | FORMULAS |
|------------------------------|---|
| 45 mph (80 km/h) OR GREATER: | METRIC: $L = 0.65(W)(S)$
ENGLISH: $L = (W)(S)$ |
- W = WIDTH OF OFFSET IN FEET (METERS)
S = NORMAL POSTED SPEED MPH (KM/H)
2. TYPE II BARRICADES OR DRUMS ARE REQUIRED FOR ALL NIGHTTIME CLOSURES. TYPE II BARRICADES OR DRUMS WITH MONODIRECTIONAL STEADY BURN LIGHTS ARE REQUIRED FOR DELINEATING OBSTACLES, EXCAVATIONS, OR HAZARDS EXCEEDING 100 FT (30m) IN LENGTH AT NIGHT.
3. ALL SIGNS SHALL BE POST MOUNTED IF THE CLOSURE TIME EXCEEDS FOUR DAYS.
4. FLASHING LIGHTS SHALL BE USED DURING THE HOURS OF DARKNESS AND SHALL BE INSTALLED ABOVE THE FIRST TWO SETS OF SIGNS.

SHOULDER CLOSURE DETAILS

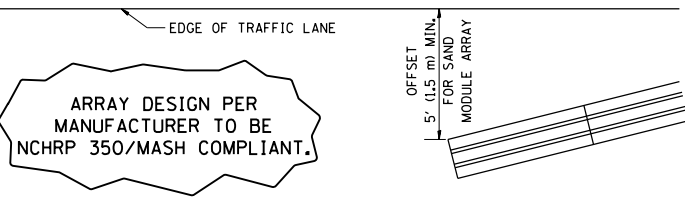


PERMANENT SHOULDER CLOSURE



DAYTIME SHOULDER CLOSURE

- THIS DETAIL IS USED WHERE:
1. VEHICLES, EQUIPMENT, WORKERS OR THEIR ACTIVITIES ENCROACH IN AN AREA CLOSER THAN 15' (4.5 m) TO THE EDGE OF PAVEMENT FOR A PERIOD IN EXCESS OF 15 MINUTES.



DETAIL "A"
IMPACT ATTENUATOR, TEMPORARY
(SEE NOTE 5)

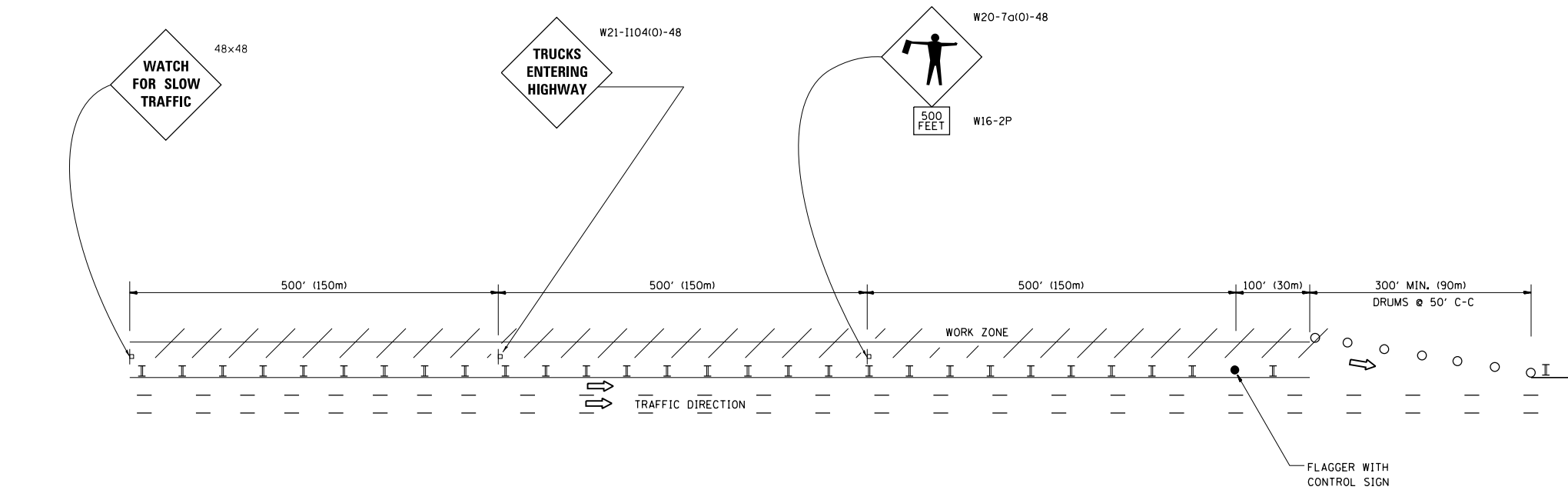
5. THE IMPACT ATTENUATOR, TEMPORARY IS NOT REQUIRED WHEN THE TEMPORARY CONCRETE BARRIER WALL IS PROTECTED BY OR IS TIED INTO THE EXISTING GUARDRAIL. IF OFFSET IS LESS THAN 5 FEET USE NARROW USE TYPE DEVICE TO MEET NCHRP350/MASH.
6. AUTHORIZATION FROM THE DISTRICT'S BUREAU OF TRAFFIC IS REQUIRED FOR ALL FREEWAY CLOSURES.
7. THE FLAGGER AND FLAGGER SIGN ARE REQUIRED AT THE ABOVE WORK SITES WHEN:
- a. FOUR OR MORE WORK VEHICLES ENTER THE TRAFFIC LANES IN A ONE HOUR PERIOD.
- b. THE WORK ACTIVITY REQUIRES FREQUENT ENCROACHMENT INTO THE LANE OPEN TO TRAFFIC.
- THE FLAGGER SHALL BE STATIONED APPROXIMATELY 100' (30 m) TO 200' (60 m) IN ADVANCE OF THE WORKERS.
8. 12' MIN. WIDTH TANGENT SECTION
16' MIN. WIDTH CURVE SECTION.

ALL DIMENSIONS ARE IN INCHES (MILLIMETERS) UNLESS OTHERWISE SHOWN.

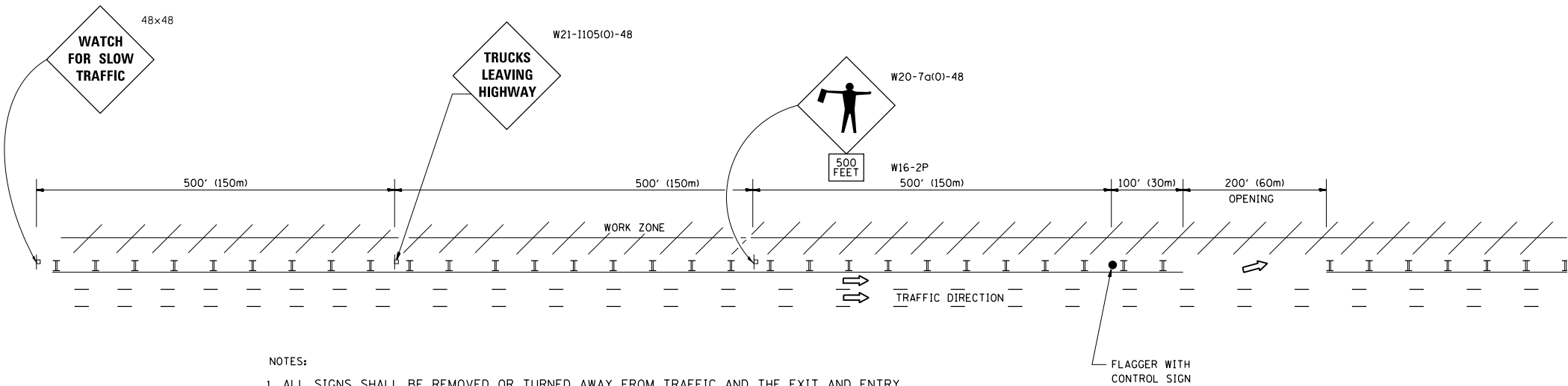
FILE NAME =	USER NAME = pyzenowskirb	DESIGNED -	REVISED - S.P.B. 01-07	STATE OF ILLINOIS DEPARTMENT OF TRANSPORTATION	TRAFFIC CONTROL DETAILS FOR FREEWAY SHOULDER CLOSURES AND PARTIAL RAMP CLOSURES	F.A. RTE.	SECTION	COUNTY	TOTAL SHEETS	SHEET NO.
p:\11084EBID\INTEG\Illinois.gov\PI\DOT\Documents\DOT Offices\District 1\Projects\DI349\BROWN\Design\DWG\11084EBID-18-sht-plen.dgn		CHECKED -	REVISED - S.P.B. 12-09			VAR.	2018-009-GR	VARIOUS	13	12
Default		DATE - 11-96	REVISED - M.D. 06-13			TC-17		CONTRACT NO. 62082		
			REVISED - M.D. 01-18			ILLINOIS FED. AID PROJECT				
SCALE: NONE					SHEET 1	OF 1	SHEETS	STA.	TO STA.	

SIGNING FOR FLAGGING OPERATIONS AT WORK ZONE OPENINGS

WORK ZONE EXIT OPENING



WORK ZONE ENTRY OPENING



NOTES:

1. ALL SIGNS SHALL BE REMOVED OR TURNED AWAY FROM TRAFFIC AND THE EXIT AND ENTRY OPENINGS SHALL BE CLOSED WHEN THE FLAGGING OPERATION CEASES. NON OPERATING EQUIPMENT SHALL COMPLY WITH ARTICLE 701.11
2. WORK ZONE OPENINGS SHALL BE A MINIMUM OF ONE HALF MILE APART AND A MINIMUM OF ONE QUARTER MILE FROM ALL ENTRANCE AND EXIT RAMP.
3. EXITING THE WORK ZONE AT ANY PLACE OTHER THAN AT A WORK ZONE EXIT OPENING WILL BE PROHIBITED.
4. ALL VEHICLES SHALL ENTER THE WORK ZONE AT ENTRY OPENINGS, USING THEIR TURN SIGNALS TO WARN MOTORISTS
5. FLAGGERS SHALL NOT STOP TRAFFIC OR DIRECT TRAFFIC INTO AN ADJACENT LANE.

ALL DIMENSIONS ARE IN INCHES (MILLIMETERS)
UNLESS OTHERWISE SHOWN

FILE NAME = p:\1\1084EBIDINTEG\Illinois.gov\PWIDOT\Documents\IDOT Offices\District 1\Projects\DI3438\Design\DI3438-sht-pln.dgn	USER NAME = pyraznowskirb	DESIGNED -	REVISED - J.A.F. 02-06	STATE OF ILLINOIS DEPARTMENT OF TRANSPORTATION	FREEWAY/EXPRESSWAY SIGNING FOR FLAGGING OPERATIONS AT WORK ZONE OPENINGS ON FREEWAYS/EXPRESSWAYS			F.A. RTE.	SECTION	COUNTY	TOTAL SHEETS	SHEET NO.
			REVISED - S.P.B. 01-07					VAR.	2018-009-GR	VARIOUS	13	13
	PLOT SCALE = 100.0000' / in.	CHECKED -	REVISED - S.P.B. 12-09		TC-18			CONTRACT NO. 62682				
	PLOT DATE = 6/19/2018	DATE -	REVISED - M.D. 06-13		SCALE: NONE	SHEET NO. 1 OF 1 SHEETS	STA.	TO STA.	FED. ROAD DIST. NO. 1 ILLINOIS FED. AID PROJECT			