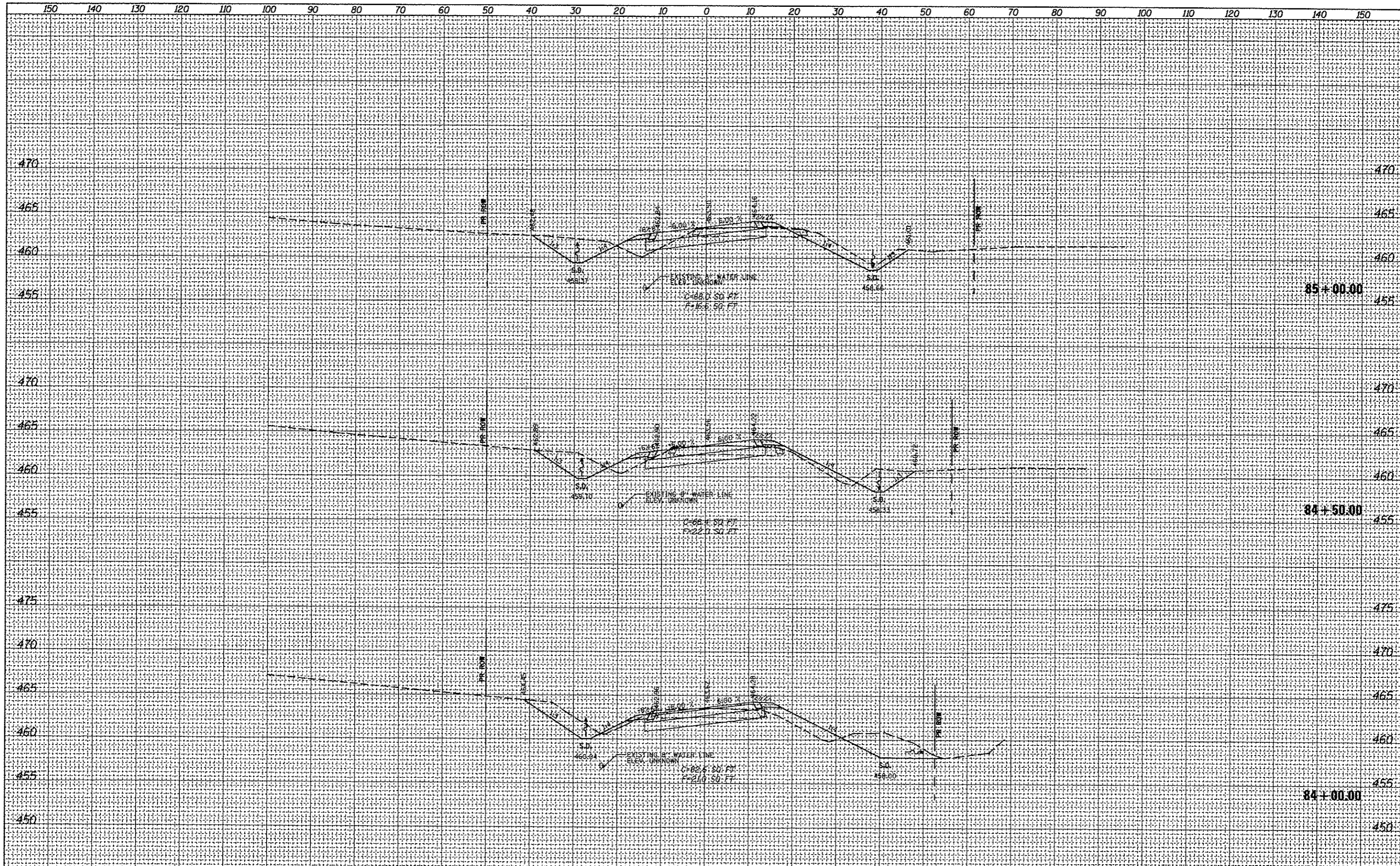


DATE	
BY	
SURVEYED	
PROF'D	
TEMP'LY	
NOTE BOOK	
AREAS CHECKED	
NO.	

DATE	
BY	
SURVEYED	
PROF'D	
TEMP'LY	
NOTE BOOK	
AREAS CHECKED	
NO.	



FILE NAME =	USER NAME = bargnd	DESIGNED -	REVISED -	STATE OF ILLINOIS DEPARTMENT OF TRANSPORTATION	PROPOSED SHATTUC CROSS SECTIONS	F.A.P. RTE.	SECTION	COUNTY	TOTAL SHEETS	SHEET NO.
cr:\p\work\p\dot\bar\gnd\d839975\0076053-wh	ssah1.dgn	DRAWN -	REVISED -			327	21-1-1, 27-1	CLINTON	96	41
PLOT SCALE = 20.0000' / in.		CHECKED -	REVISED -			CONTRACT NO. 76D53				
PLOT DATE = 6/15/2012		DATE -	REVISED -			ILLINOIS FED. AID PROJECT				
SCALE:						SHEET 6 OF 21 SHEETS STA. 84+00.00 TO STA. 85+00.00				