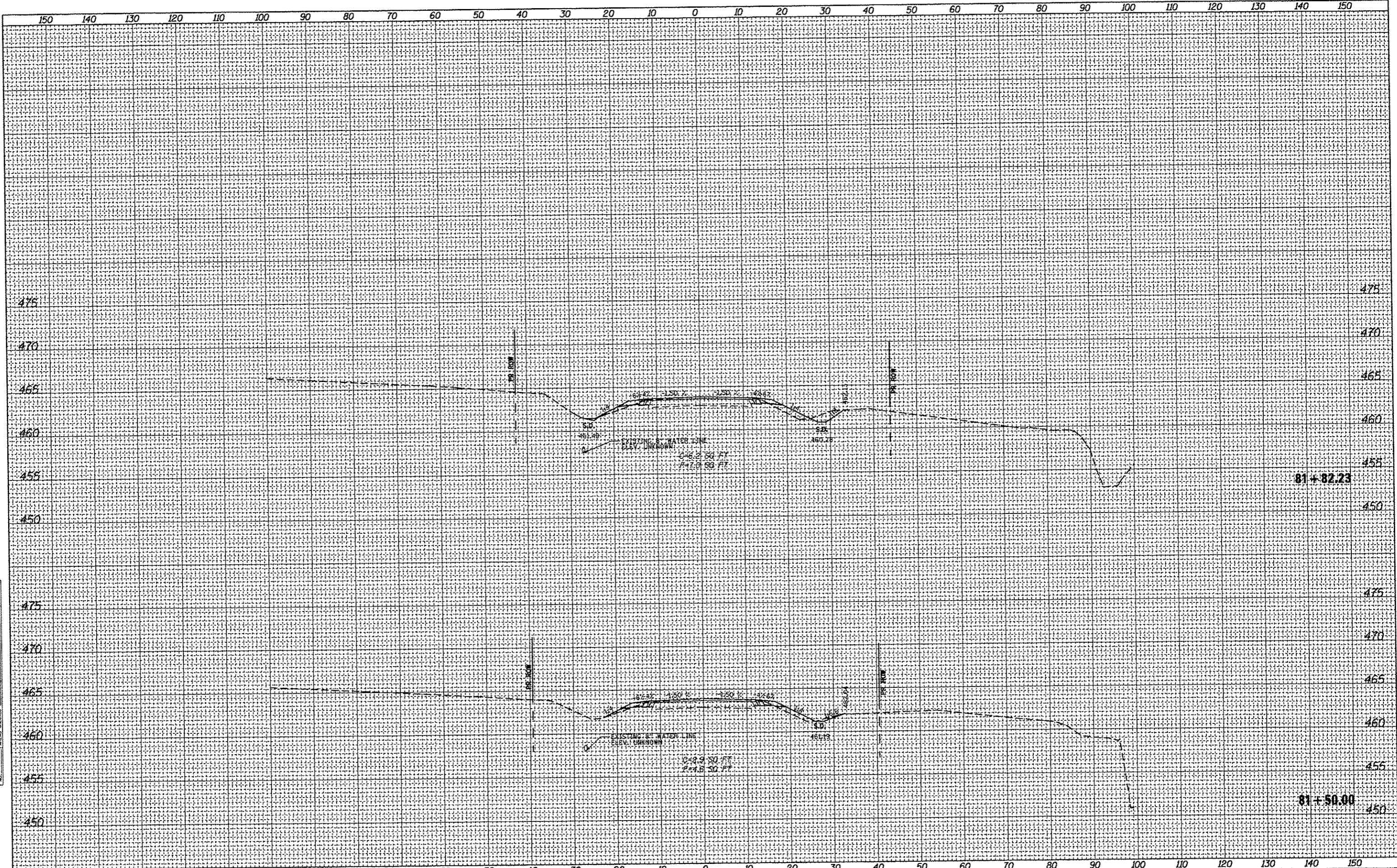


DATE	
BY	
REVISIONS	
SURVEY	
PLOTTED	
TEMPLATE	
NOTE BOOK	
NO.	
AREAS CHECKED	

DATE	
BY	
REVISIONS	
SURVEY	
PLOTTED	
TEMPLATE	
NOTE BOOK	
NO.	
AREAS CHECKED	



FILE NAME =	USER NAME = bergnd	DESIGNED -	REVISED -	STATE OF ILLINOIS DEPARTMENT OF TRANSPORTATION	PROPOSED SHATTUC CROSS SECTIONS			P.A.P. RTE. 327 SECTION 21-1-1, 27-1 COUNTY CLINTON TOTAL SHEETS 96 SHEET NO. 36 CONTRACT NO. 76053 ILLINOIS FED. AID PROJECT	
al:\pwork\puidat\bergnd\08309875\0876053-ahh	caah1.dgn	DRAWN -	REVISED -		SCALE:	SHEET 1	OF 21 SHEETS		STA. 81+50.00 TO STA. 81+82.23
		CHECKED -	REVISED -						
		DATE -	REVISED -						