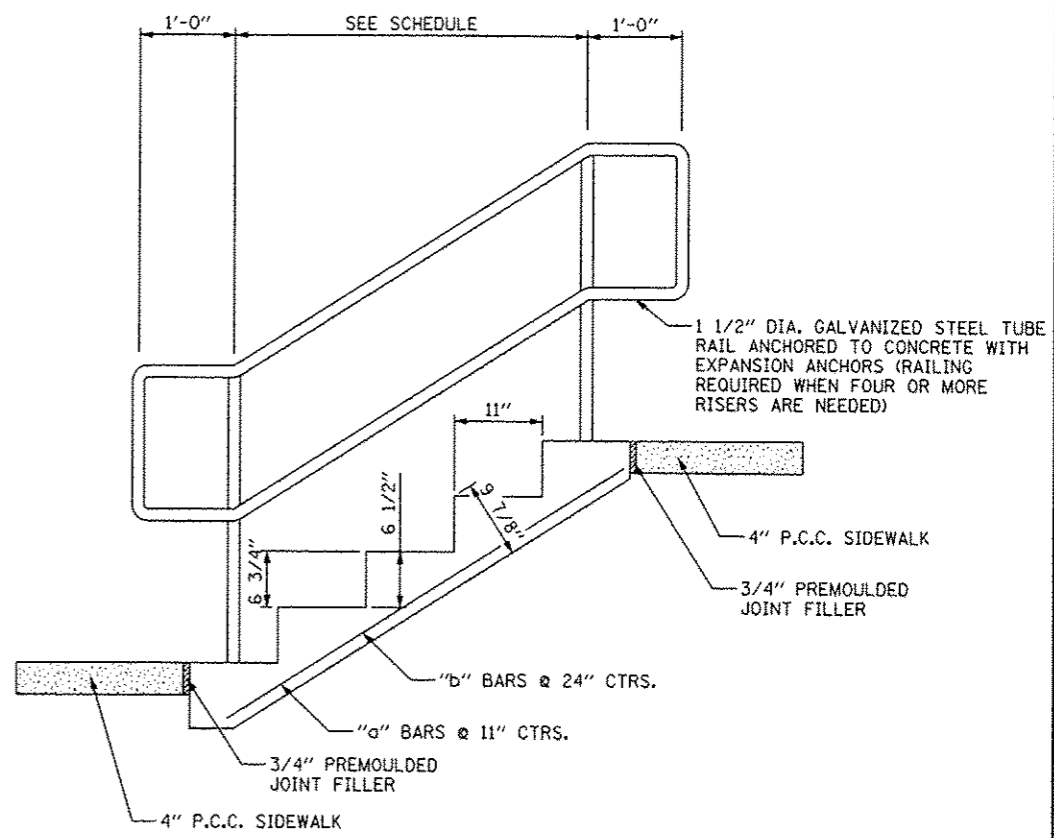


3/4" Ø HOOKED EXPANSION BOLTS (TYP.) SHALL EXTEND A MINIMUM OF 9" INTO NEW CONCRETE. MINIMUM CERTIFIED PROOF LOAD= 4,080 LBS.

END VIEW

SIDE VIEW



**GENERAL NOTES:**

1. CLASS SI CONCRETE SHALL BE USED THROUGHOUT.
2. WHEN CONCRETE COLLARS ARE USED TO CONNECT BOXES OF DIFFERENT OUTSIDE DIMENSIONS, THE CONCRETE COLLAR SHALL BE FORMED USING THE LARGEST OUTSIDE DIMENSION. (SEE END VIEW)
3. THE WIRE MESH SHALL WEIGHT NOT LESS THAN 54 POUNDS PER 100 SQ. FT.
4. CONCRETE COLLARS WILL BE PAID FOR AT THE CONTRACT UNIT PRICE. PER CU. YD., FOR CONCRETE COLLARS INCLUDING ALL MATERIALS AND LABOR SPECIFIED TO COMPLETE THE WORK IN PLACE.

| NO. OF RISERS | WIDTH (IN.) | CLASS "SI" CONCRETE CUBIC YARDS | #4 REINFORCEMENT BARS |     |        |        | PIPE HANDRAIL FT. |
|---------------|-------------|---------------------------------|-----------------------|-----|--------|--------|-------------------|
|               |             |                                 | BAR                   | NO. | LENGTH | POUNDS |                   |
| 1             | 48          | 0.17                            | a                     | 5   | 2'-0"  | 12     |                   |
|               |             |                                 | b                     | 2   | 3'-9"  |        |                   |
| 2             | 48          | 0.26                            | a                     | 5   | 3'-0"  | 15     |                   |
|               |             |                                 | b                     | 2   | 3'-9"  |        |                   |
| 3             | 48          | 0.35                            | a                     | 5   | 4'-0"  | 21     |                   |
|               |             |                                 | b                     | 3   | 3'-9"  |        |                   |
| 4*            | 48          | 0.44                            | a                     | 5   | 5'-0"  | 24     | 4                 |
|               |             |                                 | b                     | 3   | 3'-9"  |        |                   |
| 5*            | 48          | 0.53                            | a                     | 5   | 6'-0"  | 30     | 5                 |
|               |             |                                 | b                     | 4   | 3'-9"  |        |                   |
| 6*            | 48          | 0.62                            | a                     | 5   | 7'-0"  | 33     | 6                 |
|               |             |                                 | b                     | 4   | 3'-9"  |        |                   |

\* RAILING REQUIRED