

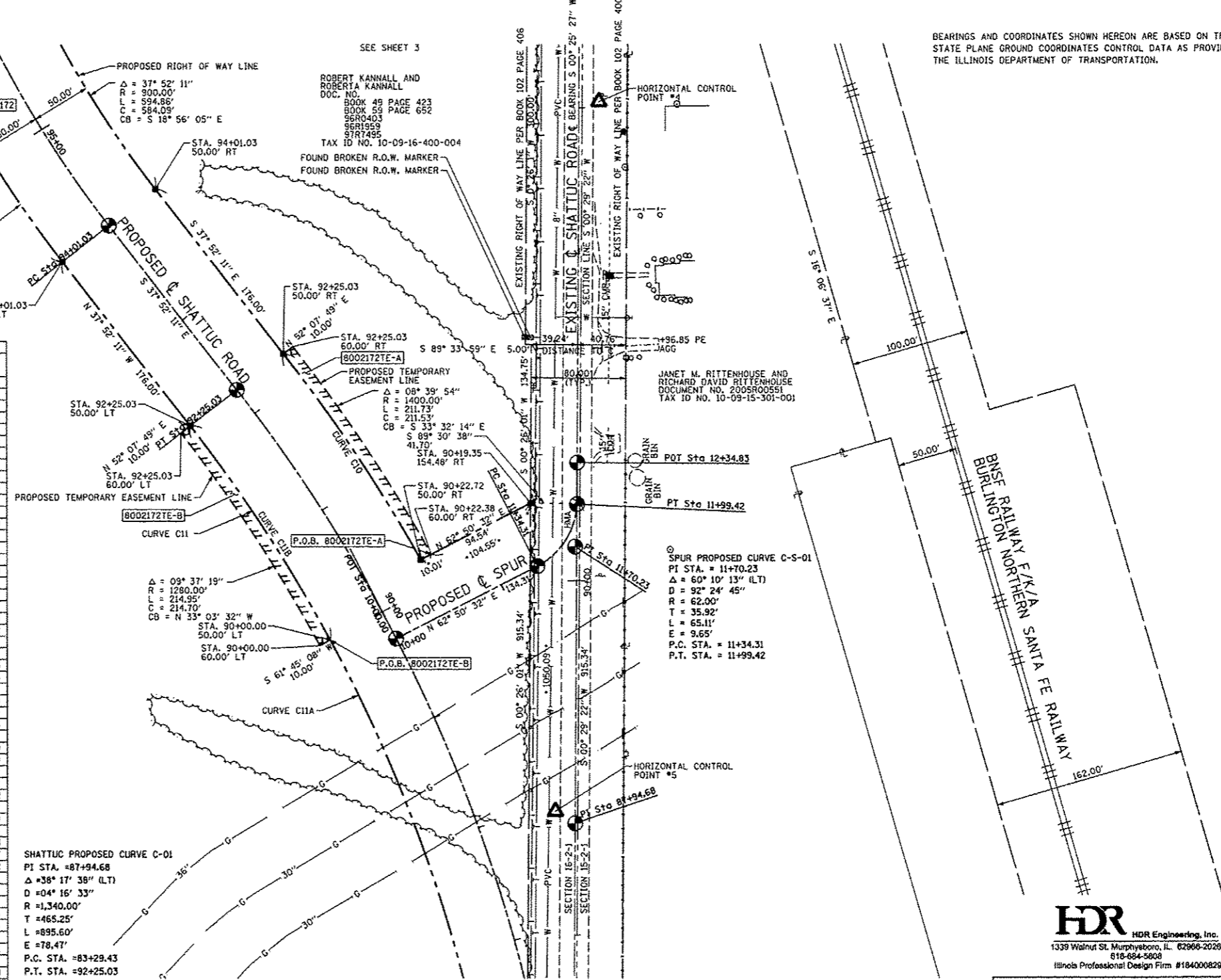
PART OF THE E. 1/2 OF SECTION 16 AND PART OF THE W. 1/2 OF SECTION 15, T. 2 N., R. 1 W., OF THE 3RD P.M., CLINTON COUNTY, ILLINOIS

BEARINGS AND COORDINATES SHOWN HEREON ARE BASED ON TRUNCATED STATE PLANE GROUND COORDINATES CONTROL DATA AS PROVIDED BY THE ILLINOIS DEPARTMENT OF TRANSPORTATION.



SEE LEGENDS, TOPOGRAPHIC STATEMENT, SURVEYORS NOTE(S) AND BASIS OF COORDINATES & BEARINGS STATEMENT ON SHEET 2

COORDINATE TABLE					
FAP 327 (US 50)		PROPOSED SHATTUC RD.		EXISTING SHATTUC RD.	
STATION	OFFSET	STATION	OFFSET	STATION	OFFSET
696+00.00	0.00'				
PC 696+75.11	0.00'				
697+69.88	25.75' LT				
697+83.54	74.94' LT				
697+84.17	33.06' RT				
697+88.38	54.94' LT				
697+89.60	55.06' RT				
697+93.74	32.94' LT				
697+96.14	23.11' LT				
698+57.74	74.94' LT				
698+61.10	170.01' LT				
698+90.58	54.94' LT				
698+95.93	0.00'				
699+19.92	55.05' RT				
699+36.36	57.96' LT				
PI 699+85.08					
701+00.00	54.96' LT				
PT 702+94.44	0.00'				
702+94.44	54.97' LT				
702+94.44	55.03' RT				
703+93.80	54.95' LT	100+99.70	102.38' RT		
704+43.75	107.32' LT	100+49.75	50.00' RT		
704+98.90	0.00'	101+59.57	0.00'		
705+44.09	102.54' LT	100+59.29	50.00' LT		
705+94.02	54.91' LT	101+09.23	97.62' LT		
706+00.00	40.10' RT				
708+00.00	54.86' LT				
711+00.00	32.79' LT				
711+00.00	40.21' RT				
712+00.00	33.23' RT				
712+07.90	32.77' LT				
712+10.58	33.23' RT				
713+00.00	0.00'				
		PT 100+28.93	0.00'		
		100+28.93	50.00' LT		
		100+28.93	50.00' RT		
		PI 97+26.93			
		PC 94+01.03	0.00'		
		94+01.03	50.00' LT		
		94+01.03	50.00' RT		
		PT 92+25.03	0.00'		
		92+25.03	50.00' LT		
		92+25.03	60.00' LT		
		92+25.03	50.00' RT		
		92+25.03	60.00' RT		
		90+00.00	50.00' LT		
		90+00.00	60.00' LT		
		90+22.72	50.00' RT		
		90+22.38	60.00' RT		
		90+19.35	154.48' RT		
		PI 87+94.68			
		85+88.28	66.83' RT		
		84+92.97	61.07' RT		
		84+91.81	70.99' RT		
		84+00.00	50.00' LT		
		84+00.00	60.00' LT		
		PC 83+29.43	0.00'		
		82+50.00	60.00' LT		
		82+50.00	50.00' LT		
		82+50.00	50.61' RT		
		82+50.00	60.61' RT		
		81+50.00	39.41' LT		
		81+50.00	0.00'		
		81+50.00	40.59' RT		
		PI 998.5828			
		91964.0869			
		910943.3353			
		910377.9338			
		909777.6275			
		910958.4846			
		908301.1810			
		HORIZONTAL CONTROL POINT #1			
		HORIZONTAL CONTROL POINT #2			
		HORIZONTAL CONTROL POINT #3			
		HORIZONTAL CONTROL POINT #4			
		HORIZONTAL CONTROL POINT #5			
		E 1/4 COR SEC 16, T2N, R1W			
		SE COR SEC 16, T2N, R1W			



SHATTUC PROPOSED CURVE C-01  
 PI STA. = 87+94.68  
 Δ = 38° 17' 38" (LT)  
 D = 04' 16' 33"  
 R = 1,340.00'  
 T = 465.25'  
 L = 895.60'  
 E = 78.47'  
 P.C. STA. = 83+29.43  
 P.T. STA. = 92+25.03

CURVE TABLE				
CURVE	DEFLECTION	RADIUS	LENGTH	CHORD BEARING
C10	08° 39' 01"	1390.00'	209.86'	S 33° 32' 40" E
C11	38° 17' 38"	1290.00'	862.18'	N 18° 43' 22" W
C11A	28° 40' 20"	1290.00'	645.54'	S 63° 83' 43" W
C11B	09° 37' 19"	1290.00'	216.63'	S 33° 03' 32" E

STATE OF ILLINOIS )  
 ) SS  
 COUNTY OF JACKSON )

I, GARY W. RAINES, AN ILLINOIS PROFESSIONAL LAND SURVEYOR, STATE THAT I HAVE SURVEYED THE PLAT OF HIGHWAY SHOWN HEREON AND THAT THIS PROFESSIONAL SERVICE CONFORMS TO THE CURRENT ILLINOIS MINIMUM STANDARDS FOR A BOUNDARY SURVEY FOR THE PROPOSED PARCEL(S) TO BE ACQUIRED BY THE STATE OF ILLINOIS, DEPARTMENT OF TRANSPORTATION, SHOWN HEREON.

DATED April 25, 2011

GARY W. RAINES, PLS NO. 2428  
 LICENSE EXPIRATION DATE: 11/30/2012



**HDR** HDR Engineering, Inc.  
 1339 Walnut St. Murphysboro, IL 62966-2026  
 618-684-3608  
 Illinois Professional Design Firm #184000829

ILLINOIS DEPARTMENT OF TRANSPORTATION  
 PLAT OF HIGHWAYS  
 FAP ROUTE 327 (US 50)  
 SECTION 21-I-1, 27-1  
 CLINTON COUNTY  
 JOB NO. R-98-002-10  
 SHATTUC ROAD - STATION 86+67 TO STATION 95+82

50' 0 50' 100'  
 SCALES 1" = 50'

SHEET 4 OF 6

F.A.P. RTE.	SECTION	COUNTY	TOTAL SHEETS	SHEET NO.
327	21-I-1, 27-1	CLINTON	96	28
COMPLETION DATE OF FIELD WORK PERFORMED			CONTRACT NO. 76D53	
LAND SURVEY: 02/11/2010		ROW STAKING: 11/12/2010		FED. ROAD DIST. NO. - ILLINOIS FED. AID PROJECT