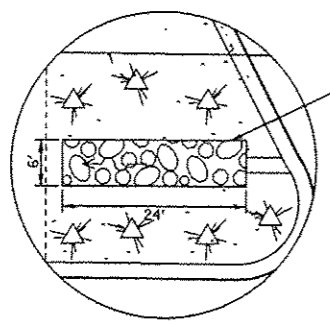


STONE RIPRAP,
CLASS A3, 13.33 SQ YDS
FILTER FABRIC, 13.33 SQ YDS

DETAIL A

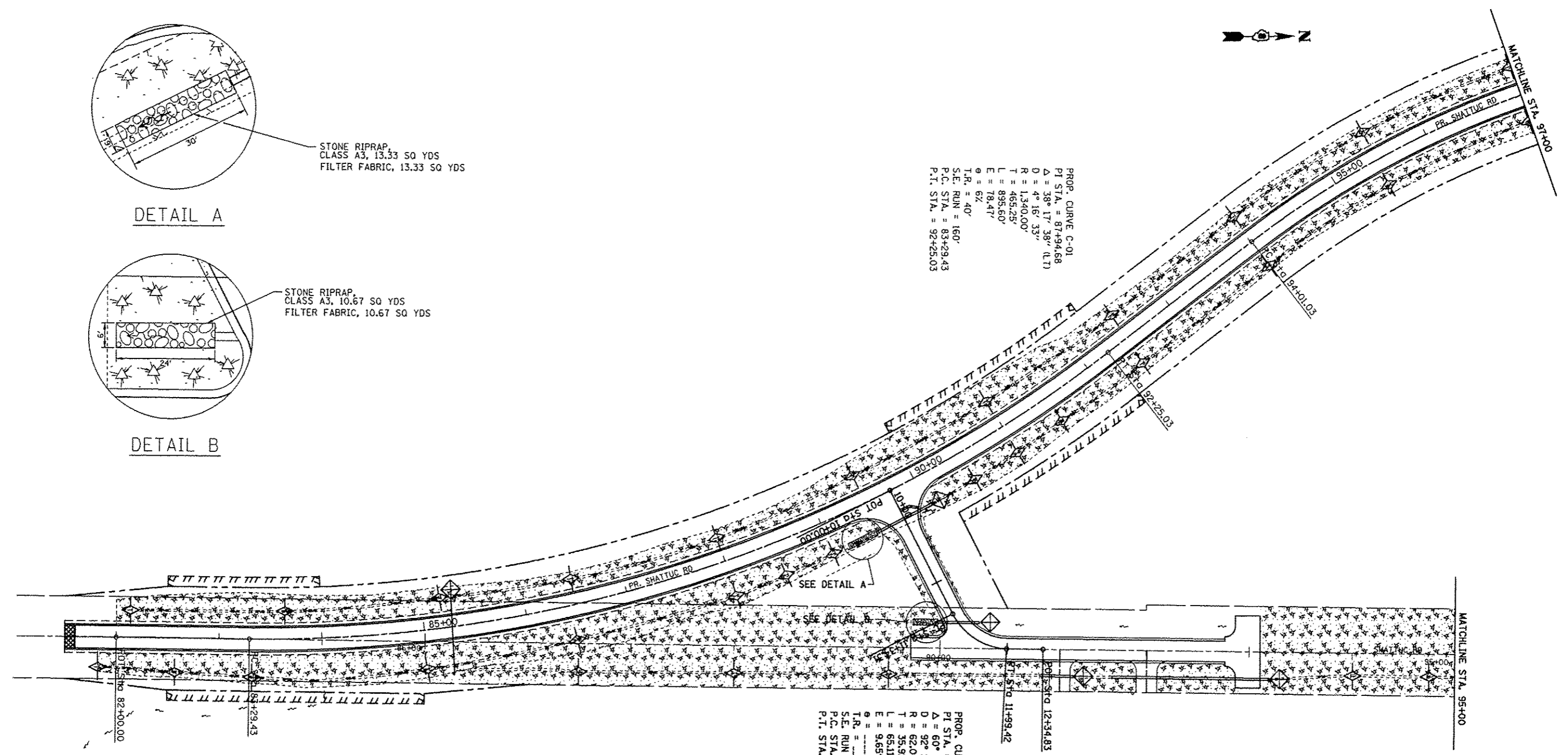


STONE RIPRAP,
CLASS A3, 10.67 SQ YDS
FILTER FABRIC, 10.67 SQ YDS

DETAIL B

PROP. CURVE C-01
PI STA. = 87+94.68
 $\Delta = 38^\circ 17' 38''$ (LT)
 $D = 4^\circ 16' 33''$
 $R = 1,340.00'$
 $T = 465.25'$
 $L = 893.60'$
 $E = 78.47'$
 $\theta = 6x$
T.R. = 40'
S.E. RUN = 160'
P.C. STA. = 83+29.43
P.T. STA. = 92+25.03

PROP. CURVE C-S-
PI STA. = 11+70.2
 $\Delta = 60^\circ 10' 13''$ U
 $D = 92^\circ 24' 45''$
 $R = 62.00'$
 $T = 35.92'$
 $L = 65.11'$
 $E = 9.65'$
 $\theta =$
T.R. =
S.E. RUN =
P.C. STA. = 11+34
P.T. STA. = 11+99



- TEMPORARY DITCH CHECK
- INLET AND PIPE PROTECTION
- SEEDING CLASS 2A: MULCH METHOD 2

FILE NAME :	USER NAME = bergmd	DESIGNED -	REVISED -
o:\pwork\puidos\bergmd\d0160007\0076	23-005-plan.dgn	DRAWN -	REVISED -
	PLOT SCALE = 100.0000 / 1" =	CHECKED -	REVISED -
	PLOT DATE = 6/15/2012	DATE -	REVISED -

STATE OF ILLINOIS
DEPARTMENT OF TRANSPORTATION

EROSION CONTROL SHEET

SCALE: SHEET 1 OF 2 SHEETS STA. TO STA.

F.A.P. RTE.	SECTION	COUNTY	TOTAL SHEETS	SHEET NO.
327	21-I-1,27-I	CLINTON	96	23
CONTRACT NO. 76053				
ILLINOIS FED. AID PROJECT				