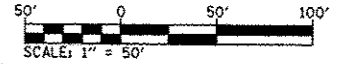
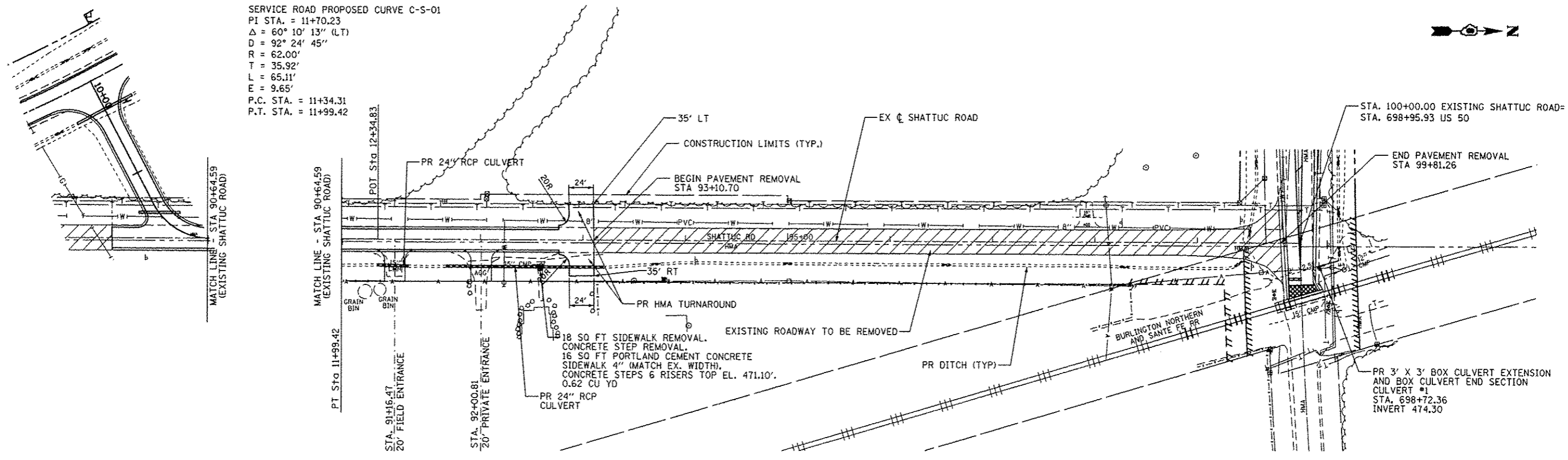
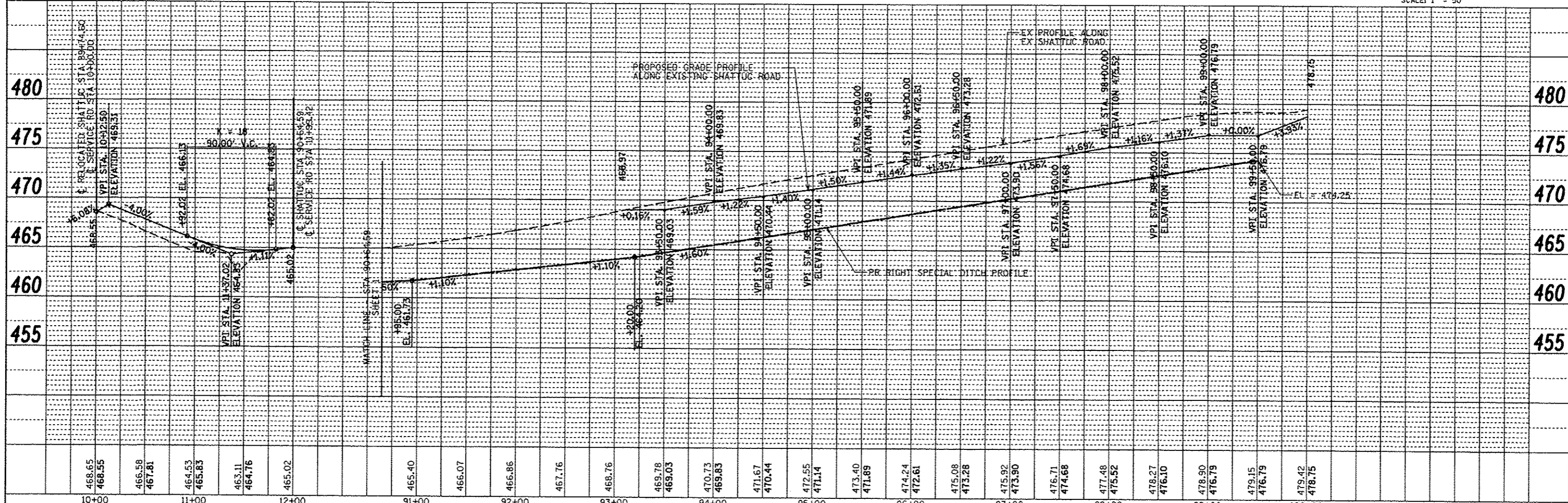


SERVICE ROAD PROPOSED CURVE C-S-01  
 PI STA. = 11+70.23  
 $\Delta = 60^\circ 10' 13''$  (LT)  
 $D = 92^\circ 24' 45''$   
 $R = 62.00'$   
 $T = 35.92'$   
 $L = 65.11'$   
 $E = 9.65'$   
 P.C. STA. = 11+34.31  
 P.T. STA. = 11+99.42



PLAN	BY	DATE
DESIGNED		
DRAWN		
CHECKED		
DATE		

PROFILE	BY	DATE
DESIGNED		
DRAWN		
CHECKED		
DATE		



FILE NAME =	USER NAME = bergmd	DESIGNED - DJO	REVISED -	<b>STATE OF ILLINOIS</b> <b>DEPARTMENT OF TRANSPORTATION</b>	<b>EXISTING SHATTUC ROAD</b> <b>PLAN AND PROFILE</b>	F.A.P. RTE.	SECTION	COUNTY	TOTAL SHEETS	SHEET NO.
at:\pwork\p\rdot\bergmd\0309075\087609	sh-p\p\prf3.dgn	DRAWN - DMW	REVISED -			327	21-1-1,27-1	CLINTON	96	17
PLOT SCALE = 180.0000' / in.	DATE = 6/15/2012	CHECKED -	REVISED -			CONTRACT NO. 76D53				
		DATE -	REVISED -			ILLINOIS FED. AID PROJECT				