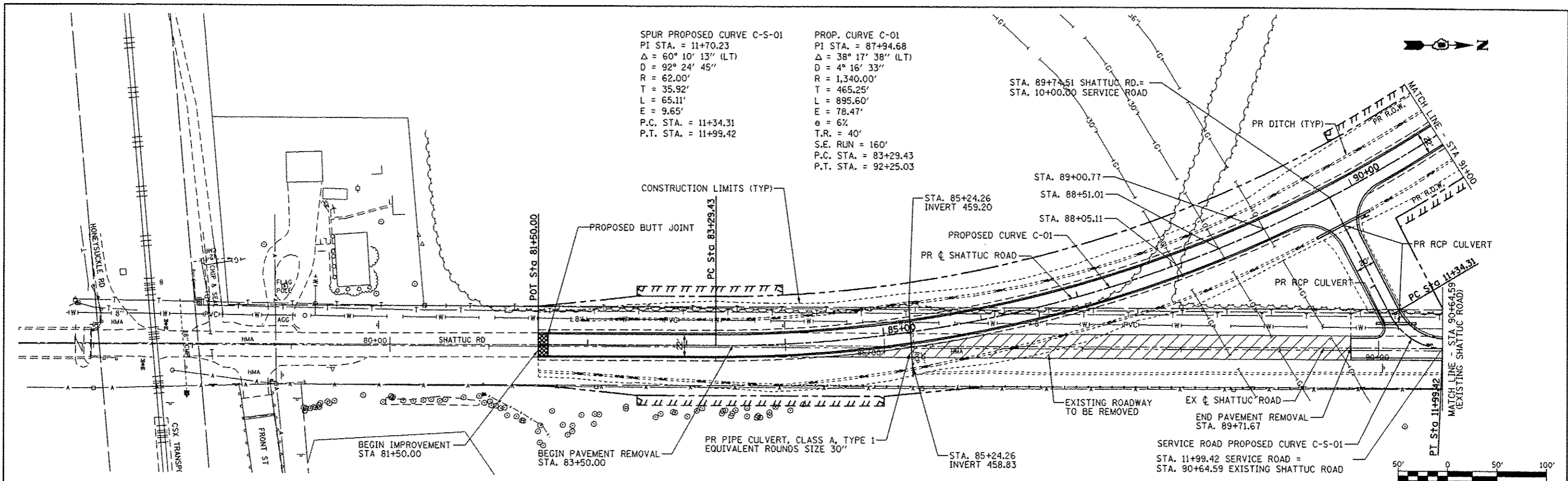


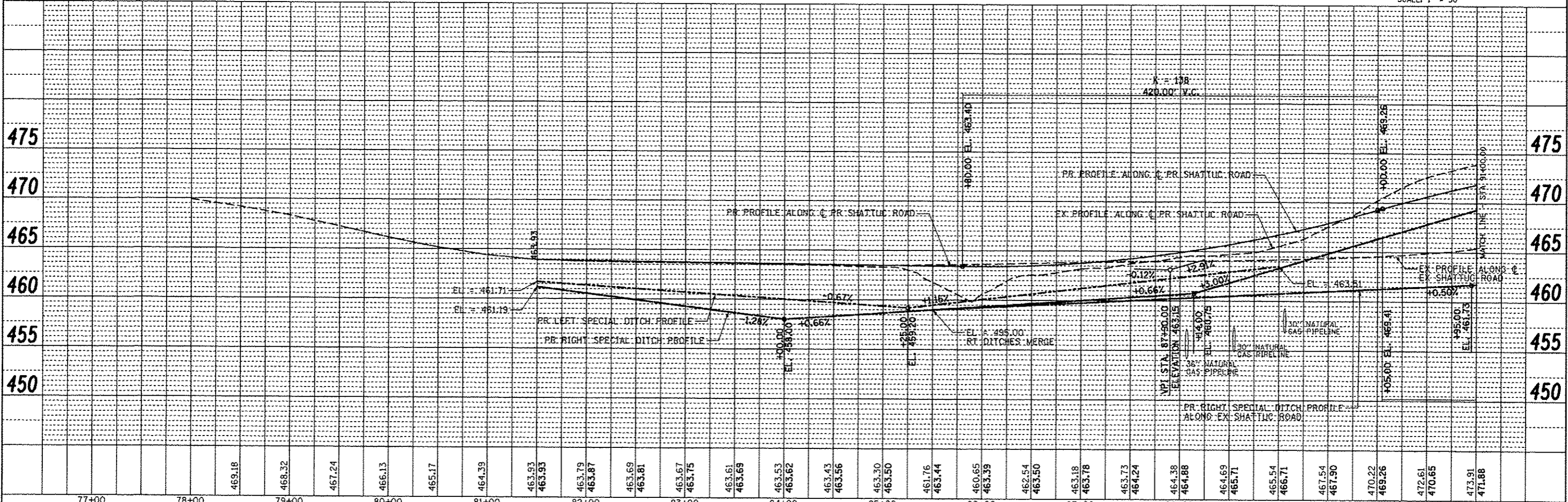
SPUR PROPOSED CURVE C-S-01
 PI STA. = 11+70.23
 $\Delta = 60^\circ 10' 13''$ (LT)
 $D = 92^\circ 24' 45''$
 $R = 62.00'$
 $T = 35.92'$
 $L = 65.11'$
 $E = 9.65'$
 P.C. STA. = 11+34.31
 P.T. STA. = 11+99.42

PROP. CURVE C-01
 PI STA. = 87+94.68
 $\Delta = 38^\circ 17' 38''$ (LT)
 $D = 4^\circ 16' 33''$
 $R = 1,340.00'$
 $T = 465.25'$
 $L = 895.60'$
 $E = 78.47'$
 $\theta = 6\%$
 T.R. = 40'
 S.E. RUN = 160'
 P.C. STA. = 83+29.43
 P.T. STA. = 92+25.03

PLAN	DATE
BY	
NOTED	
FILE NAME	
NO.	



PROFILE	DATE
BY	
NOTED	
FILE NAME	
NO.	



FILE NAME =	USER NAME = bergmd	DESIGNED - DJO	REVISED -	STATE OF ILLINOIS		SHATTUC ROAD REALIGNMENT		F.A.P. RTE. = 327	SECTION = 21-1-1,27-1	COUNTY = CLINTON	TOTAL SHEETS = 96	SHEET NO. = 15
al:\pwork\spidat\bergmd\0309075\007605	ah1-p\inp\l.dgn	DRAWN - DMW	REVISED -	DEPARTMENT OF TRANSPORTATION		PLAN AND PROFILE		SCALE: 1"=50'	SHEET NO. 1 OF 4 SHEETS	STA. 80+00 TO STA. 91+00	CONTRACT NO. 76053	
PLOT SCALE = 1/80,000" = 1/8"	CHECKED -	DATE -	REVISED -									ILLINOIS FED. AID PROJECT