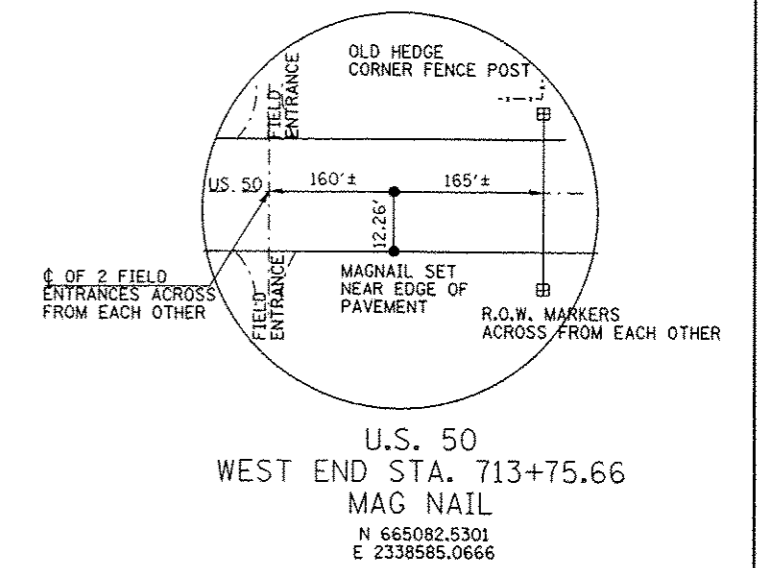
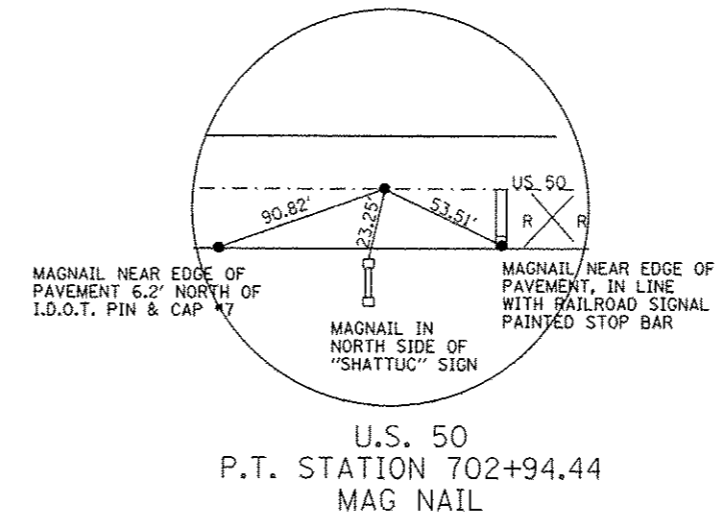
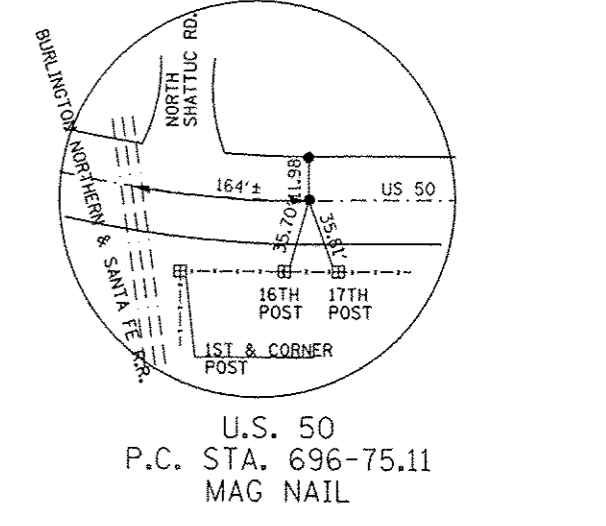
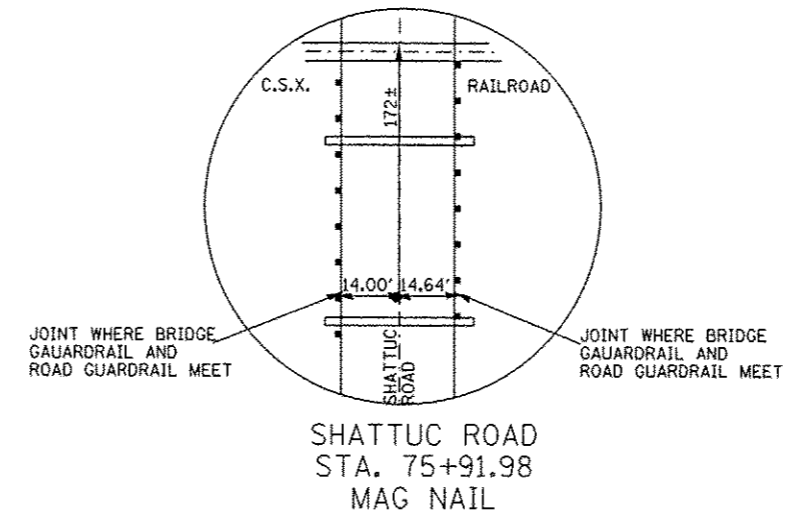
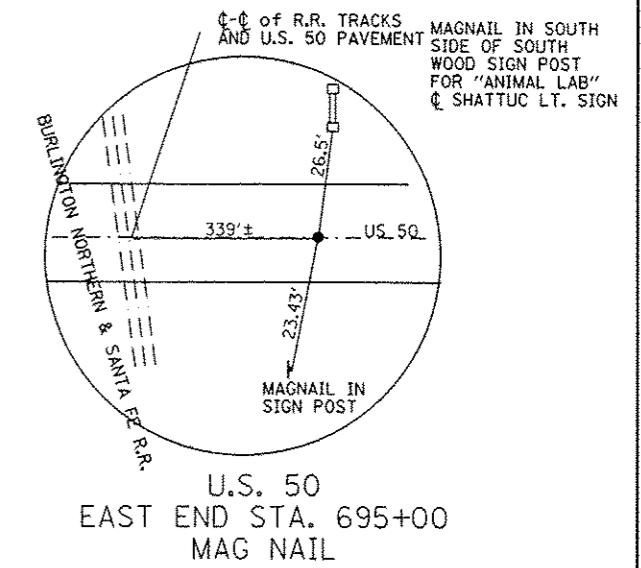
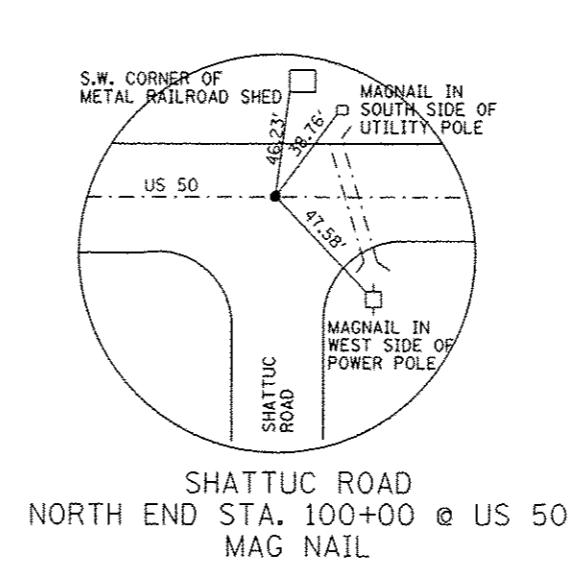


NGS BM "F154" FROM NGS DATA SHEET JB0832; DISK STAMPED "F154 1949" SET IN TOP OF CONCRETE MONUMENT. UPDATED LOCATION: 73.1' WEST OF THE WEST RAIL OF BURLINGTON NORTHERN AND SANTE FE RAILROAD TRACKS, 112' SOUTH OF SANDOVAL ROAD (COUNTY ROAD 1300N), 795' EAST OF SHATTUC ROAD (COUNTY ROAD 5/COUNTY ROAD 1784) AND 1' EAST OF 4' TALL METAL WITNESS POST, IN THE SOUTHWEST AREA OF SHATTUC, ILLINOIS. PUBLISHED NAVD88 ADJUSTED ELEVATION = 475.68'.

TBM-21 "+" SHAPE METAL PROTRUDING OUT OF THE TOP OF THE SOUTHWEST CONCRETE WINGWALL FOR A 125' LONG CSXT RAILROAD BRIDGE OVER LOST CREEK, 75.2' EAST OF SHATTUC ROAD (COUNTY ROAD 5/COUNTY ROAD 1784), 100' SOUTH OF FRONT STREET, 416' NORTH OF SANDOVAL ROAD (COUNTY ROAD 1300N) AND APPROXIMATELY 0.4 MILE SOUTH OF US ROUTE 50, ON THE WEST SIDE OF SHATTUC, ILLINOIS. MEASURED ELEVATION = 468.604.

TBM-22 RAILROAD SPIKE, 1.5' ABOVE GROUND, IN THE WEST SIDE OF A POWER POLE WITH STREET LIGHT, IN THE SOUTHWEST CORNER OF THE TEE INTERSECTION OF US ROUTE 50 AND SHATTUC ROAD (COUNTY ROAD 5/COUNTY ROAD 1784), 35.1' WEST OF THE WEST RAIL OF THE BURLINGTON NORTHERN AND SANTE FE RAILROAD TRACKS AND 12 MILES WEST OF I-57. MEASURED ELEVATION = 480.406'.

TBM-23 CHISELED SQAURE CENTERED ON TOP OF A CONCRETE AND BRICK HEADWALL OVER THE EAST END OF A 24" DIAMETER CLAY CULVERT PIPE AT A FIELD ENTRANCE ON THE SOUTH SIDE OF US 50, APPROXIMATELY 1640' WEST OF SHATTUC ROAD (COUNTY ROAD 5/COUNTY ROAD 1784) AND 12.1 MILES WEST OF I-57. MEASURED ELEVATION = 473.827.



FILE NAME =	USER NAME = bergmd	DESIGNED -	REVISED -
c:\pwork\puidat\bergmd\0160007\0076033-ahs-plan.dgn		DRAWN -	REVISED -
PLOT SCALE = 100.0000' / 1"		CHECKED -	REVISED -
PLOT DATE = 6/15/2012		DATE -	REVISED -

**STATE OF ILLINOIS  
DEPARTMENT OF TRANSPORTATION**

**TIE POINTS AND BENCHMARKS**

SCALE: SHEET OF SHEETS STA. TO STA.

F.A.P. RTE.	SECTION	COUNTY	TOTAL SHEETS	SHEET NO.
327	21-1-1,27-1	CLINTON	96	14
CONTRACT NO. 76D53				
ILLINOIS FED. AID PROJECT				