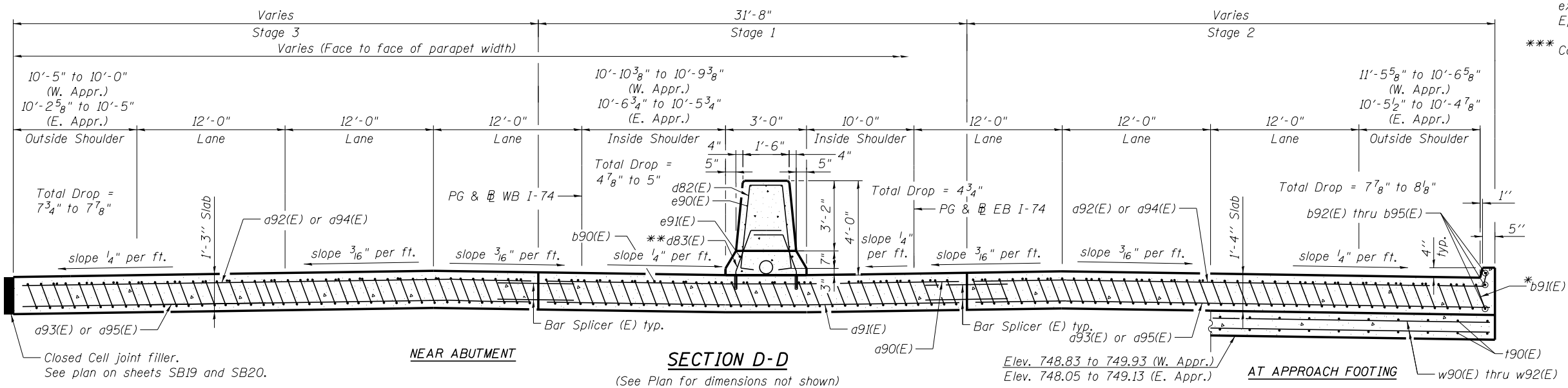


NOTES:

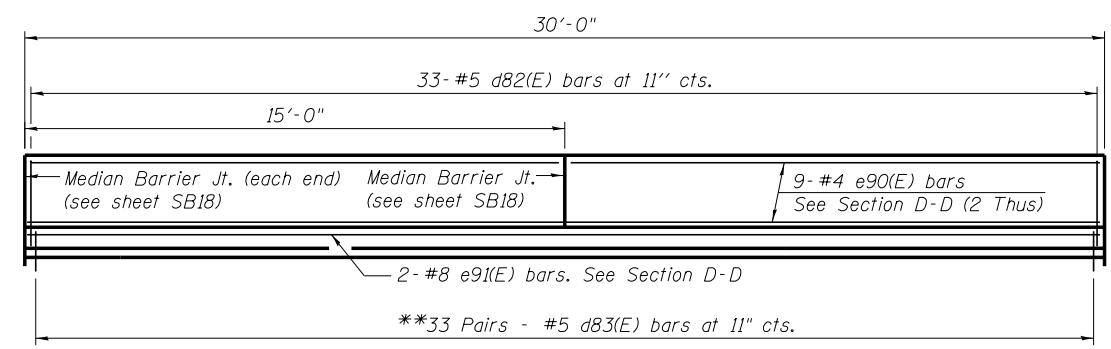
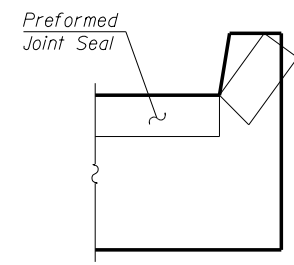
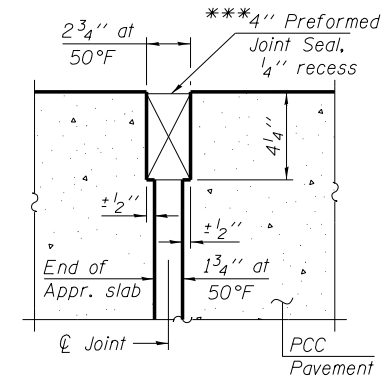
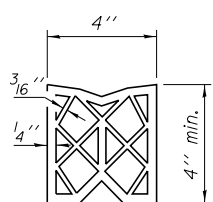
1. Approach slab and parapet concrete shall be paid for as Concrete Superstructure.
2. Approach footing concrete shall be paid for as Concrete Structures.
3. Reinforcement shall be paid for as Reinforcement Bars, Epoxy Coated.
4. For d82(E) and d83(E) bar details, see sheet SB17.
5. For v80(E) bar details, see sheet SB37.
6. The approach footing maximum applied service bearing pressure (Qmax) = 2.0 ksf.
7. For bar splicer details, see sheet SB53.
8. Cost of excavation for approach footing included with Concrete Structures.
9. For select backfill and drainage treatment details, see sheet SB2.
10. For additional median barrier details, see sheets SB18.

* Tilt #9 b91(E) bars as required to maintain clearance.
 *** Core and set #5 d83(E) bars according to Article 509.06 of the Standard Specifications. Cored holes shall be roughened or scored per manufacturer's recommendations. Maximum depth of hole shall not exceed 6". Cost to be included in Reinforcement Bars, Epoxy Coated.
 *** Cost included with Concrete Superstructure.

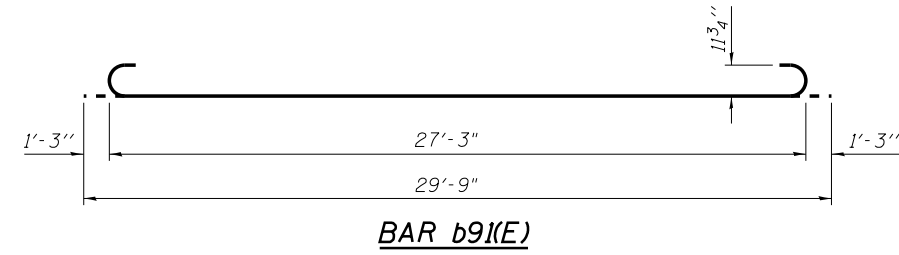
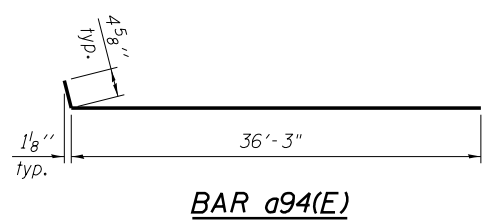


**TWO APPROACHES
BILL OF MATERIAL**

Bar	No.	Size	Length	Shape
a90(E)	100	#4	26'-6"	
a91(E)	184	#5	26'-9"	
a92(E)	100	#4	36'-3"	
a93(E)	184	#5	36'-6"	
a94(E)	100	#4	36'-8"	
a95(E)	184	#5	36'-0"	
b90(E)	192	#4	29'-8"	
b91(E)	566	#9	29'-9"	
b92(E)	3	#4	13'-7"	
b93(E)	3	#4	13'-10"	
b94(E)	3	#4	14'-11"	
b95(E)	3	#4	12'-10"	
d82(E)	66	#5	9'-3"	
d83(E)	132	#5	3'-5"	
e90(E)	36	#4	14'-8"	
e91(E)	4	#8	29'-8"	
t90(E)	486	#4	15'-8"	
w90(E)	160	#5	26'-9"	
w91(E)	160	#5	36'-6"	
w92(E)	160	#5	35'-9"	
Concrete Superstructure		Cu. Yd.	352.9	
Concrete Structures		Cu. Yd.	116.5	
Reinforcement Bars, Epoxy Coated		Pound	87,340	



MINIMUM BAR LAP
 (Approach Slab)
 #4 bar = 2'-7"
 #5 bar = 3'-3"



benesch
 engineers · scientists · planners
 Alfred Benesch & Company
 205 North Michigan Avenue, Suite 2400
 Chicago, Illinois 60601
 312-565-0450 Job No. 10056

FILE NAME =	USER NAME = mbecker	DESIGNED - MFB	REVISED -
0900167.68620.21.apslb3.dgn	PLOT SCALE =	CHECKED - MRB	REVISED -
	PLOT DATE = 7/16/2012	DRAWN - PRT	REVISED -
		CHECKED - AAY	REVISED -

**STATE OF ILLINOIS
DEPARTMENT OF TRANSPORTATION**

**BRIDGE APPROACH SLAB DETAILS 3 OF 3
STRUCTURE NO. 090-0167**

F.A.I. RTE.	SECTION	COUNTY	TOTAL SHEETS	SHEET NO.
74	90-[14R;14HB-4;14,14HV]BR	TAZEWELL	2433	1932
CONTRACT NO. 68620				
ILLINOIS FED. AID PROJECT				

SHEET NO. SB21 OF SB65 SHEETS

x:\10000s\10056\engineer-ing-documents\phase-1\174over\Jefferson\Final\0900167.68620.21.apslb3.dgn

11:08:31 AM

7/16/2012