

FAU RTE.	SECTION	COUNTY	TOTAL SHEETS	SHEET NO.
379	(118)N-1	KENDALL	4	1
		ILLINOIS	CONTRACT NO. 66C47	

D93-071-12

- INDEX OF SHEETS
1. COVER SHEET
  2. GENERAL NOTES, STANDARDS, SUMMARY, AND SIGNATURE BLOCK
  3. TRAFFIC SIGNAL PLAN
  4. CABLE PLAN

STATE OF ILLINOIS  
DEPARTMENT OF TRANSPORTATION  
DIVISION OF HIGHWAYS

**PROPOSED  
HIGHWAY PLANS**

FAU ROUTE 379 (IL 126)  
SECTION (118)N-1  
PROJECT : HSIP-0379(004)  
ADVANCE WARNING FLASHERS AT INTERSECTION  
KENDALL COUNTY

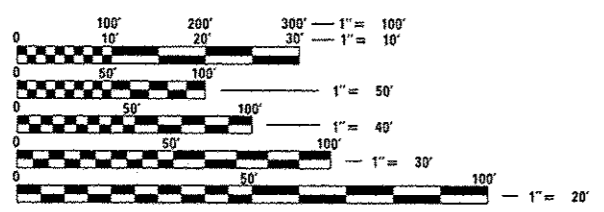
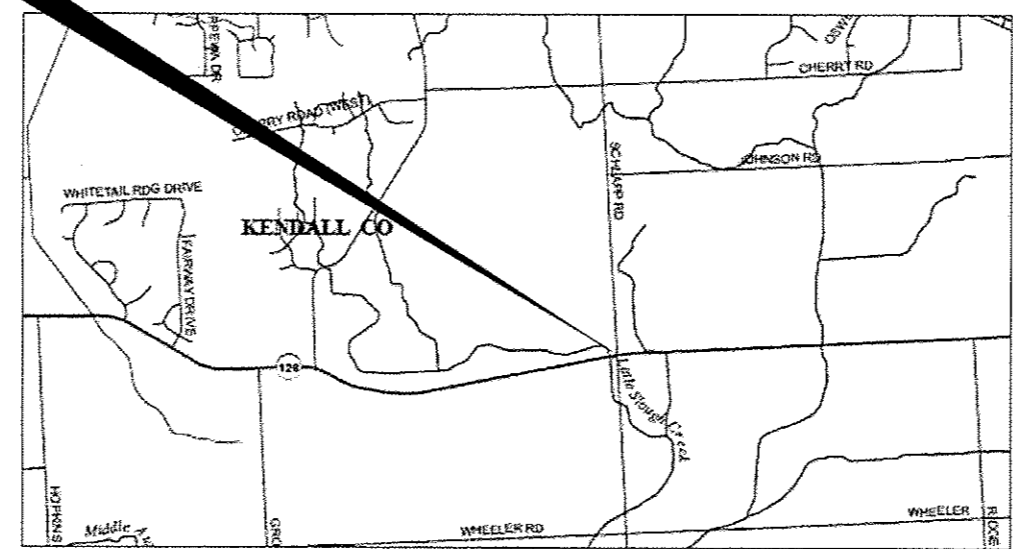
C-93-149-12



IL 126 - MINOR ARTERIAL  
SCHLAPP RD. - LOCAL ROAD

	ADT	SU	MU	PV
IL 126	6650	3.53%	6.39%	90.08%
SCHLAPP RD	1600	1.54%		98.46%

PROJECT LOCATION  
INTERSECTION OF IL 126  
& SCHLAPP RD.



FULL SIZE PLANS HAVE BEEN PREPARED USING STANDARD ENGINEERING SCALES. REDUCED SIZED PLANS WILL NOT CONFORM TO STANDARD SCALES. IN MAKING MEASUREMENTS ON REDUCED PLANS, THE ABOVE SCALES MAY BE USED.

J.U.L.I.E.  
JOINT UTILITY LOCATION INFORMATION FOR EXCAVATION  
1-800-892-0123  
OR 811

PROJECT ENGINEER: GREG LEE  
UNIT CHIEF: SCOTT A. FERGUSON  
DISTRICT 3 NO. (815) 434-6131  
CONTRACT NO. 66C47

GROSS & NET LENGTH = INTERSECTION IMPROVEMENT

STATE OF ILLINOIS  
DEPARTMENT OF TRANSPORTATION  
DIVISION OF HIGHWAYS

SUBMITTED 8-6 20 12  
*Eric S. Therkildsen*  
DEPUTY DIRECTOR OF HIGHWAYS, REGION ENGINEER

August 17, 2012  
*John D. Baranzelli, P.E.*  
acting ENGINEER OF DESIGN AND ENVIRONMENT

August 17, 2012  
*William R. Freyer*  
acting DIRECTOR OF HIGHWAYS, CHIEF ENGINEER

**PRINTED BY THE AUTHORITY  
OF THE STATE OF ILLINOIS**

GENERAL NOTES

- THE CONTRACTOR'S ATTENTION IS DIRECTED TO THE PRESENCE OF DEPARTMENT-OWNED UNDERGROUND ELECTRICAL CABLE WITHIN THE LIMITS OF THE PROPOSED IMPROVEMENTS. THE CONTRACTOR SHALL REQUEST THE ILLINOIS DEPARTMENT OF TRANSPORTATION IN OTTAWA (815-434-8417) TO LOCATE THE UNDERGROUND FACILITIES, PROVIDING A MINIMUM OF 72 HOURS NOTICE. THE DEPARTMENT IS NOT A MEMBER OF THE JOINT UTILITY LOCATING INFORMATION FOR EXCAVATORS (JULIE) SYSTEM.
- ALL DAMAGE TO DEPARTMENT OWNED UNDERGROUND FACILITIES, CAUSED BY THE CONTRACTOR SHALL BE REPAIRED TO THE SATISFACTION OF THE DEPARTMENT AT THE CONTRACTOR'S EXPENSE. THIS SHALL INCLUDE ALL TEMPORARY REPAIRS REQUIRED TO KEEP THE FACILITY OPERATIONAL WHILE MATERIAL IS BEING OBTAINED TO MAKE PERMANENT REPAIRS. SPLICING OF ELECTRIC CABLE SHALL NOT BE ALLOWED. ELECTRIC CABLE SHALL BE REPLACED FROM POLE TO POLE OR CONTROLLER.
- MEMBERS OF JULIE KNOWN TO BE WITHIN THE LIMITS OF THE IMPROVEMENT ARE: UNKNOWN
- ALL TRAFFIC SIGNAL HEADS SHALL BE 12" UNLESS OTHERWISE NOTED.
- ALL CONDUIT IN TRENCH SHALL BE P.V.C. ALL CONDUIT PUSHED MAY BE GALVANIZED STEEL OR P.V.C. CONDUIT ATTACHED TO STRUCTURES SHALL BE GALVANIZED STEEL.
- A 1/4" DIAMETER CONTINUOUS NYLON ROPE SHALL BE FURNISHED AND LEFT IN PLACE IN ALL CONDUITS BETWEEN HANDHOLES AND FOUNDATIONS OR CONTROLLER AS INCIDENTAL TO THE RESPECTIVE CONDUIT PAY ITEM.
- THE CONTRACTOR SHALL ARRANGE FOR A FACTORY OR SUPPLIER REPRESENTATIVE TO BE PRESENT AT THE INTERSECTION WHEN THE SIGNAL IS TURNED ON, INCIDENTAL TO THE CONTROLLER PAY ITEM.
- THE DEPARTMENT OF TRANSPORTATION (815-434-8505) SHALL BE NOTIFIED AT LEAST 72 HOURS PRIOR TO THE TURNING ON OF THE CONTROLLER UNIT.
- NO ADDITIONAL COMPENSATION WILL BE ALLOWED FOR PLACING CONDUIT AT GREATER THAN 2 FEET MINIMUM DEPTH TO AVOID OBSTACLES SUCH AS UNDERGROUND UTILITIES.
- THE ELECTRICAL CONDUCTORS FOR ALL TRAFFIC SIGNAL HEADS SHALL BE SOLID, SOFT COPPER.
- THE CONTRACTOR IS RESPONSIBLE FOR THE COST OF UNCOVERING OR HAND DIGGING AROUND UTILITIES, AS NECESSARY, INCIDENTAL TO THE CONDUIT PAY ITEM.
- ALL THREADS OF BOLTS USED IN TRAFFIC COMPONENT ASSEMBLIES SHALL BE COATED WITH A NON-LEAD BASED ANTI-SEIZE COMPOUND, SIMILAR TO LEAD PLATE, PRIOR TO ASSEMBLY.
- BACK PLATES MUST BE POLYCARBONATE WITH A DEEP BACK FLANGE.
- THE CONTRACTOR SHALL PROVIDE 3 FEET SLACK CABLE IN EACH TRAFFIC SIGNAL STRUCTURE: MAST ARM, POST, CONTROLLER. THE SLACK, WHICH IS IN ADDITION TO THE VERTICAL LENGTH OF CABLE DEFINED IN THE SPECIFICATIONS, SHALL BE PAID FOR AT THE CONTRACT UNIT PRICE FOR EACH CABLE.
- ALL GROUNDING MATERIALS FOR TRAFFIC SIGNAL CONCRETE FOUNDATIONS SHALL REFER TO SECTION 807 IN THE STANDARD SPECIFICATIONS FOR ROAD AND BRIDGE CONSTRUCTION ADOPTED JANUARY 1, 2012.
- SIGNAL AND PEDESTRIAN HEADS SHALL HAVE BLACK HOUSING AND BLACK POLYCARBONATE BRACKETS.
- SEEDING SHALL NOT BE PERMITTED AT ANY TIME WHEN THE GROUND IS FROZEN, WET, OR IN AN UNTILLABLE CONDITION. LOCATIONS TO BE SEEDDED WILL BE DETERMINED BY THE ENGINEER.
- THE FINISHED EARTHWORK SHALL HAVE A VEGETATION SUSTAINING SOIL COVERING THE TOP FOUR INCHES IN AREAS TO BE SEEDDED OR SODDED. THE VEGETATION SUSTAINING SOIL REQUIRED WILL NOT BE PAID FOR SEPARATELY BUT SHALL BE INCLUDED IN THE COST OF ASSOCIATED TRAFFIC SIGNAL PAY ITEMS.
- ABANDONED UNDERGROUND UTILITIES THAT CONFLICT WITH CONSTRUCTION SHALL BE DISPOSED OF OUTSIDE THE LIMITS OF THE RIGHT OF WAY ACCORDING TO ARTICLE 202.03 OF THE STANDARD SPECIFICATIONS AND AS DIRECTED BY THE ENGINEER. THIS WORK WILL NOT BE PAID FOR SEPARATELY, BUT SHALL BE INCLUDED IN THE COST OF THE ASSOCIATED TRAFFIC SIGNAL PAY ITEMS.
- ANY REFERENCE TO A STANDARD IN THESE PLANS SHALL BE INTERPRETED TO MEAN THE EDITION AS INDICATED BY THE SUBNUMBER SHOWN IN THE LIST OF STANDARDS IN THESE PLANS.

COMMITMENTS

NONE

APPROVED PROVIDERS FOR LED SIGNAL MODULES ARE:

GENERAL ELECTRIC  
DIALIGHT

SEE TABLE FOR PART NUMBERS

DIALIGHT

	PART NO.
RED BALL	433-1210-003XL 433-1270-003XL
YELLOW BALL	433-3230-901XL 433-3270-901XL

GENERAL ELECTRIC

	PART NO.
RED BALL	DR6-RTFB-77A DR6-RCFB-77A
YELLOW BALL	DR6-YTFB-77A DR6-YCFB-77A

LIST OF ILLINOIS DOT HIGHWAY STANDARDS

000001-06	STANDARD SYMBOLS, ABBREVIATIONS AND PATTERNS
001006	DECIMAL OF AN INCH AND OF A FOOT
701001-02	OFF-ROAD OPERATIONS 2L, 2W, MORE THAN 15' (4.5 m) AWAY
701006-03	OFF-ROAD OPERATIONS 2L, 2W, 15' (4.5 m) TO 24" (600 mm) FROM PAVEMENT EDGE
701201-04	LANE CLOSURE, 2L, 2W, DAY ONLY, FOR SPEEDS **8" 45 MPH
701901-02	TRAFFIC CONTROL DEVICES
805001-01	ELECTRICAL SERVICE INSTALLATION DETAILS
814001-02	HANDHOLES
873001-02	TRAFFIC SIGNAL GROUNDING & BONDING
880001-01	SPAN WIRE MOUNTED SIGNALS AND FLASHING BEACON INSTALLATION

90% FED.  
10% STATE

SUMMARY OF QUANTITIES

CODE NO.	ITEM	UNIT	CONSTR. CODE
			0021
67100100	MOBILIZATION	L SUM	1
70100450	TRAFFIC CONTROL AND PROTECTION, STANDARD 701201	L SUM	1
80500300	SERVICE INSTALLATION, TYPE C	EACH	3
81028200	UNDERGROUND CONDUIT, GALVANIZED STEEL, 2" DIA.	FOOT	205
81028340	UNDERGROUND CONDUIT, PVC, 1 1/2" DIA.	FOOT	1845
81028350	UNDERGROUND CONDUIT, PVC, 2" DIA.	FOOT	165
81028370	UNDERGROUND CONDUIT, PVC, 3" DIA.	FOOT	10
81100500	CONDUIT ATTACHED TO STRUCTURE, 1 1/2" DIA., GALVANIZED STEEL	FOOT	99
81400700	HANDHOLE, PORTLAND CEMENT CONCRETE	EACH	9
83057010	LIGHT POLE, WOOD, 30 FOOT, CLASS 4	EACH	3
85800100	FLASHER CONTROLLER	EACH	3
87301215	ELECTRIC CABLE IN CONDUIT, SIGNAL NO. 14 2C	FOOT	2641
87301805	ELECTRIC CABLE IN CONDUIT, SERVICE, NO. 6 2 C	FOOT	20
87301900	ELECTRIC CABLE IN CONDUIT, EQUIPMENT GROUNDING CONDUCTOR, NO. 6 1C	FOOT	2641
88040030	SIGNAL HEAD, POLYCARBONATE, LED, 1-FACE, 1-SECTION, POST MOUNTED	EACH	6

STATE OF ILLINOIS  
DEPARTMENT OF TRANSPORTATION  
DISTRICT THREE

PREPARED BY: *Tom Beaulieu*  
DISTRICT STUDIES & PLANS ENGINEER

DATE: 8-6-12

EXAMINED BY: *Wayne L. Phillips*  
DISTRICT CONSTRUCTION ENGINEER

*Wayne L. Phillips*  
DISTRICT MATERIALS ENGINEER

*James G. Hester*  
DISTRICT OPERATIONS ENGINEER

FILE NAME: c:\work\p\dot\ferguson\0312379\036647\strcovar.dgn	USER NAME: ferguson	DESIGNED: -	REVISED: -	STATE OF ILLINOIS DEPARTMENT OF TRANSPORTATION	GENERAL NOTES, STANDARDS, SUMMARY & SIGNATURE BLOCK	F.A.U. RTE.:	SECTION:	COUNTY:	TOTAL SHEETS:	SHEET NO.:	
		DRAWN: -	REVISED: -			379	(118)N-1	KENDALL	4	2	
		CHECKED: -	REVISED: -			CONTRACT NO. 66C47					
		DATE: -	REVISED: -			ILLINOIS FED. AID PROJECT					
SCALE: SHEET OF SHEETS STA. TO STA.											

**CONSTRUCTION NOTES:**

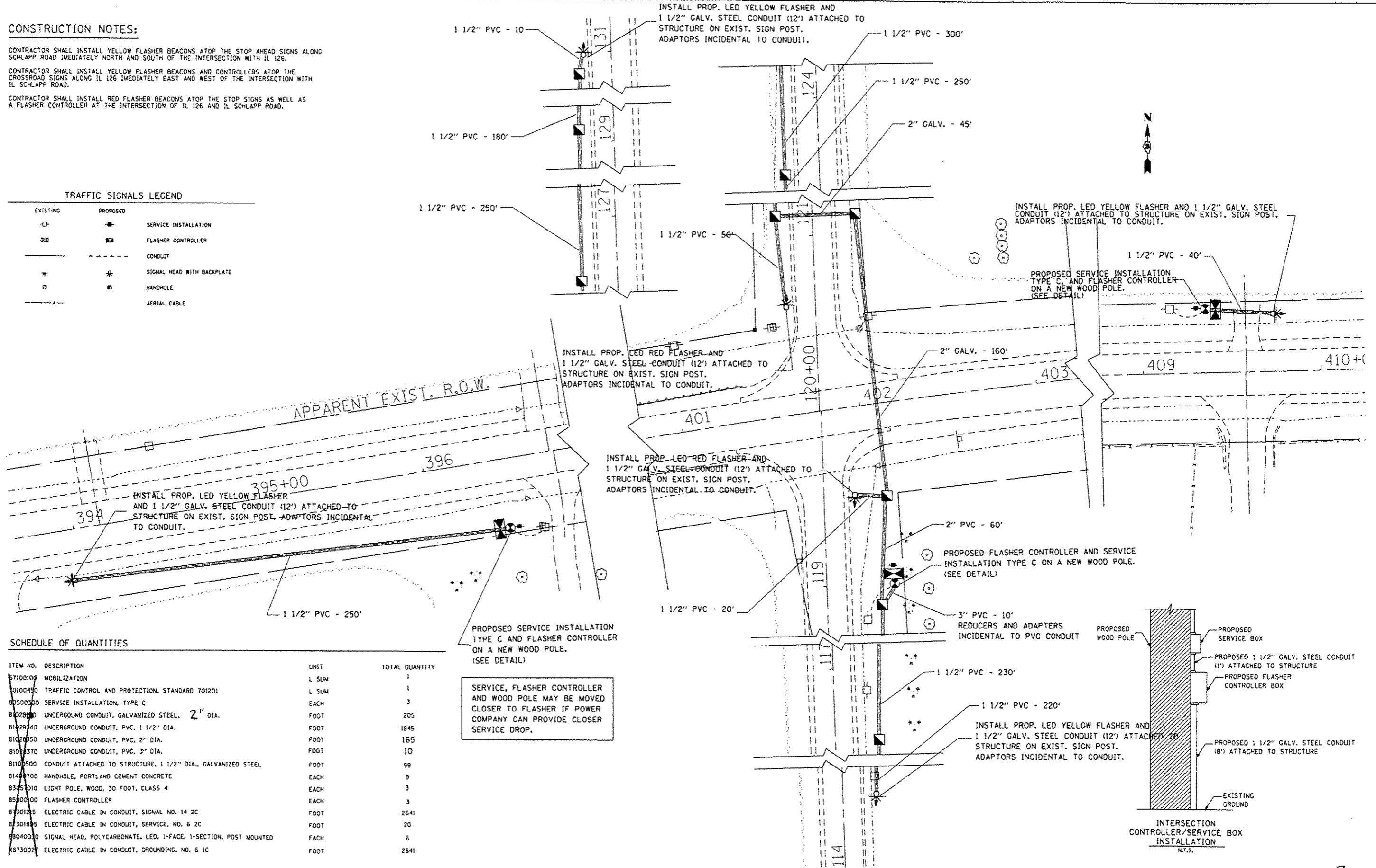
CONTRACTOR SHALL INSTALL YELLOW FLASHER BEACONS ATOP THE STOP AHEAD SIGNS ALONG SCHLAPP ROAD IMMEDIATELY NORTH AND SOUTH OF THE INTERSECTION WITH IL 126.

CONTRACTOR SHALL INSTALL YELLOW FLASHER BEACONS AND CONTROLLERS ATOP THE CROSSROAD SIGNS ALONG IL 126 IMMEDIATELY EAST AND WEST OF THE INTERSECTION WITH IL SCHLAPP ROAD.

CONTRACTOR SHALL INSTALL RED FLASHER BEACONS ATOP THE STOP SIGNS AS WELL AS A FLASHER CONTROLLER AT THE INTERSECTION OF IL 126 AND IL SCHLAPP ROAD.

**TRAFFIC SIGNALS LEGEND**

EXISTING	PROPOSED	
		SERVICE INSTALLATION
		FLASHER CONTROLLER
		CONDUIT
		SIGNAL HEAD WITH BACKPLATE
		HANDHOLE
		AERIAL CABLE

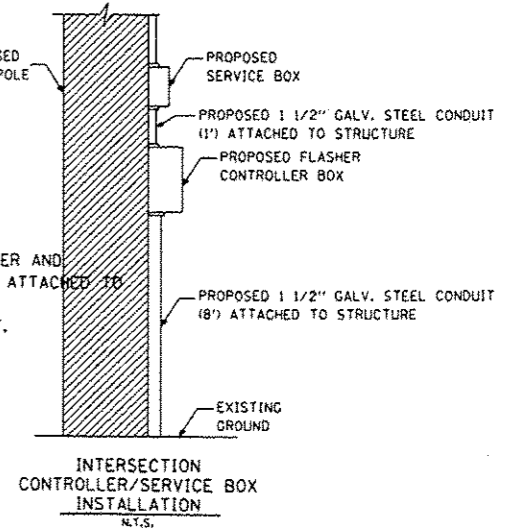


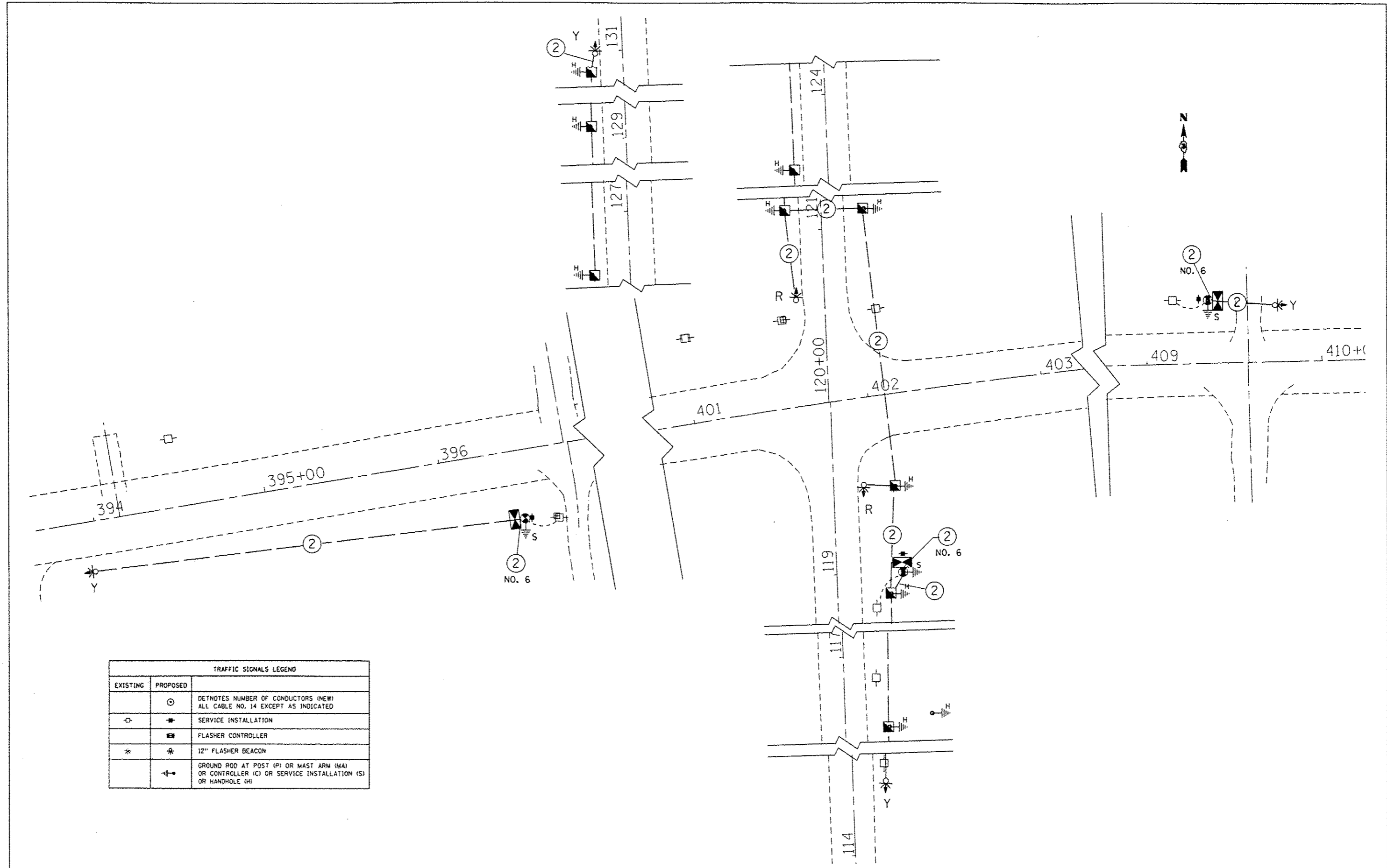
**SCHEDULE OF QUANTITIES**

ITEM NO.	DESCRIPTION	UNIT	TOTAL QUANTITY
07100100	MOBILIZATION	L SUM	1
0100450	TRAFFIC CONTROL AND PROTECTION, STANDARD 701201	L SUM	1
05500300	SERVICE INSTALLATION, TYPE C	EACH	3
81020100	UNDERGROUND CONDUIT, GALVANIZED STEEL, 2" DIA.	FOOT	205
81028140	UNDERGROUND CONDUIT, PVC, 1 1/2" DIA.	FOOT	1845
81028350	UNDERGROUND CONDUIT, PVC, 2" DIA.	FOOT	165
81028370	UNDERGROUND CONDUIT, PVC, 3" DIA.	FOOT	10
81101500	CONDUIT ATTACHED TO STRUCTURE, 1 1/2" DIA., GALVANIZED STEEL	FOOT	99
81441700	HANDHOLE, PORTLAND CEMENT CONCRETE	EACH	9
83051010	LIGHT POLE, WOOD, 30 FOOT, CLASS 4	EACH	3
05500100	FLASHER CONTROLLER	EACH	3
87301215	ELECTRIC CABLE IN CONDUIT, SIGNAL NO. 14 2C	FOOT	2641
87301815	ELECTRIC CABLE IN CONDUIT, SERVICE, NO. 6 2C	FOOT	20
88040010	SIGNAL HEAD, POLYCARBONATE, LED, 1-FACE, 1-SECTION, POST MOUNTED	EACH	6
87300210	ELECTRIC CABLE IN CONDUIT, GROUNDING, NO. 6 1C	FOOT	2641

PROPOSED SERVICE INSTALLATION TYPE C AND FLASHER CONTROLLER ON A NEW WOOD POLE. (SEE DETAIL)

SERVICE, FLASHER CONTROLLER AND WOOD POLE MAY BE MOVED CLOSER TO FLASHER IF POWER COMPANY CAN PROVIDE CLOSER SERVICE DROP.





TRAFFIC SIGNALS LEGEND		
EXISTING	PROPOSED	
	⊙	DETNOTES NUMBER OF CONDUCTORS (NEW) ALL CABLE NO. 14 EXCEPT AS INDICATED
□	→	SERVICE INSTALLATION
	■	FLASHER CONTROLLER
*	⊛	12" FLASHER BEACON
	⚡	GROUND ROD AT POST (P) OR MAST ARM (MA) OR CONTROLLER (C) OR SERVICE INSTALLATION (S) OR HANDHOLE (H)

FILE NAME *	USER NAME * Ferguson	DESIGNED -	REVISED -
c:\pwworkspace\ferguson\0312379\06647-ahs\data\1a.dgn		DRAWN -	REVISED -
	PLOT SCALE = 50,000 / 1"	CHECKED -	REVISED -
	PLOT DATE = 6/29/2012	DATE -	REVISED -

**STATE OF ILLINOIS  
DEPARTMENT OF TRANSPORTATION**

**CABLE PLAN IL 126 & SCHLAPP RD.**

SCALE: SHEET NO. OF SHEETS STA. TO STA.

F.A.U. RTE.	SECTION (1101-)	COUNTY	TOTAL SHEETS	SHEET NO.
		KENDALL	4	4
ILLINOIS FED. AID PROJECT				