

ROUTE MARKERS

FOR U.S. ROUTES
M1-40-2424

FOR ILLINOIS ROUTES
M1-50-2424

R.R. UNMARKED ROUTES
SPECIAL 24" x 18" VARIABLE
4" BLACK LETTERS ON WHITE
REFLECTIVE BACKGROUND

ARROWS SIGNS

M5-1L-2115

M5-1R-2115

M6-1-2115

M6-1-2115

M6-3-2115

CARDINAL DIRECTION & DETOUR SIGNS

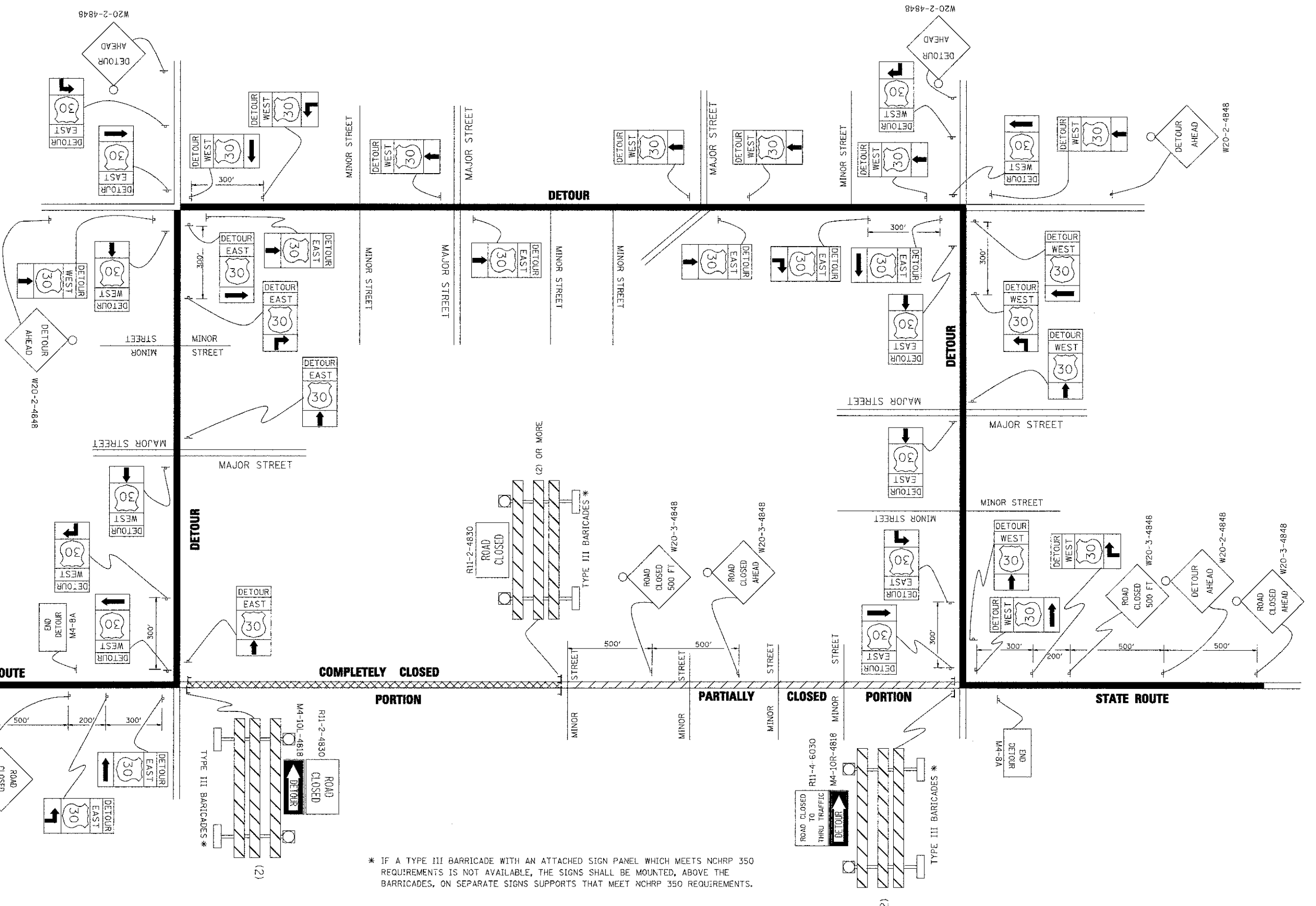
NORTH M3-1-2412

EAST M3-2-2412

SOUTH M3-3-2412

WEST M3-4-2412

DETOUR M4-8-2412



* IF A TYPE III BARRICADE WITH AN ATTACHED SIGN PANEL WHICH MEETS NCHRP 350 REQUIREMENTS IS NOT AVAILABLE, THE SIGNS SHALL BE MOUNTED, ABOVE THE BARRICADES, ON SEPARATE SIGNS SUPPORTS THAT MEET NCHRP 350 REQUIREMENTS.

FILE NAME =	USER NAME = drivakasn	DESIGNED -	REVISED - 10-18-02
as:\pw\work\PM\DOT\DRIVAKAS\N\108315\21.dgn		DRAWN -	REVISED - R. BORO 09-14-09
PLOT SCALE = 49.9999 / IN.		CHECKED -	REVISED -
PLOT DATE = 9/14/2009		DATE -	REVISED -

STATE OF ILLINOIS
DEPARTMENT OF TRANSPORTATION

SCALE: NONE	SHEET NO. 24 OF 26 SHEETS	STA.	TO STA.
-------------	---------------------------	------	---------

F.A.U. RATE	SECTION	COUNTY	TOTAL SHEETS	SHEET NO.
0286	12-00059-00-RS	WILL	26	24
TC-21			CONTRACT NO. 63727	
FED. ROAD DIST. NO. 1 ILLINOIS FED. AID PROJECT M-4003(021)				