

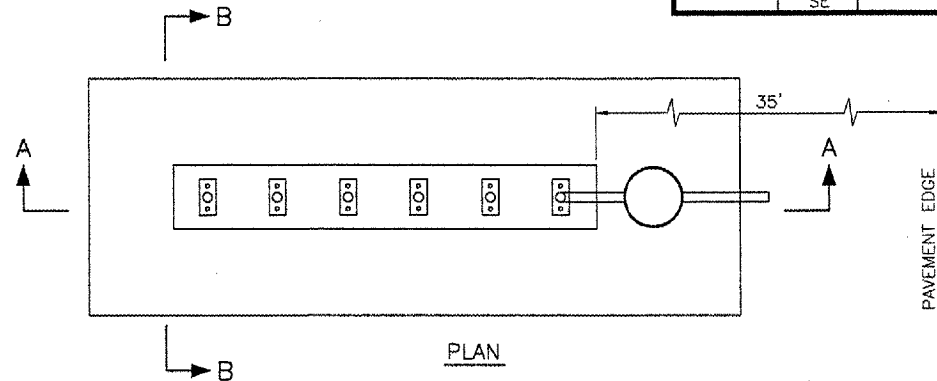
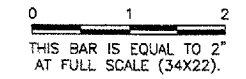
SIGNAGE SCHEDULE

CA004 K:\Springfield\0703502_SPI_TTY_F\Draw\Sheets
 FILE: AIRFIELD SIGNAGE DETAIL.dwg
 UPDATE BY: Dave Allen
 PLOT DATE: 8/3/2007 4:40 PM
 SPI_LOGO

SIGN #	SIDE	NEW SIGN LEGEND	WHITE WITH BLACK OUTLINE ON RED BACKGROUND	BLACK LEGEND ON YELLOW BACKGROUND	YELLOW LEGEND ON BLACK BACKGROUND	# OF DIGITS	NEW POWER CIRCUIT	NOTES
1	NE	F →		F →		2	TTY F	NEW SIGN
2	SW	← F		← F		2	TTY F	NEW SIGN
3	NW	F 22-4	22-4		F	5	RWY 4/22	NEW SIGN
	SE	← F		← F	F			
4	NE	← F G		← F	G	3	TTY F	NEW SIGN
	SW	22 ↑		22 ↑				
5	SE	F ← G →		← G →	F	4	TTY F	NEW SIGN
	NW	F			F			
6	SW	G F →		F →	G	3	TTY F	NEW SIGN
	NE	G			G			
7	NW	≡≡≡ A		≡≡≡	A	2	RWY 4/22	REPLACE GUIDANCE SIGN
	SE	A 4	4		A			
8	NW	≡≡≡ H		≡≡≡	H	5	RWY 4/22	REPLACE GUIDANCE SIGN
	SE	H 4-22	4-22		H			
9	NW	≡≡≡ B		≡≡≡	B	5	RWY 4/22	REPLACE GUIDANCE SIGN
	SE	B 4-22	4-22		B			
10	NW	≡≡≡ B 22-4	22-4		B	5	RWY 4/22	REPLACE GUIDANCE SIGN
	SE	≡≡≡ B		≡≡≡	B			
11	NW	≡≡≡ E		≡≡≡	E	5	RWY 4/22	REPLACE GUIDANCE SIGN
	SE	E 4-22	4-22		E			
12	NW	E 22-4	22-4		E	5	RWY 4/22	REPLACE GUIDANCE SIGN
	SE	≡≡≡ 18 ↑		≡≡≡ 18 ↑				
13	NW	≡≡≡ F		≡≡≡	F	5	RWY 4/22	REPLACE GUIDANCE SIGN
	SE	F 4-22	4-22		F			

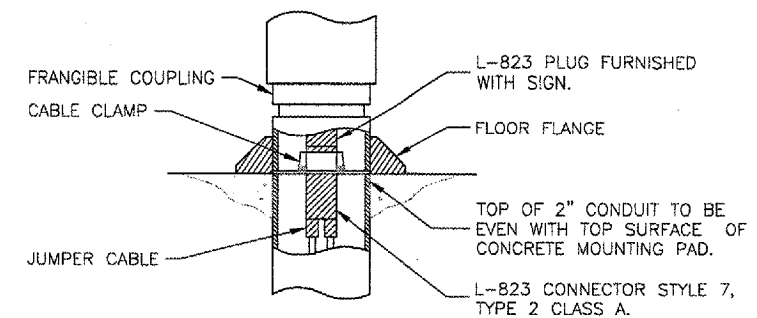
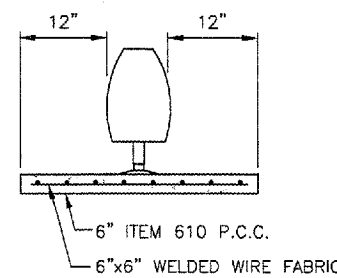
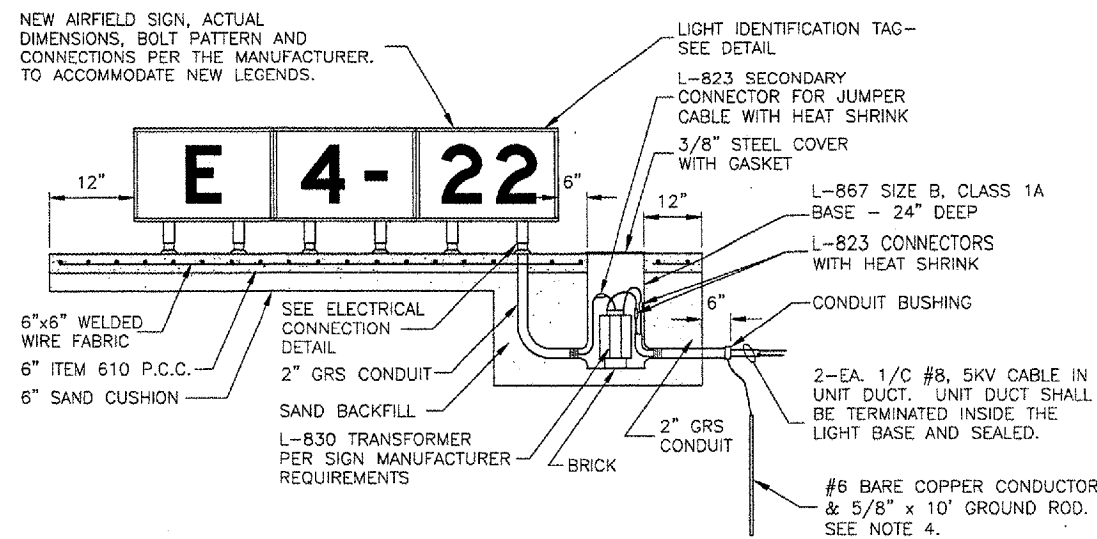
REVISIONS

NUMBER	BY	DATE



AIRFIELD SIGNAGE NOTES

- SIGN SCHEDULE IS SUBJECT TO FAA APPROVAL OF THE SIGNAGE PLAN.
 - CHANGES TO NEW LEGENDS MAY OCCUR SUBJECT TO 1 ABOVE.
 - CONTRACTOR SHALL SUBMIT SHOP DRAWINGS WITH NEW LEGENDS FOR APPROVAL PRIOR TO STARTING MANUFACTURE.
 - EXISTING SIGNS ARE LUMACURVE.
- RUNWAY 4/22 CIRCUIT IS 20.0 A PRI/6.5 A SEC.



ELECTRICAL CONNECTION DETAIL
N.T.S.

SECTION A-A

SECTION B-B

L-858 AIRFIELD SIGN DETAILS

N.T.S.
NOTES

- TRANSFORMER WATTAGE SHALL BE AS REQUIRED BY SIGN MANUFACTURER.
- SIGN LEGEND SHALL BE AS SHOWN IN THE PLANS.
- SIGNS SHALL BE SIZE 2, STYLE 2 OR 3, CLASS 2.
- SEE "NEW BASE MOUNTED EDGE LIGHT" DETAIL FOR GROUNDING DETAILS.



SPRINGFIELD AIRPORT AUTHORITY
ABRAHAM LINCOLN CAPITAL AIRPORT
SPRINGFIELD, ILLINOIS

WIDEN TAXIWAY F

AIRFIELD SIGNAGE DETAILS

© Copyright CMT, Inc.
CMT
 CRAWFORD, MURPHY & TILLY, INC.
 CONSULTING ENGINEERS
 License No. 184-000513



DESIGN BY: RLY
 DRAWN BY: CMT
 CHECKED BY: *RW*
 APPROVED BY: *RW*
 DATE: AUGUST 07, 2007
 JOB No: 07035-02-00

IL PROJ. NO. SPI-3711
 AIP PROJ. NO. 3-17-0096-XX