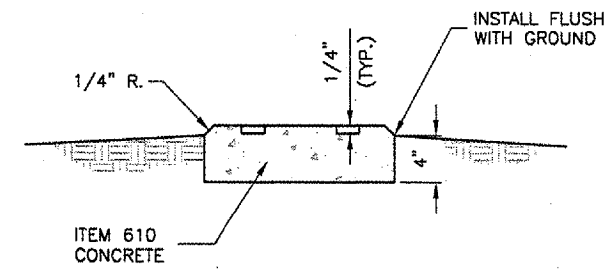
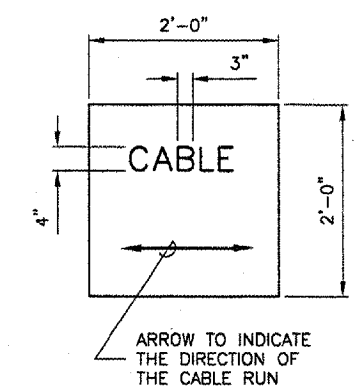
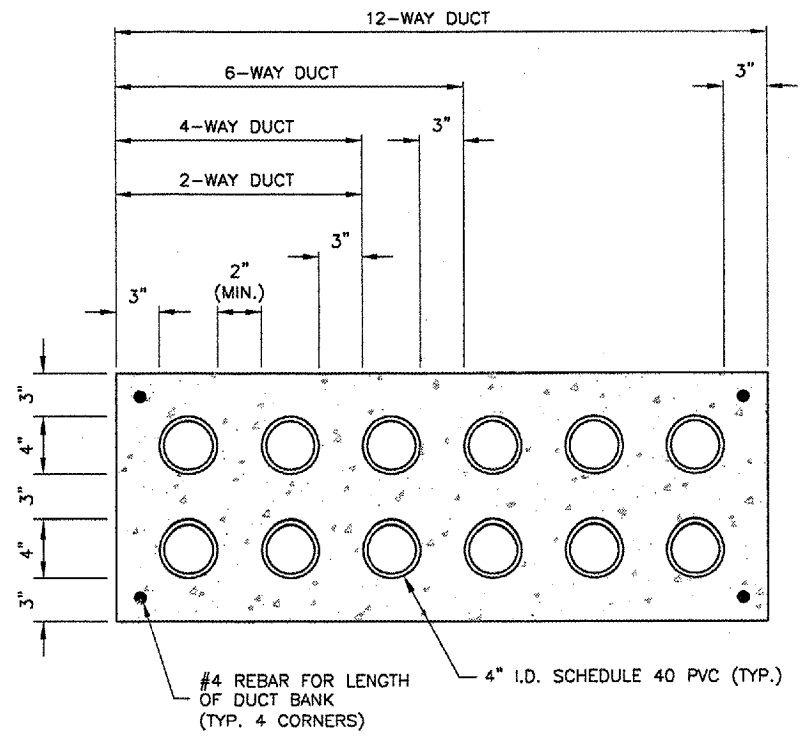


DUCT MARKER DETAILS  
 N.T.S.



TURF CABLE / SPLICE MARKER  
 N.T.S.

- NOTES
1. CABLE MARKERS SHALL BE INSTALLED AT ALL BENDS AND EVERY 200' ALONG THE HOMERUN.
  2. ITEM 610 CONCRETE SHALL BE USED.
  3. ALL EXPOSED EDGES SHALL BE EDGED WITH A 1/4" RADIUS TOOL.
  4. THE COST OF FURNISHING AND INSTALLING NEW MARKERS SHALL BE INCIDENTAL TO THE ASSOCIATED ITEMS.
  5. A MARKER CONFORMING TO THIS DETAIL MARKED "SPLICE" SHALL BE INSTALLED AT ALL SPLICE LOCATIONS NOT IN LIGHT CANS OR MANHOLES.

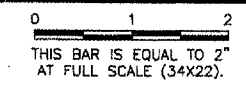


DUCT BANK DETAIL  
 N.T.S.

- NOTES
1. DIMENSIONS SHOWN ARE MINIMUM.
  2. TOP OF CONCRETE ENCASMENT TO BE NOT LESS THAN 18" BELOW FINISHED SUBGRADE.
  3. DUCT CONCRETE SHALL BE ITEM 610 STRUCTURAL P.C.C. CONCRETE.
  4. ALL DUCT SHALL BE 4" INSIDE DIAMETER.
  5. LOCATIONS SHOWN ARE APPROXIMATE. DUCT BANKS SHALL BE INSTALLED AT LOCATIONS DESIGNATED BY THE ENGINEER.
  6. CONTRACTOR SHALL INSTALL DUCT BANKS AT A DEPTH WHICH WILL NOT CONFLICT WITH ELEVATION SENSITIVE UTILITIES.
  7. A PULL WIRE SHALL BE PROVIDED IN EACH UNUSED CONDUIT. UNUSED DUCT SHALL BE SEALED WITH PVC PLUGS/CAPS TO THE SATISFACTION OF THE ENGINEER.
  8. DUCT BANKS SHALL EXTEND A MINIMUM OF 5' BEYOND THE NEW EDGE OF PAVEMENT.

REVISIONS

NUMBER	BY	DATE



SPRINGFIELD AIRPORT AUTHORITY  
 ABRAHAM LINCOLN CAPITAL AIRPORT  
 SPRINGFIELD, ILLINOIS

WIDEN TAXIWAY F

ELECTRICAL DETAILS 3

© Copyright CMT, Inc.  
**CMT**  
 CRAWFORD, MURPHY & TILLY, INC.  
 CONSULTING ENGINEERS  
 License No. 984-000810

DESIGN BY:	RLV
DRAWN BY:	CMT
CHECKED BY:	RLV
APPROVED BY:	RLV
DATE:	AUGUST 07, 2007
JOB No:	07035-02-00