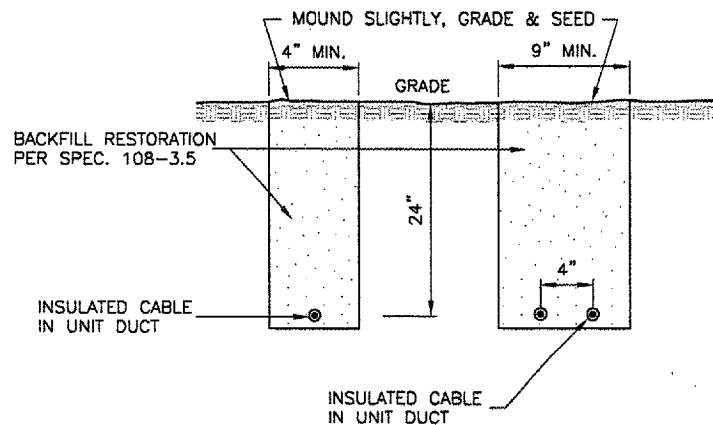


LIGHT IDENTIFICATION DETAIL

N.T.S.

NOTES

1. INSTALL A NONCORROSIVE DISC OF 2" MINIMUM DIAMETER WITH THE NUMBER PERMANENTLY STAMPED, CUT OUT, OR ENGRAVED UNDER THE HEAD OF THE BASE PLATE BOLT OR ATTACHED TO LIGHT FLANGE WITH SET SCREW.
2. LEGENDS SHOWN ARE FOR ILLUSTRATIVE PURPOSES ONLY. CONTRACTOR TO COORDINATE LEGEND WITH AIRPORT.
3. THE CONTRACTOR SHALL NUMBER THE EXISTING/PROPOSED LIGHTS AND SIGNS IN EACH CIRCUIT STARTING AT THE HOMERUN CONTINUING AROUND THE ENTIRE CIRCUIT BACK TO THE HOMERUN.
4. AIRFIELD SIGNS SHALL BE TAGGED & NUMBERED.



TRENCH DETAIL

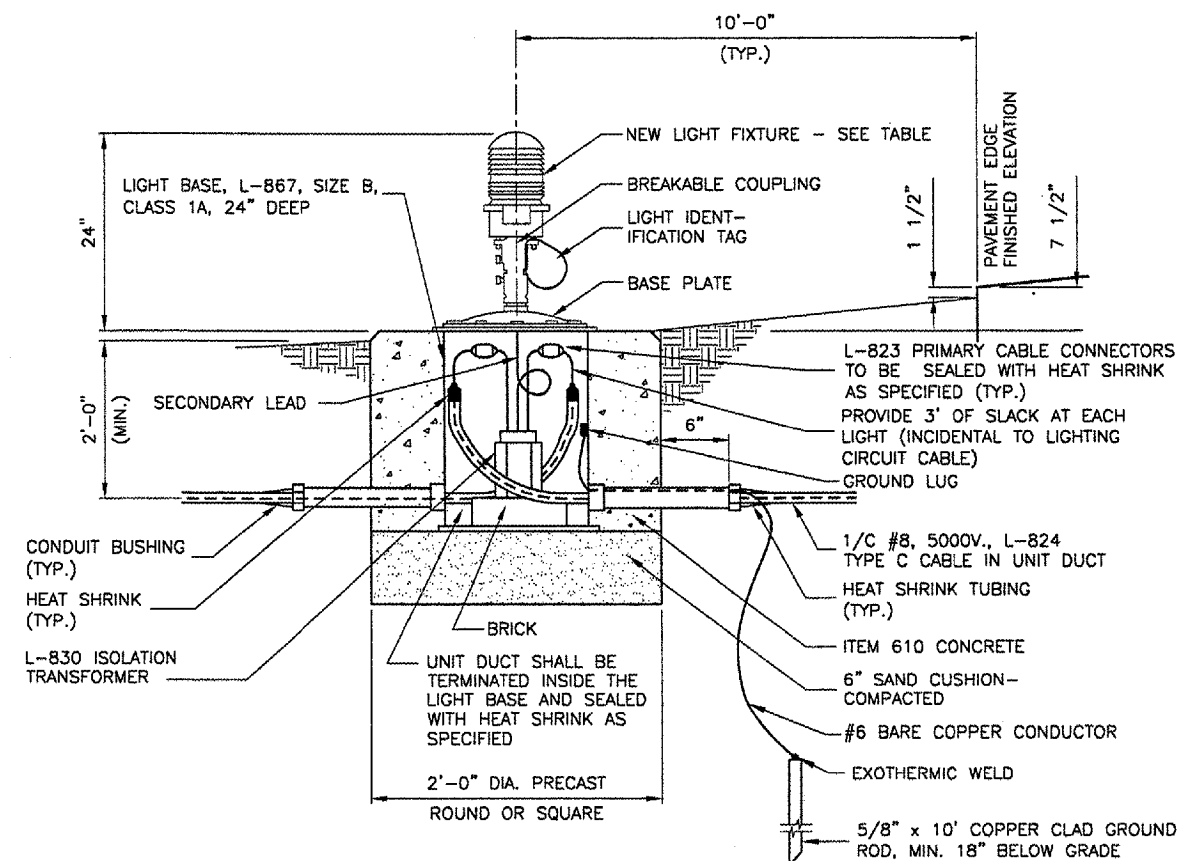
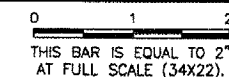
N.T.S.

NOTES

1. TRENCHES WITH MORE THAN 2 CABLES SHALL BE INCREASED 3" IN WIDTH FOR EACH ADDITIONAL CABLE. IF SPECIFIED ON PLANS, TWO PARALLEL TRENCHES MAY BE CONSTRUCTED.
2. DEPTH OF TRENCHES SHALL BE AS SHOWN ABOVE UNLESS OTHERWISE SPECIFIED ON THE PLANS.
3. SAND BACKFILL SHALL BE USED IF THE EXISTING SOIL DOES NOT MEET THE BACKFILL REQUIREMENTS.
4. ALL DISTURBED SURFACES SHALL BE RESTORED TO THEIR ORIGINAL CONDITION. COST IS INCIDENTAL TO ITEM 108.

REVISIONS

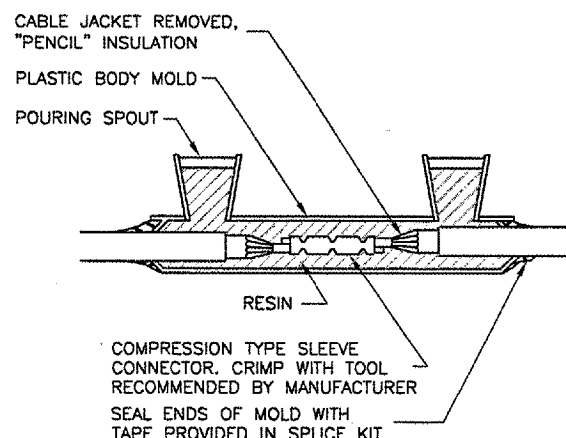
| NUMBER | BY | DATE |
|--------|----|------|
| | | |
| | | |
| | | |



NEW BASE MOUNTED EDGE LIGHT

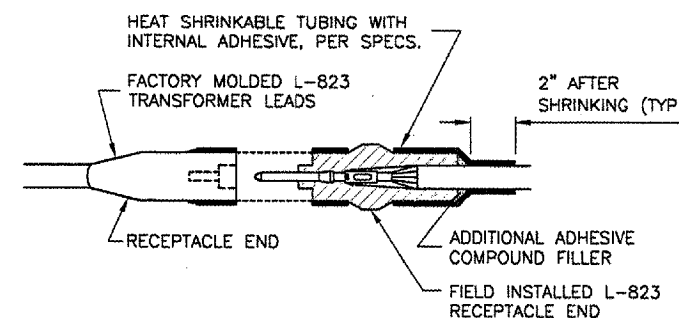
N.T.S.

| FAA LIGHT FIXTURE TYPE | LAMP WATTAGE | LAMP DESCRIPTION | TRANSFORMER TYPE | TRANSFORMER PRI/SEC | HEIGHT |
|------------------------|--------------|------------------|------------------|---------------------|--------|
| L-861-T | 30-45 | INCAN. 6.6A | L-830 | 6.6A/6.6A | 24" |



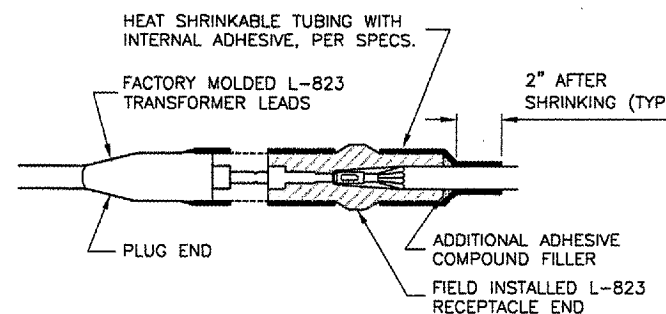
TYPE A

FOR IN-LINE CONNECTIONS OF EXISTING CABLES CUT DURING CONSTRUCTION.



TYPE C

FOR SPLICES AT TAXIWAY LIGHTS AND SIGNS.



TYPE D

FOR SPLICES AT TAXIWAY LIGHTS AND SIGNS.

NOTES

1. INSIDE DIAMETER OF CONNECTOR SHALL PROPERLY MATCH THE OUTSIDE DIAMETER OF CABLE.
2. THE COST OF FURNISHING AND INSTALLING ALL SPLICE MATERIALS SHALL BE INCIDENTAL TO THE ASSOCIATED CABLE ITEMS.
3. THE CONTRACTOR SHALL HAVE A MINIMUM OF TWO (2) TYPE A SPLICE KITS ON THE JOB SITE AT ALL TIMES FOR EMERGENCY REPAIRS.

CABLE SPLICES

N.T.S.



SPRINGFIELD AIRPORT AUTHORITY
 ABRAHAM LINCOLN CAPITAL AIRPORT
 SPRINGFIELD, ILLINOIS

WIDEN TAXIWAY F

ELECTRICAL DETAILS 1

© Copyright CMT, Inc.

CMT
 CRAWFORD, MURPHY & TILLY, INC.
 CONSULTING ENGINEERS
 License No. 184-000813



| | |
|--------------|-----------------|
| DESIGN BY: | RLV |
| DRAWN BY: | CMT |
| CHECKED BY: | RLV |
| APPROVED BY: | RLV |
| DATE: | AUGUST 07, 2007 |
| JOB No: | 07035-02-00 |

IL PROJ. NO. SPI-3711
 AIP PROJ. NO. 3-17-0096-XX