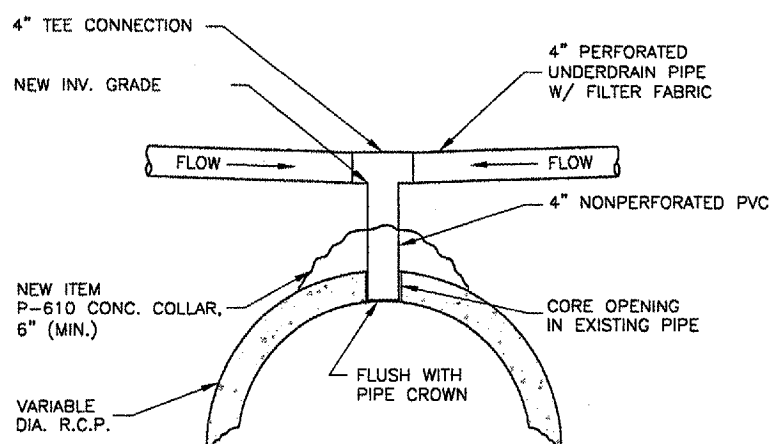
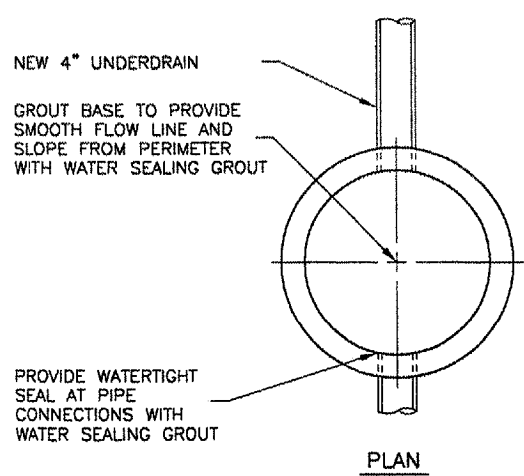
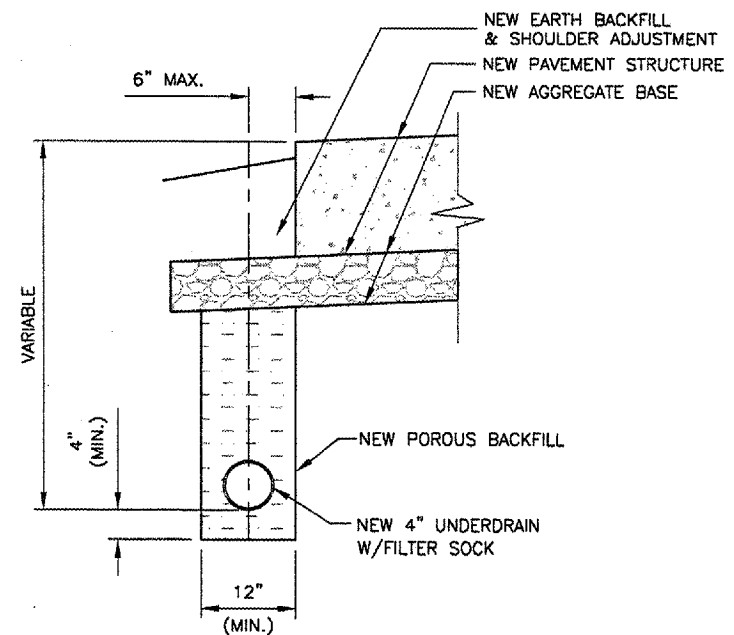


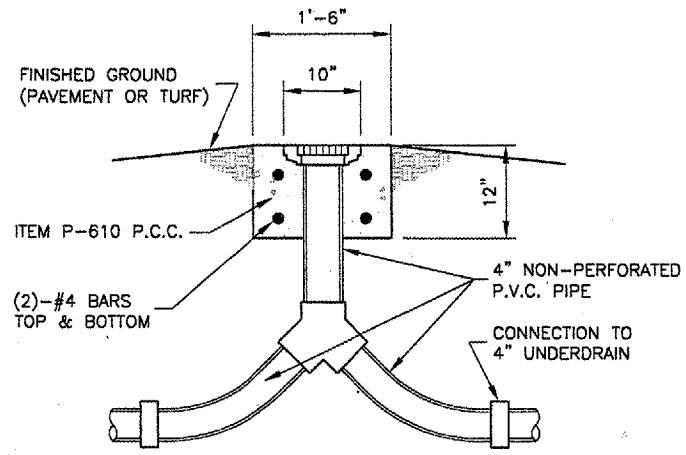
**UNDERDRAIN CLEAN-OUT DETAIL - TYPE 1**  
 N.T.S.



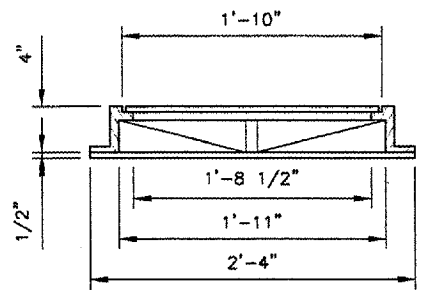
**UNDERDRAIN DIRECT TOP CONNECTION DETAIL**  
 N.T.S.



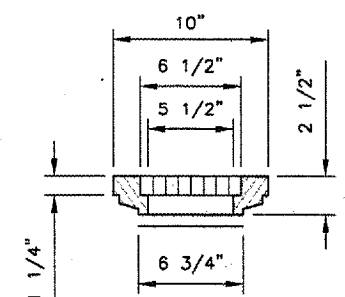
**TYPICAL UNDERDRAIN DETAIL PAVEMENT EDGE**  
 N.T.S.



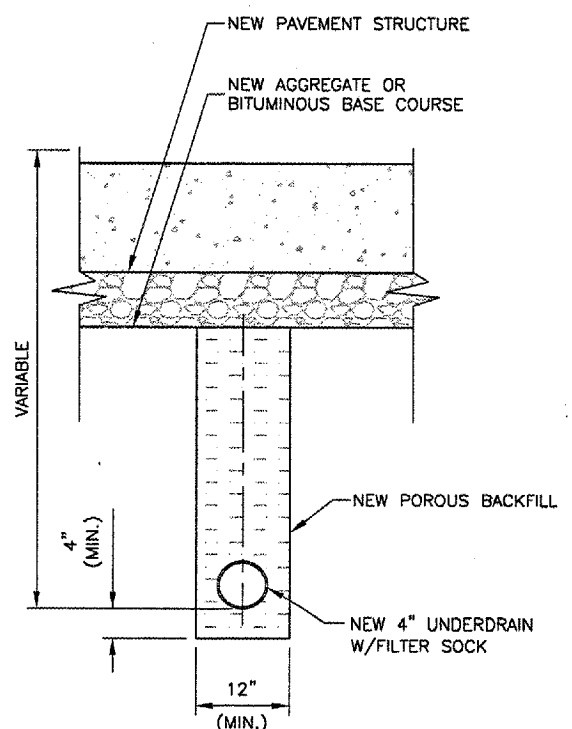
**UNDERDRAIN CLEAN-OUT DETAIL - TYPE 2**  
 N.T.S.



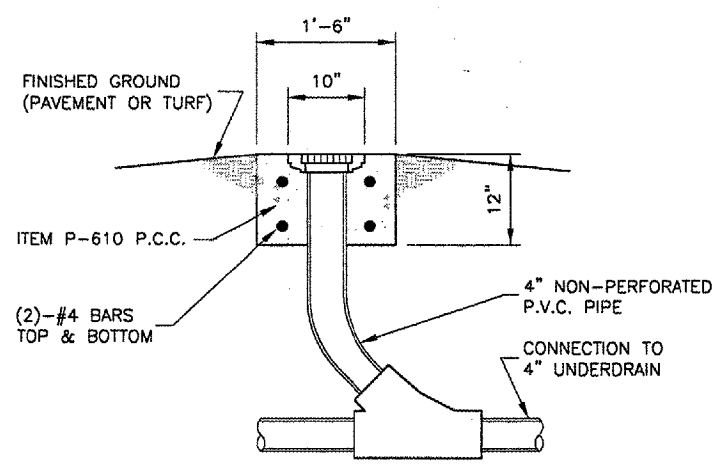
**FRAME AND LID**



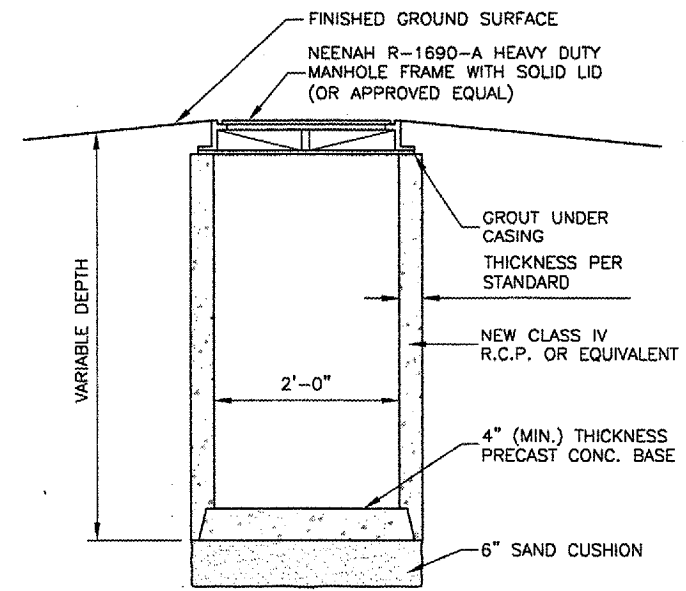
**FRAME AND COVER**



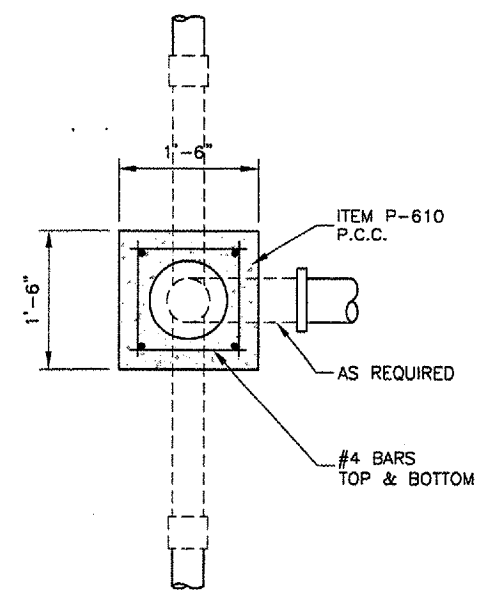
**TYPICAL UNDERDRAIN DETAIL BELOW PAVEMENT**  
 N.T.S.



**UNDERDRAIN CLEAN-OUT DETAIL - TYPE 3**  
 N.T.S.

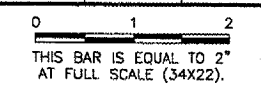



**UNDERDRAIN COLLECTION STRUCTURE DETAIL**  
 N.T.S.




**UNDERDRAIN CLEAN-OUT DETAILS**  
 N.T.S.

REVISIONS		
NUMBER	BY	DATE



  
**SPRINGFIELD AIRPORT AUTHORITY**  
**ABRAHAM LINCOLN CAPITAL AIRPORT**  
**SPRINGFIELD, ILLINOIS**

**WIDEN TAXIWAY F**  
**UNDERDRAIN DETAILS**

  
**CMT**  
 CRAWFORD, MURPHY & TILLY, INC.  
 CONSULTING ENGINEERS  
 License No. 184-000813

DESIGN BY:	RLV
DRAWN BY:	CMT
CHECKED BY:	RLV
APPROVED BY:	RLV
DATE:	AUGUST 07, 2007
JOB No:	07035-02-00

**NOTES**

DURING UNDERDRAIN CONSTRUCTION, CARE SHALL BE TAKEN TO ENSURE GOOD DRAINAGE BETWEEN THE SUB-BASE AND THE POROUS BACKFILL MATERIAL WHICH WILL AFFECT DRAINAGE TO THE UNDERDRAIN SHALL BE REMOVED PRIOR TO THE PLACEMENT OF PROPOSED POROUS BACKFILL. ALL COST FOR THIS WORK SHALL BE CONSIDERED INCIDENTAL.