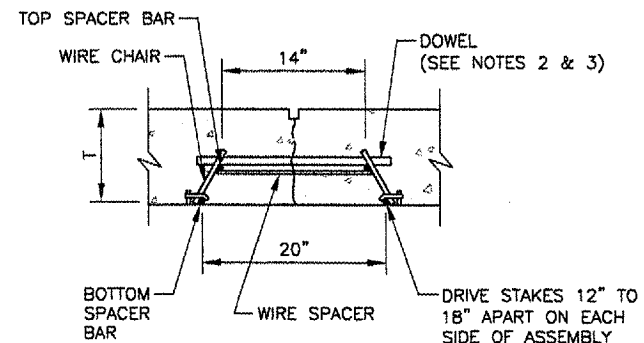
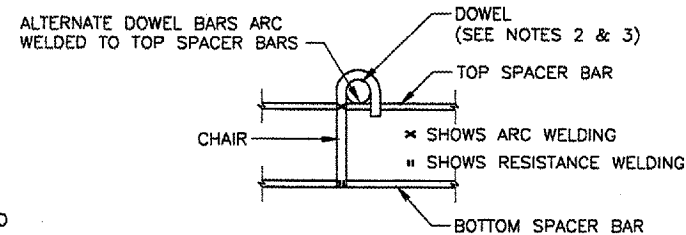


DOWEL BASKET ASSEMBLY DETAILS AND NOTES
N.T.S.



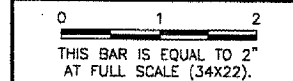
DOWEL BAR INSTALLATION DETAIL
N.T.S.



TYPICAL DOWEL BASKET ELEVATION DETAIL SHOWING CHAIR
N.T.S.

- DOWEL BASKET NOTES**
- #9 GA. WIRE SPACER BAR ARC WELDED TO THE BOTTOM OF TOP SPACER BAR. (MAY BE MECHANICALLY ATTACHED IN LIEU OF WELDING) 3 REQUIRED PER UNIT.
 - DOWEL BAR DIAMETER, LENGTH & SPACING SHALL BE AS SHOWN IN TABLE 2.
 - DOWELS SHALL BE EPOXY COATED FULL LENGTH OF DOWEL. IMMEDIATELY PRIOR TO PAVING, THE FREE END OF EACH DOWEL SHALL BE LUBRICATED OR OILED, FOR HALF THE LENGTH OF THE DOWEL.

REVISIONS		
NUMBER	BY	DATE



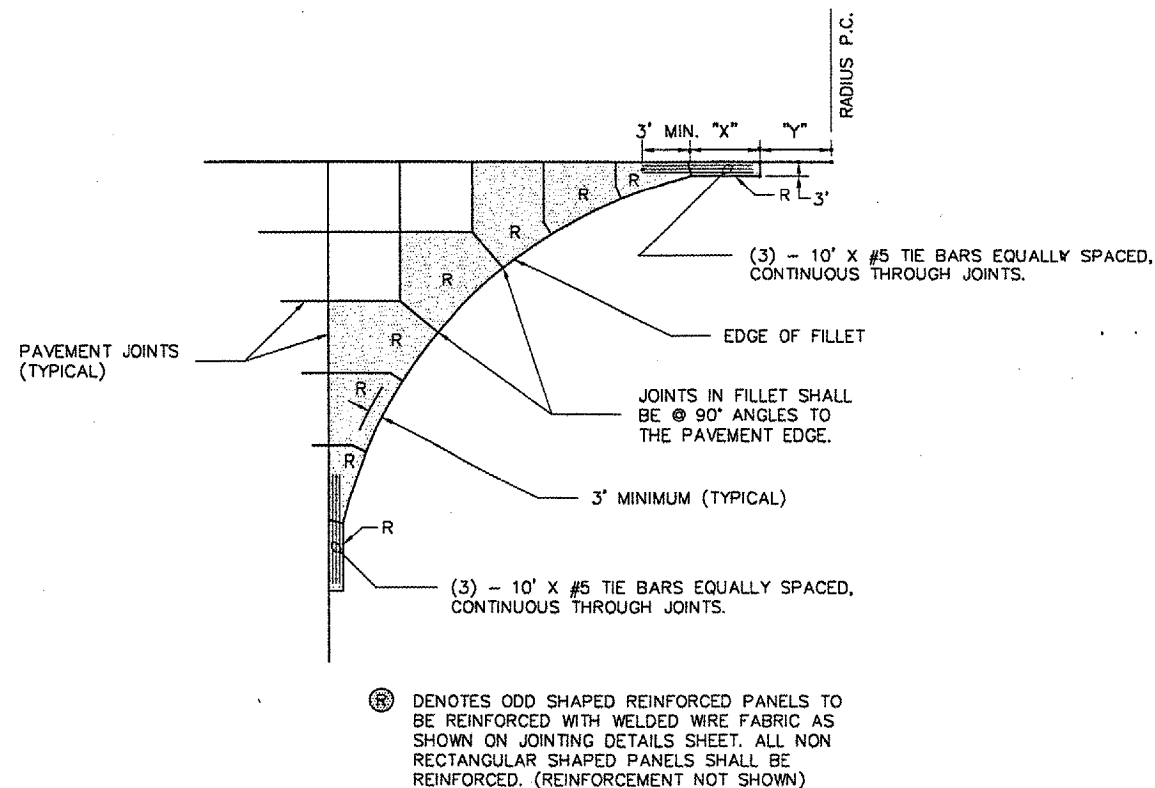
DOWEL BASKET DETAILS

SPRINGFIELD AIRPORT AUTHORITY
 ABRAHAM LINCOLN CAPITAL AIRPORT
 SPRINGFIELD, ILLINOIS

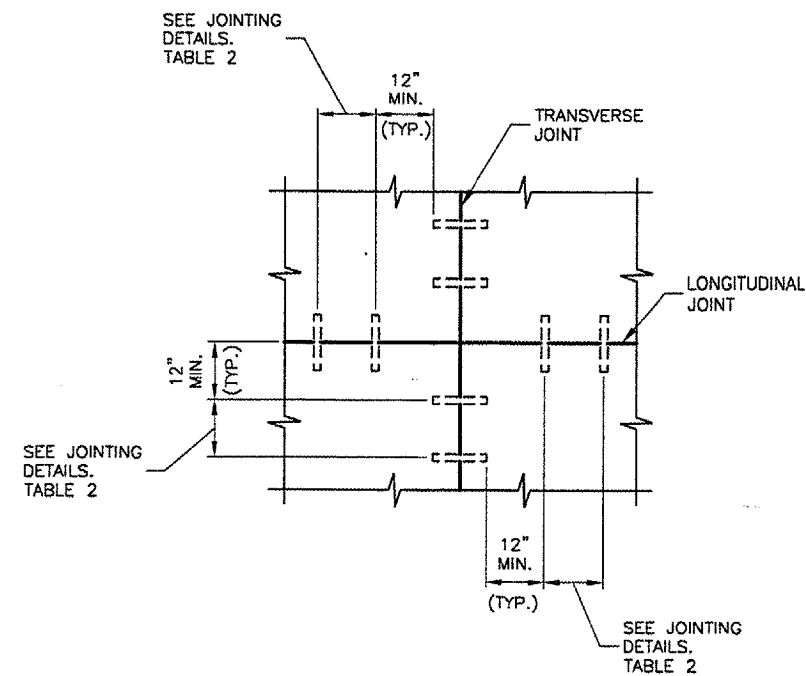
WIDEN TAXIWAY F

PAVING & MISCELLANEOUS DETAILS 1

FILLET RADIUS	"X" (IN FEET)	"Y" (IN FEET)
20	4.30	6.24
25	4.88	7.00
30	5.40	7.68
45	6.72	9.43
50	7.11	9.95
75	8.79	12.21
85	9.38	13.00
100	10.21	14.11
125	11.44	15.78
150	12.56	17.29
175	13.58	18.68
200	14.53	19.98



FILLET DETAIL AND FILLET REINFORCING LAYOUT
N.T.S.



DOWEL PLACEMENT DETAIL
N.T.S.

Copyright CMT, Inc.

CMT
 CRAWFORD, MURPHY & TILLY, INC.
 CONSULTING ENGINEERS
 License No. 84-00063

DESIGN BY:	RLV
DRAWN BY:	CMT
CHECKED BY:	RLV
APPROVED BY:	RLV
DATE:	AUGUST 07, 2007
JOB No:	07035-02-00
IL PROJ. NO. SPI-3711 AIP PROJ. NO. 3-17-0096-XX	
SHEET 16 OF 31 SHEETS	