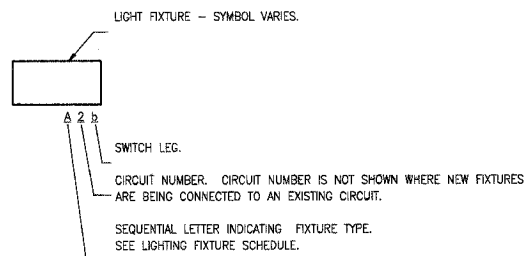


GENERAL NOTES

- REFER TO ARCHITECTURAL REFLECTED CEILING PLANS FOR EXACT LOCATION OF CEILING MOUNTED ELECTRICAL EQUIPMENT (LIGHT FIXTURES, OCCUPANCY SENSORS, ETC.)
- REFER TO ARCHITECTURAL DRAWINGS FOR ELEVATION DRAWINGS INDICATING THE EXACT LOCATION OF WALL MOUNTED INTERIOR AND EXTERIOR LIGHT FIXTURES.
- IN GENERAL, CONDUIT ROUTING SHOWN ON THE DRAWINGS IS DIAGRAMMATIC. ACTUAL CONDUIT ROUTING SHALL BE DETERMINED IN THE FIELD.
- WALL MOUNTED STARTERS, DISCONNECT SWITCHES, COMBINATION STARTERS, ETC. SHALL BE INSTALLED AT 48" TO THE CENTERLINE OF THE DEVICE UNLESS OTHERWISE NOTED ON THE DRAWINGS.
- AT THE ROUGH-IN FOR ALL WALL HEIGHT PHONES, PROVIDE A BLANK COVER PLATE ON THE OUTLET BOX.
- NOT ALL SYMBOLS ARE USED IN EACH PHASE OF THIS PROJECT.

LIGHT FIXTURE DESIGNATION MATRIX



LIGHTING

- CEILING MOUNTED DOWNLIGHT
- WALL MOUNTED LIGHT FIXTURE
- CEILING MOUNTED FLUORESCENT FIXTURE
- CEILING MOUNTED FLUORESCENT FIXTURE WITH EMERGENCY BATTERY BALLAST
- FLUORESCENT STRIP LIGHT
- CEILING MOUNTED EXIT SIGN WITH EMERGENCY BATTERY PACK
- EXTERIOR FLOODLIGHT
- POLE MOUNTED SITE LIGHTING LUMINAIRE
- BOLLARD

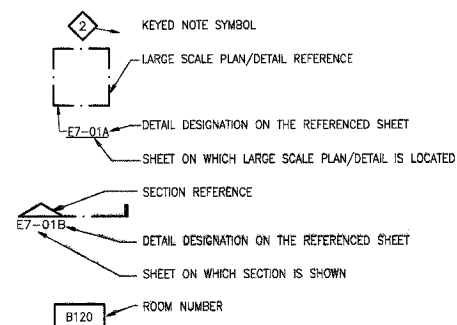
WIRING DEVICES

- DISCONNECT SWITCH - "WP" DENOTES WEATHERPROOF
- ELECTRIC MOTOR
- SINGLE RECEPTACLE
- DUPLEX RECEPTACLE
- DUPLEX RECEPTACLE INSTALLED ABOVE COUNTERTOP (42" WHERE NO COUNTERTOP)
- DUPLEX RECEPTACLE - "GFI" INDICATES GROUND FAULT INTERRUPTING WITH TEST AND RESET BUTTONS, "P" INDICATES "GFI PROTECTED" BY UPSTREAM GFI DEVICE ON SAME CIRCUIT.
- DOUBLE DUPLEX RECEPTACLE
- DOUBLE DUPLEX RECEPTACLE INSTALLED ABOVE COUNTERTOP (42" WHERE NO COUNTERTOP)
- JUNCTION BOX
- SINGLE POLE SWITCH
- 3-WAY LIGHT SWITCH
- DIMMER SWITCH
- MANUAL MOTOR STARTER
- CEILING MOUNTED OCCUPANCY SENSOR
- LIGHTING CONTACTOR
- LIGHTING CONTROL RELAY PANEL
- MOTORIZED DAMPER

ABBREVIATIONS

A	AMPERE(S)
AIC	AMPERE INTERRUPTING CAPACITY
AC	ALTERNATING CURRENT
AF	AMP FUSE
AWG	AMERICAN WIRE GAUGE
AS	AMP SWITCH
CATV	CABLE TELEVISION
CCTV	CLOSED CIRCUIT TELEVISION
CKT	CIRCUIT
CONTR	CONTRACTOR
C/B	CIRCUIT BREAKER
COND	CONDUCTOR
CONN	CONNECTION
C	CONDUIT
CONT	CONTROL
ELEC	ELECTRICAL
EMER	EMERGENCY
EWC	ELECTRIC WATER COOLER
F	FUSED
FACP	FIRE ALARM CONTROL PANEL
FLA	FULL LOAD AMPS
FURN	FURNISHED
G	GROUND
GFI	GROUND FAULT INTERRUPTING
HD	HEAVY DUTY
HID	HIGH INTENSITY DISCHARGE
HPS	HIGH PRESSURE SODIUM
IMC	INTERMEDIATE METAL CONDUIT
INC	INCANDESCENT
INST	INSTALLED
KVA	KILOWATTS
KVA	KILOVOLT AMPERES
MCA	MINIMUM CIRCUIT AMPACITY
MCB	MAIN CIRCUIT BREAKER
MCC	MOTOR CONTROL CENTER
MCM	THOUSAND CIRCULAR MILS
MLO	MAIN LUGS ONLY
MTD	MOUNTED
NEC	NATIONAL ELECTRICAL CODE
NF	NON FUSED
NL	NIGHT LIGHT
P	POLE
PF	POWER FACTOR
PH	PHASE
PNL	PANEL
PRI	PRIMARY
PVC	POLYVINYLCHLORIDE
REC	RECEPTACLE
RECEP	RECEPTACLE
SEC	SECONDARY
SURF	SURFACE
SWBD	SWITCHBOARD
SWBT	SOUTHWESTERN BELL TELEPHONE
SYM	SYMMETRICAL
TELE	TELEPHONE
TEMP	TEMPORARY
THD	TOTAL HARMONIC DISTORTION
TRANS	TRANSFORMER
TIB	TELEPHONE TERMINAL BOARD
TV	TELEVISION
UH	UNIT HEATER
V	VOLTS
VA	VOLTAMPS
VTB	VIDEO TERMINAL BOARD
W	WATTS
WP	WEATHERPROOF
XFMR	TRANSFORMER

MISCELLANEOUS



DISTRIBUTION EQUIPMENT

- TRANSFORMER
- BRANCH CIRCUIT PANELBOARD (SINGLE SECTION)
- BRANCH CIRCUIT PANELBOARD (TWO SECTION)
- DISTRIBUTION PANELBOARD

ONE LINE/WIRING/CONDUIT

- CONDUIT INSTALLED CONCEALED WITHIN WALLS AND ABOVE CEILING.
- CONDUIT INSTALLED BELOW GRADE, SLAB OR FLOOR
- WIRING HOMERUN TO PANELBOARD - SHORT STROKE INDICATES PHASE CONDUCTOR, LONG STROKE INDICATES NEUTRAL CONDUCTOR, LONG STROKE WITH DOT INDICATES EQUIPMENT GROUND CONDUCTOR
- CONDUIT UP
- CONDUIT DOWN
- CONDUIT CAPPED
- CONDUIT STUB
- GROUND
- TRANSFORMER
- FUSE
- SWITCH
- GROUND BUS
- NEUTRAL BUS
- ADJUSTABLE SPEED DRIVE
- DISCONNECT SWITCH
- MAGNETIC STARTER
- COMBINATION MAGNETIC STARTER/DISCONNECT SWITCH
- PRE WIR'D CONTROL PANEL
- CURRENT TRANSFORMERS
- GROUND FAULT PROTECTION
- MOTOR -- NUMBER WITHIN SYMBOL DENOTES HORSEPOWER RATING

VOICE/DATA

- TELEPHONE JACK OUTLET ROUGH-IN - "W" ADJACENT TO DEVICE DENOTES WALL HEIGHT PHONE
- VOICE/DATA JACK OUTLET ROUGH-IN - DESK HEIGHT
- VOICE/DATA JACK OUTLET ROUGH-IN - ABOVE COUNTER

FIRE ALARM

- FIRE ALARM STROBE LIGHT - NUMBER INDICATES CANDELA SETTING
- FIRE ALARM COMBINATION HORN/STROBE LIGHT - NUMBER INDICATES CANDELA SETTING
- FIRE ALARM PULL STATION
- FIRE ALARM CONTROL PANEL
- DUCT MOUNTED SMOKE DETECTOR WITH SAMPLING TUBE
- CEILING MOUNTED SMOKE DETECTOR
- HEAT DETECTOR
- TAMPER SWITCH
- FLOW SWITCH
- CONTROL MODULE
- MONITOR MODULE

NOTE

NOT ALL SYMBOLS AND ABBREVIATIONS ARE USED IN EACH PHASE OF THIS PROJECT.

211 N. Broadway
Suite 1000
St. Louis, MO 63102
(314) 241-0188
FAX (314) 241-0185

KAI

**PHASE 2B
LEWIS AND CLARK MEMORIAL TOWER
VILLAGE OF HARTFORD, ILLINOIS
HARTFORD, ILLINOIS 62049**

**SHEET TITLE:
ELECTRICAL SYMBOLS
AND ABBREVIATIONS**

REV. NO.	REMARKS	DATE

KENNEDY PROJECT NO
KAI# 10-02048

ISSUE DATE
12-JULY-05

SHEET NO

E1-01