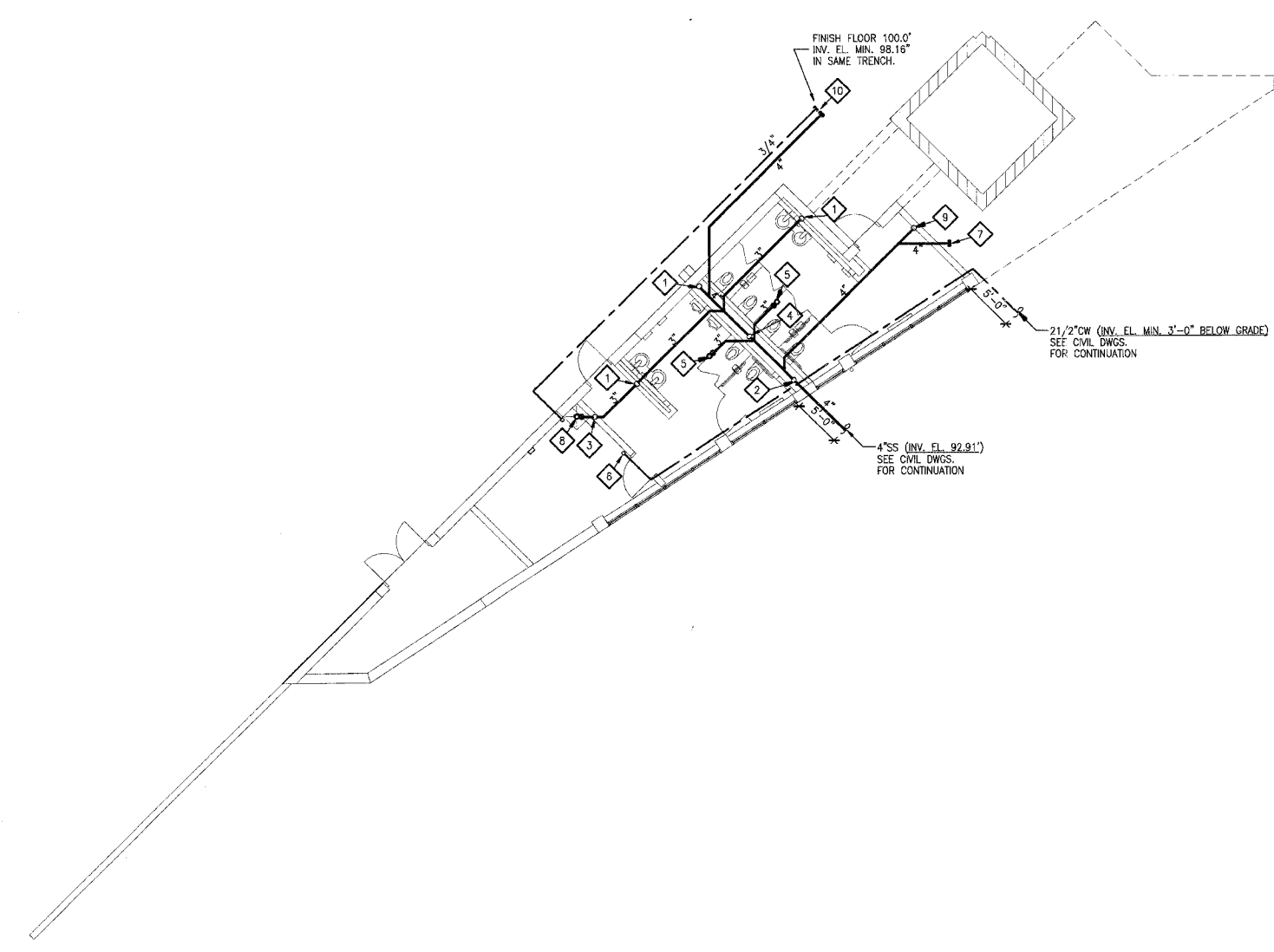


F.A. RTE.	SECTION	COUNTY	TOTAL SHEETS	SHEET NO.
	03-00026-00-PK	MADISON	38	26

FEDERAL AID PROJECT

KEYED NOTES:

- 1 2"W UP
- 2 4"W UP
- 3 1 1/2"V UP
- 4 2"V UP
- 5 3"UP TO, FD-1
- 6 2 1/2" CW UP, SEE SHEET P3-02 FOR CONTINUATION.
- 7 EXTEND 4" SANITARY LINE 12" BEYOND FOOTING, CAPPED FOR FUTURE EXTENSION IN PHASE 2A. (STAKE AND MARK FOR FUTURE IDENTIFICATION AND EXTENSION)
- 8 3"UP TO, MB-1
- 9 3"UP TO, WOO
- 10 CAP 3/4" WATER AND 4" SANITARY PIPING 12" BEYOND PHASE 2B WORK. (STAKE AND MARK FOR FUTURE IDENTIFICATION AND EXTENSION)



A BELOW FLOOR PLAN-PLUMBING
1/8"=1'-0"

U:\0-02048\040\PHASE-2008\PS-01.DWG | 7/11/2005 12:32:48 PM | User's: BS-PLAN-001 TB2436CDL | Image: none

211 N. Broadway
Suite 1000
St. Louis, MO 63102
(314) 241-0100
(314) 241-0105
FAX (314) 241-0105



PHASE 2B
LEWIS AND CLARK MEMORIAL TOWER
VILLAGE OF HARTFORD, ILLINOIS
HARTFORD, ILLINOIS 62049

SHEET TITLE:
**BELOW FLOOR PLAN-
PLUMBING**

REV. NO.	REMARKS	DATE

KENNEDY PROJECT NO
KAI# 10-02048

ISSUE DATE
12-JULY-05

SHEET NO
P3-01