

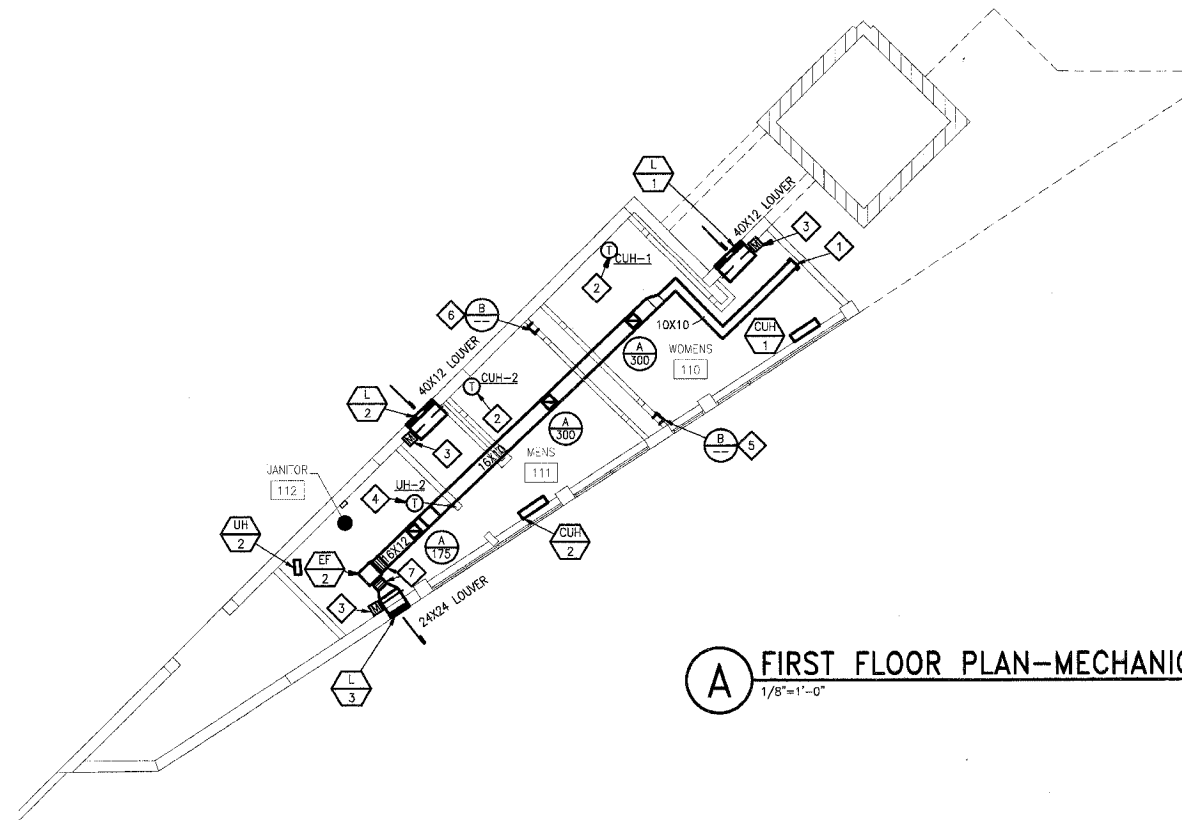
FEDERAL AID PROJECT

GENERAL NOTES:

1. THESE DRAWINGS ARE DIAGRAMATIC IN NATURE, ALL WORK IS TO BE COORDINATED BETWEEN ALL TRADES BEFORE CONSTRUCTION.
2. ALL DUCTWORK, EQUIPMENT AND PIPING IS TO BE INSTALLED IN ACCORDANCE WITH ALL PERTINENT CODES AND SMACNA SEISMIC DESIGN REQUIREMENTS.
3. DUCT SIZES SHOWN ARE SHEETMETAL SIZES WITH 1" LINER.

KEYED NOTES:

1. EXTEND 10"x10" EXHAUST DUCT AS ROUTED AND PROVIDE CAP AT WALL. SEAL AIR TIGHT. DUCT IS FOR FUTURE REGISTER LOCATED IN FUTURE PUMP ROOM. RUN DUCT AS TIGHT AS TO BOTTOM OF STRUCTURE AS POSSIBLE.
2. PROVIDE A SEVEN DAY PROGRAMMABLE HEATING/COOLING THERMOSTAT WITH WHITE METAL LOCKABLE THERMOSTAT GUARD.
3. INTERLOCK DAMPER TO OPEN WITH ACTIVATION OF EF-2. PROVIDE AN 20 GAGE GALVANIZED PLENUM TO MOUNT DAMPER.
4. PROVIDE A LOW VOLTAGE HEATING ONLY THERMOSTAT WITH WHITE METAL LOCKABLE GUARD.
5. MOUNT TOP OF GRILLE AT 1'-6" BELOW STRUCTURE. EXTEND DUCTWORK INTO CHASE AND LEAVE END OPEN TO SPACE.
6. MOUNT TOP OF GRILLE AT 1'-6" BELOW STRUCTURE. EXTEND DUCTWORK INTO CHASE AND LEAVE END OPEN TO SPACE.
7. FLEXIBLE CONNECTORS.



A FIRST FLOOR PLAN-MECHANICAL
1/8"=1'-0"

ELECTRIC HEATER

MARK CUH #	AREA SERVED	MFR.	MODEL	TYPE	CFM H/L	KW	STEPS	MBH	ELECTRICAL		OPER. WT. LBS.	NOTES
									V/PH/HZ	FLA (MCA)		
CUH-1	WOMEN'S	MARKEL	6333-06	FLOOR-MOUNT	250/230	6	2	20.4	208/3/60	17.6	118	1,2,3,4,5,6
CUH-2	MEN'S	MARKEL	6333-06	FLOOR-MOUNT	250/230	6	2	20.4	208/3/60	17.6	118	1,2,3,4,5,6
UH-2	JANITOR	MARKEL	5100	WALL-MOUNT	400	3.3	1	11.5	208/3/60	6.9	30	1,7,8,9,10

- NOTES:
- 1.) 3-POLE CIRCUIT BREAKER/DISCONNECT
 - 2.) 1" PLEATED MEDIA FILTER
 - 3.) KICK SPACE PEDESTAL
 - 4.) FRONT INLET/TOP OUTLET
 - 5.) FACTORY MOUNTED TRANSFORMER
 - 6.) INTEGRAL THERMOSTAT
 - 7.) WALL BRACKET WITH DUST SHIELD
 - 8.) OSHA FAN GUARD
 - 9.) LOW VOLTAGE THERMOSTAT
 - 10.) TRANSFORMER AND CONTACTOR

EXHAUST FAN

MARK EF #	AREA SERVED	MFR.	MODEL	TYPE	CFM	E.S.P. (" WC)	RPM	DRIVE	SONES	ELECTRICAL			OPER. WT. LBS.	NOTES
										HP	V/PH/HZ	FLA (MCA)		
EF-2	TOL./PUMP	COOK	120SQN-B	ILC	1130	.35	1370	BELT	12.5	1/4	115/1/60	5.8	193	1,2,3,4,5,6,7,8,9,10,11,12

- NOTES:
- 1.) PRE-WIRED DISCONNECT SWITCH
 - 2.) EXTENDED LUBRICATION LINES
 - 3.) THERMAL OVERLOAD MOTOR
 - 4.) SPRING VIBRATION ISOLATION HANGERS
 - 5.) OSHA GUARD/MOTOR COVER
 - 6.) 24 HOUR TIME CLOCK
 - 7.) 115V MOTORIZED DAMPER
 - 8.) FLANGED INLET
 - 9.) FLANGED OUTLET
 - 10.) INLET COMPRESSION FLANGE
 - 11.) OUTLET COMPRESSION FLANGE
 - 12.) INLET/OUTLET FLEXIBLE DUCT CONNECTORS
- TYPE: ILC - INLINE CENTRIFUGAL EXHAUST OR SUPPLY FAN
- NOTE: FANS SELECTED BASED UPON A MEDIUM DRIVE LOSS FOR BELT DRIVEN MODELS. FANS ALSO SELECTED AT AN ALTITUDE OF 496 FT AND 70°F.

LOUVER

MARK L #	MFR.	MODEL	SIZE HxWxD	FUNCTION	MATERIAL			FREE AREA VELOCITY	EFFECTIVENESS RATIO %	STATIC PRESS. DROP	NOTES
					FRAME	BLADE	FINISH				
L-1	RUSKIN	EMES20DD	12X40X5	INTAKE	ALUM.	ALUM.	CLEAR. ANODIZED	500	99.3	.04	1
L-2	RUSKIN	EMES20DD	12X40X5	INTAKE	ALUM.	ALUM.	CLEAR. ANODIZED	500	99.3	.04	1
L-3	RUSKIN	EMES20DD	24X24X5	EX-HAUST	ALUM.	ALUM.	CLEAR. ANODIZED	500	99.3	.04	1

- NOTES:
- 1.) INSECT SCREEN

H.V.A.C. DAMPER SPECIFICATIONS

MANUFACTURER	RUSKIN	RUSKIN
MODEL	CD50	CD102
DAMPER TYPE	CONTROL	CONTROL
FUNCTION	OUTSIDE AIR INTAKE	FAN DISCHARGE
SHAPE	RECTANGULAR	RECTANGULAR
MAX. PRESSURE ("WG)	6.2"	12.0"
MAX. VELOCITY (FPM)	4000	4000
MAX. PD @ MAX VELOCITY (24X24, 24"DIA)	0.02"WG	0.01"WG
LEAKAGE @ 1"WG (CFM/SQ.FT.)	2.0@1.0"WG	8.5@1.0"WG
BLADE MATERIAL	ALUMINUM	ALUMINUM
BLADE CONSTRUCTION	6" WIDE 6063-T5 EXTRUDED	7.75" WIDE 0.080 6063-T5 EXTRUDED
BLADE TYPE	AIRFOIL	AIRFOIL
BLADE SEAL MATERIAL	NEOPRENE	SILICONE RUBBER
FRAME MATERIAL	ALUMINUM	GALV. STEEL
FRAME CONSTRUCTION	5"X1" 0.125" EXTRUDED	10"X2" 12 GA. STEEL CHANNEL
AXLE MATERIAL	PLATED STEEL	PLATED STEEL
AXLE DIAMETER	1/2"	3/4"
BEARING MATERIAL (TYPE)	SYNTHETIC	STAINLESS STEEL
NOTES	-	-

AIR DEVICE SCHEDULE

PLAN MARK	EXHAUST / RETURN / TRANSFER GRILLES								
	MANUFACTURER MODEL NO.	NECK SIZE	FACE SIZE	MOUNT	MATERIAL	ACCESSORIES	FINISH	TYPE	NOTES
A	TITUS 350FL	12X12	-	DUCT SIDEWALL	AL	VC	BWE	FAB	
B	TITUS 350FL	10X10	-	DRYWALL SIDEWALL	AL	-	BWE	FAB	

MATERIAL: AL - ALUMINUM
ACCESSORIES: VC - VOLUME CONTROL DAMPER
TYPE: FAB - FIXED ANGLE BLADE
FINISH: BWE - BAKED WHITE ENAMEL

211 N. Broadway
Suite 1000
St. Louis, MO 63102
(314) 241-0100
FAX (314) 241-0105

KAI

PHASE 2B
LEWIS AND CLARK MEMORIAL TOWER
VILLAGE OF HARTFORD, ILLINOIS
HARTFORD, ILLINOIS 62049

SHEET TITLE:
FIRST FLOOR PLAN-MECHANICAL

DATE	REMARKS	REV. NO.

KENNEDY PROJECT NO
KAI# 10-02048

ISSUE DATE
12-JULY-05

SHEET NO
M3-01