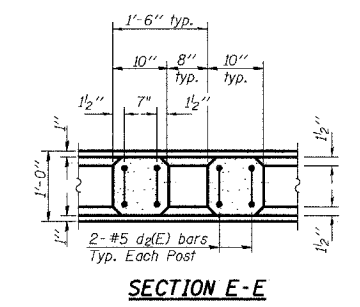
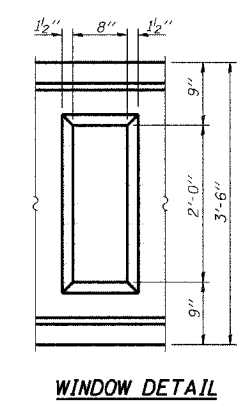
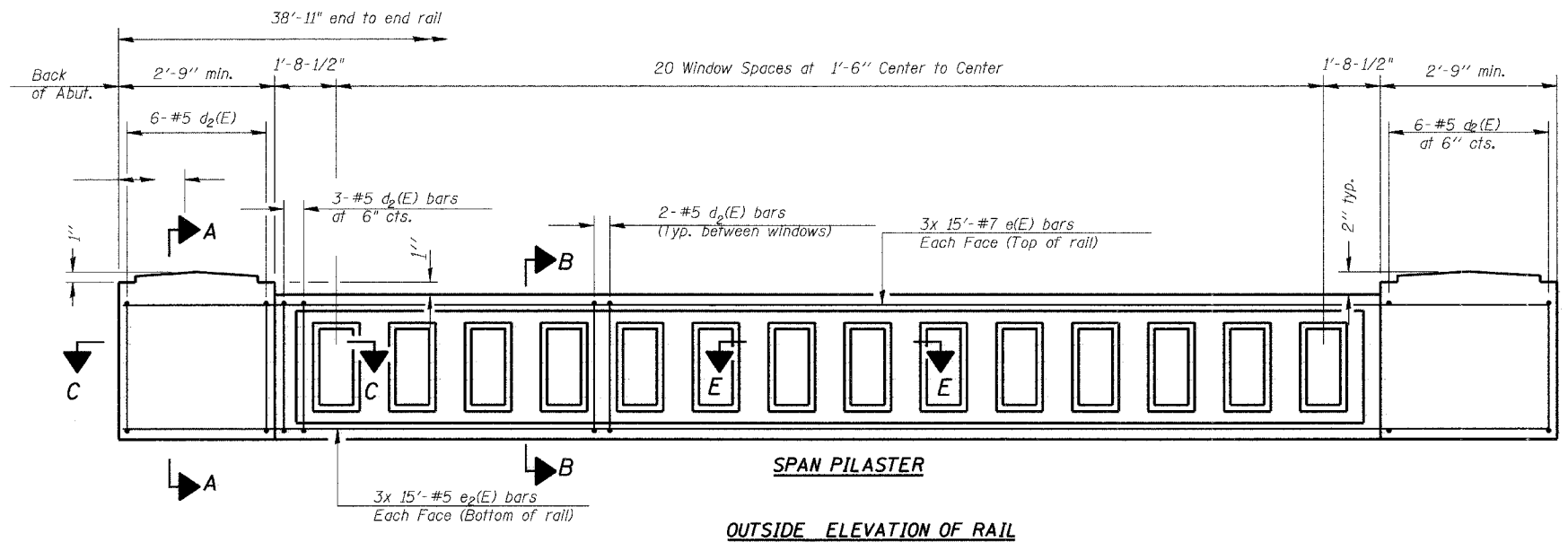
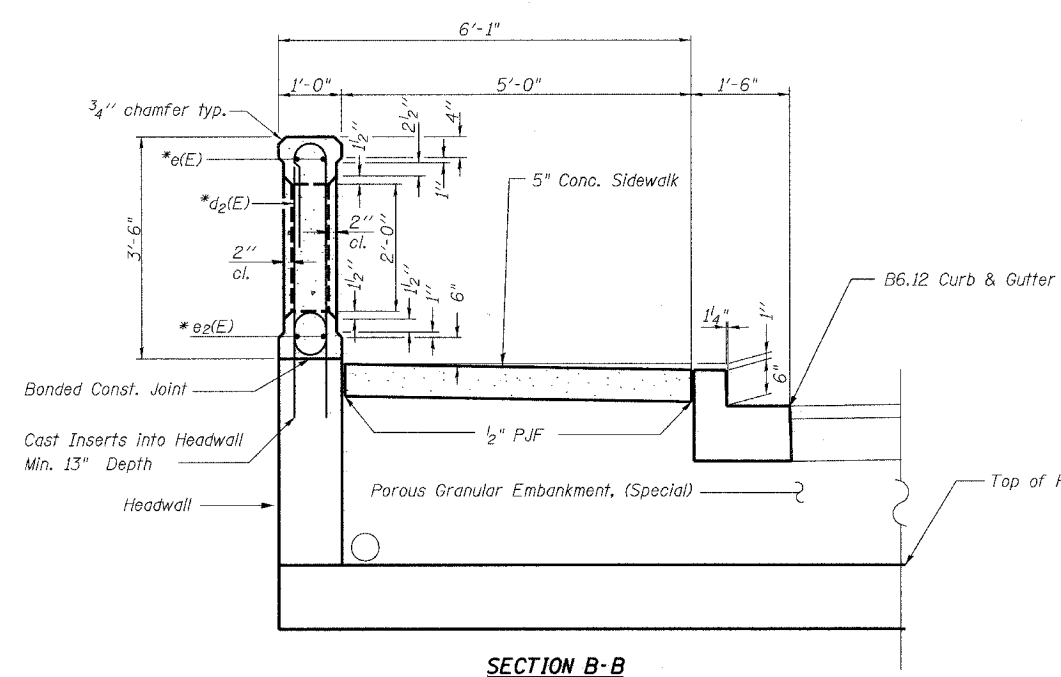


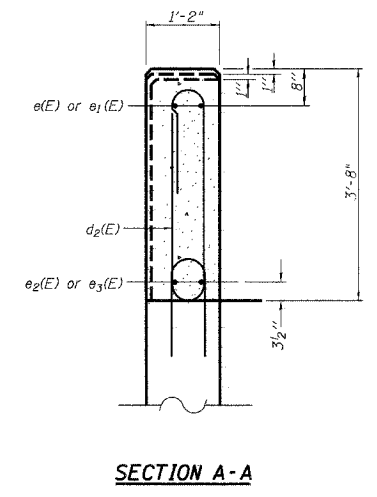
F.A.U. RTE.	SECTION	COUNTY	TOTAL SHEETS	SHEET NO.
7622	06-00085-00-BR	COLES	16	11
STA. 14+00		TO STA. 15+80		
FED. ROAD DIST. NO.		ILLINOIS	FED. AID PROJECT	



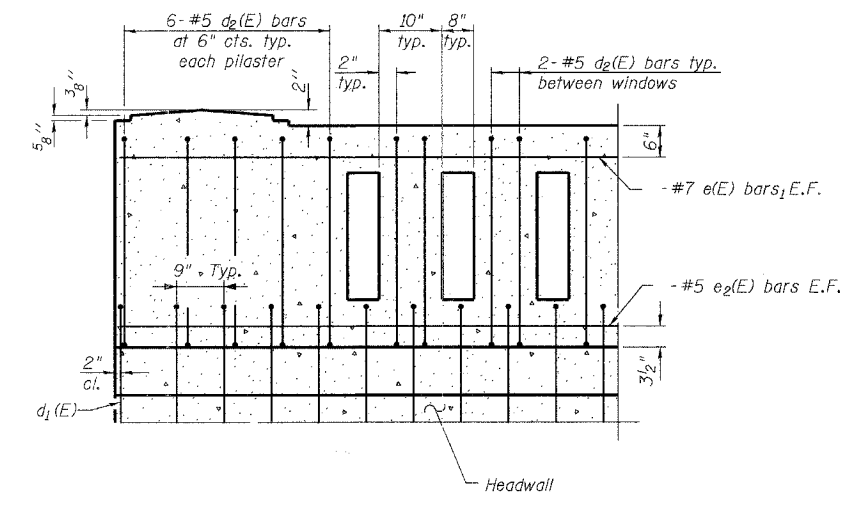
OUTSIDE ELEVATION OF RAIL



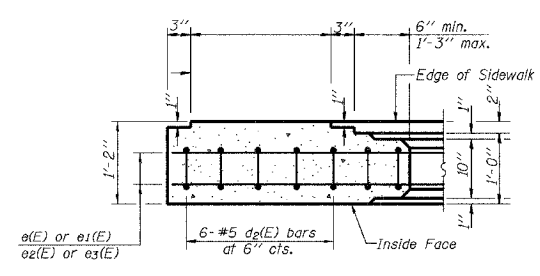
*Bars e(E) thru e3(E) and d2(E) are included in the cost of Texas Combination Concrete Railing, Special.



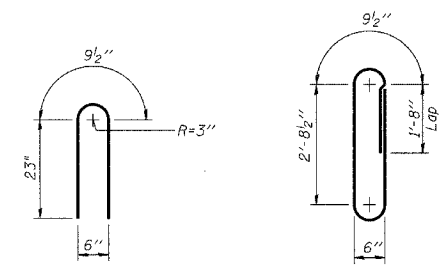
SECTION A-A



TYPICAL REINFORCEMENT PLACEMENT



SECTION C-C



BAR d1(E)

BAR d2(E)

MIN. BAR LAP
 #5 bars = 1'-8"
 #7 bars = 2'-8"

CONCRETE HANDRAIL BILL OF MATERIAL

Bar No.	Size	Length	Shape
d1(E)	#5	3'-7 1/2"	U
d2(E)	#5	8'-8"	U
e(E)	#7	15'-0"	—
e2(E)	#5	15'-0"	—
Reinforcement Bars, Epoxy Coated			Pound 1926 *
Texas Combination Concrete Railing			Foot 77'-10"
Porous Granular Embankment (Special)			Cu. Yd. 65

* Reinforcement Bar quantities for information only

Notes:
 All concrete for railing wall shall be Class BS according to Article 1020.04 of the Standard Specifications. Surface of railing shall receive a rubbed finish according to Article 503.15(b) of the Standard Specifications.
 All parts of the railing including concrete and reinforcing will be paid for at the contract unit price per foot for Texas Combination Concrete Railing.

REVISIONS	
NAME	DATE

ILLINOIS DEPARTMENT OF TRANSPORTATION
CONCRETE BRIDGE RAILING
 JACKSON AVE. OVER TOWN BRANCH CREEK
 SECTION 06-00085-00-BR
 CITY OF CHARLESTON STA. 14+95.17
 STRUCTURE NO. 015-6340

VERT. No Scale
 SCALE: HORIZ. 4/25/2007
 DATE

DRAWN BY A.Baker
 CHECKED BY MED

PLOT DATE = 6/29/2007
 PLOT SCALE = 1/8"=1'-0"
 USER NAME = USER