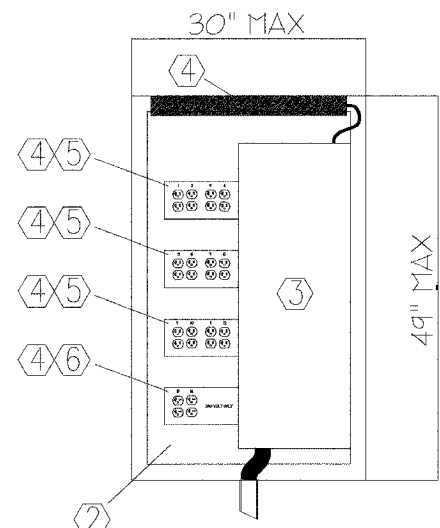


MUNICIPALITY	SECTION	COUNTY	TOTAL SHEETS	SHEET NO.
QUINCY	06-00300-00-LS	ADAMS	69	62

AT METER - 200 AMP MAIN BUS RATING 150 AMP		1 PHASE 120/240 DELTA POWER PANEL SURFACE MOUNTED				FEEDER CABLE ENTRANCE BOTTOM				
LOAD IDENTIFICATION / DESCRIPTION	# OF POLES	AMP RATING	CIRC. #	A	B	CIRC. #	AMP RATING	# OF POLES	LOAD IDENTIFICATION / DESCRIPTION	
1000 RECEPTACLE 1	1	20	1	●	●	2	20	1	RECEPTACLE 9	1000
1000 RECEPTACLE 2	1	20	3	●	●	4	20	1	RECEPTACLE 10	1000
1000 RECEPTACLE 3	1	20	5	●	●	6	20	1	RECEPTACLE 11	1000
1000 RECEPTACLE 4	1	20	7	●	●	8	20	1	RECEPTACLE 12	1000
1000 RECEPTACLE 5	1	20	9	●	●	10	20	2	RECEPTACLE 13	1000
1000 RECEPTACLE 6	1	20	11	●	●	12	20	2	RECEPTACLE 14	1000
1000 RECEPTACLE 7	1	20	13	●	●	14	20	2		
925 RECEPTACLE 8	1	20	15	●	●	16	20	2		
75 CABINET LIGHTING	1	20	17	●	●	18	20	1	SPARE	
ESTIMATED DEMAND LOAD 16 KVA										

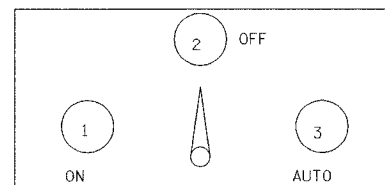


**KEY NOTES FOR ELECTRIC SERVICE INSTALLATION, 200 AMP, 120/240**

- ALL WIRING SHALL BE 12 AWG THHN COPPER, UNLESS OTHERWISE NOTED.
- PROVIDE 12 GAUGE STEEL PANEL, 26"W X 45"H. CONTRACTOR TO PROVIDE NECESSARY HARDWARE TO INSTALL PLATE IN ENCLOSURE, BUT DO NOT ALLOW MOUNTING HARDWARE TO PIERCE THE OUTSIDE OF ENCLOSURE. STEEL PLATE IS TO BE PAINTED WHITE.
- PROVIDE LOAD CENTER AND BOLT TO STEEL PLATE AS SHOWN. CONNECT THE EXISTING GROUND WIRE TO THE GROUND BUS OF THE LOAD CENTER. CONNECT THE FEEDERS TO THE MAIN CB OF THE LOAD CENTER.
- PROVIDE STEEL RACEWAY, WIREMOLD G4000 SERIES OR APPROVED EQUAL. FOR EACH RACEWAY PROVIDE TWO BLANK END FITTINGS. ONE FITTING SHALL BE USED TO ROUTE THE BRANCH CIRCUITS INTO THE RACEWAY. PROVIDE TWO 1/2" NIPPLES AND HARDWARE TO ATTACH RACEWAY TO LOAD CENTER. OTHER BLANK END FITTING SHALL BE USED TO TERMINATE RACEWAY.
- PROVIDE INDUSTRY RATED 125V/20A DUPLEX RECEPTACLES, LEVITON 5362 OR APPROVED EQUAL. EACH DUPLEX RECEPTACLE SHALL HAVE A DEDICATED 20A CIRCUIT BREAKER AND NEUTRAL WIRE.
- PROVIDE INDUSTRY RATED 250V/20A DUPLEX RECEPTACLES, LEVITON 5462 OR APPROVED EQUAL. EACH DUPLEX RECEPTACLE SHALL HAVE A DEDICATED 20A CIRCUIT BREAKER.
- FOR EACH GROUP OF FOUR DUPLEX RECEPTACLES, PROVIDE TWO 106 FRAMES AND ONE COVER, WIREMOLD G4047-2BBB. IDENTIFY EACH DUPLEX RECEPTACLE WITH PERMANENT INK LABEL, AS SHOWN.
- PROVIDE 24" FLUORESCENT CABINET LIGHT WITH DOOR SWITCH, HOFFMAN A-LF16D24 OR APPROVED EQUAL. ATTACH TO ENCLOSURE TOP, BUT DO NOT ALLOW MOUNTING HARDWARE TO PIERCE THE OUTSIDE OF ENCLOSURE. PROVIDE 3/8" FMC TO ROUTE 14 AWG THHN COPPER CONDUCTORS TO LIGHTING CB.
- ALL BREAKERS IN BOX TO BE GFCI TYPE.
- CITY OF QUINCY TO PROVIDE TYPE III TRAFFIC CONTROL CABINET TO MOUNT SERVICE INSIDE. CONTRACTOR TO PAINT CONTROL BOX BLACK. FOUNDATION PAID FOR SEPARATELY.

**NOTES:**

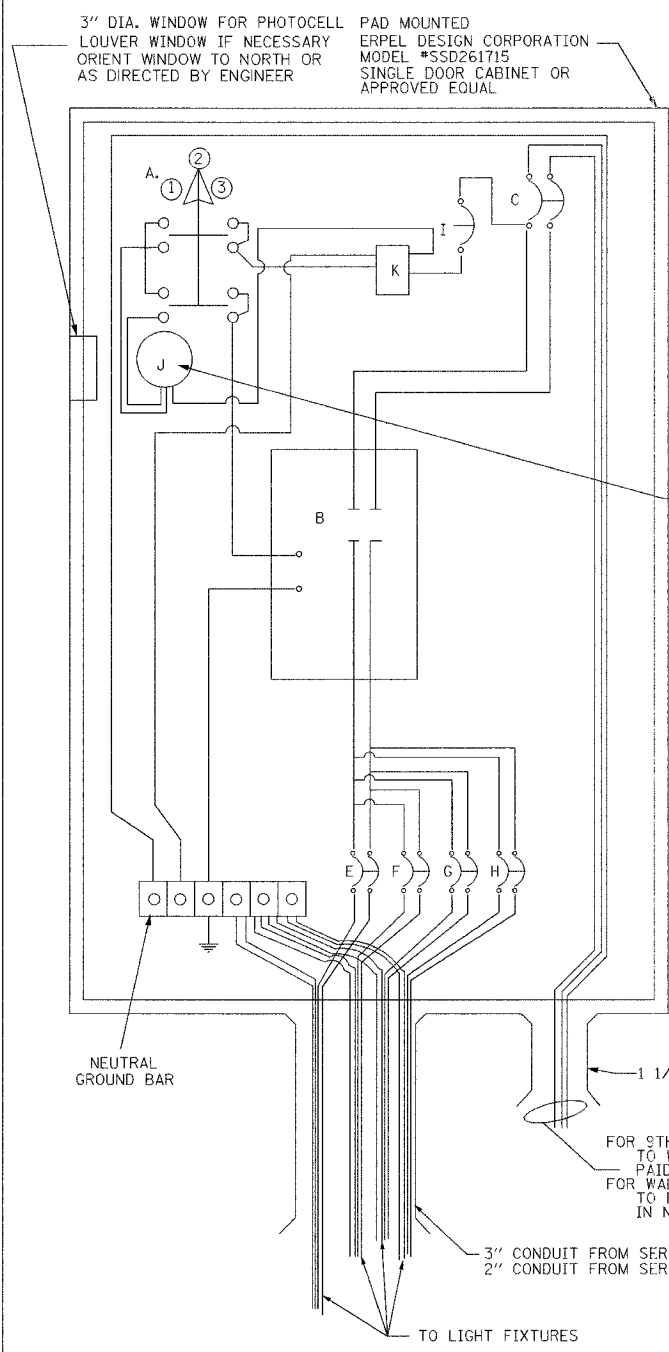
- ALL ENCLOSURES SHALL BE NEMA TYPE 4 5052-H32 ALUMINUM ALLOY WEATHER PROOF BOX WITH CCL (CORBIN) #R357SGS LOCK WITH KEYHOLE COVER OR EQUIVALENT AND NATURAL ALUMINUM FINISH, PER FED. SPEC. 00A-250/8.
- CONTROL CABINET PEDESTAL SHALL HAVE NOMINAL INSIDE DIMENSIONS OF 26" X 17" X 15". CABINET AND MATERIALS SHALL COMPLY WITH SECTION 800 OF THE STANDARD SPECIFICATIONS FOR ROAD AND BRIDGE CONSTRUCTION.
- SELECTOR SWITCH SHALL HAVE MARKED POSITIONS WITH METAL OR ENGRAVED PLASTIC NAME PLATE AS SHOWN.



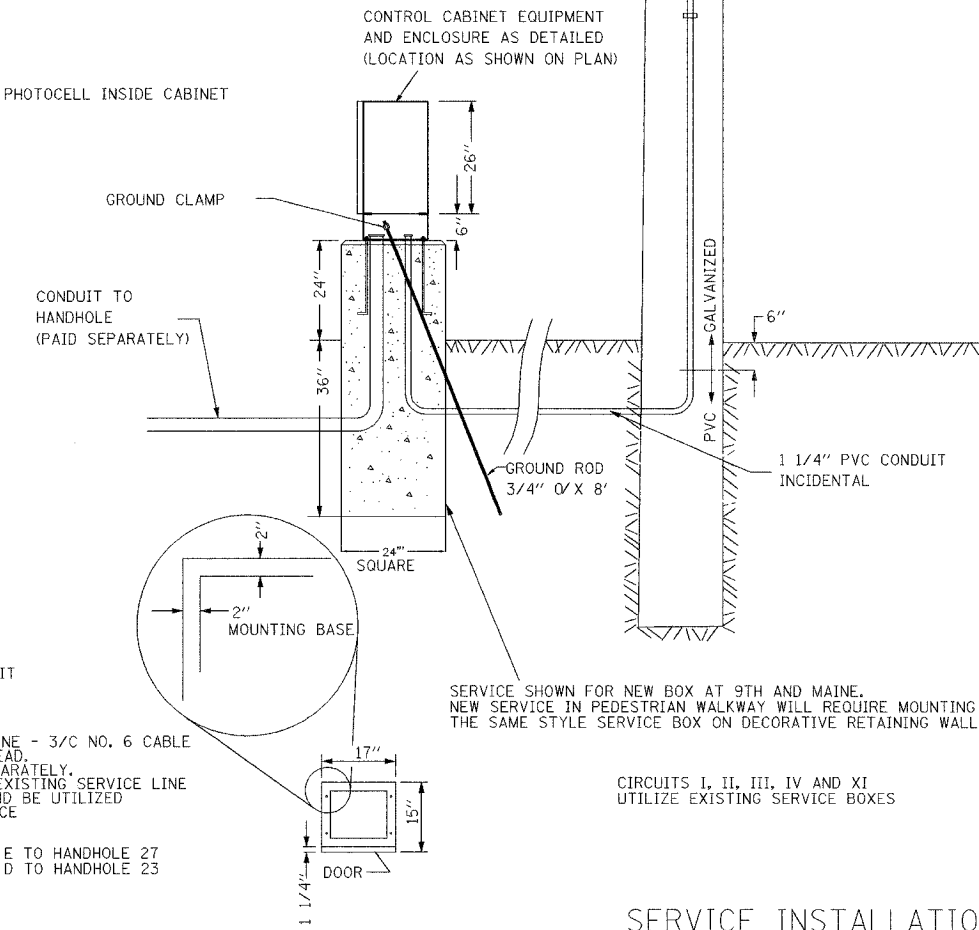
**SELECTOR SWITCH PANEL (NOTE 3)**

**LEGEND:**

- A - SELECTOR SWITCH - 3 POSITION
- B - 2 POLE, 100 AMP CONTACTOR
- SERVICE D - 9TH AND MAINE
- C - 2 POLE, 100 AMP BREAKER
- SERVICE F - WALKWAY
- C - 2 POLE, 100 AMP BREAKER
- I - 1 POLE, 15 AMP BREAKER
- J - PHOTOCELL
- K - SURGE PROTECTOR
- SERVICE D - 9TH AND MAINE
- E - 2 POLE, 40 AMP BREAKER - CIRCUIT VIII
- F - 2 POLE, 35 AMP BREAKER - CIRCUIT IX
- G - 2 POLE, 25 AMP BREAKER - SPARE
- H - 2 POLE, 25 AMP BREAKER - SPARE
- SERVICE F - WALKWAY
- E - 2 POLE, 25 AMP BREAKER - CIRCUIT V
- F - 2 POLE, 30 AMP BREAKER - CIRCUIT VI
- G - 2 POLE, 35 AMP BREAKER - CIRCUIT VII (3 WIRES TO HANDLE VOLTAGE DROP)
- H - 2 POLE, 25 AMP BREAKER - CIRCUIT X



**CONTACTOR AND SWITCHING ENCLOSURE**



SERVICE SHOWN FOR NEW BOX AT 9TH AND MAINE. NEW SERVICE IN PEDESTRIAN WALKWAY WILL REQUIRE MOUNTING THE SAME STYLE SERVICE BOX ON DECORATIVE RETAINING WALL.

CIRCUITS I, II, III, IV AND XI UTILIZE EXISTING SERVICE BOXES

**SERVICE INSTALLATION STREET LIGHTS ONLY 240 V POWER SOURCE NOT TO SCALE**