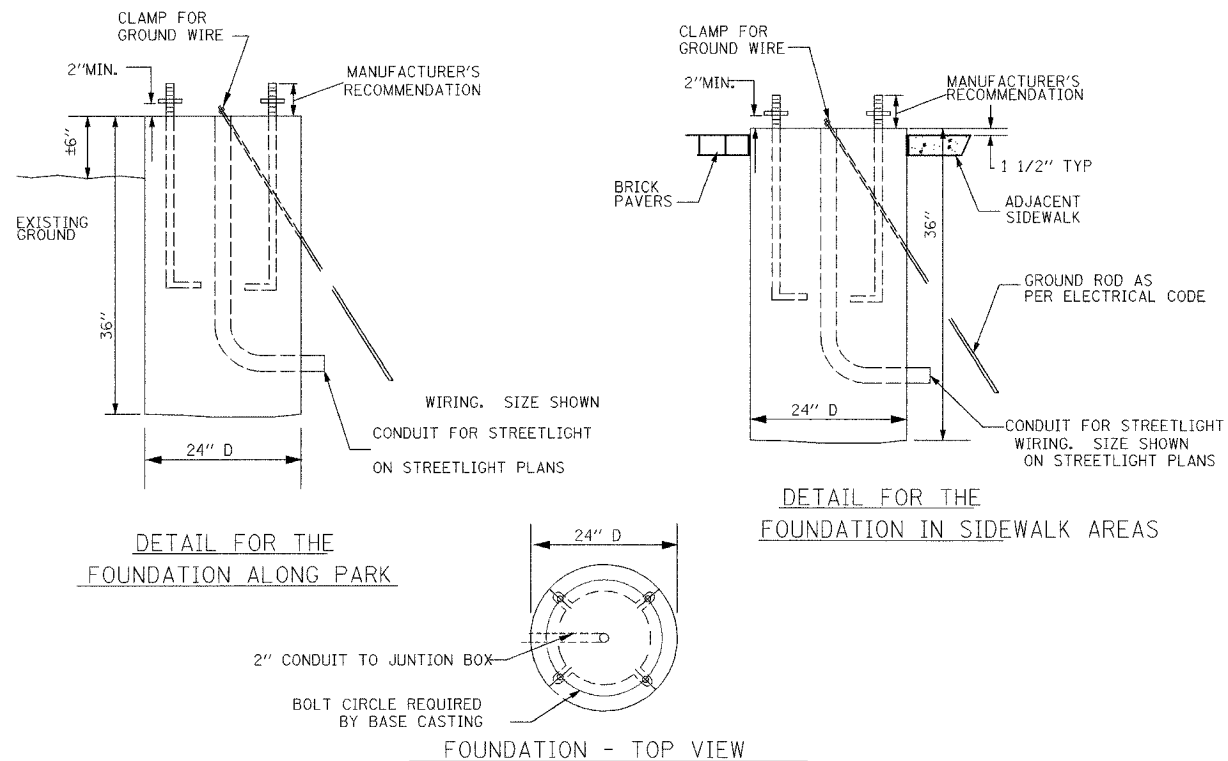


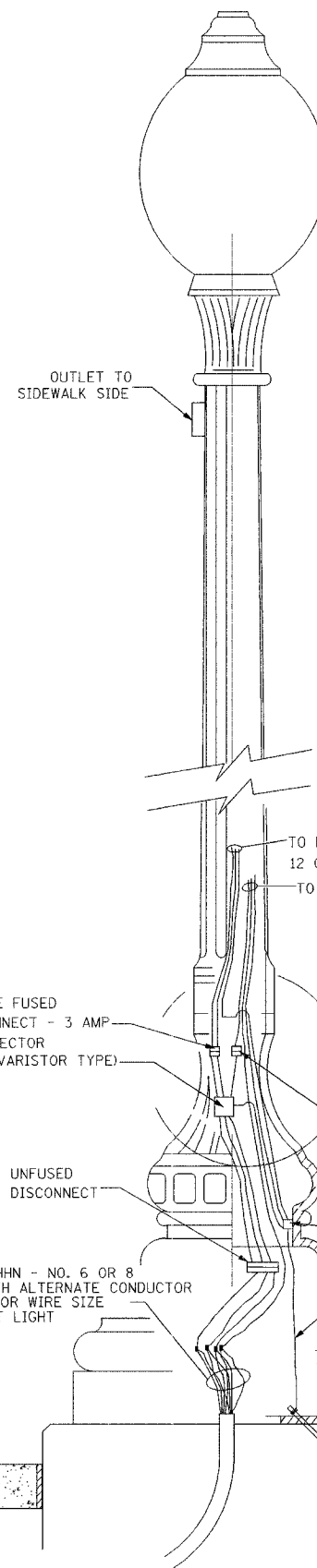
MUNICIPALITY	SECTION	COUNTY	TOTAL SHEETS	SHEET NO.
QUINCY	06-00300-00-LS	ADAMS	69	61

CONCRETE HISTORIC STREET LIGHT FOUNDATION



HISTORIC LIGHT

WITH GFI OUTLET AT TOP
NOT TO SCALE

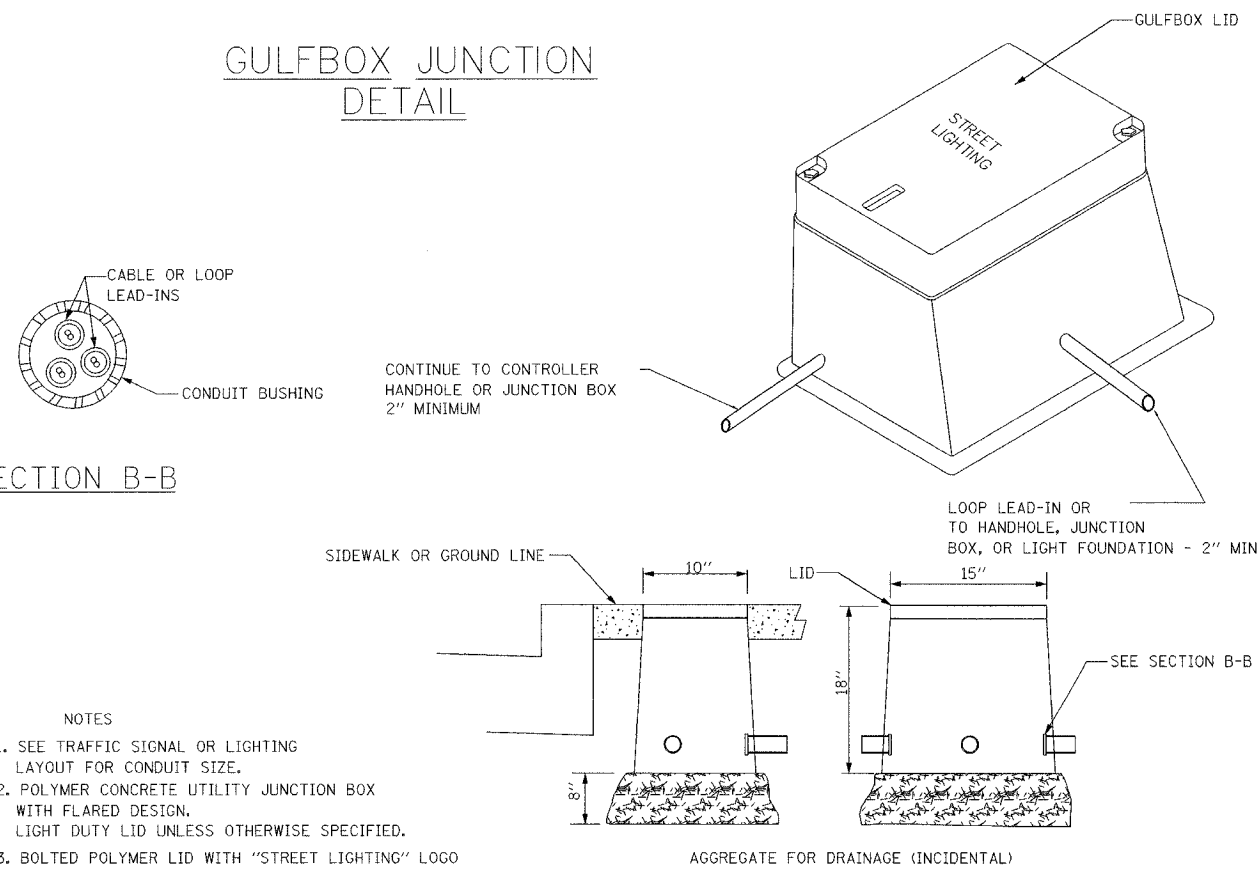


CONTRACTOR TO SUPPLY LIGHT POLES, ANCHOR BOLTS, GLOBES, MULTI-TAP BALLASTS AND FIXTURES.
CONTRACTOR TO INSTALL FOUNDATION AND LIGHT POLE.
HOOK UP FIXTURE AND PROVIDE WIRING INSIDE EACH LIGHT POLE. CABLES TO EACH LIGHT PAID FOR SEPARATELY.
JUNCTION BOX AT EACH LIGHT PAID FOR SEPARATELY.

14' POLE TO BE PROVIDED.

CONTRACTOR TO PROVIDE SURGE PROTECTOR, POLE FUSES AND WIRING IN THE LIGHT.

GULFBOX JUNCTION DETAIL



SECTION B-B

- NOTES
- SEE TRAFFIC SIGNAL OR LIGHTING LAYOUT FOR CONDUIT SIZE.
 - POLYMER CONCRETE UTILITY JUNCTION BOX WITH FLARED DESIGN, LIGHT DUTY LID UNLESS OTHERWISE SPECIFIED.
 - BOLTED POLYMER LID WITH "STREET LIGHTING" LOGO WITH PENTAHEAD STAINLESS STEEL BOLTS.

