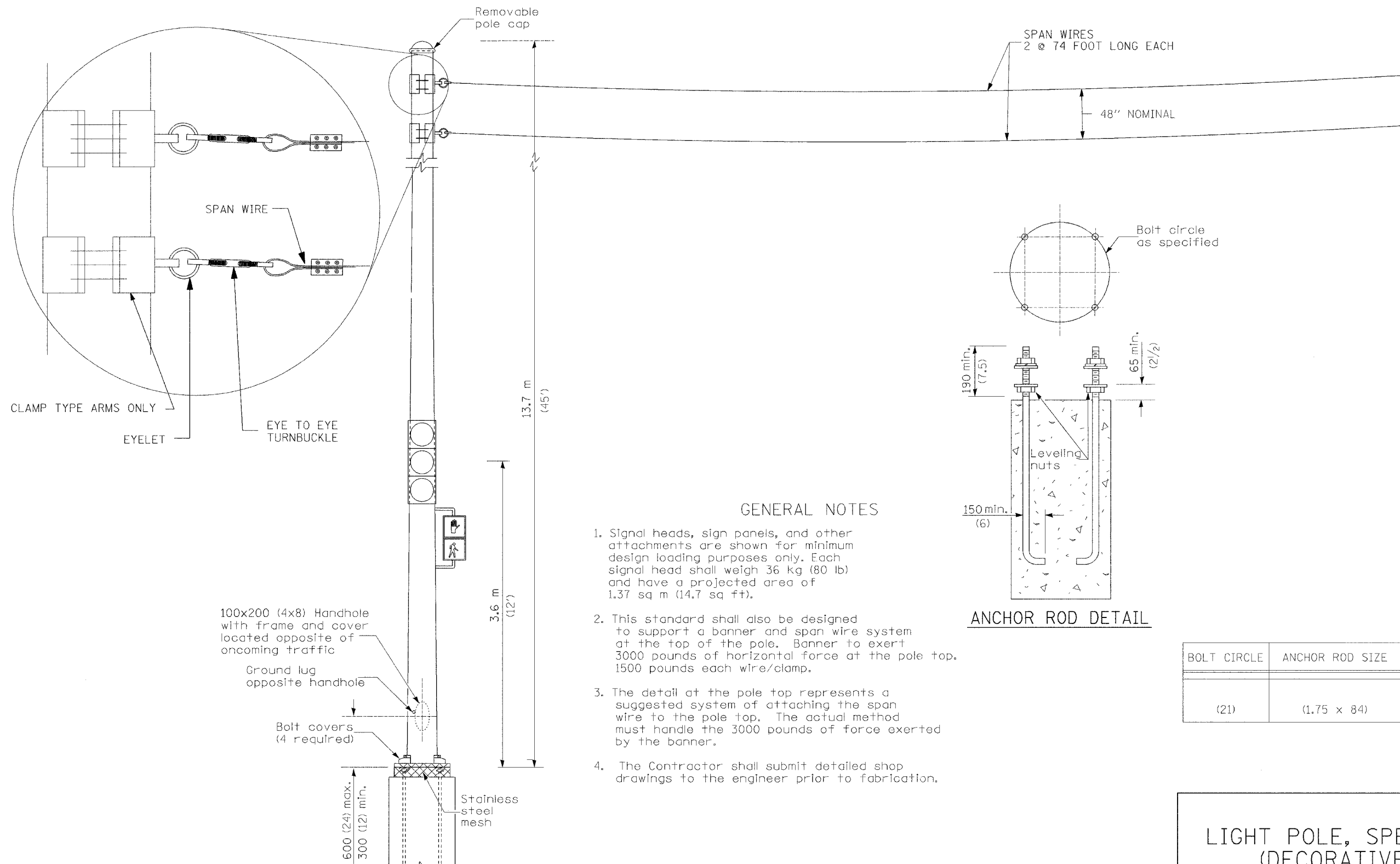


MUNICIPALITY	SECTION	COUNTY	TOTAL SHEETS	SHEET NO.
QUINCY	06-00300-00-LS	ADAMS	69	59



GENERAL NOTES

1. Signal heads, sign panels, and other attachments are shown for minimum design loading purposes only. Each signal head shall weigh 36 kg (80 lb) and have a projected area of 1.37 sq m (14.7 sq ft).
2. This standard shall also be designed to support a banner and span wire system at the top of the pole. Banner to exert 3000 pounds of horizontal force at the pole top. 1500 pounds each wire/clamp.
3. The detail at the pole top represents a suggested system of attaching the span wire to the pole top. The actual method must handle the 3000 pounds of force exerted by the banner.
4. The Contractor shall submit detailed shop drawings to the engineer prior to fabrication.

ANCHOR ROD DETAIL

BOLT CIRCLE	ANCHOR ROD SIZE
(21)	(1.75 x 84)

5TH AND MAINE - SW CORNER

LIGHT POLE, SPECIAL
(DECORATIVE
ORNAMENTAL)