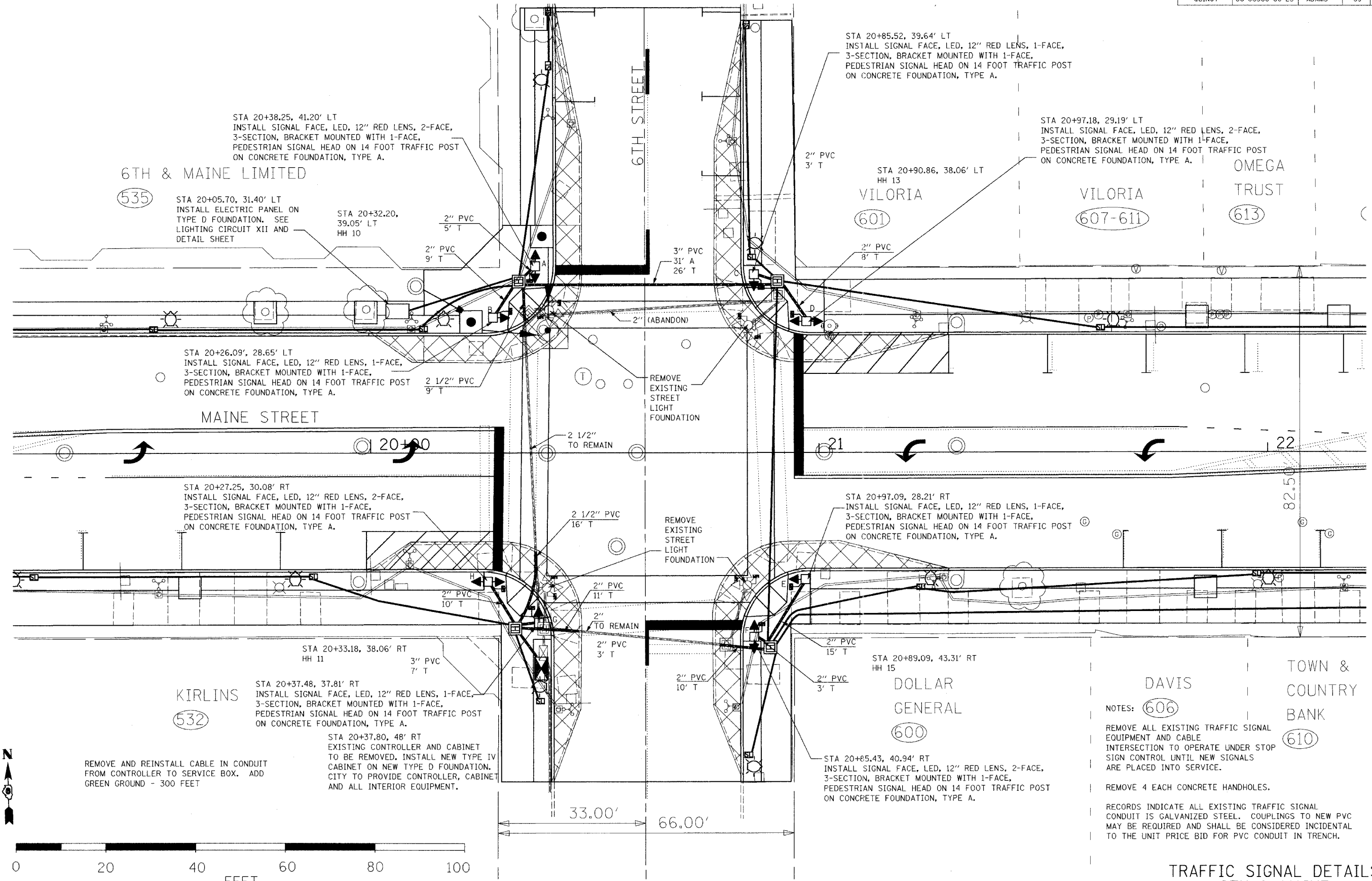


MUNICIPALITY	SECTION	COUNTY	TOTAL SHEETS	SHEET NO.
QUINCY	06-00300-00-LS	ADAMS	69	43

PLAN	DATE	BY
DESIGNED		
PLOTTED		
CHECKED		
ALL DIMENSIONS IN FEET UNLESS OTHERWISE NOTED		
NO. _____		
DATE FILED _____		

PROFILE	DATE	BY
DESIGNED		
PLOTTED		
CHECKED		
ALL DIMENSIONS IN FEET UNLESS OTHERWISE NOTED		
NO. _____		
DATE FILED _____		



6TH & MAINE LIMITED

(535)

STA 20+05.70, 31.40' LT  
INSTALL ELECTRIC PANEL ON  
TYPE D FOUNDATION. SEE  
LIGHTING CIRCUIT XII AND  
DETAIL SHEET

STA 20+38.25, 41.20' LT  
INSTALL SIGNAL FACE, LED, 12" RED LENS, 2-FACE,  
3-SECTION, BRACKET MOUNTED WITH 1-FACE,  
PEDESTRIAN SIGNAL HEAD ON 14 FOOT TRAFFIC POST  
ON CONCRETE FOUNDATION, TYPE A.

STA 20+32.20,  
39.05' LT  
HH 10

2" PVC 5' T

2" PVC 9' T

6TH STREET

STA 20+85.52, 39.64' LT  
INSTALL SIGNAL FACE, LED, 12" RED LENS, 1-FACE,  
3-SECTION, BRACKET MOUNTED WITH 1-FACE,  
PEDESTRIAN SIGNAL HEAD ON 14 FOOT TRAFFIC POST  
ON CONCRETE FOUNDATION, TYPE A.

2" PVC 3' T

STA 20+90.86, 38.06' LT  
HH 13

VILORIA

(601)

2" PVC 8' T

STA 20+97.18, 29.19' LT  
INSTALL SIGNAL FACE, LED, 12" RED LENS, 2-FACE,  
3-SECTION, BRACKET MOUNTED WITH 1-FACE,  
PEDESTRIAN SIGNAL HEAD ON 14 FOOT TRAFFIC POST  
ON CONCRETE FOUNDATION, TYPE A.

VILORIA

(607-611)

OMEGA TRUST

(613)

STA 20+26.09', 28.65' LT  
INSTALL SIGNAL FACE, LED, 12" RED LENS, 1-FACE,  
3-SECTION, BRACKET MOUNTED WITH 1-FACE,  
PEDESTRIAN SIGNAL HEAD ON 14 FOOT TRAFFIC POST  
ON CONCRETE FOUNDATION, TYPE A.

2 1/2" PVC 9' T

MAINE STREET

20+00

2 1/2" TO REMAIN

REMOVE EXISTING STREET LIGHT FOUNDATION

STA 20+27.25, 30.08' RT  
INSTALL SIGNAL FACE, LED, 12" RED LENS, 2-FACE,  
3-SECTION, BRACKET MOUNTED WITH 1-FACE,  
PEDESTRIAN SIGNAL HEAD ON 14 FOOT TRAFFIC POST  
ON CONCRETE FOUNDATION, TYPE A.

2 1/2" PVC 16' T

REMOVE EXISTING STREET LIGHT FOUNDATION

STA 20+97.09, 28.21' RT  
INSTALL SIGNAL FACE, LED, 12" RED LENS, 1-FACE,  
3-SECTION, BRACKET MOUNTED WITH 1-FACE,  
PEDESTRIAN SIGNAL HEAD ON 14 FOOT TRAFFIC POST  
ON CONCRETE FOUNDATION, TYPE A.

2" PVC 10' T

2" PVC 11' T

2" TO REMAIN

2" PVC 3' T

2" PVC 15' T

STA 20+89.09, 43.31' RT  
HH 15

DOLLAR GENERAL

(600)

2" PVC 10' T

2" PVC 3' T

STA 20+85.43, 40.94' RT  
INSTALL SIGNAL FACE, LED, 12" RED LENS, 2-FACE,  
3-SECTION, BRACKET MOUNTED WITH 1-FACE,  
PEDESTRIAN SIGNAL HEAD ON 14 FOOT TRAFFIC POST  
ON CONCRETE FOUNDATION, TYPE A.

REMOVE AND REINSTALL CABLE IN CONDUIT  
FROM CONTROLLER TO SERVICE BOX. ADD  
GREEN GROUND - 300 FEET

STA 20+37.48, 37.81' RT  
INSTALL SIGNAL FACE, LED, 12" RED LENS, 1-FACE,  
3-SECTION, BRACKET MOUNTED WITH 1-FACE,  
PEDESTRIAN SIGNAL HEAD ON 14 FOOT TRAFFIC POST  
ON CONCRETE FOUNDATION, TYPE A.

STA 20+37.80, 48' RT  
EXISTING CONTROLLER AND CABINET  
TO BE REMOVED. INSTALL NEW TYPE IV  
CABINET ON NEW TYPE D FOUNDATION.  
CITY TO PROVIDE CONTROLLER, CABINET  
AND ALL INTERIOR EQUIPMENT.

33.00'

66.00'

DAVIS  
NOTES: (606) TOWN & COUNTRY BANK  
(610)

REMOVE ALL EXISTING TRAFFIC SIGNAL  
EQUIPMENT AND CABLE  
INTERSECTION TO OPERATE UNDER STOP  
SIGN CONTROL UNTIL NEW SIGNALS  
ARE PLACED INTO SERVICE.

REMOVE 4 EACH CONCRETE HANDHOLES.

RECORDS INDICATE ALL EXISTING TRAFFIC SIGNAL  
CONDUIT IS GALVANIZED STEEL. COUPLINGS TO NEW PVC  
MAY BE REQUIRED AND SHALL BE CONSIDERED INCIDENTAL  
TO THE UNIT PRICE BID FOR PVC CONDUIT IN TRENCH.

TRAFFIC SIGNAL DETAILS  
6TH & MAINE

DATE: 8/7/2007  
FILE NAME: S:\2006\6th.dwg  
PLOT SCALE: 1/8"=1'-0"  
USER NAME: default