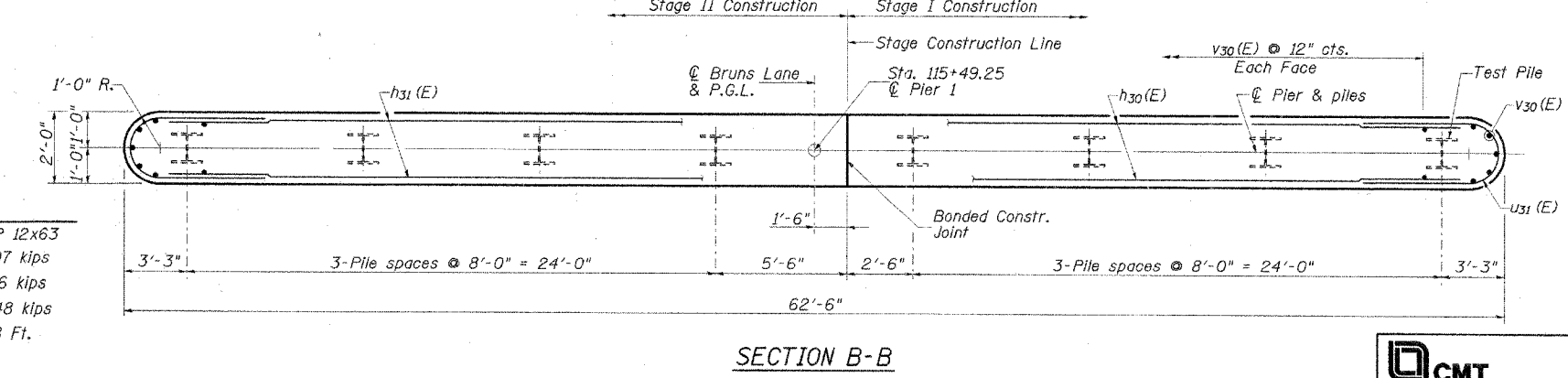
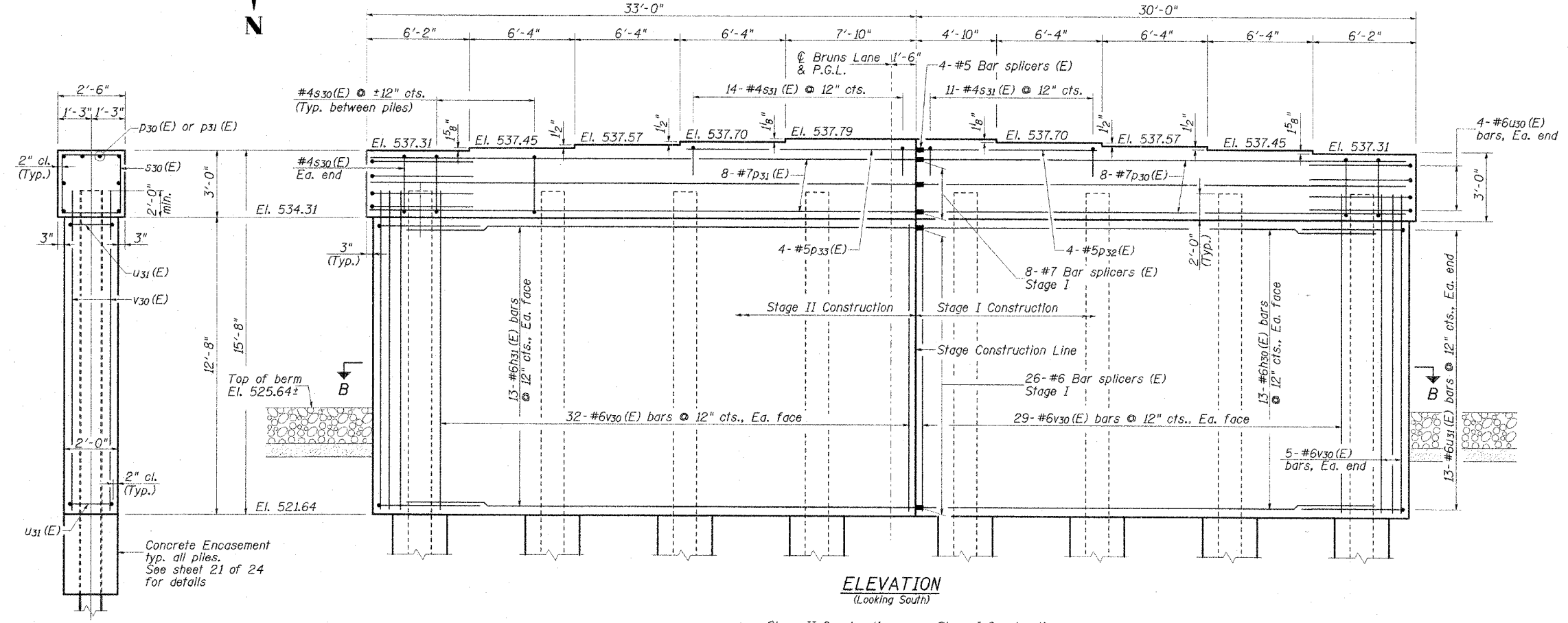
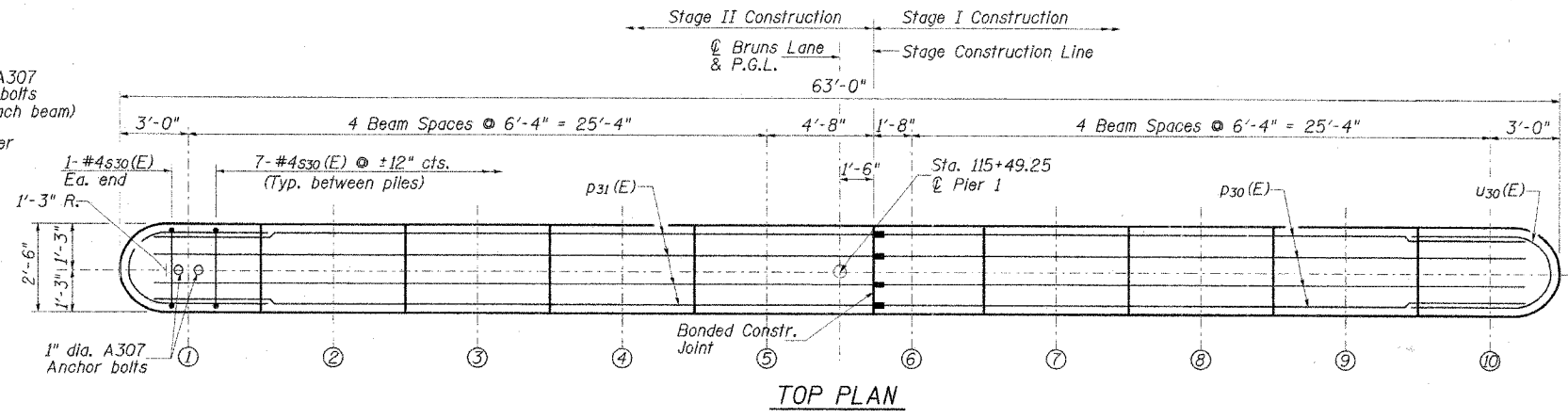
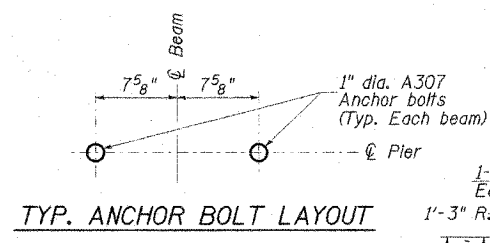
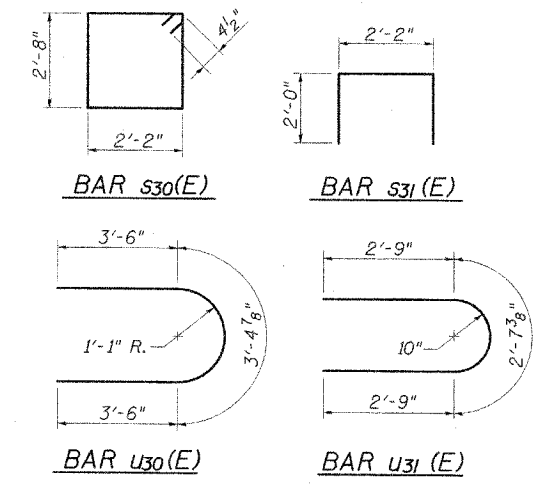


F.A.U. RTE.	SECTION *	COUNTY	TOTAL SHEETS	SHEET NO.
05-00444-00-BR		SANGAMON	33	24
STA.	TO STA.			
FED. ROAD DIST. NO.	ILLINOIS	FED. AID PROJECT		
*CITY OF SPRINGFIELD SHEET 18 OF 24 SHEETS				



PIER 1 BILL OF MATERIAL

Bar	No.	Size	Length	Shape
h30(E)	26	#6	28'-9"	—
h31(E)	26	#6	31'-9"	—
p30(E)	8	#7	28'-9"	—
p31(E)	8	#7	31'-9"	—
p32(E)	4	#5	10'-10"	—
p33(E)	4	#5	13'-10"	—
s30(E)	51	#4	10'-5"	□
s31(E)	25	#4	6'-2"	□
u30(E)	8	#6	10'-5"	—
u31(E)	26	#6	8'-2"	—
v30(E)	132	#6	14'-6"	—
Structure Excavation			Cu. Yd.	60
Concrete Structures			Cu. Yd.	76.7
Concrete Encasement			Cu. Yd.	2.8
Reinforcement Bars, Epoxy Coated			Pound	7240
Bar Splicers			Each	38
Furnishing Steel Piles, HP 12x63			Foot	336
Driving Piles			Foot	336
Test Pile Steel HP12x63			Each	1
Underwater Structure Excavation Protection - Location 1			Each	1



NOTES

1. Pour steps monolithically with cap.
2. Space reinforcement in cap to miss anchor bolts.
3. See Sheet 20 of 24 for bar splicer details.
4. See Sheet 21 of 24 for steel H-pile details.

PILE DATA

PILE TYPE AND SIZE:	HP 12x63
NOMINAL REQUIRED BEARING:	497 kips
ALLOWABLE RESISTANCE AVAILABLE:	166 kips
FACTORED RESISTANCE AVAILABLE:	248 kips
ESTIMATED PILE LENGTH:	48 Ft.
NUMBER OF PRODUCTION PILES:	7
NUMBER OF TEST PILES:	1

REVISIONS

NAME	DATE

CITY OF SPRINGFIELD, ILLINOIS
PIER 1
 FAU 8006-BRUNS LANE OVER SPRING CREEK
 SECTION 05-00444-00-BR
 SANGAMON COUNTY
 STATION 115+77.50 S.N. 084-6017
 SCALE: NONE DRAWN BY: GLD
 DATE: 6/19/07 CHECKED BY: WK



L:\Springfield\0502503\Drawings\PIER 1.dwg
 6/12/2007