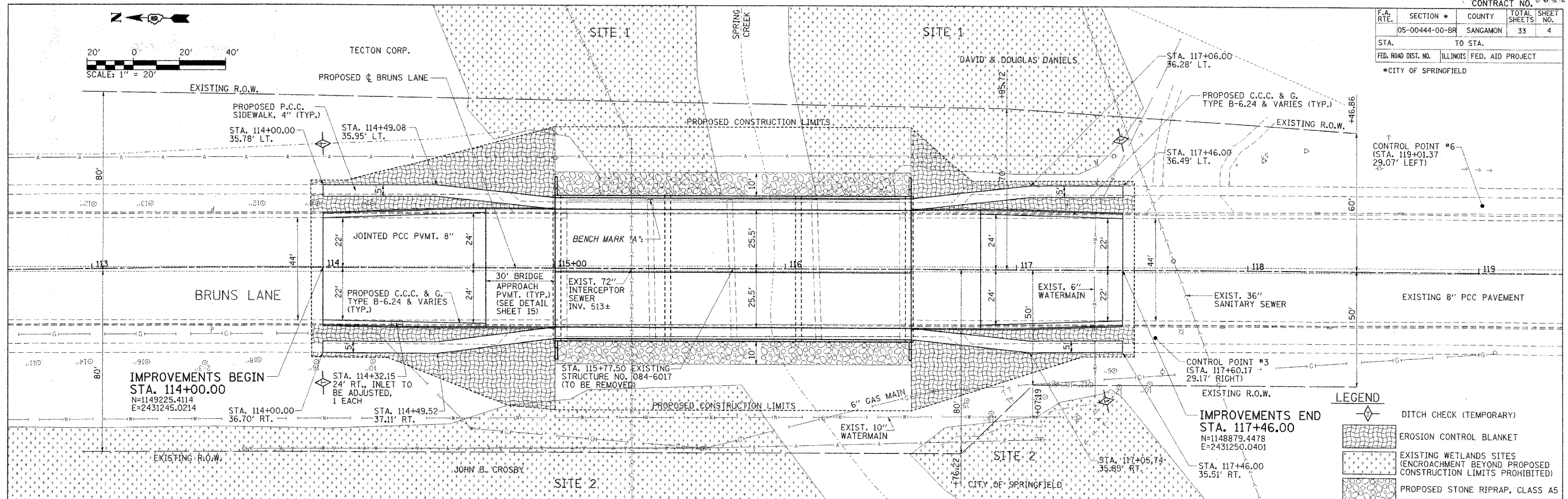
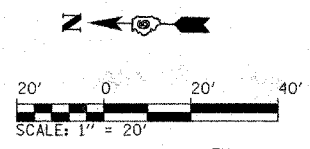


F.A. RTE.	SECTION #	COUNTY	TOTAL SHEETS	SHEET NO.
05-00444-00-BR		SANGAMON	33	4
STA.	TO STA.			
FED. ROAD DIST. NO.	ILLINOIS FED. AID PROJECT			
*CITY OF SPRINGFIELD				



IMPROVEMENTS BEGIN  
STA. 114+00.00  
N=1149225.4114  
E=2431245.0214

IMPROVEMENTS END  
STA. 117+46.00  
N=1148879.4478  
E=2431250.0401

**LEGEND**

- DITCH CHECK (TEMPORARY)
- EROSION CONTROL BLANKET
- EXISTING WETLANDS SITES (ENCROACHMENT BEYOND PROPOSED CONSTRUCTION LIMITS PROHIBITED)
- PROPOSED STONE RIPRAP, CLASS A5

DATE: \_\_\_\_\_ BY: \_\_\_\_\_

REVISIONS:

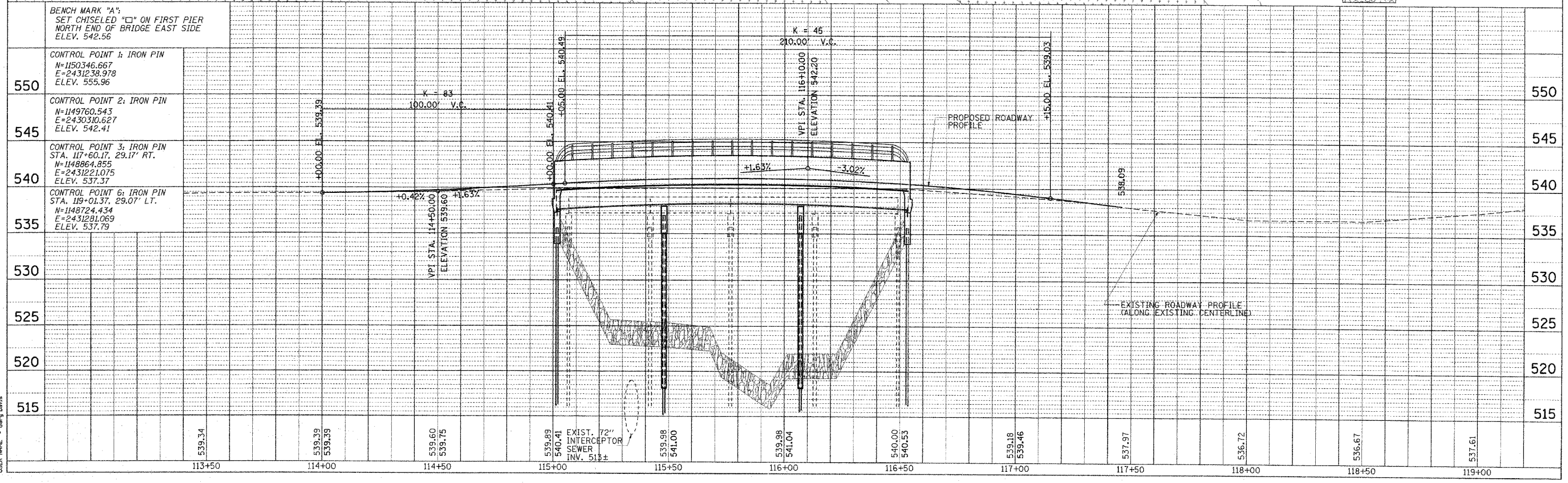
NO.	DESCRIPTION

DATE: \_\_\_\_\_ BY: \_\_\_\_\_

REVISIONS:

NO.	DESCRIPTION

PLOT DATE = 6/15/2007  
 PLOT SCALE = 20.0000"  
 USER NAME = Gerry Davis



550	BENCH MARK "A": SET CHISELED "C" ON FIRST PIER NORTH END OF BRIDGE EAST SIDE ELEV. 542.56
545	CONTROL POINT 1: IRON PIN N=1150346.667 E=2431238.978 ELEV. 555.96
540	CONTROL POINT 2: IRON PIN N=1149760.543 E=2430310.627 ELEV. 542.41
535	CONTROL POINT 3: IRON PIN STA. 117+60.17, 29.17' RT. N=1148864.855 E=2431221.075 ELEV. 537.37
530	CONTROL POINT 6: IRON PIN STA. 119+01.37, 29.07' LT. N=1148724.434 E=2431281.069 ELEV. 537.79

113+00	539.34	539.39	539.39	539.60	539.75	539.89	540.41	539.98	541.00	539.98	541.04	540.00	540.53	539.18	539.46	537.97	536.72	536.67	537.61	119+00
--------	--------	--------	--------	--------	--------	--------	--------	--------	--------	--------	--------	--------	--------	--------	--------	--------	--------	--------	--------	--------