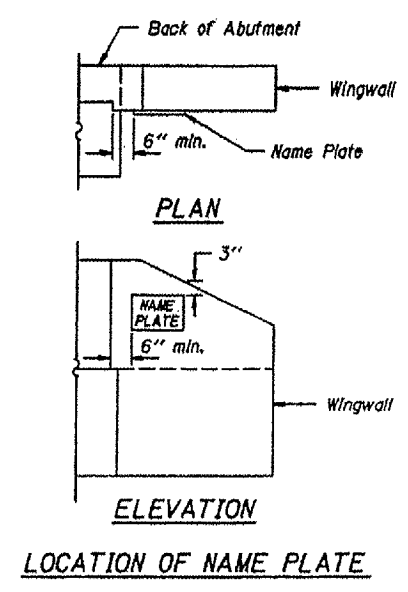


Materials: Best quality brass or bronze.  
 Border & Lettering: Raised  $\frac{1}{8}$  inch. Square cut and not tapered. Top surface polished.  
 Fastenings: Four lugs at least three inches long, cast on back of plate.



Illinois Department of Transportation

PASSED APRIL 4, 2005

Thomas J. [Signature]

Engineer of Bridge Design

APPROVED APRIL 4, 2005

Ralph E. [Signature]

Engineer of Bridges and Structures

506-1-2 (REVISED)

NAME PLATE

STANDARD CN