

ROUTE NUMBER	SECTION	COUNTY	TOTAL SHEETS	SHEET NO.
CH 16	08-00647-00-BR	LASALLE	13	2
FED. ROAD DIST. NO. 7		ILLINOIS	PROJECT BROS-099(35)	
CONTRACT NO. 87350				

SUMMARY OF QUANTITIES

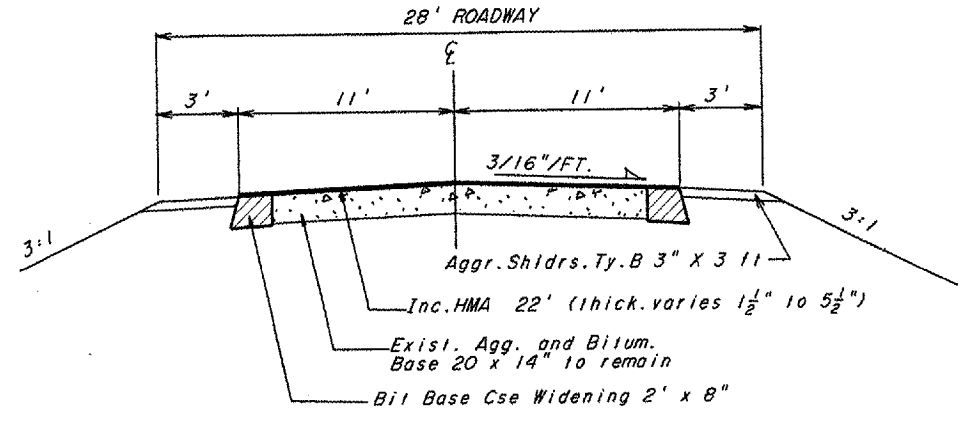
Const. Code
x087-2A

GUARDRAIL SCHEDULE

STA TO STA	LOC	REMOVE SPBGR	TBT TY-1 SP	TBT TY 6A
14+90.0 - 16+66.0	LT	176		
15+78.9 - 16+28.9	LT		1 EACH	1 EACH
16+28.9 - 16+72.64	LT			1 EACH
17+42.64 - 17+86.38	LT		1 EACH	
17+86.38 - 18+36.38	LT			1 EACH
17+33.5 - 18+60.0	LT	126.5		
14+90.0 - 16+66.0	RT	176		
15+73.61 - 16+23.61	RT		1 EACH	1 EACH
16+23.31 - 16+67.35	RT			1 EACH
17+37.36 - 17+81.10	RT		1 EACH	
17+81.10 - 18+31.10	RT			1 EACH
17+33.5 - 18+60.0	RT	126.5		
TOTAL		605	4 EACH	4 EACH

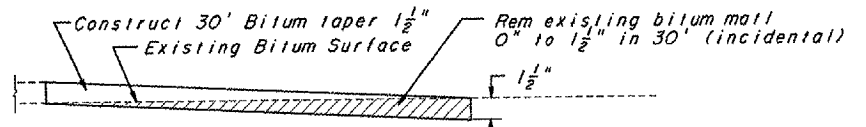
BITUM. MIXTURE REQUIREMENTS

LOCATION:	08-00647-00-BR	
MIXTURE USE:	BC WIDENING 8	INCIDENTAL HMA
PG GRADE:	PG58-22	PG64-22
MAX RAP %:	25 %	15 %
DESIGN AIR VOIDS:	4.0 % @ N50	4.0 % @ N50
MIXTURE COMPOSITION:	IL-19.0	IL-9.5
ERUCTION AGGREGATE:		MIXTURE "C"
PLANT CONTROL:	CLASS I	CLASS I



TYPICAL SECTION

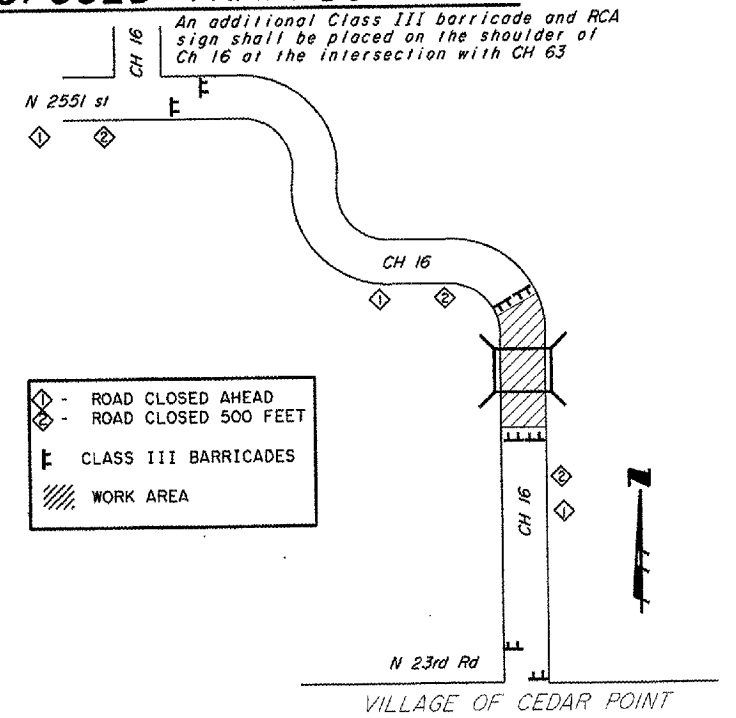
STA 16+25 to STA 18+50



BUTT JOINT DETAIL

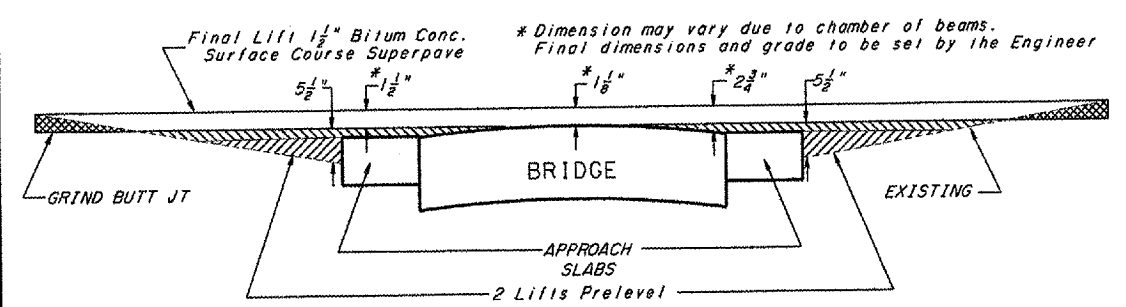
STA 16+00 AHD 73.3 SY
STA 18+50 BK 73.3 S SY

PROPOSED TRAFFIC PLAN



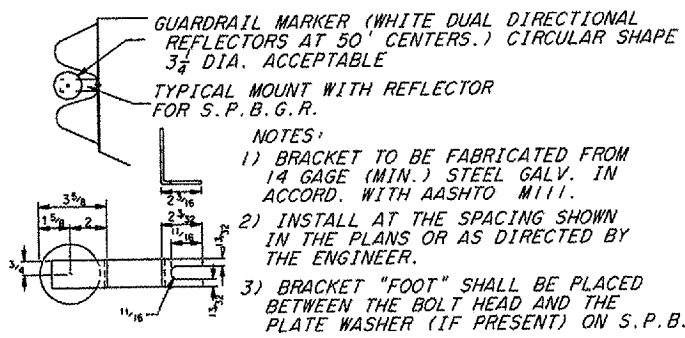
Pay Item#	Item	Unit	Quantity
25000400	NITROGEN FERT NUTR	POUND	11
25000500	PHOSPHORUS FERT NUTR	POUND	11
25000600	POTASSIUM FERT NUTR	POUND	11
* 20400800	FURNISHED EXCAV	CU YD	141
20700110	POROUS GRAN EMBANK	TON	60
21101615	TOPSOIL F & P 4	SQ YD	691
25000200	SEEDING CL 2	ACRE	0.12
25100630	EROSION CONTR BLANKET	SQ YD	691
28000400	PERIMETER EROS BAR	FOOT	300
* 28100810	STONE DMP RIP RAP C A5 SP	TON	430
28200200	FILTER FAB	SQ YD	470
31101200	SUB GRAN MAT B 4	SQ YD	84
* 35650300	BASE CSE WID 8	SQ YD	55
* 40800050	INCIDENTAL HMA SURF	TON	122
42001300	PROTECTIVE COAT	SQ YD	48
* 42001400	BR APPROACH PAVT SPL	SQ YD	80
* 48101200	AGGREGATE SHLDS B	TON	33
* 50100100	REM EXIST STRUCT	EACH	1
50300225	CONC STRUCT	CU YD	30
* 50400605	P P CONC DK BM 33 DP	SQ FT	2100
50800205	REINF BARS, EPOXY CTD	POUND	3020
50901050	STEEL BR RAIL TYPE SM	FOOT	140
51201005	FUR MET SHELL PILES 12	FOOT	440
51202305	DRIVING PILES	FOOT	440
51203200	TEST PILE MET SHELLS	EACH	2
51500100	NAME PLATES	EACH	1
58100200	WATERPRF MEMBRANE SYS	SQ YD	234
58300100	PC MORTAR FAIRING CSE	FOOT	630
63100167	TA BAR TRM TI SPL TAN	EACH	4
63100087	TRAF BAR TRM T6A	EACH	4
* 63200310	GUARDRAIL REMOV	FOOT	605
* 70101800	TRAF CONT & PROT SPL	L SUM	1
67100100	MOBILIZATION	L SUM	1

* SEE SPECIAL PROVISIONS



INCIDENTAL HMA SURFACING

GRIND BUTT JOINTS, BITUM MAT'L PRIME RC 70, PRELEVELING AND TEMPORARY PAVEMENT MARKING ARE INCIDENTAL TO "INCIDENTAL HMA SURFACING"



GUARDRAIL REFLECTOR DETAIL

8" REQUIRED @ 50' CTS INCIDENTAL TO COST OF TBT TY 1 SPEC

SUMMARY OF QUANTITIES

DRAWN DRW