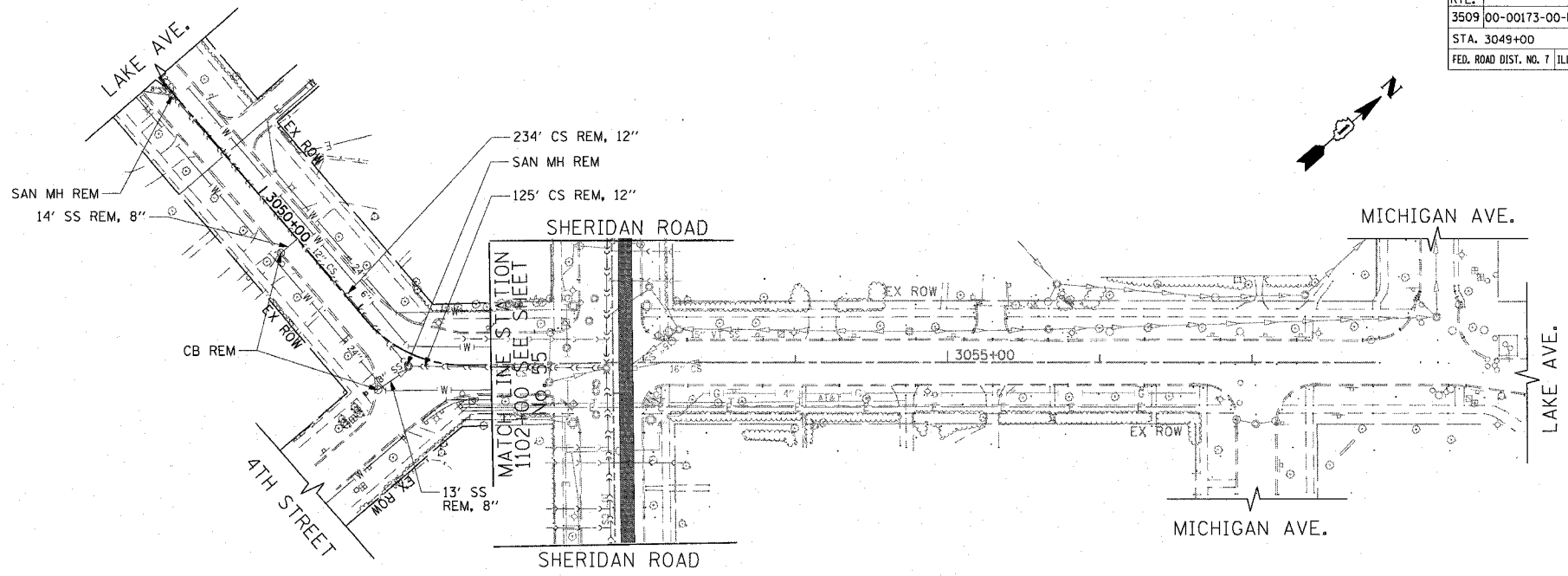
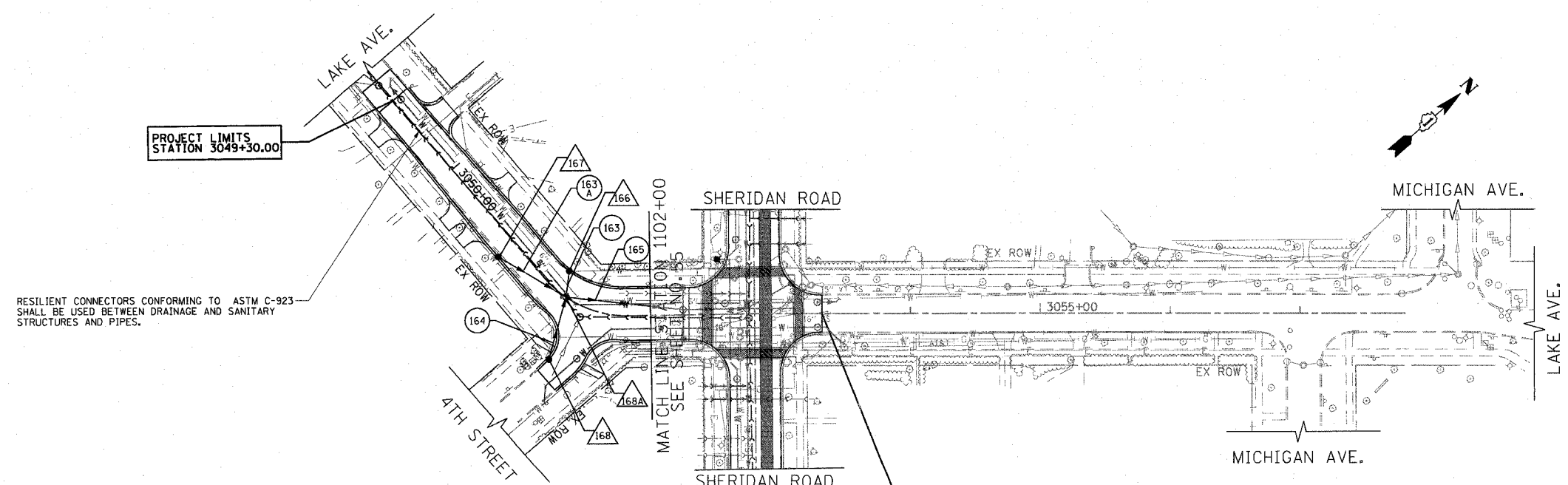


F.A.U. RTE.	SECTION	COUNTY	TOTAL SHEETS	SHEET NO.
3509	00-00173-00-FP	COOK	246	64
STA. 3049+00		TO STA. 3057+82		
FED. ROAD DIST. NO. 7		ILLINOIS FED. AID PROJECT		



EXISTING



PROPOSED

SCHEDULE OF STORM SEWER PIPES

PIPE NUMBER	ITEM	CLASS	TYPE	SIZE	LENGTH (FT)	SLOPE	TBF (CU YD)
163	SS	WM REQMTS	1	12"	20.1	1.00%	3
163A	SS	WM REQMTS	2	12"	60.0	1.00%	9
164	SS	A	1	12"	49.6	1.00%	8
165	SS	WM REQMTS	2	15"	93.1	0.90%	35

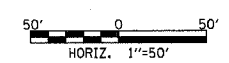
SCHEDULE OF STORM SEWER STRUCTURES

STRUCTURE NUMBER	STATION	OFFSET (FT)	TYPE	FRAME & GRATE	RIM ELEVATION	INVERT								
						NORTH	NE	EAST	SE	SOUTH	SW	WEST	NW	
166	3051+20.7	17.3'	LT	CB TYPE C	T23 F & G	604.54				600.92				
167	3050+74.5	16.5'	RT	CB TA 4 DIA	T23 F & G	604.70			600.95					
168	3051+42.1	48.0'	RT	CB TYPE C	T23 F & G	604.56								600.94
168A	3051+32.0	0.0'	RT	MH TA 5 DIA	T1 F, CL	605.03			600.23		600.44		600.35	600.72

REVISIONS	
NAME	DATE

ILLINOIS DEPARTMENT OF TRANSPORTATION
DRAINAGE & UTILITY PLAN
 LAKE AVENUE
 STATION 3049+00 TO STATION 3057+82

DATE 7/13/07
 DRAWN BY LTD
 CHECKED BY BJL



PLOT DATE = 7/12/2007
 FILE NAME = g:\CD\96\9865\Road\Sheet\util12.dwg
 PLOT SCALE = 50.0000 / 1" = 50'
 USER NAME = bjohnson

1051 PERIMETER DRIVE, SUITE 1025
 SCHUMBERG, ILLINOIS 60173
 (630) 833-9600

