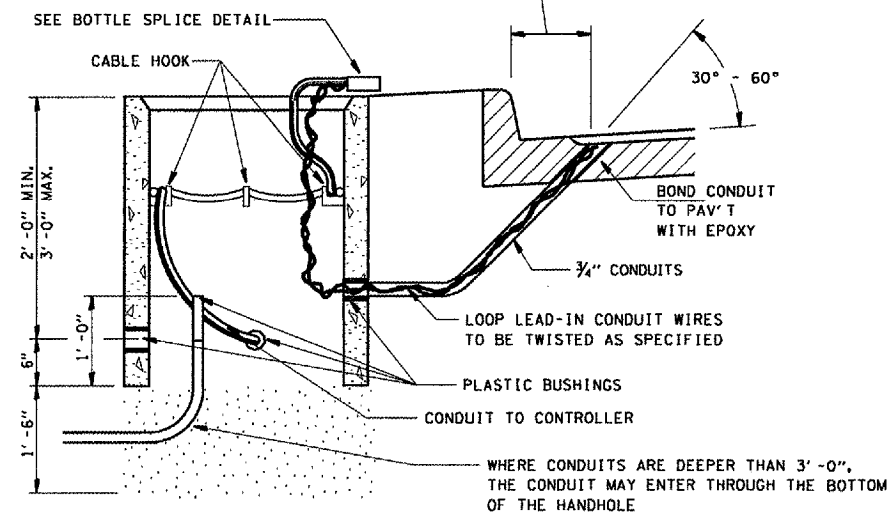


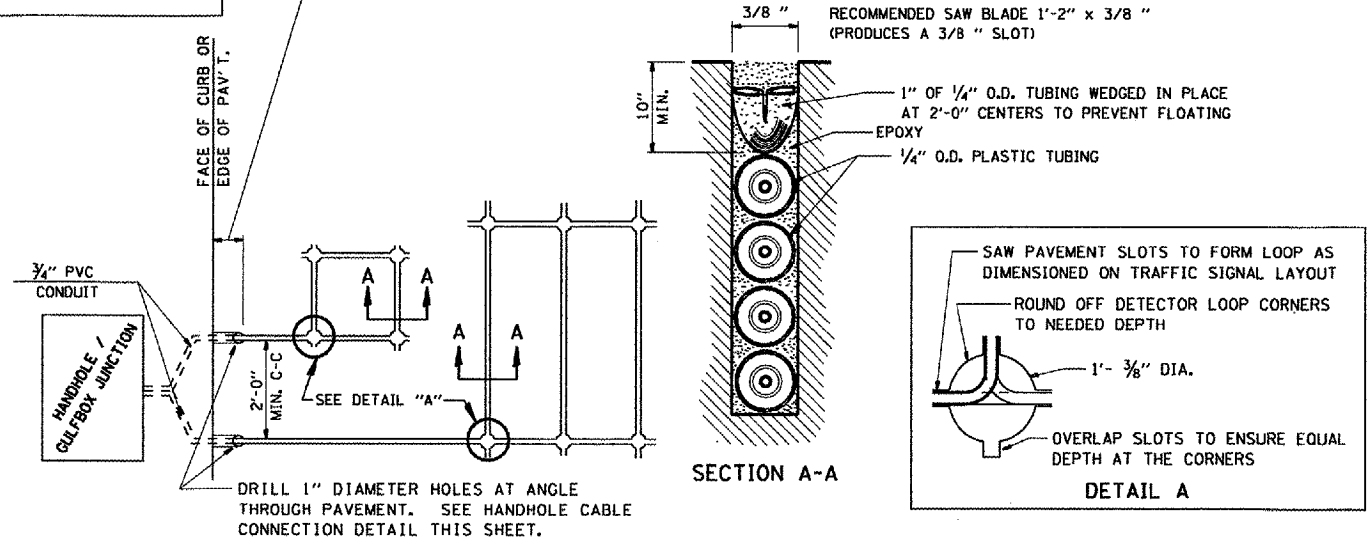
F.A.P. RTE.	SECTION	COUNTY	TOTAL SHEETS	SHEET NO.
666	SP-Z, RS-4	SANGAMON	80	77
STA.		TO STA.		
FED. ROAD DIST. NO.		ILLINOIS FED. AID PROJECT		

LENGTH OF SLACK FOR LOOP LEAD-INS SHALL PROVIDE FOR MAKING THE SPLICE ON TOP OF THE HANDHOLE AND ONE COMPLETE LOOP OF THE INTERIOR OF THE HANDHOLE, THE SPLICE SHALL BE SUPPORTED BY A CABLE HOOK.

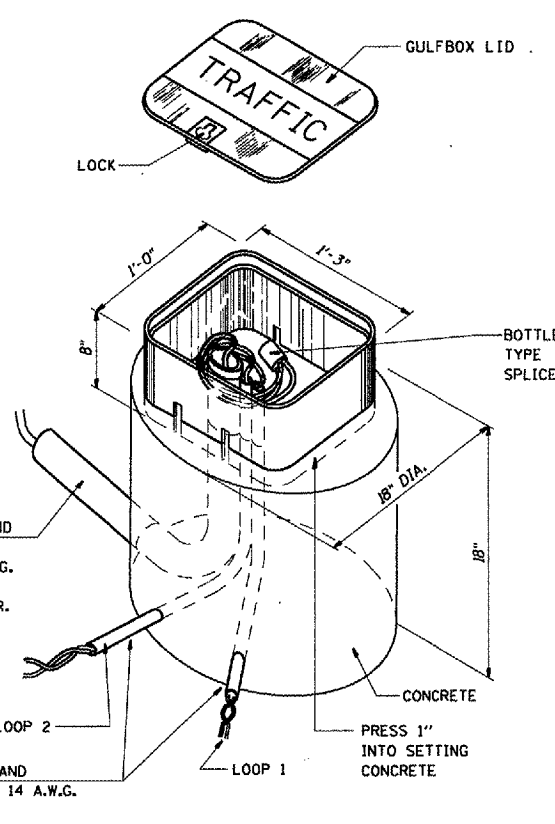
THE LOOP LEAD-IN CONDUIT HOLES SHALL BE PLACED AS CLOSE TO THE CURB AS POSSIBLE TO PERMIT SAW OVERLAP WITHOUT SCARRING FACE OF CURB. IN NON-CURB LOCATIONS THE DISTANCE SHALL NOT BE LESS THAN 6".



HANDHOLE CABLE CONNECTIONS

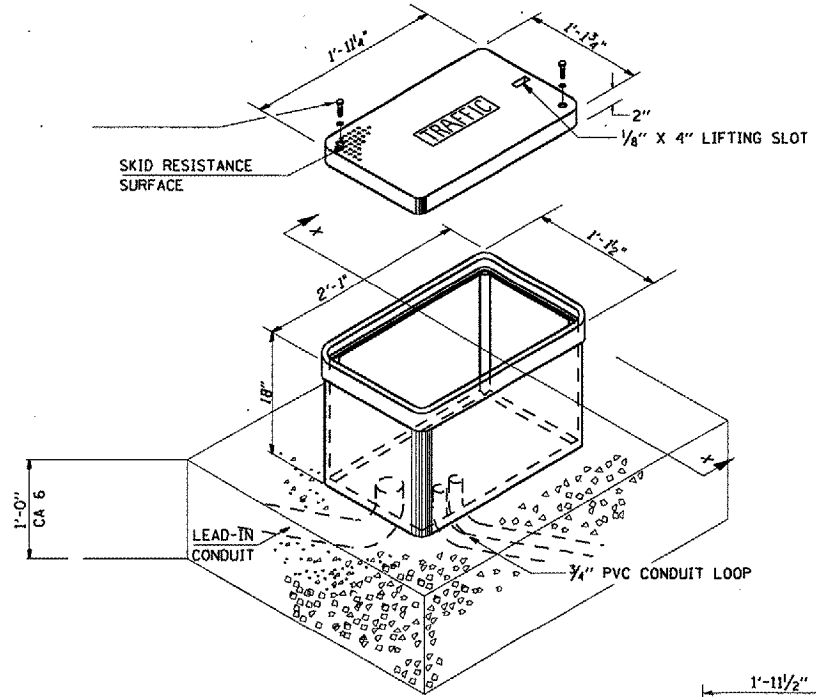


PAVEMENT SAWING DETAIL FOR TUBE ENCASED DETECTOR LOOP WIRE



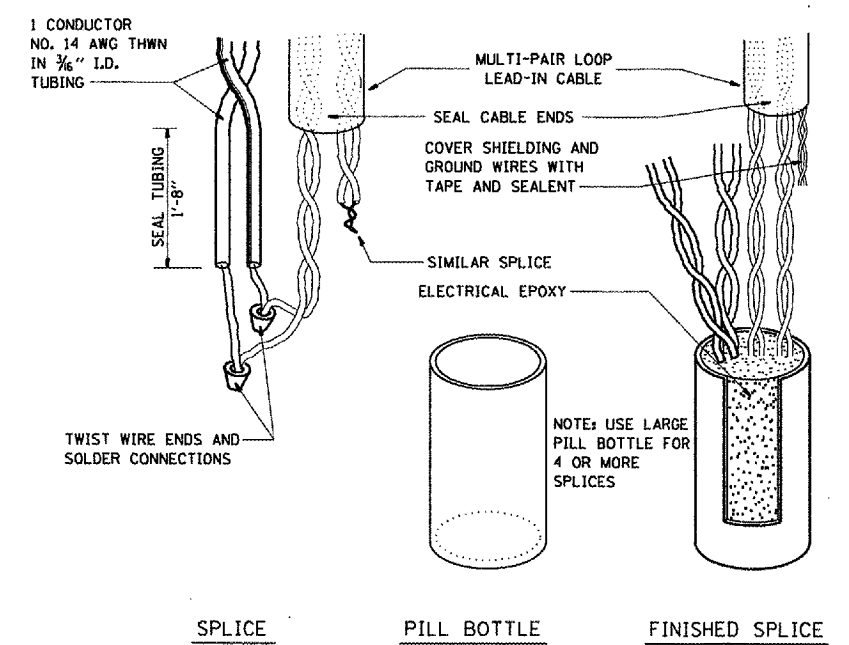
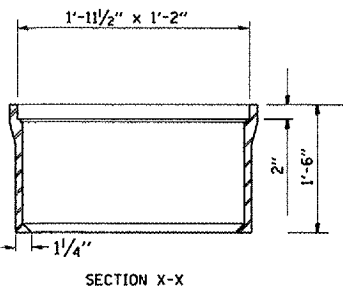
GULFBOX JUNCTION DETAIL

(SHOWING CONNECTION OF TUBE-ENCASED DETECTOR LOOP TO MULTI-PAIR LEAD-IN CABLE)



MINIMUM DIMENSIONS

JUNCTION BOX (SPECIAL)



BOTTLE SPLICE DETAIL

REVISIONS	
NAME	DATE

ILLINOIS DEPARTMENT OF TRANSPORTATION

TRAFFIC SIGNAL DETAILS

FAP ROUTE 666 (I-55 BUS/9TH STREET)

DETECTOR LOOP DETAILS

SCALE: VERT. / HORIZ.

DATE

DRAWN BY

CHECKED BY

PLOT DATE = 08/25/08
 FILE NAME = 082508
 PLOT SCALE = 1/8"=1'-0"
 USER NAME = JUSSEN