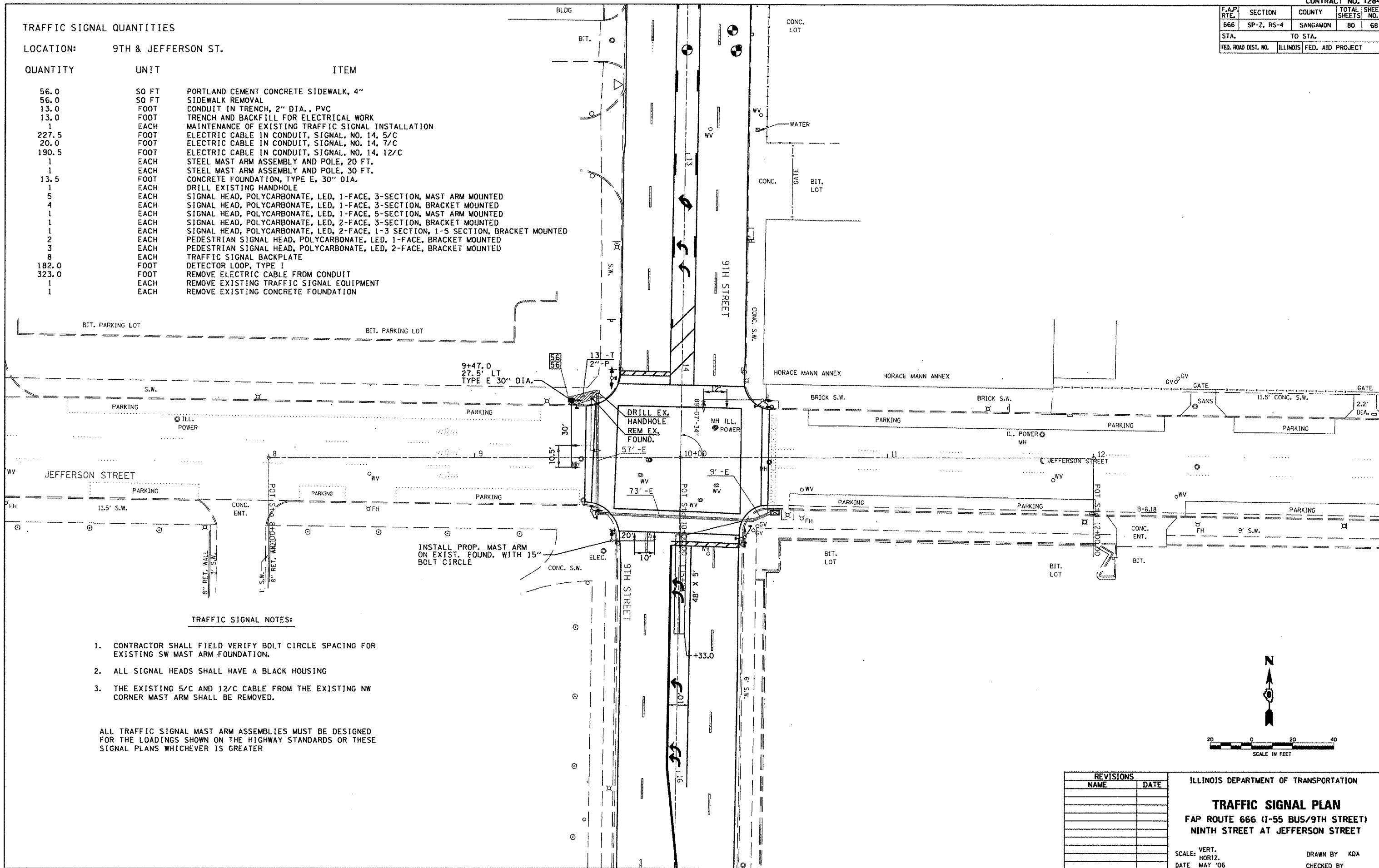


F.A.P. RTE.	SECTION	COUNTY	TOTAL SHEETS	SHEET NO.
666	SP-2, RS-4	SANGAMON	80	68
STA.		TO STA.		
FED. ROAD DIST. NO.		ILLINOIS FED. AID PROJECT		

TRAFFIC SIGNAL QUANTITIES

LOCATION: 9TH & JEFFERSON ST.

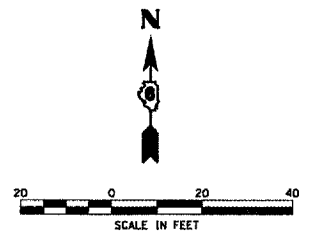
QUANTITY	UNIT	ITEM
56.0	SO FT	PORTLAND CEMENT CONCRETE SIDEWALK, 4"
56.0	SO FT	SIDEWALK REMOVAL
13.0	FOOT	CONDUIT IN TRENCH, 2" DIA., PVC
13.0	FOOT	TRENCH AND BACKFILL FOR ELECTRICAL WORK
1	EACH	MAINTENANCE OF EXISTING TRAFFIC SIGNAL INSTALLATION
227.5	FOOT	ELECTRIC CABLE IN CONDUIT, SIGNAL, NO. 14, 5/C
20.0	FOOT	ELECTRIC CABLE IN CONDUIT, SIGNAL, NO. 14, 7/C
190.5	FOOT	ELECTRIC CABLE IN CONDUIT, SIGNAL, NO. 14, 12/C
1	EACH	STEEL MAST ARM ASSEMBLY AND POLE, 20 FT.
1	EACH	STEEL MAST ARM ASSEMBLY AND POLE, 30 FT.
13.5	FOOT	CONCRETE FOUNDATION, TYPE E, 30" DIA.
1	EACH	DRILL EXISTING HANDHOLE
5	EACH	SIGNAL HEAD, POLYCARBONATE, LED, 1-FACE, 3-SECTION, MAST ARM MOUNTED
4	EACH	SIGNAL HEAD, POLYCARBONATE, LED, 1-FACE, 3-SECTION, BRACKET MOUNTED
1	EACH	SIGNAL HEAD, POLYCARBONATE, LED, 1-FACE, 5-SECTION, MAST ARM MOUNTED
1	EACH	SIGNAL HEAD, POLYCARBONATE, LED, 2-FACE, 3-SECTION, BRACKET MOUNTED
1	EACH	SIGNAL HEAD, POLYCARBONATE, LED, 2-FACE, 1-3 SECTION, 1-5 SECTION, BRACKET MOUNTED
2	EACH	PEDESTRIAN SIGNAL HEAD, POLYCARBONATE, LED, 1-FACE, BRACKET MOUNTED
3	EACH	PEDESTRIAN SIGNAL HEAD, POLYCARBONATE, LED, 1-FACE, BRACKET MOUNTED
8	EACH	TRAFFIC SIGNAL BACKPLATE
182.0	FOOT	DETECTOR LOOP, TYPE I
323.0	FOOT	REMOVE ELECTRIC CABLE FROM CONDUIT
1	EACH	REMOVE EXISTING TRAFFIC SIGNAL EQUIPMENT
1	EACH	REMOVE EXISTING CONCRETE FOUNDATION



TRAFFIC SIGNAL NOTES:

1. CONTRACTOR SHALL FIELD VERIFY BOLT CIRCLE SPACING FOR EXISTING SW MAST ARM FOUNDATION.
2. ALL SIGNAL HEADS SHALL HAVE A BLACK HOUSING
3. THE EXISTING 5/C AND 12/C CABLE FROM THE EXISTING NW CORNER MAST ARM SHALL BE REMOVED.

ALL TRAFFIC SIGNAL MAST ARM ASSEMBLIES MUST BE DESIGNED FOR THE LOADINGS SHOWN ON THE HIGHWAY STANDARDS OR THESE SIGNAL PLANS WHICHEVER IS GREATER



REVISIONS	
NAME	DATE

ILLINOIS DEPARTMENT OF TRANSPORTATION  
**TRAFFIC SIGNAL PLAN**  
 FAP ROUTE 666 (I-55 BUS/9TH STREET)  
 NINTH STREET AT JEFFERSON STREET

SCALE: VERT. \_\_\_\_\_  
 HORIZ. \_\_\_\_\_  
 DATE MAY '06

DRAWN BY KDA  
 CHECKED BY \_\_\_\_\_

PLOT DATE = 04/26/06  
 PLOT SCALE = AS SHOWN  
 USER NAME = BUSBY