

STATE OF ILLINOIS  
DEPARTMENT OF TRANSPORTATION

SURFACE TRANSPORTATION PROGRAM  
PLANS FOR RESURFACING PROJECT  
COUNTY HIGHWAY 1 (F.A.S. 929) - NEW COLUMBIA ROAD

SECTION NO. 20-00103-00-RS

MASSAC COUNTY, ILLINOIS

PROJECT NO. BGI5(883)

JOB NO. C-99-072-21

CONTRACT NO. 99739

F.A. RTE.	SECTION	COUNTY	TOTAL SHEETS	SHEET NO.
929	20-00103-00-RS	MASSAC	13	1
COUNTY UNIT ROAD DISTRICT	ILLINOIS	CONTRACT NO.	99739	

INDEX OF SHEETS

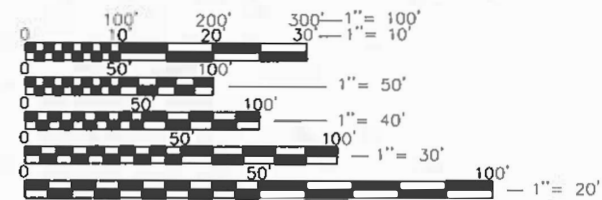
- 1 COVER SHEET
- 2 GENERAL NOTES, SCHEDULES, SUMMARY OF QUANTITIES
- 3 DETAILS
- 4 TYPICAL SECTION
- 5 PLAN STA. 0+00-14+00
- 6 PLAN STA. 14+00-28+00
- 7 PLAN STA. 28+00-42+00
- 8 PLAN STA. 42+00-56+00
- 9 PLAN STA. 56+00-70+00
- 10 PLAN STA. 70+00-84+00
- 11 PLAN STA. 84+00-98+00
- 12 PLAN STA. 98+00-112+00
- 13 PLAN STA. 112+00-122+60

HIGHWAY STANDARDS

- 701006-05 OFF-RD OPERATIONS 2L, 2W, 15' to 24" FROM PAVEMENT EDGE
- 701011-04 OFF-RD MOVING OPERATIONS 2L, 2W, DAY ONLY
- 701201-05 LANE CLOSURE, 2L, 2W, DAY ONLY FOR SPEEDS ≥ 45 MPH
- 701301-04 LANE CLOSURE 2L, 2W, SHORT TIME OPERATIONS
- 701306-04 LANE CLOSURE 2L, 2W, SLOW MOVING OPERATIONS DAY ONLY FOR SPEEDS ≥ 45 MPH
- 701311-03 LANE CLOSURE 2L, 2W MOVING OPERATIONS - DAY ONLY
- 701901-09 TRAFFIC CONTROL DEVICES
- 780001-05 TYPICAL PAVEMENT MARKINGS
- 781001-04 TYPICAL APPLICATIONS RAISED REFLECTIVE PAVEMENT MARKINGS
- BLR 22-7 TYPICAL APPLICATION OF TRAFFIC CONTROL DEVICES FOR CONSTRUCTION ON RURAL HIGHWAYS
- BLR 24-2 MAILBOX TURNOUT FOR LOCAL ROADS

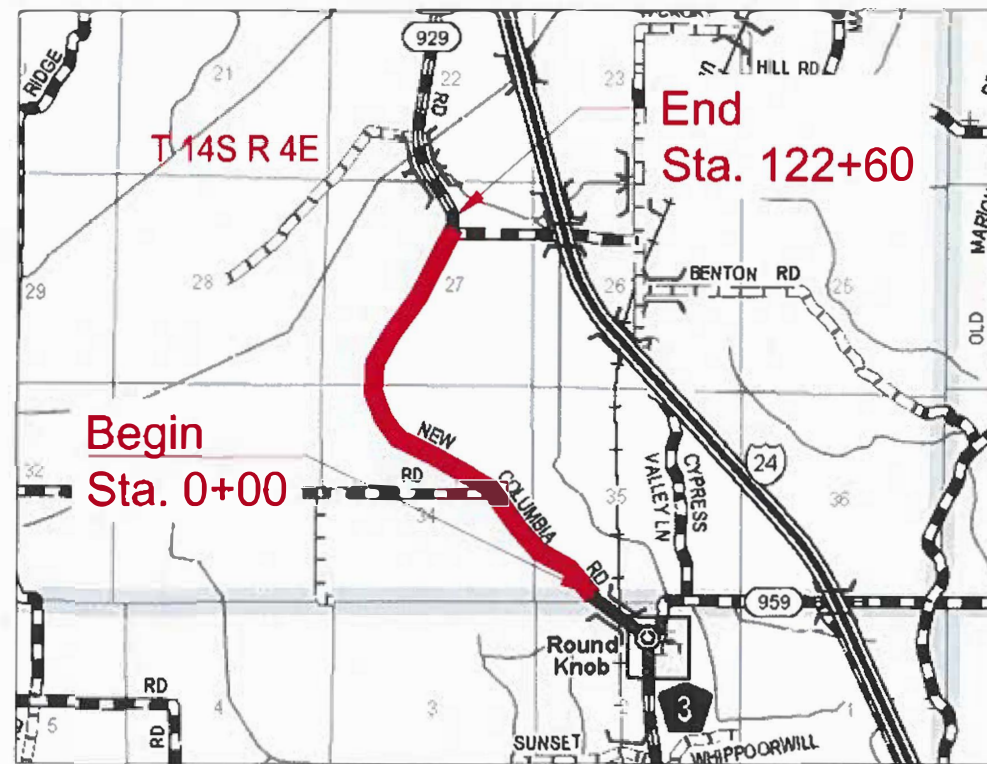
UTILITIES

Frontier Communication, Marion Illinois,  
Fort Massac Water District, Joppa, Illinois  
Southern Illinois Power Co-op, Dongola, Illinois  
AMEREN-CIPS, Marion, Illinois  
Liberty Utilities Energy, Metropolis, Illinois  
Clearwave Communications, Harrisburg, Illinois



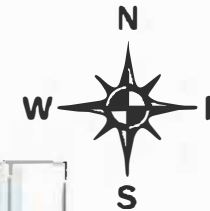
FULL SIZE PLANS HAVE BEEN PREPARED USING STANDARD ENGINEERING SCALES. REDUCED SIZED PLANS WILL NOT CONFORM TO STANDARD SCALES. IN MAKING MEASUREMENTS ON REDUCED PLANS, THE ABOVE SCALES MAY BE USED.

**J.U.L.I.E.**  
JOINT UTILITY LOCATION INFORMATION FOR EXCAVATORS  
1-800-892-0123  
OR 811



LOCATION MAP

TOTAL LENGTH OF SECTION 12,260 FT. (2.32 MILE)



FUNTIONAL CLASSIFICATION -  
2023 ADT = 650  
DESIGN SPEED = 45 MPH

STATE OF ILLINOIS  
DEPARTMENT OF TRANSPORTATION

APPROVED July 3 24

*[Signature]* COUNTY ENGINEER

*[Signature]* DISTRICT ENGINEER OF LOCAL ROADS

*[Signature]* REGION 5 DEPUTY DIRECTOR OF HIGHWAYS

Massac County Highway Department



2736 North Avenue  
Metropolis, IL 62960  
Amy N Ferris, P.E.  
County Engineer



EXPIRES: 11/30/25

## General Notes

1. WHEREVER IN THE PLANS OR SPECIFICATIONS THE TERM STANDARD SPECIFICATIONS IS USED, IT SHALL BE UNDERSTOOD BY THE CONTRACTOR TO MEAN THE STANDARD SPECIFICATIONS FOR ROAD AND BRIDGE CONSTRUCTION AS PREPARED BY THE DEPARTMENT OF TRANSPORTATION OF THE STATE OF ILLINOIS AND ADOPTED APRIL 1, 2022.
2. EXISTING ROAD SIGNS THAT CONFLICT WITH CONSTRUCTION OPERATIONS SHALL BE COVERED OR REMOVED AS DIRECTED BY THE ENGINEER, THIS WORK WILL NOT BE PAID FOR SEPARATELY BUT SHALL BE INCLUDED IN THE COST OF THE CONTRACT PAY ITEMS AND NO ADDITIONAL COMPENSATION WILL BE ALLOWED TO THE CONTRACTOR.
3. THE CONTRACTOR SHALL TAKE REASONABLE PRECAUTIONS TO PROTECT PUBLIC AND PRIVATE PROPERTY. IF AT ANY TIME THE CONTRACTOR DAMAGES OR DESTROYS PUBLIC OR PRIVATE PROPERTY, THE CONTRACTOR SHALL, AT HIS OWN EXPENSE, RESTORE SUCH PROPERTY TO A CONDITION EQUAL TO THAT EXISTING BEFORE SUCH DAMAGE.
4. THE CONTRACTOR SHALL NOTIFY THE MASSAC COUNTY HIGHWAY DEPARTMENT RESIDENT ENGINEER AND THE COUNTY ENGINEER 72 HOURS IN ADVANCE OF CONSTRUCTION WORK.
5. IF TEMPORARY RAMPS ARE NEEDED AT PRIVATE ENTRANCES TO MAINTAIN ACCESS, THESE SHALL BE PROVIDED BY THE CONTRACTOR. THE TEMPORARY RAMPS FOR PRIVATE ENTRANCES WILL NOT BE PAID FOR SEPARATELY BUT CONSIDERED INCIDENTAL TO THE PAVING PAY ITEMS.

## Summary of Quantities

Code Number	Item	Unit of Measure	Quantity
40600290	BITUMINOUS MATERIALS TACK COAT	POUND	20500
40600370	LONG JOINT SEALANT	POUND	10800
40600982	HOT-MIX ASPHALT SURFACE REMOVAL - BUTT JOINT	SQ YD	300
40602970	HOT-MIX ASPHALT BINDER CCOURSE IL-9.5FG N70	TON	2150
40604002	HOT-MIX ASPHALT SURFACE COURSE IL-9.5 FG N70	TON	2300
48101200	AGGREGATE SHOULDERS, TYPE B	TON	1350
67100100	MOBILIZATION	LSUM	1
70300100	SHORT TERM PAVEMENT MARKING	FOOT	2500
* 78001110	PAINT PAVEMENT MARKING - LINE 4	FOOT	43010
* 78000180	PAINT PAVEMENT MARKING - LINE 24	FOOT	26
* 78100100	RAISED REFLECTIVE PAVEMENT MARKER	EACH	160
X7010216	TRAFFIC CONTROL & PROTECTION, SPECIAL	LSUM	1

### Striping Schedule

Stationing		Quantities in FEET					
from	to	white	yellow				Total
station	station	edge	no passing double	no passing left	no passing right	dash center	
0+00	15+80	3160	3160				3160
15+80	24+80	1800		900		230	1130
24+80	34+20	1880			940	240	1180
34+20	45+00	2160	2160				2160
45+00	54+30	1860		930		240	1170
54+30	64+00	1940			970	250	1220
64+00	88+60	4920	4920				4920
88+60	97+50	1780		890		230	1120
97+50	108+50	2200				280	280
108+50	117+50	1800			900	230	1130
117+50	122+60	1020	1020				1020
Total		24520	11260	2720	2810	1700	18490

Transitions		
Location	Area (SY)	Tons of Surface
Mermet Road	300	34
Benton Road	215	24
10+50	75	8
11+00	30	3
44+00	25	3
45+00	30	3
73+00	30	3
83+00	40	4
84+50	15	2
95+00	75	8
109+50	50	6

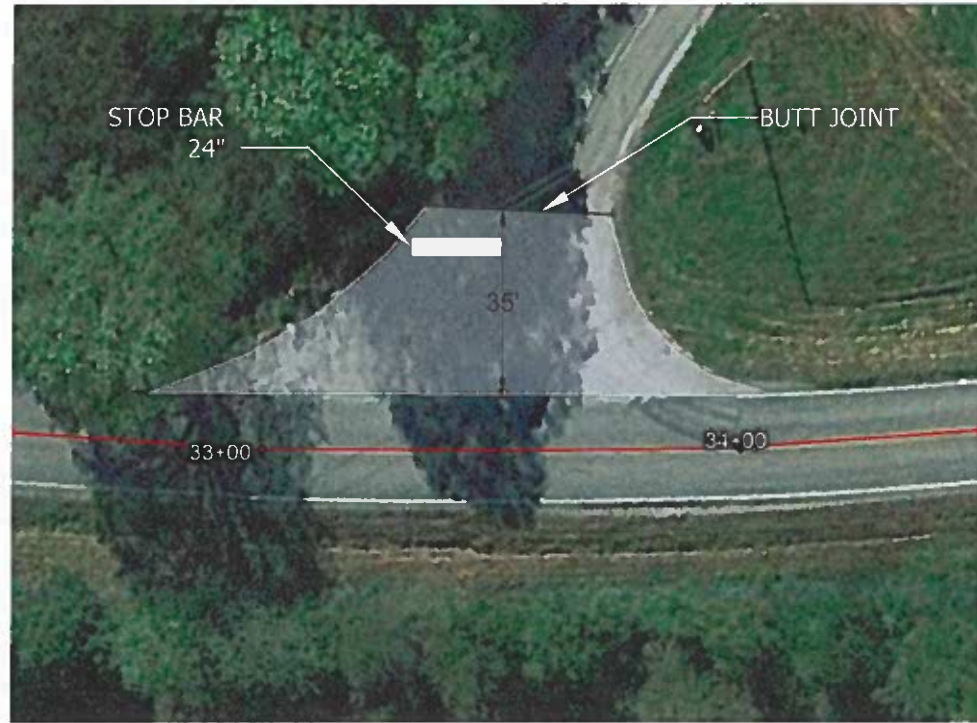
DESIGNED - A. FERRIS	REVISED -
DRAWN - A. FERRIS	REVISED -
CHECKED - A. FERRIS	REVISED -
DATE - 6/5/2024	REVISED -



**Massac County Highway Department**  
 2736 North Avenue, Metropolis, IL 62960  
 Amy N Ferris, P.E., County Engineer

**COUNTY HIGHWAY 1 (F.A.S. 929) - NEW COLUMBIA ROAD**  
 General Notes/Schedules/Summary of Quantities

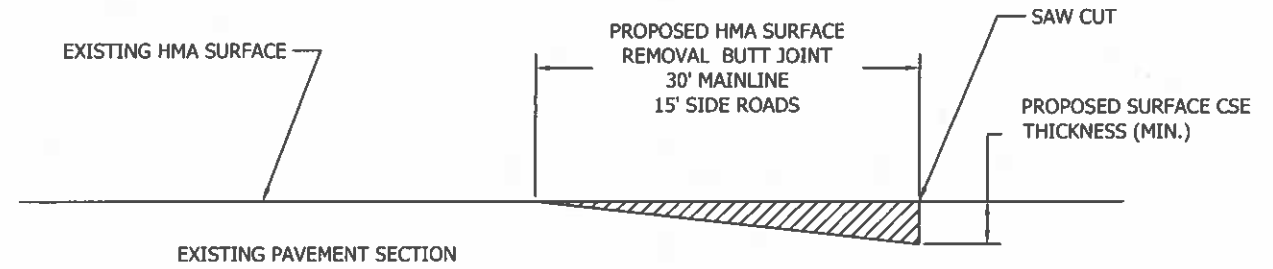
F.A.U. RTE.	SECTION	COUNTY	TOTAL SHEETS	SHEET NO.
929	20-00103-00-RS	MASSAC	2	13
COUNTY UNIT ROAD DISTRICT		CONTRACT NO. 99739		
ILLINOIS		LOCAL AGENCY PROJECT		



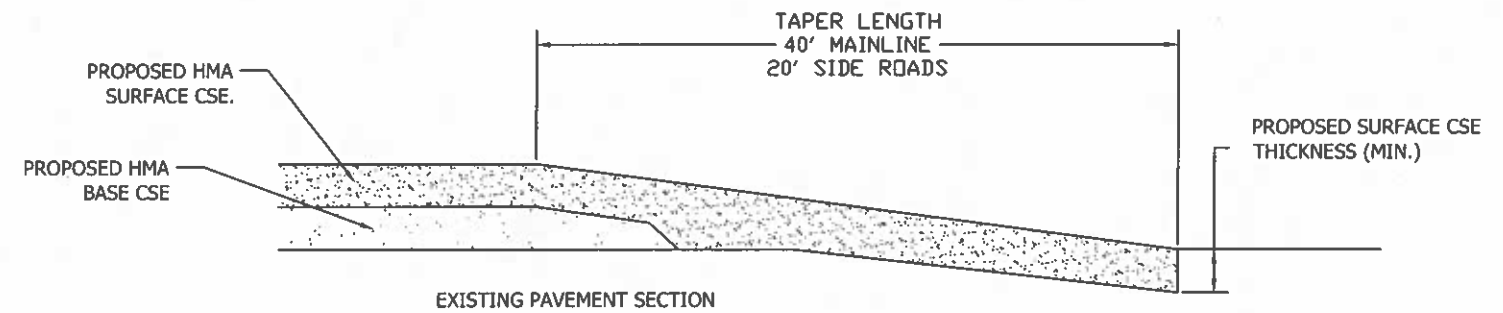
**Mermet Road Intersection Detail**  
N.T.S.



**Benton Road Intersection Detail**  
N.T.S.



1. SAW CUTS SHALL BE INCIDENTAL TO THE PAY ITEM HMA SURFACE REMOVAL - BUTT JOINT
2. TEMPORARY RAMS ARE TO BE INSTALLED IMMEDIATELY AFTER CUTTING IN THE BUTT JOINTS, AND THE COST OF INSTALLATION AND MAINTENANCE OF THE TEMPORARY RAMS SHALL ALSO BE INCIDENTAL TO THE PAY ITEM HMA SURFACE REMOVAL - BUTT JOINT



## **BUTT-JOINT AND TAPER FOR HMA RESURFACING**

SCALE: N.T.S.

DESIGNED - A. FERRIS	REVISED -
DRAWN - A. FERRIS	REVISED -
CHECKED - A. FERRIS	REVISED -
DATE - 6/5/2024	REVISED -



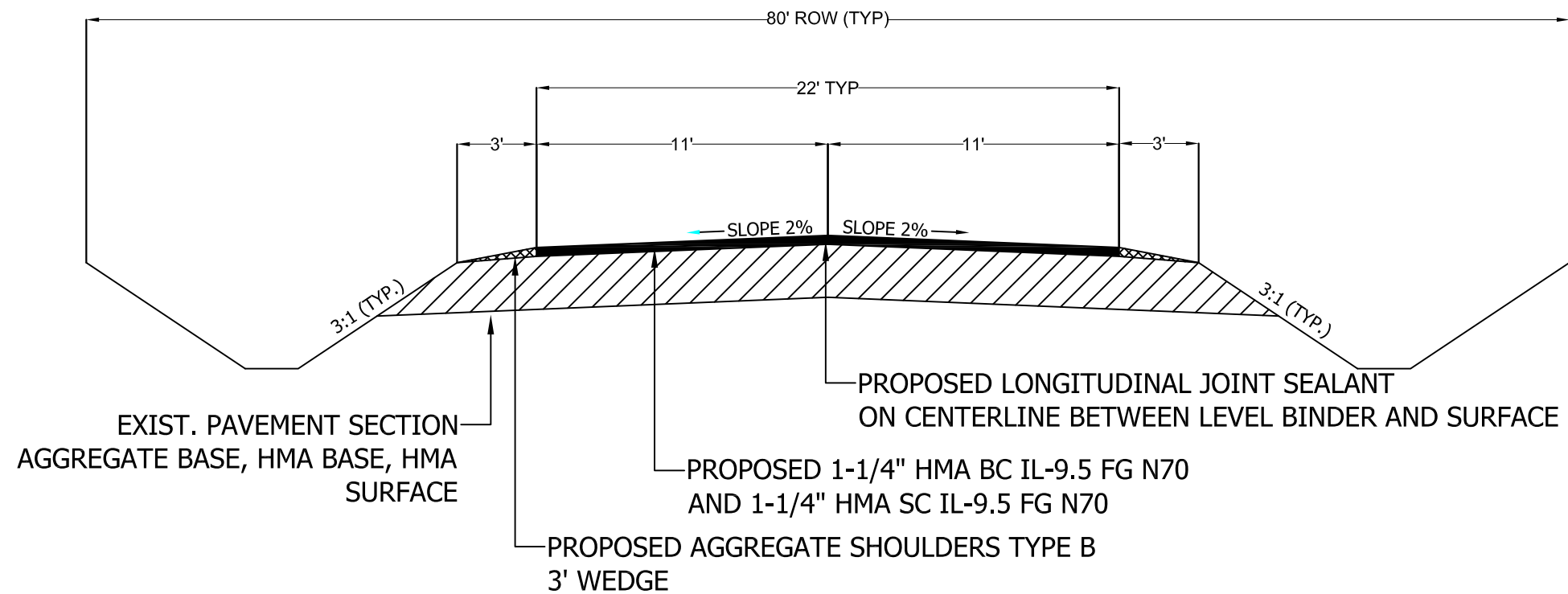
**Massac County Highway Department**

2736 North Avenue, Metropolis, IL 62960  
Amy N Ferris, P.E., County Engineer

**COUNTY HIGHWAY 1 (F.A.S. 929) - NEW COLUMBIA ROAD**

**Details**

F.A.U. RTE.	SECTION	COUNTY	TOTAL SHEETS	SHEET NO.
929	20-00103-00-RS	MASSAC	3	13
COUNTY UNIT ROAD DISTRICT		CONTRACT NO. 99739		
ILLINOIS		LOCAL AGENCY PROJECT		



## TYPICAL SECTION

SCALE: N.T.S.

## STRUCTURAL DESIGN DATA / HMA MIX REQUIREMENTS

ADT: 650  
 DESIGN PERIOD: 20  
 [MAX.] PV=572 SU=46 MU=32  
 CLASSIFICATION: CLASS III RURAL MAJOR COLLECTOR

HMA SURFACE COURSE IL9.5 FG N70  
 RAP % (MAX.): 10%  
 DESIGN AIR VOIDS: 3%  
 FRICTION AGGREGATE: MIXTURE C  
 MIXTURE COMPOSITION: IL9.5 FG  
 PG GRADE: PG 64-22

DESIGNED	- A. FERRIS	REVISED	-
DRAWN	- A. FERRIS	REVISED	-
CHECKED	- A. FERRIS	REVISED	-
DATE	- 6/5/2024	REVISED	-

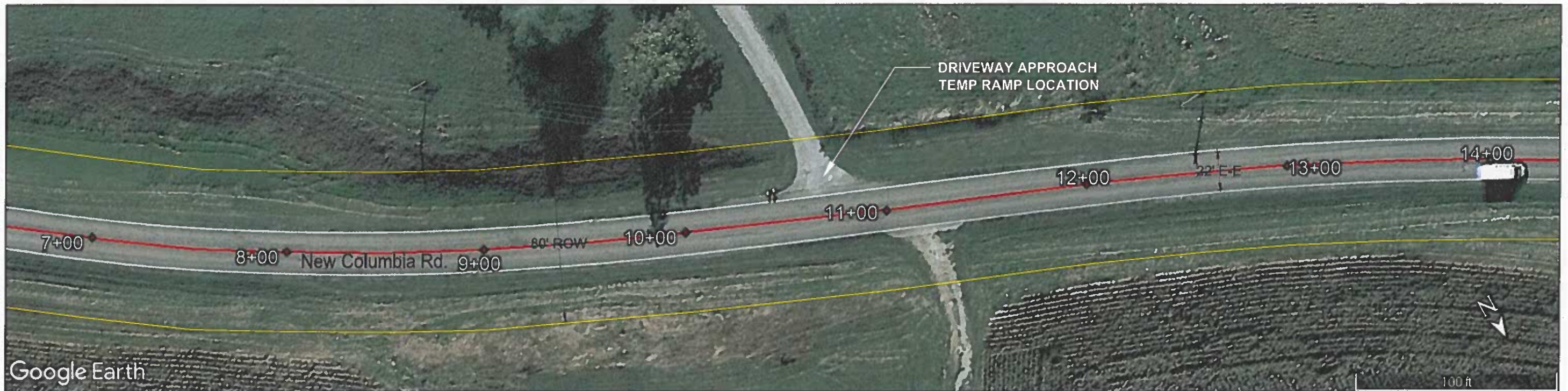
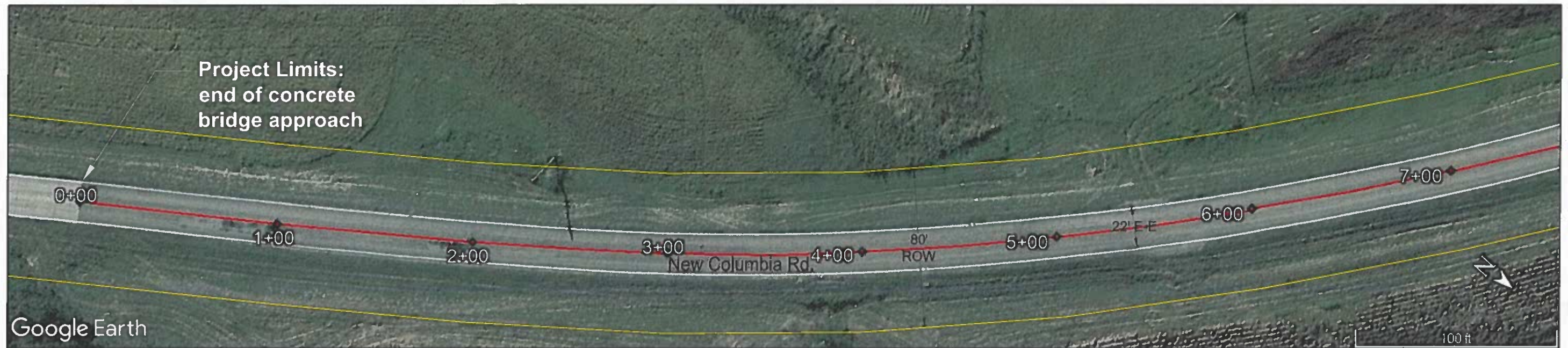


**Massac County Highway Department**

2736 North Avenue, Metropolis, IL 62960  
 Amy N Ferris, P.E., County Engineer

**COUNTY HIGHWAY 1 (F.A.S. 929) - NEW COLUMBIA ROAD**  
 Typical Section

F.A.U. RTE.	SECTION	COUNTY	TOTAL SHEETS	SHEET NO.
929	20-00103-00-RS	MASSAC	4	13
COUNTY UNIT ROAD DISTRICT		CONTRACT NO. 99739		
ILLINOIS		LOCAL AGENCY PROJECT		



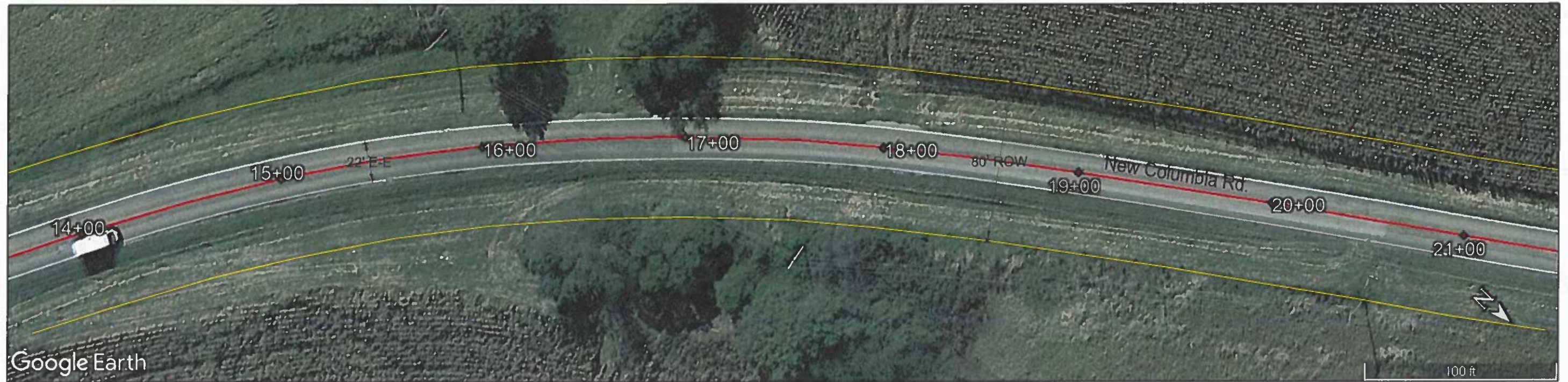
DESIGNED - A. FERRIS	REVISED -
DRAWN - A. FERRIS	REVISED -
CHECKED - A. FERRIS	REVISED -
DATE - 6/5/2024	REVISED -



**Massac County Highway Department**  
 2736 North Avenue, Metropolis, IL 62960  
 Amy N Ferris, P.E., County Engineer

**COUNTY HIGHWAY 1 (F.A.S. 929) - NEW COLUMBIA ROAD**  
 Plan Station 0+00 - 14+00  
 Scale: 1" = 50'-0"

F.A.U. RTE.	SECTION	COUNTY	TOTAL SHEETS	SHEET NO.
929	20-00103-00-RS	MASSAC	5	13
COUNTY UNIT ROAD DISTRICT		CONTRACT NO. 99739		
ILLINOIS		LOCAL AGENCY PROJECT		



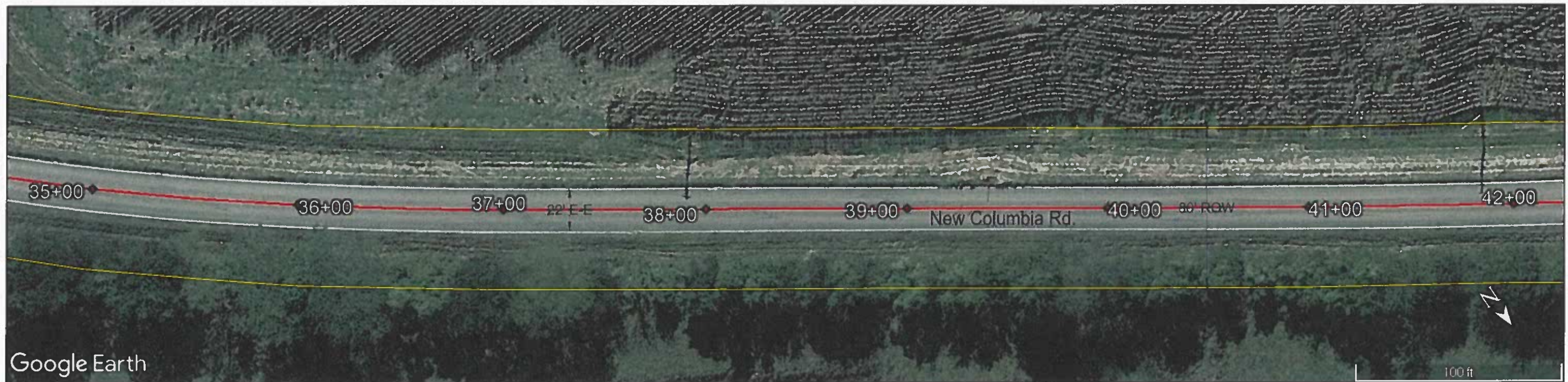
DESIGNED - A. FERRIS	REVISED -
DRAWN - A. FERRIS	REVISED -
CHECKED - A. FERRIS	REVISED -
DATE - 6/5/2024	REVISED -



**Massac County Highway Department**  
 2736 North Avenue, Metropolis, IL 62960  
 Amy N Ferris, P.E., County Engineer

**COUNTY HIGHWAY 1 (F.A.S. 929) - NEW COLUMBIA ROAD**  
 Plan Station 14+00 - 28+00  
 Scale: 1" = 50'-0"

F.A.U. RTE.	SECTION	COUNTY	TOTAL SHEETS	SHEET NO.
929	20-00103-00-RS	MASSAC	6	13
COUNTY UNIT ROAD DISTRICT		CONTRACT NO. 99739		
ILLINOIS		LOCAL AGENCY PROJECT		



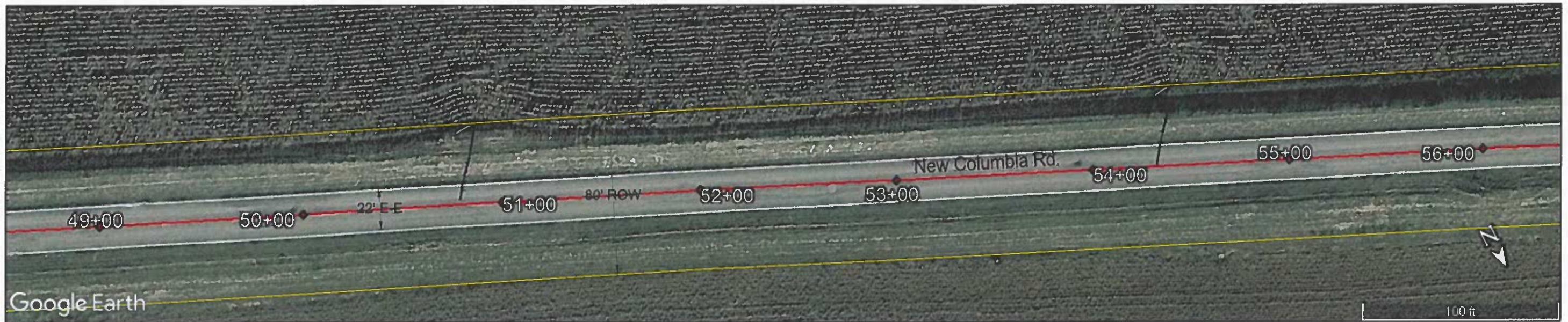
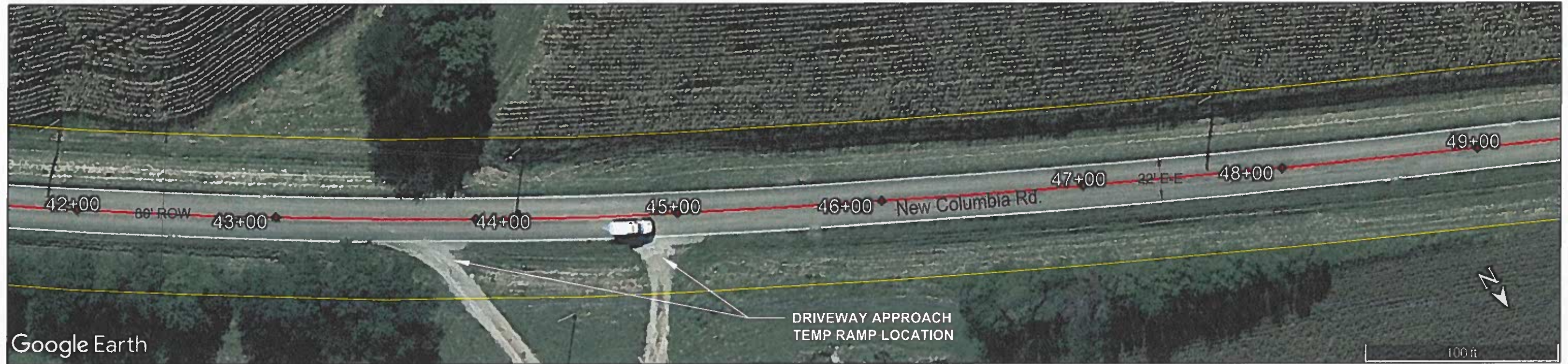
DESIGNED - A. FERRIS	REVISED -
DRAWN - A. FERRIS	REVISED -
CHECKED - A. FERRIS	REVISED -
DATE - 6/5/2024	REVISED -



**Massac County Highway Department**  
 2736 North Avenue, Metropolis, IL 62960  
 Amy N Ferris, P.E., County Engineer

**COUNTY HIGHWAY 1 (F.A.S. 929) - NEW COLUMBIA ROAD**  
 Plan Station 28+00 - 42+00  
 Scale: 1" = 50'-0"

F.A.U. RTE.	SECTION	COUNTY	TOTAL SHEETS	SHEET NO.
929	20-00103-00-RS	MASSAC	7	13
COUNTY UNIT ROAD DISTRICT		CONTRACT NO. 99739		
ILLINOIS		LOCAL AGENCY PROJECT		



DESIGNED - A. FERRIS	REVISED -
DRAWN - A. FERRIS	REVISED -
CHECKED - A. FERRIS	REVISED -
DATE - 6/5/2024	REVISED -

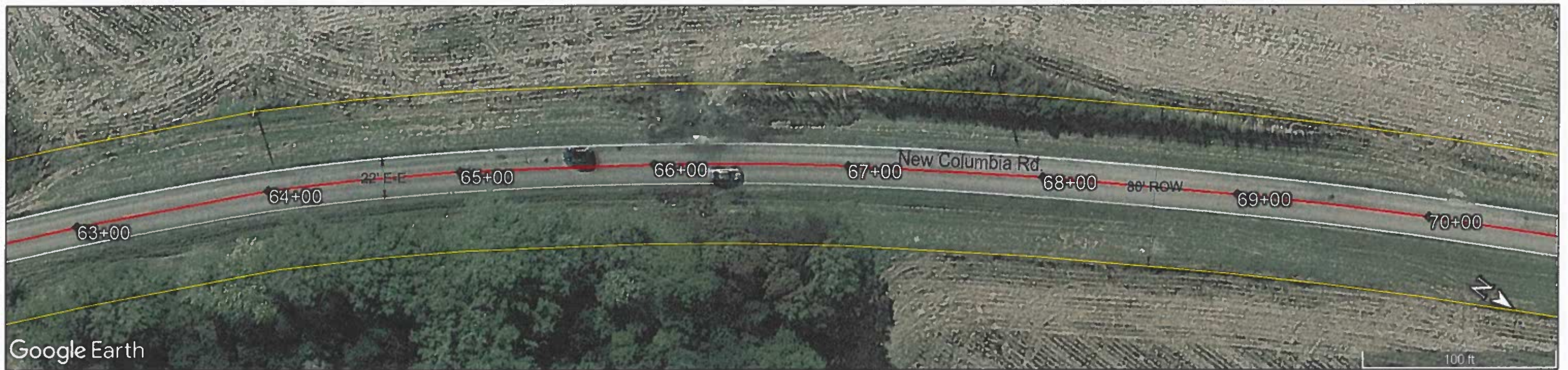
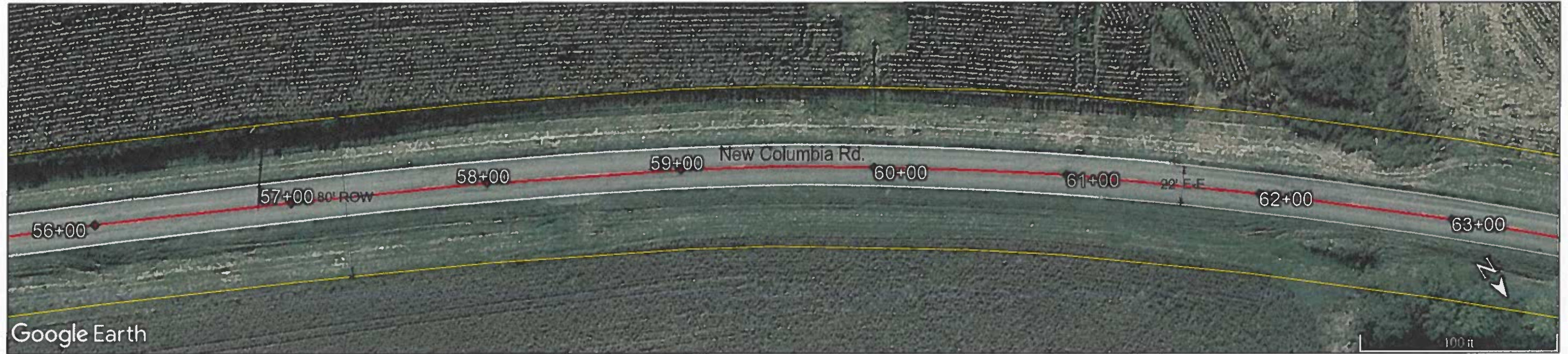


**Massac County Highway Department**  
 2736 North Avenue, Metropolis, IL 62960  
 Amy N Ferris, P.E., County Engineer

**COUNTY HIGHWAY 1 (F.A.S. 929) - NEW COLUMBIA ROAD**  
 Plan Station 42+00 - 56+00  
 Scale: 1" = 50'-0"

F.A.U. RTE.	SECTION	COUNTY	TOTAL SHEETS	SHEET NO.
929	20-00103-00-RS	MASSAC	8	13
COUNTY UNIT ROAD DISTRICT		CONTRACT NO. 99739		
ILLINOIS		LOCAL AGENCY PROJECT		





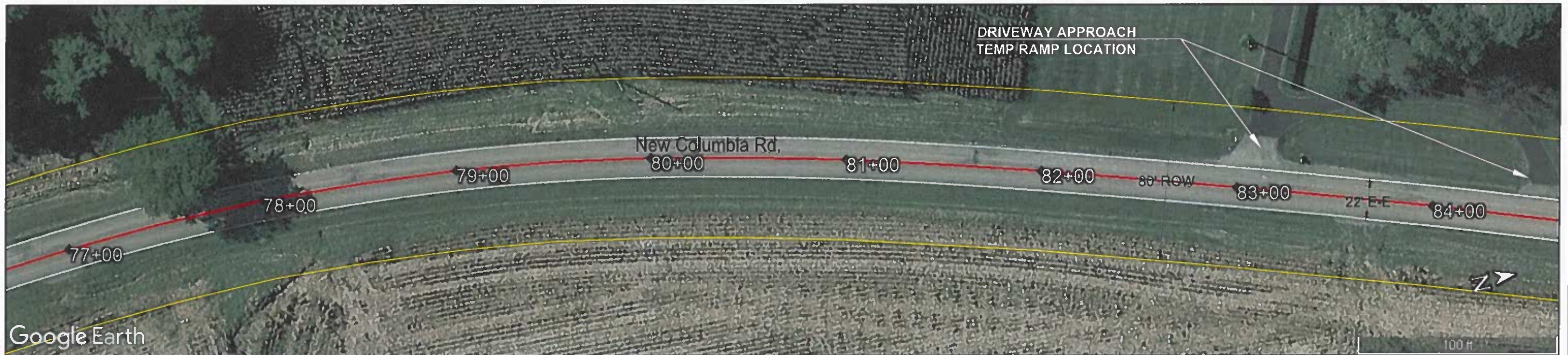
DESIGNED - A. FERRIS	REVISED -
DRAWN - A. FERRIS	REVISED -
CHECKED - A. FERRIS	REVISED -
DATE - 6/5/2024	REVISED -




**Massac County Highway Department**  
 2736 North Avenue, Metropolis, IL 62960  
 Amy N Ferris, P.E., County Engineer

**COUNTY HIGHWAY 1 (F.A.S. 929) - NEW COLUMBIA ROAD**  
 Plan Station 56+00 - 70+00  
 Scale: 1" = 50'-0"

F.A.U. RTE.	SECTION	COUNTY	TOTAL SHEETS	SHEET NO.
929	20-00103-00-RS	MASSAC	9	13
COUNTY UNIT ROAD DISTRICT		CONTRACT NO. 99739		
ILLINOIS		LOCAL AGENCY PROJECT		

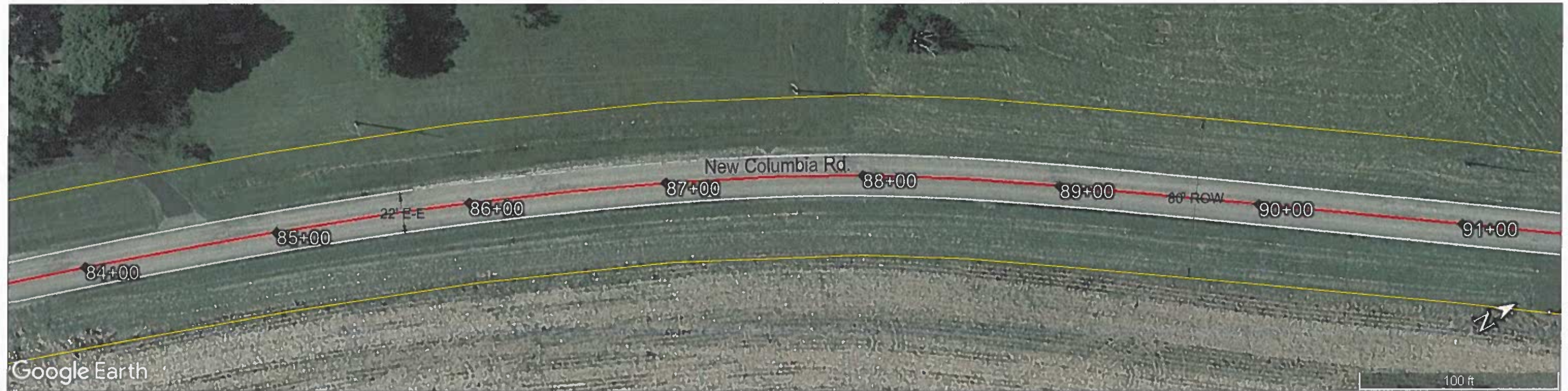


DESIGNED - A. FERRIS	REVISED -
DRAWN - A. FERRIS	REVISED -
CHECKED - A. FERRIS	REVISED -
DATE - 6/5/2024	REVISED -


**Massac County Highway Department**  
 2736 North Avenue, Metropolis, IL 62960  
 Amy N Ferris, P.E., County Engineer

**COUNTY HIGHWAY 1 (F.A.S. 929) - NEW COLUMBIA ROAD**  
 Plan Station 70+00 - 84+00  
 Scale: 1" = 50'-0"

F.A.U. RTE. 929	SECTION 20-00103-00-RS	COUNTY MASSAC	TOTAL SHEETS 10	SHEET NO. 13
COUNTY UNIT ROAD DISTRICT ILLINOIS		CONTRACT NO. 99739 LOCAL AGENCY PROJECT		



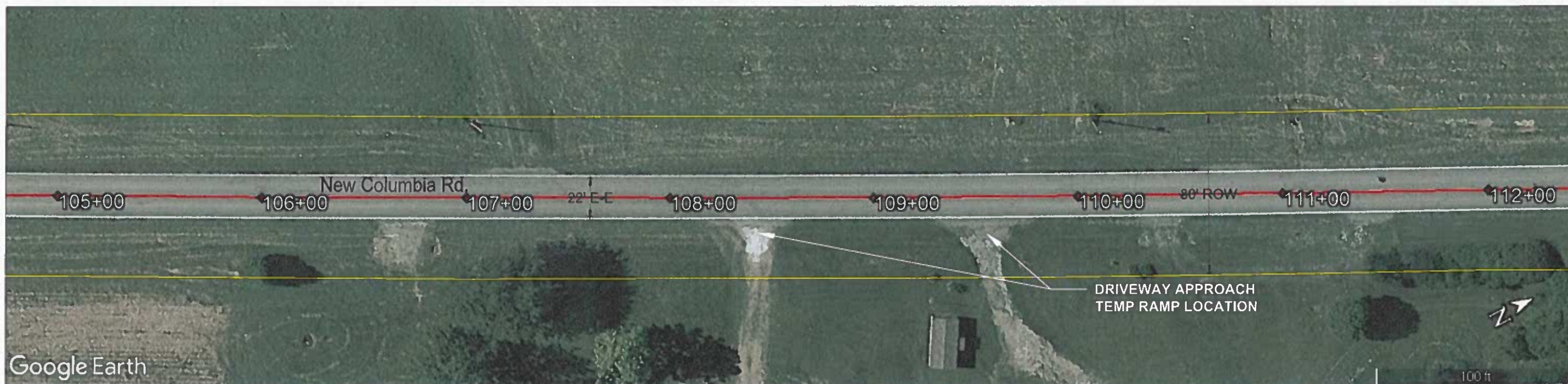
DESIGNED - A. FERRIS	REVISED -
DRAWN - A. FERRIS	REVISED -
CHECKED - A. FERRIS	REVISED -
DATE - 6/5/2024	REVISED -



**Massac County Highway Department**  
 2736 North Avenue, Metropolis, IL 62960  
 Amy N Ferris, P.E., County Engineer

**COUNTY HIGHWAY 1 (F.A.S. 929) - NEW COLUMBIA ROAD**  
 Plan Station 84+00 - 98+00  
 Scale: 1" = 50'-0"

F.A.U. RTE.	SECTION	COUNTY	TOTAL SHEETS	SHEET NO.
929	20-00103-00-RS	MASSAC	11	13
COUNTY UNIT ROAD DISTRICT		CONTRACT NO. 99739		
ILLINOIS		LOCAL AGENCY PROJECT		



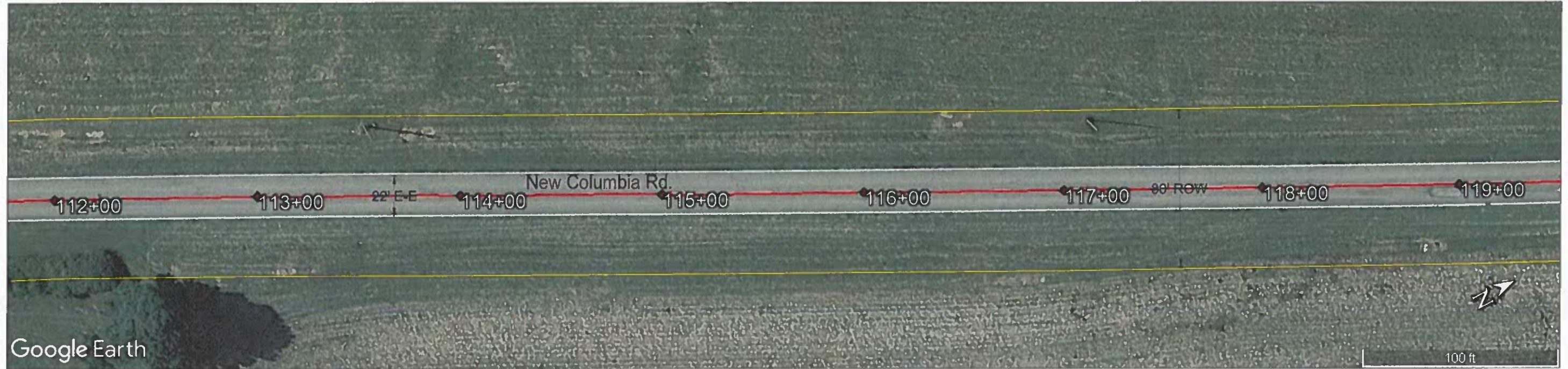
DESIGNED - A. FERRIS	REVISED -
DRAWN - A. FERRIS	REVISED -
CHECKED - A. FERRIS	REVISED -
DATE - 6/5/2024	REVISED -



**Massac County Highway Department**  
 2736 North Avenue, Metropolis, IL 62960  
 Amy N Ferris, P.E., County Engineer

**COUNTY HIGHWAY 1 (F.A.S. 929) - NEW COLUMBIA ROAD**  
 Plan Station 98+00 - 112+00  
 Scale: 1" = 50'-0"

F.A.U. RTE.	SECTION	COUNTY	TOTAL SHEETS	SHEET NO.
929	20-00103-00-RS	MASSAC	12	13
COUNTY UNIT ROAD DISTRICT		CONTRACT NO. 99739		
ILLINOIS		LOCAL AGENCY PROJECT		



DESIGNED - A. FERRIS	REVISED -
DRAWN - A. FERRIS	REVISED -
CHECKED - A. FERRIS	REVISED -
DATE - 6/5/2024	REVISED -



**Massac County Highway Department**  
 2736 North Avenue, Metropolis, IL 62960  
 Amy N Ferris, P.E., County Engineer

**COUNTY HIGHWAY 1 (F.A.S. 929) - NEW COLUMBIA ROAD**  
 Plan Station 112+00 - 122+60  
 Scale: 1" = 50'-0"

F.A.U. RTE.	SECTION	COUNTY	TOTAL SHEETS	SHEET NO.
929	20-00103-00-RS	MASSAC	13	13
COUNTY UNIT ROAD DISTRICT		CONTRACT NO. 99739		
ILLINOIS		LOCAL AGENCY PROJECT		