

STATE OF ILLINOIS
DEPARTMENT OF TRANSPORTATION



| F.A.P. RITE | SECTION | COUNTY | TOTAL SHEETS | SHEET NO. |
|-----------------------------|----------------|--------|--------------|-----------|
| 339 | FAP 0339 22 RS | COOK | 34 | 1 |
| ILLINOIS CONTRACT NO. 62T11 | | | | |

* 34 + 22 = 64 TOTAL SHEETS
** 64 + 2 = 66 TOTAL SHEETS

D-91-240-22

FOR INDEX OF SHEETS, SEE SHEET NO. 2

THIS IMPROVEMENT IS LOCATED IN THE CITY OF DES PLAINES
AND THE VILLAGES OF MORTON GROVE AND NILES.**TRAFFIC DATA**

IL 58 (GOLF ROAD)
2021 ADT: 34,700
POSTED SPEED LIMIT: 35 - 40 MPH

LOCATION #1:
FAP ROUTE 339 - IL 58 (GOLF RD)
FROM I-294 (TRI-STATE TOLLWAY) TO LINCOLN ST
SMART OVERLAY WITH ADA IMPROVEMENTS

LOCATION #2:
OR ROUTE 1320 - ELK BLVD
FROM US12/45 TO US 12
DESIGNED OVERLAY

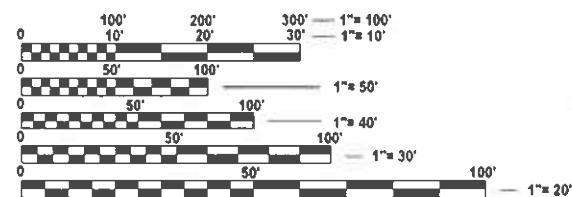
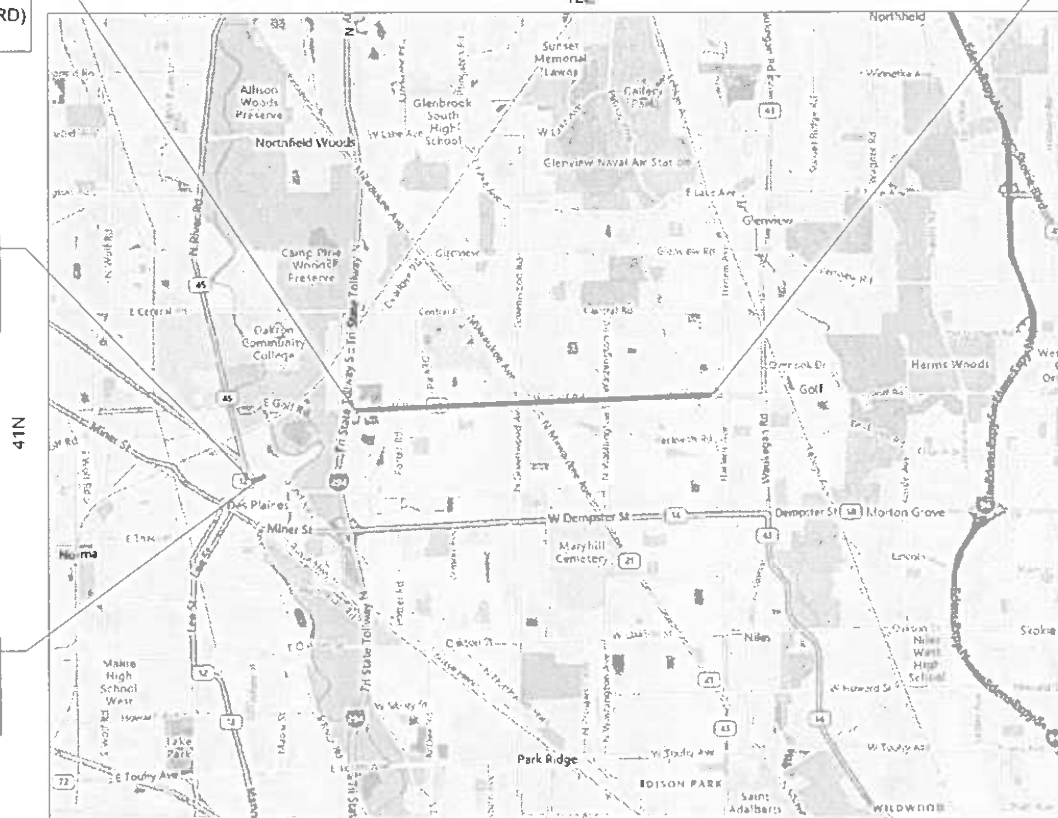
SECTION: FAP 0339 22 RS
PROJECT: NHPP-P6GK(045)
COOK COUNTY
C-91-293-22

LOCATION 1:
PROJECT BEGINS
FAP 339 - IL 58 (GOLF RD)
STA. 16+76

LOCATION 2:
PROJECT BEGINS
OR 1320 - ELK BLVD
STA. 15+00

LOCATION 2:
PROJECT ENDS
OR 1320 - ELK BLVD
STA. 20+57

LOCATION 1:
PROJECT ENDS
FAP 339 - IL 58 (GOLF RD)
STA. 177+50



FULL SIZE PLANS HAVE BEEN PREPARED USING STANDARD
ENGINEERING SCALES. REDUCED SIZED PLANS WILL NOT
CONFORM TO STANDARD SCALES. IN MAKING MEASUREMENTS
ON REDUCED PLANS, THE ABOVE SCALES MAY BE USED.

J.U.L.I.E.
JOINT UTILITY LOCATION INFORMATION FOR EXCAVATION
1-800-892-0123
OR 811

PROJECT ENGINEER: RODRIGO LEDEZMA (847) 705-4580
PROJECT MANAGER: J. ALAIN MIDY (847) 221-3056

CONTRACT NO. 62T11

GROSS LENGTH = 16,624 FT. = 3.148 MILE
NET LENGTH = 16,624 FT. = 3.148 MILE

STATE OF ILLINOIS
DEPARTMENT OF TRANSPORTATION

SUBMITTED June 20, 2024 Jose R. IR REGIONAL ENGINEER

August 16, 2024 Joe A. Elk ENGINEER OF DESIGN AND ENVIRONMENT

August 16, 2024 James J. Jan DIRECTOR OF HIGHWAYS PROJECT IMPLEMENTATION 13

**PRINTED BY THE AUTHORITY
OF THE STATE OF ILLINOIS**

1 REVISED SHEET 9/6/2024

REV-SEP

INDEX OF SHEETS

STATE STANDARDS

GENERAL NOTES

SHEET NO.

DESCRIPTION

STANDARD NO.

DESCRIPTION


- 1COVER SHEET
- 2 - 2aINDEX OF SHEETS, STATE STANDARDS, AND GENERAL NOTES
- 3 - 5SUMMARY OF QUANTITIES
- 6 - 7TYPICAL SECTIONS
- 8 - 13IL 58 ROADWAY PLAN
- 14ELK BLVD ROADWAY PLAN
- 14aCENTRAL RD DRAINAGE PLAN
- 15 - 22ADA IMPROVEMENT DETAILS
- 23a - 31bAPS AND DETECTOR LOOP SIGNAL PLANS
- 32FRAMES AND LIDS ADJUSTMENT WITH MILLING (BD-08)
- 33PAVEMENT PATCHING FOR HMA SURFACED PAVEMENT (BD-22)
- 34CURB OR CURB AND GUTTER REMOVAL AND REPLACEMENT (BD-24)
- 35BUTT JOINTS AND HMA TAPER (BD-32)
- 36ENTRANCE AND EXIT RAMP CLOSURE DETAILS (TC-08)
- 37TRAFFIC CONTROL AND PROTECTION FOR SIDEROADS, INTERSECTIONS, AND DRIVEWAYS (TC-10)
- 38RAISED REFLECTIVE PAVEMENT MARKERS (SNOW PLOW RESISTANT) (TC-11)
- 39DISTRICT ONE TYPICAL PAVEMENT MARKINGS (TC-13)
- 40TRAFFIC CONTROL AND PROTECTION AT TURN BAYS (TO REMAIN OPEN TO TRAFFIC) (TC-14)
- 41SHORT-TERM PAVEMENT MARKING LETTERS AND SYMBOLS (TC-16)
- 42ARTERIAL ROAD INFORMATION SIGN (TC-22)
- 43DRIVEWAY ENTRANCE SIGNING (TC-26)
- 44 - 50STANDARD TRAFFIC CONTROL SIGNAL DESIGN DETAILS (TS-05)
- 51DETECTOR LOOP INSTALLATION DETAIL FOR ROADWAY RESURFACING (TS-07)

- 000001-07STANDARD SYMBOLS, ABBREVIATIONS, AND PATTERNS
- 701101-05OFF-RD OPERATIONS, MULTILANE, 15' (4.5 m) TO 24" (600 mm) FROM PAVEMENT EDGE
- 701106-02OFF-RD OPERATIONS, MULTILANE, MORE THAN 15' (4.5 m) AWAY
- 701427-05LANE CLOSURE, MULTILANE, INTERMITTENT OR MOVING OPER., FOR SPEEDS < 40 MPH
- 701456-05PARTIAL EXIT RAMP CLOSURE, FREEWAY/EXPRESSWAY
- 701601-09URBAN LANE CLOSURE, MULTILANE, 1W OR 2W WITH NONTRAVERSABLE MEDIAN
- 701606-10URBAN SINGLE LANE CLOSURE, MULTILANE, 2W WITH MOUNTABLE MEDIAN
- 701611-01URBAN HALF ROAD CLOSURE, MULTILANE, 2W WITH MOUNTABLE MEDIAN
- 701701-10URBAN LANE CLOSURE, MULTILANE INTERSECTION
- 701801-06SIDEWALK, CORNER OR CROSSWALK CLOSURE
- 701901-09TRAFFIC CONTROL DEVICES

- 1THE CONTRACTOR WILL NOT BE ALLOWED TO SET UP A YARD OR FIELD OFFICE ON STATE PROPERTY WITHOUT WRITTEN PERMISSION FROM THE DEPARTMENT.
- 2ALL MILLED SURFACES SHALL BE A UNIFORM CROSS SLOPE PER LANE AND FREE OF RIDGES BETWEEN PASSES. ANY DEVIATIONS SHALL BE CORRECTED AT NO COST TO THE DEPARTMENT.
- 3BUTT JOINTS SHALL BE INSTALLED AT THE ENDS OF ALL RESURFACING (WHERE RESURFACING MEETS EXISTING PAVEMENT) ACCORDING TO THE "BUTT JOINT AND HOT-MIX ASPHALT TAPER DETAILS" SHEET INCLUDED IN THE PLANS, UNLESS OTHERWISE SPECIFIED.
- 4ALL PAVEMENT PATCHING LOCATIONS WILL BE DETERMINED IN THE FIELD BY THE ENGINEER.
- 5LOCATION OF COMBINATION CONCRETE CURB AND GUTTER REMOVAL AND REPLACEMENT [OR COMBINATION CURB AND GUTTER (THE TYPE SPECIFIED ON THE PLANS)], WILL BE DETERMINED IN THE FIELD BY THE ENGINEER.
- 6TEN (10) FOOT TRANSITIONS SHALL BE USED TO MATCH PROPOSED CURB AND GUTTER AND MEDIAN ITEMS OF WORK TO EXISTING CURBS AND GUTTER AND MEDIANS IN THE FIELD, UNLESS OTHERWISE SHOWN.
- 7DRAINAGE ADJUSTMENT OR RECONSTRUCTION LOCATIONS WILL BE DETERMINED IN THE FIELD BY THE ENGINEER.
- 8IT SHALL BE THE CONTRACTOR'S RESPONSIBILITY TO VERIFY ALL DIMENSIONS AND CONDITIONS EXISTING IN THE FIELD PRIOR TO CONSTRUCTION AND ORDERING OF MATERIALS.
- 9FRAMES AND GRATES ADJUSTMENT OF PRIVATE UTILITIES WITHIN THE LIMITS OF THE IMPROVEMENTS SHALL BE DONE BY THEIR RESPECTIVE OWNERS AND ARE NOT PART OF THIS CONTRACT.
- 10THE CONTRACTOR SHALL BE REQUIRED TO KEEP A RECORD OF THE LOCATIONS OF PLATED STRUCTURES BY STATION AND OFFSET LEFT OR RIGHT OF THE CENTERLINE OF PAVEMENT.
- 11THE CONTRACTOR SHALL BE REQUIRED TO KEEP A RECORD OF THE LOCATIONS OF THE BURIED STRUCTURES ACCORDING TO THE STATION AND DISTANCE LEFT OR RIGHT OF THE CENTERLINE OF PAVEMENT. UPON COMPLETION OF THE WORK, THE CONTRACTOR SHALL DELIVER THE RECORD TO THE ENGINEER.
- 12EXISTING BROKEN FRAMES AND LIDS SHALL BE REMOVED AND DISPOSED OF BY THE CONTRACTOR AND SHALL BE REPLACED AS DIRECTED BY THE ENGINEER. REPLACEMENT FRAMES AND LIDS WILL BE PAID FOR ACCORDING TO ARTICLE 109.04 OF THE STANDARD SPECIFICATIONS UNLESS A SEPARATE PAY ITEM HAS BEEN PROVIDED.
- 13THE CONTRACTOR SHALL CONTACT THE DISTRICT ONE TRAFFIC CONTROL SUPERVISOR AT KALPANA.KANNAN-HOSADURGA@ILLINOIS.GOV A MINIMUM OF 72 HOURS IN ADVANCE OF BEGINNING WORK.
- 14THE ENGINEER SHALL CONTACT FADI SULTAN, AREA TRAFFIC FIELD ENGINEER, AT (847) 772-4058 A MINIMUM OF TWO (2) WEEKS PRIOR TO THE PLACEMENT OF PERMANENT PAVEMENT MARKINGS.
- 15PAVEMENT MARKING TAPE, TYPE IV SHALL BE USED FOR SHORT TERM PAVEMENT MARKINGS ON ALL FINAL SURFACES.
- 16OVERNIGHT LANE CLOSURES SHALL NOT BE ALLOWED FOR REHABILITATION PROJECTS INVOLVING DAYTIME MILLING AND RESURFACING OPERATIONS AND CLASS D PATCHING UNLESS OTHER CONDITIONS WARRANT EXTENDED LANE CLOSURES AS DETERMINED AND APPROVED IN WRITING BY THE ENGINEER OR AS PROVIDED FOR IN THE CONTRACT SPECIFICATIONS.




MODEL: GenNotesSh01 [Sheet]
FILE NAME: c:\pw_work\pwk\roth\pjd\0931886\124022-shh-gennote.dgn

| | | | | | | | | | |
|--|------------|---------------|----------|---|----------|---------|---|---|-----------|
| | USER NAME | = Jacob.Roth | DESIGNED | - | BBB | REVISED | - |  JPR | 8/27/2024 |
| | | | DRAWN | - | CCC | REVISED | - | RV2 | |
| | PLOT SCALE | = \$\$SCALE\$ | CHECKED | - | AAA | REVISED | - | RV3 | |
| | PLOT DATE | = 8/27/2024 | DATE | - | XX/XX/XX | REVISED | - | RV4 | |

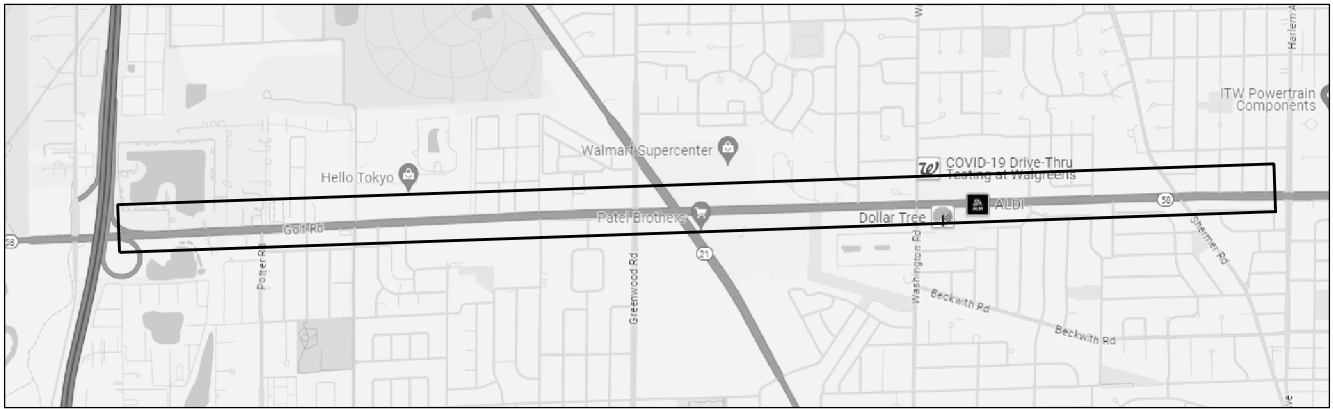
STATE OF ILLINOIS
DEPARTMENT OF TRANSPORTATION

INDEX OF SHEETS, STATE STANDARDS, AND GENERAL NOTES
IL ROUTE 58 (GOLF RD) - I-294 (TRI-STATE TOLLWAY) TO LINCOLN ST

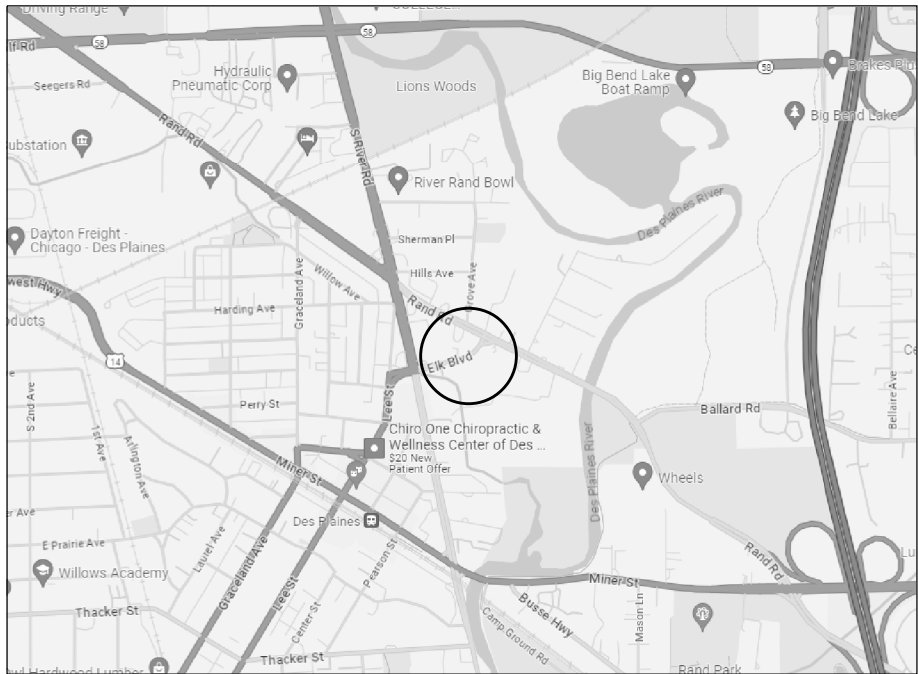
SCALE: SHEET 1 OF 1 SHEETS STA. TO STA.

 REVISED SHEET 8/28/2024

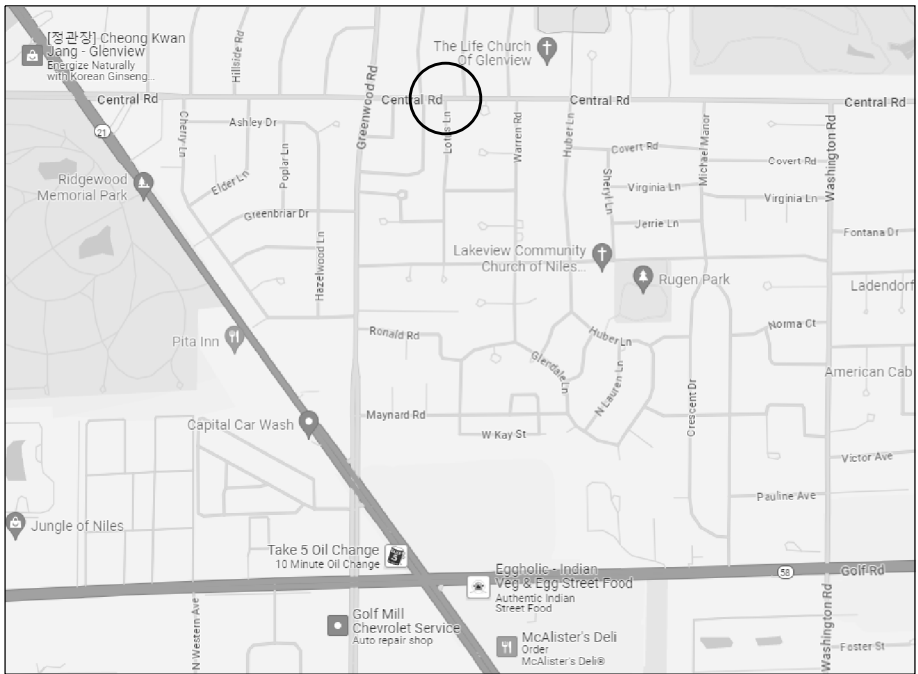
| | | | | |
|------------|----------------|--------------------|------------------|-----------|
| F.A.P RTE. | SECTION | COUNTY | TOTAL SHEETS | SHEET NO. |
| 339 | FAP 0399 22 RS | COOK | 51 | 2 |
| | | CONTRACT NO. 62T11 | | |
| | | ILLINOIS | FED. AID PROJECT | |



LOCATION #1
ILLINOIS ROUTE 58 (GOLF ROAD)
FROM I-294 (TRI-STATE TOLLWAY) TO LINCOLN STREET



LOCATION #2
ELK BOULEVARD
FROM US 12/US 45 TO US 12



LOCATION #3
CENTRAL ROAD
AT LOTUS LANE

MODEL: GenNotesSh02 (Sheet)
FILE NAME: c:\paw_work\paw\lotus\roth\p0931886\124022-shh-gennote.dgn

| | | | | | |
|------------|---------------|----------|------------|---------|-------------------|
| USER NAME | = Jacob.Roth | DESIGNED | - BBB | REVISED | - 1 JPR 8/27/2024 |
| DRAWN | - CCC | REVIS | - RV2 | | |
| PLOT SCALE | = \$\$CALES\$ | CHECKED | - AAA | REVISED | - RV3 |
| PLOT DATE | = 8/27/2024 | DATE | - XX/XX/XX | REVISED | - RV4 |

STATE OF ILLINOIS
DEPARTMENT OF TRANSPORTATION

INDEX OF SHEETS, STATE STANDARDS, AND GENERAL NOTES
IL ROUTE 58 (GOLF RD) - I-294 (TRI-STATE TOLLWAY) TO LINCOLN ST


SCALE: SHEET 1 OF SHEETS STA. TO STA.

| | | | | | |
|--------------------------------|----------------|--------|--------------|-----------|--|
| 1 ADDED ENTIRE SHEET 8/28/2024 | | | | | |
| F.A.P. RTE. | SECTION | COUNTY | TOTAL SHEETS | SHEET NO. | |
| 339 | FAP 0399 22 RS | COOK | 51 | 2a | |
| CONTRACT NO. 62T11 | | | | | |
| ILLINOIS FED. AID PROJECT | | | | | |

MODEL: SQQ-01 (Sheet)
FILE NAME: c:\pwwork\dwg\lotr\bjp\093186\012\022-shr-SQQ.dgn

| SUMMARY OF QUANTITIES | | | | IL 58 80% FED 20% STATE 0004 | IL 58 80% FED 20% STATE 0021 | IL 58 100% STATE 0044 | ELK BLVD 100% STATE 0004 | LOTUS LANE 100% STATE 0044 | |
|-----------------------|---|-------|-------------------|---|---|--------------------------------|-----------------------------------|-------------------------------------|--|
| Code No. | Item | Unit | Total Quantity | | | | | | |
| 20101400 | NITROGEN FERTILIZER NUTRIENT | POUND | 4 | 4 | | | | | |
| | | | | | | | | | |
| 20101500 | PHOSPHORUS FERTILIZER NUTRIENT | POUND | 4 | 4 | | | | | |
| | | | | | | | | | |
| 20101600 | POTASSIUM FERTILIZER NUTRIENT | POUND | 4 | 4 | | | | | |
| | | | | | | | | | |
| 20200100 | EARTH EXCAVATION | CU YD | 180 | 28.5 | | | | 151.5 | |
| 20800150 | TRENCH BACKFILL | CU YD | 3 | | | | | 3 | |
| 21101615 | TOPSOIL FURNISH AND PLACE, 4" | SQ YD | 210 | 172 | | | 38 | | |
| | | | | | | | | | |
| 25200110 | SODDING, SALT TOLERANT | SQ YD | 210 | 172 | | | 38 | | |
| | | | | | | | | | |
| 25200200 | SUPPLEMENTAL WATERING | UNIT | 2 | 2 | | | | | |
| | | | | | | | | | |
| 35501316 | HOT-MIX ASPHALT BASE COURSE, 8" | SQ YD | 17 | 17 | | | | | |
| | | | | | | | | | |
| 40600290 | BITUMINOUS MATERIALS (TACK COAT) | POUND | 59618 | 57485 | | | 2133 | | |
| | | | | | | | | | |
| 40600370 | LONGITUDINAL JOINT SEALANT | FOOT | 56410 | 54760 | | | 1650 | | |
| | | | | | | | | | |
| 40600400 | MIXTURE FOR CRACKS, JOINTS, AND FLANGEWAYS | TON | 240 | 192 | | | 48 | | |
| | | | | | | | | | |
| 40600982 | HOT-MIX ASPHALT SURFACE REMOVAL - BUTT JOINT | SQ YD | 705 | 604 | | | 101 | | |
| | | | | | | | | | |
| 40601005 | HOT-MIX ASPHALT REPLACEMENT OVER PATCHES | TON | 75 | 75 | | | | | |
| | | | | | | | | | |
| 40602978 | HOT-MIX ASPHALT BINDER COURSE, IL- 9.5, N50 | TON | 310 | | | | 310 | | |
| | | | | | | | | | |
| 40604060 | HOT-MIX ASPHALT SURFACE COURSE, IL-9.5, MIX "D", N50 | TON | 313 | 3 | | | 310 | | |
| | | | | | | | | | |
| 40605026 | POLYMERIZED HOT-MIX ASPHALT SURFACE COURSE, STONE MATRIX ASPHALT, 9.5, MIX "F", N80 | TON | 12519 | 12519 | | | | | |
| | | | | | | | | | |
| 42001300 | PROTECTIVE COAT | SQ YD | 1054 | 1000 | | | 54 | | |
| | | | | | | | | | |
| 42300400 | PORTLAND CEMENT CONCRETE DRIVEWAY PAVEMENT, 8 INCH | SQ YD | 35.4 | 27 | | | 8.4 | | |
| | | | | | | | | | |
| 42400200 | PORTLAND CEMENT CONCRETE SIDEWALK 5 INCH | SQ FT | 5238 | 5238 | | | | | |
| | | | | | | | | | |
| 42400800 | DETECTABLE WARNINGS | SQ FT | 228 | 228 | | | | | |
| | | | | | | | | | |
| 44000156 | HOT-MIX ASPHALT SURFACE REMOVAL, 1 3/4" | SQ YD | 127744 | 127744 | | | | | |
| | | | | | | | | | |
| 44000163 | HOT-MIX ASPHALT SURFACE REMOVAL, 3 1/2" | SQ YD | 3160 | | | | 3160 | | |
| | | | | | | | | | |

| SUMMARY OF QUANTITIES | | | | IL 58 80% FED 20% STATE 0004 | IL 58 80% FED 20% STATE 0021 | IL 58 100% STATE 0044 | ELK BLVD 100% STATE 0004 | LOTUS LANE 100% STATE 0044 | |
|-----------------------|---|-------|-------------------|---|---|--------------------------------|-----------------------------------|-------------------------------------|--|
| Code No. | Item | Unit | Total Quantity | | | | | | |
| 44000200 | DRIVEWAY PAVEMENT REMOVAL | SQ YD | 60.4 | 52 | | | 8.4 | | |
| | | | | | | | | | |
| 44000600 | SIDEWALK REMOVAL | SQ FT | 5238 | 5238 | | | | | |
| | | | | | | | | | |
| 44002207 | HOT-MIX ASPHALT REMOVAL OVER PATCHES, 1 3/4" | SQ YD | 759 | 759 | | | | | |
| | | | | | | | | | |
| 44201761 | CLASS D PATCHES, TYPE I, 10 INCH | SQ YD | 4 | | | | | 4 | |
| | | | | | | | | | |
| 44201765 | CLASS D PATCHES, TYPE II, 10 INCH | SQ YD | 82 | | | | | 82 | |
| | | | | | | | | | |
| 44201769 | CLASS D PATCHES, TYPE III, 10 INCH | SQ YD | 48 | | | | | 48 | |
| | | | | | | | | | |
| 44201771 | CLASS D PATCHES, TYPE IV, 10 INCH | SQ YD | 38 | | | | | 38 | |
| | | | | | | | | | |
| 44201773 | CLASS D PATCHES, TYPE I, 11 INCH | SQ YD | 8 | 8 | | | | | |
| | | | | | | | | | |
| 44201777 | CLASS D PATCHES, TYPE II, 11 INCH | SQ YD | 359 | 351 | | | | 8 | |
| | | | | | | | | | |
| 44201781 | CLASS D PATCHES, TYPE III, 11 INCH | SQ YD | 200 | 200 | | | | | |
| 54213660 | PRECAST REINFORCED CONCRETE FLARED END SECTIONS 15" | EACH | 1 | | | | | 1 | |
| 44201783 | CLASS D PATCHES, TYPE IV, 11 INCH | SQ YD | 200 | 200 | | | | | |
| 60200805 | CATCH BASINS, TYPE A, 4' - DIAMETER, TYPE 8 GRATE | EACH | 1 | | | | | 1 | |
| 60252800 | CATCH BASINS TO BE RECONSTRUCTED | EACH | 2 | 1 | | | 1 | | |
| | | | | | | | | | |
| 60262700 | INLETS TO BE RECONSTRUCTED | EACH | 1 | 1 | | | | | |
| | | | | | | | | | |
| 60266600 | VALVE BOXES TO BE ADJUSTED | EACH | 3 | 3 | | | | | |
| | | | | | | | | | |
| 60300105 | FRAMES AND GRATES TO BE ADJUSTED | EACH | 41 | 41 | | | | | |
| | | | | | | | | | |
| 60300305 | FRAMES AND LIDS TO BE ADJUSTED | EACH | 9 | 8 | | | | 1 | |
| | | | | | | | | | |
| 60404950 | FRAMES AND GRATES, TYPE 24 | EACH | 5 | 5 | | | | | |
| | | | | | | | | | |
| 60406000 | FRAMES AND LIDS, TYPE 1, OPEN LID | EACH | 3 | 2 | | | | 1 | |
| | | | | | | | | | |
| 60406100 | FRAMES AND LIDS, TYPE 1, CLOSED LID | EACH | 26 | 26 | | | | | |
| | | | | | | | | | |
| * 66900200 | NON-SPECIAL WASTE DISPOSAL | CU YD | 180 | 28.5 | | | | 151.5 | |
| | | | | | | | | | |
| * 66900530 | SOIL DISPOSAL ANALYSIS | EACH | 4 | 4 | | | | | |
| | | | | | | | | | |
| * 66901001 | REGULATED SUBSTANCES PRE-CONSTRUCTION PLAN | L SUM | 1 | 1 | | | | | |
| | | | | | | | | | |

 REVISED SHEET 8/28/2024 * SPECIALTY ITEM

| | | | | | | | |
|---|---|--|---------------------|----------------|-----------------------------|-----------------|--------------|
| STATE OF ILLINOIS DEPARTMENT OF TRANSPORTATION | SUMMARY OF QUANTITIES | | F.A.P RTE. | SECTION | COUNTY | TOTAL SHEETS | SHEET NO. |
| | IL ROUTE 58 (GOLF RD) - I-294 (TRI-STATE TOLLWAY) TO LINCOLN ST | | 339 | FAP 0399 22 RS | COOK | 51 | 3 |
| | SCALE: | | SHEET 1 OF 3 SHEETS | | CONTRACT NO. 62T11 | | |
| | | | STA. TO STA. | | ILLINOIS FED. AID PROJECT | | |

SUMMARY OF QUANTITIES

[illegible]

| | | | |
|--------------|------------------------|-----------------|---------------|
| FILE NAME: 0 | USER NAME = Jacob.Roth | DESIGNED - BBB | REVISED - RV1 |
| | | DRAWN - CCC | REVISED - RV2 |
| | | CHECKED - AAA | REVISED - RV3 |
| | PLOT DATE = 6/28/2024 | DATE - XX/XX/XX | REVISED - RV4 |

STATE OF ILLINOIS
DEPARTMENT OF TRANSPORTATION

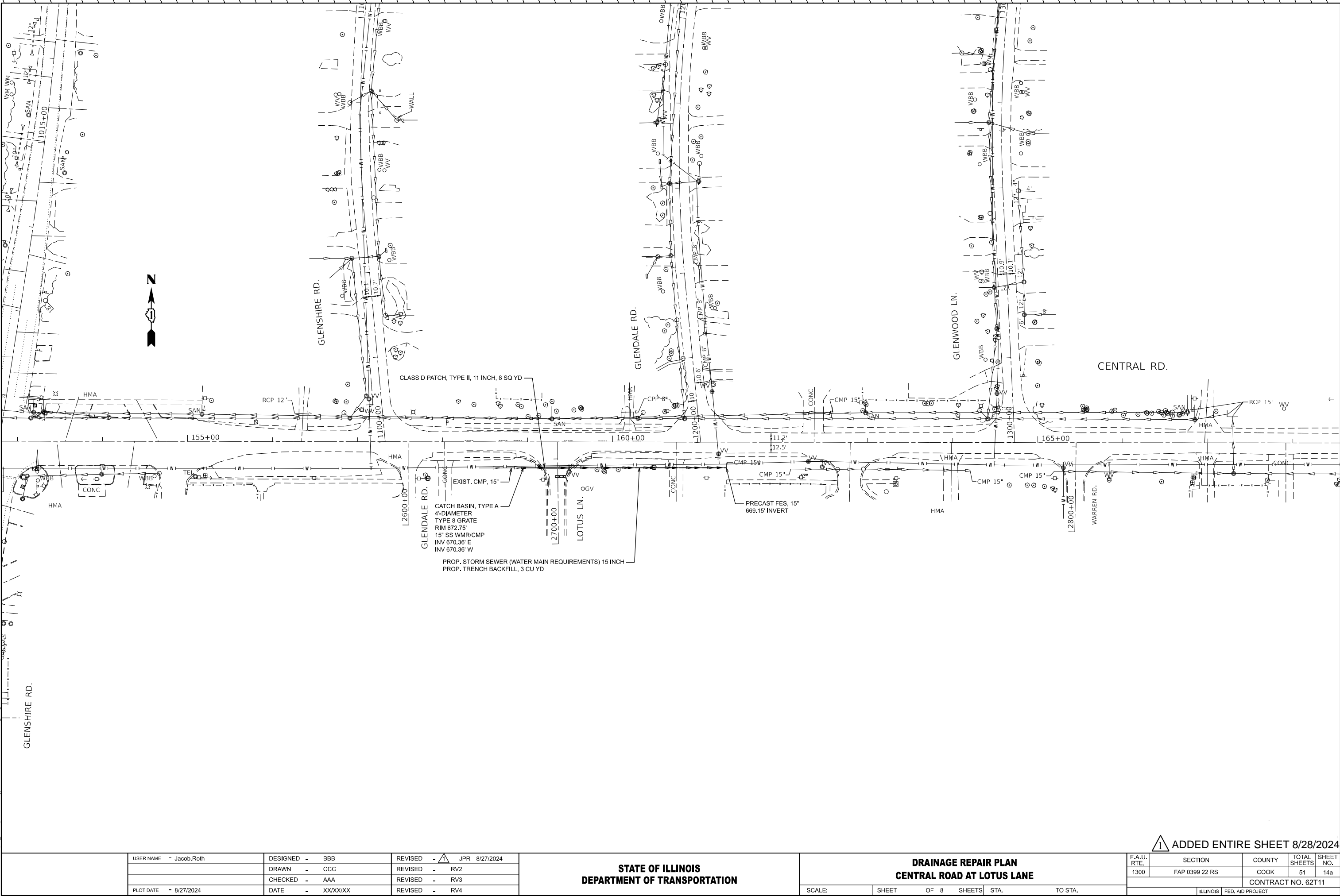
SUMMARY OF QUANTITIES

[illegible]

| | | | | | | | | | |
|--|-------|------|--------|------|--------------------|----------------|--------|-----------------|--------------|
| SUMMARY OF QUANTITIES IL ROUTE 58 (GOLF RD) - I-294 (TRI-STATE TOLLWAY) TO LINCOLN ST | | | | | F.A.P. RTE. | SECTION | COUNTY | TOTAL SHEETS | SHEET NO. |
| | | | | | 339 | FAP 0399 22 RS | COOK | 51 | 5 |
| | | | | | CONTRACT NO. 62T11 | | | | |
| SCALE: | SHEET | OF 3 | SHEETS | STA. | TO STA. | | | | |

1

MODEL: Sewer Repair Sheet
FILE NAME: c:\pwwork\add\roth\p\0931888\124022-Design.dgn



1 ADDED ENTIRE SHEET 8/28/2024

| | | | |
|--|------------------------|-----------------|---------------------------|
| | USER NAME = Jacob.Roth | DESIGNED - BBB | REVISED - 1 JPR 8/27/2024 |
| | | DRAWN - CCC | REVISED - RV2 |
| | | CHECKED - AAA | REVISED - RV3 |
| | PLOT DATE = 8/27/2024 | DATE - XX/XX/XX | REVISED - RV4 |

STATE OF ILLINOIS
DEPARTMENT OF TRANSPORTATION

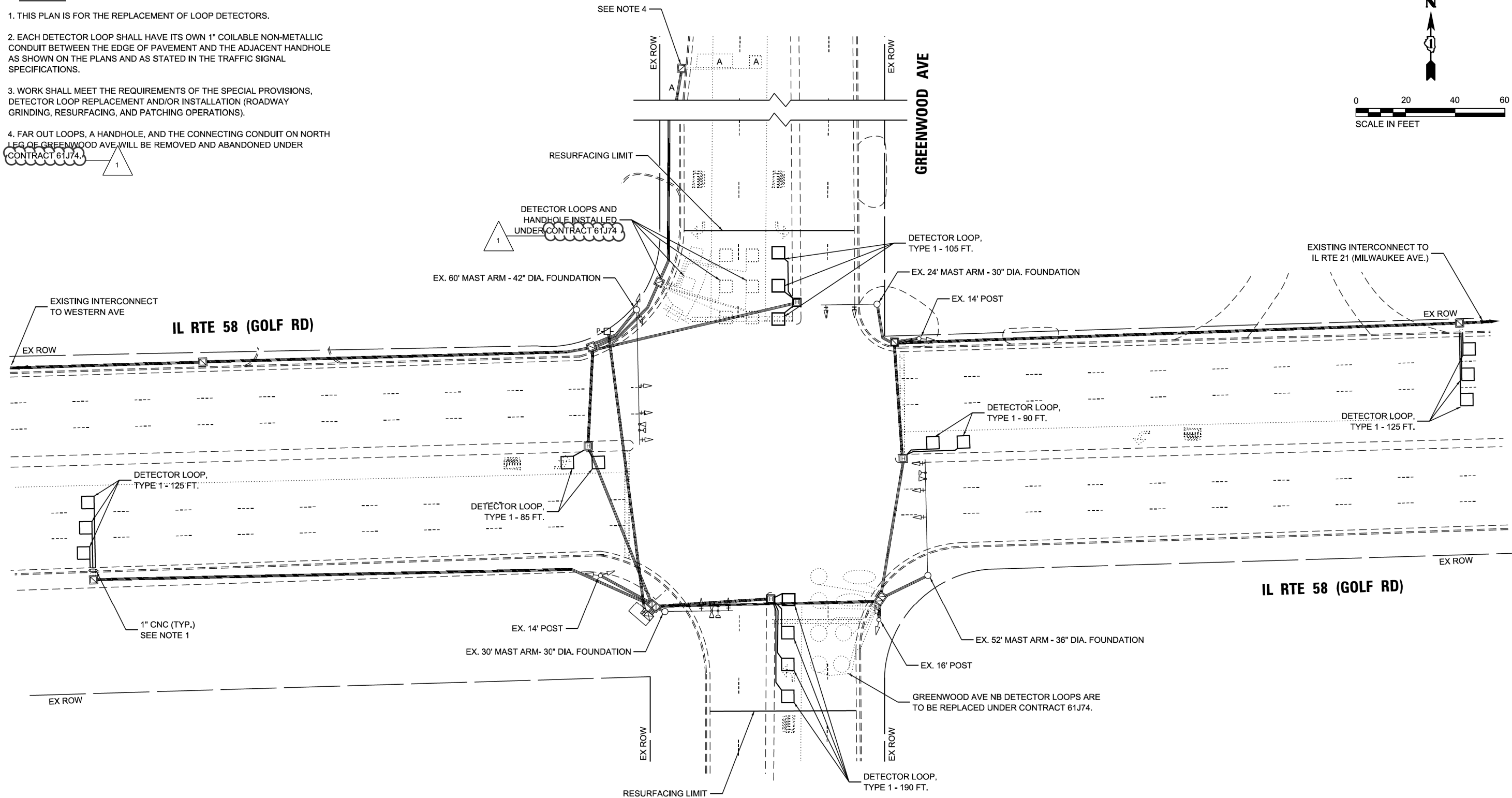
DRAINAGE REPAIR PLAN
CENTRAL ROAD AT LOTUS LANE

SCALE: SHEET OF 8 SHEETS STA. TO STA.

| F.A.U. RTE. | SECTION | COUNTY | TOTAL SHEETS | SHEET NO. |
|---------------------------|----------------|--------|--------------|-----------|
| 1300 | FAP 0399 22 RS | COOK | 51 | 14a |
| CONTRACT NO. 62T11 | | | | |
| ILLINOIS FED. AID PROJECT | | | | |

NOTES:

1. THIS PLAN IS FOR THE REPLACEMENT OF LOOP DETECTORS.
2. EACH DETECTOR LOOP SHALL HAVE ITS OWN 1" COILABLE NON-METALLIC CONDUIT BETWEEN THE EDGE OF PAVEMENT AND THE ADJACENT HANDHOLE AS SHOWN ON THE PLANS AND AS STATED IN THE TRAFFIC SIGNAL SPECIFICATIONS.
3. WORK SHALL MEET THE REQUIREMENTS OF THE SPECIAL PROVISIONS, DETECTOR LOOP REPLACEMENT AND/OR INSTALLATION (ROADWAY GRINDING, RESURFACING, AND PATCHING OPERATIONS).
4. FAR OUT LOOPS, A HANDHOLE, AND THE CONNECTING CONDUIT ON NORTH LEG OF GREENWOOD AVE WILL BE REMOVED AND ABANDONED UNDER CONTRACT 61J74.



MODEL: APS-09 [Sheet]
FILE NAME: c:\p\work\p\work\trb\p\0931886D124022-shr-TS.dgn

| | | | |
|-----------|--------------|---------------|-------------------|
| PLOT DATE | USER NAME | DESIGNED | REVISED |
| | = Jacob.Roth | - BBB | - 1 JPR 8/27/2024 |
| | | DRAWN - CCC | REVISED - RV2 |
| | | CHECKED - AAA | REVISED - RV3 |
| | DATE | - XX/XX/XX | REVISED - RV4 |

STATE OF ILLINOIS
DEPARTMENT OF TRANSPORTATION

| APS SIGNAL PLANS | | | |
|---|---------|--------------|--------------|
| IL ROUTE 58 (GOLF RD) - I-294 (TRI-STATE TOLLWAY) TO LINCOLN ST | | | |
| SCALE: | SHEET 1 | OF 22 SHEETS | STA. TO STA. |

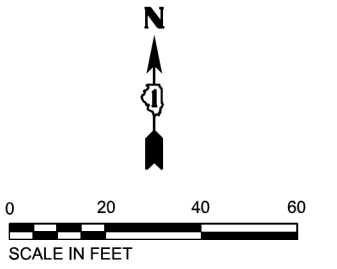
| F.A.P. RTE. | SECTION | COUNTY | TOTAL SHEETS | SHEET NO. |
|---------------------------|----------------|--------|--------------|-----------|
| 339 | FAP 0399 22 RS | COOK | 51 | 27a |
| CONTRACT NO. 62T11 | | | | |
| ILLINOIS FED. AID PROJECT | | | | |

REVIS
REVISED SHEET 8/28/2024

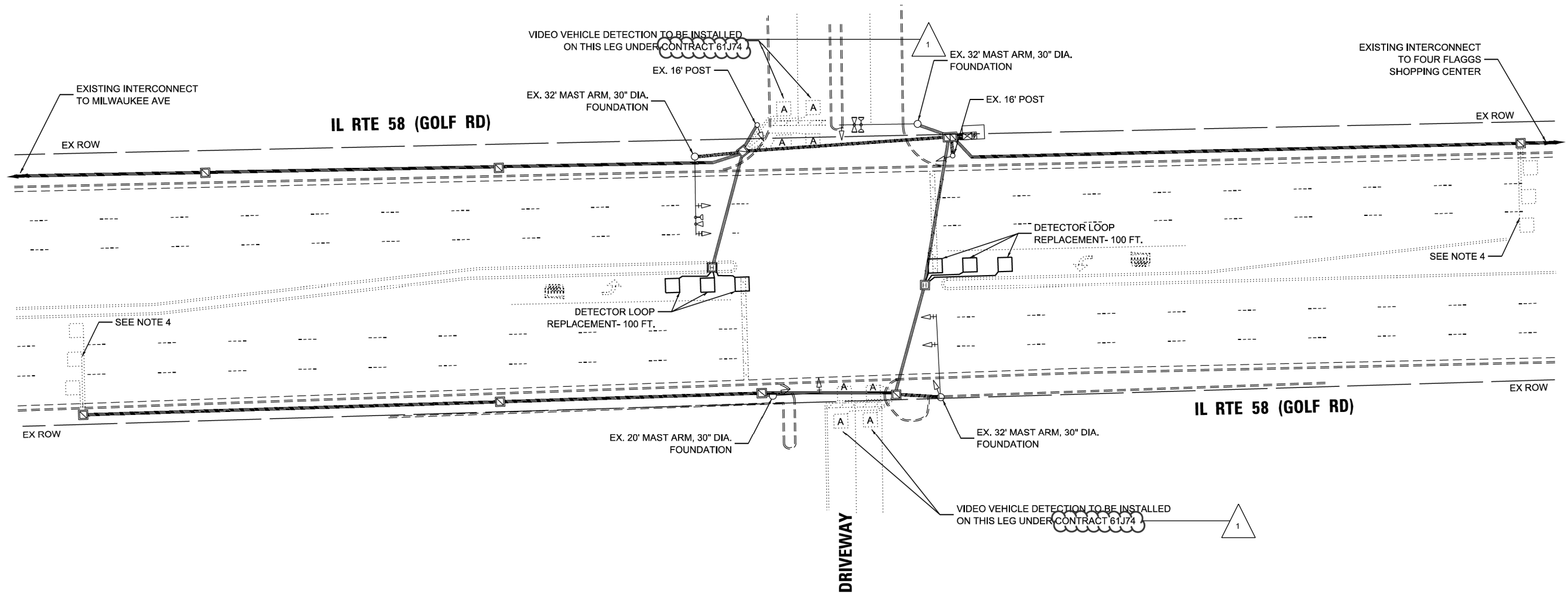
TS 2775
ECON 12

NOTES:

1. THIS PLAN IS FOR THE REPLACEMENT OF LOOP DETECTORS.
2. EACH DETECTOR LOOP SHALL HAVE ITS OWN 1" COILABLE NON-METALLIC CONDUIT BETWEEN THE EDGE OF PAVEMENT AND THE ADJACENT HANDHOLE AS SHOWN ON THE PLANS AND AS STATED IN THE TRAFFIC SIGNAL SPECIFICATIONS.
3. WORK SHALL MEET THE REQUIREMENTS OF THE SPECIAL PROVISIONS, DETECTOR LOOP REPLACEMENT AND/OR INSTALLATION (ROADWAY GRINDING, RESURFACING, AND PATCHING OPERATIONS).
4. EASTBOUND AND WESTBOUND FAR OUT LOOPS ARE TO BE REPLACED UNDER CONTRACT 61J74, AND THE CONTRACTOR SHALL COORDINATE WITH CONTRACT 61J74 REGARDING THESE LOOPS.



GOLF MILL PLAZA



MODEL: APS-13 [Sheet]
FILE NAME: c:\p\work\jacob.roth\p\0931886\124022-shr-TS.dgn

| | | | | | |
|-----------|--------------|----------|------------|---------|-------------------|
| USER NAME | = Jacob.Roth | DESIGNED | - BBB | REVISED | - 1 JPR 8/27/2024 |
| | | DRAWN | - CCC | REVISED | - RV2 |
| | | CHECKED | - AAA | REVISED | - RV3 |
| PLOT DATE | = 8/27/2024 | DATE | - XX/XX/XX | REVISED | - RV4 |

STATE OF ILLINOIS
DEPARTMENT OF TRANSPORTATION

APS SIGNAL PLANS
IL ROUTE 58 (GOLF RD) - I-294 (TRI-STATE TOLLWAY) TO LINCOLN ST

SCALE: SHEET 1 OF 22 SHEETS STA. TO STA.

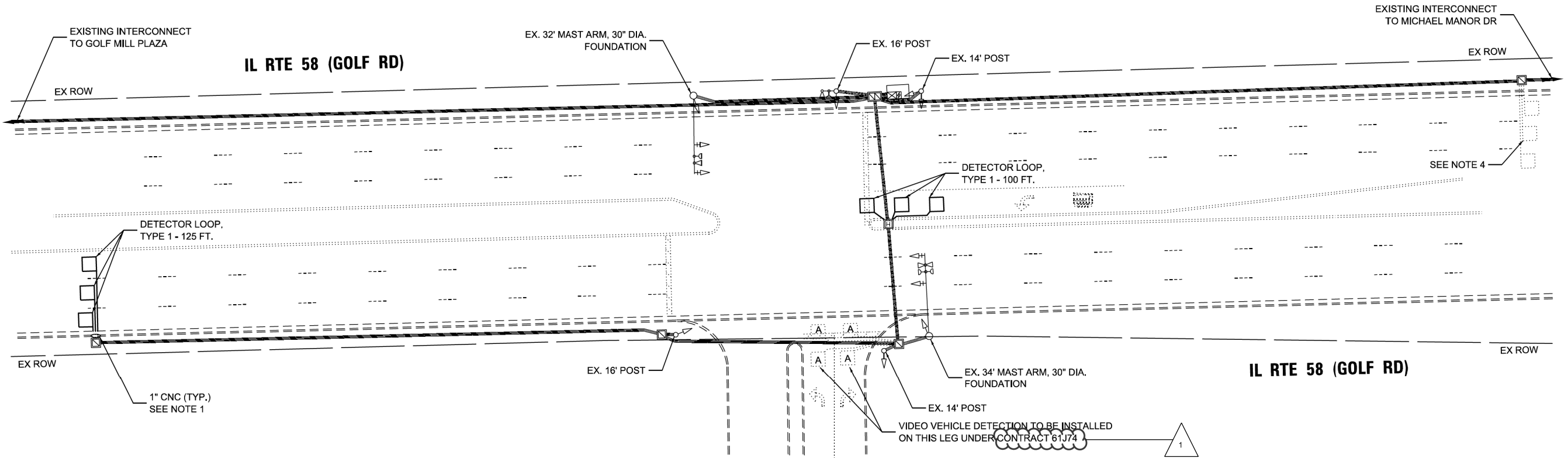
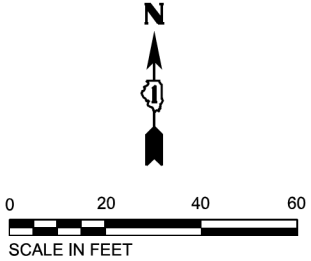
1 REVISED SHEET 8/28/2024

TS 11210
ECON 12

| F.A.P. RTE. | SECTION | COUNTY | TOTAL SHEETS | SHEET NO. |
|---------------------------|----------------|--------|--------------|-----------|
| 339 | FAP 0399 22 RS | COOK | 51 | 28c |
| CONTRACT NO. 62T11 | | | | |
| ILLINOIS FED. AID PROJECT | | | | |

NOTES:

1. THIS PLAN IS FOR THE REPLACEMENT OF LOOP DETECTORS.
2. EACH DETECTOR LOOP SHALL HAVE ITS OWN 1" COILABLE NON-METALLIC CONDUIT BETWEEN THE EDGE OF PAVEMENT AND THE ADJACENT HANDHOLE AS SHOWN ON THE PLANS AND AS STATED IN THE TRAFFIC SIGNAL SPECIFICATIONS.
3. WORK SHALL MEET THE REQUIREMENTS OF THE SPECIAL PROVISIONS, DETECTOR LOOP REPLACEMENT AND/OR INSTALLATION (ROADWAY GRINDING, RESURFACING, AND PATCHING OPERATIONS).
4. WESTBOUND FAR OUT LOOPS ARE TO BE REPLACED UNDER CONTRACT 61J74, AND THE CONTRACTOR SHALL COORDINATE WITH CONTRACT 61J74 REGARDING THESE LOOPS.



FOUR FLAGGS SHOPPING CENTER

MODEL: APS-15 [Sheet]
FILE NAME: c:\p\work\proj\roth\p\0931886\124022-shr-TS.dgn

| | | | | | |
|-----------|--------------|----------|------------|---------|-------------------|
| USER NAME | = Jacob.Roth | DESIGNED | - BBB | REVISED | - 1 JPR 8/27/2024 |
| | | DRAWN | - CCC | REVISED | - RV2 |
| | | CHECKED | - AAA | REVISED | - RV3 |
| PLOT DATE | = 8/27/2024 | DATE | - XX/XX/XX | REVISED | - RV4 |

STATE OF ILLINOIS
DEPARTMENT OF TRANSPORTATION

DETECTOR LOOP REPLACEMENT PLAN
IL RTE 58 (GOLF RD) AT FOUR FLAGGS SHOPPING CENTER

SCALE: SHEET 1 OF 22 SHEETS STA. TO STA.

REVIS
REVISED SHEET 8/28/2024

TS 2885
ECON 12

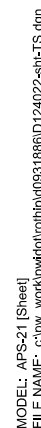
| F.A.P. RTE. | SECTION | COUNTY | TOTAL SHEETS | SHEET NO. |
|---------------------------|----------------|--------|--------------|-----------|
| 339 | FAP 0399 22 RS | COOK | 51 | 28e |
| CONTRACT NO. 62T11 | | | | |
| ILLINOIS FED. AID PROJECT | | | | |

THE FOLLOWING ITEMS SHALL BE REMOVED BY THE CONTRACTOR AND SHALL BE DISPOSED OF BY THEM OUTSIDE THE RIGHT-OF-WAY AT THEIR EXPENSE. THE SALVAGE VALUE OF THE REMOVED EQUIPMENT SHALL BE REFLECTED IN THE CONTRACT BID PRICE.

- THE FOLLOWING EXISTING TRAFFIC SIGNAL EQUIPMENT SHALL BE REMOVED BY THE CONTRACTOR AND SHALL BE RELOCATED TO THE PROPOSED TRAFFIC SIGNAL EQUIPMENT INDICATED IN THE PLAN.

1. THIS PLAN IS FOR THE INSTALLATION OF APS PUSH BUTTONS AND THE REPLACEMENT OF LOOP DETECTORS.
2. EACH DETECTOR LOOP SHALL HAVE ITS OWN 1" COILABLE NON-METALLIC CONDUIT BETWEEN THE EDGE OF PAVEMENT AND THE ADJACENT HANDHOLE AS SHOWN ON THE PLANS AND AS STATED IN THE TRAFFIC SIGNAL SPECIFICATIONS.
3. WORK SHALL MEET THE REQUIREMENTS OF THE SPECIAL PROVISIONS, DETECTOR LOOP REPLACEMENT AND/OR INSTALLATION (ROADWAY GRINDING, RESURFACING, AND PATCHING OPERATIONS).
4. ALL PUSH BUTTONS SHALL BE APS.
5. APS SHALL BE PLACED PARALLEL TO THE CORRESPONDING CROSSWALKS.

-



1 REVISED SHEET 8/28/2024 **ECON 8**

| | | | | |
|---------------|----------------|---------------------------|-----------------|--------------|
| F.A.P RTE. | SECTION | COUNTY | TOTAL SHEETS | SHEET NO. |
| 339 | FAP 0399 22 RS | COOK | 51 | 31a |
| | | CONTRACT NO. 62T11 | | |
| | | ILLINOIS FED. AID PROJECT | | |